



SL301 Series - 2K Wi-Fi Smart Lightbulb Pan-Tilt Camera - Installation Guide

The [SL301 Series - 2K Wi-Fi Smart Lightbulb Pan-Tilt Camera](#) can be installed with any standard E26 light socket.

For additional support, check out the [Lorex Connect App Guide](#), the [Troubleshooting Guide](#) or the [Frequently Asked Questions \(FAQs\)](#).

What's Included

- 2K Wi-Fi Smart Lightbulb Pan-Tilt Camera

Safety Information

CAUTION: RISK OF ELECTRIC SHOCK – USE IN DRY LOCATION

NOT FOR USE IN TOTALLY ENCLOSED LUMINAIRES

DO NOT USE WITH DIMMERS

ATTENTION: RISQUE DE DÉCHARGE ÉLECTRIQUE – UTILISER DANS UN ENDROIT SEC

UNIQUEMENT NE CONVIENT PAS À DES LUMINAIRES TOTALEMENT FERMÉS

N'UTILISEZ PAS AUX DIMMERS

This device is not intended for use with emergency exits.

Cet appareil n'est pas conçu pour être utilisé avec des sorties de secours.

Disconnect power before installing or removing operation.

Déconnectez l'alimentation avant d'installer ou de retirer l'opération.

EN:

- Never disassemble the device.
- Secure the device firmly to prevent falls or injury.
- Keep out of reach of children.
- Operate only within specified temperature and humidity ranges.
- Clean with a dry cloth only.
- Not suitable for emergency lighting.
- Do not use in enclosed fixtures.
- Control brightness and dimming through the app.

FR:

- Ne démontez jamais l'appareil.
- Fixez solidement l'appareil pour éviter les chutes ou les blessures.
- Gardez hors de portée des enfants.
- Utilisez seulement dans les plages de température et d'humidité spécifiées.
- Nettoyez uniquement avec un chiffon sec.
- Non adapté à l'éclairage de secours.
- Ne pas utiliser dans des luminaires fermés.
- Contrôlez la luminosité et l'intensité à l'aide de l'application.

Installation

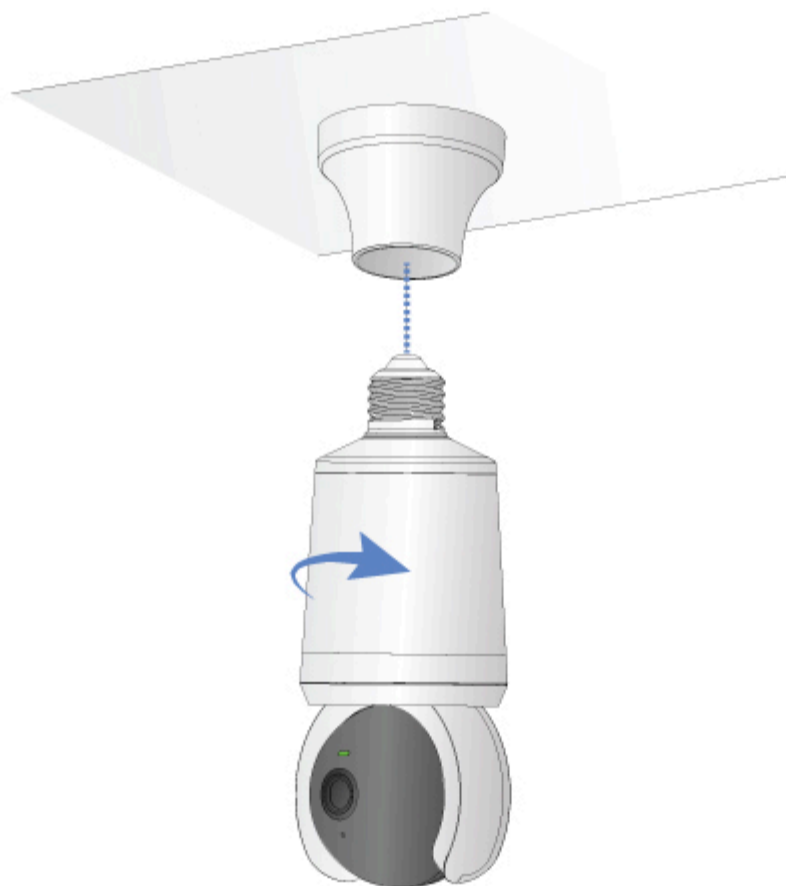
1. Turn off the light.



2. Screw the lightbulb camera into an E26 light socket.

Do not turn on the light until you have downloaded and logged into the app.

! Note: The lightbulb cannot be replaced.

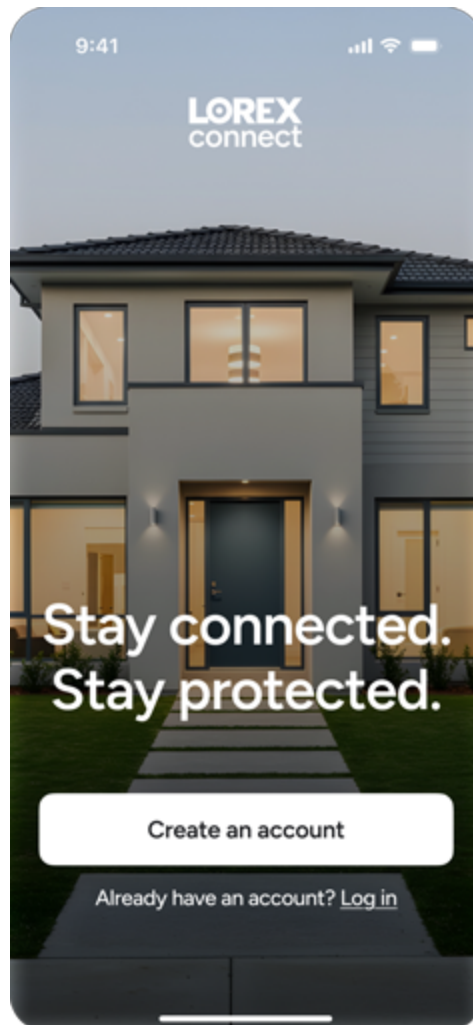


Adding the Lightbulb Camera to the App

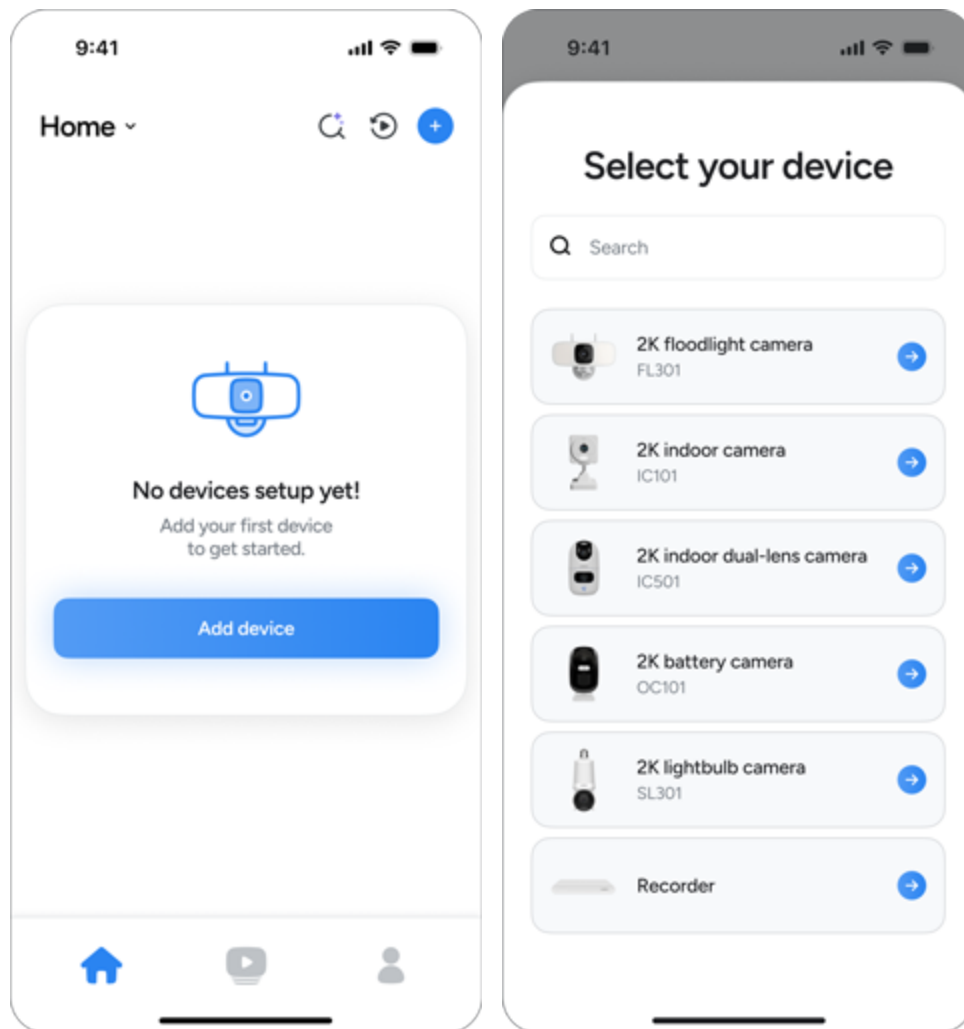
! Note: The screenshots in this guide are for illustration purposes only. The look of the Lorex Connect app may vary slightly depending on your device, app version, or operating

system.

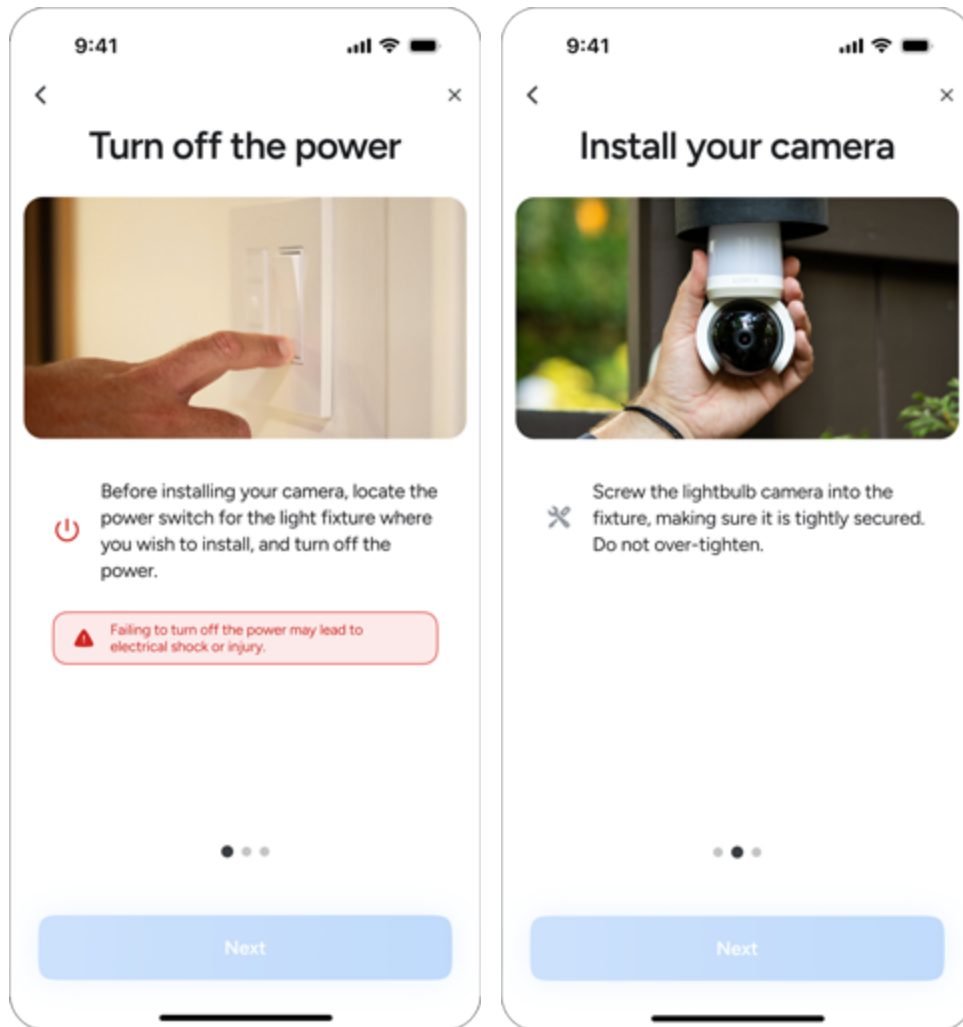
1. Download the **Lorex Connect** app from the App Store or Google Play.
2. Open the app and **log in** or **create an account**.

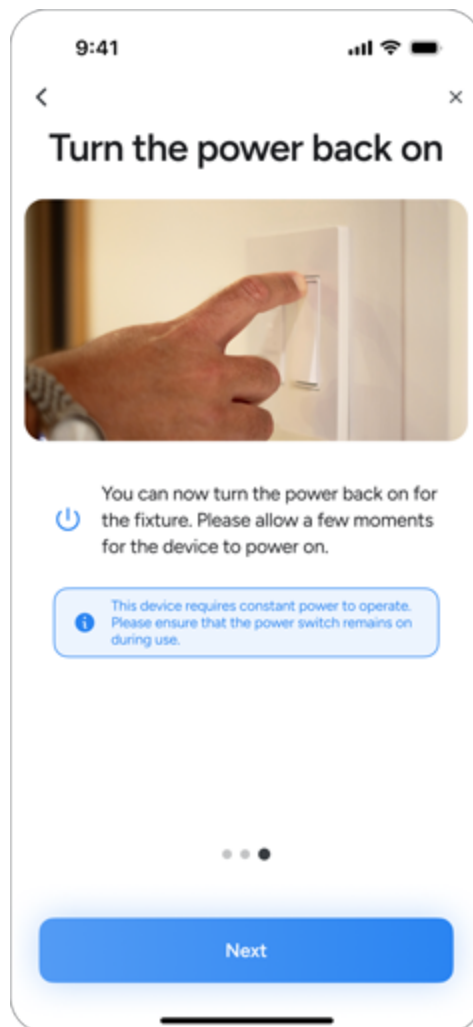


3. Tap **Add device** and select **2K lightbulb camera**.

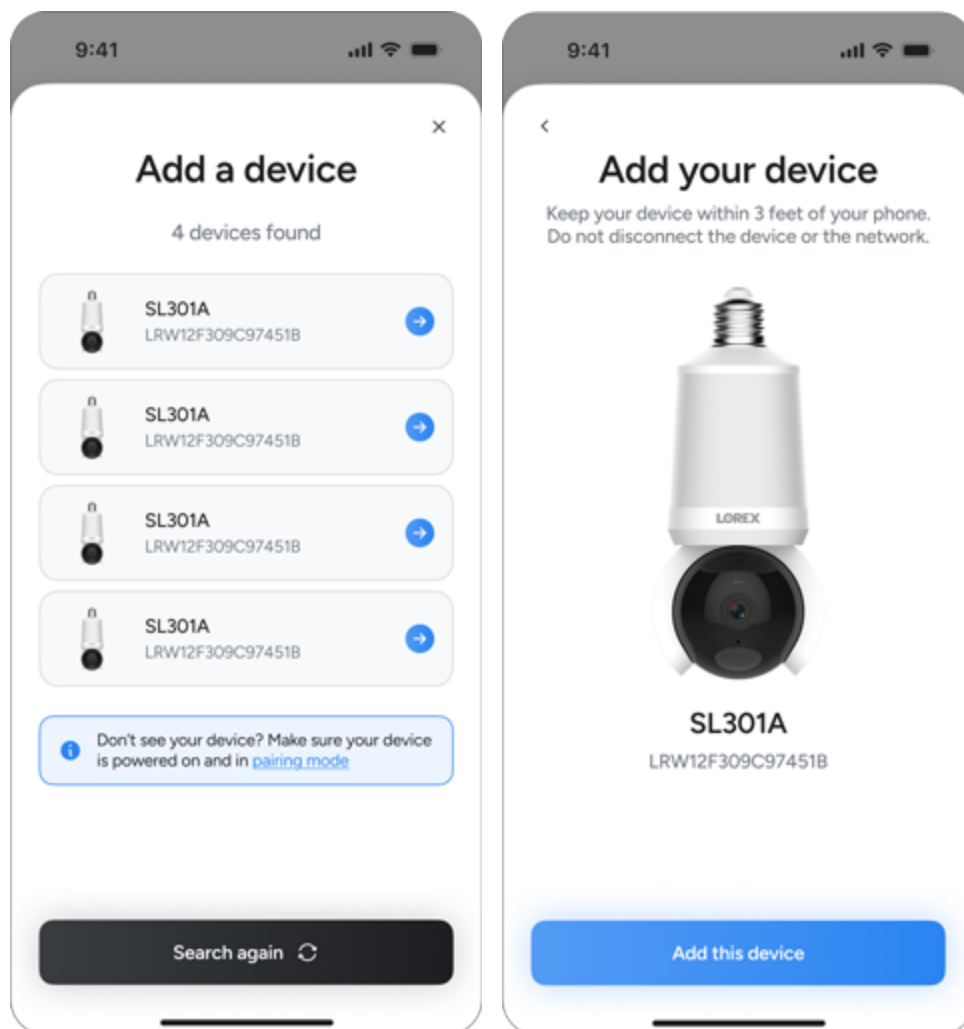


4. Power on the lightbulb camera, then tap **Continue** in the app.

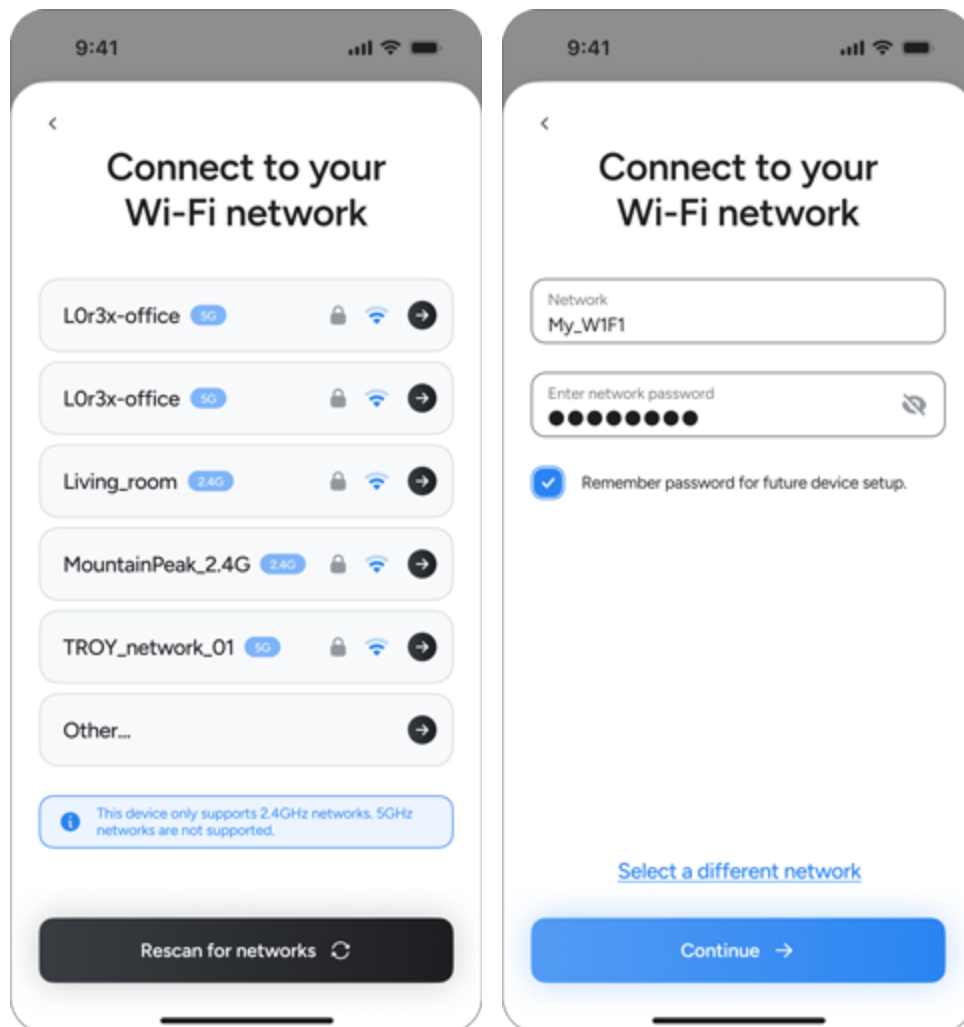




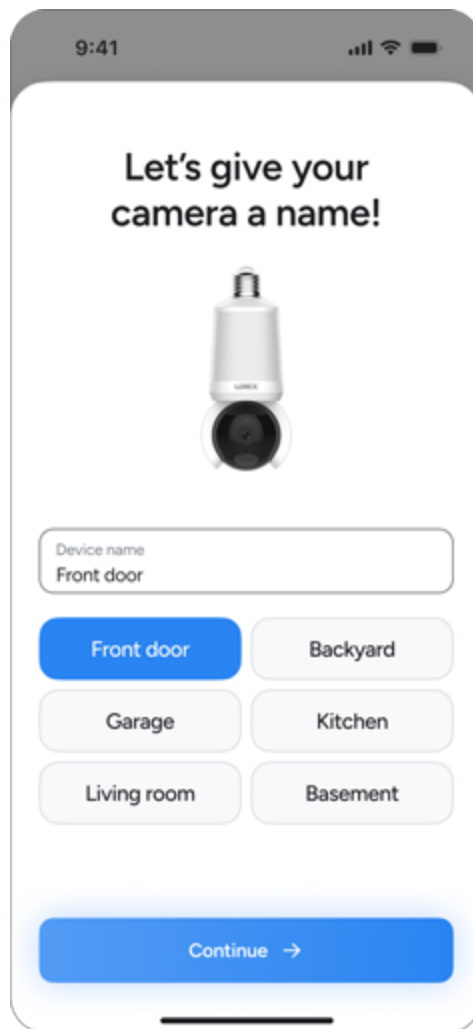
5. Tap the lightbulb camera when it is detected in the app. Tap **Add this device**.



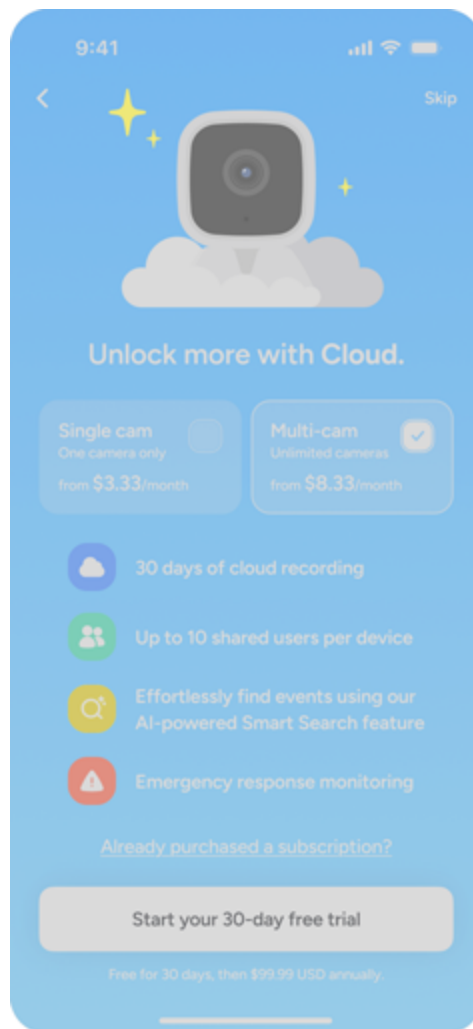
6. Select your **Wi-Fi network** in the app and enter the password.



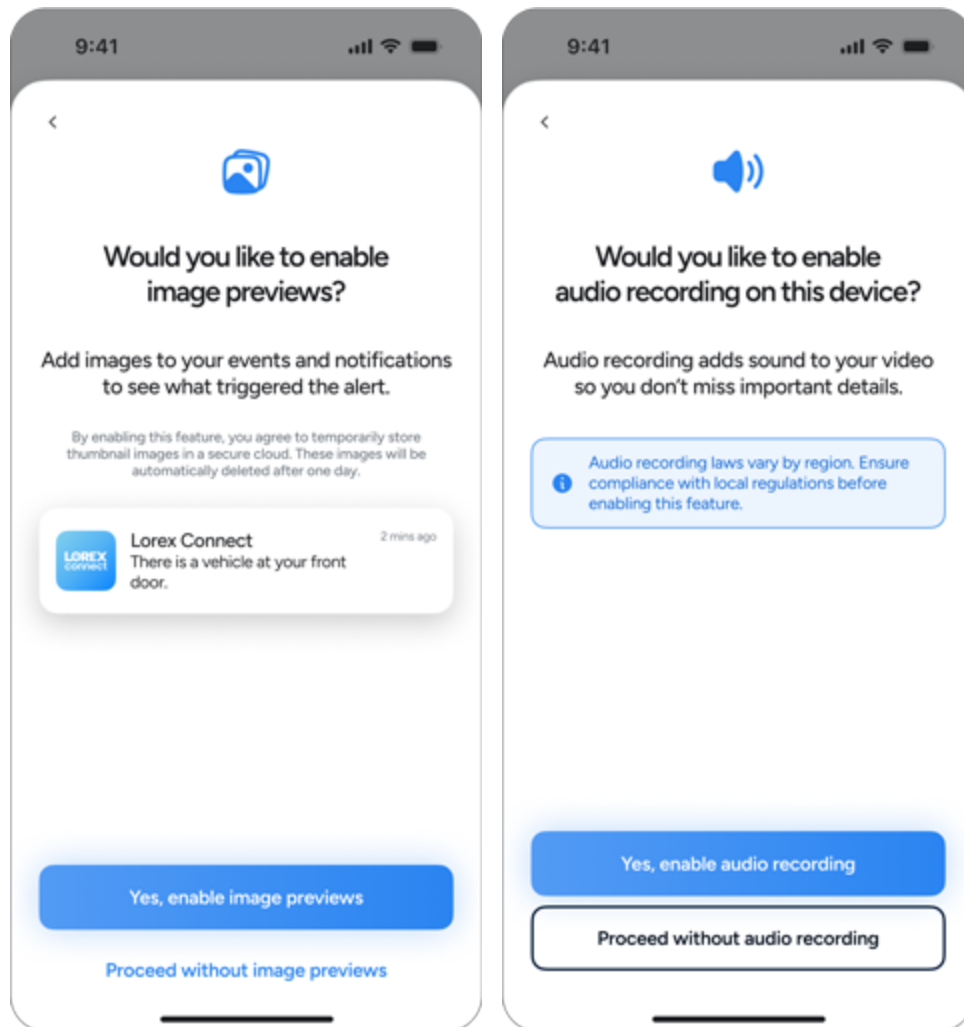
7. Name your lightbulb camera, tap **Continue**, and allow any updates to install if prompted.



8. If you wish, unlock additional features with [Lorex Cloud Storage](#).



9. Adjust your settings to enable image previews and audio recording or proceed without.



⚠ Warning: Audio recording laws vary by region. Ensure compliance with local regulations before enabling this feature.

10. To register your device for warranty, visit www.lorex.com/warranty.

Status LED

The Status LED, located next to the camera lens, displays the current state of your smart lightbulb camera, such as power status, network connectivity, or readiness to pair with the app.

**Blinking Slowly**

The lightbulb camera is on but not yet set up. Open the Lorex Connect app to start setup.

Blinking Slowly (during setup)

The lightbulb camera is trying to connect to Wi-Fi or the Lorex Cloud. Stay close to your router during setup.

Blinking Quickly

The lightbulb camera is connected to Wi-Fi, but there's no internet access. Check your router or modem.

Solid Green

Everything is working! The lightbulb camera is online and ready to use. (You can turn off the Status LED light in the Lorex Connect app if you want).

Fading (resetting)

The lightbulb camera is being reset to factory settings. Keep it powered on until the process finishes.

Fading (updating)

The lightbulb camera is installing a firmware update. Don't unplug or turn it off until the update is complete.

Certification

FCC Statement

This equipment has been tested and found to comply with the limits for a Class B digital device, pursuant to part 15 of the FCC Rules. These limits are designed to provide reasonable protection against harmful interference in a residential installation. This equipment generates, uses and can radiate radio frequency energy, and, if not installed and used in accordance with the instructions, may cause harmful interference to radio communications. However, there is no guarantee that interference will not occur in a particular installation. If this equipment does cause harmful interference to radio or television reception, which can be determined by turning the equipment off and on, the user is encouraged to try to correct the interference by one or more of the following measures:

- Reorient or relocate the receiving antenna.
- Increase the separation between the equipment and receiver.
- Connect the equipment into an outlet on a circuit different from that to which the receiver is connected.
- Consult the dealer or an experienced radio/TV technician for help.

Changes or modifications not expressly approved by the party responsible for compliance could void the user's authority to operate the equipment.

This device complies with Part 15 of the FCC Rules. Operation is subject to the following two conditions: (1) this device may not cause harmful interference, and (2) this device must accept any interference received, including interference that may cause undesired operation.

RF Exposure Warning Statements:

This equipment complies with FCC radiation exposure limits set forth for an uncontrolled environment. This equipment shall be installed and operated with a minimum distance of 20 cm between the radiator and body.

This device contains licence-exempt transmitter(s)/receiver(s) that comply with Innovation, Science and Economic Development Canada's licence-exempt RSS(s). Operation is subject to the following two conditions: (1) This device may not cause interference. (2) This device must accept any interference, including interference that may cause undesired operation of the device.

L'émetteur/récepteur exempt de licence contenu dans le présent appareil est conforme aux CNR d'Innovation, Sciences et Développement économique Canada applicables aux appareils radio exempts de licence. L'exploitation est autorisée aux deux conditions suivantes : (1) l'appareil ne doit pas produire de brouillage; (2) l'appareil doit accepter tout brouillage radioélectrique subi, même si le brouillage est susceptible d'en compromettre le fonctionnement.

Radio Frequency Exposure Statement for IC

This equipment complies with IC exposure limits set forth for an uncontrolled environment. The device can be used in portable exposure conditions. This equipment shall be installed and operated with a minimum distance of 20 cm between the radiator and body.

Cet équipement est conforme aux limites d'exposition IC établies pour un environnement non contrôlé. L'appareil peut être utilisé dans des conditions d'exposition portables. Cet équipement doit être installé et utilisé avec une distance minimale de 20 cm entre le radiateur et le corps.



Search for more topics

Still have questions?

If you still have questions or couldn't find what you're looking for, our support team is here to help—feel free to reach out for further assistance.

[Contact Us →](#)