

EN - Connecting to the Lorex App

1. Download the **Lorex App** by scanning the QR code or searching in your app store.

If you already have the app, ensure it's up to date.

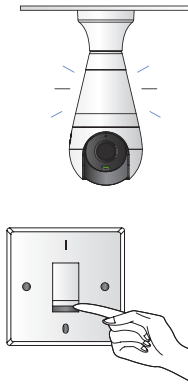


2. Sign up a new Lorex account or log in to your existing one.

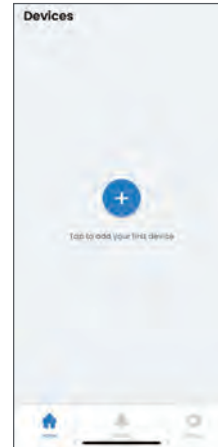


3. Turn on the light to power your lightbulb camera.

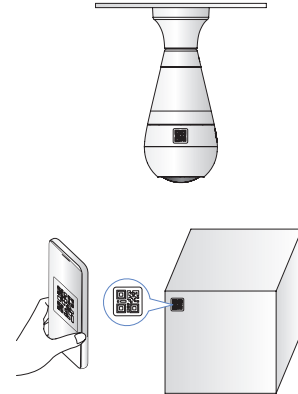
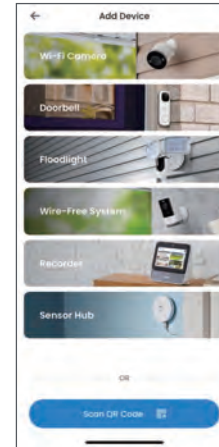
Stay close to the lightbulb camera until setup is complete.



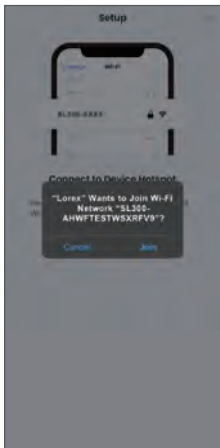
4. In the app, tap the **[+]** icon to add a new device.



5. Tap **"Scan QR Code"** and scan the code on the packaging or the lightbulb camera.



6. Join the lightbulb camera's network hotspot.



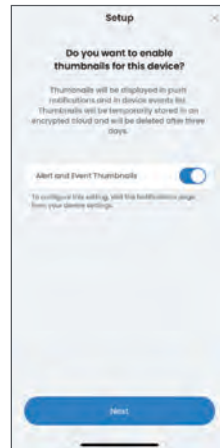
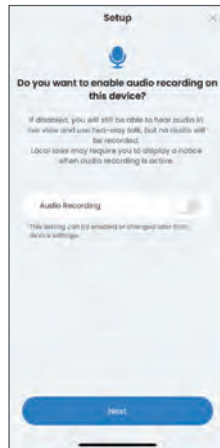
7. Set a device password.



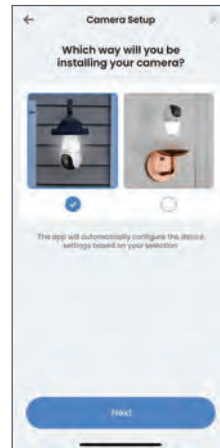
8. Select your Wi-Fi network, enter the password, and connect the lightbulb camera.



9. Enable or disable audio recording and thumbnails.

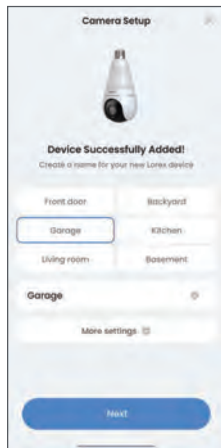


10. Select the lightbulb camera's installation orientation to adjust its view.



Note: App screens and steps may change with updates.

11. Name your device.



12. Optional: Set up **Lorex Cloud** Subscription. For cloud storage options, visit www.lorex.com/cloud.



FR – Connecter à l'application Lorex

1. Téléchargez l'**application Lorex** en scannant le code QR ou en la recherchant dans votre l'App Store. Si vous avez déjà l'application, assurez-vous qu'elle est à jour.
2. Créez un nouveau compte Lorex ou connectez-vous à votre compte existant.
3. Allumez la lumière pour alimenter votre caméra à ampoule. Restez près de la caméra à ampoule jusqu'à ce que l'installation soit terminée.
4. Dans l'application, appuyez sur l'icône **[+]** pour ajouter un nouvel appareil.
5. Appuyez sur « **Scanner le code QR** » et scannez le code situé à l'arrière de ce guide ou sur la caméra à ampoule.
6. Rejoignez le point d'accès réseau de la caméra à ampoule.
Remarque : Les écrans de l'application et les étapes peuvent changer avec les mises à jour.
7. Définissez un mot de passe pour l'appareil.
8. Sélectionnez votre réseau Wi-Fi, entrez le mot de passe, et connectez la caméra ampoule.
9. Activez ou désactivez l'enregistrement audio et les vignettes.
10. Sélectionnez l'orientation d'installation de votre caméra à ampoule pour ajuster sa vue.
11. Nommez votre appareil.
12. Optionnel : Configurez le stockage **Lorex Cloud**. Pour les options de stockage cloud, visitez www.lorex.com/cloud.

ES – Conexión a la aplicación de Lorex

1. Descarga la **aplicación Lorex** escaneando el código QR o buscándola en tu tienda de aplicaciones. Si ya tienes la aplicación, asegúrate de que esté actualizada.
2. Regístrate en una nueva cuenta Lorex o inicia sesión en tu cuenta existente.
3. Enciende la luz para alimentar tu cámara bombilla. Mantente cerca de la cámara de bombilla hasta que se complete la configuración.
4. En la aplicación, toca el icono **[+]** para agregar un nuevo dispositivo.
5. Toca **"Escanear código QR"** y escanea el código en la parte trasera de esta guía o en la cámara bombilla.
6. Únete al punto de acceso de la red de la cámara bombilla.
Nota: Las pantallas de la aplicación y los pasos pueden cambiar con las actualizaciones.
7. Configura una contraseña para el dispositivo.
8. Selecciona tu red Wi-Fi, ingresa la contraseña y conecta la cámara bombilla.
9. Habilita o deshabilita la grabación de audio y las miniaturas.
10. Selecciona la orientación de instalación de tu cámara bombilla para ajustar su vista.
11. Nombra tu dispositivo.
12. Opcional: Opcional: Configura el almacenamiento en Lorex Cloud. Para opciones de almacenamiento en la nube, visita www.lorex.com/cloud.

EN – Need Help?

For detailed instructions and additional support material, scan the QR code or visit:



www.help.lorex.com/SL300-series

FR – Besoin d'aide?

Pour des instructions détaillées et du matériel de support supplémentaire, scannez le code QR ou visitez :

ES – ¿Necesitas ayuda?

Para obtener instrucciones detalladas y material de apoyo adicional, escanea el código QR o visita:

Regulatory Information

IC Statement

This device complies with Industry Canada licence-exempt RSS standard(s).

Operation is subject to the following two conditions:

1. This device may not cause interference, and
2. This device must accept any interference, including interference that may cause undesired operation of the device.

Le présent appareil est conforme aux CNR d'Industrie Canada applicables aux appareils radioexempts de licence. L'exploitation est autorisée aux deux conditions suivantes :

1. L'appareil ne doit pas produire de brouillage, et
2. L'utilisateur de l'appareil doit accepter tout brouillage radioélectrique subi, même si le brouillage est susceptible d'en compromettre le fonctionnement.

This equipment should be installed and operated with a minimum distance 20cm between the radiator and your body.

Cet équipement doit être installé à une distance minimale de 20 cm entre le radiateur et votre corps.

FCC Statement

Please take attention that changes or modification not expressly approved by the party responsible for compliance could void the user's authority to operate the equipment.

This device complies with Part 15 of the FCC Rules. Operation is subject to the following two conditions:

1. This device may not cause harmful interference, and
2. This device must accept any interference received, including interference that may cause undesired operation.

Caution: The user that changes or modifications not expressly approved by the party responsible for compliance could void the user's authority to operate the equipment.

This equipment has been tested and found to comply with the limits for a Class B digital device, pursuant to Part 15 of the FCC Rules. These limits are designed to provide reasonable protection against harmful interference in a residential installation. This equipment generates, uses and can radiate radio frequency energy and, if not installed and used in accordance with the instructions, may cause harmful interference to radio communications. However, there is no guarantee that interference will not occur in a particular installation. If this equipment does cause harmful interference to radio or television reception, which can be determined by turning the equipment off and on, the user is encouraged to try to correct the interference by one or more of the following measures:

- Reorient or relocate the receiving antenna.
- Increase the separation between the equipment and receiver.
- Connect the equipment into an outlet on a circuit different from that to which the receiver is connected.
- Consult the dealer or an experienced radio/TV technician for help.

RF exposure warning

This equipment must be installed and operated in accordance with provided instructions and antenna(s) used for this transmitter must be installed to provide a separation distance of at least 20cm from all persons and must not be co-located or operating in conjunction with any other antenna or transmitter. End-users and installers must be provided with antenna installation instructions and transmitter operating conditions for satisfying RF exposure compliance.

The equipment should be installed and operated with a minimum distance 20cm between the radiator and your body.

For full FCC compliance declarations, visit

<https://www.lorextechnology.com/FCC-compliance>

Declaration of Conformity UKCA



This device complies with UKCA relevant directives and standards.

UK Declaration of Conformity (DoC) can be downloaded from:

<https://www.lorextechnology.com/UKCA-compliance>

Lorex Technology UK Limited

1 Georges Square, Bath Street, Bristol, United Kingdom, BS1 6BA.