

# LOREX®

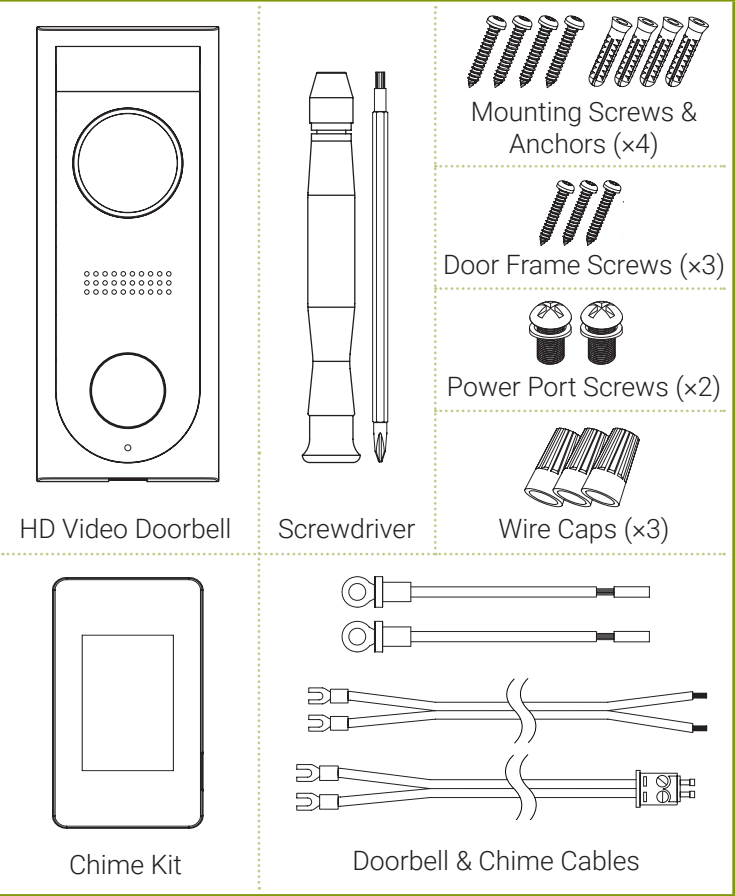
HD Video Doorbell



## LNWDB1 Series Quick Start Guide

lorex.com

### Package Contents



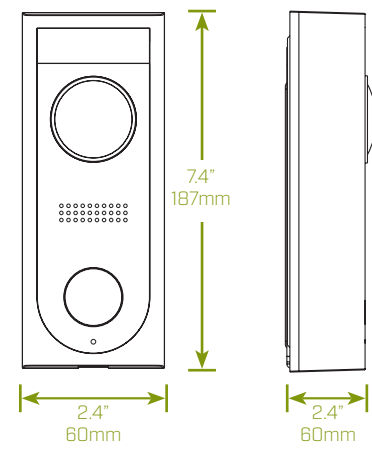
### Safety Precautions

- Read this guide carefully and keep it for future reference.
- Follow all instructions for safe use and handling of the product.
- Use the product within given temperature, humidity and voltage levels noted in the product's specifications.
- Do not disassemble the camera.
- Do not point the camera directly at the sun or a source of intense light.
- Periodic cleaning may be required. Use a damp cloth only. Do not use any harsh, chemical-based cleaners.

### Disclaimers

- Not intended for submersion in water. Installation in a sheltered location recommended.
- This camera includes an Auto Mechanical IR Cut Filter. When the camera changes between Day/Night viewing modes, an audible clicking noise may be heard from the camera. This clicking is normal, and indicates that the camera filter is working.
- Audio recording without consent is illegal in certain jurisdictions. Lorex Corporation assumes no liability for use of its products that does not conform with local laws.

### Dimensions



### FCC Notice

THIS DEVICE COMPLIES WITH PART 15 OF THE FCC RULES. OPERATION IS SUBJECT TO THE FOLLOWING TWO CONDITIONS:

- (1) THIS DEVICE MAY NOT CAUSE HARMFUL INTERFERENCE, AND
- (2) THIS DEVICE MUST ACCEPT ANY INTERFERENCE RECEIVED, INCLUDING INTERFERENCE THAT MAY CAUSE UNDESIRABLE OPERATION.

## Need Help?

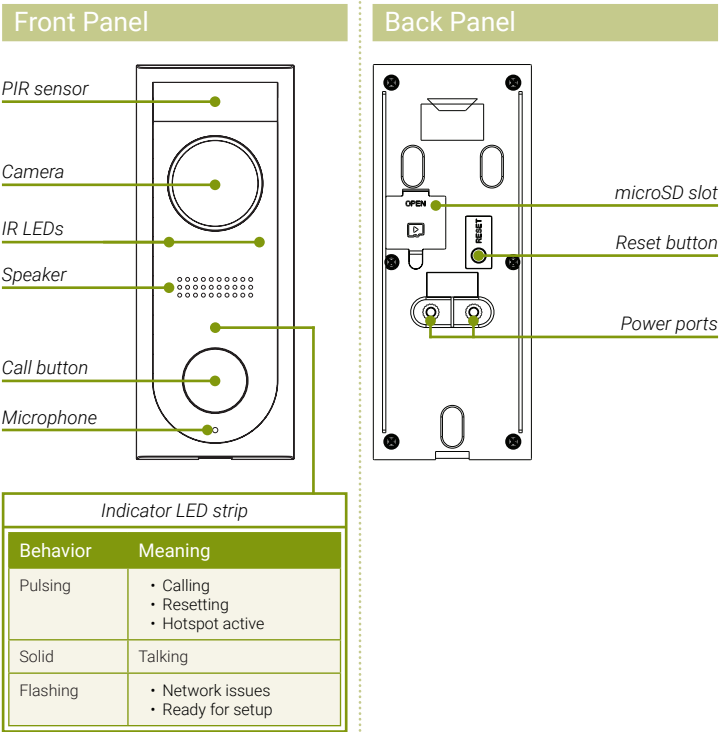
Visit us online for up-to-date software and complete instruction manuals



- 1 Visit [lorex.com](https://lorex.com)
- 2 Search for the model number of your product
- 3 Click on your product in the search results
- 4 Click on the **Downloads** tab

Copyright © 2019 Lorex Corporation  
As our products are subject to continuous improvement, Lorex reserves the right to modify product design, specifications and prices, without notice and without incurring any obligation. E&OE. All rights reserved.

### Product Overview

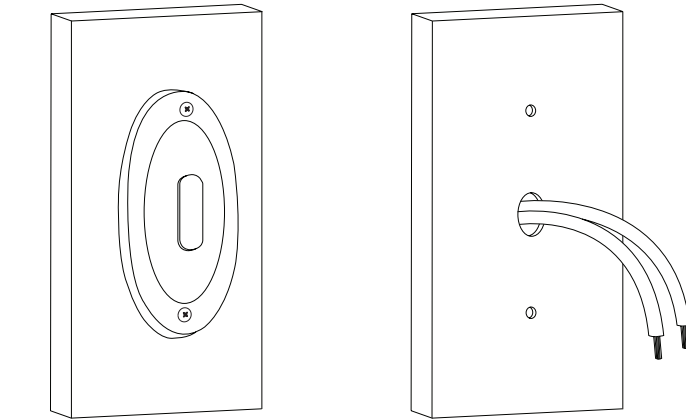


### STEP 1: Preparation

Before beginning setup, there are some essential preparations to make.

#### To prepare for installation:

- **TURN OFF THE POWER RUNNING TO YOUR EXISTING DOORBELL AT THE BREAKER.**
- Remove your existing doorbell and disconnect wiring.



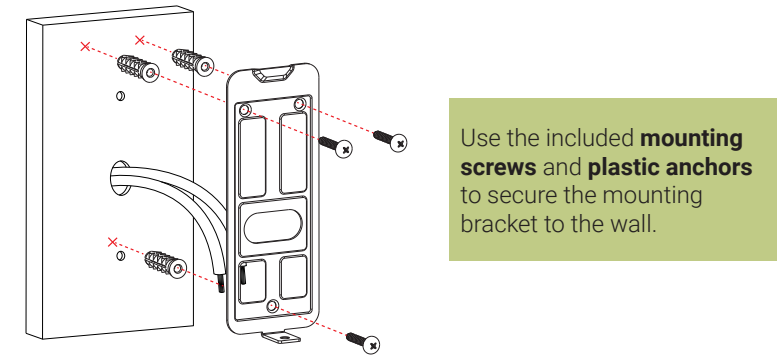
**TIP:** Bend the power cables so they do not fall through the hole in the wall.

- Remove the metal mounting plate from the back of the doorbell by removing the pre-inserted security screw on the bottom using the start end of the included screwdriver.

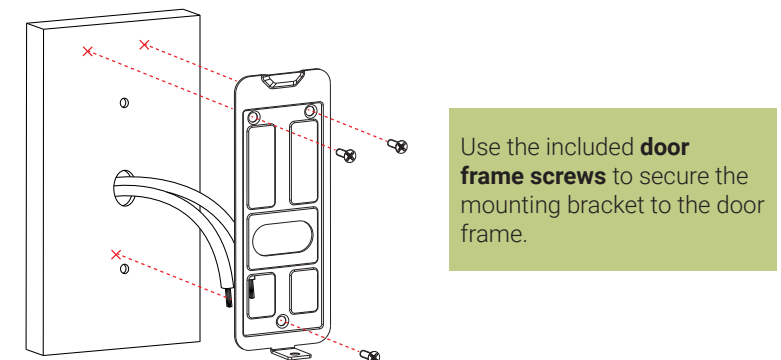
### STEP 2: Secure the mounting bracket

Next, choose one of the following bracket installations based on where you are mounting the doorbell:

#### For installing on brick, stucco, or siding:

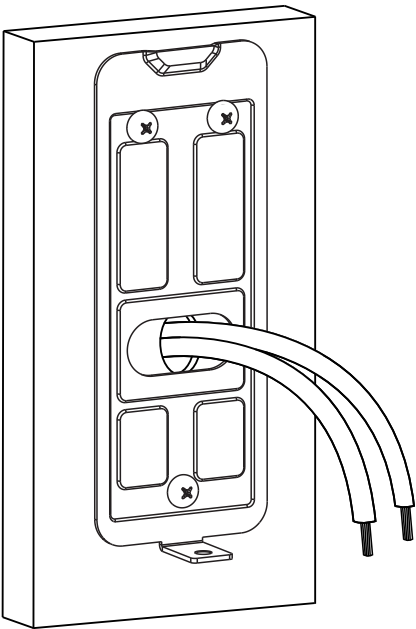


#### For installing on a metal door frame:



#### NOTE

For both installations, ensure the power cables from the wall fit comfortably through the hole in the mounting bracket.

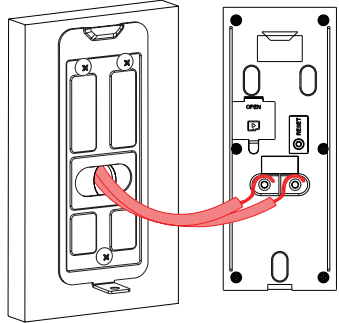


STEP 3: Wiring the doorbell

Next, you will complete the wiring for your new doorbell.

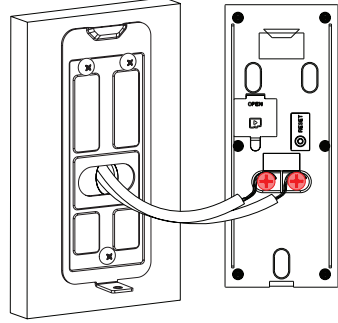
1

Loop the **power cables** around the power ports of the doorbell.



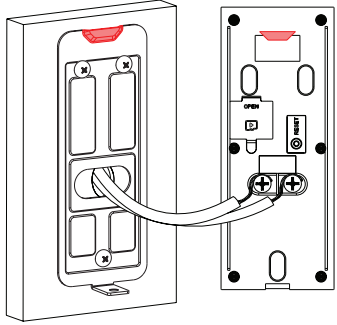
2

Use the **included screws (x2)** to secure the power cables.



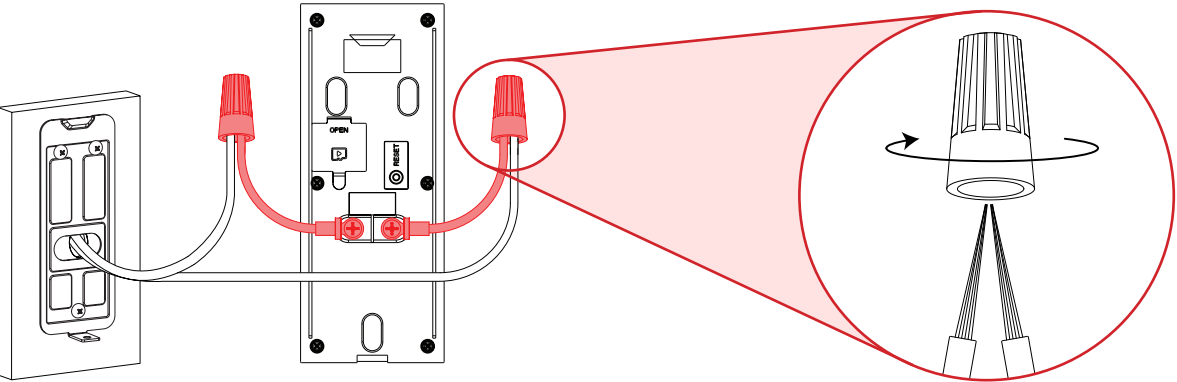
3

Push the wiring through the hole in the wall or door frame. Slide the doorbell down so the **plastic tab on the doorbell** locks into the **notch on the mounting bracket**.



**NOTE**

If the power cables in the wall are not long enough, use the **optional power cable connectors and wire caps**.



STEP 4: Wiring the chime

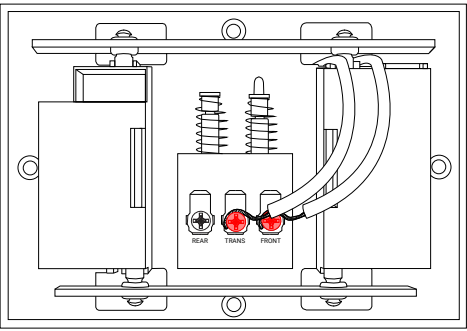
You must determine the type of doorbell chime you have in your home: **electronic or mechanical**.

**Not sure?** If your doorbell chime is a classic *\*ding-dong\** sound, chances are your chime is mechanical. If you are still not sure, remove the cover panel of your chime box - if you find spring-loaded levers and a physical metal chime, you have a mechanical chime.

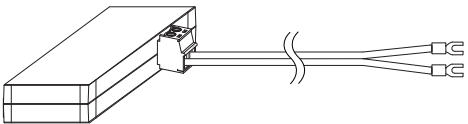
For users with a mechanical chime, follow the extra steps below to complete the installation.

For mechanical chime owners:

1. Remove the cover panel of your doorbell chime box.
2. Loosen the **screws labeled FRONT and TRANS** using the Phillips end of the included screwdriver. Do not remove the screws, and be sure not to detach any connected wiring.

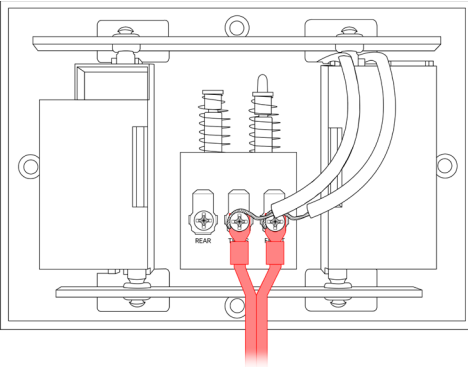


3. Connect the included chime kit to the green terminal on the end of the included wiring as shown below.



4. Connect the **wiring from the chime kit** to the **FRONT** and **TRANS** connectors in the chime box. Ensure that the existing wiring stays connected as well.

**NOTE:** You may connect either wire to either connector.



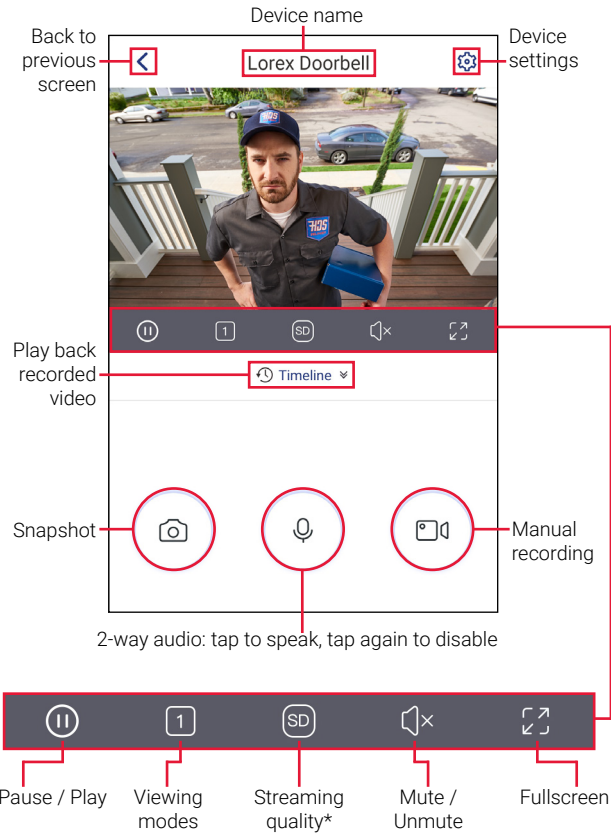
5. Mount the chime kit to the inside of your chime box, or along the cover plate, using the included double-sided tape.

**IMPORTANT:** Ensure the chime kit and wires are not touching the chimes or any moving components inside the chime box, or the doorbell chime will not sound correctly.

Lorex Home Overview

Overview of the live viewing screen and controls in the Lorex Home app. For complete instructions on using the app, see the Lorex Home app manual on your product page at [lorex.com](https://lorex.com).

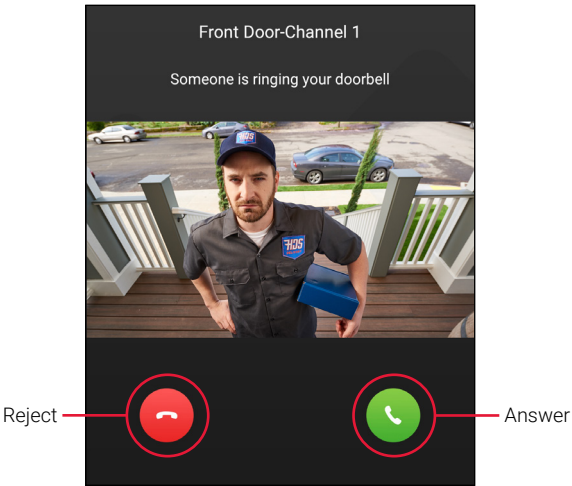
Live viewing screen:



Labels in the screenshot include: Device name (Lorex Doorbell), Back to previous screen, Device settings, Play back recorded video, Timeline, Snapshot, Manual recording, 2-way audio: tap to speak, tap again to disable, Pause / Play, Viewing modes, Streaming quality\*, Mute / Unmute, Fullscreen.

\* Change the streaming quality to **SD** (Standard Definition) to conserve bandwidth while watching live video. This will not impact the quality of recorded video.

Calling screen:



Labels in the screenshot include: Front Door-Channel 1, Someone is ringing your doorbell, Reject, Answer.

STEP 5: Connecting to the Lorex Home app

Finalize the physical installation of the doorbell and begin setup on the Lorex Home app.

1. Download and install the free **Lorex Home** app from the App Store or Google Play Store.
2. Tap the Lorex Home icon to launch the app. Tap **Sign up**, then follow the on screen prompts to create an account. Record your account details below:



Email: \_\_\_\_\_  
Account Password: \_\_\_\_\_

3. Reconnect power to the doorbell at the breaker.
4. Once the status LED on the doorbell is solid blue, tap **+**.
5. Scan the QR code on the back of the doorbell using your mobile device's camera.  
**NOTE:** If your mobile device cannot scan the QR code, tap **Manually enter Device ID**.
6. Press the **RESET** button on the back of the doorbell to enable the device hotspot.
7. Tap **Next** in the Lorex Home app once the hotspot is enabled and the LED strip is pulsing.
8. The app will connect your mobile device to the doorbell's hotspot.

9. Create a secure password for the camera. Record your camera password below:

Doorbell Password: \_\_\_\_\_

10. Select your Wi-Fi network from the list, then enter the password to connect your doorbell to the Internet.
11. Once the status LED on the doorbell is solid blue, tap **Next** to add the doorbell to your Lorex Home account.
12. Set a name for the doorbel and configure date & time preferences, then tap **Complete** to finish the setup.

13. Insert the **included security screw** through the mounting bracket and into the screw hole on the bottom of the doorbell. Fasten tightly using the star-shaped end of the included screwdriver to complete the installation.

