



TOBA MAGIC FOUNTAIN

Toba Magic Fountain Model MF201-01

Carefully read all instructions before operating the fountain.

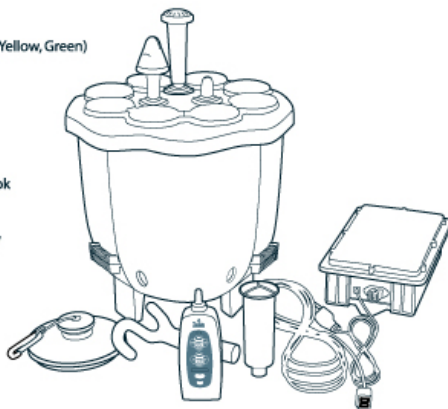
If you have any questions, please visit Toba Fountains website at www.tobafountains.com or call our toll free number: 1(800) 985-TOBA

MF201-16001 Rev.4

PACKAGE CONTENTS

Carefully unpack the fountain and all accessory items. It is recommended to keep the packaging materials in case you need to return your unit for service later.

- 8 Color Lenses (Red, Blue, Yellow, Green)
- Fountain unit with cable
- Power Supply
- 4 Fountain Heads
- Remote Control
- Anchor with cord and hook
- Anchor Positioner Hook
- Instructions and Warranty
- Cable Tie



NOTE:

The Toba Magic Fountain is designed to operate on low voltage 12 volts DC, similar to many outdoor garden lighting systems. Use the same care that you would when handling any electrical device to prevent the housing from being damaged and to prevent water from entering the dry areas of the fountain.

Always inspect the unit for damage to the housings prior to placing the fountain in the pond. Do not place the unit in the pond if there is a crack in the housing that you suspect may cause water to leak inside. Contact Toba Fountains Service Dept if you have any questions.

ASSEMBLE AND SET UP YOUR MAGIC FOUNTAIN

The Power Supply comes in a weatherproof box. It must be mounted to a vertical surface such as a wall or a post with the cables at the bottom of the unit. Choose a location away from heavy direct sprinklers and away from areas where heavy rain water from a roof pours down.

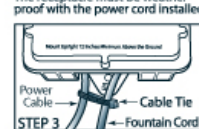
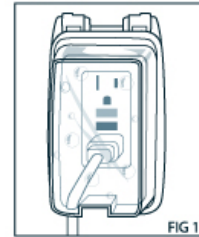
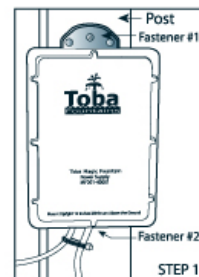
Step 1: With the power switch in the off position, and the power cable unplugged, mount the box on a post with two fasteners, one at the top and one at the bottom of the unit. Mount the power supply a minimum of 12" above the ground, measured at the bottom of the unit. Attach securely with hardware supplied, or with other hardware that resists corrosion.

CAUTION:
DO NOT OPERATE THE FOUNTAIN WITH THE WEATHER-PROOF BOX LAYING DOWN HORIZONTALLY. THIS CAN ALLOW WATER TO ENTER THE BOTTOM OF THE UNIT AND CAN CAUSE A HAZARDOUS CONDITION AND VOID THE WARRANTY.

The power supply must be mounted within 4 feet of a **Weatherproof-In-Use** properly grounded GFCI receptacle (see FIG 1 illustration). Consult a licensed electrician to install the proper weatherproof GFCI outlet.

Step 2: Place the fountain near the pond and lay the fountain cord where you intend it to go leading up to the power supply.

Step 3: Plug the long fountain cord into the power supply and secure it to the power cable with the cable tie included. This will help to prevent the cord from being pulled out.



PLACING THE FOUNTAIN IN THE POND

Step 8: Turn On The Power

Check to make sure that the fountain cord from the fountain is plugged into the power supply and the power supply is turned on.

Step 9: Turn the fountain power ON

The green light should come on. If a red light comes on, refer to the troubleshooting section to diagnose the problem. Do not press the Water or Lights test switches.

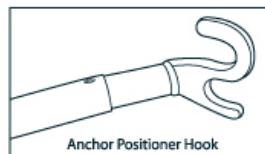
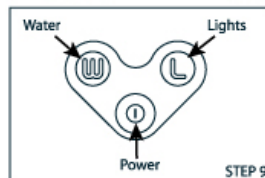
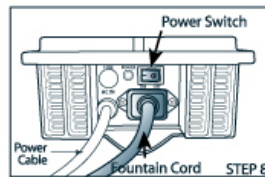
Step 10: Position the fountain and the anchor near the center of the pond. If your pond is in a windy area, you will have to experiment with the best location so that water does not spray out of the pond.

Note: Do Not use the fountain cord to keep the fountain located in the center of the pond. Constant pulling on the cord will damage the wires over time. For the same reason, do not place the anchor on top of the fountain cord. If you wish to hide the cord, you may cover it with gravel or sand. Be sure to leave some slack in the cord so it is not pulled around by the fountain. Do not place any sharp or heavy objects on top of the cord that could damage the insulation.

The fountain cord can be buried if you wish between the pond and the power supply, however be very careful to locate it in an area where no digging will be done that could damage the cord.

Anchor Positioner Hook

Included with the fountain is a large hook that fits to a standard pool skimmer pole. This can be useful to position and retrieve the fountain in deeper ponds. The hook fits around the upper neck of the anchor.



FOUNTAIN OPERATION

Remote Control

The RF remote controls all the functions of the fountain. It operates on a radio frequency, unlike most TV remotes. This allows you to operate the fountain from up to 150 feet away, even from inside your home. The working range depends on local conditions and may be affected somewhat by buildings or walls.

Fountain Modes

Water

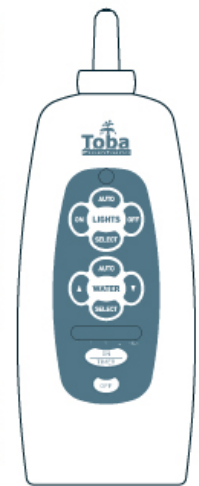
When you first turn the fountain on, it will be in AUTO mode. In this mode, the fountain operates the current fountain head for one minute and then changes to the next style for one minute. The cycle keeps changing until you turn off the fountain or the automatic timer shuts it off (see Auto Shut-Off). If you wish to select a particular fountain style, push the SELECT button. The fountain will remain on the selected style. If you push the SELECT button again, the fountain will change to the next style and remain on that style. Pressing the AUTO button will return the mode to automatic.

Water Height

When you first turn the fountain on, the water height is set to maximum. You can adjust the water height by pressing the ▲ and ▼ buttons. When you turn off the fountain and turn it on again with the remote control, it will remember the water height you set last. If you turn off the fountain at the power panel on the fountain, or disconnect the fountain power, the water height will return to maximum.

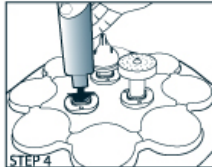
Lights

You control the lights with the lights ON and lights OFF buttons on the remote control. The normal mode is automatic, similar to the water. The lights will change every 45 seconds to the next color, cycling through all the colors continuously. If you wish to select a single color, press the SELECT button. The current light color will remain on. If you push the SELECT button again, the lights will change to the next light color and remain on that color. Pressing the AUTO button will return the mode to automatic.



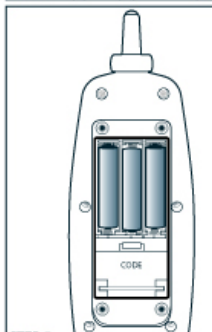
SETTING UP YOUR MAGIC FOUNTAIN Cont'd

Step 4: Four spray heads come shipped with the fountain. Select three heads and install them in the three outlets in the fountain. Press them in while turning them slightly to get a snug fit. Do not use excessive force.



NOTE: Make sure the colored lens covers are securely in place. The lens covers can be placed in any location. Just make sure that the matching colors are opposite each other.

Step 5: Open the battery compartment on the remote control and install 3 fresh AAA alkaline batteries. Replace the battery door, and tighten the screws carefully. Do not over tighten the screws.



Note: The fountain is designed to float in the water to ensure that changes in the water level do not affect the fountain operation. We recommend a minimum of 14" depth in your pond to allow room for the fountain and the pond anchor and a short length of cord. Do not use the fountain cord as a substitute for the anchor.

Step 6: Attach The Anchor

Attach the anchor cable to the bottom of the fountain with the hook. Adjust the anchor cord by wrapping the cord around the hooks on the bottom of the anchor. Leave enough cord between the anchor and the hook to allow for the normal change in water level in your pond. Do not let the pond water level go below 12 inches deep where the fountain is located.

Step 7: Install 3 Filters

There are three removable filters in your fountain. They are located about 5" below the water line. Slide each filter into a slot on the side of the fountain until it is all the way in. These keep leaves and other foreign matter from getting into the pump and clogging the distributor and fountain heads. DO NOT operate the fountain without all three filters installed.



FOUNTAIN OPERATION Cont'd

NOTE: If the water is not running, the lights will stay on for only a few seconds and then shut off. This is for checking the lamps when the unit is out of the water.

Automatic Shut-Off

The ON button on the remote control is used to turn on the fountain and also to set the Auto Shut-Off timer. If you push the ON button once, the fountain will turn off in 1 hour. If you push the on button twice, the time advances to 2 hours as shown on the remote control Timer indicator. Each time you push the ON button the time advances by one hour. The MAX setting will operate the fountain for 8 hours.

Three seconds after the last button is pushed, the ON signal and Shut-Off time are sent to the fountain. The timer indicator will turn off after 5 more seconds.

If the fountain is already running and you select a new Auto Shut-Off time, the fountain spray will drop down for one second and then resume, indicating that the new timer signal has been received.

NOTE 1: If electricity to the fountain power unit is interrupted while the fountain is running, the fountain is designed to shut off, resetting the auto shut-off timer.

NOTE 2: Under normal use, the Remote Control batteries should last for 1-2 months. If the fountain does not respond to the remote control, first try moving closer or replacing the remote control batteries. Also, make sure that the power switch on the fountain is turned on and the light near the switch is green. If the light near the switch is Red that means that there is an internal problem with the fountain. Refer to the troubleshooting section.

MAINTAINING YOUR FOUNTAIN

Filter Screens

Your fountain is designed to require very little maintenance. The most important thing is to regularly clean the inlet filter screens. Just slide out each screen, rinse it off and push it back in. Do not run the fountain unless you have a screen inserted into each of the three inlets. Failure to do so can damage the pump, distributor, or fountain heads, and void the warranty. Additional screens can be ordered from www.tobafountains.com



HOW TO CHANGE THE FREQUENCY CODE

The RF remote in your fountain is capable of operating at up to 150 feet in ideal conditions. This can cause interference with neighbors who also have a Toba Magic Fountain. If you have determined that your neighbor's frequency is the same as yours, follow the instructions below to change the frequency of the remote control and the fountain.

Step 1: Open the remote control battery door and locate the small door inside labeled "Code." Also open the triangular door marked "Fuse" on the top of the fountain.

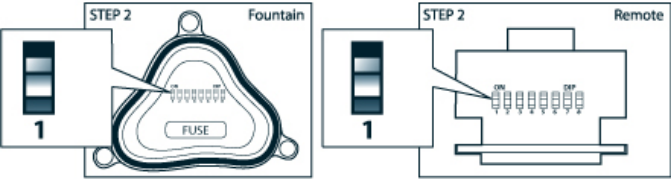
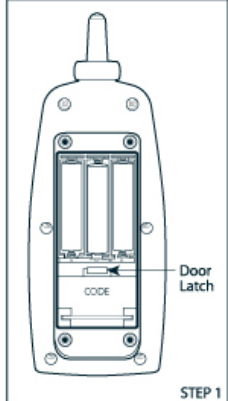
Step 2: You will see in each location a small rectangular block with 8 switch tabs. These set the frequency code for the fountain and the remote. The positions of the switch tabs will exactly match in the remote and in the fountain.

Step 3: To change the code: Using a toothpick or the tip of a ballpoint pen, switch one of the tabs either up or down. Counting from the #1 position, take note of which tab you changed.

Note: Your fountain code **MUST MATCH** your remote code.

In this way, you can set two remotes to operate the same fountain, or multiple fountains to work with the same remote.

You may have to experiment with different codes to eliminate interference among neighbors. There are 256 possible combinations or codes.



MAINTAINING YOUR FOUNTAIN Cont'd

Replacing light bulbs

What you will need: Dry soft cloth, Replacement bulbs.

CAUTION:

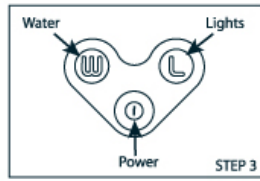
1. Follow instructions carefully and use caution when changing halogen bulbs. These lamps can be very hot.

2. Use only **12v 20 watt MR-11** halogen bulbs. Use of a higher wattage bulb will generate excessive heat and will damage the unit and void the warranty. Replacement bulbs can be ordered directly from www.tobafountains.com

Step 1: Remove the fountain from the pond and place it on a level surface.

Step 2: Remove water from around the bulb area by tilting the fountain on it's side for 30 seconds to let it drain.

Step 3: With the fountain upright, the power should be on (green light on the fountain switch panel). Test the bulbs by pushing the L (lights) and W (water) buttons at the same time and hold for 2 seconds. The unit will go into a self-test mode and each pair of lights will illuminate for 1 second, going around the circle. Take note of which lamp is burned out.



TROUBLESHOOTING

If the fountain fails to respond to the remote control, first check the batteries in the remote. If new batteries fails to correct the problem, next check the power going to the fountain. If a circuit breaker has tripped, or the GFCI protection on the outlet has tripped, first locate and correct the AC power problem before trying to use the fountain.

If power to the fountain power box is ok, and the fountain power light is on, retrieve the fountain from the pond to check for possible problems.

The Toba Magic Fountain has several safety interlock features designed to protect the fountain in case something interferes with normal operation. The GREEN power indicator on the fountain will change to RED when a fault is detected.

The following conditons can cause a fault condition:

1. Blockage of the pump or distributor - possibly caused by ice or dirt.
2. Low voltage condition caused by a problem with the power cable or the power source.
3. Attempting to run the fountain with no water.

If you suspect that there is ice in the fountain, remove the fountain from the pond, remove the fountain heads and the three filters, and run warm (not hot) water backwards through the fountain head outlet holes. One outlet will be lined up with the pump and water should run freely through the unit and come out the filter holes.

If cleaning the fountain heads and the pump area corrects the blockage, the fault condition can be reset by turning off the fountain at the fountain power switch and turning it back on. If the fault condition has been eliminated, the power light will once again glow GREEN.

If the fault condition persists, or for other troubleshooting help, please visit the Toba website at www.tobafountains.com and click on "Service." If you continue to have problems, please call our Customer Solutions hotline at **1(800)-985-TOBA** M-F 9am - 6pm Pacific Time.

CHANGING HALOGEN BULBS Cont'd

Step 4: Remove the colored lens cover by carefully pulling directly upward.

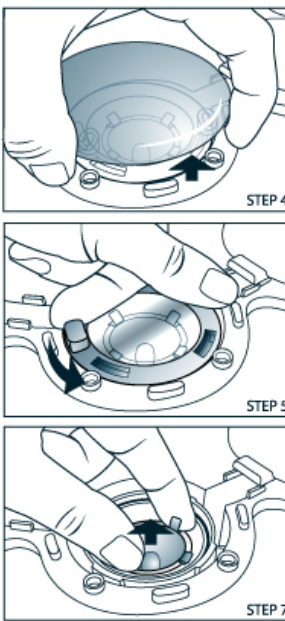
Step 5: Turn the lamp cover counter-clockwise about ¼ turn and remove the cover. Place on the soft cloth to keep it clean.

Step 6: Carefully remove the glass and set it on the cloth with the cover.

Step 7: Grasp the metal clip attached to the top of the bulb and remove the old bulb by gently pulling straight out.

Step 8: If the new bulb does not have the metal clip, carefully remove the old clip and snap on the new bulb. Holding the new bulb by the metal clip, align the bulb pins with the socket and push in gently all the way. Avoid getting finger prints on the front glass of the bulb.

Step 9: Inspect the o-ring seal and the glass to make sure that they are both clean, and then place the glass over the o-ring, making sure it goes fully into the space. Next, replace the cover and turn clockwise about ¼ turn gently until it clicks into place. Finally, replace the colored lens cover. Make sure that lens colors match on opposite sides of the fountain.



FCC COMPLIANCE

The Toba Magic Fountain complies with the limits for a Class B digital device, as specified in Part 15 of the FCC rules. This compliance helps ensure against radio interference with other equipment in a typical residential location. If you do not install or use the fountain properly, radio energy may be generated that can interfere with radio or television communications. Also, it is possible that interference can occur even in a proper installation. You can determine if the fountain is the cause by unplugging the fountain or discontinuing use of the remote control.

In case of interference, the customer may perform minor adjustments such as the following.

- Increase the distance between the fountain or remote control and the equipment with the interference.
- Move or realign the antenna or receiving device, such as your broadcast TV antenna.

If these remedies do not stop the interference, you should contact a licensed radio/television technician, or call the Customer Service Center at 800-985-TOBA for assistance.

Note: Modifications not authorized by the manufacturer may void user's authority to operate this device.

Transmitter frequency: 433.92 MHz

TOBA FOUNTAINS
Fountain Valley, CA 92708
www.tobafountains.com
1(800)-985-TOBA