

## **WiDRIVE User Guide**

<b>A. WiDRIVE Technology Overview .....</b>	<b>2</b>
<b>B. Steps Overview .....</b>	<b>4</b>
<b>C. WiDRIVE Installation .....</b>	<b>5</b>
<b>D. WiDRIVE Username/Password configuration.....</b>	<b>7</b>
<b>E. Joining the Wireless Network to access WiDRIVE (Ad-hoc mode).....</b>	<b>8</b>
<b>F. Joining the Access Point Wireless Network to access WiDRIVE (Infrastructure mode)....</b>	<b>11</b>
<b>G. Configuring WiDRIVE Wireless HDD .....</b>	<b>12</b>
<b>H. Trouble-shooting .....</b>	<b>16</b>

## **A. WiDRIVE Technology Overview**

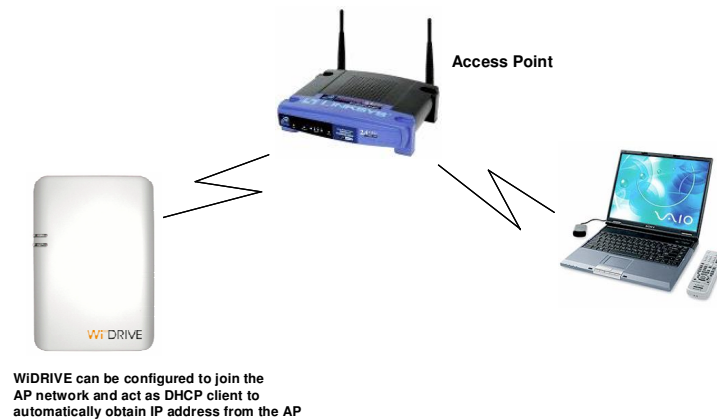
1. The WiDRIVE Wireless HDD is accessed by Notebook or PC through a WIFI interface.
2. WiDRIVE supports the 802.11g WIFI standard with both 64 and 128 bit WEP encryption support.
3. WiDRIVE can be configured to work under Ad-hoc or Infrastructure mode.
4. Ad-hoc mode is used under condition when there is no available wireless Access Point router. This is a one to one connection between WiDRIVE and Notebook/PC.
5. In the Ad-hoc mode, WiDRIVE can act as a DHCP Server, automatically issuing the IP address to Notebooks/PCs.



WiDRIVE wireless HDD acts  
as DHCP Server providing I  
P address to  
Notebook

Note: As a beginning, operate the WiDRIVE under Ad-hoc mode (factory default)

6. Infrastructure mode is used when there is an existing or available Access Point where all wireless Notebooks/PCs are connected to.
7. In the Infrastructure mode, WiDRIVE can be configured to automatically join the AP network and operate as DHCP Client to obtain the IP address from Access Point.



8. Hence, the WiDRIVE usage is seamless in both operation modes, minimizing the need for user to always configure their IP addresses.
9. The WiDRIVE Wireless HDD can be configured through standard web browser for configuring WiDRIVE to operate in Ad-hoc or Infrastructure mode.
10. The default administrator username/password to configure WiDRIVE is 'admin/admin'.

## **B. Steps Overview**

### **Step 1**

- Install WiDRIVE driver on to the Notebook/PC

### **Step 2**

- Configure Username/Password on the Notebook/PC

### **Step 3**

- Power-up WiDRIVE

### **Step 4**

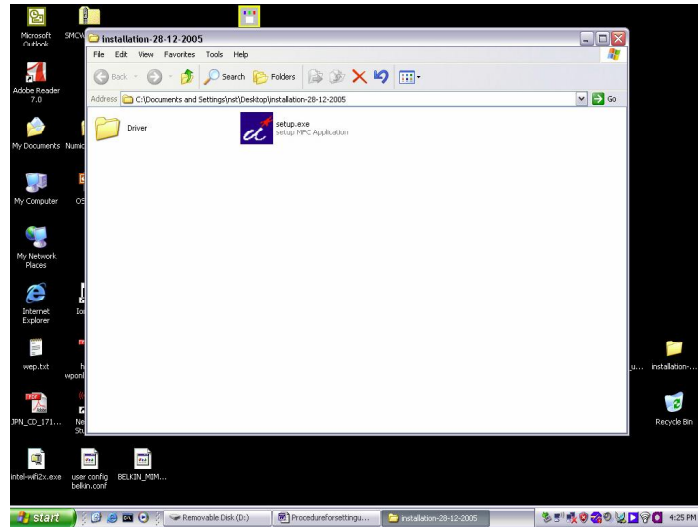
- Open up 'Wireless Network Connection' at the Taskbar properties
- Select the Wireless Network to join

### **Step 5**

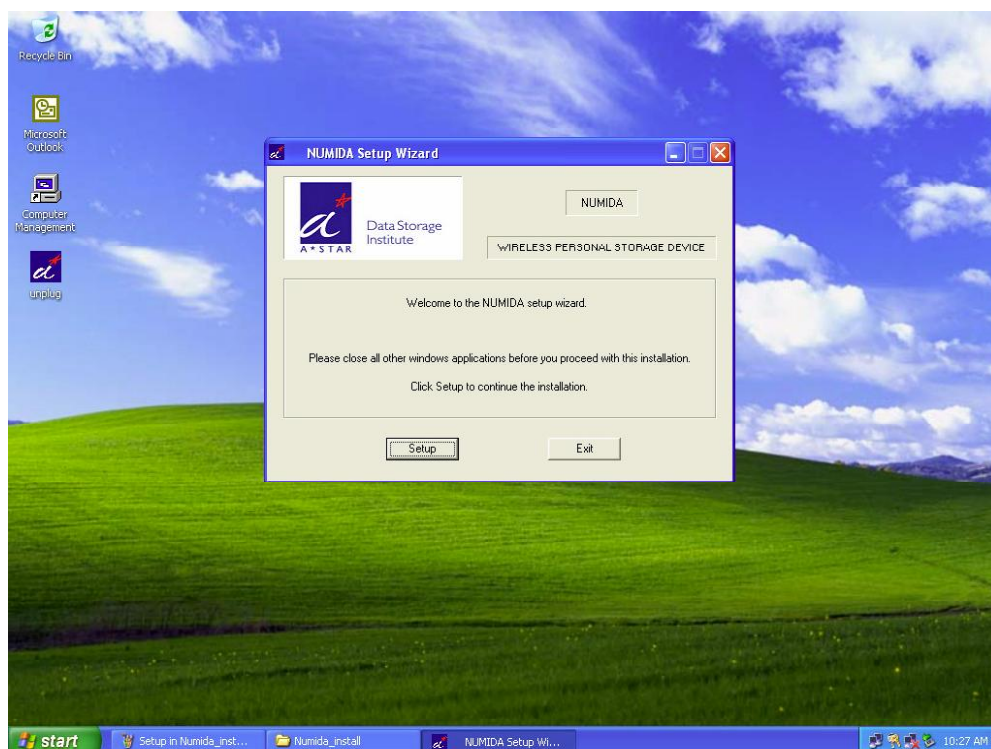
- Open Windows Explorer and wait a while for the WiDRIVE Wireless HDD drive icon to appear

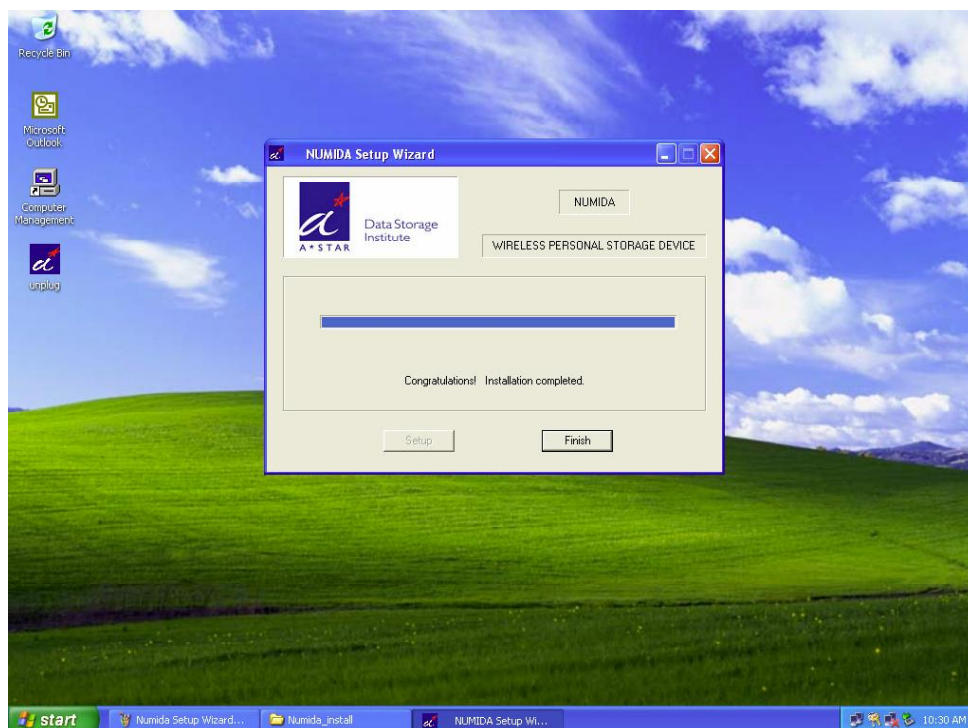
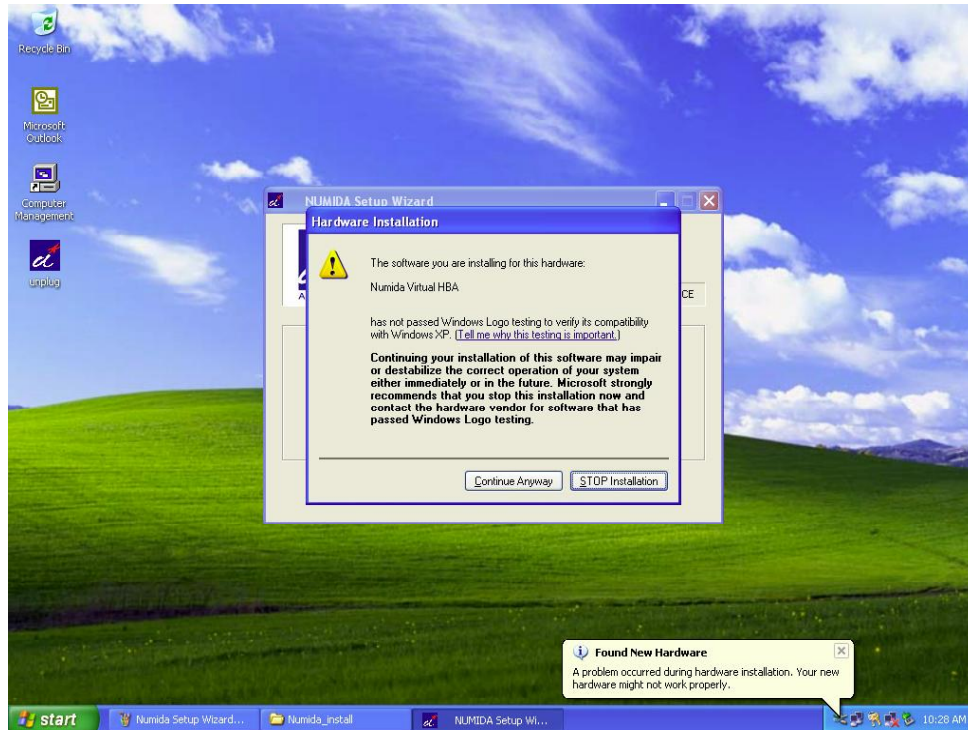
### C. WiDRIVE Installation

1. Install WiDRIVE using the setup utility (setup.exe)



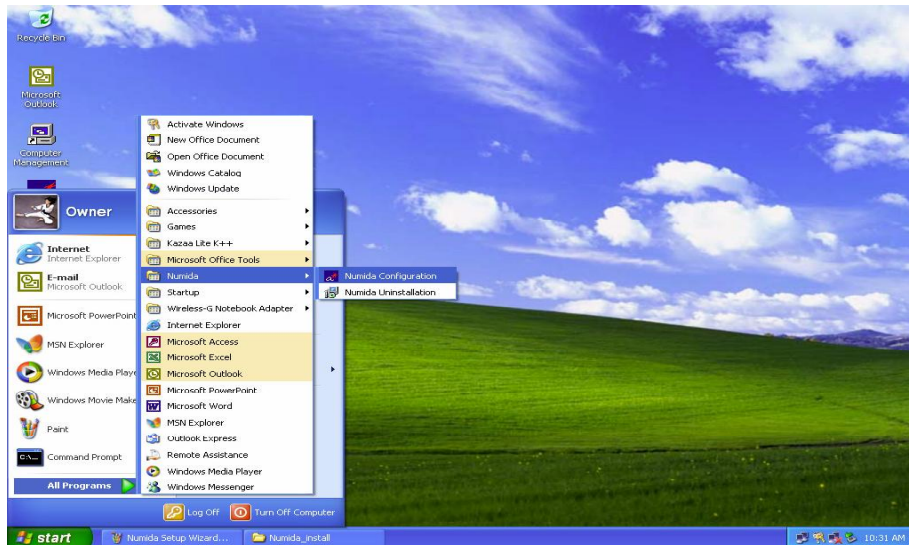
2. Start the installation process by selecting 'Setup' and 'Continue Anyway' buttons



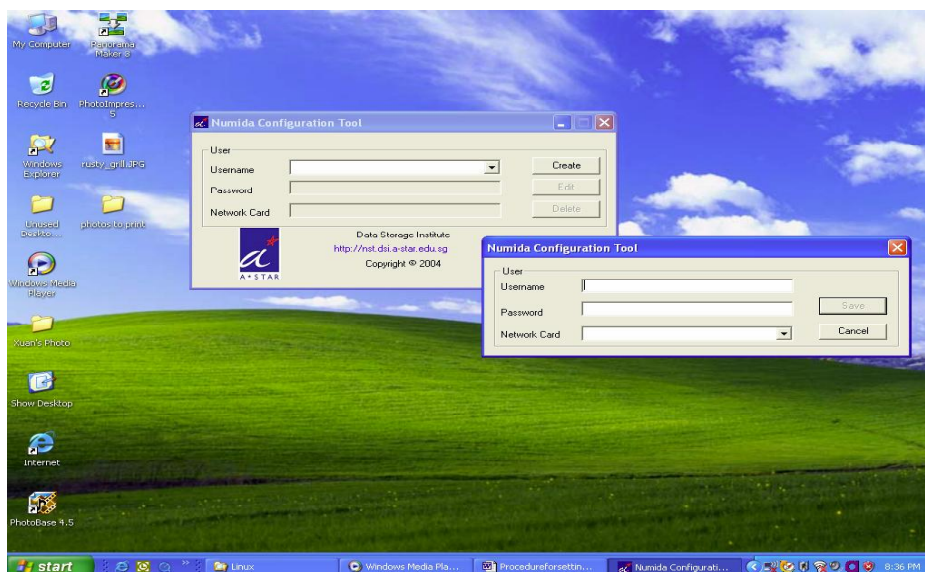


#### D. WiDRIVE Username/Password configuration

1. Access to the WiDRIVE Wireless HDD is based on Username/Password verification.
2. Configure the Username/Password on the Notebook/PC by selecting the WiDRIVE->WiDRIVE Configuration in the Program Menu.



3. Click on the 'Create' button and enter the Username and Password accordingly (the default Username for the WiDRIVE Wireless HDD is "WiDRIVE" and Password is "9876543210") and 'Save' the entries.





### **E. Joining the Wireless Network to access WiDRIVE (Ad-hoc mode)**

1. Turn on the WiDRIVE Wireless HDD.
2. Open the Windows Wireless Network Connection

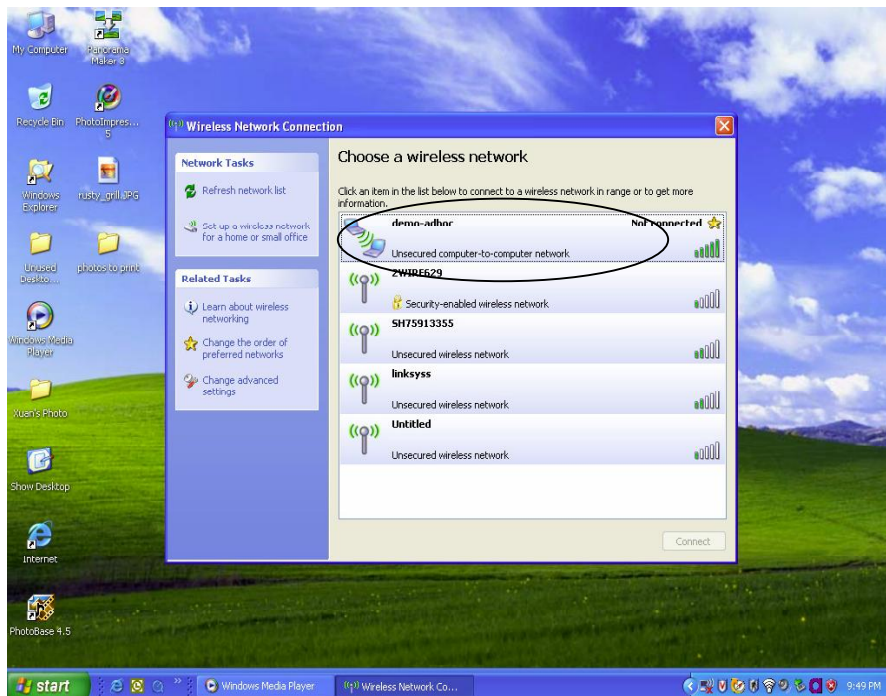




Right click and select 'View available wireless networks':



3. Select to join/connect to the WiDRIVE wireless Ad-hoc network (defaulted SSID as 'demo-adhoc')



4. Launch the windows explorer to see the logical drive (may have to wait for about 20 seconds).

