

## Operation manual for software

### 1. Outside view for auxiliary equipment

Front view



Back view, we use the right RS232 connector



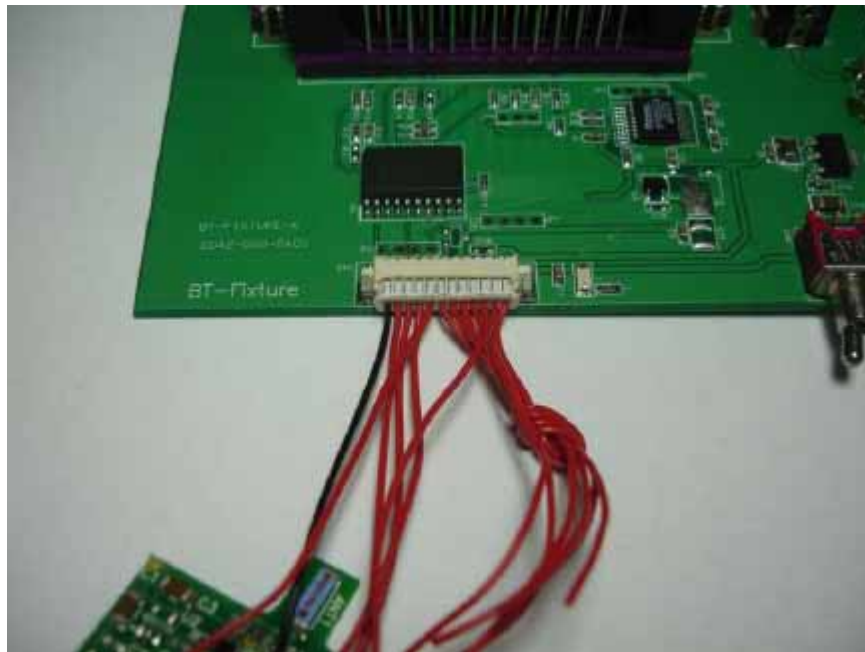
Connection for RS232



Power supply by USB port



## 2. Connecting EUT and auxiliary equipment



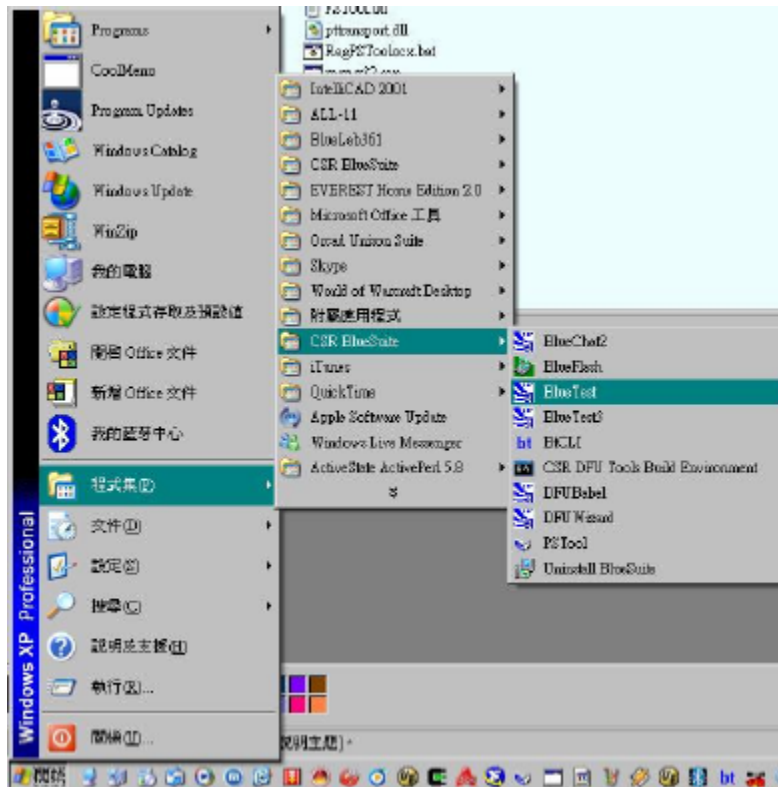
## 3. Turn on the switch on the right corner of auxiliary equipment and the blue indicating light would shine.



4. Install the Blue suite software to your PC before testing.



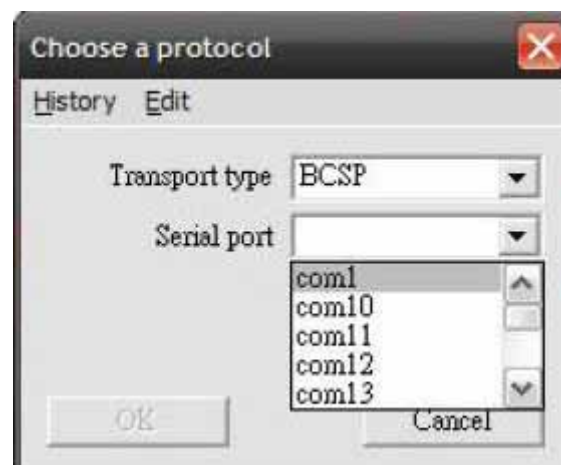
5. Select “Blue Test”



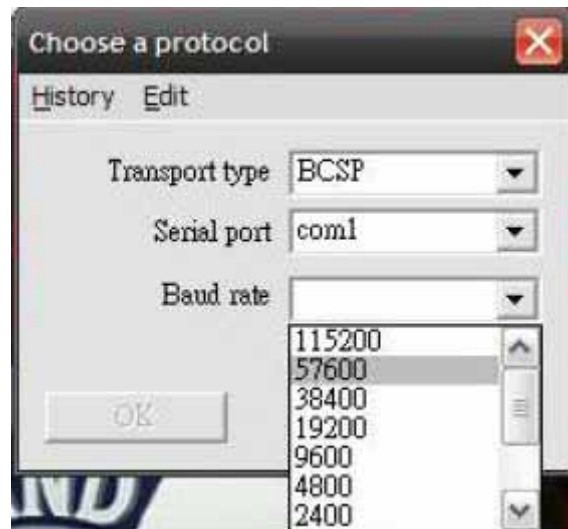
**6. Transport type select “BCSP”**



**7. Serial port select “COM1”**

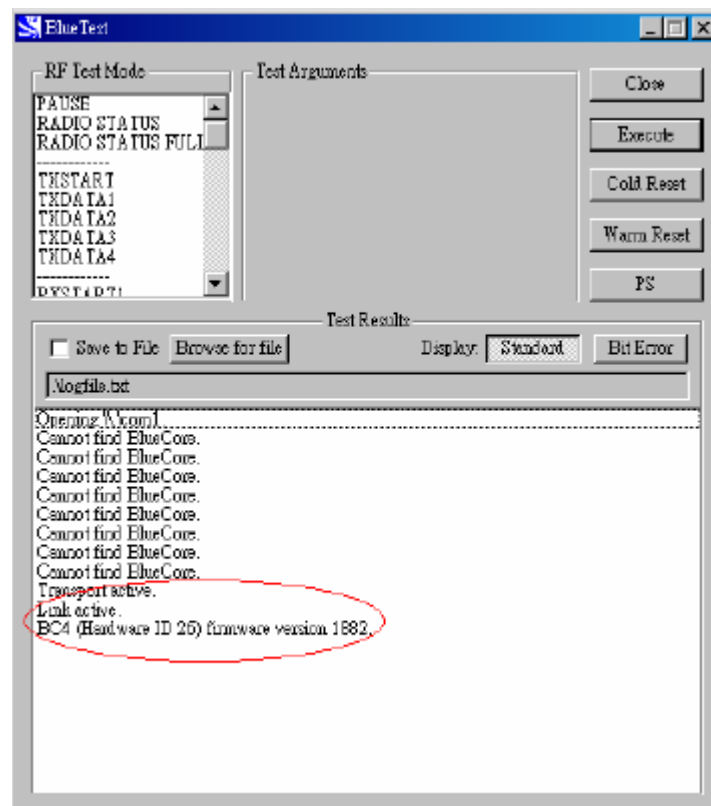


8. Baud rate choose “57600”



9. After the work above finished, choose “OK”

10. Connecting success!



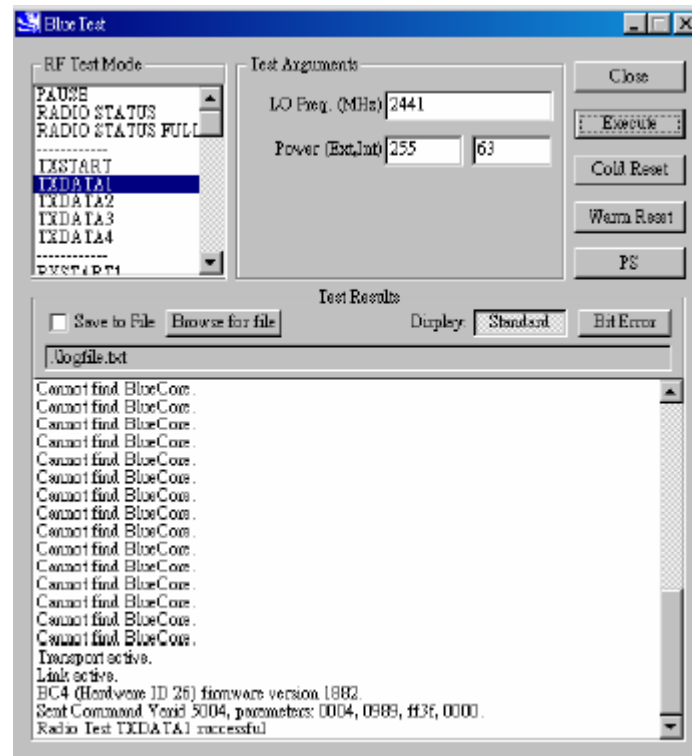
## 11. Bandwidth, Power Density setting

RF Test Mode choose “TXDATA1”

LO Freq(MHz) 2402 Power 255 63 for channel 0

LO Freq(MHz) 2441 Power 255 63 for channel 39

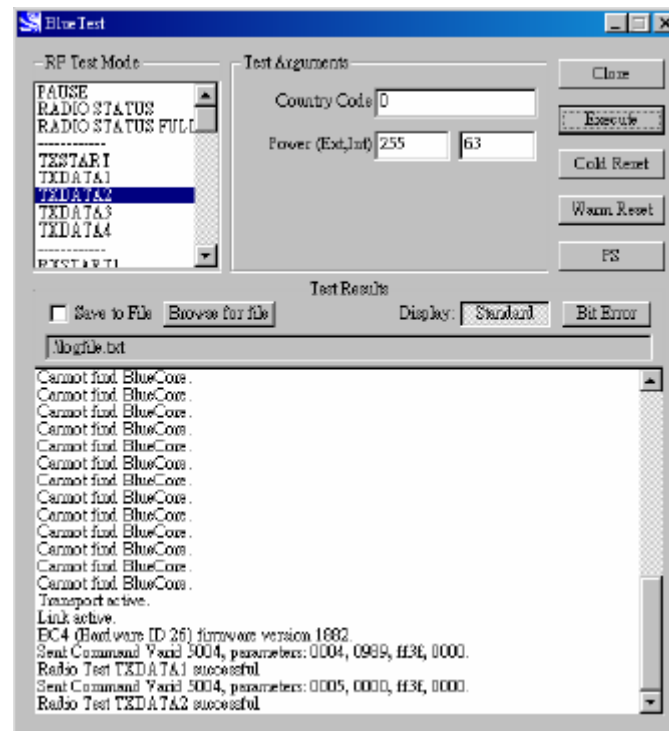
LO Freq(MHz) 2480 Power 255 63 for channel 78



## 12. Hopping Mode set up

RF Test Mode choose “TXDATA2”

Country Code 0 Power(Ext,Int) 255





### 13. Dwell Time setting

RF Test Mode choose “CFG PKT”

[DH1]Packet Type 4 Packet Size 27

[DH3]Packet Type 11 Packet Size 183

[DH5]Packet Type 15 Packet Size 339

