



Smoke Detector Manual (SSSD1)

Introduction

The SimpliSafe Smoke Detector (SSSD1) is a single station photoelectric smoke alarm, designed to sense smoke that comes into the alarm chamber. It does not sense gas, heat, or flame. This smoke alarm is designed to give early warning of developing fires with an alarm sound from its built-in siren. The built-in wireless transmitter can also cause a remote base station siren to sound. These sirens can provide precious time to escape before a fire spreads. However, the smoke alarm makes such pre-warning of fire accident possible, only if the smoke alarm is located, installed, and maintained properly as described in this User's Manual.

The smoke detector also monitors low battery, wall tamper, and sensor malfunction. These trouble conditions will cause an audible chirp from the smoke detector as described in the "Operating Modes" section below.

Smoke Detector Location

Smoke alarms should be installed in accordance with the National Fire Protection Association (NFPA) Standard.

NFPA Standard 72, Section 2-4:

"2-4.1.1 Smoke alarms shall be installed outside of each separate sleeping area in the immediate vicinity of the bedrooms and on each additional story of the family living unit including basements and excluding crawl spaces and unfinished attics.

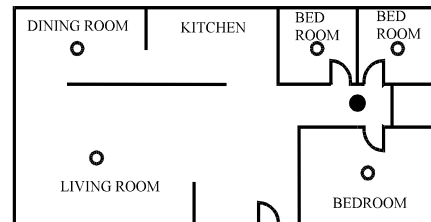
The provisions of 2-4.1.1 represent the minimum number of alarms required by this standard. It is recommended that the householder consider the use of additional smoke alarms for increased protection for those areas separated by a door from the areas protected by the required smoke alarms under 2-4.1.1 above. The recommended additional areas are living room, dining room, bedroom(s), kitchen, attic (finished or unfinished), furnace rooms, utility room, basement, integral or attached garage, and hallways not included in 2-4.1.1 above. However, the use of additional alarms remains the option of the householder."

WARNING: The Smoke Detector is intended for residential use only and is not to be used in a commercial application.

CAUTION (as required by the California State Fire Marshall)

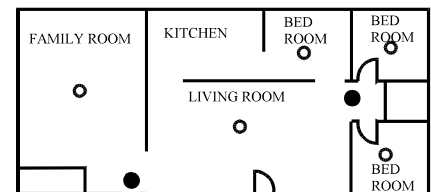
"Early warning fire" detection is best achieved by the installation of fire detection equipment in all rooms and areas of the household as follows: (1) A smoke alarm installed in each separate sleeping area (in the vicinity, but outside of the bedrooms), and (2) Heat or smoke alarms in the living rooms, dining rooms, bedrooms, kitchens, hallways, attics, furnace rooms, closets, utility and, storage rooms, basements and attached garages."

Recommended locations (single sleeping area)



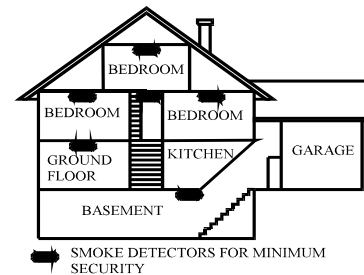
- SMOKE DETECTORS FOR MINIMUM SECURITY
- SMOKE DETECTORS FOR MORE SECURITY

Recommended locations (multiple sleeping areas)



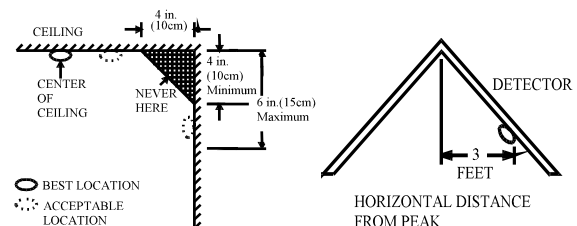
- SMOKE DETECTORS FOR MINIMUM SECURITY
- SMOKE DETECTORS FOR MORE SECURITY

Recommended locations (multi-floor residence)



- SMOKE DETECTORS FOR MINIMUM SECURITY

Install the sensor in the center of the



Suggested smoke detector locations:

- In the hallway outside each bedroom area.
- On every floor of a multi-floor home or apartment and a minimum of two alarms in any household.
- At both ends of a bedroom hallway if the hallway is more than 40 feet long.
- At the bottom of a basement stairwell.
- At the top of a first-to-second floor stairwell.
- As close to the center of the ceiling as possible. If this is not practical, put the alarm on the ceiling, no closer than 4 inches (10 cm) from any wall or corner. For sloped ceilings, mount alarm 3 feet measured horizontally from the highest point of the ceiling. If ceiling mounting is not possible and wall mounting is permitted by your local and state codes, mount the alarm high on the wall (about 4 and 6 inches from the ceiling).

Locations to avoid

To avoid false alarms and optimize detection of real alarms, do not install a smoke detector:

- In locations where combustion particles may normally be present, such as kitchens with few windows or poor ventilation, garages where there may be vehicle exhaust, near furnaces, hot water heaters, and space heaters. We recommend leaving at least 20 feet between the detector and such locations.
- In damp or very humid areas, or near bathrooms with showers. Moisture in humid air can enter the sensing chamber, and cause a false alarm. Install the smoke alarm at least 10 feet away from bathrooms.
- In very cold or very hot areas. If the temperature goes above or below the sensors operating range, it will not work properly.
- In very dusty or dirty areas. Dirt and dust can build up on the alarm's sensing chamber, making it overly sensitive, or block openings to the sensing chamber, making it less sensitive.
- Near fresh air vents or very drafty areas like air conditioners. Heaters or fans, fresh air vents and drafts can drive smoke away from smoke alarms.
- In a dead air space at the top of a peaked roof, or in the corners between ceilings and walls. Dead air may prevent smoke from reaching an alarm.
- In insect-infested areas. If insects enter an alarm's sensing chamber, they may cause a nuisance alarm. Where bugs are a problem, get rid of them before putting up an alarm.
- Near fluorescent lights. Electrical "noise" from fluorescent lights may cause nuisance alarms. Install smoke alarms at least 5 feet (1.5 meters) from such lights.
- Make sure no door or other obstruction blocks the path of smoke to the alarm.

IMPORTANT: You should never disable the unit to avoid nuisance alarms. Instead, relocate the alarm to a better location.

WARNING: Never remove the battery from the smoke alarm to stop a nuisance alarm. Open a window or fan the air around the smoke alarm to get rid of the smoke. The alarm will turn itself off when the smoke is gone. If nuisance alarms persist, attempt to clean the smoke alarm as described in this User's Manual, or relocate the alarm to a better location.

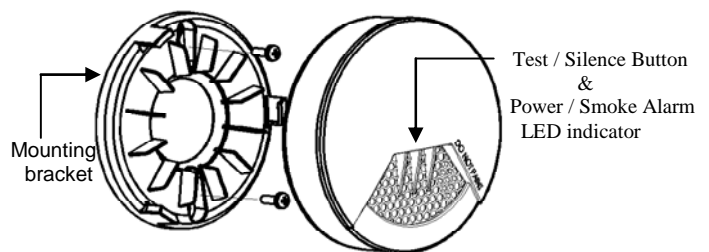
WARNING: Do not stand close to the smoke alarm when the alarm is sounding. The alarm is loud in order to wake you in an emergency. Too much exposure to the horn at close range may be harmful to your hearing.

Installing the Smoke Detector

Install the Smoke Detector on a ceiling or wall:

1. Remove the mounting bracket from your unit by rotating it counterclockwise.
2. Mount the bracket on the ceiling or wall, using the included screws and wall anchors.
3. Push the Smoke Detector onto the mounting bracket and turn it clockwise until it clicks into place. Pull outward on the alarm to make sure it is securely attached.

NOTE: When the alarm is first mounted on its bracket, the alarm horn will chirp once. This means the smoke alarm is working normally and also indicates that the battery is positioned properly.



WARNING: Do not connect smoke alarms to any other alarm or auxiliary device. Connecting anything else to this alarm will keep it from working properly.

CAUTION: This smoke alarm comes with cover latches that will prevent the smoke alarm cover from closing if battery is not installed. This tells you that the smoke alarm will not work until a new battery is properly installed.

Battery Installation

1. Open the battery compartment
2. Install a new CR123A 3V battery, making sure the + and - ends of the battery are aligned properly.
3. After the battery is installed and the smoke alarm is mounted on its bracket, you will hear a chirp which indicates the unit is receiving battery power.

NOTE: Use only a CR123A 3V battery. This smoke alarm may not operate properly with other kind of battery.

Testing

Test your smoke detector weekly by pressing the test button (the clear button on the front of the sensor) for 4 seconds. The siren will sound (3 beeps, pause, 3 beeps) and the light will flash continuously and rapidly.

If the smoke alarm beeps three times with the yellow LED flashing three times in 43 seconds, it indicates the smoke alarm is not working properly - it must be repaired or replaced.

This is the only way to make sure that the smoke alarm unit is working properly. If the unit fails to test properly, have it repaired or replaced immediately.

Caution: Continuous exposure to the high sound level of this alarm over an extended period of time may cause hearing loss.

WARNING: Never use an open flame of any kind to test your alarm. You may damage the alarm as well as your home. The built-in test switch accurately tests all functions as required by Underwriters' Laboratories.

WARNING: When you are not testing the unit and the alarm siren sounds, the alarm is a warning of a possible serious situation, which requires your immediate attention.

Silence Feature

Press the "test/silence" button (the clear button on the front of the detector) to temporarily quiet an alarm for up to 10 minutes. If smoke is still present around the smoke alarm after 10 minutes of silence, the unit will re-alarm.

Operating Modes

The LED light on the front of the sensor indicates the operating mode of the smoke alarm:

Red LED blinks 3 times rapidly: The detector has sensed a potentially dangerous level of smoke. The buzzer and alarm siren will also sound. Please follow the "in case of fire" instructions.

Red LED blinks about once per minute: your detector is functioning normally.

Red LED blinks AND chirps once per minute: the Smoke Detector battery is low battery. This low battery warning signal should last for up to 30 days, but you should install a new CR123A battery immediately.

Yellow LED blinks three times per minute: this indicates the unit has malfunctioned and needs to be replaced.

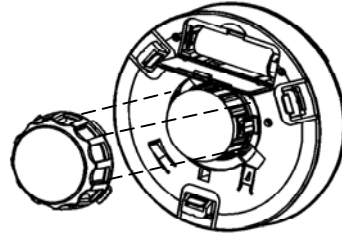
Yellow LED blinks three times and chirps 3 times every 30 seconds: this indicates that the unit is no longer operating within its intended sensitivity and must be replaced.

Yellow LED stays on solid and alarm sounds: the smoke alarm is not mounted correctly in its bracket.

Maintenance tips

To keep your alarm in good working order open the cover and vacuum the dust off the alarm's sensing chamber at least once a month.

- Remove the battery before cleaning.
- Use soft brush attachment on your vacuum to carefully remove any dust, especially on the openings of the sensing chamber. Never use water or cleaners.
- Replace the battery after cleaning. Test the smoke alarm to make sure battery is working correctly.



WARNING! LIMITATIONS OF SMOKE ALARMS

Wireless smoke alarms are very reliable, but may not work under all conditions. No fire alarm provides total protection of life or property. Smoke alarms are not a substitute for life insurance.

Smoke alarms require a source of power to work. This smoke alarm will not operate and the alarm will not sound if batteries are dead or not installed properly.

Smoke alarms may not be heard. A sound sleeper or someone who has taken drugs or alcohol may not awaken if the alarm is installed outside a bedroom. Closed or partially closed doors and distance can block sound. This alarm is not designed for the hearing impaired.

Smoke alarms may not always activate and provide warning early enough. Smoke alarms only activate when enough smoke reaches the alarm. If a fire starts in a chimney, wall, roof, on the other side of closed doors, or on a different level of the property enough smoke may not reach the alarm for it to alarm.

Smoke alarms are a significant help in reducing loss, injury and even death. However, no matter how good a detection device is, nothing works perfectly under every circumstance and we must warn you that you cannot expect a smoke alarm to ensure that you will never suffer any damage or injury.

Fire prevention and escape

The purpose of an early warning smoke alarm is to detect the presence of fire in its early stages and sound an alarm giving the occupants time to exit the premises safely.

Avoid fire hazards

- Do not smoke in bed.
- Do not leave children home alone.
- Never clean with flammable liquids such as gasoline.
- Properly store materials. Use general good housekeeping techniques to keep your home neat and tidy. A cluttered basement, attic, or other storage area is an open invitation to fire.

- Use combustible materials and electrical appliances carefully and only for their intended uses. Do not overload electrical outlets.
- Do not store explosive and/or fast burning materials in your home.
- Even after proper precautions have been taken, fires can start. Be prepared.

In case of fire


In the event of a fire, you should do the following:

- Leave immediately. Don't stop to pack or search for valuables.
- In heavy smoke, hold your breath and stay low, crawl if necessary. The clearest air is usually near the floor.
- If you have to go through a closed door, carefully feel the door and door knob to see if undue heat is present. If they seem cool, brace your foot against the bottom of the door with your hip against the door and one hand against the top edge. Open it slightly. If a rush of hot air is felt, slam the door quickly and latch it. Unvented fire tends to build up considerable pressure. Be sure all members of the household realizes and understands this danger.
- Use your neighbor's phone or a street fire alarm box to call the fire department. The job of extinguishing the fire should be left to the professionals

Be prepared

Practice the following steps to prepare you and your family in the event of a fire:

- Perform fire drills regularly. Use them to assure recognition of an alarm signal.
- Draw a floor plan and show two exits from each room. It is important that children be instructed carefully, because they tend to hide in times of crisis.
- Establish one meeting place outside the home. Insist that everyone meet there during an alarm. This will eliminate the tragedy of someone reentering the house for a missing member who is actually safe.
- If you have children and/or physically challenged people residing in your household, use window decals to help emergency personnel identify the sleeping quarters of these individuals.

 **WARNING!!** Smoke alarms CANNOT provide warnings for fires resulting from explosions, smoking in bed or other furniture, ignition of flammable liquids, vapors and gases, children playing with matches or lighters.

WARNING: Smoke detectors are not to be used with detector guards unless the combination has been evaluated and found suitable for that purpose.

WARNING: This device contains a wireless transmitter that can actuate a remote audible siren. When used in a typical single level or multilevel dwelling, or in apartment buildings where adjacent apartments may have similar systems, it is possible that interference for another system could prohibit the remote siren from sounding in the event of an alarm. Never rely solely on the remote siren for notification of an alarm. Always make sure that the internal siren in the Smoke Detector can be heard from all bedrooms and living areas.

Specifications

Required batteries	CR123A- 3V lithium battery
Sensor	Photoelectric
Audible alarm	Over 85dB at 3m temporal pattern
Sensitivity	Per UL217 and EN14604 standards
Dimensions	12cm diameter x 5.3cm depth
Operating environment	
Temperature	40 to 100°F (4.4 to 37.8°C)
Relative humidity	10 to 95% non-condensing

ETL Rating

The Smoke Detector conforms to UL 268.

FCC Part 15 Notice

This device complies with part 15 of the FCC Rules. Operation is subject to the following two conditions: (1) This device may not cause harmful interference, and (2) this device must accept any interference received, including interference that may cause undesired operation.

Warning: Changes or modifications to this unit not expressly approved by the party responsible for compliance could void the user's authority to operate the equipment.

NOTE: This equipment has been tested and found to comply with the limits for a Class B digital device, pursuant to Part 15 of the FCC Rules. These limits are designed to provide reasonable protection against harmful interference in a residential installation. This equipment generates, uses, and can radiate radio frequency energy and, if not installed and used in accordance with the instructions, may cause harmful interference to radio communications. However, there is no guarantee that interference will not occur in a particular installation. If this equipment does cause harmful interference to radio or television reception, which can be determined by turning the equipment off and on, the user is encouraged to try to correct the interference by one or more of the following measures:

- Reorient or relocate the receiving antenna.
- Increase the separation between the equipment and receiver.
- Connect the equipment into an outlet on a circuit different from that to which the receiver is connected.
- Consult the dealer or an experienced radio TV technician for help.

Customer support

For any questions regarding your Detector, please contact:

SimpliSafe, Inc
1035 Cambridge St, 18A
Cambridge, MA 02141
Email: customer-support@simplisafe.com
Website: www.simplisafe.com
Phone: 1-888-957-4675