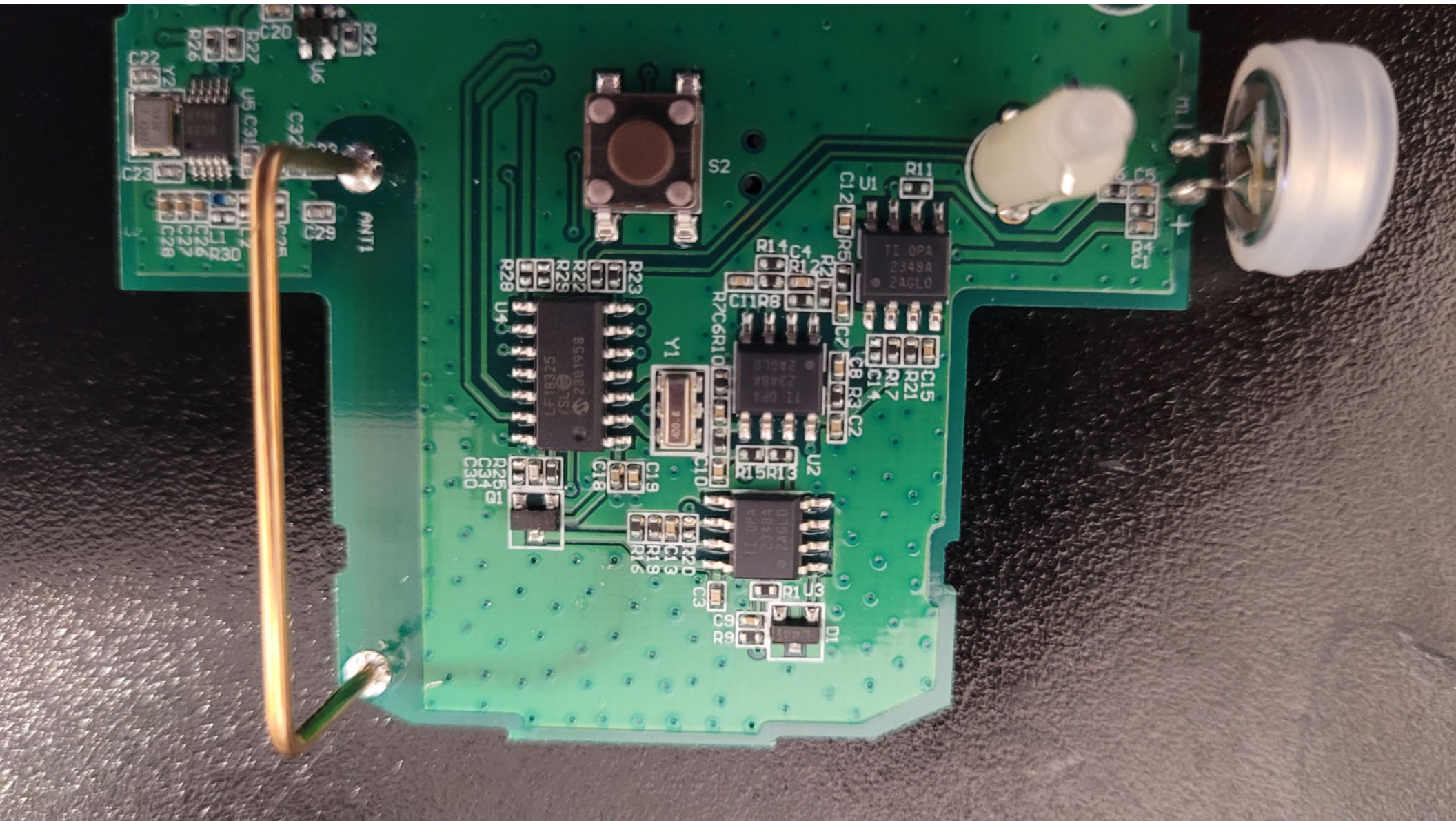
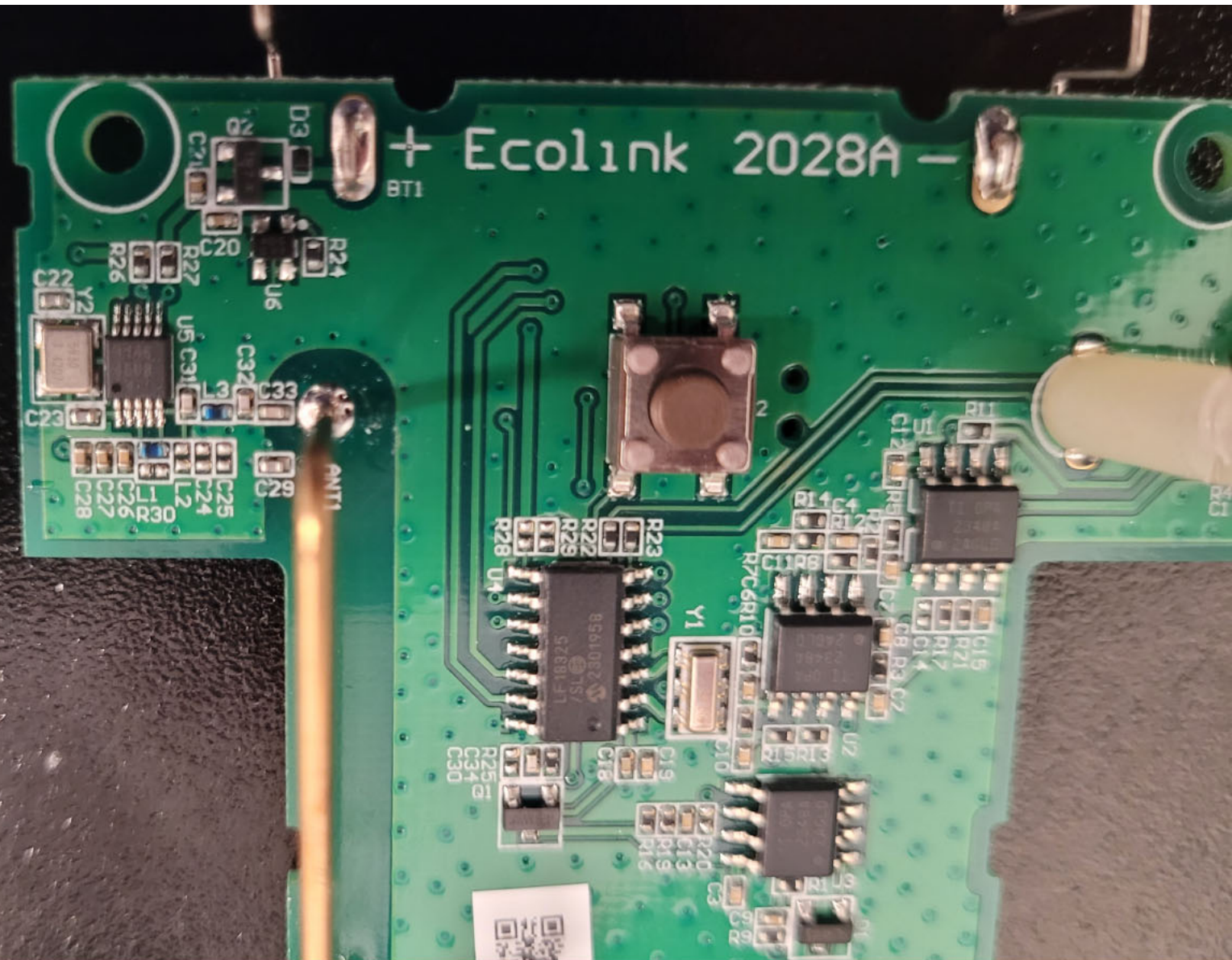


Top View of the PCB



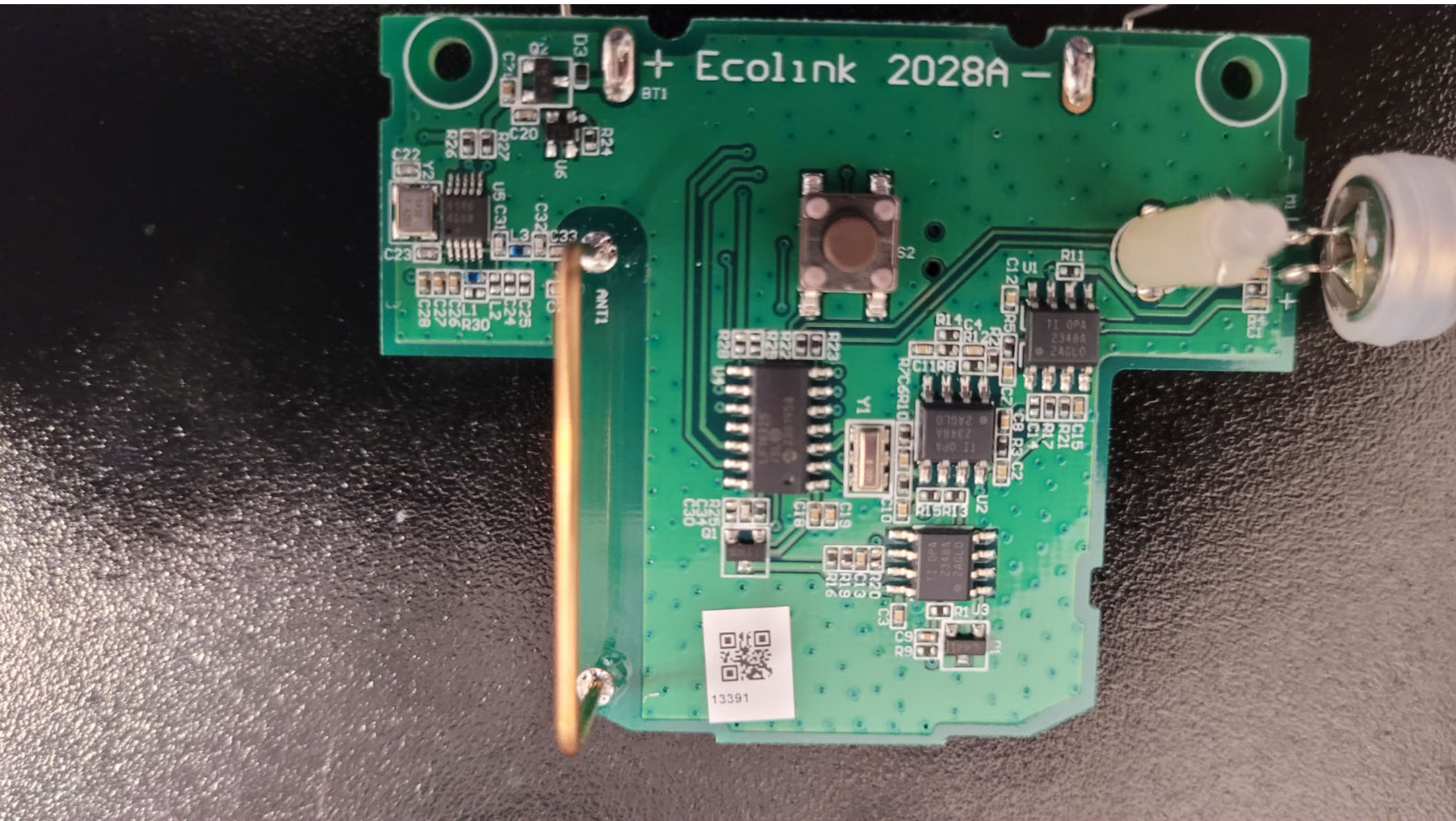
Top View of the PCB - Closeup View #1



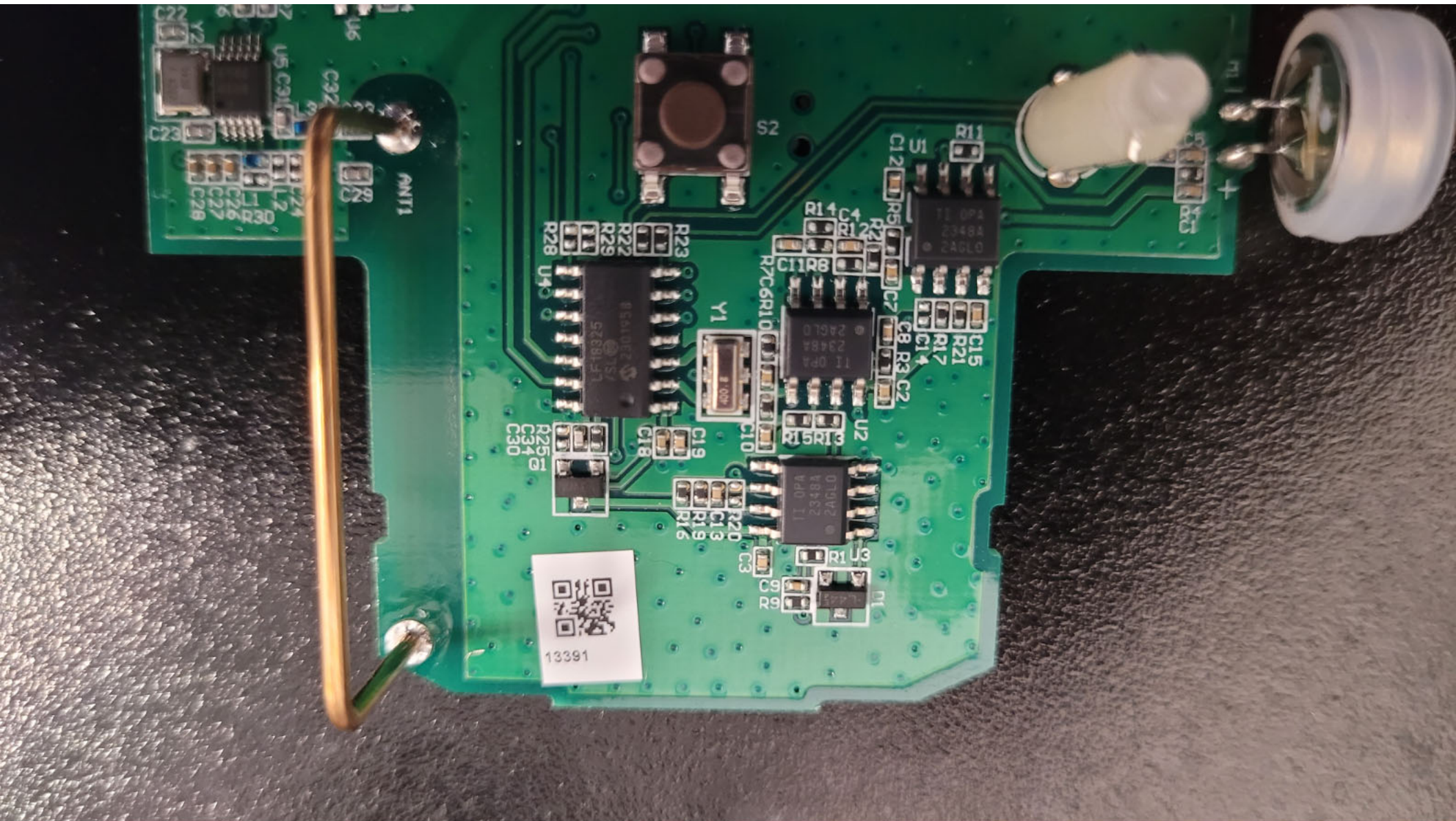
Top View of the PCB - Closeup View #2



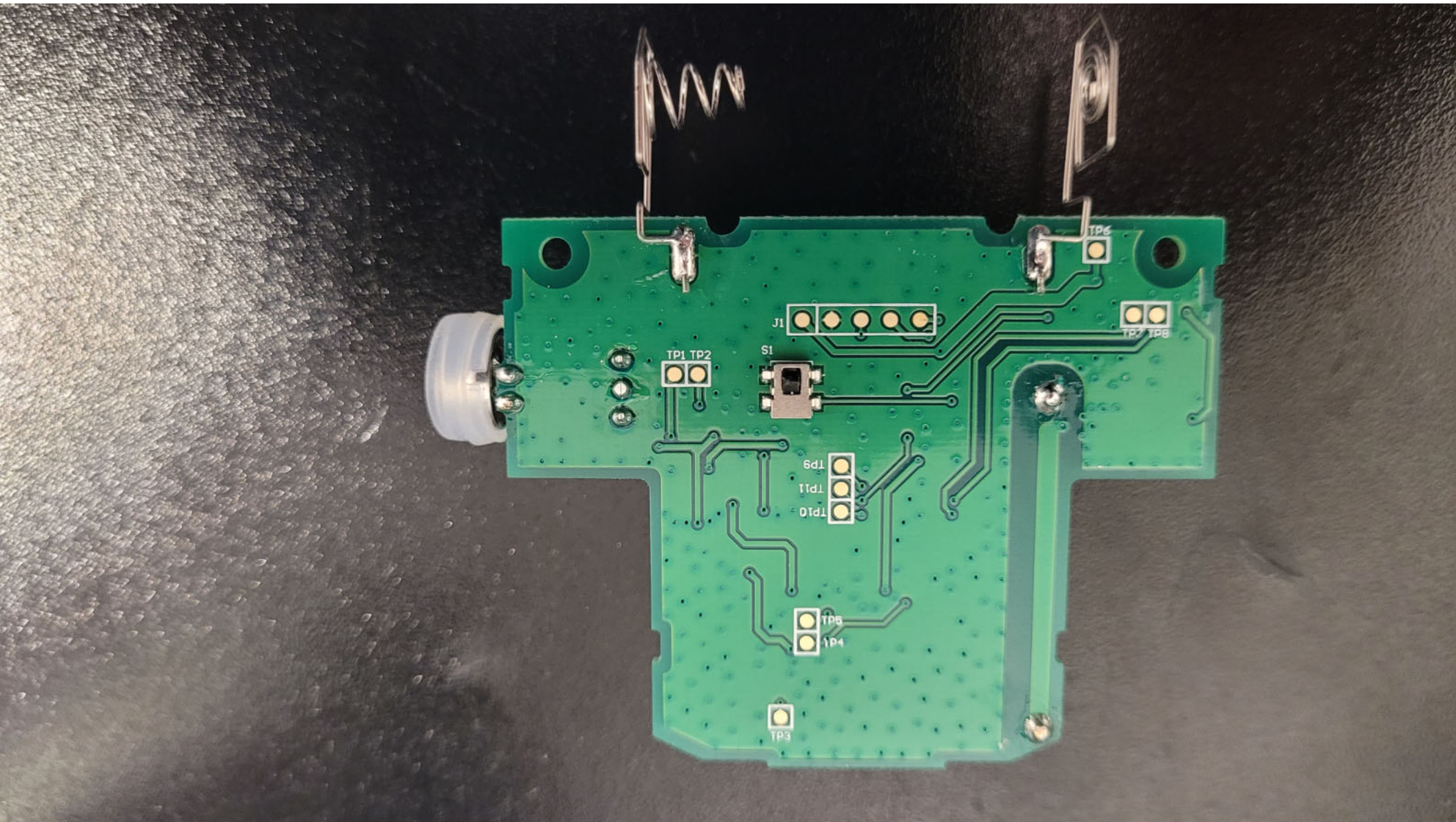
Top View of the PCB - Closeup View #3



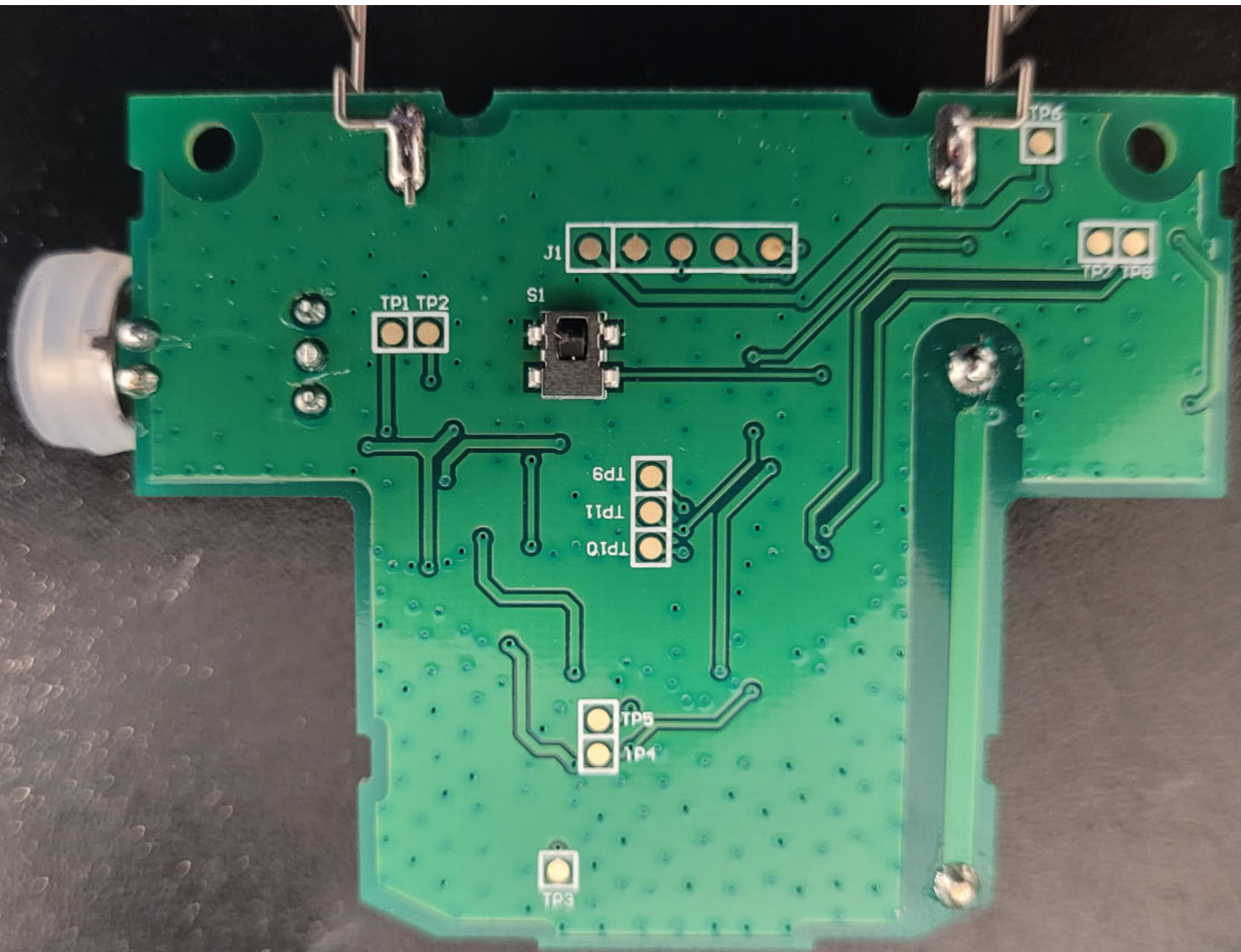
Top View of the PCB - Closeup View #4



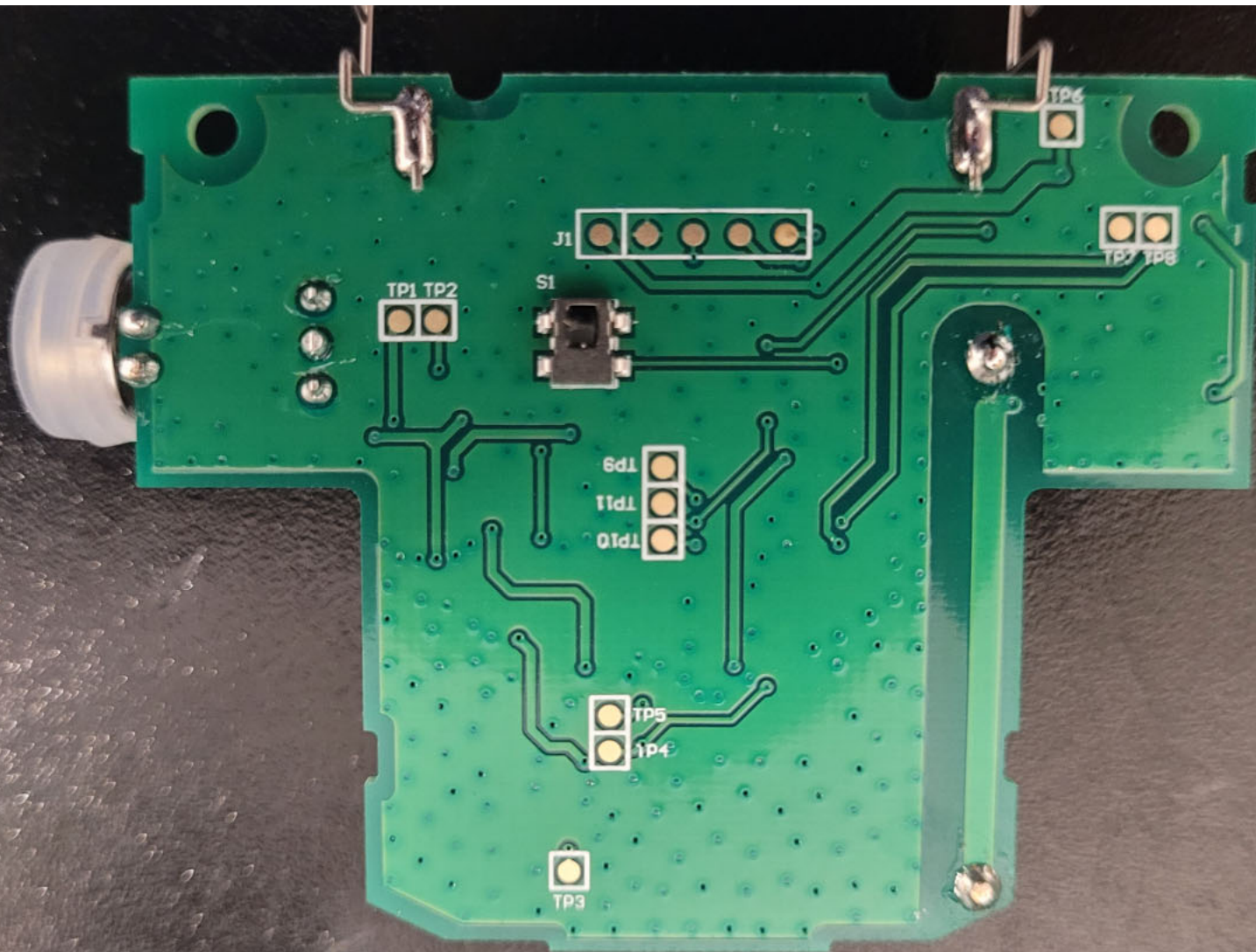
Top View of the PCB - Closeup View #5



Bottom View of the PCB



Bottom View of the PCB - Closeup #1



Bottom View of the PCB - Closeup #2