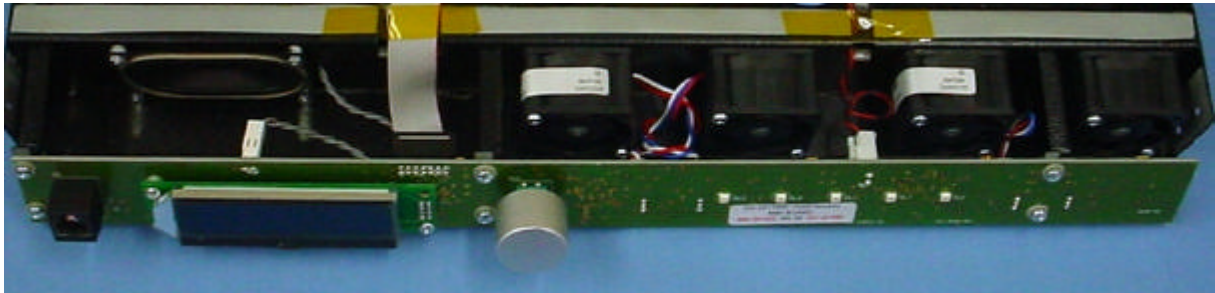


The image shows the internal components of a radio receiver. Two Rohde & Schwarz UMCO 137200 TV modules are visible, connected to a green PCB. The PCB contains various electronic components, including a large black circular component (likely a filter or inductor) and several integrated circuits. A white label on the left side of the PCB provides technical specifications, including the model number 137200, frequency range 137-138 MHz, and other parameters. The entire assembly is housed in a metal chassis with a silver-colored front panel.

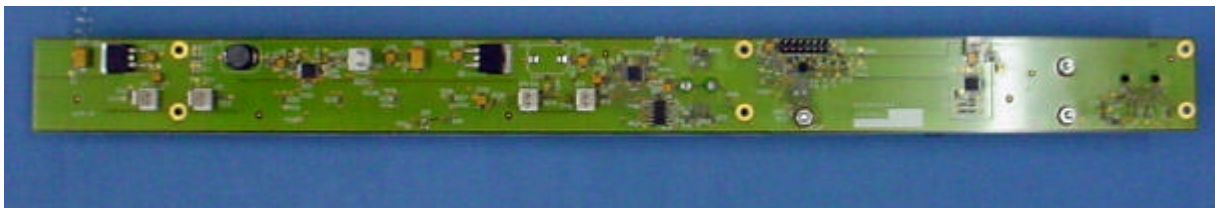
Front Panel PCB layout



Front panel PCB top view



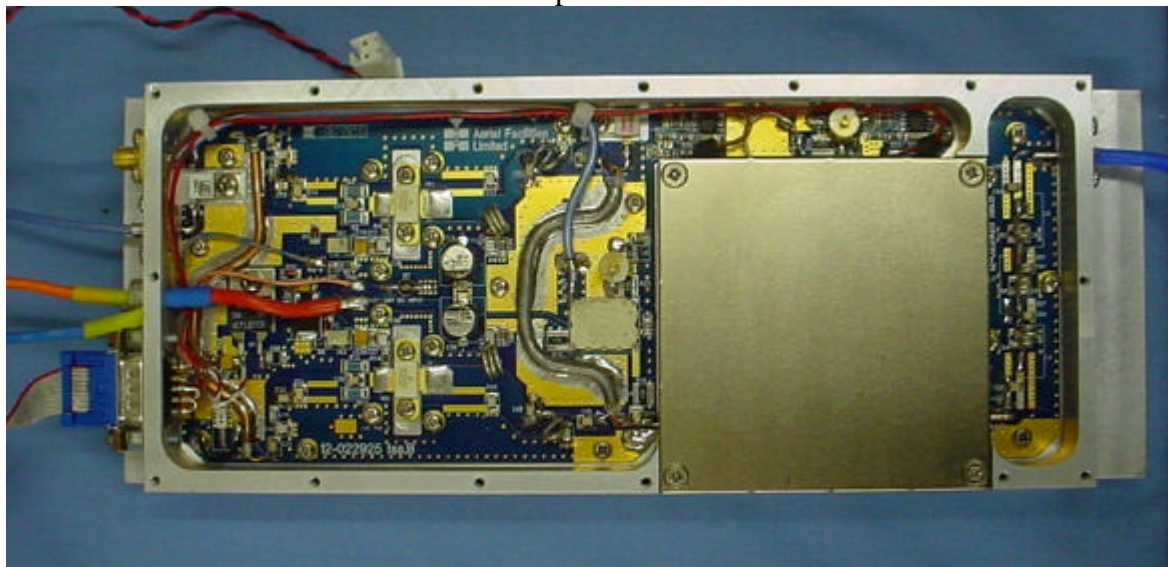
Front panel PCB bottom view



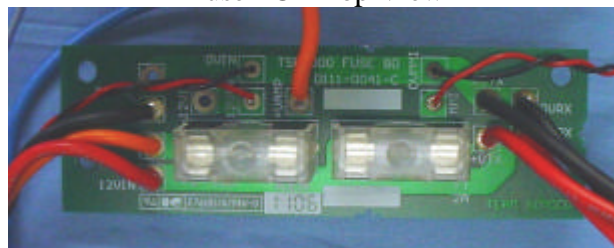
100 Watt Amplifier Top View



100Watt Amplifier PCB View



Fuse PCB Top View

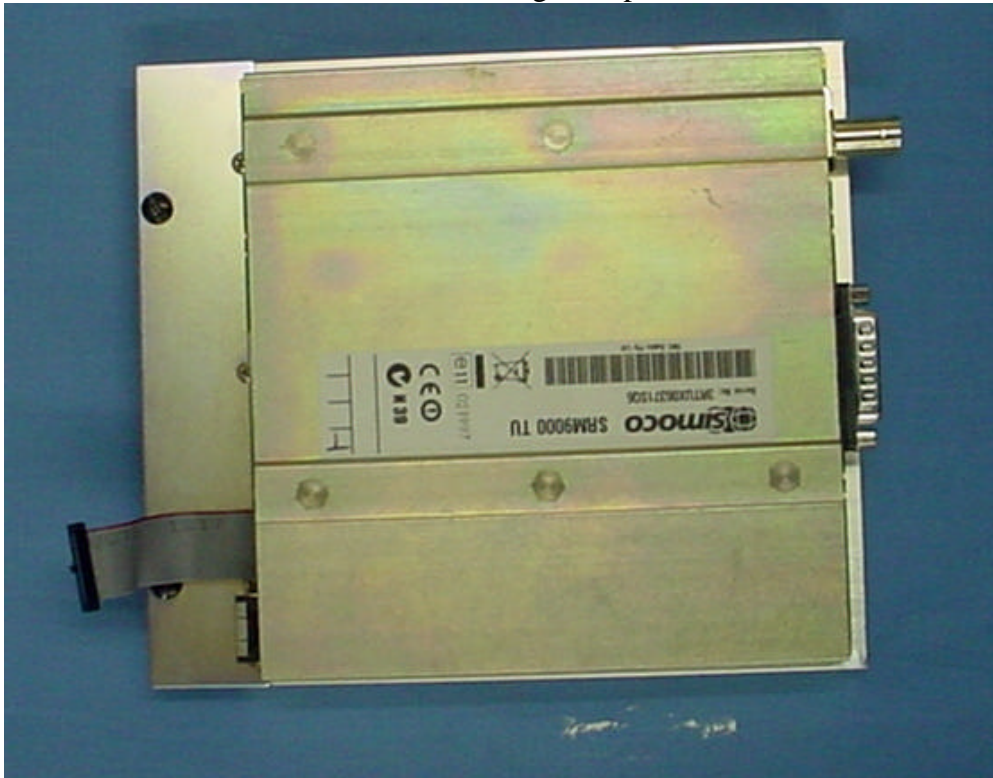


Fuse PCB Bottom View

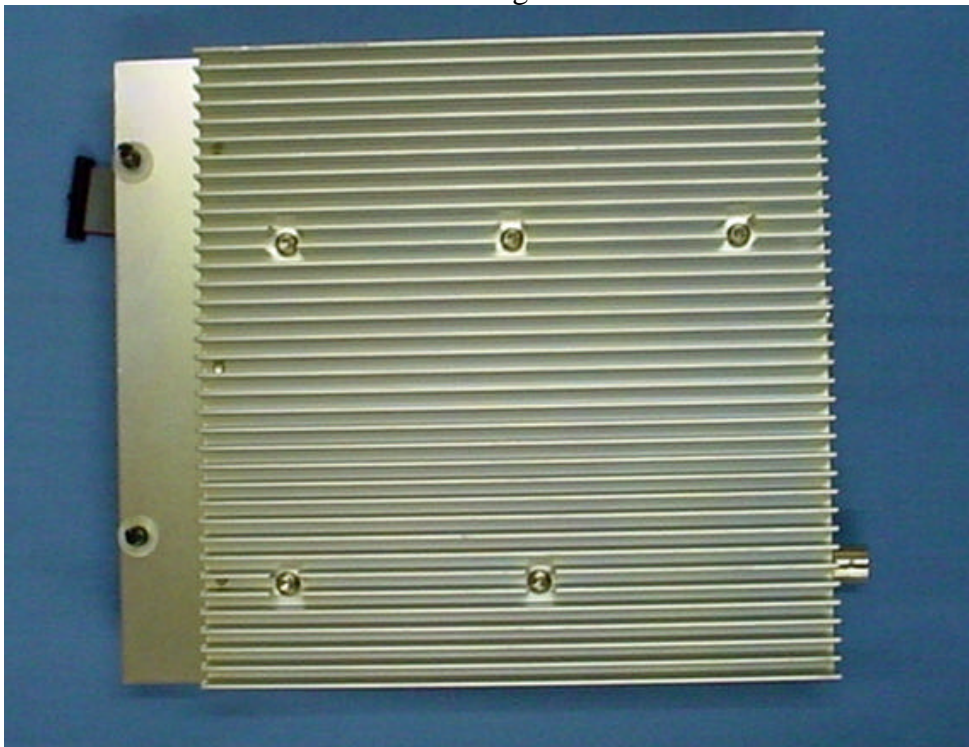




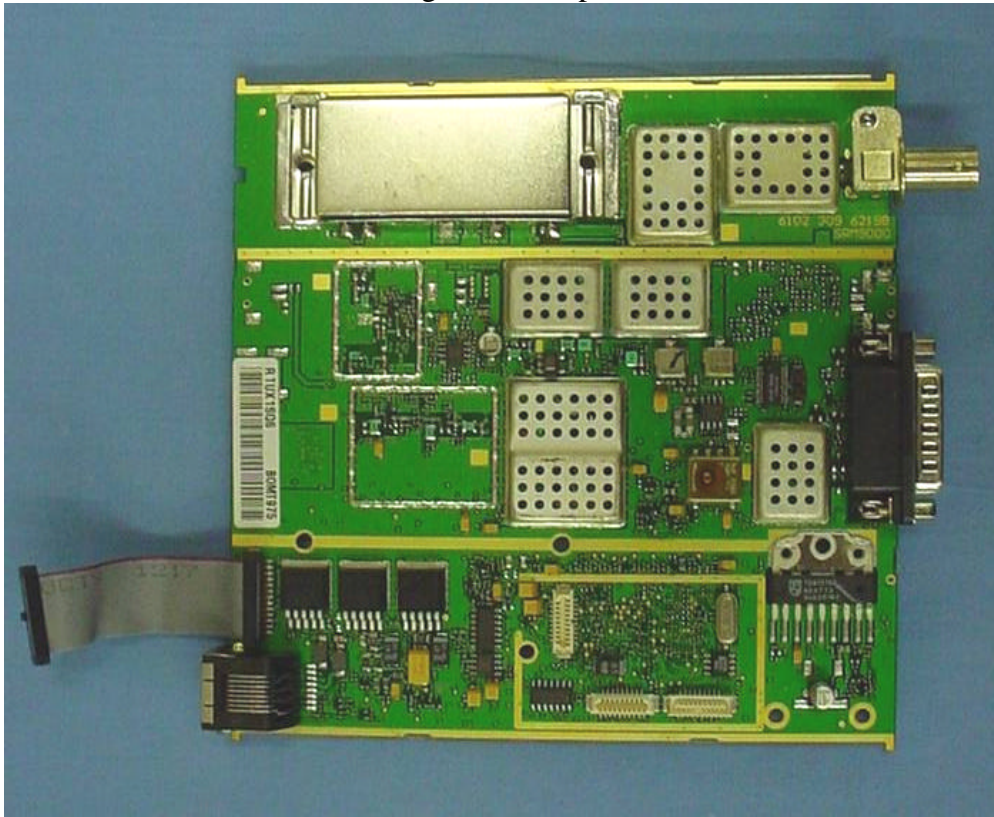
RX Engine Top View



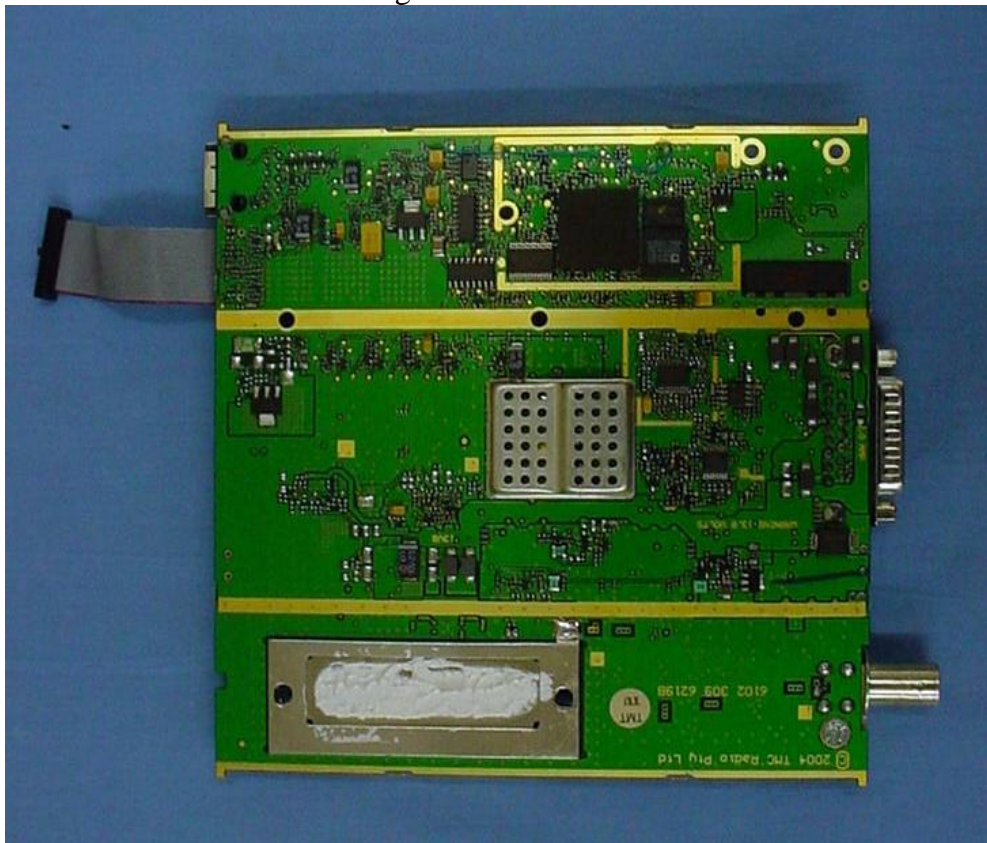
RX Engine Bottom View



RX Engine PCB Top View

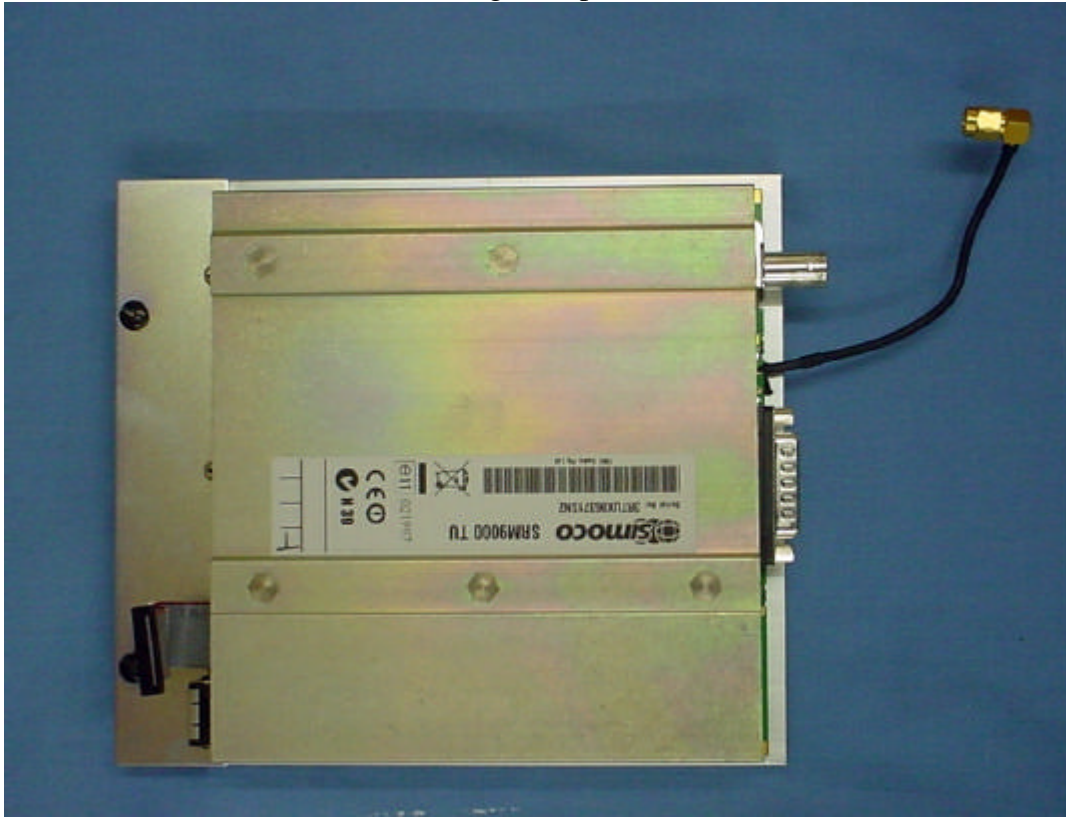


Rx Engine PCB Bottom View

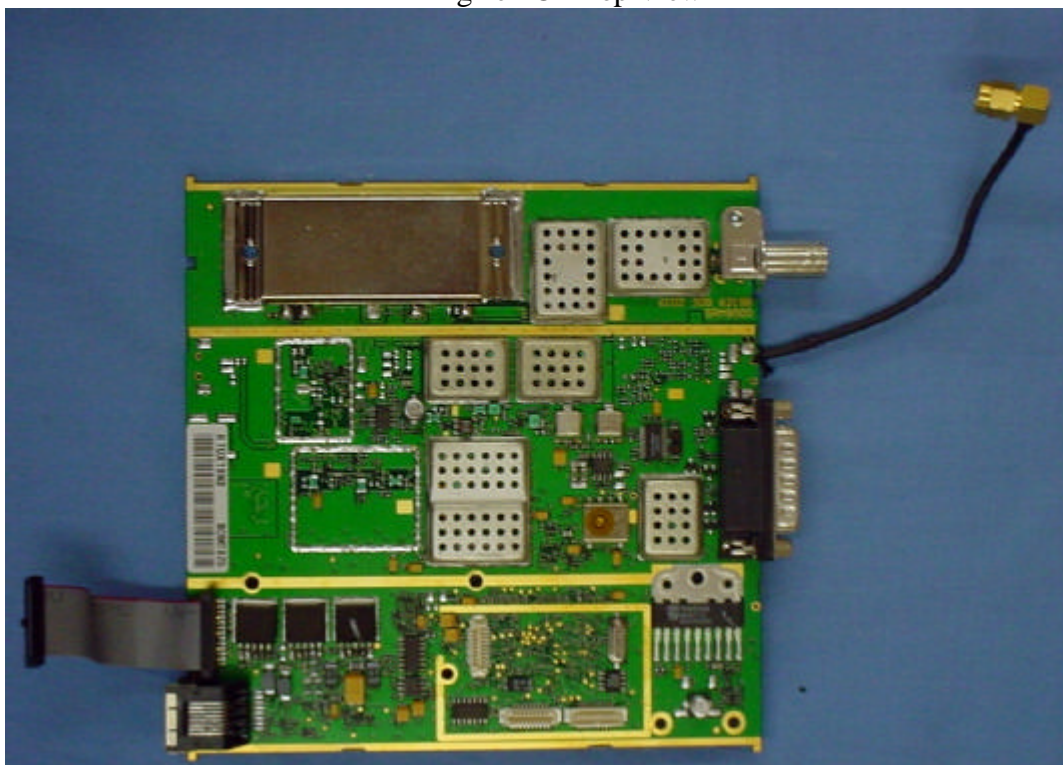




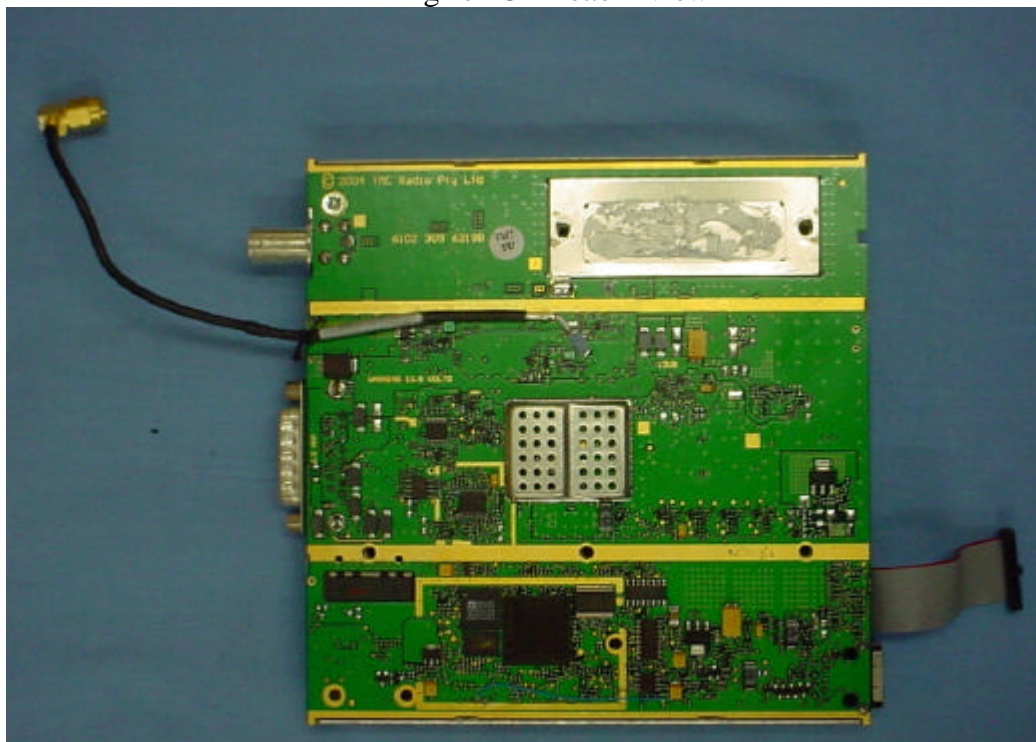
TX Engine Top View



TX Engine PCB Top View



TX Engine PCB Bottom View



Control Board Top View



Control Board Bottom View

