

---

August 24, 2007  
Federal Communications Commission  
Equipment Approval Services  
7435 Oakland Mills Road  
Columbia, MD 21046

**APPLICANT : GSteletech Co., Ltd.**  
**FCC ID: U88GSTR-815DC-SPR**

Gentlemen:

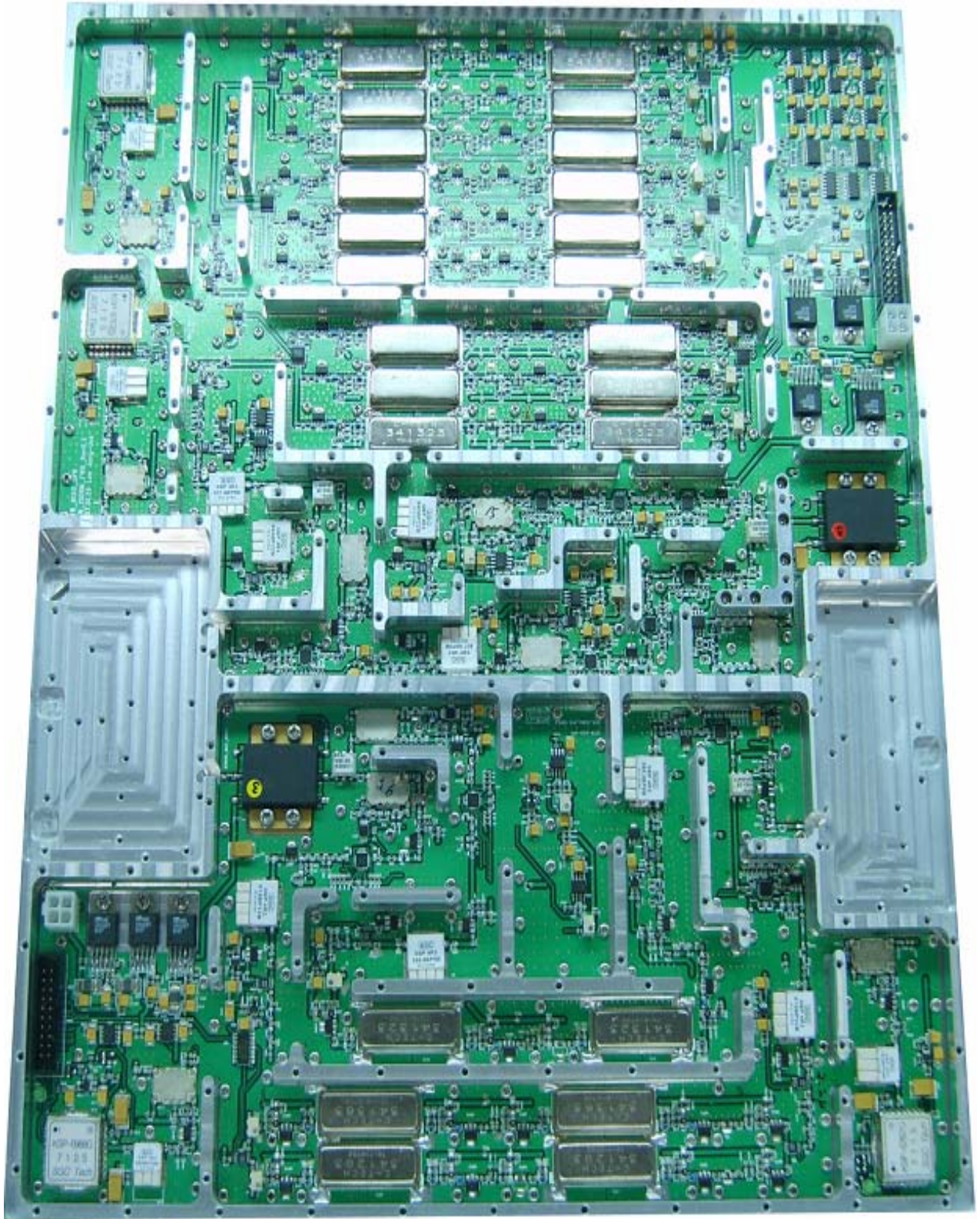
Transmitted herewith, on behalf of GSteletech Co., Ltd. is an application for a Class II Permissive Change Certification of the following iDEN In-Building RF Repeater

**FCC ID : U88GSTR-815DC-SPR**  
**MODEL : GSTR-815DC-SPR**  
**TYPE : iDEN In-Building RF Repeater**

The device is identical to the previously certified iDEN In-Building RF Repeater except for the following:

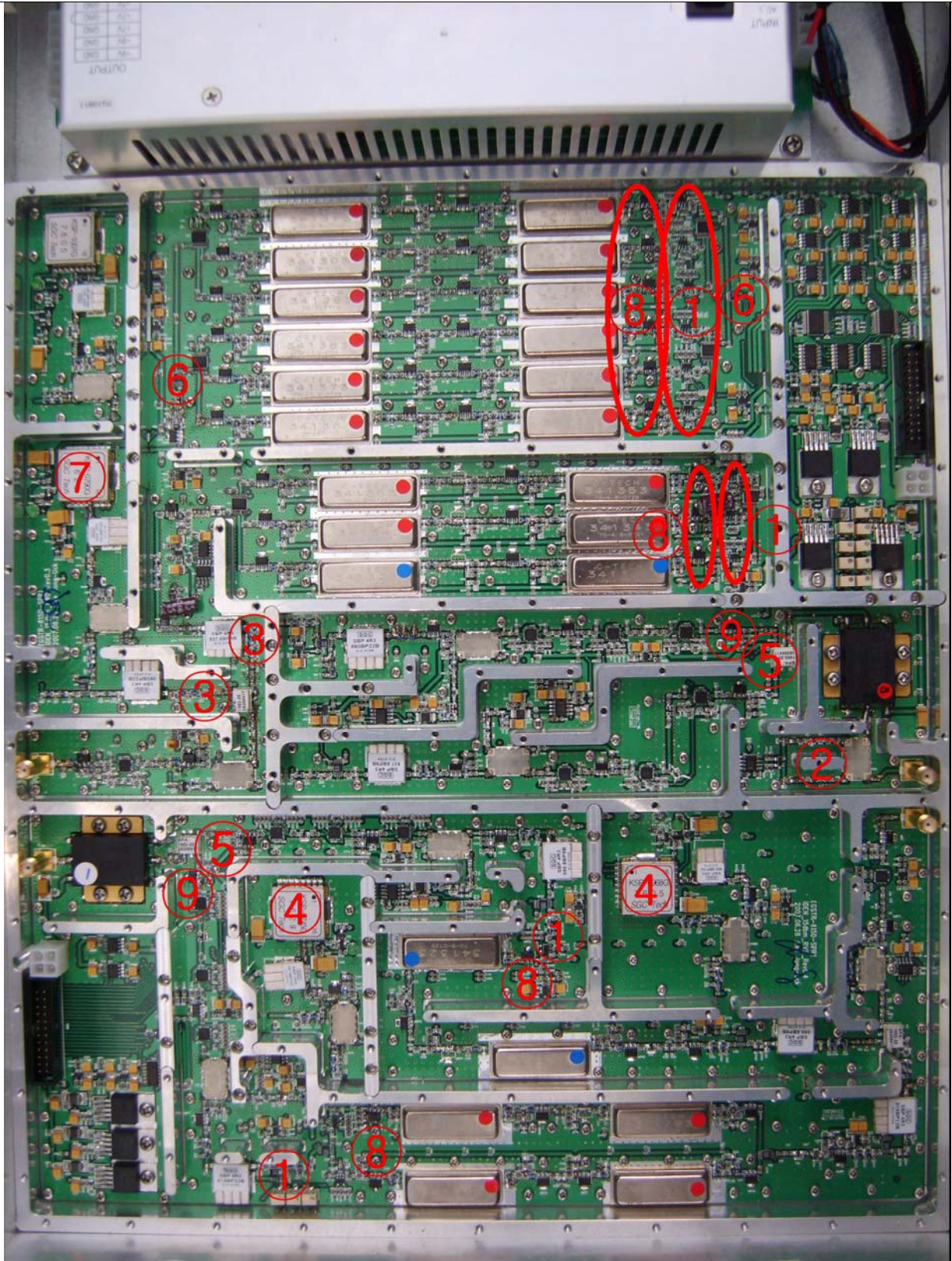
1. Alternate Stand

- ① Changed with Analog Attenuator and VR(Variable Resistance)
- ② Changed PAD(3 resistors which are formed like phi to control the power) with VR(Variable Resistance)
- ③ Changed LPF509 with LC FILTER.
- ④ Changed PLL and added PAD.
- ⑤ Added PAD on the forepart of the PAM
- ⑥ Separate the power supply of Mixer and add a regulator (NJM2882F05)
- ⑦ Add a partition of PLL
- ⑧ Changed Amplifier with PW570
- ⑨ Changed Amplifier with PW410



(Before changed)





(After changed)

**HYUNDAI CALIBRATION & CERTIFICATION TECHNOLOGIES CO., LTD.**

SAN 136-1, AMI-RI, BUBAL-EUP, ICHEON-SI, KYOUNGKI-DO, 467-701, KOREA

TEL:+82 31 639 8517

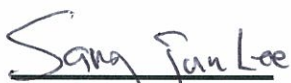
FAX:+82 31 639 8525

www.hct.co.kr

---

Attached are the applicant's Cover Letter, Schematic Diagram, Part List, Manual and Test Report.

Should you have any questions or comments concerning the above, please contact the undersigned.



SANG JUN LEE

**Manager of RF Part**



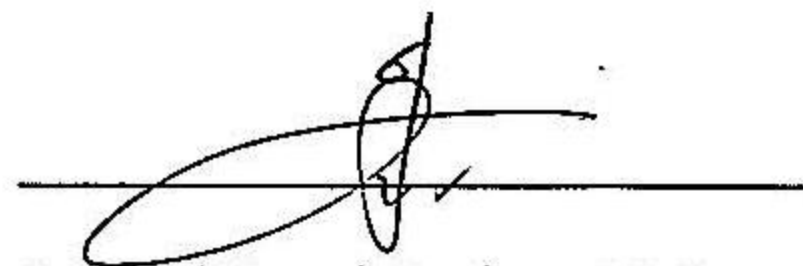
---

**We, GSteletech Co., Ltd, announce that all modifications will be incorporated into each unit sold in the U.S.**

- ① Changed with Analog Attenuator and VR(Variable Resistance)
- ② Changed PAD(3 resistors which are formed like phi to control the power) with VR(Variable Resistance)
- ③ Changed LPF509 with LC FILTER.
- ④ Changed PLL and added PAD.
- ⑤ Added PAD on the forepart of the PAM
- ⑥ Separate the power supply of Mixer and add a regulator (NJM2882F05)
- ⑦ Add a partition of PLL
- ⑧ Changed Amplifier with PW570
- ⑨ Changed Amplifier with PW410

**(Please refer to the pages above)**

**GSteletech Co., Ltd.**



**Assistant Manager  
Jong-Il Lee / 2007. 08. 24**