

Appendix 2 Photodocumentation

Description: case opened view #1


Division Medical Technology/
Communication Technology/
EMC

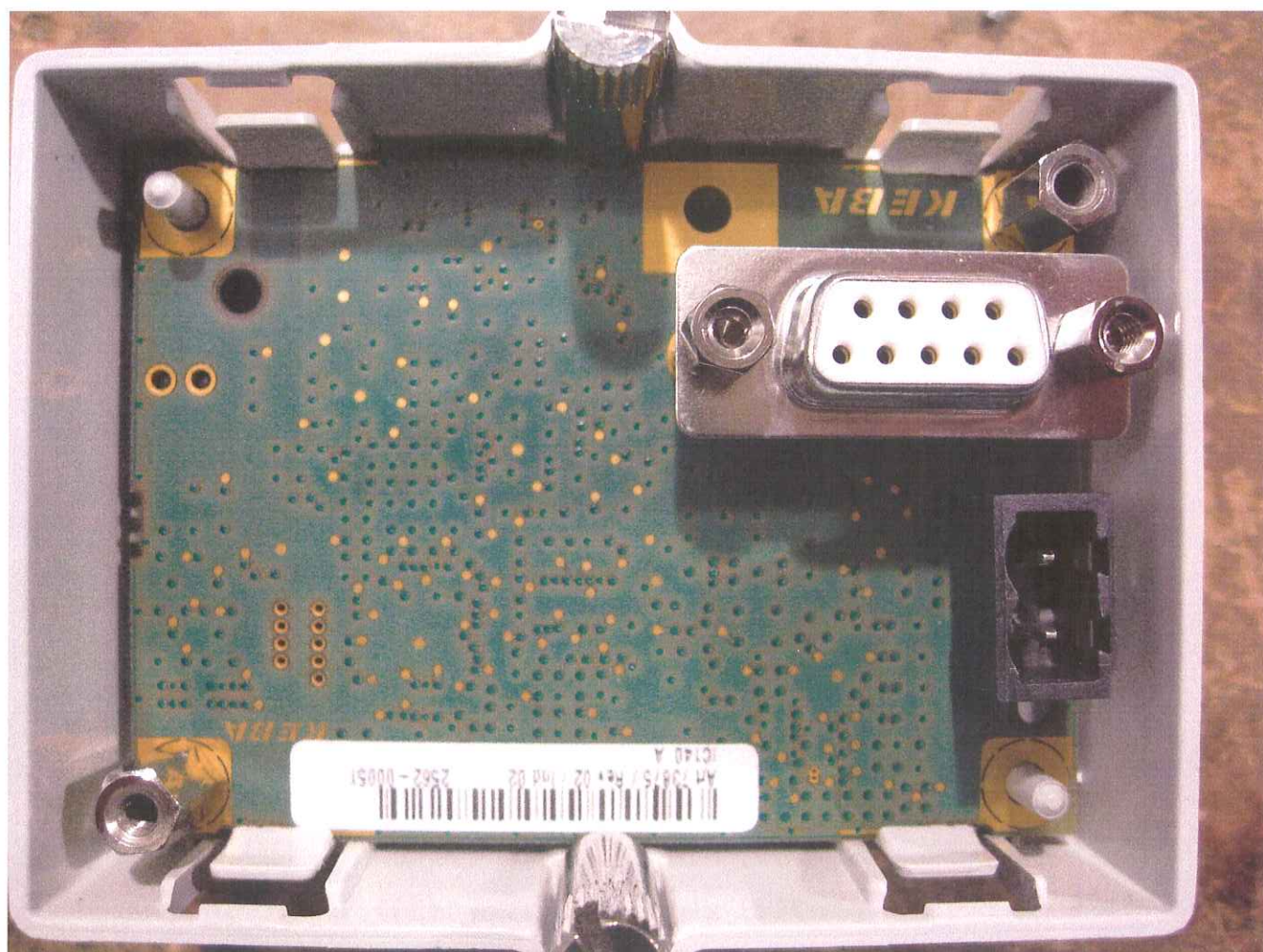
Department: EMC

Test report reference:
M/EMV-08/141

Page: 3 of 7

Date: 11.04.2008

checked by: 



Appendix 2 Photodocumentation

Description: case opened view #2

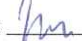
Division Medical Technology/
Communication Technology/
EMC

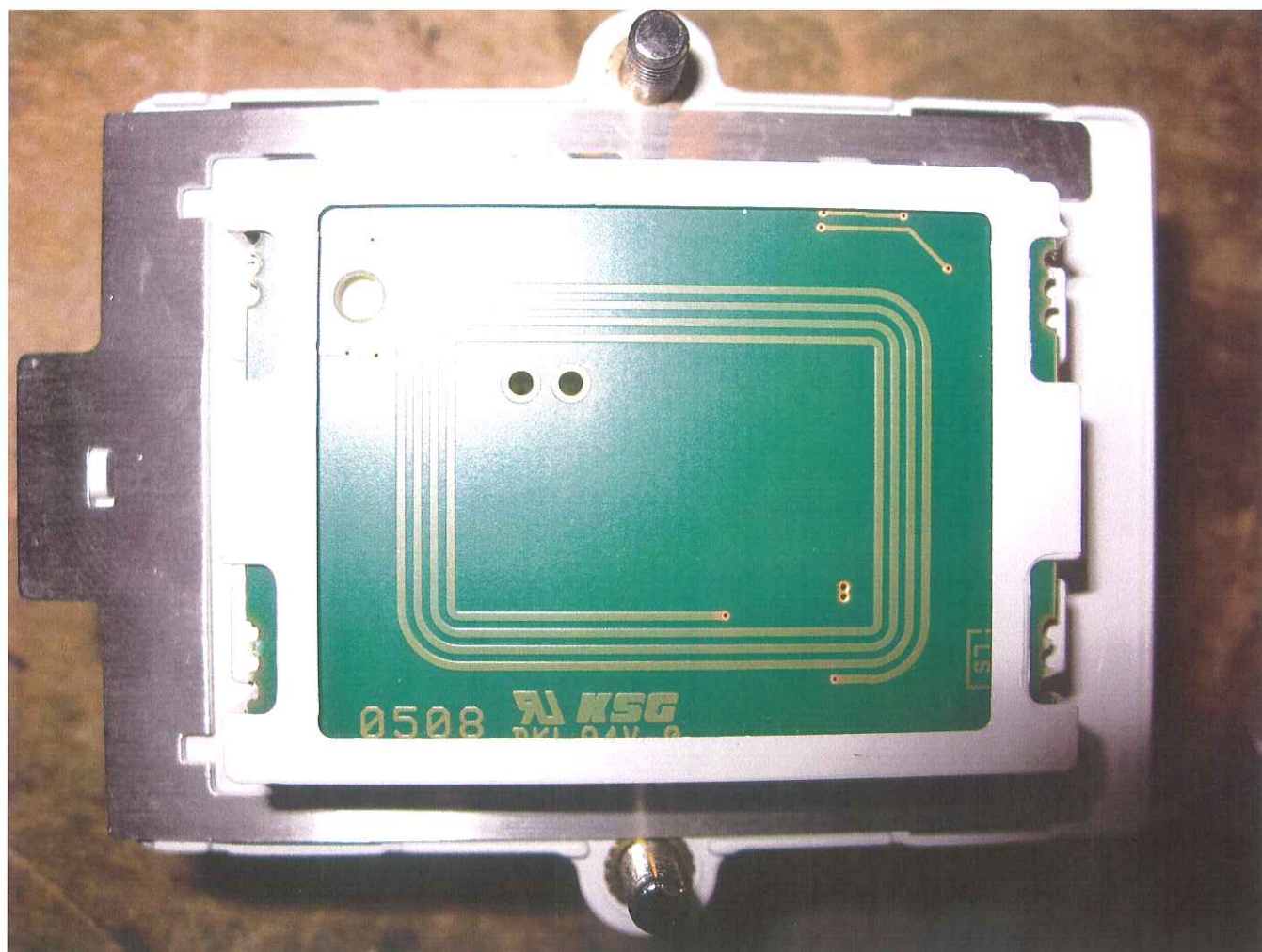
Department: EMC

Test report reference:
M/EMV-08/141

Page: 4 of 7

Date: 11.04.2008

checked by: 



Appendix 2 Photodocumentation

Description: component side

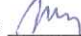
Division Medical Technology/
Communication Technology/
EMC

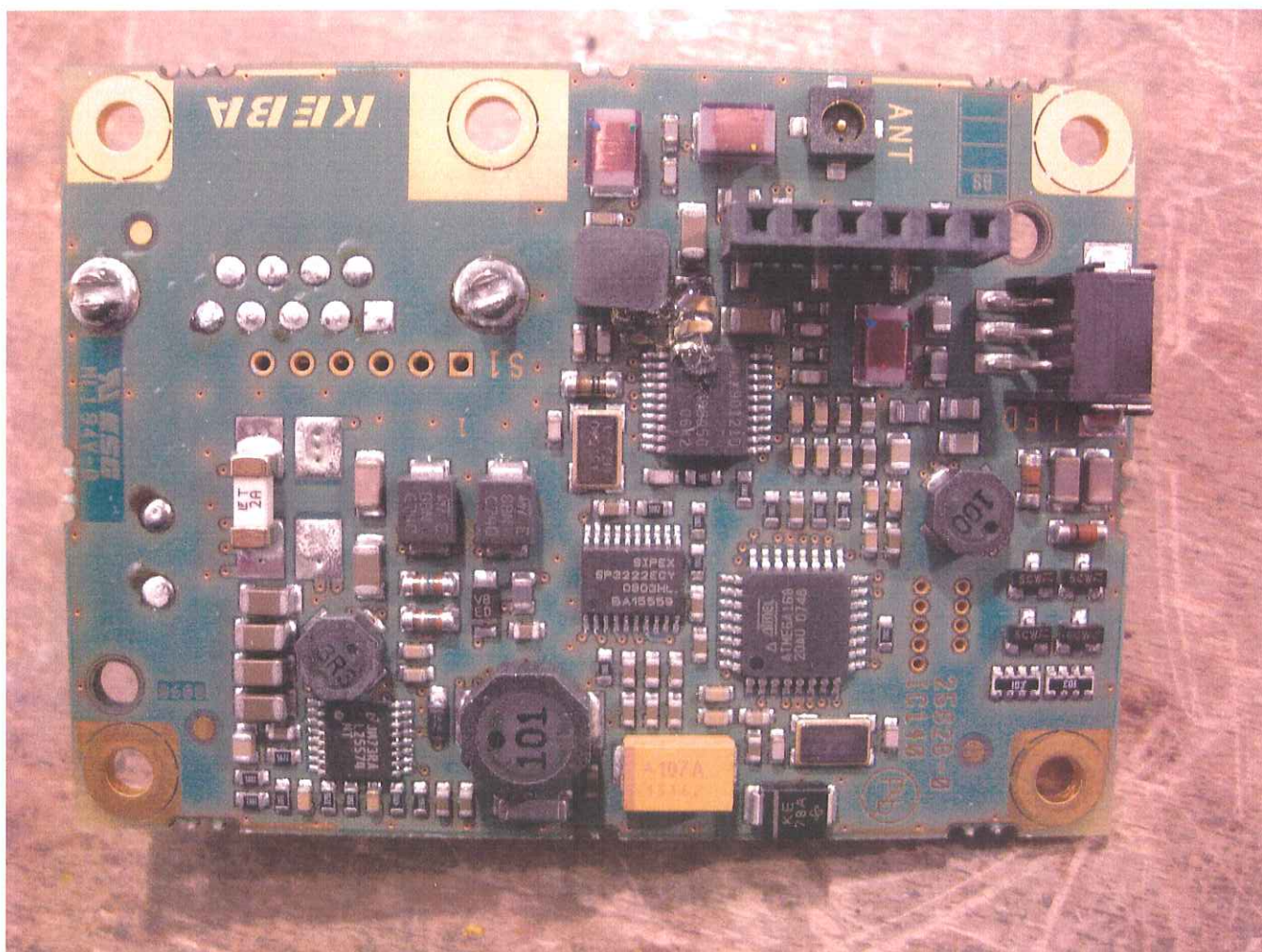
Department: EMC

Test report reference:
M/EMV-08/141

Page: 5 of 7

Date: 11.04.2008

checked by: 



Appendix 2 Photodocumentation

Description: solder side

Division Medical Technology/
Communication Technology/
EMC

Department: EMC

Test report reference:
M/EMV-08/141

Page: 6 of 7

Date: 11.04.2008

checked by: *Jm*

