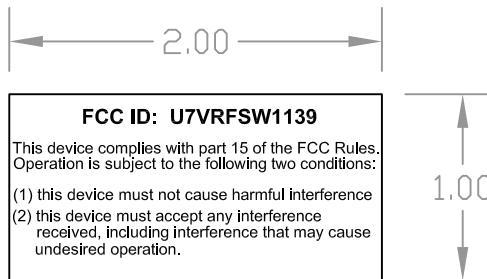


REVISIONS

REV.	DESCRIPTION	DATE	APPROVED
------	-------------	------	----------

NOTES:

1. TEXT FONT: ARIAL
2. LABEL MATERIAL: BRADY PART NUMBER THT-17-428-3
3. PRINTER RIBBON: BRADY PART NUMBER 4302.
4. PRINTER: BRADY 300MVP PLUS.



PROPRIETARY NOTICE

Copyright 2005 RF Trax Incorporated; All Rights Reserved
 This document and the information contained herein is the property of RF Trax Incorporated. Any use, disclosure, copying, display, reproduction or dissemination of any part of this document and/or the information contained herein without the prior written authorization of RF Trax Incorporated is prohibited.

UNLESS OTHERWISE SPECIFIED
 DIMENSIONS ARE IN INCHES
 TOLERANCES ARE:
 FRACTIONS DECIMALS ANGLES
 $\pm 1/16$.XX \pm .01 $\pm 1^\circ$
 .XXX \pm .005

MATERIAL:
 SEE NOTE 2

SURFACE FINISH: 63 \sqrt

FINISH:

DRAWN

J.EVERETTE

7/08

APPROVALS

DATE

DRAFTING

DESIGNER

MANUFACTURING



DWG TITLE:

LABEL, FCC TRANSMITTER UNIT

SIZE DWG NO

A

410.0040.0001

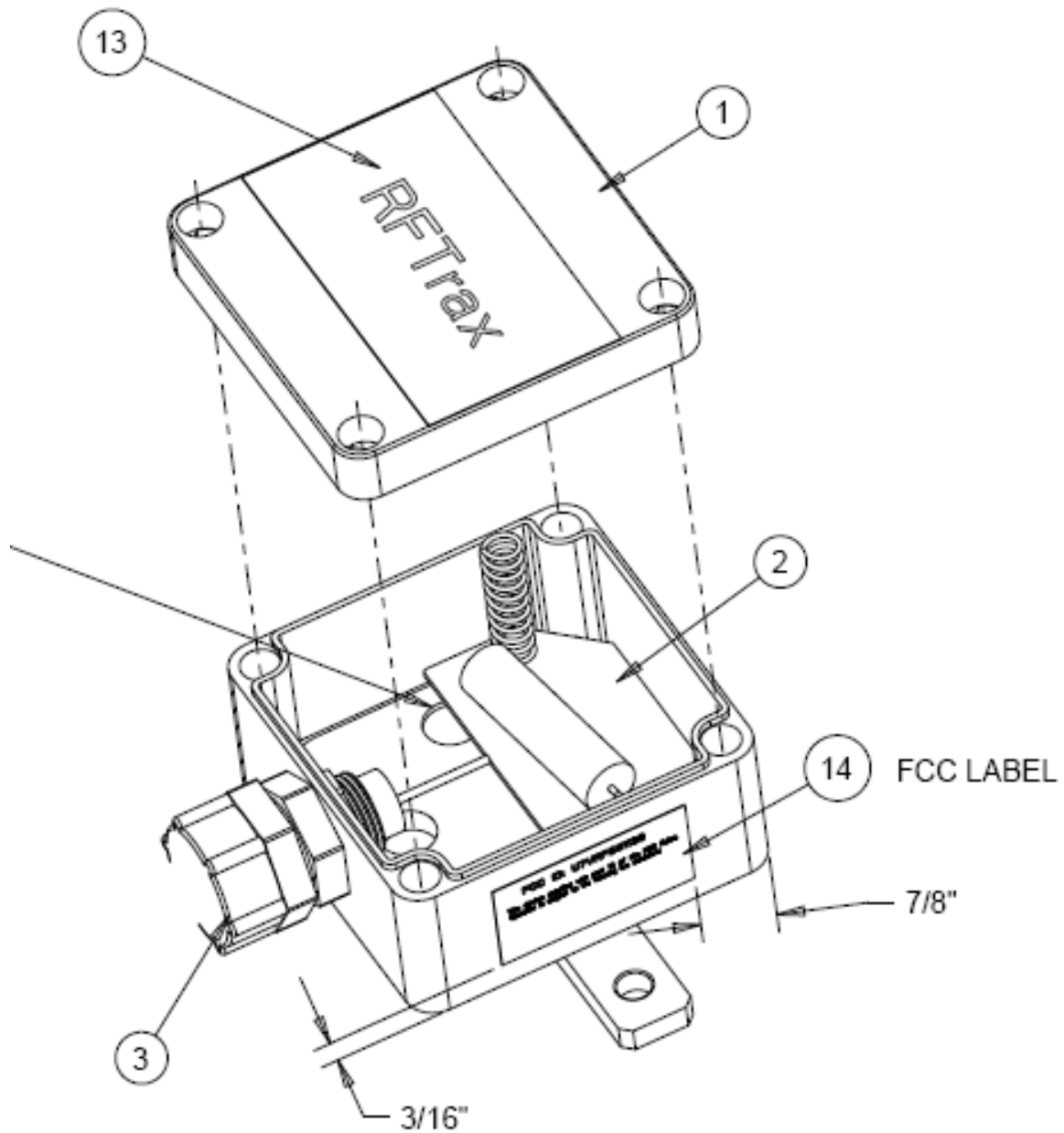
REV

—

SCALE FULL

DO NOT SCALE DRAWING

SHEET 1 OF 1



SKETCH OF THE LOCATION OF FCC LABEL ON RF SWITCH TRANSMITTER