

OPERATING INSTRUCTIONS

BATTERY INFORMATION

The operation requires 6 "AA" 1.5V alkaline batteries (not included) for car and one 9V battery (included) for remote control.

- Carefully remove items from package.
- Locate the battery compartment on the back of each item.
- Unscrew latch on bottom of car to release battery pack and replace batteries following the correct polarities (Fig.1).
- Replace the battery compartment door.
- Slide open the battery compartment door of the controller.
- Insert the 9V battery following the correct polarities (Fig.2).
- Replace the battery compartment door.

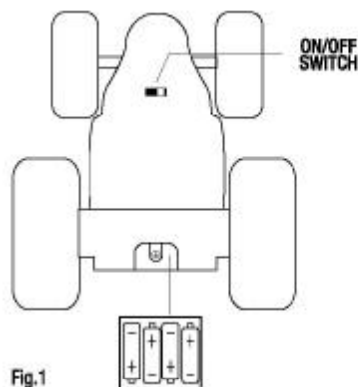


Fig.1

BATTERY PACK
USES 6 "AA"
BATTERIES
(NOT INCLUDED)

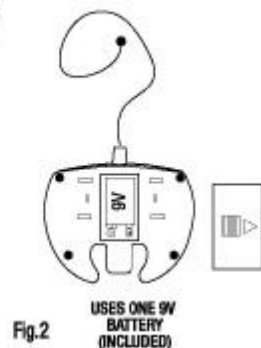


Fig.2

(RECOMMEND USING ALKALINE
BATTERIES FOR BEST PERFORMANCE)

SAFETY PRECAUTIONS

- Do not operate during thunderstorms or rain.
- Avoid water, sand and snow when operating your car.
- Do not submerge car or controller in water.
- Never operate your car on the street or highway.
- Adult supervision is recommended when operating this car.
- Remove all batteries when not in use to avoid accidental operation.
- Never operate your car in a confined or crowded area, and do not use people or animals as obstacles.
- Do not run your car into furniture, objects or hard surfaces, as this will cause damage to both the objects and the car.
- Keep fingers, hair and loose clothing away from the tires, gears and motor while the car is switched to "ON".
- Do not leave car or transmitter near sources of heat or under direct sunlight for long periods of time.
- Do not leave car or transmitter outside overnight. Dampness is harmful to interior components.

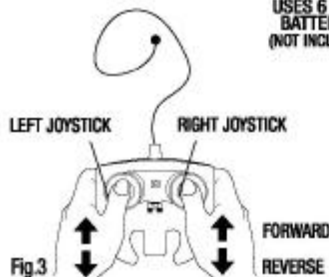


Fig.3

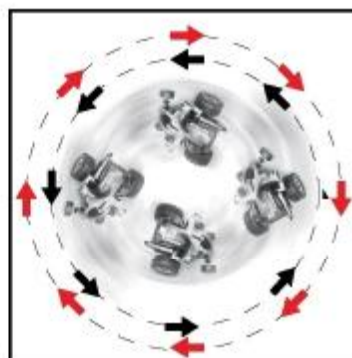


Fig.4

PERFORMING STUNTS

- Switch both car and the controller buttons to "ON" position.
- Use the left joy stick to make the left wheel move forward and reverse.
- Use the right joy stick to make the right wheel move forward and reverse (Fig.3).

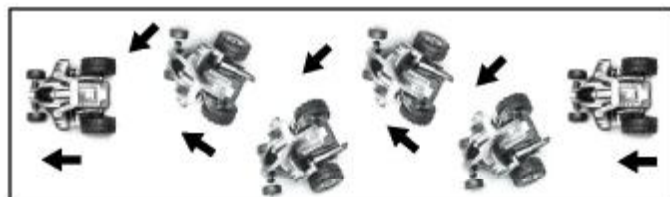


Fig.5

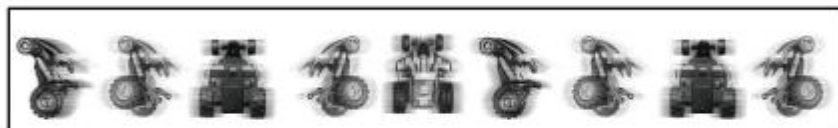


Fig.6



Fig.7

1. SPECTACULAR SPINS.

To spin the Street Savage 360°, run the car and push up the RIGHT joystick and simultaneously push down the LEFT joystick or push up the RIGHT joystick and simultaneously push down the LEFT joystick depending on the chosen spin direction (Fig.4).

2. AWESOME CORNERING

To take extremely sharp turns or maneuver a 180° or 360° turn, run the car and push the RIGHT and the LEFT joystick then release the RIGHT or the LEFT joystick to steer left or right (Fig.5).

3. WILD WHEELIE

To make a wheelie, run the car and push BOTH joysticks forward. The car will stand up on two wheels. Release slowly the RIGHT or the LEFT joystick to steer (Fig.6).

4. TWO WHEEL SPINS

To make a two wheel spin, run the car at full speed to make a wheelie and then suddenly release the RIGHT or the LEFT joystick to spin on two wheels (Fig.7).

BATTERY WARNING:

- Do not mix alkaline, standard (carbon-zinc) and rechargeable batteries (Nickel Metal Hydride).
- Do not mix old and new batteries.
- Non-rechargeable batteries are not to be recharged.
- Rechargeable batteries are to be removed from the item before being charged (if removable).
- Rechargeable batteries are only to be charged under adult supervision (if removable).
- Exhausted batteries should be removed immediately and must be recycled or disposed of properly according to state or local government ordinances and regulations.
- The supply terminals are not to be short-circuited.
- Only batteries of the same or equivalent type as recommended are to be used.
- Batteries are to be inserted with the correct polarity (see Fig.1 and Fig.2 above).
- Do not dispose batteries in a fire - batteries may leak or explode.

orm Spins, Jumps, Tire Wheelies
Other Extreme Stunts
Function Wireless
ote Control
g-Loaded Shocks and
by Tires for All-Terrain
ng Action
able in 2 Frequencies
ompetitive Racing



Changes or modifications not expressly approved by the party responsible for compliance could void the user's authority to operate the equipment

NOTE:

This equipment has been tested and found to comply with the limits for a Class B digital device, pursuant to Part 15 of the FCC Rules. These limits are designed to provide reasonable protection against harmful interference to a co-channel station. This equipment generates, uses, and can radiate radio frequency energy and, if not properly used, it may cause harmful interference to radio communications.

However, there is no guarantee that interference will not occur in a particular situation. If this equipment does cause harmful interference to you or others, you may need to take certain steps to correct the interference by one or more of the following measures:

- ☐ Reorient or relocate the receiving antenna.
- ☐ Increase the separation between the equipment and receiver.
- ☐ Connect the equipment into a different outlet.
- ☐ Consult the dealer or an experienced radio/TV technician for help.

4974 (15173)



4 2 0 2 3 0 4 5 6 3

Made in China

"BLUE HAT", "BLUE HAT TOY COMPANY" and the BLUE HAT LOGOS and other indicia of origin are trademarks of MerchSource, LLC. All logos, text and graphics are also the subject of copyright © 2009 of MerchSource, LLC. All rights reserved.

©2009 MerchSource, LLC. All Rights Reserved.

Distributed by MerchSource, LLC, Foothill Ranch, CA 92610.

The artwork and design of this package are protected by US copyright law and may not be reproduced, distributed, displayed, published or used for any purpose without prior written permission. It is not permitted to alter, remove or reproduce any trademarks or copyright notice from this package.

Take radio control racing to the next level with the STREET SAVAGE™ Stunt Vehicle. Turn, tumble, spin round and round. The STREET SAVAGE™ delivers stunt and racing action unlike any other radio control vehicle.

With its full-function remote control, you can easily perform outrageous one-wheel turns, super wheelies and more! STREET SAVAGE™ features super-grip knobby tires and spring-loaded shocks making it the ultimate all-terrain vehicle. Available in 2 frequencies, you can go head-to-head with family and friends for challenging stunts and races. STREET SAVAGE™ is ferocious fun for everyone!