

Component Maintenance Manual with Illustrated Parts List

NOSE LANDING GEAR (NLG) AXLE REMOTE DATA CONCENTRATOR
(ARDC)

PART NUMBERS:

HYDRO-AIRE, INC.
142-145-01

GE AVIATION SYSTEMS LLC
2-8359-1

THE BOEING CO.
S683Z001-31

CRANE AEROSPACE & ELECTRONICS, HYDRO-AIRE, INC.

PROPRIETARY DATA: THE INFORMATION CONTAINED IN THIS DOCUMENT IS THE PROPRIETARY INFORMATION OF GE AVIATION SYSTEMS LLC OR CRANE AEROSPACE & ELECTRONICS, AND IS DISCLOSED IN CONFIDENCE. IT IS THE PROPERTY OF GE AVIATION SYSTEMS LLC OR CRANE AEROSPACE & ELECTRONICS, AND SHALL NOT BE USED, DISCLOSED TO OTHERS OR REPRODUCED WITHOUT THE EXPRESS WRITTEN CONSENT OF GE AVIATION SYSTEMS LLC AND CRANE AEROSPACE & ELECTRONICS.

Export of this technology is controlled under the United States Export Administration Regulations (EAR) (CFR 730-774). An export license may be required before it is used for development, production or use by foreign persons from specific countries. The controller of this data has the individual responsibility to abide by all export laws.



HYDRO-AIRE, INC.
A Crane Co. Company

CRANE AEROSPACE & ELECTRONICS
HYDRO-AIRE, INC.
3000 WINONA AVENUE
P. O. BOX 7722
BURBANK, CALIFORNIA 91510-7722
CAGE: 81982

PRELIMINARY

Initial Issue Date: Jun 23/2009

32-49-02

Page TP-1
Rev. No. 0
Jun 23/2009



HYDRO-AIRE, INC.
A Crane Co. Company

COMPONENT MAINTENANCE MANUAL 142-145-01, 2-8359-1

COPYRIGHT: 2009 CRANE AEROSPACE & ELECTRONICS, HYDRO-AIRE, INC.

All rights reserved.

We welcome your comments concerning this manual. Although every effort has been made to prevent errors, some may occur. When reporting a specific problem, please describe it briefly and include the manual number, the paragraph or figure number, and the page number.

To ask questions or make comments about this manual, please visit our website at www.CraneAE.com/TechPubs.

Crane Aerospace & Electronics
Hydro-Aire, Inc.
3000 Winona Avenue
P. O. Box 7722
Burbank, California 91510

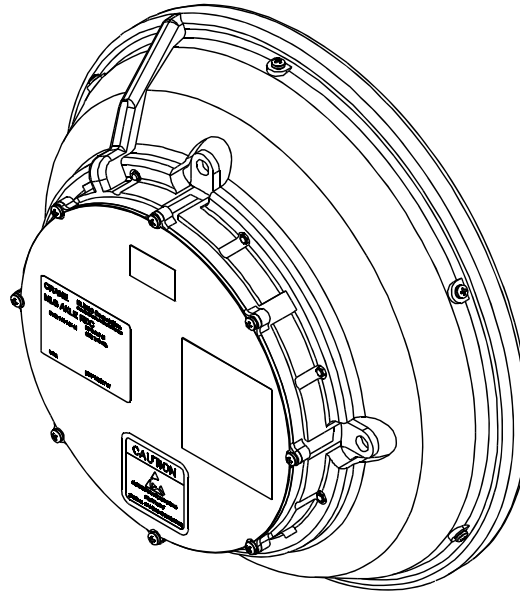
TELEPHONE: 818-526-2600
FAX: 818-842-6117 (24 hr)
WEBSITE: www.CraneAE.com/TechPubs

FCC Warning Statements

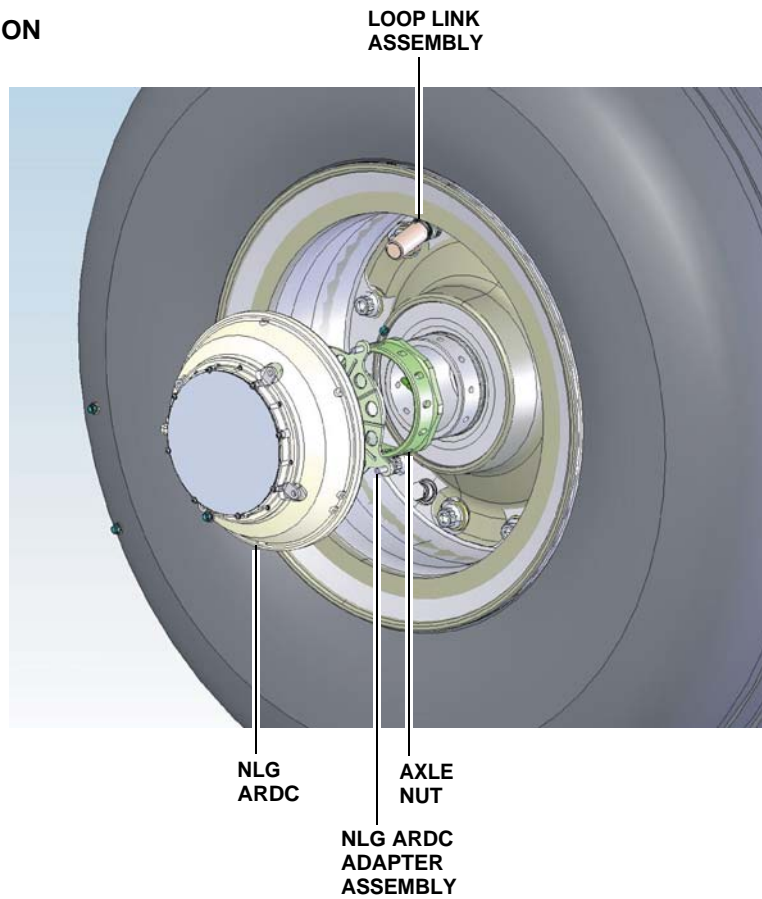
This equipment complies with Part 15.209 and 15.205 of the FCC rules. Any changes or modifications not expressly approved by the manufacturer could void the user's authority to operate the equipment.

This device complies with Part 15 of the FCC rules subject to the following two conditions:

- 1) This device may not cause harmful interference.
- 2) This device must accept all interference received, including interference that may cause undesired operation.



**INSTALLATION
DETAIL**

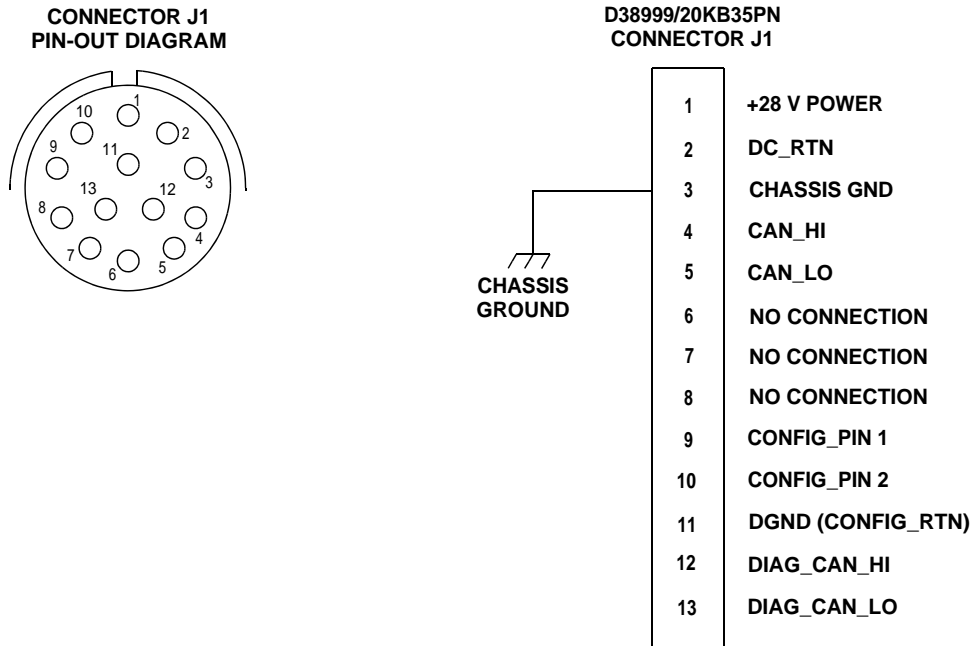


GRAPHIC 32-49-02-99B-812-A01

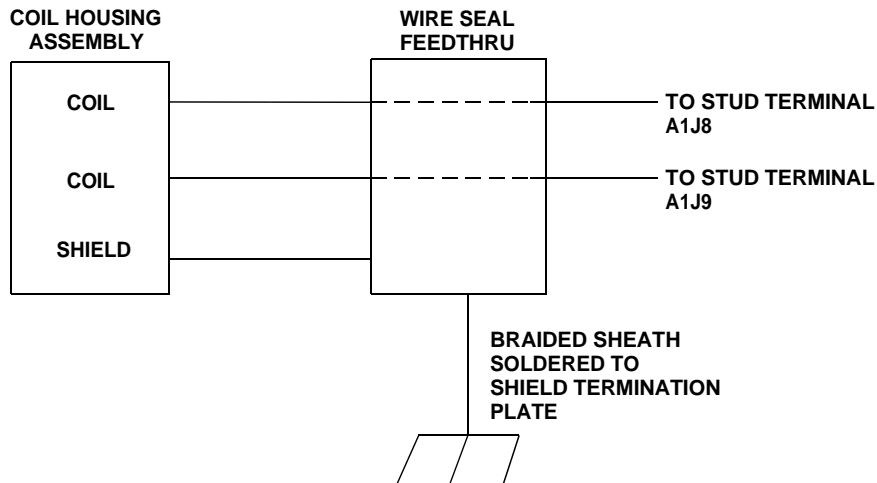
NLG ARDC
Figure 2

32-49-02-99B-812-A01-001.cgm

MLG ARDC WIRING DIAGRAM



COIL ASSEMBLY WIRING DIAGRAM



GRAPHIC 32-49-02-99B-816-A01

Wiring and Pin-Out Diagrams
Figure 4

32-49-02

TASK 32-49-02-870-814-A01

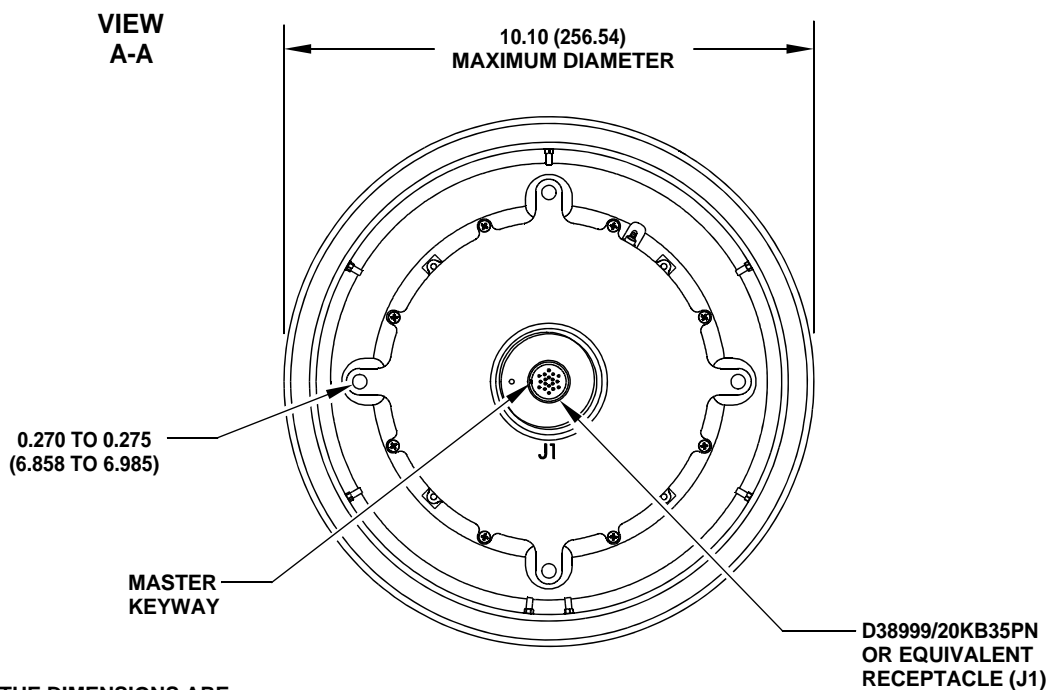
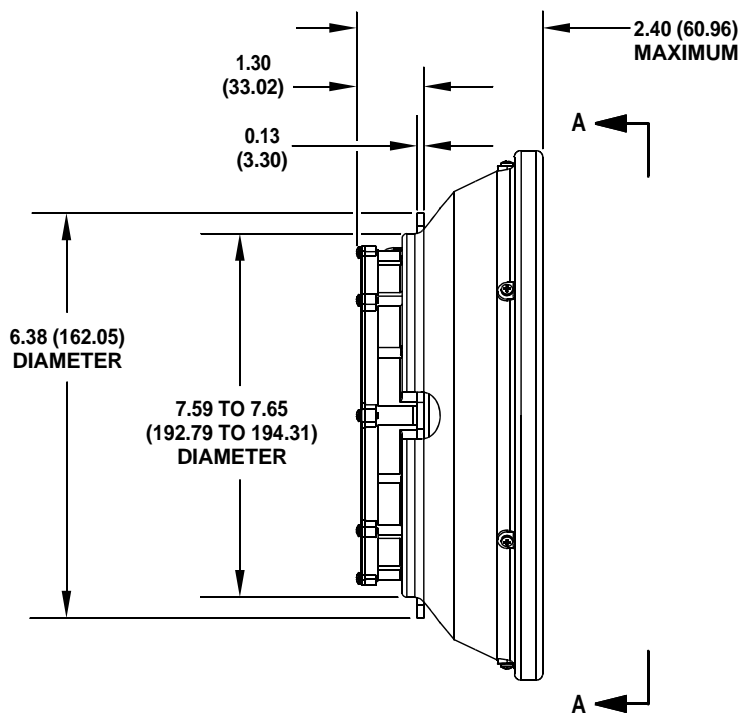
3. Leading Particulars

The leading particulars for the NLG ARDC are given in Table 1.

TABLE 32-49-02-99A-815-A01 Leading Particulars—Table 1

ITEM	SPECIFICATION
Manufacturer	Crane Aerospace & Electronics, Hydro-Aire, Inc. (V81982)
Nomenclature	Nose Landing Gear (NLG) Axle Remote Data Concentrator (ARDC)
Part Numbers: Crane Aerospace & Electronics GE Aviation Systems LLC Boeing	142-145-01 (CAGE V81982) 2-8359-1 (V97415) S683Z001-31 (V81205)
Input Power: Voltage Current	27 to 29 Vdc 50 to 500 mA
Electrical Properties: Insulation Resistance Dielectric Leakage Current	40 megohms minimum at 500 Vdc 2 mA maximum at 1500 Vrms, 60 Hz
Electrical Connector	D38999/20FB35PN
Envelope Dimensions:	(See Figure 5 "GRAPHIC-32-49-02-99B-818-A01" on page 13.)
Weight	2.6 lb (1.2 kg) maximum

Leading Particulars —Table 1



NOTE: THE DIMENSIONS ARE GIVEN IN INCHES (MM).

GRAPHIC 32-49-02-99B-818-A01

Mounting Dimensions
Figure 5

32-49-02