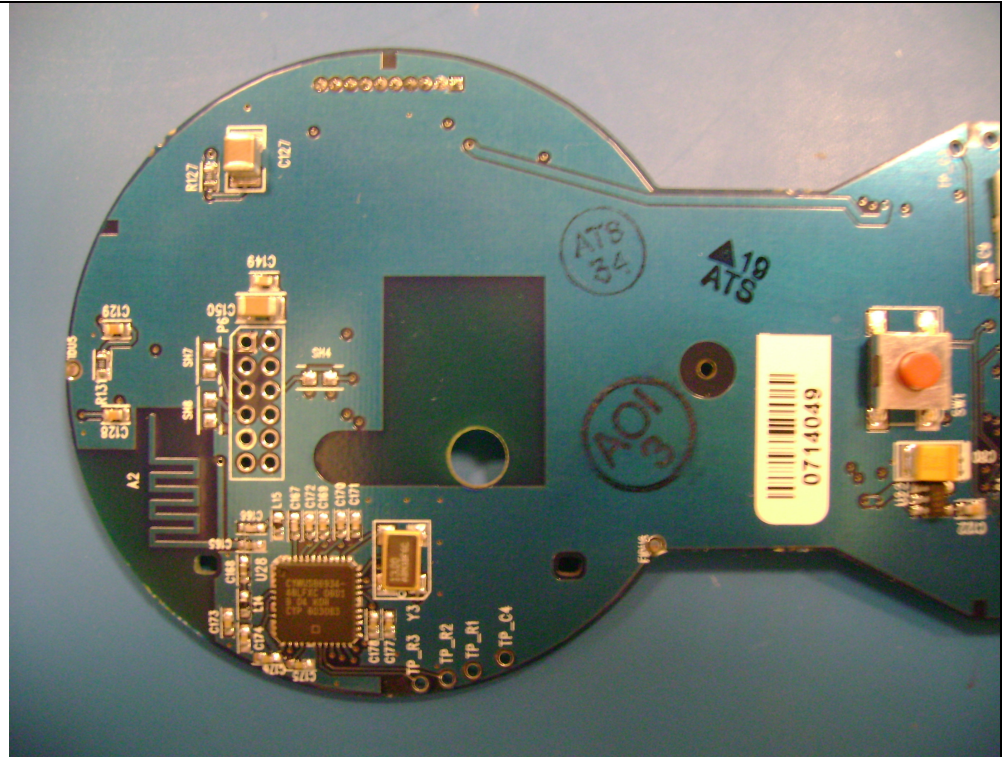


Antenna information:

The radio's antenna is a fixed printed circuit board antenna based on the design described in Cypress application note "WirelessUSB™ Antenna Design Layout Guidelines - AN5032".

Scanpoint Remote
PCBA, radio
component side,
closeup 1.

Cypress
CWUSB6934
radio chip and
antenna are on
bottom left.



Picture of Cypress
reference antenna
design, from
Cypress AN5032

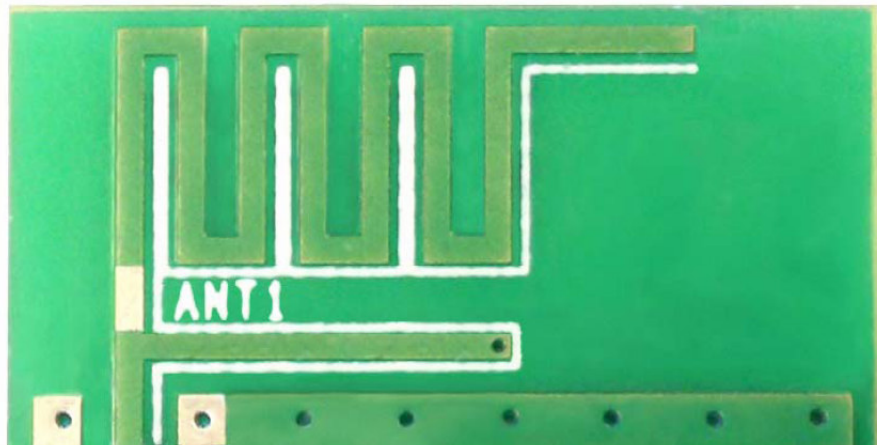


Figure 2. Single Wiggly Antenna Top Side as Implemented on Cypress Reference Radio Module

Dimensions of Cypress reference antenna design, from Cypress AN5032

Antenna Gain

Conducted Output Power (per Verathon): 1mW

ScanPoint Remote:

Field Strength of the Fundamental: 93.5 dBuV/m

Calculated EIRP of Fundamental: -1.73 dBm

Conducted Output Power (per Verathon): 1mW = 0 dBm

Antenna Gain: -1.73 dBi

FloSensor:

Field Strength of the Fundamental: 92.8 dBuV/m

Calculated EIRP of Fundamental: -2.43 dBm

Conducted Output Power (per Verathon): 1mW = 0 dBm

Antenna Gain: -2.43 dBi