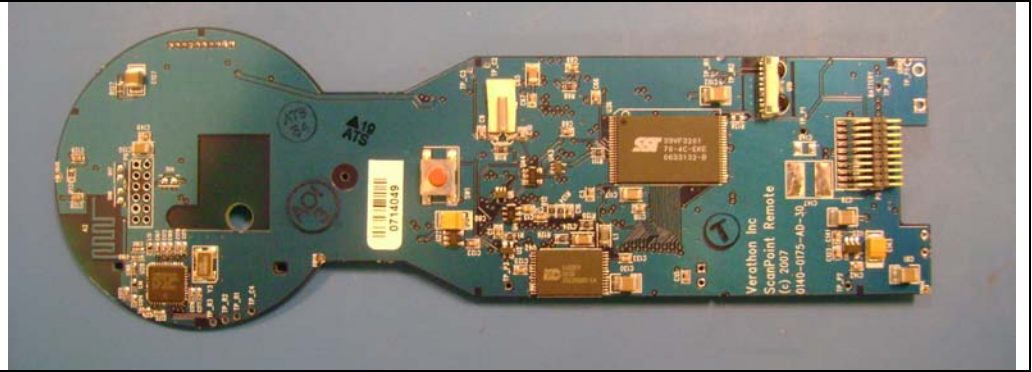
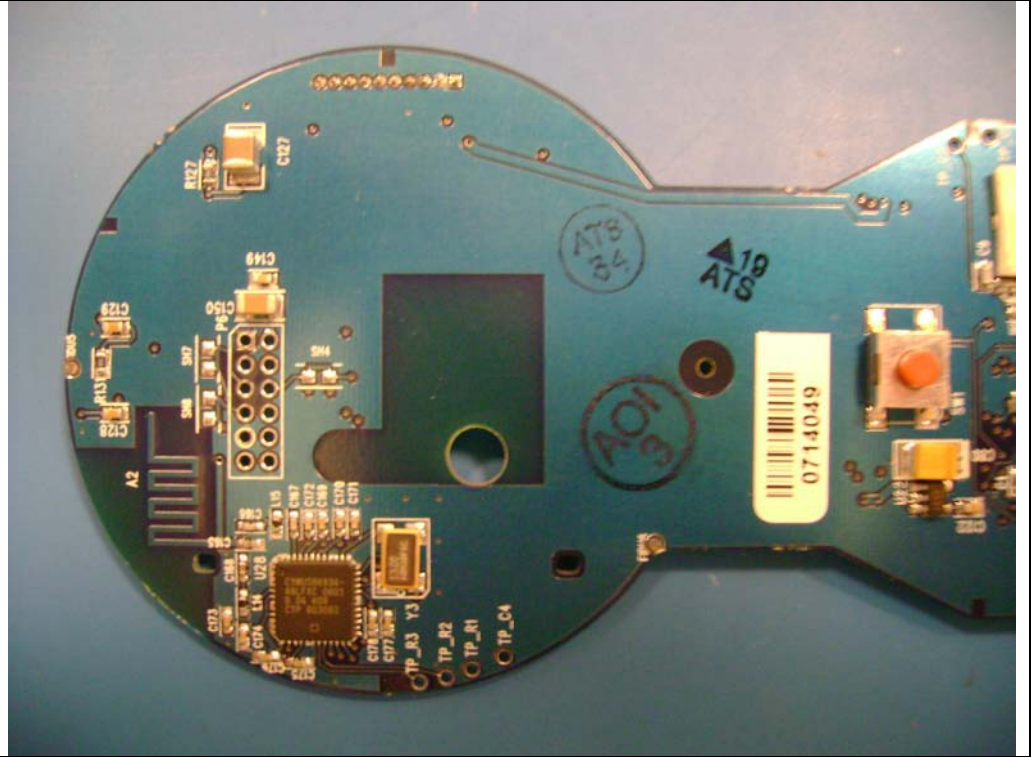


Scanpoint
Remote PCBA,
radio
component side

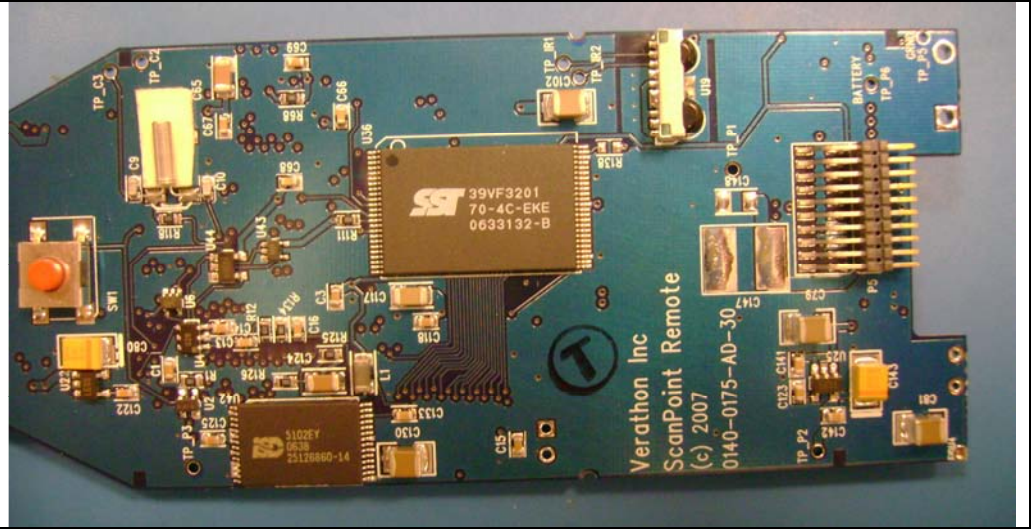


Scanpoint
Remote PCBA,
radio
component side,
closeup 1.

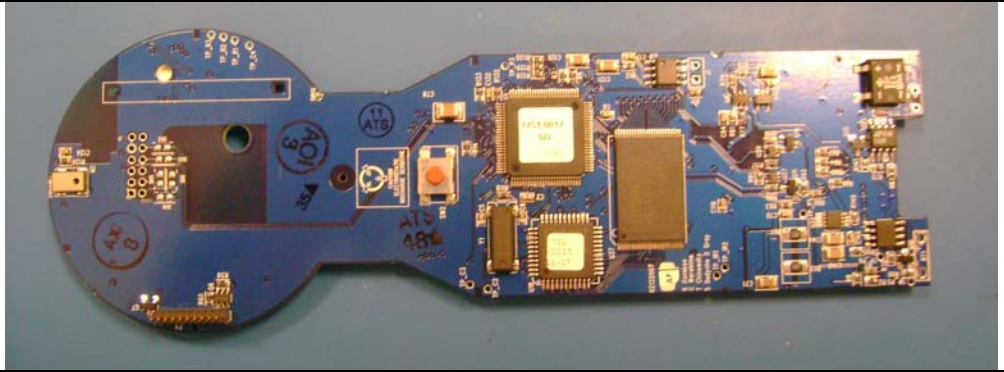
Cypress
CWUSB6934
radio chip and
antenna are on
bottom left.



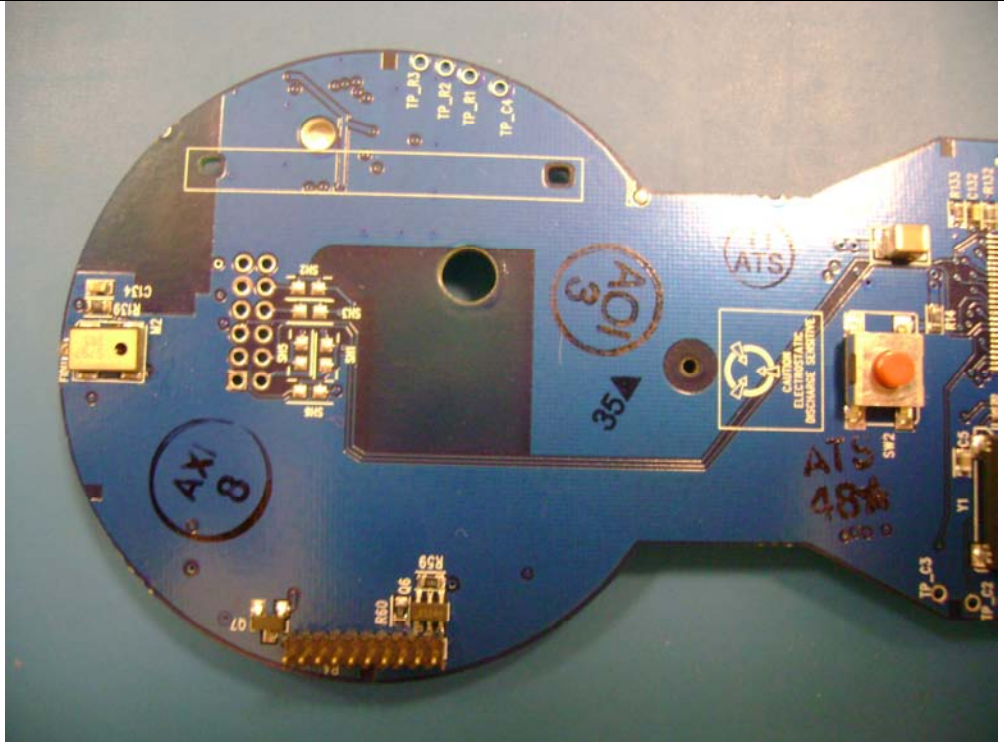
Scanpoint
Remote PCBA,
radio
component side,
closeup 2.



Scanpoint
Remote PCBA,
radio solder
side



Scanpoint
Remote PCBA,
radio solder
side,
closeup 1.



Scanpoint
Remote PCBA,
radio solder
side,
closeup 2.



