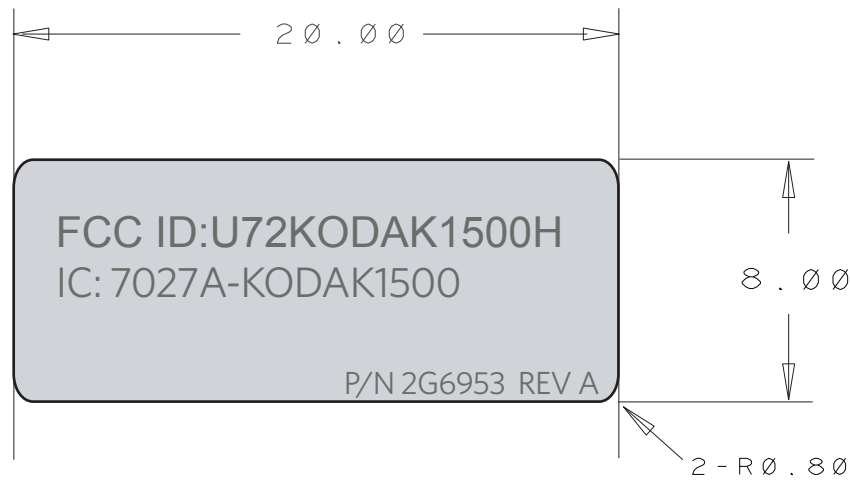
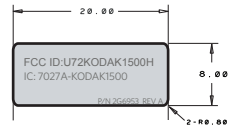


2G6953: (at 400% scale):



2G6953 (at 100% scale):



NOTES:

- 1) MATERIAL, .010" THICK POLYCARBONATE, MATTE FINISH, WITH 3M 467 PRESSURE SENSITIVE ADHESIVE, FAR SIDE.
- 2) PARTS SHALL BE SUPPLIED DIE-CUT TO SHAPE WITH PEEL-OFF LINER.
- 3) COLORS: BACKGROUND TO BE SILVER LINING (PANTONE 428), TEXT AND SYMBOLS TO BE ECLIPSE EXCEPT WHERE INDICATED.
- 4) SHALL MEET THE DURABILITY REQUIREMENTS OF UL 60950-1.
- 5) PLACE WRITE-ON OVERLAMINATE OVER ENTIRE SURFACE.
- 6) LABEL TO BE SERIALIZED STARTING WITH 0101 AND RUNNING SEQUENTIALLY,VENDOR TO TRACK NUMBERS.
- 7) SEE PACKAGING GROUP FOR ARTWORK.

NO. **2G6953**

SHEET 1 NEXT SHEET 0

CHG. NO. DATE REL	REVISIONS	DR BY APPS.
REV A 07/23/09	INITIAL RELEASE	MM

UNLESS OTHERWISE SPECIFIED  
 LINEAR TOLERANCE  $\pm 1.6$   
 ANGULAR TOLERANCE  $\pm$  —  
 DIMENSIONS ARE IN MILLIMETERS

**MD**

CARESTREAM HEALTH, INC.  
 ROCHESTER, NY 14608

DR. BUCKTOOTH	DATE	07-22-09	CK
DFTG. JEM	DES. ENG.	L. CHEN	MFG. ENG. L. CHEN
NAME	LABEL-FCCCanadian Statement, Handpiece		
SCALE	1X SIZE		DWG SIZE <b>A</b>

NO. **2G6953**

SHEET 1 NEXT SHEET 0