

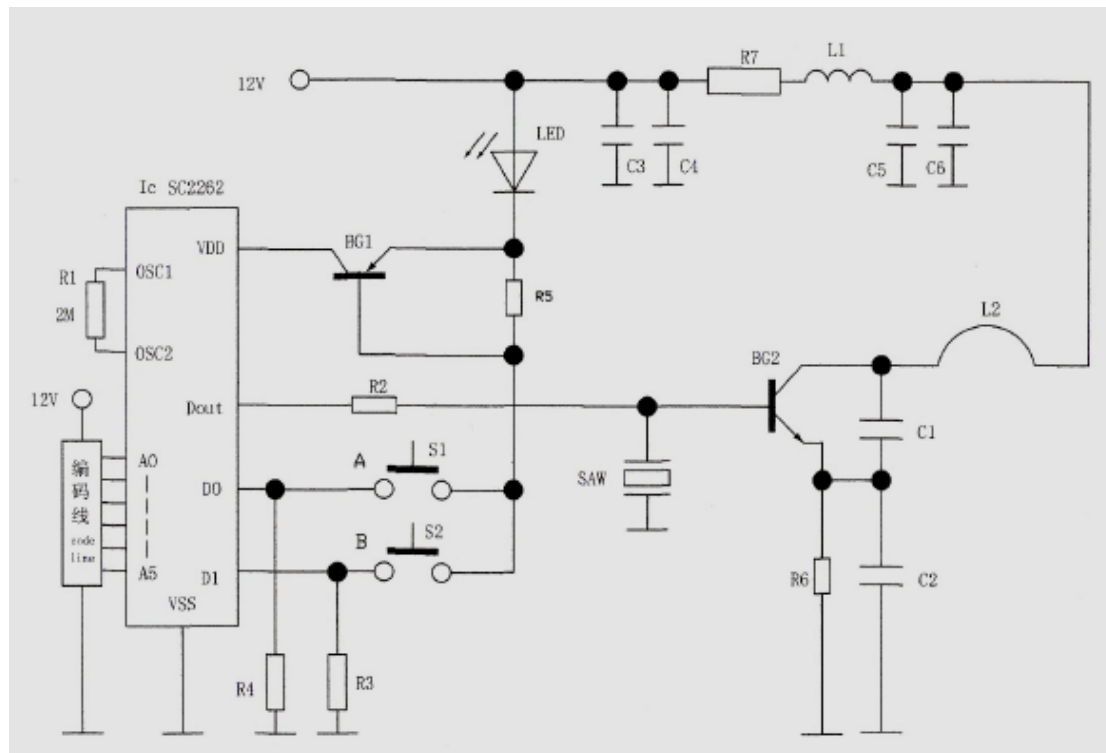
Theory of Operation:

Put a 12V alkaline battery into the battery cover (battery polar +/-)

Press A for the winch running forward, Press B for the winch running reverse.

The remote control distance will be about 5m.

The RF signal is 315MHz.



Circuit Description:

The 315 crystal generate signal and transfer to coding chip. There is tow codes. Then the coding signal will be sent to the triode and transmit to the space by integral antenna. Two codes are controlled by button “A” and “B”.