

LIMITED WARRANTY

BG Tech America, Inc. warrants that its Early Warning Radar Detectors, and the component parts thereof, will be free of defects in workmanship and materials for period of one (1) year from the date of first consumer purchase.

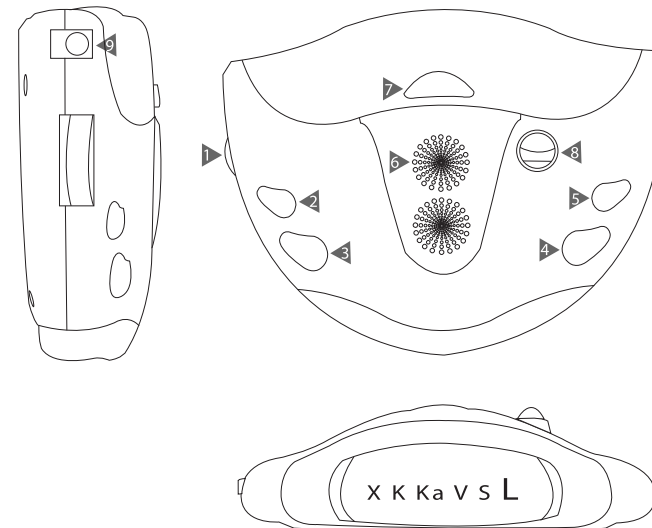
This warranty covers all defects in materials and workmanship. This warranty does not apply if the unit has been subject to physical abuse, improper installation, modification, or if the housing or serial number of the unit has been removed. The enforceability of this warranty is limited to the original consumer purchaser and is not transferable, to enforceable by, any subsequent owner.

In the event of a defect, malfunction or other failure to conform to this warranty, BG Tech America will, at its sole discretion, repair or replace the unit at no charge. You are responsible for all shipping costs in connection with warranty service pursuant to this warranty.

There are no express warranties covering the unit other than those set forth in this warranty. All implied warranties are eliminated to the period of this warranty and nor warranties, expressed or implied, extend beyond this period.

BG Tech America will in no event be liable for any consequential, incidental, indirect or special damages (including, but not limited to, lost profits) arising out of or in connection with the use, misuse, or function of the unit.

IDENTIFYING YOUR UNIT



INSTALLATION

MOUNTING GUIDELINES

- Mount the unit as low as possible near the center of the windshield. (See Mounting Instructions)
- Do NOT mount your unit behind wipers, ornaments, mirrored sunscreen glass, etc. as these obstructions have metal surfaces that may affect radar/laser signals and reduce critical warning time.
Note: Tinted glass does not affect response.
- Avoid placing the unit in direct contact with windshield.
- Do NOT mount the detector where the driver or passenger might collide in the case of an abrupt halt.
- Mount the unit in a leveled position.



Some newer windshields have an Instaclear™ or Electriclear™ type coating, which can affect radar signals. Consult your dealer or your owner's manual to determine if your windshield has this coating.



To avoid the possibility of theft, conceal your unit when not in use and avoid exposure to extremely high temperatures, which can temporarily impair your detector's performance.

SPECIFICATIONS

RADAR

Receiver Type: Dual conversion Superheterodyne
Antenna Type: Linear polarized, self-contained antenna
Detector Type: Scanning frequency Discriminator
Frequency of Operation: 10.525 GHz/ \pm 50 MHz (X-band)
24.150 GHz/ \pm 100 MHz (K-band)
33.800 GHz (Ka-POP)
34.700 GHz/ \pm 1.300 MHz (Ka SuperWide-band)
24.110 GHz/24.230 GHz (Emergency Vehicle)
24.070 GHz/24.230 GHz (Road Hazards)
24.110 GHz/24 190 GHz (Train)

LASER

Receiver Type: Pulse laser signal receiver
Detector Type: Digital signal processor pulse width discriminator
Opto Sensor: Dual convex condenser lens and high-speed photo diode detector
Spectral Response: 800 ~ 1,100nm

GENERAL

Temperature: Range -4° to 158 ° F (-20° to 70° C)
Power Requirements: 12 ~ 16V DCV, 310mA (Negative Ground)
Dimensions (HWD): 1.2" x 2.7" x 4.4"
Weight: 5.0 oz

Note: Specifications are typical. Individual units are may vary and change without notice. Performance may vary depending on drivers' behavior and environments.

Subject to one or more of the following patents: (#5,497,148)

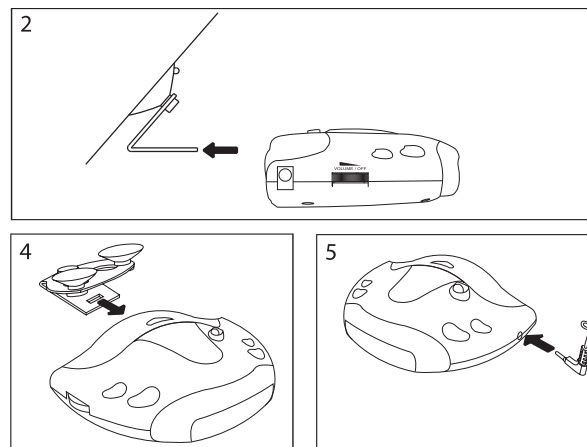
Other patents pending: n/a

TROUBLE SHOOTING

Problem	Cause of Problem	Solution
Power Malfunction	Be sure all power connection is secure.	Reinsert plug and rotate.
	Fuse in Power Plug is defective.	Replace with a 2A 1 ¼ x ¼ fast acting fuse.
	Cigarette lighter socket is not clean.	Clean it with fine emery cloth to ensure a good, clean connection.
	Fuse or electrical wiring for cigarette light is defective.	Consult your dealer or an automobile mechanic.
False Alerts	High volume of non-police X band in use	Use X-Off mode to reduce alerts.
Poor Laser Detection	Laser detection lens are maybe blocked.	Reposition unit.(see mounting instructions)
	Radar Signal is undetectable through windshield.	Determine if your vehicle has a "heated windshield coating." (see Mounting Guidelines)
Partial Display	Dark Mode engaged	Disengage dim or dark mode.
No Signal Response	The police car might not be equipped with radar OR Police might be using VASCAR-type speed detection.	

WINDSHIELD MOUNTING

- 1 Attach the suction cups to the bracket.
- 2 Make sure the suction cups and your windshield are clean and push the bracket firmly onto the windshield.
- 3 Before attaching the Radar Detector, if necessary, adjust the angle by gently bending the bracket for correct angle.
- 4 Attach the detector to the bracket and check the angle.
- 5 Plug power cord into the cigarette lighter then to the detector.



USING SAFETY ALERT SYSTEM™

DASHBOARD MOUNTING

- 1 To place the detector on the dashboard, find a location where the unit has a clear level view of the road.



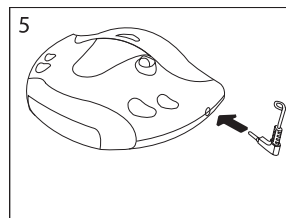
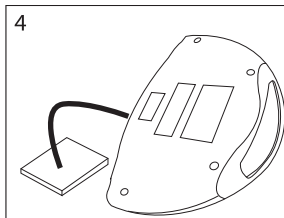
The angle cannot be adjusted after mounting.

- 2 Remove paper backing from one side of the Velcro fastener.
- 3 Attach the pad to the dashboard at your chosen location and remove the other paper backing.
- 4 Attach the detector to the Velcro fastener.



You can remove and reattach the unit as often as you like.

- 5 Plug power cord into cigarette lighter then to the detector.



What is Safety Alert System™?

Safety Alert is a low-powered transmitter used by some emergency services and road crews to alert drivers of hazardous conditions. The Safety Alert system™ can indicate stationary, moving, or railroad hazards. Radar detectors that are Safety Alert compatible indicate the presence of a Safety Alert signal. While this system is not in widespread use yet, there are already several different radar detector models that can detect this system. This system has the potential to dramatically increase a driver's awareness to road hazards and decrease the potential for motor vehicle accidents.



Use of this product is not intended for nor does it ensure that motorists and any passenger will not be involved in a traffic motor vehicle accident. It is only intended to alert motorists that an emergency/service vehicle equipped with a CODE 3 or Safety Alert Transmitter is in the area as defined by the range of the product. Motorists are expected to exercise all due precautions while using the product and to observe all applicable traffic laws.