

Datalogic S.r.l.

Via San Vitalino 13
40012 Calderara di Reno (BO)
Italy
Tel. +39 051 3147011
Fax +39 051 3147205

©2024 Datalogic S.p.A. and/or its affiliates

All rights reserved. Without limiting the rights under copyright, no part of this documentation may be reproduced, stored in or introduced into a retrieval system, or transmitted in any form or by any means, or for any purpose, without the express written permission of Datalogic S.p.A. and/or its affiliates.

Owners of Datalogic products are hereby granted a non-exclusive, revocable license to reproduce and transmit this documentation for the purchaser's own internal business purposes. Purchaser shall not remove or alter any proprietary notices, including copyright notices, contained in this documentation and shall ensure that all notices appear on any reproductions of the documentation.

Electronic versions of this document may be downloaded from the Datalogic website (www.datalogic.com). If you visit our website and would like to make comments or suggestions about this or other Datalogic publications, please let us know via the "Contact" page.

Disclaimer

Datalogic has taken reasonable measures to provide information in this manual that is complete and accurate, however, Datalogic shall not be liable for technical or editorial errors or omissions contained herein, nor for incidental or consequential damages resulting from the use of this material. Datalogic reserves the right to change any specification at any time without prior notice.

Trademarks

Datalogic and the Datalogic logo are registered trademarks of Datalogic S.p.A. in many countries, including the U.S.A. and the E.U.

Memor, Halogen and DeepSight are trademarks of Datalogic S.p.A. and/or its affiliates. All other brand and product names may be trademarks of their respective owners.

EULA

See See www.datalogic.com/eula.

Patents

See www.patents.datalogic.com for patent list.


Reference Documentation

For further information refer to the SDK help on-line and to the Memor 12/17 User's Manual, downloadable from our website <https://developer.datalogic.com/mobile-computers>.

Support Through the Website

Datalogic provides several services as well as technical support through its website.

Log on to www.datalogic.com.

For quick access, from the home page click on the search icon , and type in the name of the product you're looking for. This allows you access to download Data Sheets, Manuals, Software & Utilities, and Drawings.

Hover over the Support & Service menu for access to Services and Technical Support.

MEMOR™ 12/17 FAMILY

QUICK START GUIDE



Rugged Mobile Computer/
Barcode Reader with 1D/2D Imager
Model: AELNRNA (WWAN SKU)
Model: AELWF (WLAN SKU)

See the Safety & Regulatory Addendum included with your product for additional regulatory, safety and legal information.

Warranty Terms and Conditions

Refer to the Memor 12/17 User's Manual, downloadable from our website.

www.datalogic.com



822004740 (Rev. A) November 2024

OUT OF THE BOX

The Memor 12/17 package contains:

- Memor 12/17 PDA (Model SGVNR/SGVNRNA - WWAN SKU; Model SGVWF - WLAN SKU)
- Rechargeable one-piece battery pack
- Quick Start Guide
- Safety & Regulatory Addendum
- End User License Agreement (EULA) Sheet

Remove all the components from their packaging; check their integrity and compare them with all the packing documents.



CAUTION: Keep the original packaging for use when sending products to the technical assistance center. Damage caused by improper packaging is not covered under the warranty.

GENERAL VIEW

Top View



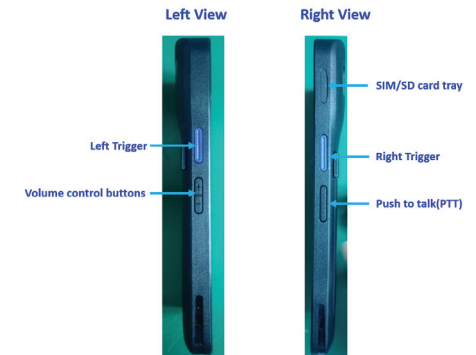
Front View



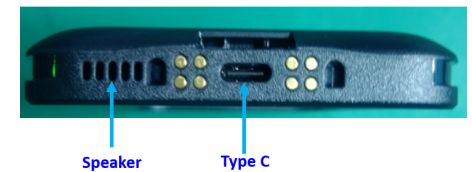
Back View



Side View



Bottom View



CAUTION: When cleaning the terminal, avoid applying the detergent directly on the contacts. Moisten a soft dry cloth with an approved cleaning agent (refer to the Memor 12/17 User's Manual) to rub it across them. Do not leave any residue.

INSTALL THE BATTERY

Insert the battery pack into the slot, bottom first, and press it into place.



INSTALL THE PROTECTIVE BOOT

The protective boot provides additional protection to the device and is available as optional accessory. Insert the device into the protective boot, top first.



To remove the protective boot, grab the protective boot sides with your fingers while pressing the back bottom of the device with your thumbs, as shown in the picture below.



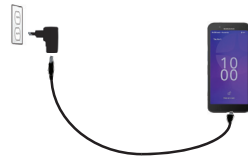
CHARGING INSTRUCTIONS

The battery pack is not initially fully charged. After installing the battery, charge it with a USB Type-C cable or with a dock (single slot dock, 4-slot dock, vehicle dock, 4-slot battery charger).

During the charging process the charging LED positioned at the top right side of the display glows red constantly. Once the charging process has been completed, the charging LED glows green constantly.

Charge with USB

Use a USB Type-C cable in conjunction with the power supply adapter (sold separately, p/n 94ACC0383) to charge the device from a power outlet. The charger is modular, with one adapter and five switchover plugs.



You can also use the USB cable to charge the Memor 12/17 from any self-powered USB hub or USB port on a computer.



CAUTION: Use only the Datalogic power supply 94ACC0383 to power the Memor 12/17.

Charge with the Dock

Install the protective boot on the device, or insert the adapter into the dock as shown below.



Insert the device into the dock with the screen facing front and the head facing up.



Memor 12/17 with Protective Boot Memor 12/17 without Protective Boot

To remove the device from the dock, pull it upwards while holding the dock firmly down.



CAUTION: Use only the Datalogic power supply 94ACC0383 to power any of the docks.

Do not put any foreign object such as, but not limited to, coins, paper clips, stickers inside the slot of any of the docks.

Do not apply any sticker to the Memor 12/17 (see the examples below).



NOTE: For information on the single slot dock/ 4-slot dock/ vehicle dock/ 4-slot battery charger refer to the Quick Start Guide included in the dock's box.



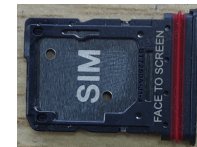
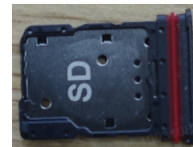
NOTE: The Memor 12/17 may get warm during charging. This is normal and does not mean a malfunction.

INSTALL THE SIM/SD CARD

1. Turn off the Memor 12/17.



2. Take out the card tray and insert the SD/SIM card, the SIM side is for the SIM card (only for Memor 17 models), the other side is for the SD card.

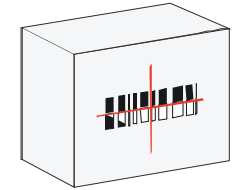


SCANNING AND IMAGING

The Memor 12/17 embeds the new Datalogic Halogen™ DE2121-DL scan engine. DeepSight™ integrated technology guarantees first-class reading performances even in extreme light and dark environment conditions.

To scan a barcode symbol:

1. Point the scan window at the barcode from a distance within the reading range.
2. Press one of the scan triggers. The imager projects a red laser aiming cross/spot that is used to position the barcode within the field of view.



3. Center the symbol in any orientation, then either wait for the timeout or release the Scan Key to capture the image.

If the scan has been successful:

- If enabled, the good read beep plays.
- If enabled, the GreenSpot projects a green spot onto the bar code image.
- If enabled, the good read indicator glows solid green.

