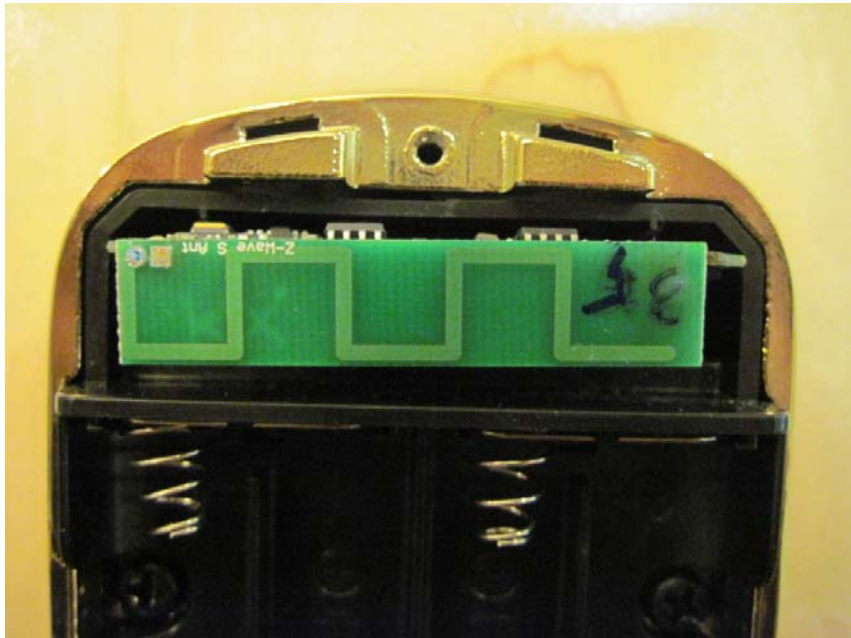
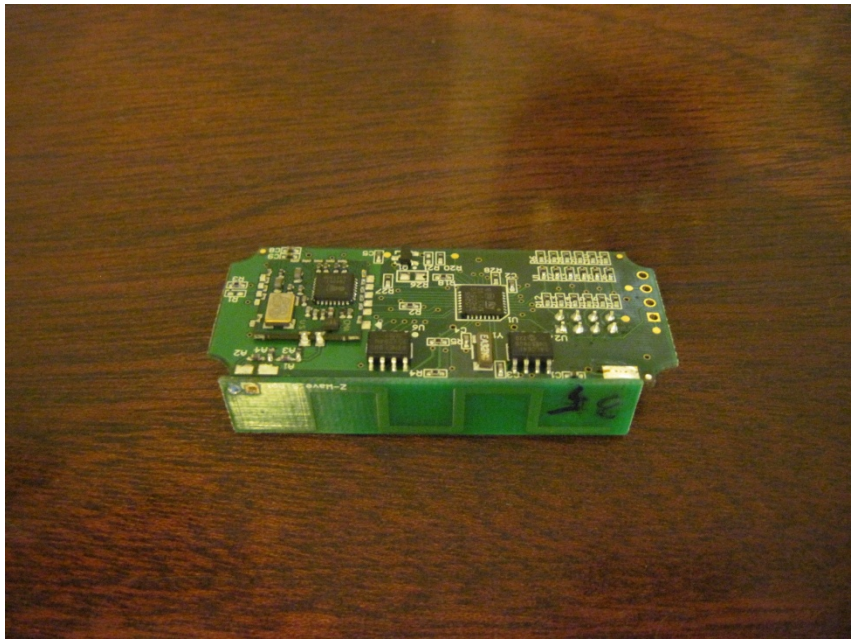


<u><b>INTERNAL PHOTOS</b></u>	
Company Name	Assa Abloy
Model #	YRDZW
FCC ID #	U4A-YRHCPZW0
IC #	6982A-YRHCPZW0

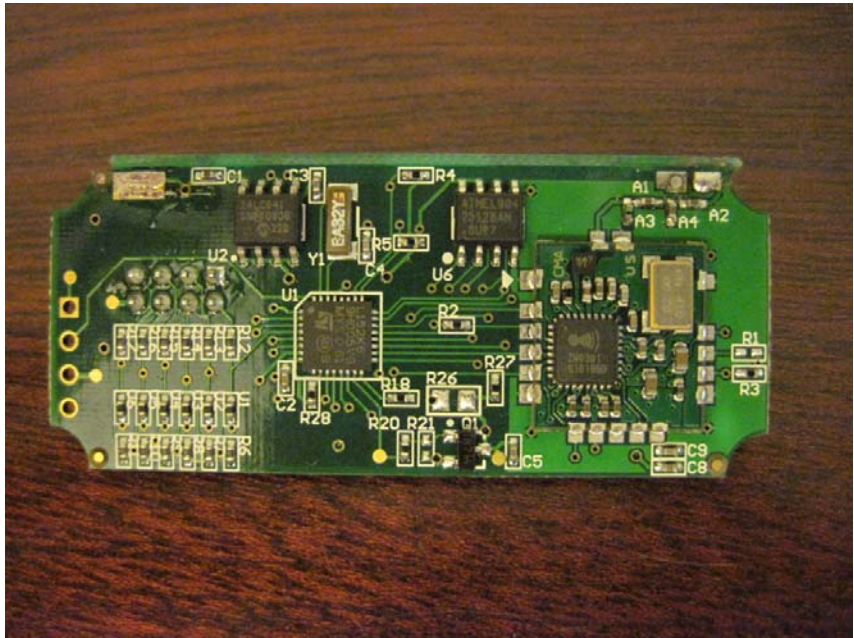


Meandering copper trace PCB antenna shown. The antenna is directly attached to the radio board.

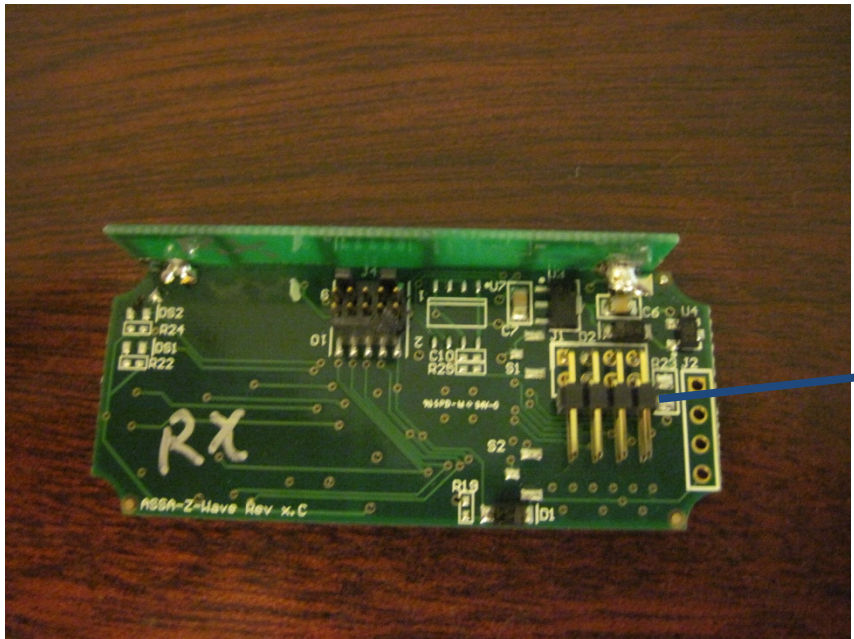


Circuit board and antenna assembly shown

<u>INTERNAL PHOTOS</u>	
Company Name	Assa Abloy
Model #	YRDZW
FCC ID #	U4A-YRHCPZW0
IC #	6982A-YRHCPZW0



With respect to placement in the lock, the top of board is shown

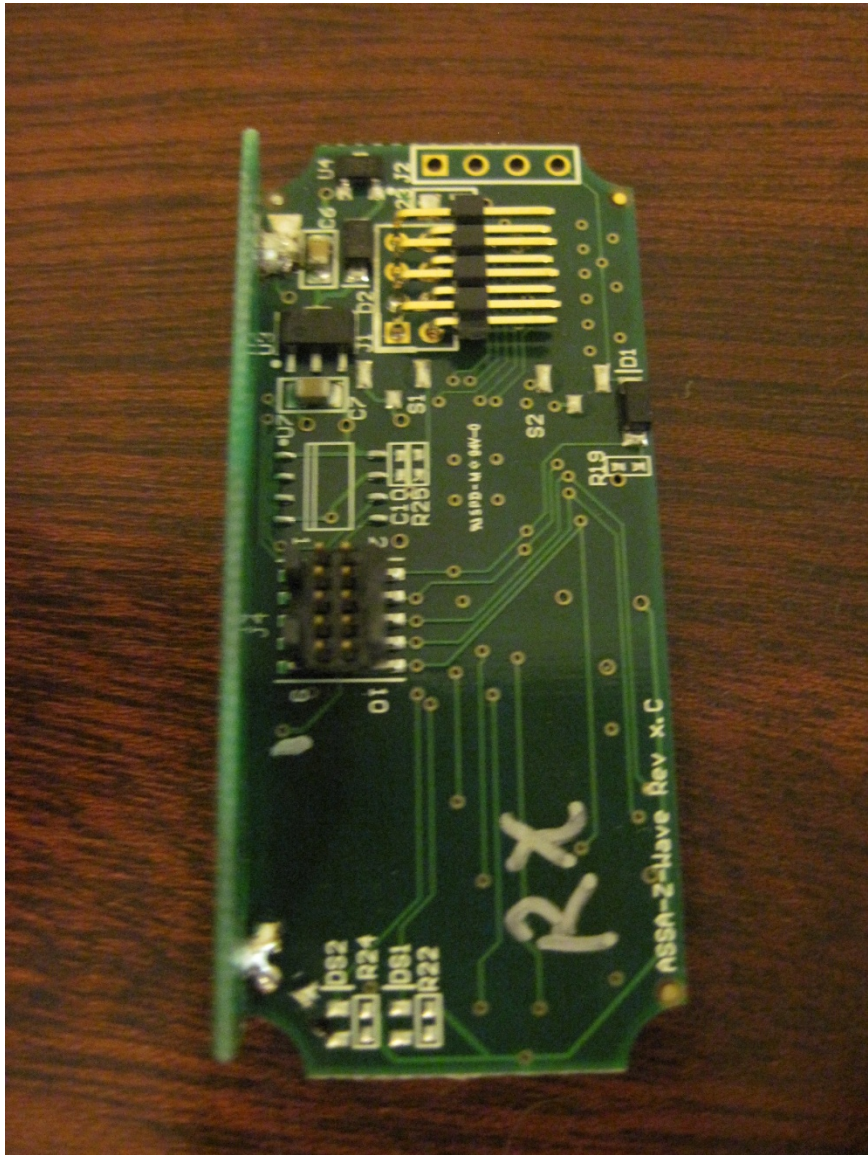


8-pin connector which mates the board to the door lock unit.  
Only physical connection between the pieces of the system

With respect to placement in the lock, the top of board is shown. “RX” labeled on board is a notation for the test engineer that the unit is programmed for receive mode. Another identical sample was programmed for transmit mode.



<u>INTERNAL PHOTOS</u>	
Company Name	Assa Abloy
Model #	YRDZW
FCC ID #	U4A-YRHCPZW0
IC #	6982A-YRHCPZW0



Alternate view of the back side of the board.