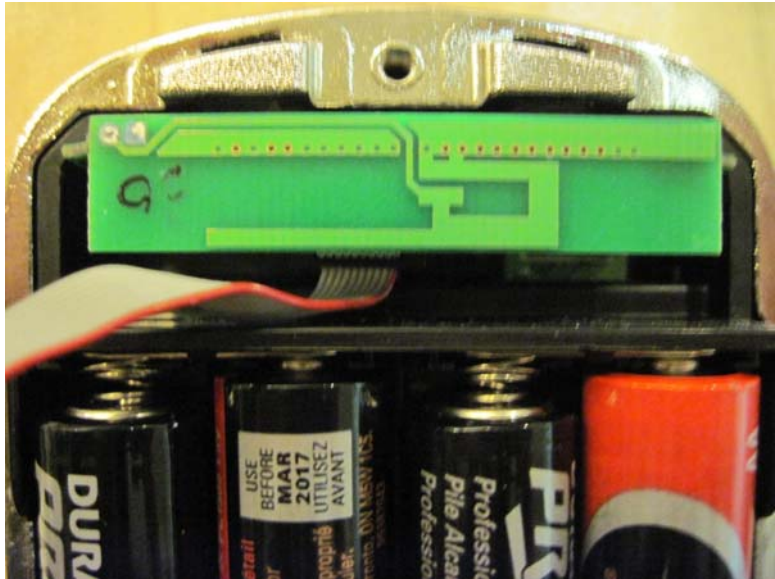
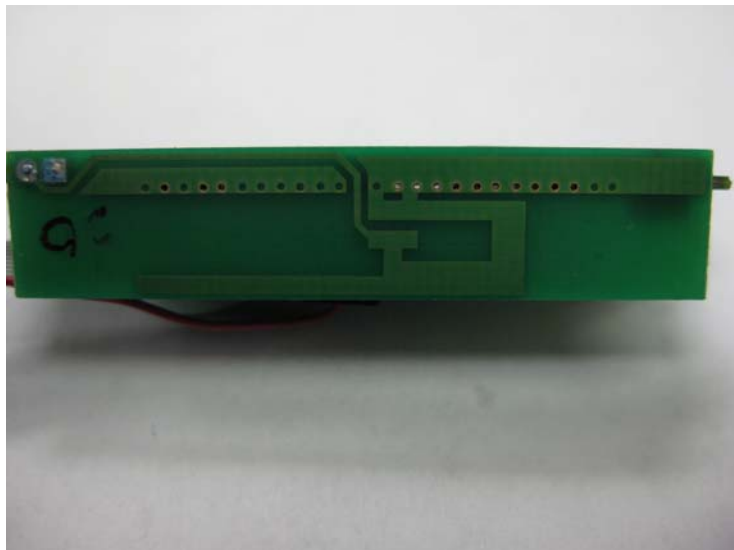


<u><b>INTERNAL PHOTOS</b></u>	
Company Name	Assa Abloy
Model #	YRDZB
FCC ID #	U4A-YRHCPZB0
IC #	6982A-YRHCPZB0

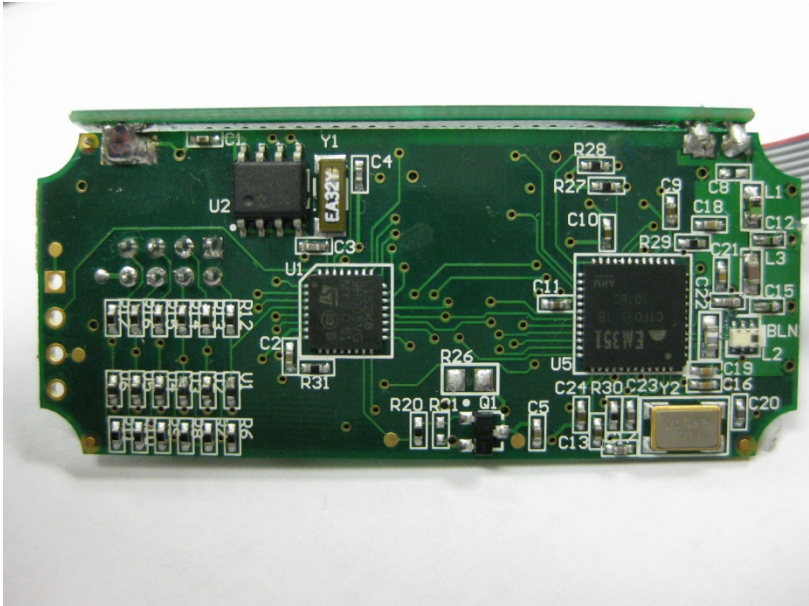


Inverted-F PCB antenna shown

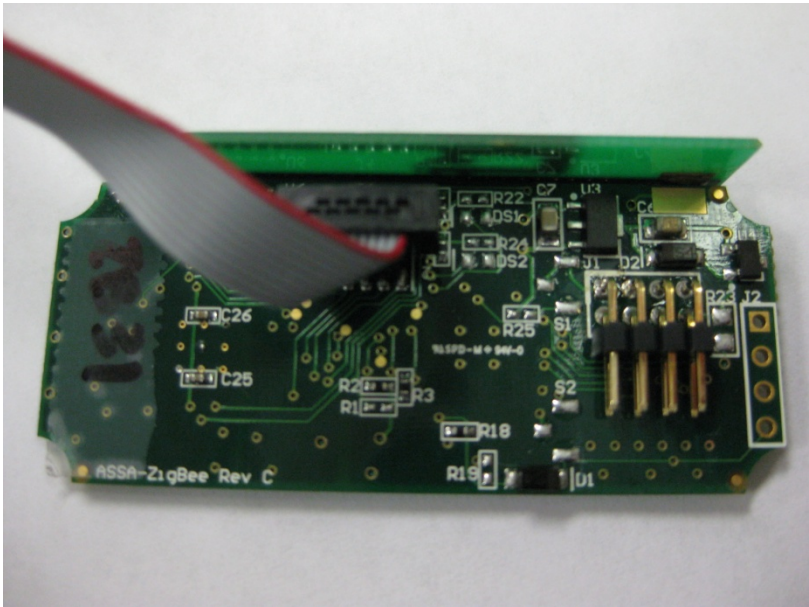


Attachment of the PCB antenna to the radio board

<u>INTERNAL PHOTOS</u>	
Company Name	Assa Abloy
Model #	YRDZB
FCC ID #	U4A-YRHCPZB0
IC #	6982A-YRHCPZB0

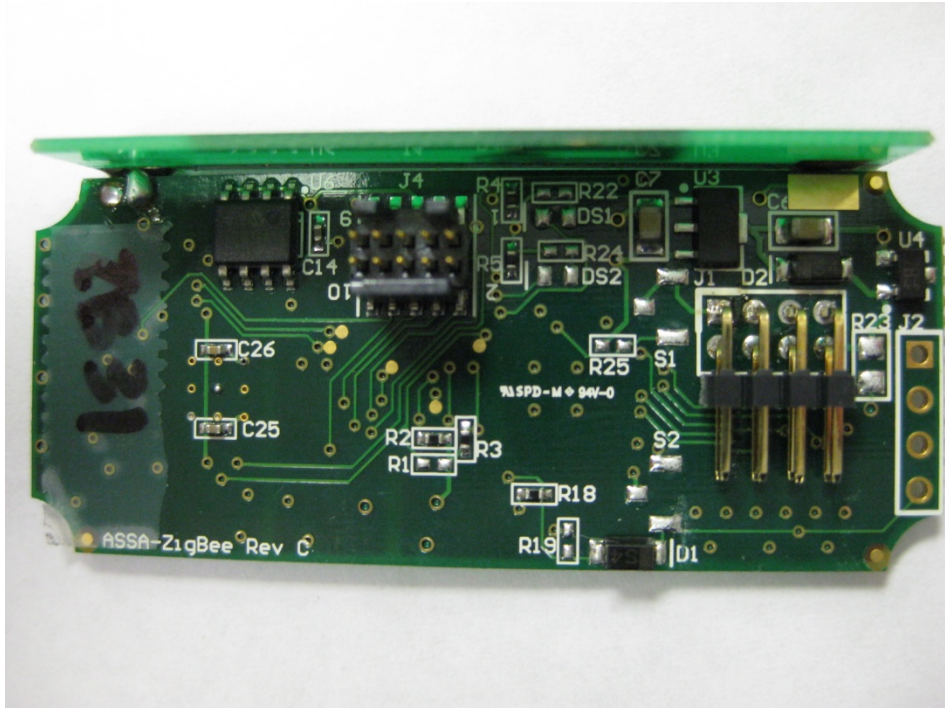


The top of the radio board (with respect to the position of the board in the housing)



The bottom of the radio board (with respect to the position of the board in the housing). 8-pin connector shown which is the only physical connection from the radio board to the lock.

<u><b>INTERNAL PHOTOS</b></u>	
Company Name	Assa Abloy
Model #	YRDZB
FCC ID #	U4A-YRHCPZB0
IC #	6982A-YRHCPZB0



The bottom of the radio board (with respect to the position of the board in the housing).