

NTB Internal Photos Unsecured Side of Door (Touchscreen)



Back with backplate removed



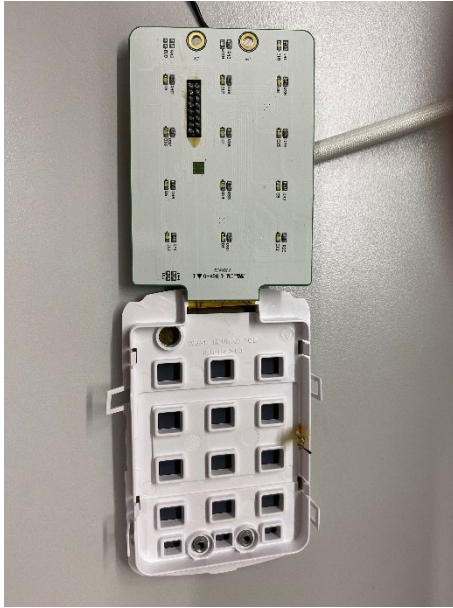
Touchscreen Assembly Back



Touchscreen Assembly Front



RFID Antenna Behind Touchscreen



Touchscreen Back, PCB Front



Touchscreen Front, PCB Back

A photograph of a disassembled mobile phone. The back cover is on the left, showing a battery with a warning label that reads: "WARNING: FOR USE WITH ALKALINE CELL BATTERIES ONLY. AVOID EXPOSURE TO FIRE AND FLAMMABLE LIQUIDS." The internal components, including the green circuit board and various electronic components, are visible in the center. The front of the phone, which is a silver-colored metal frame with a circular opening for the lens, is on the right.

The image shows a green PCB with various components. At the top is a black rectangular module. Below it is a large black circular component. To the left of the circle is a QR code and a label with the following text:

WGA11 BLE MAIN PG4 230119
PC4M-C42B-54
11 55
AU

Below the QR code is the text "A2PM-1430S-Y1". To the right of the circle is a black rectangular component. At the bottom of the board are two white connectors labeled "EX P" and "SPK".

The image shows a green PCB with various electronic components. Key components include:

- ICs:** U1 (Microcontroller), U2 (Memory), U3 (Memory), U4 (Memory), U5 (Memory), U6 (Memory), U7 (Memory), U8 (Memory), U9 (Memory), U10 (Memory), U11 (Memory), U12 (Memory), U13 (Memory), U14 (Memory), U15 (Memory), U16 (Memory), U17 (Memory), U18 (Memory), U19 (Memory), U20 (Memory), U21 (Memory), U22 (Memory), U23 (Memory), U24 (Memory), U25 (Memory), U26 (Memory), U27 (Memory), U28 (Memory), U29 (Memory), U30 (Memory), U31 (Memory), U32 (Memory), U33 (Memory), U34 (Memory), U35 (Memory), U36 (Memory), U37 (Memory), U38 (Memory), U39 (Memory), U40 (Memory), U41 (Memory), U42 (Memory), U43 (Memory), U44 (Memory), U45 (Memory), U46 (Memory), U47 (Memory), U48 (Memory), U49 (Memory), U50 (Memory), U51 (Memory), U52 (Memory), U53 (Memory), U54 (Memory), U55 (Memory), U56 (Memory), U57 (Memory), U58 (Memory), U59 (Memory), U60 (Memory), U61 (Memory), U62 (Memory), U63 (Memory), U64 (Memory), U65 (Memory), U66 (Memory), U67 (Memory), U68 (Memory), U69 (Memory), U70 (Memory), U71 (Memory), U72 (Memory), U73 (Memory), U74 (Memory), U75 (Memory), U76 (Memory), U77 (Memory), U78 (Memory), U79 (Memory), U80 (Memory), U81 (Memory), U82 (Memory), U83 (Memory), U84 (Memory), U85 (Memory), U86 (Memory), U87 (Memory), U88 (Memory), U89 (Memory), U90 (Memory), U91 (Memory), U92 (Memory), U93 (Memory), U94 (Memory), U95 (Memory), U96 (Memory), U97 (Memory), U98 (Memory), U99 (Memory), U100 (Memory).
- Capacitors:** C1, C2, C3, C4, C5, C6, C7, C8, C9, C10, C11, C12, C13, C14, C15, C16, C17, C18, C19, C20, C21, C22, C23, C24, C25, C26, C27, C28, C29, C30, C31, C32, C33, C34, C35, C36, C37, C38, C39, C40, C41, C42, C43, C44, C45, C46, C47, C48, C49, C50, C51, C52, C53, C54, C55, C56, C57, C58, C59, C60, C61, C62, C63, C64, C65, C66, C67, C68, C69, C70, C71, C72, C73, C74, C75, C76, C77, C78, C79, C80, C81, C82, C83, C84, C85, C86, C87, C88, C89, C90, C91, C92, C93, C94, C95, C96, C97, C98, C99, C100.
- Resistors:** R1, R2, R3, R4, R5, R6, R7, R8, R9, R10, R11, R12, R13, R14, R15, R16, R17, R18, R19, R20, R21, R22, R23, R24, R25, R26, R27, R28, R29, R30, R31, R32, R33, R34, R35, R36, R37, R38, R39, R40, R41, R42, R43, R44, R45, R46, R47, R48, R49, R50, R51, R52, R53, R54, R55, R56, R57, R58, R59, R60, R61, R62, R63, R64, R65, R66, R67, R68, R69, R70, R71, R72, R73, R74, R75, R76, R77, R78, R79, R80, R81, R82, R83, R84, R85, R86, R87, R88, R89, R90, R91, R92, R93, R94, R95, R96, R97, R98, R99, R100.
- Other components:** D1 (Diode), D2 (Diode), D3 (Diode), D4 (Diode), D5 (Diode), D6 (Diode), D7 (Diode), D8 (Diode), D9 (Diode), D10 (Diode), D11 (Diode), D12 (Diode), D13 (Diode), D14 (Diode), D15 (Diode), D16 (Diode), D17 (Diode), D18 (Diode), D19 (Diode), D20 (Diode), D21 (Diode), D22 (Diode), D23 (Diode), D24 (Diode), D25 (Diode), D26 (Diode), D27 (Diode), D28 (Diode), D29 (Diode), D30 (Diode), D31 (Diode), D32 (Diode), D33 (Diode), D34 (Diode), D35 (Diode), D36 (Diode), D37 (Diode), D38 (Diode), D39 (Diode), D40 (Diode), D41 (Diode), D42 (Diode), D43 (Diode), D44 (Diode), D45 (Diode), D46 (Diode), D47 (Diode), D48 (Diode), D49 (Diode), D50 (Diode), D51 (Diode), D52 (Diode), D53 (Diode), D54 (Diode), D55 (Diode), D56 (Diode), D57 (Diode), D58 (Diode), D59 (Diode), D60 (Diode), D61 (Diode), D62 (Diode), D63 (Diode), D64 (Diode), D65 (Diode), D66 (Diode), D67 (Diode), D68 (Diode), D69 (Diode), D70 (Diode), D71 (Diode), D72 (Diode), D73 (Diode), D74 (Diode), D75 (Diode), D76 (Diode), D77 (Diode), D78 (Diode), D79 (Diode), D80 (Diode), D81 (Diode), D82 (Diode), D83 (Diode), D84 (Diode), D85 (Diode), D86 (Diode), D87 (Diode), D88 (Diode), D89 (Diode), D90 (Diode), D91 (Diode), D92 (Diode), D93 (Diode), D94 (Diode), D95 (Diode), D96 (Diode), D97 (Diode), D98 (Diode), D99 (Diode), D100 (Diode).

PCB Front with Battery Holder Removed