



LimbLogic Prosthetist Instructions



WHAT'S IN THE BOX

Vacuum Pump*
Battery Charger*
Fob
Fob Battery
Fob Key Ring
Diagnostic Disc
Exhaust Port Drain Tube
Replacement Exhaust Hose and Muffler*
Thermoplastic Fabrication Kit or Lamination Fabrication Kit*
Patient Instructions
Prosthetist Instructions

**Quantity = 2 for bilateral kit*

This document provides instruction for the prosthetist in the installation and use of the system. A separate document, **LimbLogic Patient Instructions**, is included with each system and should be provided to the patient upon delivery of a prosthesis containing the LimbLogic.

The Vacuum Pump and fob included in this package are electronically keyed together and can be used only with each other.



There are no field-serviceable parts inside the Vacuum Pump. Opening the Vacuum Pump will void the warranty.



This pump is only designed to move air; use of Vaseline® or similar lubricating creams inside the socket will clog the pump. Do not allow foreign substances to be pulled through the Vacuum Pump. This may impair function of your vacuum system.



Do not allow acetone to contact the Vacuum Pump or fob.



LimbLogic is not intended to be used as the only means of attachment of prosthesis to patient.



All LimbLogic components have passed safety testing for use as medical devices. Radio enabled devices comply with United States and international guidelines for low power transceivers. If LimbLogic components will be used around safety critical devices such as pacemakers or defibrillators, consult the manufacturer for appropriate usage instructions. Consult the section on Regulatory Information for more information on safety and compliance.



LimbLogic is designed for use by a single patient only.

FCC NOTICE

Note:

This device complies with part 15 of the FCC Rules. Operation is subject to the following two conditions: (1) This device may not cause harmful interference, and (2) this device must accept any interference received, including interference that may cause undesired operation.

Changes or modifications not approved by Ohio Willow Wood Company may void the user's authority to operate this equipment.

Remarque:

Le présent appareil est conforme aux CNR d'Industrie Canada applicables aux appareils radio . L'exploitation est autorisée aux deux conditions suivantes: (1) l'appareil ne doit pas produire de brouillage, et (2) l'utilisateur de l'appareil doit accepter tout brouillage radioélectrique subi, même si le brouillage est susceptible d'en compromettre le fonctionnement.

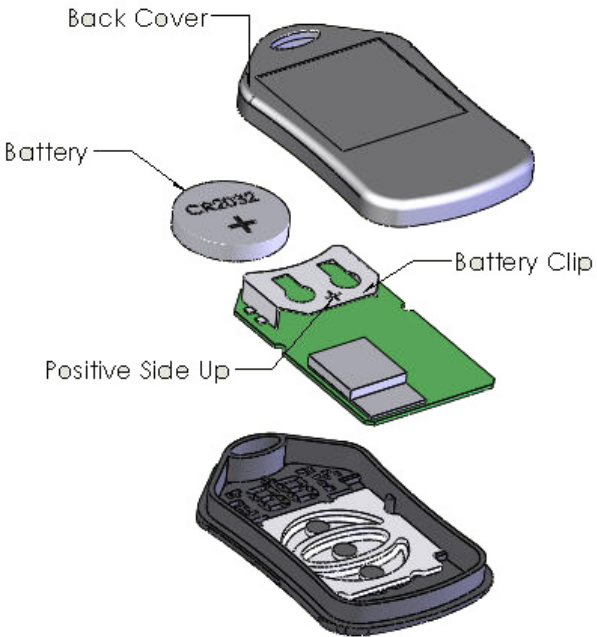
TABLE OF CONTENTS

	Page
Installing the Fob Battery	4
Quick-Start Guide	5
Fob Guide	5
Keys to Successful Use	6
Introduction.....	6
Vacuum System Function	6
Charging the Vacuum Pump Battery	7
Charging the Vacuum Pump Battery in a Vehicle	7
Turning On the Vacuum Pump.....	8
Turning Off the Vacuum Pump	8
Resetting the Vacuum Pump.....	8
Turning On the Fob	8
Changing Vacuum Set Point.....	9
Changing Regulation Mode.....	9
Bilateral Indicators.....	10
Changing the Prosthetist Settings	11
Detecting a Leak	12
Vacuum Pump Battery Status.....	12
Exposure to Water	12
Vacuum Plate/Pyramid	13
Exhaust Tube Muffler Cleaning	14
Flushing the System.....	14
Troubleshooting Guide	15
Diagnostic Disc	19
Warranty	20
Regulatory Information.....	21

INSTALLING THE FOB BATTERY

The fob uses a commercially available CR2032 coin cell battery. The battery will normally have to be replaced every 3 to 6 months depending upon how much the fob is used.

The fob case can be pried open using a small flat blade screwdriver, then snapped back together starting at the battery end and working back toward the opposite end.



After the battery is replaced, the system does a quick check by illuminating all the LED indicators. If all of the LEDs do not illuminate, then either the battery or the LEDs are not working.

QUICK-START GUIDE

1. Turn on the Vacuum Pump.

Press one time.
Pump will beep once.



2. Turn on the fob.



Press and hold center button until the yellow digits flash in a "chasing" pattern and then display the current vacuum level.
The pump will operate until the preselected vacuum level has been reached.

3. To enter Standby Mode:



Press for approximately 2 seconds.
The chasing pattern will be displayed, then the white Standby Indicator will light.



To resume vacuum regulation:



Press for approximately 2 seconds.
The chasing pattern will be displayed as the pump returns to Active Mode.

4. Turn off the Vacuum Pump.

Press one time.
Pump will beep twice.



FOB GUIDE

Vacuum Pump Battery Indicator

Solid green = 50-100% charged
Flashing green = 30-50% charged
Solid red = 20-30% charged
Flashing red = less than 20% charge remaining

Bilateral Indicators

Current Vacuum Level

Standby Indicator (White)

Leak Indicator (Red)

Up
Enter
Down



KEYS TO SUCCESSFUL USE

1. Fabricate a non-porous Total Surface Weight Bearing socket using either a LimbLogic 4-Hole Attachment Plate or LimbLogic Drop-In Adapter. Fabricating an airtight socket is critical to the proper operation of the system. Be sure to follow the fabrication instructions provided with the adapter.

Prior to delivering the prosthesis, you may want to use the Diagnostic Disc to confirm that there are no leaks in the system (refer to page 19).

2. Fully charge the Vacuum Pump. (Refer to “Charging the Vacuum Pump Battery” on page 7.)
3. Properly secure the fully charged Vacuum Pump to the socket, Vacuum Plate (LLV-01043), or Vacuum Pyramid (LLV-01044) with M6 flathead screws. Tighten the screws to 9 ft-lbs (12 Nm).
4. Have the patient don an Alpha® Liner, the prosthesis, and a LimbLogic Sleeve. Follow the donning instructions provided with the LimbLogic Sleeve.

INTRODUCTION

LimbLogic is a remote-controlled vacuum suspension system.

The Vacuum Pump is mounted inline on a prosthesis to allow for complete integration without the annoyances of tubes into the socket. LimbLogic operates

quietly and features “Set and Forget” monitoring, which means that the system monitors the level of vacuum in the socket to maintain a secure and comfortable fit.



The miniaturized LimbLogic fob provides the user with control and status information for the LimbLogic Vacuum System. The fob uses lights or digits to display the vacuum pump's current regulation mode, the battery level, the current vacuum level, and leak indicators. The vacuum level and range can be changed using the buttons located on the fob.

VACUUM SYSTEM FUNCTION

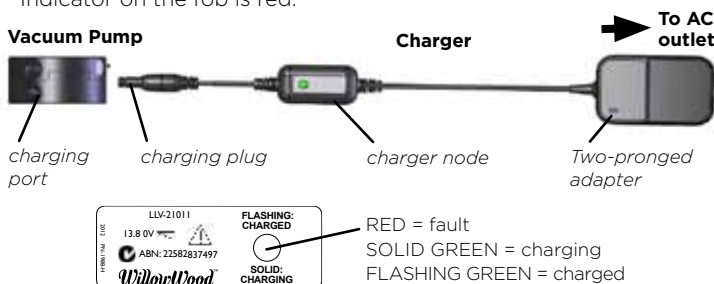
The system monitors the vacuum level and draws more vacuum as needed to maintain the level within a designated **Vacuum Range**. The desired vacuum level, also known as the **Vacuum Set Point**, is the upper limit of this range, and can be adjusted by the patient; however, the **Vacuum Set Point** is limited by the **User Maximum** setting.

The system is shipped with the **Vacuum Range** set at 6 inHg and the **User Maximum** set at 20 inHg, but if those settings are not suitable for your patient, you may adjust them as desired. The **User Maximum** cannot be set higher than the system maximum of 20 inHg.

The optimum vacuum setting is different for each amputee. Keep in mind that a higher vacuum level is not always better. Higher vacuum levels require that the Vacuum Pump use more power and will therefore discharge the battery faster.

CHARGING THE VACUUM PUMP BATTERY

The Vacuum Pump should be charged before it is used for the first time, at the end of each day of use, and when the Battery Indicator on the fob is red.



1. Insert the charging plug all the way into the charging port.
2. Plug the charger into a power outlet. The blue light on the two-pronged adapter will light. The battery indicator on the fob will flash alternately between red and green. If the battery indicator does not light, make sure you have inserted the charging plug all the way into the port.

If the light on the charger node is red, reset the charger by unplugging it from the wall and plugging it back in.

While charging is in progress, the light on the charger node will be solid green.

3. When charging is complete, the light on the charger node will flash green. Disconnect the charger from the Vacuum Pump and from the power outlet.

When you are ready for the pump to begin regulating the vacuum, either turn on the fob (refer to page 8) or press the **on/off button** on the Vacuum Pump. The pump will operate until the preselected vacuum level is reached.

Note: if the pump has just been unplugged from the charger, it will be in Standby Mode (refer to page 9). To resume vacuum regulation, press the on/off button one time. To turn the pump off, press the on/off button again.



Use ONLY a WillowWood charger. Use of any other charger may result in damage to the Vacuum Pump or the charger or both.

With normal usage, the rechargeable battery should last for the life of the product.



Do not use the charger near water. The charger is not waterproof.

CHARGING THE VACUUM PUMP BATTERY IN A VEHICLE

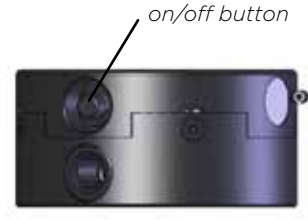
To use a vehicle's power to charge the Vacuum Pump, you must purchase a Power Inverter rated at 75 Watts or less to convert the vehicle's 12V DC power to 120V AC. Examples of acceptable Power Inverters include the Digital Concepts™ 75 Watt Portable Power Inverter (available from general retailers) and the Enercell™ 75 Watt Power Inverter (available from Radio Shack®; item number 22-133).

1. Plug the Power Inverter into the vehicle's 12V DC socket.
2. Connect the charger to the Vacuum Pump.
3. Plug the charger's two-pronged adapter into the Power Inverter's three-pronged receptacle.



Do not operate the charger above 41°C (105°F).

TURNING ON THE VACUUM PUMP



Press the **on/off button** on the Vacuum Pump one time.

TURNING OFF THE VACUUM PUMP

Press the **on/off button** on the Vacuum Pump and hold for 1 second. The Vacuum Pump will beep twice.

Note: if the pump has just been unplugged from the charger, it will be in Standby Mode (refer to page 9). To resume vacuum regulation, press the on/off button one time. To turn the pump off, press the on/off button again.

RESETTING THE VACUUM PUMP

It is possible for a large static discharge to interrupt normal operation. Should this occur, press the **on/off button** on the Vacuum Pump and hold for at least 12 seconds until the unit beeps.

TURNING ON THE FOB



Make sure the pump is on.

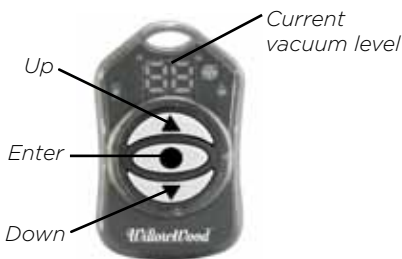
Press and hold the **Enter** (center) button for approximately 2 seconds until the yellow digits flash in a circular “chasing” pattern. The chasing pattern indicates the fob is attempting to communicate with the pump.

When the fob connects to the pump, the current vacuum level will be displayed in the center. A connected fob will shut off after one minute of non-use.

If the pump is off or fails to connect to the fob, the chasing pattern will end after 6 seconds, and all fob LEDs will turn off.

For bilateral systems, if the fob cannot establish communications with the first pump, the fob will attempt to connect to the second pump, using the same steps as above. If communication cannot be established with either pump, the fob will shut down.

CHANGING VACUUM SET POINT



Make sure the fob is on and displaying the current vacuum level in the yellow digits.

Press the **Up** or **Down** button for 1 second until the yellow digits flash to indicate that the **Vacuum Set Point** is being changed.

Adjust the **Vacuum Set Point** as follows:

- Press the **Up** or **Down** button repeatedly to adjust the Vacuum Set Point by one number at a time.
- or
- Press and hold the **Up** or **Down** button until the desired Vacuum Set Point is displayed.

Press the **Enter** button to apply the changes. The “chasing” pattern will be displayed while the setting is being applied. If the **Enter** button is not pressed, the settings will not be applied, and the fob will shut off due to inactivity in 60 seconds.

CHANGING REGULATION MODE

Make sure the fob is on and displaying the current vacuum level.

When the pump is on, it has two regulation modes:

Active Mode: Vacuum Pump activates as needed to maintain the vacuum level

Standby Mode: allows you to temporarily suspend vacuum regulation

Press and hold the **Enter** button to toggle the vacuum pump from one mode to the other. The “chasing” pattern will be displayed while the change in mode is being applied.



The white **Standby indicator** will illuminate when the Vacuum Pump is in **Standby Mode**. The fob will continue to display vacuum levels while in **Standby Mode**.

When the white **Standby Indicator** is not illuminated, the pump is in **Active Mode**.

If the pump detects a leak, the red **Leak Indicator** will illuminate, the regulation mode will change to **Standby Mode**, and the pump will beep 10 times rapidly. The pump will repeat this every 30 seconds for 6 minutes unless acknowledged by pressing the **on/off button** on the pump.

To return to **Active Mode**, press and hold the **Enter** button.



BILATERAL INDICATORS



If a fob is configured to support bilateral Vacuum Pumps, one of the two white indicators at the top of the fob will illuminate to show which pump (left or right) is being controlled.

To switch the fob from controlling one pump to the other, press and hold the **Up** and **Down** buttons together for approximately 1 second. The “chasing” pattern will be displayed, and the indicator light will switch from one side to the other while communication with the other pump is being established.

If communication is established, the displays and controls are similar to those for a unilateral system.

If no communication can be established, the fob will return to controlling the pump that it controlled prior to the attempted switch.

CHANGING THE PROSTHETIST SETTINGS

The system is shipped with the **User Maximum** set at 20 inHg and the **Vacuum Range** set at 6 inHg. If these settings are not sufficient for your patient, you may adjust them as follows:

Make sure the pump and fob are both turned on and are communicating with each other. Quickly press the **Enter** button on the fob three times to enable the Prosthetist Settings function. The three presses must be within approximately two seconds of each other.

The display will alternate between two quick flashes of this symbol and the current value for the **User Maximum**.



Press the **Up** or **Down** buttons to adjust the **User Maximum**. The digits will flash to indicate that the **User Maximum** is being changed.

- *The user will not be able to increase the **Vacuum Set Point** above the **User Maximum**.*
- *The **User Maximum** cannot be set higher than 20 inHg.*

Press the **Enter** button to apply the new **User Maximum** setting and advance to the next setting.

The display will alternate between two quick flashes of this symbol and the current value for the **Vacuum Range**.



Press the **Up** or **Down** buttons to adjust the **Vacuum Range**. The digits will flash to indicate that the **Vacuum Range** is being changed.

- *The **Vacuum Range** is how much the current vacuum level can fall below the Vacuum Set Point before the pump activates.*
- *The **Vacuum Range** cannot be set lower than 4 inHg.*


Press the **Enter** button to apply the new **Vacuum Range** setting.

The “chasing” pattern will be displayed while the setting is being applied. The fob will then return to displaying the current vacuum level.

NOTE: Adjusting the User Maximum and Vacuum Range Settings can affect the Vacuum Level setting. After changing either the User Maximum or Vacuum Range settings, please check to ensure the Vacuum Level is set to the desired level.

DETECTING A LEAK



If the **Vacuum Pump** detects a leak, the red **Leak Indicator**  will illuminate, and the system will enter **Standby Mode**.

At this time, the pump will make 10 short beeps. This will repeat every 30 seconds for 6 minutes unless acknowledged by pressing the **on/off button** on the pump.

If the **Leak Indicator** appears when the patient initially dons the prosthesis, the patient should restart the pump.

If the **Leak Indicator** appears frequently while the patient is walking, use the Diagnostic Disc to determine the source of the leak (refer to page 19).

To resume automatic vacuum regulation after a leak has been detected, press the **on/off button** on the Vacuum Pump one time or press the **Enter** button on the fob.

VACUUM PUMP BATTERY STATUS



The Battery Indicator flashes alternatively between red and green when the Vacuum Pump battery is charging.

The level of charge is indicated as follows:

- Solid green: Vacuum Pump battery is between 50% and 100% charged.
- Flashing green: Vacuum Pump battery is between 30% and 50% charged.
- Solid red: Vacuum Pump battery is between 20% and 30% charged.
- Flashing red: Vacuum Pump battery is less than 20% charged. The battery should be charged when possible. The pump will shut down when the battery level reaches 0%.
- At 10% the pump will start to beep 3 times every 30 seconds. This will repeat for 6 minutes unless acknowledged by pressing the **on/off button** on the pump.

EXPOSURE TO WATER

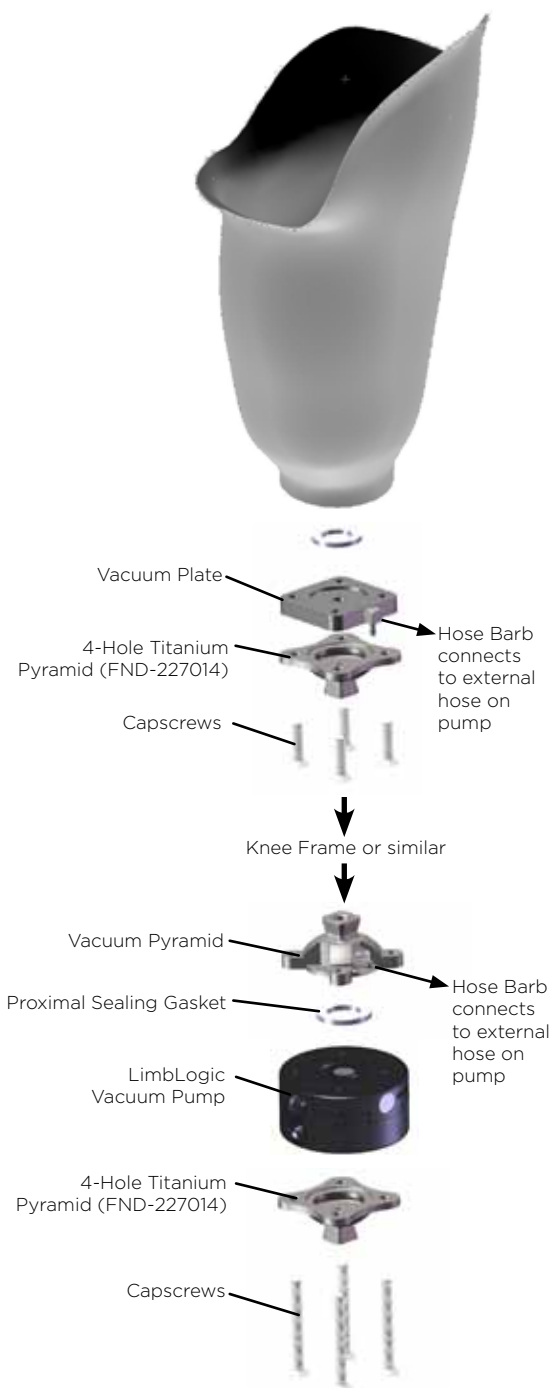
The Vacuum Pump is waterproof in fresh water up to a depth of 10 feet or 3 meters for up to 12 hours. The Vacuum Pump should not be submersed in salt water or any other corrosive liquids. Be sure to dry off the Vacuum Pump if it is exposed to rain or other moisture.

The fob and charger should not be exposed to water or other liquids.

VACUUM PLATE/PYRAMID

The Vacuum Plate (LLV-01043) and Vacuum Pyramid (LLV-01044) can be used for attaching the Vacuum Pump in line with other endoskeletal components, instead of attaching the pump directly to the socket.

Use the Vacuum Plate and Vacuum Pyramid ONLY in the configurations shown here.



EXHAUST TUBE MUFFLER CLEANING

Using a flat blade screwdriver, remove the Exhaust Tube Fitting from the pump housing. Do not lose the o-ring from the fitting.

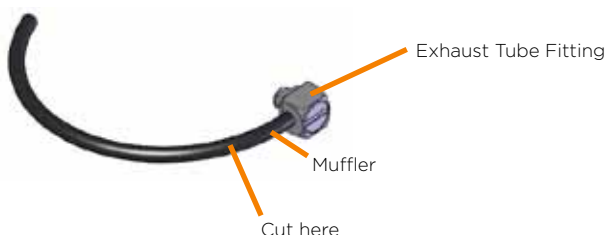


Clear the clog in the tube by running water or by gently blowing compressed air through the tube.

If the clog cannot be cleared, purchase a replacement Exhaust Tube from WillowWood (LLV-21080).

If the pump must be used before the replacement tube can be installed:

1. Remove the existing tube from the Exhaust Tube Fitting.
2. Cut the existing tube just past the Muffler.
3. Connect the Exhaust Tube Fitting to the section of tube that does not have the Muffler. The pump will function normally, but at a slightly higher noise level.



FLUSHING THE SYSTEM

In some situations it may become necessary to flush the system. Using a flat blade screwdriver, remove the Exhaust Tube Fitting from the pump housing. Do not lose the o-ring from the fitting. Install the drain tube and flush the system with alcohol.

TROUBLESHOOTING GUIDE

Problem	Action
The pump does not beep when the on/off button is pressed and the charger is not connected to the pump.	<ul style="list-style-type: none"> • The pump's internal battery may not be charged. Charge the pump with the charger for at least 30 minutes and try again. • The on/off button could be damaged. Verify that the rubber boot is intact and hasn't been torn from impact. Contact WillowWood if the switch needs to be replaced. • The pump may have been exposed to a large static charge. Press and hold the on/off button on the pump until you hear a beep (approximately 12 seconds).
Pressing the pump button does not start the pump.	<ul style="list-style-type: none"> • The pump's internal battery may not be charged. Charge the pump with the charger for at least 30 minutes and try again. • The pump may have been exposed to a large static charge. Press and hold the on/off button on the pump until you hear a beep (approximately 12 seconds). • The pump may be partially stalled. Refer to the "Pump Stall" error code information on page 18.
Pump battery does not maintain charge for a full day.	<ul style="list-style-type: none"> • Ensure that the system is properly sealed. • Ensure that the battery has been charged for at least 4 hours. • The pump may have been exposed to a large static charge. Press and hold the on/off button on the pump until you hear a beep (approximately 12 seconds). • Ensure that your socket does not leak excessively.
The pump makes a "zip zip zip" sound as it controls the vacuum.	The system is leaking, but not yet at a rate that triggers the Leak Detector light. Wash the sealing sleeve of debris around the sealing surface, and remove any dirt or debris from the proximal sealing gasket and the pump's sealing surface. If the leak is still present, use the Diagnostic Disc to determine the source of the leak.
Pressing the center button of the fob does not cause the yellow LEDs to light in a "chasing" pattern.	The battery is likely dead and must be replaced per the instructions on page 4.

continued on next page

Problem	Action
<p>The fob does not communicate with the pump. The “chasing” pattern of LEDs ends after 6 seconds, and the LEDs turn off.</p>	<ul style="list-style-type: none"> • Wait one minute for the fob screen to turn off. Make sure the pump is on by pressing the on/off button and verify that the pump beeps once. Listen for about 30 seconds to make sure that the pump doesn't quickly beep twice and turn off, which indicates a battery problem. Press the fob center button again. • The fob may be too close or too far from the pump. Place the fob about 2 feet away from the pump, and press the fob center button again. • The pump's internal battery may not be charged. Charge the pump with the charger for at least 30 minutes and try again. • The pump may have been exposed to a large static charge. Press and hold the on/off button on the pump until you hear a beep (approximately 12 seconds). • Does the patient have the correct fob-pump combination? The fob and pump are electronically matched during the production process. Contact Willow-Wood with the serial number of the fob and serial number of the pump to verify that the set is matched.
<p>The blue LED light on the charger does not illuminate when plugged into the wall.</p>	<ul style="list-style-type: none"> • The AC electricity to the wall outlet may not be turned on. Try plugging the charger into a different non-switched wall outlet or in another room. • The configurable prong may not be seated properly in the back of the charger's two-pronged adapter. Unplug the charger from the AC outlet. Remove the charger's prong using the sliding latch on the back of the adapter. Verify that the metal contacts are springy and are not completely flat against the adapter. Re-install the plug prongs. • If the problem persists, contact WillowWood.
<p>The LED on the charger node does not light or blink when the charger is plugged into vacuum pump and AC outlet.</p>	<p>Contact WillowWood.</p>
<p>The LED on the charger node is red.</p>	<p>Reset the charger by unplugging it from the wall and plugging it back in.</p>

continued on next page

Problem	Action
The pump runs repeatedly.	Using a flat blade screwdriver, remove the Exhaust Tube Fitting from the pump housing. Do not lose the o-ring from the fitting. Install the drain tube and flush the system with alcohol.
The pump beeps but does not run.	The Muffler on the Exhaust Tube may be clogged. Clean the Muffler as described on page 14.

Error Codes

If the vacuum pump’s controller detects an error from which it cannot recover, the fob display will alternate between the letters “Er” and a two-digit error code. Refer to the chart below for the type of error indicated by each code and the corresponding action.

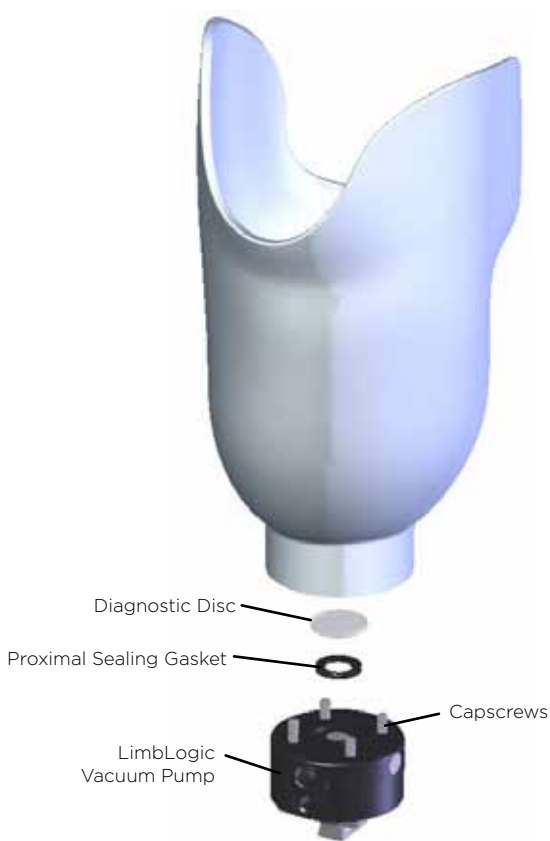
Problem	Description	Cause	Action
01	Pump stall	Possibly debris or lubricant stuck in pump	Reset the pump by pressing and holding the pump’s on/off button for approximately 12 seconds until you hear a beep, then flush the system with alcohol (refer to Flushing the System on page 14).
02	Temp out of range	Pump temperature less than -20° C or greater than 70° C	Allow pump temperature to return to operating range, then reset the pump by pressing and holding the pump’s on/off button for approximately 12 seconds until you hear a beep.
03	Motion fail	Motion sensor failure	Return to Willow-Wood for repair.
04	ADC fail	Analog Digital Converter failure	Return to Willow-Wood for repair.
05	Memory	Memory failure	Reset the pump by pressing and holding the pump’s on/off button for approximately 12 seconds until you hear a beep. If problem persists, return to Willow-Wood for repair.
06	Radio	BLE Radio failure	Return to Willow-Wood for repair.
07	Vacuum	Vacuum Sensor failure	Return to Willow-Wood for repair.
08	Battery	Battery monitoring circuit failure	Return to Willow-Wood for repair.

DIAGNOSTIC DISC

The Diagnostic Disc included with the LimbLogic System can be used to test the vacuum pump as follows:

1. Remove the protective tape from the Diagnostic Disc.
2. Place the Proximal Gasket in the recess on top of the pump.
3. Place the Diagnostic Disc on top of the Proximal Gasket.
4. Attach the pump with the Diagnostic Disc and Proximal Gasket to the socket. Be sure to tighten the bolts evenly; tightening them more on one side than the other may result in a leak.
5. Start the pump and watch the display on the fob:
 - If the vacuum level drops, the pump has a leak.
 - If the vacuum level holds steady, the pump is functioning correctly.

Remove the Diagnostic Disc for normal operation of the system.



The fob and the charger are not water resistant. Submersion of the fob or the charger will void the warranty.

WARRANTY

The warranty for the LimbLogic is two years from invoice date, provided that the system is selected according to the following criteria:

Note: The weights listed below are adjusted body weights. Adjusted body weight is defined as the weight of the amputee plus any loads normally or routinely carried by the amputee.

Level 1	Level 2	Level 3	Level 4
350 lbs	350 lbs	350 lbs	300 lbs
160 kg	160 kg	160 kg	135 kg

Level 4: Has the ability or potential for prosthetic ambulation that exceeds basic ambulation skills, exhibiting high impact, stress, or energy levels. Typical of the prosthetic demands of the child, active adult, or athlete.

Use of LimbLogic for amputees who do not meet the above criteria or who engage in extremely high and abusive activities is against WillowWood's recommendations and will void the two-year warranty. "Extremely high and abusive activities" are defined as activities such as skydiving, karate, and judo; activities that could result in injury to an individual's natural limbs; and activities that expose the prosthesis to corrosives such as salt water.

WARRANTY DISCLAIMER

WillowWood warrants that each product manufactured will, at the time of delivery, be of workmanlike quality and substantially free of defects. WILLOWWOOD MAKES NO OTHER WARRANTY, IMPLIED, OR EXPRESSED, AND MAKES NO WARRANTY OF MERCHANTABILITY OR FITNESS FOR A PARTICULAR PURPOSE. This warranty shall terminate immediately upon an action to combine our products with other materials or in any manner to change the nature of our products. The sole remedy is replacement of the products or credit for the products. WillowWood's liability shall not exceed the purchase price of the product. WillowWood shall not be liable for any indirect, incidental, or consequential damage.

WILLOW WOOD RETENTION OF RIGHTS

WillowWood retains all intellectual property rights reflected or incorporated in its physical products, regardless of the transfer of the physical products to another party or parties.

There are no field-serviceable parts inside the Vacuum Pump. Opening the Vacuum Pump will void the warranty.

REGULATORY INFORMATION

Return this product to the factory for proper disposal.

LimbLogic Fob



This product contains a user replaceable lithium battery. Replace only with user replaceable CR2032 batteries. Discard of discharged batteries in accordance with local regulations. Observe polarity markings on the battery and the fob housing when replacing the battery.



This product complies with IEC 60601-1:1998 +A1:1991 +A2 1995, EN 300 440-1 V1.3.1:2001EMC, EN 301 489-1 V1.7.1:2006, EN 301 489-3 V1.4.1:2002 EMC, and EN55022:1998/A1:2000/A2:2003.



IEC 60601-1 Classifications:

Internally powered

Degree of protection against electrical shock –
Type BF Applied Part



In addition to the above compliances, this device complies with EN55022:1998/A1:2000/A2:2003 Class B ITE emissions requirements and all requirements for Low Interference Potential Devices (LIPD) and compliance with the requirements for a General User Licence (GUL).

LimbLogic Vacuum Pump



This product contains a rechargeable Lithium Ion Battery. Use ONLY a Willow Wood charger. Use of other chargers may result in harm to the device, the user, or both and void the warranty.

Blocking or plugging the exhaust port of the vacuum control assembly will prevent proper operation of the vacuum pump.

The LimbLogic Vacuum Pump is intended for use on a single patient. Use of the system with multiple patients could lead to cross contamination between patients.

The LimbLogic vacuum system has been designed for and clinically tested as a suspension aid. It has not been clinically tested for wound healing or other uses. WillowWood does not currently support the use of the LimbLogic for uses other than suspension.

Use only the bolts supplied by WillowWood. All testing for the LimbLogic vacuum system has been tested with the bolts included with the system. Use of other bolts could result in mechanical failure.



This product complies with IEC 60601-1:1998 +A1:1991 +A2 1995, EN 300 440-1 V1.3.1:2001EMC, EN 301 489-1 V1.7.1:2006, EN 301 489-3 V1.4.1:2002 EMC, EN55022:1998/A1:2000/A2:2003, and CEI/IEC 60529:1989+A1:1999 rating IPX8. (3 meters for 12 hours in fresh water).



IEC 60601-1 Classifications:

Internally powered/Powered from Class II Power Supply
Degree of protection against electrical shock –
Type BF Applied Part

This product complies with the requirements of ISO 10328.



In addition to the above compliances, this device complies with EN55022:1998/A1:2000/A2:2003 Class B ITE emissions requirements and all requirements for Low Interference Potential Devices (LIPD) and compliance with the requirements for a General User Licence (GUL).

LimbLogic Battery Charger



This product is designed to work with WillowWood products specifically designed for its use. Use WillowWood charger part number LLV-21011. Use with other products may result in harm to the device, the user, or both and void the warranty. Refer to product manuals to verify compatibility with this charger before attempting to use this charger with the product.

Electrical Ratings:

Rated input: 100 – 240 Vac, 0.6 A, 47 – 63 Hz

Rated output: 13.8 Vdc, 2.6 A



This product complies with IEC 60601-1:1998 +A1:1991 +A2 1995.

FCC AND IC COMPLIANCE INFORMATION (FOR THE FOB AND THE VACUUM PUMP)

Note:

This equipment contains:

FCC ID XDULE40-S2

IC: 8456A-LE4S2)

Contient le module d'émission

IC: 8456A-LE4S2

FOR THE CHARGER

This device complies with Part 15 of the FCC Rules. Operation is subject to the following two conditions:

1. This device may not cause harmful interference, and
2. This device must accept any interference received, including interference that may cause undesired operation.

Radio Frequency Interference Statement

This is a Class B product. In a domestic environment, this product may cause radio interference in which case the user may be required to take adequate measures.

Note:

This equipment has been tested and found to comply with the limits for a Class B digital device, pursuant to part 15 of the FCC Rules. These limits are designed to provide reasonable protection against harmful interference in a residential installation.

This equipment generates, uses and can radiate radio frequency energy and, if not installed and used in accordance with the instructions, may cause harmful interference to radio communications. However, there is no guarantee that interference will not occur in a particular installation. If this equipment does cause harmful interference to radio or television reception, which can be determined by turning the equipment off and on, the user is encouraged to try to correct the interference by one or more of the following measures:

- Reorient or relocate the receiving antenna.
- Increase the separation between the equipment and receiver.
- Connect the equipment into an outlet on a circuit different from that to which the receiver is connected.
- Consult the dealer or an experienced radio/ TV technician for help.

This digital apparatus does not exceed the Class B limits for radio noise emissions from digital apparatus set out in the Radio Interference Regulations of the Canadian Department of Communications.

REMARQUE:

Cet équipement a été testé et déclaré conforme aux les règles de RSS-220. Ces limites ont pour objectif de fournir une protection raisonnable contre les interférences nuisibles dans une installation résidentielle. Cet équipement génère, utilise et rayonne de l'énergie de fréquence radio et peut nuire aux communications radio s'il n'est pas installé et utilisé en accord avec le mode d'emploi. Cependant, il n'est pas garanti que des interférences surviennent dans une installation particulière. Si l'équipement cause des interférences nuisibles à la réception radio ou télévision, qui peuvent être localisées en allumant ou en éteignant l'équipement, l'utilisateur est encouragé à corriger les interférences en employant une ou plusieurs des mesures suivantes:

- Réorienter ou déplacer l'antenne de réception.
- Séparer davantage l'équipement et le récepteur.
- Connecter l'équipement à une prise de courant située sur un circuit différent de celui du récepteur.
- Demandez assistance à un revendeur ou un technicien expérimenté dans le domaine radio/TV

Le présent appareil numérique n'émet pas de bruits radioélectriques dépassant les limites applicables aux appareils numériques de la classe B prescrites dans le Règlement sur le brouillage radioélectrique édicté par le ministère des Communications du Canada.

ELECTROMAGNETIC COMPATIBILITY

Medical electrical equipment needs special precautions regarding electromagnetic compatibility (EMC) and needs to be installed and put into service according to the EMC information provided in this user manual. Portable and mobile radio frequency (RF) communications equipment can affect medical electrical equipment.

Guidance and Manufacturer's Declaration - Electromagnetic Emissions

LimbLogic is intended for use in the electromagnetic environments specified below. The customer or the user of the LimbLogic should assure it is used in such an environment.

Emissions Test	Compliance	Guidance
RF Emissions CISPR 11	Group 2	The LLVS must emit electro-magnetic energy in order to perform its intended function. Nearby electronic equipment may be affected.
RF Emissions CISPR 11	Class B	Suitable for use in all establishments, including domestic establishments and those directly connected to the public low-voltage power supply network that supplies buildings used for domestic purposes.
Harmonic Emissions IEC 61000-3-2	N/A	
Voltage Fluctuations/ Flicker Emissions IEC 61000-3-3	N/A	

Emissions from this device comply with the recommendations of the ICNIRP's "Guidelines for Limiting Exposure to Time-Varying Electric and Magnetic Fields (1 Hz - 100 kHz). Health Physics 99(6):818-836; 2010.

**Guidance and Manufacturer's Declaration -
Electromagnetic Immunity**


LimbLogic is intended for use in the electromagnetic environments specified below. The customer or the user of the LimbLogic should assure it is used in such an environment.

Immunity Test	IEC 60601 Test Level	Compliance Level	Guidance
Electrostatic Discharge IEC 61000-4-2	± 6 kV Contact ± 8 kV Air	± 6 kV Contact ± 8 kV Air	Floors should be wood, concrete, or ceramic tile. If floors are covered with synthetic material, the relative humidity should be at least 30%.
Electrical Fast Transient/Burst IEC 61000-4-4	± 2 kV on Power Supply Lines ± 1 kV on Input/Output Lines	± 2 kV on Power Supply Lines ± 1 kV on Input/ Output Lines	Mains power quality should be that of a typical commercial or hospital environment.
Surge IEC 61000-4-5	± 1 kV Differential Mode ± 2 kV Common Mode	± 1 kV Differential Mode ± 2 kV Common Mode	Mains power quality should be that of a typical commercial or hospital environment.
Voltage Dips, Short Interrupts, & Variations on Power Supply Lines IEC 61000-4-11	< 5% UT (95% dip in UT for 0.5 cycles) < 40% UT (60% dip in UT for 5 cycles) < 70% UT (30% dip in UT for 25 cycles)	< 5% UT (95% dip in UT for 0.5 cycles) < 40% UT (60% dip in UT for 5 cycles) < 70% UT (30% dip in UT for 25 cycles)	Mains power quality should be that of a typical commercial or hospital environment. If the user of the LimbLogic requires continued operation during mains interruptions, it is recommended that the LimbLogic be powered from an uninterruptible power supply or a battery.
Power Frequency Magnetic Fields IEC 61000-4-8	3 A/m	3 A/m	Power frequency magnetic fields should be at levels characteristic of a typical location in a typical commercial or hospital environment.

NOTE: UT is the a.c. mains voltage prior to application of the test level.

Guidance and Manufacturer's Declaration - Electromagnetic Immunity

LimbLogic is intended for use in the electromagnetic environments specified below. The customer or the user of the LimbLogic should assure it is used in such an environment.

Immunity Test	IEC 60601 Test Level	Compliance Level	Guidance
Conducted RF IEC 61000-4-6	3 Vrms 150 kHz to 80 MHz	3 Vrms	<p>Portable and mobile RF communications equipment should be used no closer to any part of the LimbLogic, including cables, than the recommended separation distance calculated from the equation applicable to the frequency of the transmitter.</p> <p>Recommended separation distance</p> $d = 1,2\sqrt{P}$ $d = 1,2\sqrt{P} \quad 80 \text{ MHz to } 800 \text{ MHz}$ $d = 2,3\sqrt{P} \quad 800 \text{ MHz to } 2.5 \text{ GHz}$ <p>Where P is the maximum output power rating of the transmitter in watts (W) according to the transmitter manufacturer and d is the recommended separation distance in meters (m).</p> <p>Field strengths from fixed RF transmitters, as determined by an electromagnetic site survey,^a should be less than the compliance level in each frequency range.^b</p> <p>Interference may occur in the vicinity of equipment marked with the following symbol: </p>
Radiated RF IEC 61000-4-3	3 Vrms	3 V/m	

NOTE 1 At 80 MHz and 800 MHz, the higher frequency range applies.

NOTE 2 These guidelines may not apply in all situations. Electromagnetic propagation is affected by absorption and reflection from structures, objects and people.

- a Field strengths from fixed transmitters, such as base stations for radio (cellular/cordless) telephones and land mobile radios, amateur radio, AM and FM radio broadcast and TV broadcast cannot be predicted theoretically with accuracy. To assess the electromagnetic environment due to fixed RF transmitters, an electromagnetic site survey should be considered. If the measured field strength in the location in which the LimbLogic is used exceeds the applicable RF compliance level above, the LimbLogic should be observed to verify normal operation. If abnormal performance is observed, additional measures may be necessary, such as reorienting or relocating the LimbLogic.
- b Over the frequency range 150 kHz to 80 MHz, field strengths should be less than [V1] V/m.

Recommended separation distances between portable and mobile RF communications equipment and the LimbLogic

LimbLogic is intended for use in an electromagnetic environment in which radiated RF disturbances are controlled. The customer or the user of LimbLogic can help prevent electromagnetic interference by maintaining a minimum distance between portable and mobile RF communications equipment (transmitters) and the LimbLogic as recommended below, according to the maximum output power of the communications equipment.

Rated maximum output power of transmitter	Separation distance according to frequency of transmitter (m)	
	150 kHz to 80 MHz $d = 1,2\sqrt{P}$	80 MHz to 800 MHz $d = 1,2\sqrt{P}$
0.01	0,12	0,12
0.1	0,38	0,38
1	1,2	1,2
10	3,8	3,8
100	12	12

For transmitters rated at a maximum output power not listed above, the recommended separation distance d in meters (m) can be estimated using the equation applicable to the frequency of the transmitter, where P is the maximum output power rating of the transmitter in watts (W) according to the transmitter manufacturer.

- NOTE 1 At 80 MHz and 800 MHz, the separation distance for the higher frequency range applies.
- NOTE 2 These guidelines may not apply in all situations. Electromagnetic propagation is affected by absorption and reflection from structures, objects and people.

USER PROFILE

Prosthetist user

The LLVS system is intended to be used for assembly of prosthetic devices by a certified prosthetist or prosthetic technician.

Patient user

The LLVS system is intended for use by patients meeting the following conditions.

- Age: Any. Determined by clinician's evaluation of patient competence and health.
- Weight: (Body weight plus any loads normally or routinely carried cannot exceed these weight limits.)
 - <350 lb (160 kg) for U.S. Activity K Level 2 or 3
 - <300 lb (136 kg) for U.S. Activity K Level 4
- Health: Activity Level K2-K4
- Nationality: Any
- Mentally competent to operate system as judged by prosthetist.

PERFORMANCE CHARACTERISTICS

Capabilities:

- 2 year warranted service life
- Vacuum setting up to 20 inches of mercury.
- Indoor & Outdoor usage
- The Limb Logic Controller (pump) is waterproof in fresh water to a depth of 3 meters (10 feet) for up to 12 hours at a time.
- Operating temperature range: 0 °C to +50 °C
- Transportation and storage temperature range: -20 °C to +50 °C
- Humidity range: 10 % to 90 % RH, non condensing
- Transportation and storage humidity range:
 - 0 % to 100 % RH, non condensing
- Altitude range: 0 to 5500 feet
- Transportation and storage altitude range: -500 to 20,000 feet

Restrictions:

- LLVS must not be used in salt water or any other corrosive environment.
- At temperatures below freezing, condensation will form and freeze in the pump preventing further operation until warmed.
- The hand-held fob, communicator, and charger should not be exposed to water.
- Frequency of use: Daily for 16 hours / day or as needed.

PHYSICAL MEASUREMENTS

Module	Dimensions (mm)	Weight (gms)
Fob with Battery	38L x 31W x 8H	17
Pump	36H x 74DIA	231
Charger Wall Transformer	86L x 56W x 37H	261

WillowWood[®]

The Ohio Willow Wood Company
15441 Scioto Darby Road
Mt. Sterling, OH 43143
phone 740.869.3377 / 800.848.4930
fax 740.869.4374 www.willowwoodco.com



Ohio Willow Wood Company B.V.
Keizersgracht 62/64
1015 CS Amsterdam
The Netherlands

