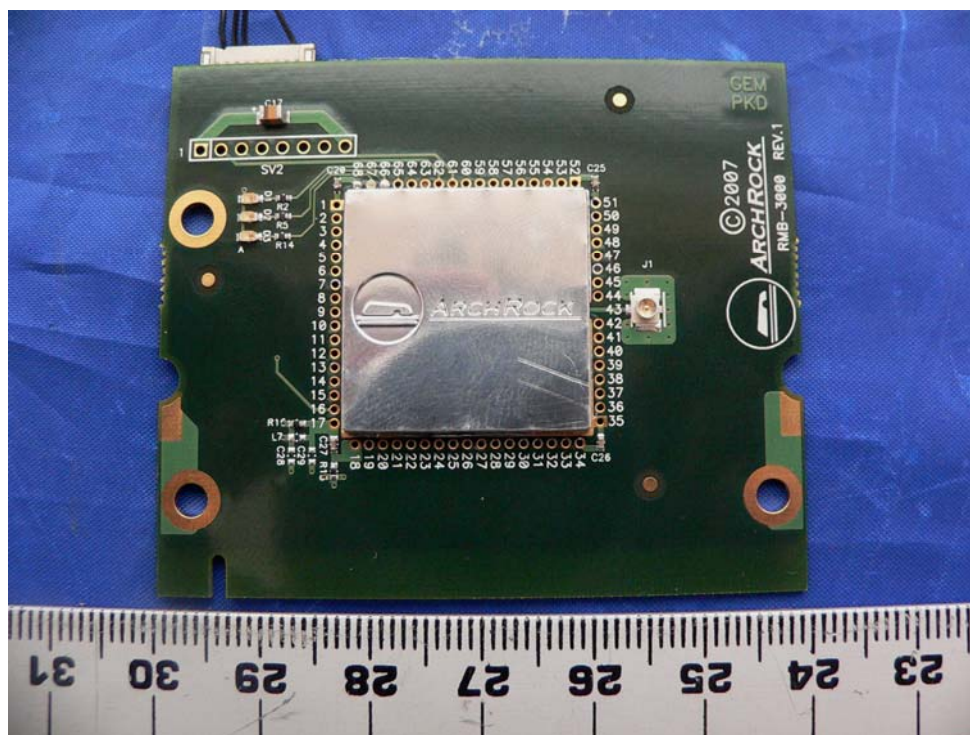
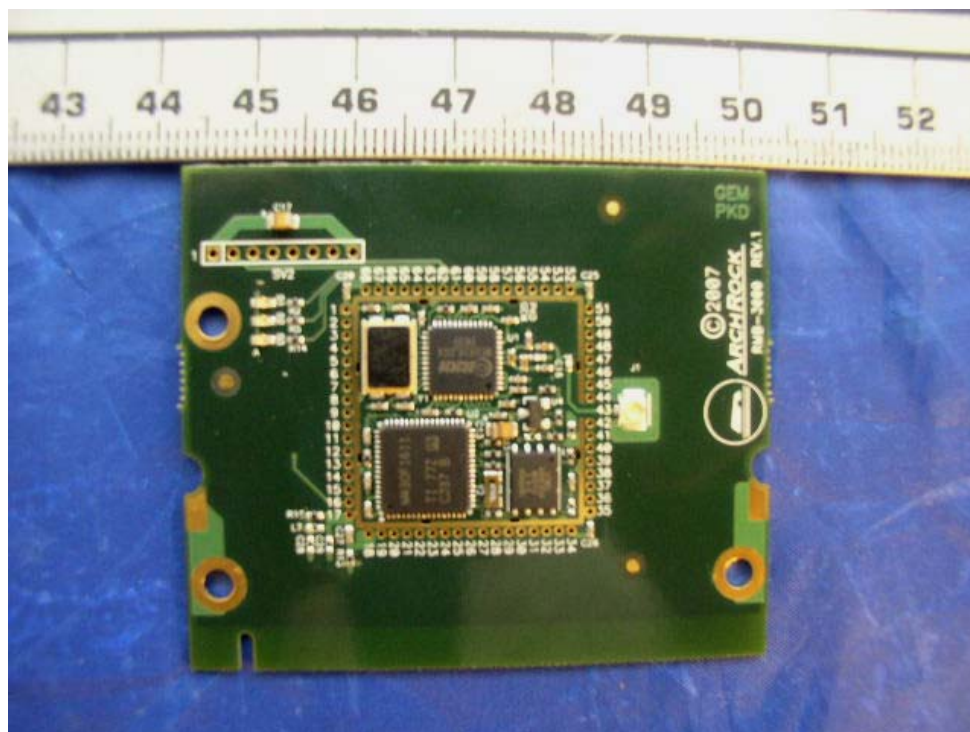


## 11 EXHIBIT C - EUT PHOTOGRAPHS

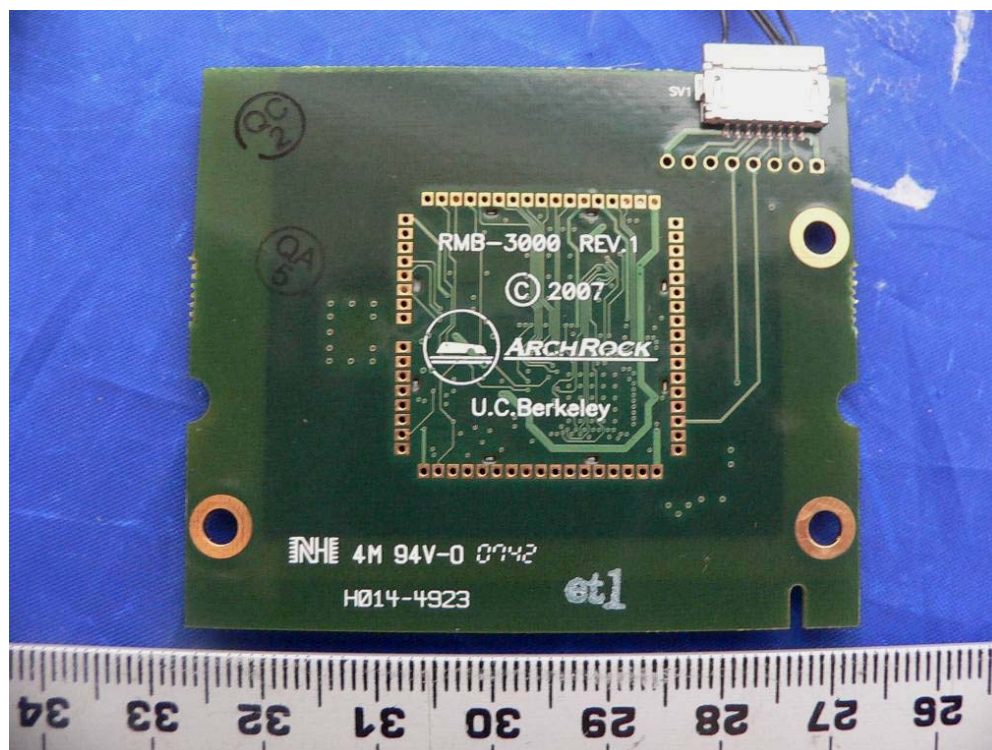
### 11.1 EUT Side 1 View



### 11.2 EUT Side 1 View (RF Shielding Removed)



### 11.3 EUT Side 2 View



### 11.4 EUT AC/DC Adapter

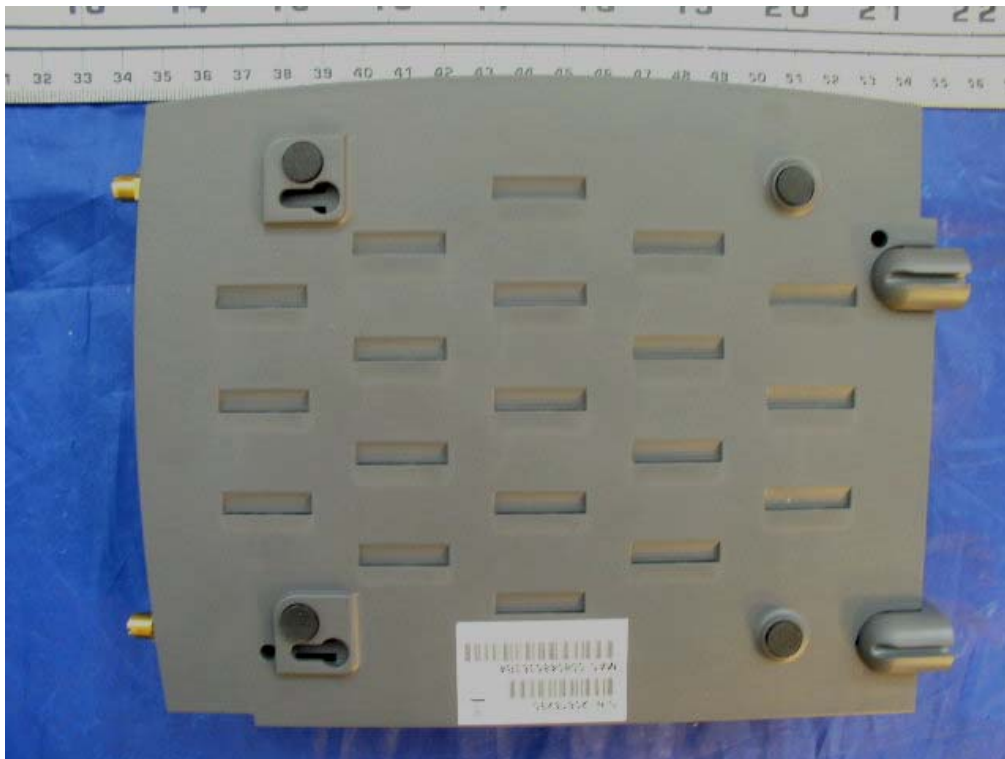




### 11.5 Host Device Front Side View



### 11.6 Host Device Back Side View



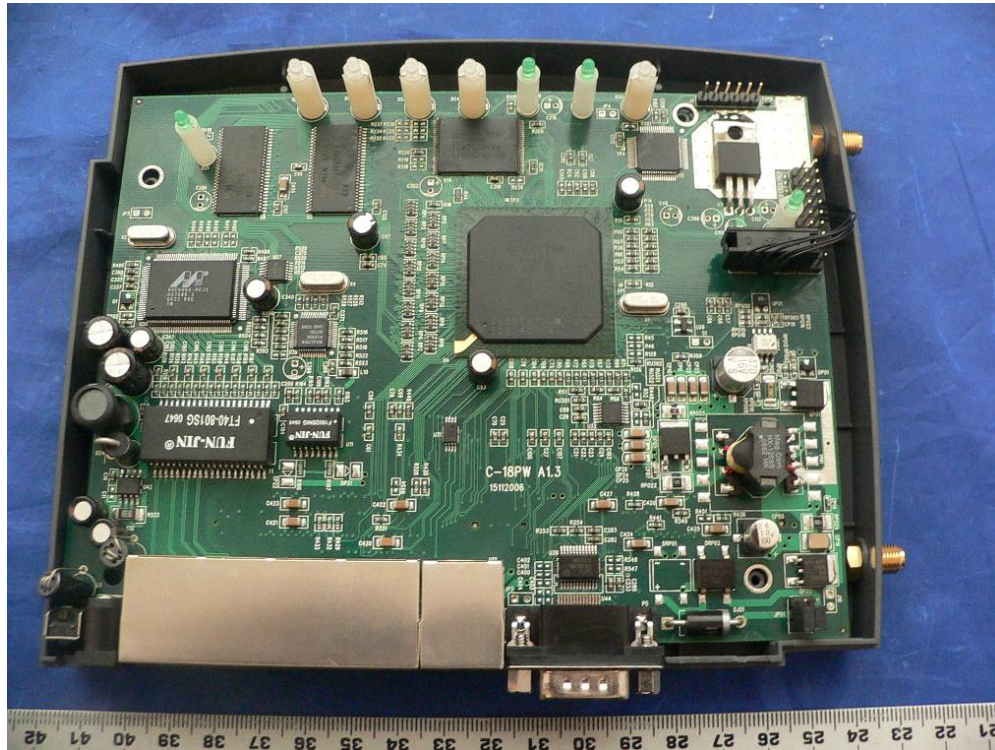
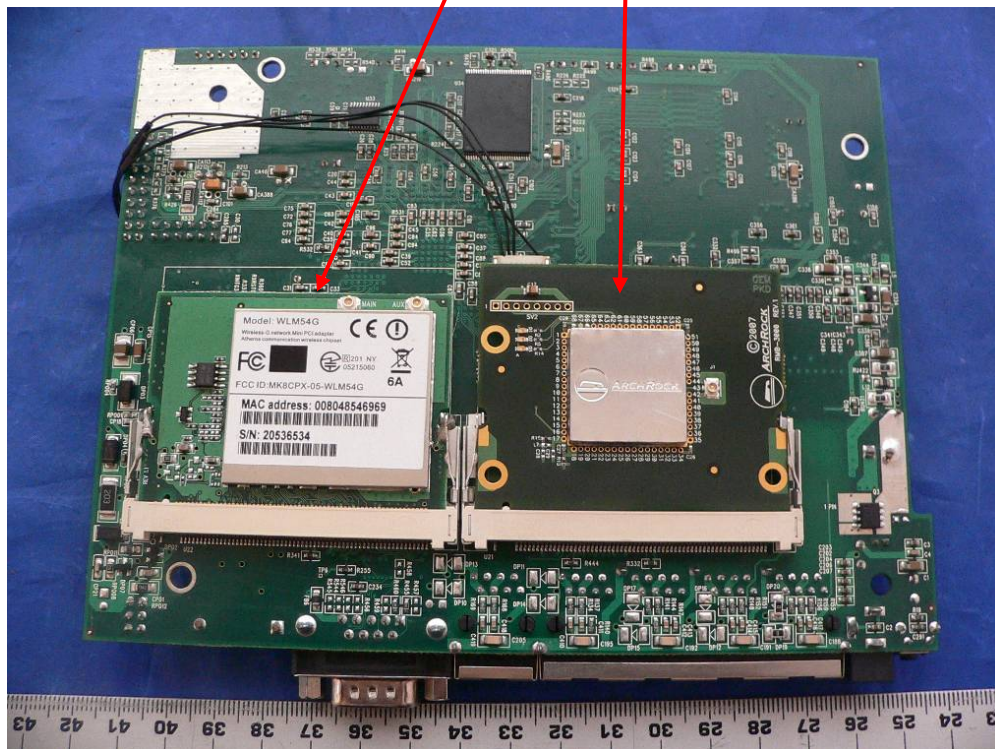
### 11.7 Host Device Antenna Ports View



### 11.8 Host Device AC/DC Adapter





**11.9 Host Device Top Cover Removed/ Chassis View/ Main PCB Side 1 View****11.10 Host Device Main PCB Side 2 View (802.11 b/g, and EUT)**

\*\*\*\*\* END OF REPORT \*\*\*\*\*