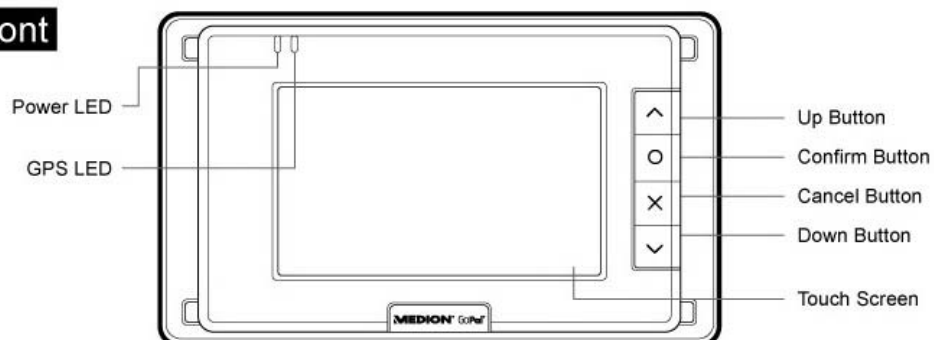

G4

Quick Start Guide

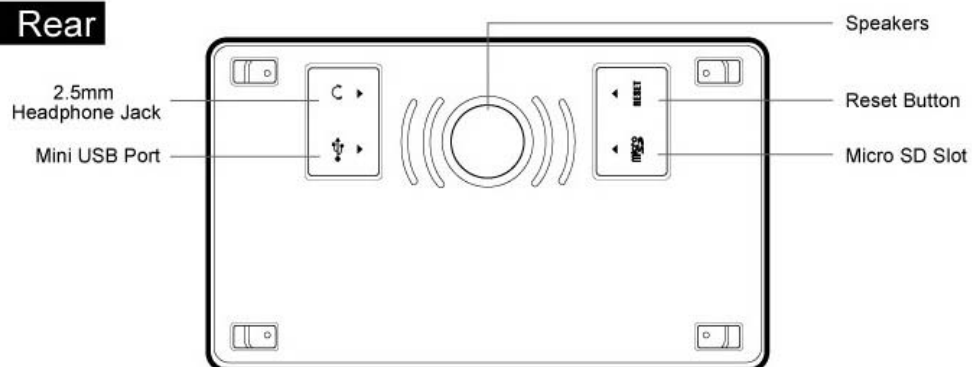
dmedia®

Machine Overview

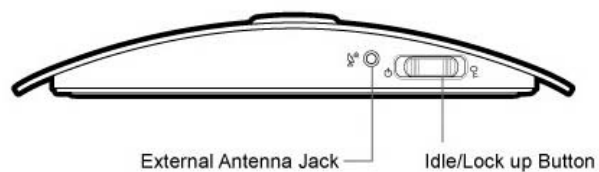
Front



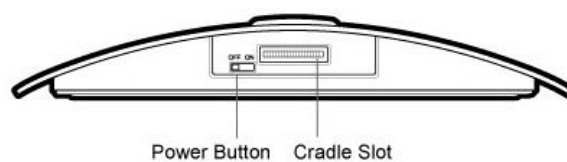
Rear



Top



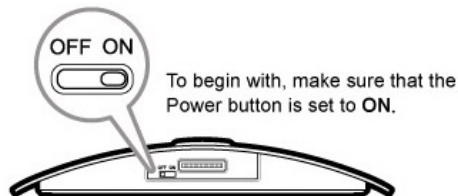
Bottom



Getting Start

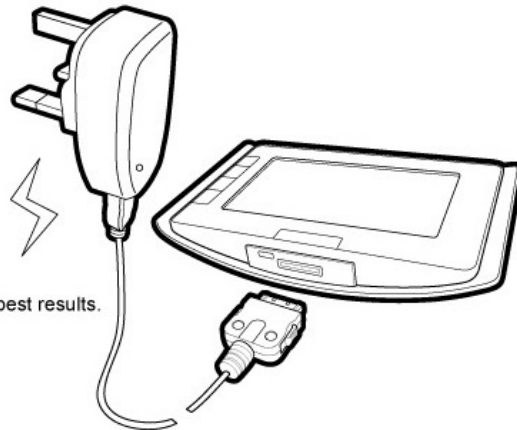
- Powering on

The Power button is set to OFF by default when you first receive your device.



- Specific USB cable to USB AC adapter

To charge device at home: Please use the 24 pin USB connector connect to USB AC adapter.



- Recharging

Before you start, make sure that the battery is charged for best results. It might take several hours to fully charge the battery. Do not remove the charger during the process.

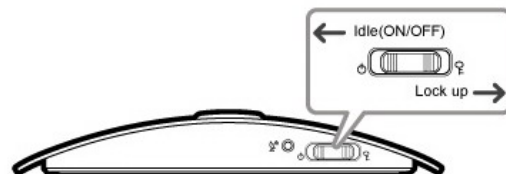
General Use

- Idle/Lock up Button

To call up the screen, slightly press the button to the left. To turn off the screen, press the button back to the center. To lock buttons, slightly press the button to the right.

! Caution

Turning off the screen does not power off your device. Your device will still consume battery power. Please power off your device before you use it.

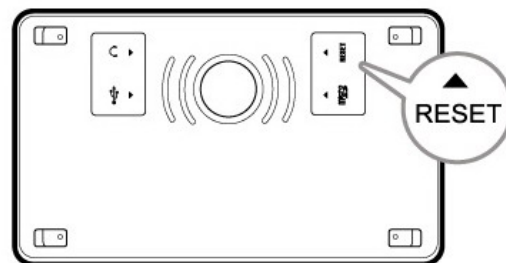


- Reset

Use Reset to restart your device if the following situations happen: frozen screen display or no response when you press buttons or apply the system.

! Caution

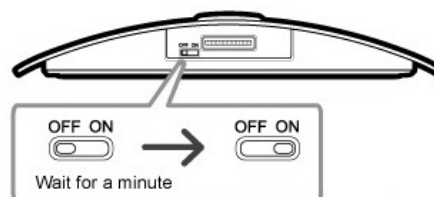
Use a pointed object to depress the reset button to restart your device.



- Default Recovery

If you cannot operate your device successfully after system reset, reset your machine by following the steps below:

Power off your device and wait for a minute before you power it on. Doing so recovers your system memory to its default value.

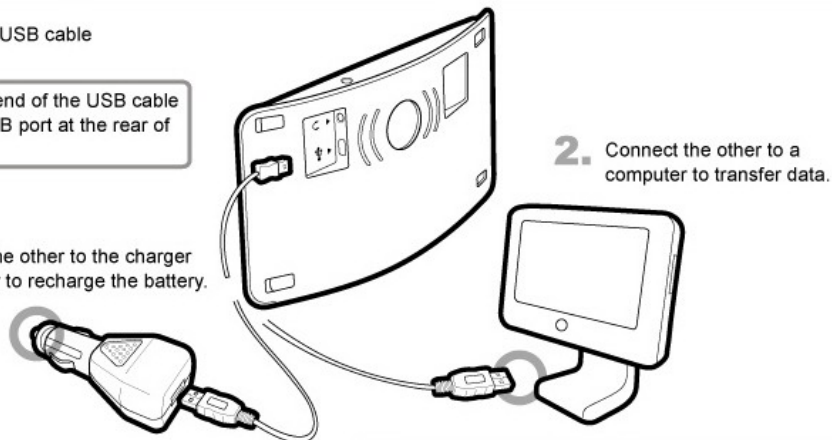


In Car Use

- Using the Mini USB cable

Connect one end of the USB cable to the Mini USB port at the rear of the device.

1. Connect the other to the charger in your car to recharge the battery.



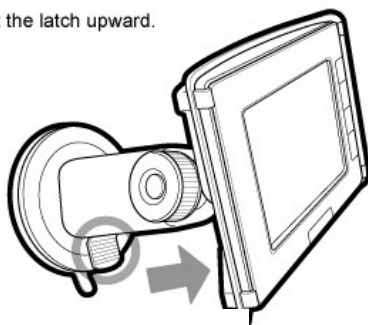
! Caution

In-car charger connection should be made after you start your car to avoid surcharge damages your device.

- Removing the cradle

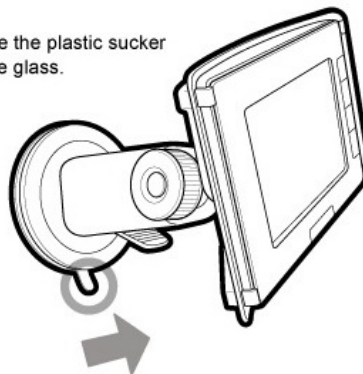
Please follow the instructions to remove the cradle. Removing forcefully may damage or break the cradle.

1. Lift the latch upward.

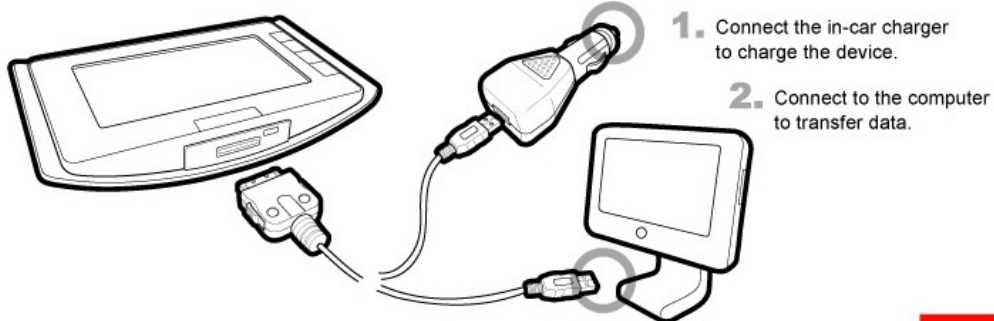


Cradle (Accessory)

2. Remove the plastic sucker from the glass.



- Specific USB cab



For the following equipment: PNA

CE 0984 !

Is herewith confirmed to comply with the requirements set out in the Council Directive on the Approximation of the Laws of the Member States relating to Electromagnetic Compatibility (89/336/EEC), Low-voltage Directive (73/23/EEC) and the Amendment Directive (93/68/EEC), the procedures given in European Council Directive 99/5/EC and 89/336/EEC.

The equipment was passed. The test was performed according to the following European standards:

- EN 300 328 V.1.6.1 (2004)
- EN 301 489-1 V.1.4.1 (2002) / EN 301 489-17 V.1.2.1 (2002)/ EN 301 489-3 V.1.4.1 (2002)
- EN 50371: 2002
- EN 60950: 2001

This equipment has been tested and found to comply with the limits for a class B digital device, pursuant to part 15 of the FCC rules. These limits are designed to provide to provide reasonable protection against harmful interference in a residential installation. This equipment generates, uses and can radiate radio frequency energy and, if not installed and used in accordance with the installation. , May cause harmful interference to radio communication. However, there is no guarantee that interference Will not occur in a particular installation. if this equipment does cause harmful interference to radio or television reception, which can be determined by turning the equipment off and on, the user is encouraged to try to correct the interference by one or more of the following measures:

- Reorient or relocate the receiving antenna
- Increase the separation between the equipment and receiver
- Connect the equipment into an outlet on a circuit different from that to which the receiver is connected
- Consult the dealer or an experienced radio / TV technician for help

You are cautioned that changes or modifications not expressly approved by the party responsible for compliance could void your authority to operate the equipment.

This device complies with part 15 of the FCC rules. Operation is subject to the following two conditions

- (1) This device may not cause harmful interference and
- (2) This device must accept any interference received, including interference that may cause undesired operation

FCC RF radiation exposure statement:

1. This transmitter must not be co-located or operating in conjunction with any other antenna or transmitter.