

Specifications

Item	Unit	Specifications.
Operating frequency	MHz	2400 ISM band(2400~2484) note 1
maximum Frequency	MHz	2500 note 1
minimum Frequency	MHz	2385 note 1
Characteristic impedance	Ohm	50 ohm
Return loss	dB	-10 dB maximum note 2
Gain	dBi	2 typical , NLT 1.4. note 3
Directivity		Omni directional

Connector. and Mechanical

Connector		Sold Dip
Size and dimension		See figure 1
Weight	Grams	3g

Reliability

Connector MTBF		5000 times, Screw in and out Note 4
Drop test		60 cm height, 1 corner, 3 axis, 6 faces note 5
Operating temperature	℃	0 to 50
Relative humidity	%	Up to 90

Packing labeling and shipping

Labeling		To be decided by Semiconductor
Packing		To be decided by Semiconductor
Shipping methods		To be decided by Semiconductor

Note1: The actual operating band is limited from 2400 to 2483.5Mhz by regulation. It can operate up to 5GHz at this length with frequency diversity characteristic.

Note2. The return loss (or equivalent to VSWR) is measured on the HP 8753 (or equivalent) network analyzer. (The test is based on ZyCast's test fixture)

Note 3. With normal operation to plug in and out, no excess unbalanced force applied to the connector.

Note 4. With suitable packing in the carton , the performance should not be degraded after drop test.

Mechanical outline and dimension

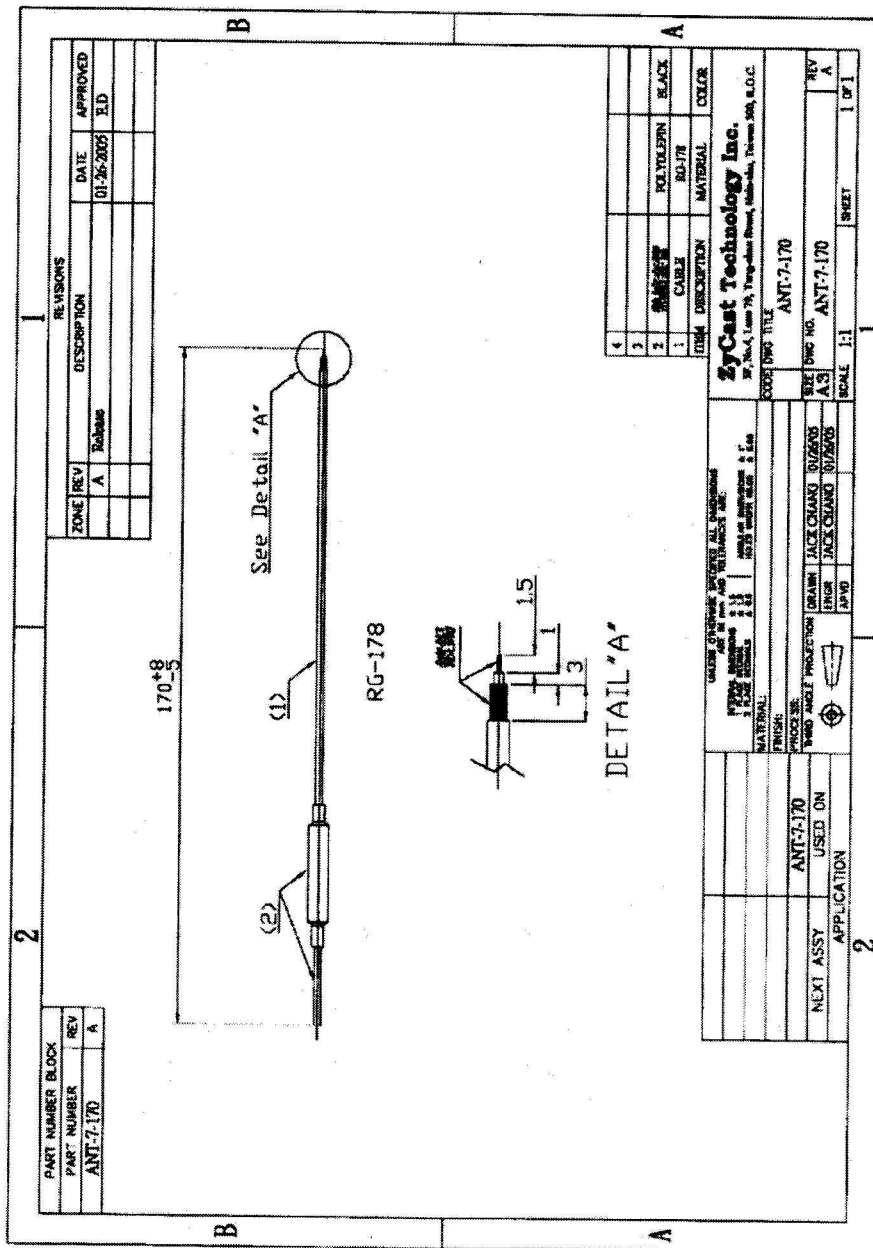


Figure 1 mechanical outline and dimension