



Azurecomm AZ-2400 Wi-Fi Wireless CATV Extension

User Manual (Preliminary)



Azure Communications Inc.

170 Knowles Drive
Los Gatos, CA 95032

408-376-3600
408-376-3625 (fax)

www.azurecomm.com
sales@azurecomm.com

© 2006 Azure Communications Inc. All rights reserved. Specifications are subject to change without notice.

AZ-2400 User Manual 0.2.doc

Federal Communications Commission Interference Statement

This equipment has been tested and found to comply with the limits for a Class B digital device pursuant to Part 15 of the FCC rules. These limits are designed to provide reasonable protection against harmful interference. This equipment generates, uses and can radiate radio frequency energy and, if not installed in accordance with the instructions, may cause harmful interference to radio communications.

Operation is subject to the following two conditions:

- This device may not cause harmful interference, and
- This device must accept any interference received, including interference that may cause undesired operation.

Federal Communications Commission Caution

Any changes or modifications not expressly approved by the party responsible for compliance could void the user's authority to operate the equipment.

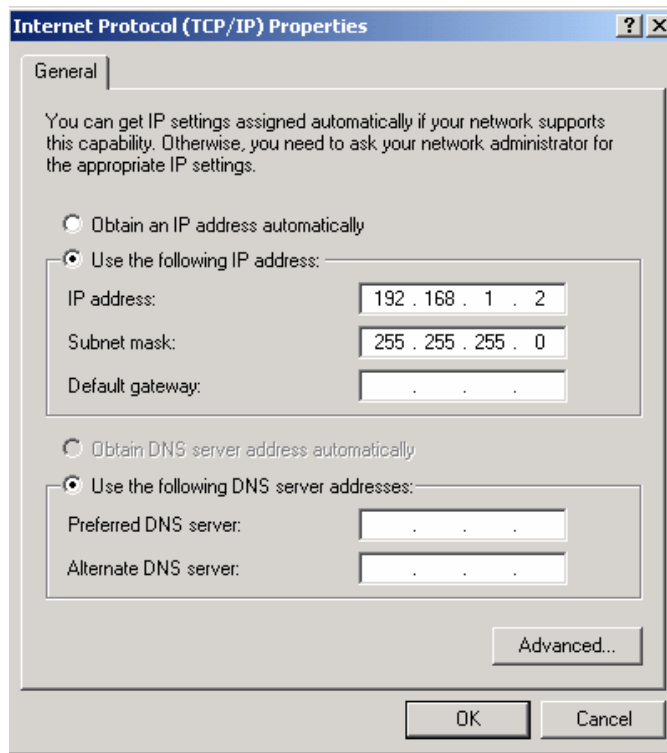
Federal Communications Commission Radiation Exposure Statement

This unit should be installed and operated with at least 20cm separation between the device and the user.

Router Function Setup

- **Set PC IP address to 192.168.1.2**

Typical Windows screen:



- **Start Internet Explorer and browse to 192.168.1.1**
- **Security Alert Panel Will Appear**

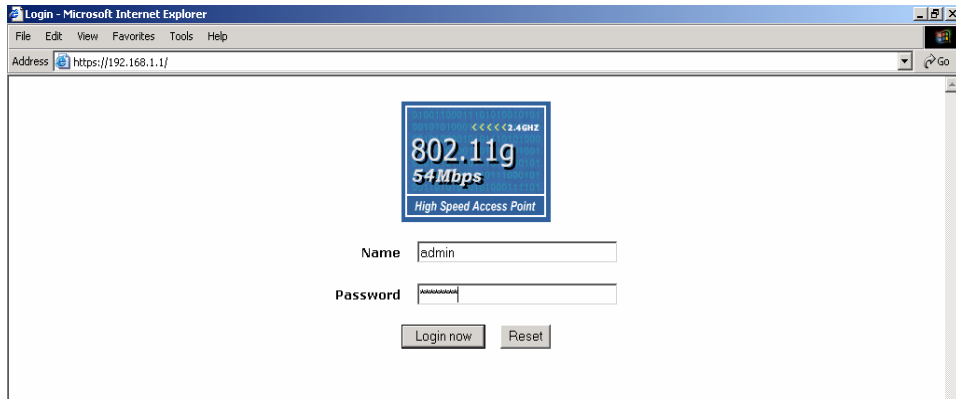
When asked "Do you want to proceed?"

Click "yes"



- **802.11g Device Login Screen Will Appear**

Name: admin
Password: password



Now Logged Onto 802.11g Radio/Router



Radio/Router configuration is self-documented.

When completed, click “Logout” on the **About** screen