

PROPRIETARY AND CONFIDENTIAL

THE INFORMATION CONTAINED IN THIS DRAWING IS THE SOLE PROPERTY
OF ATLAS/MPS. ANY REPRODUCTION IN PART OR WHOLE WITHOUT WRITTEN
PERMISSION OF ATLAS/ MPS IS PROHIBITED

REVISIONS

REV.	DESCRIPTION	DATE	APPROVED
A	INITIAL RELEASE	01/23/06	

ATLAS AMC 11



Serial/ Terminal ID XXXXXXXXX

FCC ID: TXA-AMC11



IMEI: XXXXXXXXXXXXXXXXX



Ph XXX-XXX-XXXX CTC XXX

0.75

1.50

MATERIAL SPECIFICATION

- WHITE VINYL OR EQUIVALENT
- PRINTABLE SINGLE ROW ROLL, 1" CORE
- PERMANENT LABEL

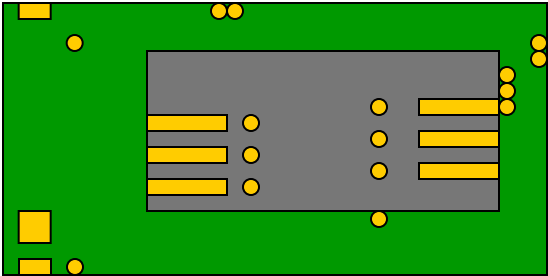
UNLESS OTHERWISE SPECIFIED DIMENSIONS ARE IN INCHES TOLERANCES ARE:				<div>ATLAS★MPS</div> <div>LABEL, AMC-11</div>		
		APPROVALS	DATE			
		DRAWN L. AGUIRRE	01/23/06			
		CHECKED				
MATERIAL	SEE NOTE	RESP ENG				
FINISH	SEE NOTE	MFG ENG L. AGUIRRE	01/23/06			
DO NOT SCALE DRAWING		QUAL ENG		SCALE: N/A	REV A	SHEET 1/1

PROPRIETARY AND CONFIDENTIAL

THE INFORMATION CONTAINED IN THIS DRAWING IS THE SOLE PROPERTY OF ATLAS/MPS. ANY REPRODUCTION IN PART OR WHOLE WITHOUT WRITTEN PERMISSION OF ATLAS/ MPS IS PROHIBITED

REVISIONS

REV.	DESCRIPTION	DATE	APPROVED
A	INITIAL RELEASE	02/14/06	

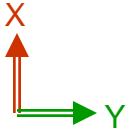


Front



Back

Label →



UNLESS OTHERWISE SPECIFIED DIMENSIONS ARE IN INCHES TOLERANCES ARE:	APPROVALS	DATE	ATLAS★MPS	
	DRAWN	L. AGUIRRE		
	CHECKED		LABEL, AMC-11 LOCATION, INT	
	RESP ENG			
MATERIAL	SEE NOTE	MFG ENG	L. AGUIRRE	02/14/06
FINISH	SEE NOTE	QUAL ENG		
DO NOT SCALE DRAWING		SCALE: N/A	REV A	SHEET 1/1