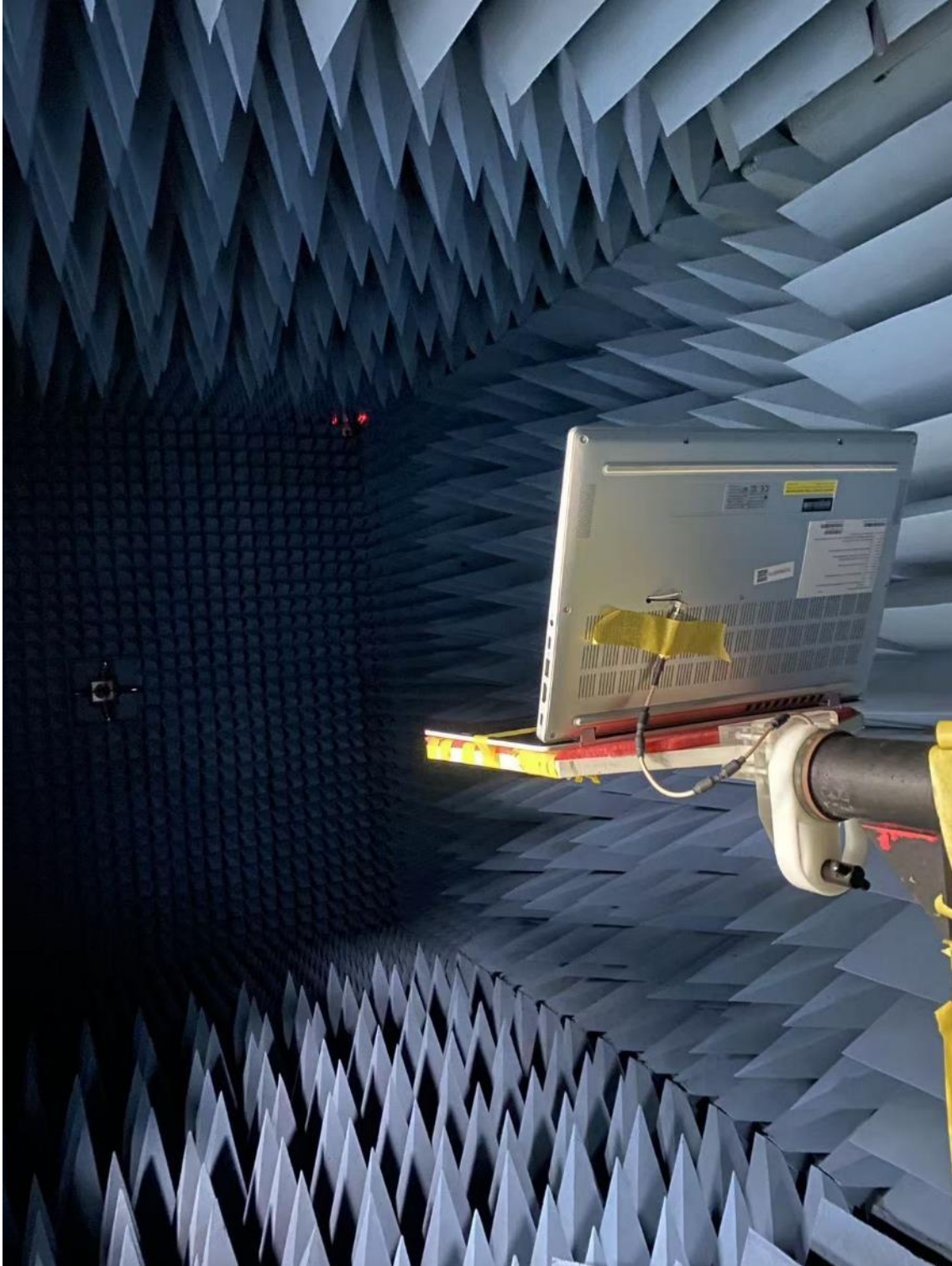


# Annex A. Photographs

---

## A.1 Setup Photo

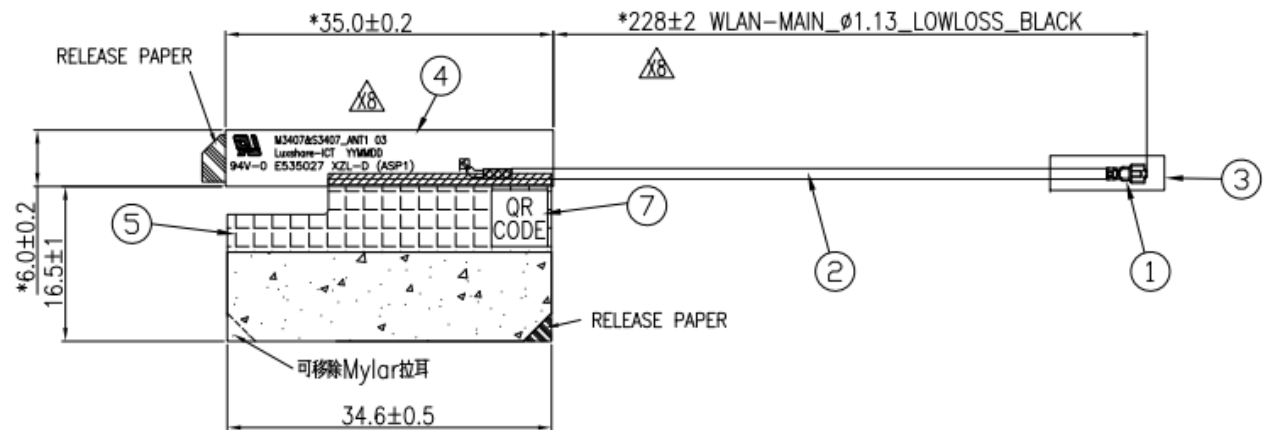
<insert test diagram here for test site utilized>



## A.2 Test sample

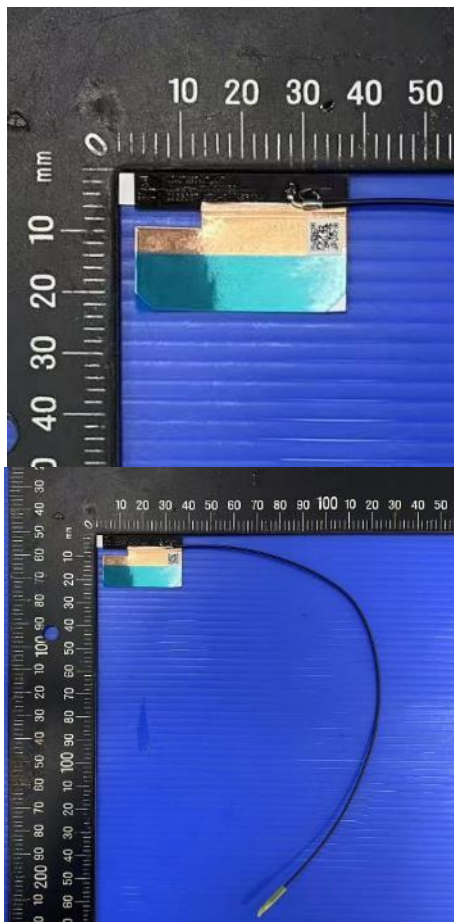
### Main Antenna

#### Antenna Drawing



#### Antenna Photo

##### Front



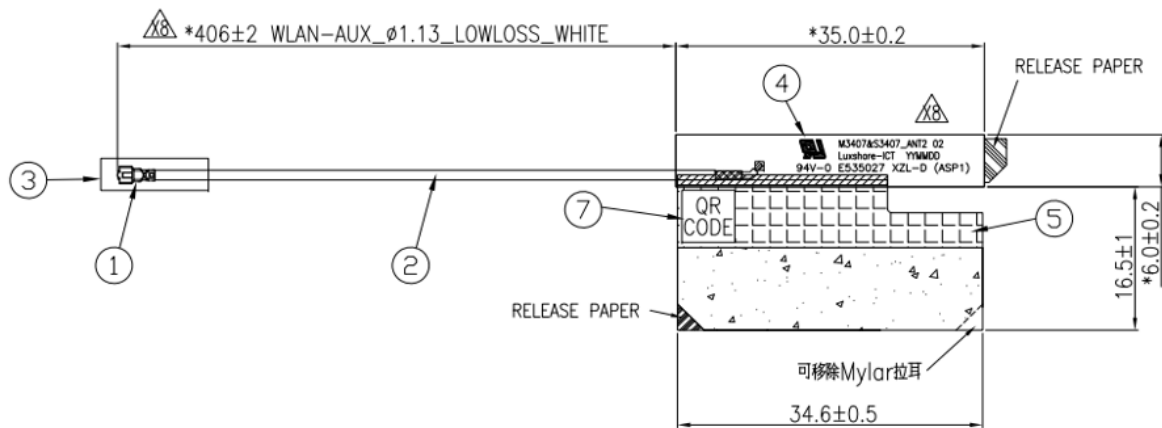
##### Back



**Note: antenna photo should include L type ruler**

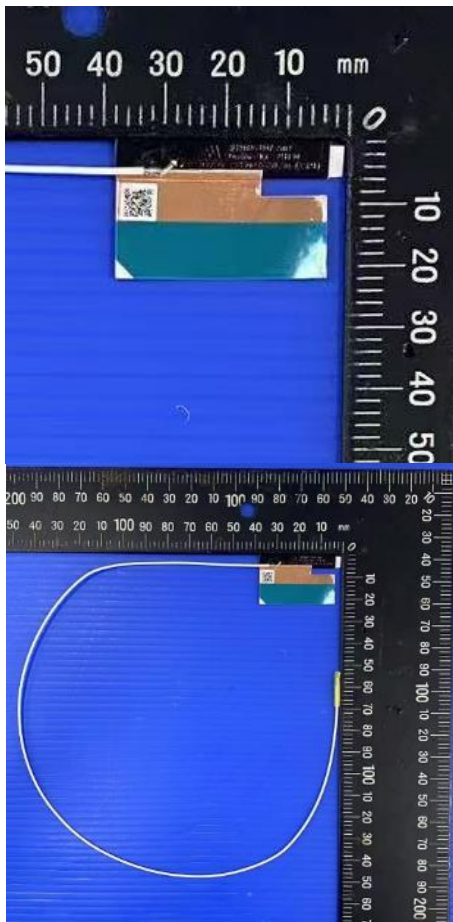
## Aux Antenna

### Antenna Drawing



### Antenna Photo

Front



Back



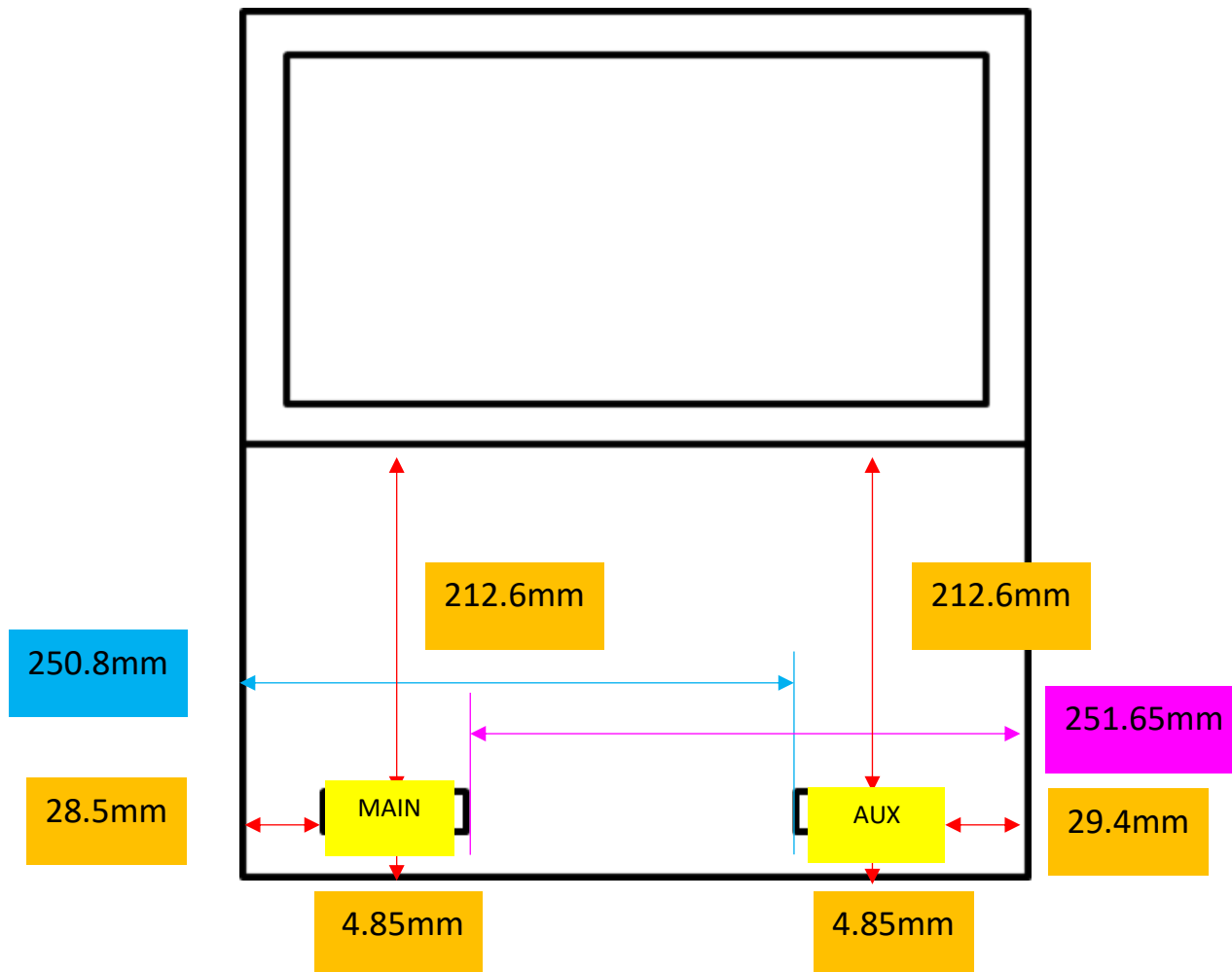
**Note: antenna photo should include L type ruler**

# Annex B. Antenna Location

## B.1 Antenna Host Platform Location Information

Include a dimensioned photo(s) or dimensioned drawing(s) of Main and Aux antenna placements (measurements are not required for receive-only antenna).

Any antenna that transmits must show dimensions to bottom of laptop. Provide a description of the materials that are used for supporting or surrounding transmit antennas; for example, non-conductive plastics vs. conductive coated plastic or metallic materials.

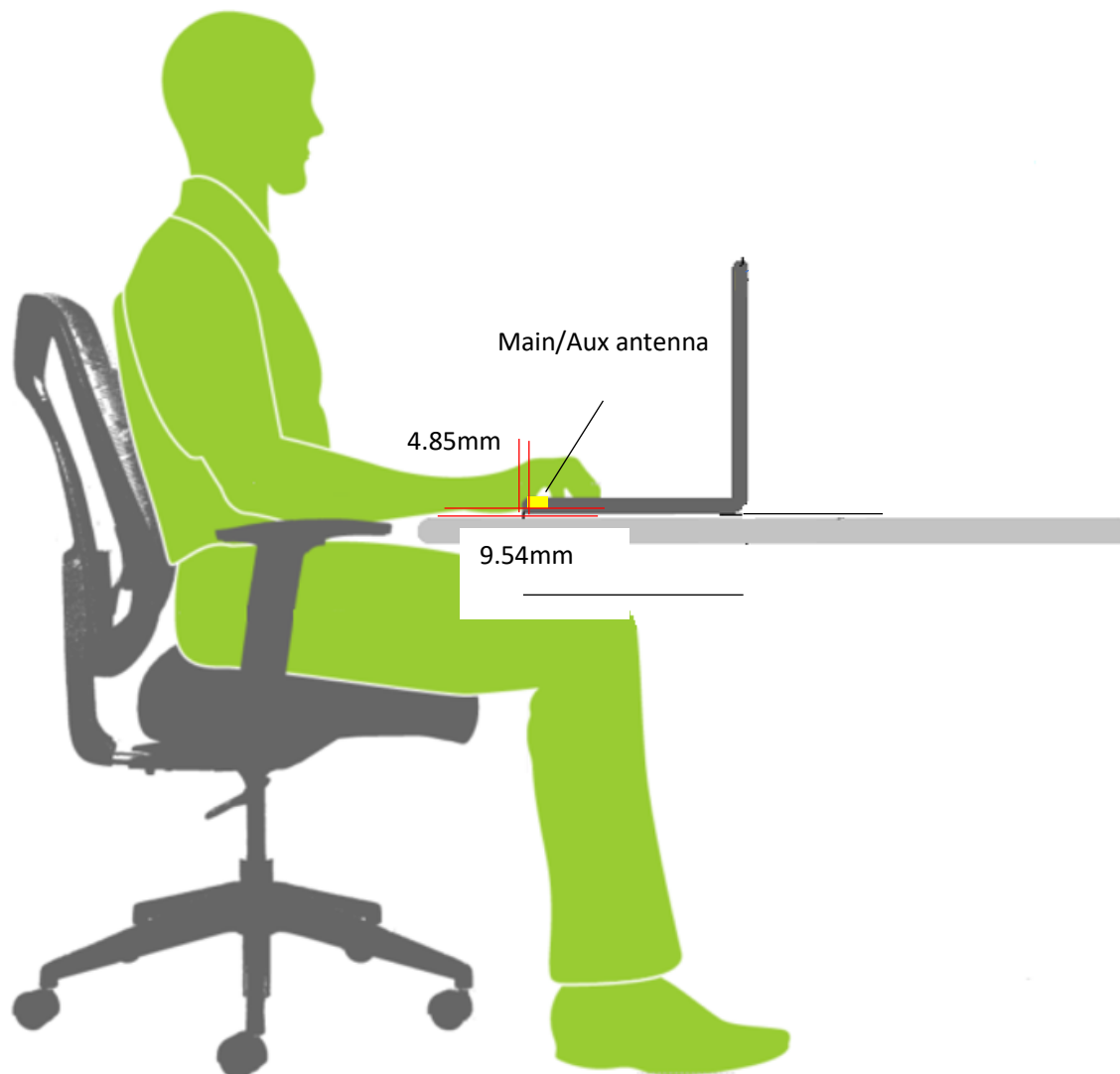




## B.2 Antenna dimensional information for SAR evaluation

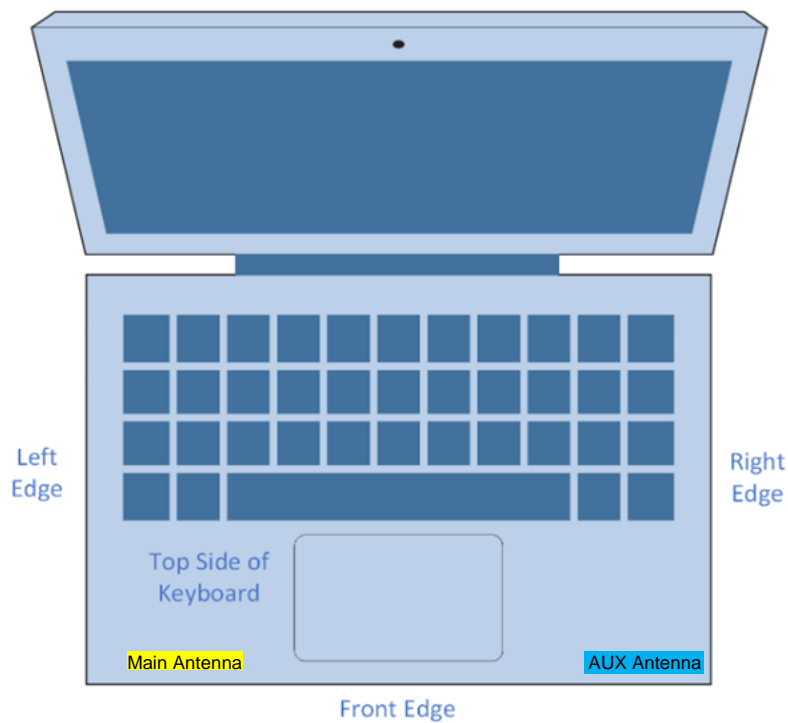
Include a dimensioned photo(s) or dimensioned drawing(s) showing the distance (mm) between the transmit antennas and the user. For notebook/laptop hosts show lapheld position (example below). For tablet hosts show all orientations including lapheld, primary & secondary portrait, primary & secondary landscape positions. Include a description of any proximity sensors or power throttling implementations that limit or exclude use of any host orientation.

### Antennas on the panel section



Measuring Surface	Antenna	Separation Distance(antenna-to- Surface)(mm)	1g SAR
Bottom Side	Main	<b>9.54</b>	FCC/ISED
	Aux	<b>9.54</b>	FCC/ISED

## Antennas on the keyboard section



Measuring Surface	Antenna	Separation Distance(antenna-to-Surface)(mm)	1g or 10g SAR
Bottom Side	Main	<b>9.54</b>	1g (FCC/ISED)
	Aux	<b>9.54</b>	1g (FCC/ISED)
Front Edge	Main	<b>4.85</b>	1g (ISED)
	Aux	<b>4.85</b>	1g (ISED)
Left Edge	Main	<b>28.5</b>	10g (ISED)
	Aux	<b>250.8</b>	10g (ISED)
Right Edge	Main	<b>251.6</b>	10g (ISED)
	Aux	<b>29.4</b>	10g (ISED)
Top side of Keyboard	Main	<b>1.82</b>	10g (ISED)
	Aux	<b>1.82</b>	10g (ISED)