

Annex A. Photographs

A.1 Setup Photo

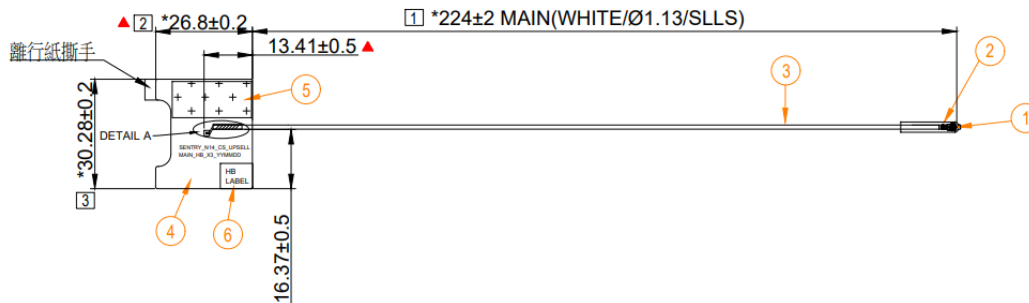
<insert test diagram here for test site utilized>



A.2 Test sample

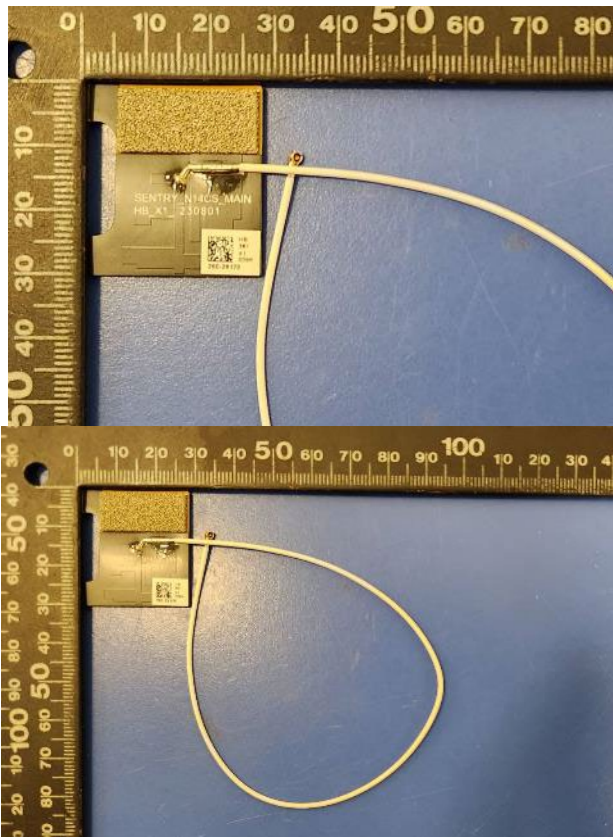
Main Antenna

Antenna Drawing

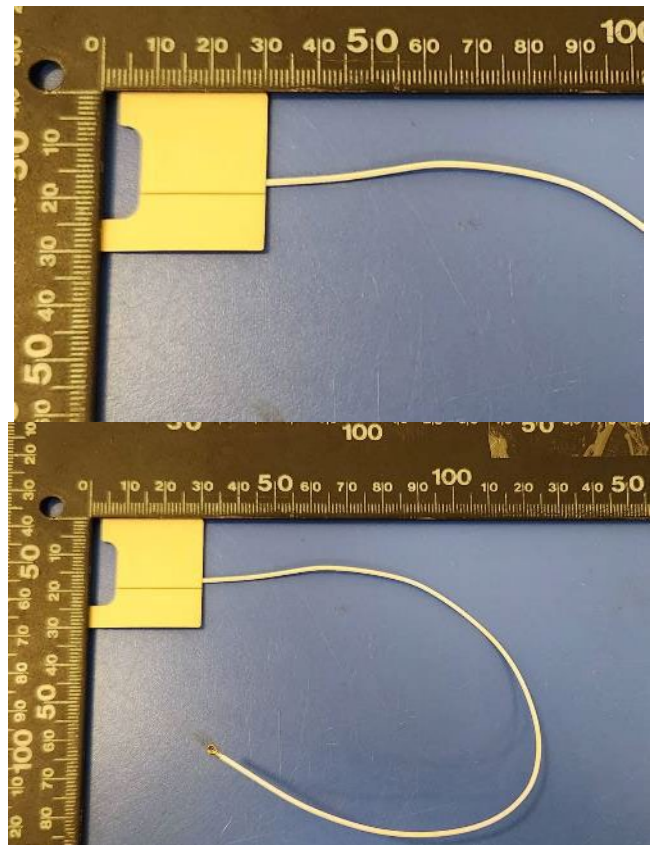


Antenna Photo

Front



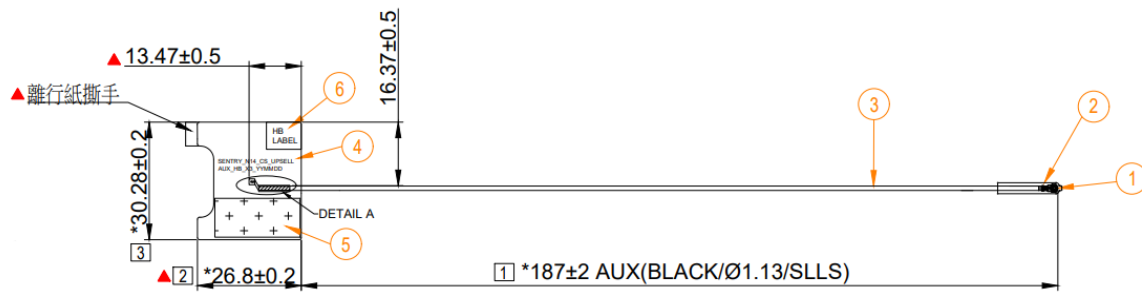
Back



Note: antenna photo should include L type ruler

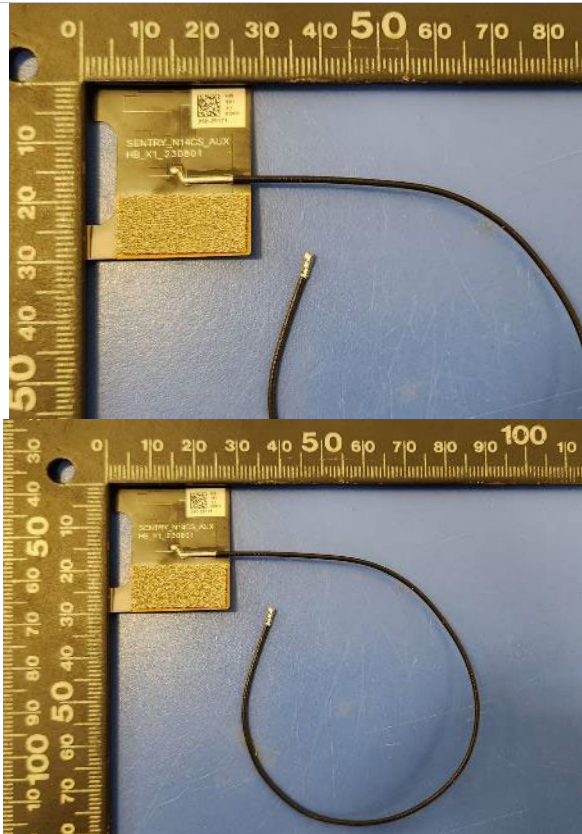
Aux Antenna

Antenna Drawing

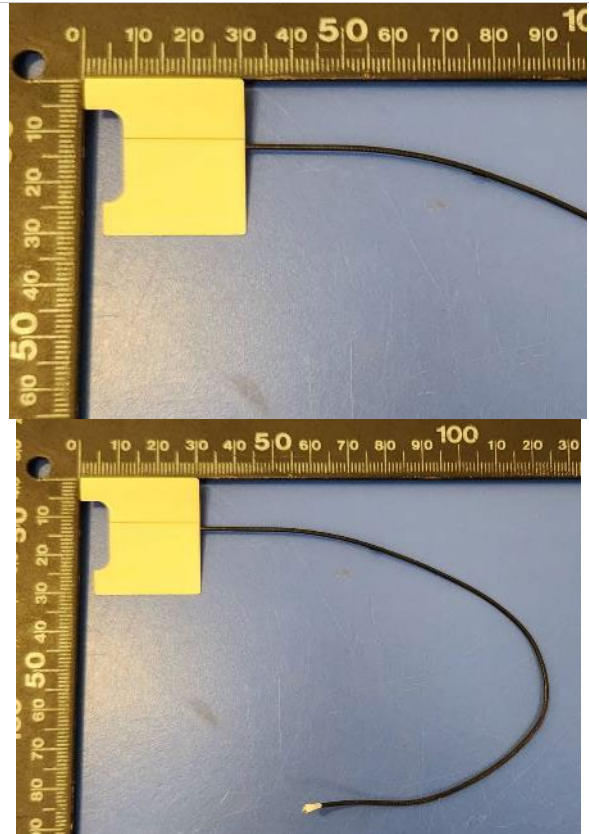


Antenna Photo

Front



Back



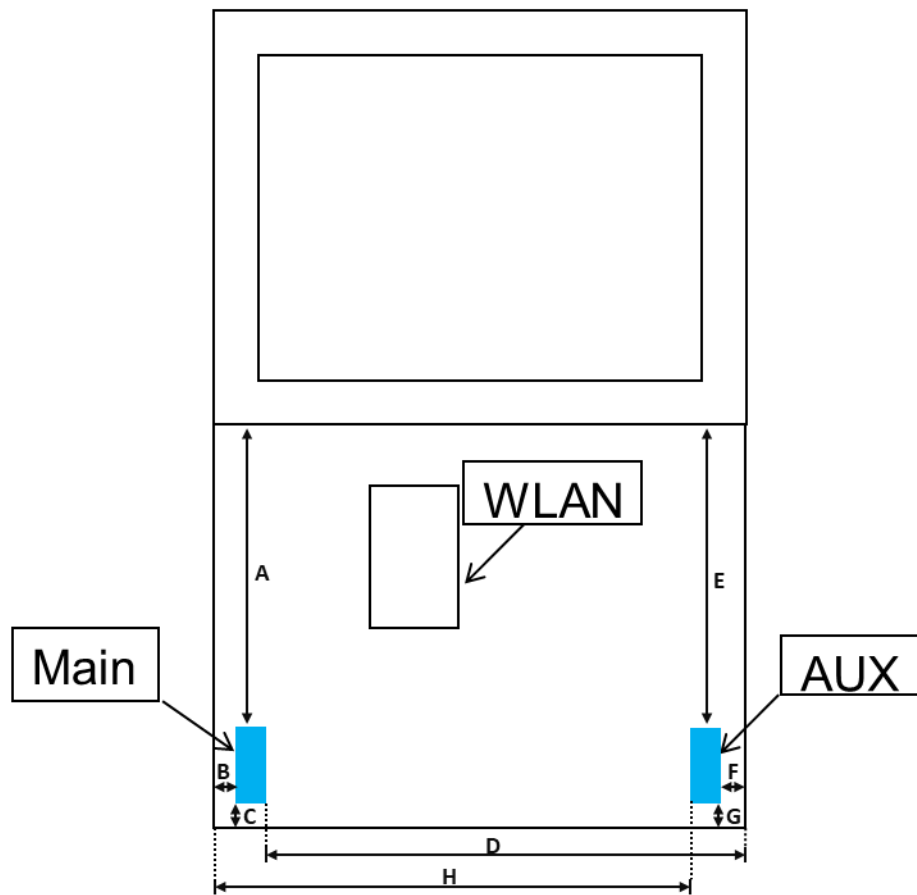
Note: antenna photo should include L type ruler

Annex B. Antenna Location

B.1 Antenna Host Platform Location Information

Include a dimensioned photo(s) or dimensioned drawing(s) of Main and Aux antenna placements (measurements are not required for receive-only antenna).

Any antenna that transmits must show dimensions to bottom of laptop. Provide a description of the materials that are used for supporting or surrounding transmit antennas; for example, non-conductive plastics vs. conductive coated plastic or metallic materials.



Distance	A	B	C	D	E	F	G	H
(mm)	184.1	6.95	15.05	293.68	184.1	6.95	15.05	293.68

B.2 Antenna dimensional information for SAR evaluation

Include a dimensioned photo(s) or dimensioned drawing(s) showing the distance (mm) between the transmit antennas and the user. For notebook/laptop hosts show lapheld position (example below). For tablet hosts show all orientations including lapheld, primary & secondary portrait, primary & secondary landscape positions. Include a description of any proximity sensors or power throttling implementations that limit or exclude use of any host orientation.

