

FCC SAR Test Report

FCC ID: TX2-RTL8852AE

Report No. : BTL-FCC SAR-2-2102C068
Equipment : 11ax RTL8852AE Combo module
Model Name : RTL8852AE
Series Model : N/A
Brand Name : REALTEK
Applicant : Realtek Semiconductor Corp.
Address : No. 2, Innovation Road II, Hsinchu Science Park, Hsinchu 300, Taiwan
Date of Receipt : Feb. 23, 2021
Date of Test : Mar. 18, 2021 ~ Mar. 27, 2021
Issued Date : Apr. 20, 2021

The above equipment has been tested and found in compliance with the requirement of the above standards by BTL Inc.

Prepared by :

Justin Huang

Justin Huang, Engineer

Approved by :

Herbert Liu

Herbert Liu, Manager



Certificate #5123.02

BTL Inc.

No.3, Jinshagang 1st Road, Shixia, Dalang Town, Dongguan, Guangdong, China.

Tel: +86-769-8318-3000

Web: www.newbtl.com

Declaration

BTL represents to the client that testing is done in accordance with standard procedures as applicable and that test instruments used has been calibrated with standards traceable to international standard(s) and/or national standard(s).

BTL's reports apply only to the specific samples tested under conditions. It is manufacture's responsibility to ensure that additional production units of this model are manufactured with the identical electrical and mechanical components. **BTL** shall have no liability for any declarations, inferences or generalizations drawn by the client or others from **BTL** issued reports.

The report must not be used by the client to claim product certification, approval, or endorsement by NIST, A2LA, or any agency of the U.S. Government.

This report is the confidential property of the client. As a mutual protection to the clients, the public and ourselves, the test report shall not be reproduced, except in full, without our written approval.

BTL's laboratory quality assurance procedures are in compliance with the **ISO/IEC 17025** requirements, and accredited by the conformity assessment authorities listed in this test report.

BTL is not responsible for the sampling stage, so the results only apply to the sample as received.

The information, data and test plan are provided by manufacturer which may affect the validity of results, so it is manufacturer's responsibility to ensure that the apparatus meets the essential requirements of applied standards and in all the possible configurations as representative of its intended use.

Limitation

For the use of the authority's logo is limited unless the Test Standard(s)/Scope(s)/Item(s) mentioned in this test report is (are) included in the conformity assessment authorities acceptance respective.

Please note that the measurement uncertainty is provided for informational purpose only and are not use in determining the Pass/Fail results.

Table of Contents	Page
REPORT ISSUED HISTORY	5
1 . GENERAL INFORMATION	6
1.1 GENERAL DESCRIPTION OF EUT	6
2 . RF EMISSIONS MEASUREMENT	7
2.1 TEST FACILITY	7
2.2 MEASUREMENT UNCERTAINTY	7
2.3 WLAN ANTENNA INFORMATION	7
2.4 STATEMENT OF COMPLIANCE	8
2.5 LABORATORY ENVIRONMENT	8
2.6 MAIN TEST INSTRUMENTS	9
3 . SAR MEASUREMENTS SYSTEM CONFIGURATION	10
3.1 SAR MEASUREMENT SET-UP	10
3.1.1 TEST SETUP LAYOUT	10
3.2 DASY5 E-FIELD PROBE SYSTEM	11
3.2.1 PROBE SPECIFICATION	11
3.2.2 E-FIELD PROBE CALIBRATION	12
3.2.3 OTHER TEST EQUIPMENT	13
3.2.4 SCANNING PROCEDURE	14
3.2.5 SPATIAL PEAK SAR EVALUATION	15
3.2.6 DATA STORAGE AND EVALUATION	16
3.2.7 DATA EVALUATION BY SEMCAD	17
4 . SYSTEM VERIFICATION PROCEDURE	19
4.1 TISSUE VERIFICATION	19
4.2 SYSTEM CHECK	20
4.3 SYSTEM CHECK PROCEDURE	20
5 . SAR MEASUREMENT VARIABILITY AND UNCERTAINTY	21
5.1 SAR MEASUREMENT VARIABILITY	21
6 . OPERATIONAL CONDITIONS DURING TEST	22
6.1 SAR TEST CONFIGURATION	22
6.1.1 WIFI TEST CONFIGURATION	22
6.2 TEST POSITION	24
7 . TEST RESULT	25
7.1 CONDUCTED POWER RESULTS	25
7.1.1 CONDUCTED POWER MEASUREMENTS OF BT	25

Table of Contents	Page
7.1.2 CONDUCTED POWER MEASUREMENTS OF WIFI 2.4G	26
7.1.3 CONDUCTED POWER MEASUREMENTS OF WIFI 5.2G	29
7.1.4 CONDUCTED POWER MEASUREMENTS OF WIFI 5.3G	32
7.1.5 CONDUCTED POWER MEASUREMENTS OF WIFI 5.6G	35
7.1.6 CONDUCTED POWER MEASUREMENTS OF WIFI 5.8G	41
7.2 SAR TEST RESULTS	44
7.2.1 SAR MEASUREMENT RESULT	45
7.3 MULTIPLE TRANSMITTER EVALUATION	47
7.3.1 STAND-ALONE SAR TEST EXCLUSION	48
7.3.2 SIMULTANEOUS TRANSMISSION CONDITIONS	48
APPENDIX	49
1. TEST LAYOUT	49
Appendix A. SAR Plots of System Verification	
Appendix B. SAR Plots of SAR Measurement	
Appendix C. Calibration Certificate	
Appendix D. Photographs of the Test Set-Up	

REPORT ISSUED HISTORY

Report Version	Description	Issued Date
R00	Original Issue.	Mar. 29, 2021
R01	Modified the comments of TCB.	Apr. 12, 2021
R02	Updated the model name of implementation platform.	Apr. 19, 2021
R03	Modified the operation frequency of WiFi 5.6G, and updated the power of WiFi 5.6G.	Apr. 20, 2021

1. GENERAL INFORMATION

1.1 GENERAL DESCRIPTION OF EUT

Equipment	11ax RTL8852AE Combo module	
Test Model	RTL8852AE	
Series Model	N/A	
Model Difference(s)	N/A	
Test Sample	Engineering Sample No.: DG202102253, DG202102251	
Battery Information	1# Brand: Lenovo Manufacturer / Model: Simplo / L20M4PD3 Rating: 15.36 Vdc, 4460mAh 2# Brand: Lenovo Manufacturer / Model: LGC(LG) / L20L4PD3 Rating: 15.36 Vdc, 4460mAh	
Frequency Range	WLAN 2.4 GHz Band:	2400 MHz ~ 2483.5 MHz
	RLAN 5 GHz Band:	5150 MHz ~ 5250 MHz 5250 MHz ~ 5350 MHz 5470 MHz ~ 5725 MHz 5725 MHz ~ 5850 MHz
	Bluetooth:	2400 MHz ~ 2483.5 MHz
Operation Frequency	WLAN 2.4 GHz Band:	2412 MHz ~ 2472 MHz
	RLAN 5 GHz Band:	5180 MHz ~ 5240 MHz 5260 MHz ~ 5320 MHz 5500 MHz ~ 5720 MHz 5745 MHz ~ 5825 MHz
	Bluetooth:	2402 MHz ~ 2480 MHz
Standard(s)	<p>ANSI Std C95.1-1992 Safety Levels with Respect to Human Exposure to Radio Frequency Electromagnetic Fields, 3 kHz - 300 GHz. (IEEE Std C95.1-1991)</p> <p>IEEE Std 1528-2013 Recommended Practice for Determining the Peak Spatial-Average Specific Absorption Rate (SAR) in the Human Head from Wireless Communications Devices: Measurement Techniques</p> <p>KDB616217 D04 SAR for laptop and tablets v01r02 KDB447498 D01 General RF Exposure Guidance v06 KDB248227 D01 802.11 Wi-Fi SAR v02r02 KDB865664 D01 SAR measurement 100 MHz to 6 GHz v01r04 KDB865664 D02 SAR Reporting v01r02 KDB690783 D01 SAR Listings on Grants v01r03</p>	

Note:

1. Implementation in the following platform

Product name: Notebook Computer

Brand name: Lenovo

Model name: ThinkBook 16p G2 ACH, 20YM, ThinkBook 16p G2 ACHxxxxxx, 20YMxxxxxx
(The "x" in the model name can be 0 to 9, A to Z, a to z, "-" or blank, it represents different sales customer code, all models only name difference)

2. RF EMISSIONS MEASUREMENT

2.1 TEST FACILITY

The test facilities used to collect the test data in this report is SAR room at the location of No.3, Jinshagang 1st Road, ShiXia, Dalang Town, Dong Guan, China.523792

2.2 MEASUREMENT UNCERTAINTY

Note: Per KDB865664 D01 SAR Measurement 100 MHz to 6 GHz, when the highest measured 1-g SAR within a frequency band is < 1.5 W/kg, the extensive SAR measurement uncertainty analysis described in IEEE Std 1528-2013 is not required in SAR reports submitted for equipment approval. The equivalent ratio (1.5/1.6) is applied to extremity and occupational exposure conditions.

2.3 WLAN ANTENNA INFORMATION

Ant.	Brand	Model	Type	Frequency Range (MHz)	Gain (dBi)
Ant S0 (Main Ant)	Luxshare	L01RF285-NB-H	PIFA Antenna	2400-2500MHz	-1.35
				5150-5350MHz	1.88
				5470-5725MHz	1.36
				5725-5850MHz	0.01
Ant S1 (Aux Ant)	Luxshare	L01RF286-NB-H	PIFA Antenna	2400-2500MHz	-0.68
				5150-5350MHz	-0.39
				5470-5725MHz	-0.89
				5725-5850MHz	-0.89

Ant.	Brand	Model	Type	Frequency Range (MHz)	Gain (dBi)
Ant S0 (Main Ant)	INPAQ	MDA-LB-02-034	PIFA Antenna	2400-2500MHz	2.02
				5150-5350MHz	-0.02
				5470-5725MHz	1.03
				5725-5850MHz	2.89
Ant S1 (Aux Ant)	INPAQ	MDA-LB-02-035	PIFA Antenna	2400-2500MHz	-1.15
				5150-5350MHz	-0.03
				5470-5725MHz	0.48
				5725-5850MHz	2.81

2.4 STATEMENT OF COMPLIANCE

Mode	Highest Reported Body SAR-1g (W/kg)
2.4G WLAN	0.066
5.2G WLAN	0.408
5.3G WLAN	0.358
5.6G WLAN	0.136
5.8G WLAN	0.132
Bluetooth	0.043

Note:

The device is in compliance with Specific Absorption Rate (SAR) for general population uncontrolled exposure limits according to the FCC rule §2.1093, the ANSI C95.1:1992/IEEE C95.1:1991, the NCRP Report Number 86 for uncontrolled environment, and had been tested in accordance with the measurement methods and procedures specified in IEEE Std 1528-2013.

2.5 LABORATORY ENVIRONMENT

Temperature	Min. = 18°C, Max. = 25°C
Relative humidity	Min. = 30%, Max. = 70%
Ground system resistance	< 0.5Ω
Ambient noise is checked and found very low and in compliance with requirement of standards.	
Reflection of surrounding objects is minimized and in compliance with requirement of standards.	

2.6 MAIN TEST INSTRUMENTS

Item	Equipment	Manufacturer	Model	Serial No.	Cal. Date	Cal. Interval
1	Data Acquisition Electronics	Speag	DAE4	1390	Nov. 06, 2020	1 Year
2	Data Acquisition Electronics	Speag	DAE4	1423	Dec. 11, 2020	1 Year
3	Data Acquisition Electronics	Speag	DAE4	420	Dec. 09, 2020	1 Year
4	E-field Probe	Speag	EX3DV4	3974	Dec. 18, 2020	1 Year
5	E-field Probe	Speag	ES3DV3	3162	May 09, 2020	1 Year
6	E-field Probe	Speag	EX3DV4	7544	Oct. 29, 2020	1 Year
7	System Validation Dipole	Speag	D2450V2	919	Jun. 11, 2018	3 Years
8	System Validation Dipole	Speag	D5GHzV2	1160	Jun. 20, 2018	3 Years
9	ELI Phantom	Speag	ELI Phantom V5.0	1222	N/A	N/A
10	ELI Phantom	Speag	ELI Phantom V5.0	1128	N/A	N/A
11	Power Amplifier	Mini-Circuits	ZHL-42W+	QA1333003	Dec. 29, 2020	1 Year
12	Power Amplifier	Mini-Circuits	ZVE-8G+	520701341	Feb. 27, 2021	1 Year
13	DC Source meter	Iteck	IT6154	0061041267682 01001	Jul. 25, 2020	1 Year
14	Signal Analyzer	R&S	FSV7	103120	Jul. 25, 2020	1 Year
15	Vector Network Analyzer	Anritsu	MS46522B	1538101	Jul. 25, 2020	1 Year
16	Signal Generator	R&S	SMF100A	101214	Feb. 27, 2021	1 Year
17	Smart Power Sensor	R&S	NRP-Z21	102209	Feb. 27, 2021	1 Year
18	Dielectric Assessment Kit	Speag	DAK-3.5	1226	N/A	N/A
19	Directional Coupler	Woken	TS-PCC0M-05	107090019	Feb. 27, 2021	1 Year
20	Coupler	Woken	0110A05601O-10	COM5BNW1A2	Feb. 27, 2021	1 Year
21	Digital Thermometer	LKM	DTM3000	3519	Jul. 02, 2020	1 Year

Note:

1. "N/A" denotes no model name, serial No. or calibration specified.
2. * The test equipment recalibrated between different test periods were within the valid period when the tests were performed.
3.
 - 1) Per KDB865664 D01 requirements for dipole calibration, the test laboratory has adopted three-year extended calibration interval. Each measured dipole is expected to evaluate with the following criteria at least on annual interval in Appendix C.
 - a) There is no physical damage on the dipole;
 - b) System check with specific dipole is within 10% of calibrated value;
 - c) The most recent return-loss result, measured at least annually, deviates by no more than 20% from the previous measurement;
 - d) The most recent measurement of the real or imaginary parts of the impedance, measured at least annually is within 5Ω from the previous measurement.
 - 2) Network analyzer probe calibration against air, distilled water and a short block performed before measuring liquid parameters.

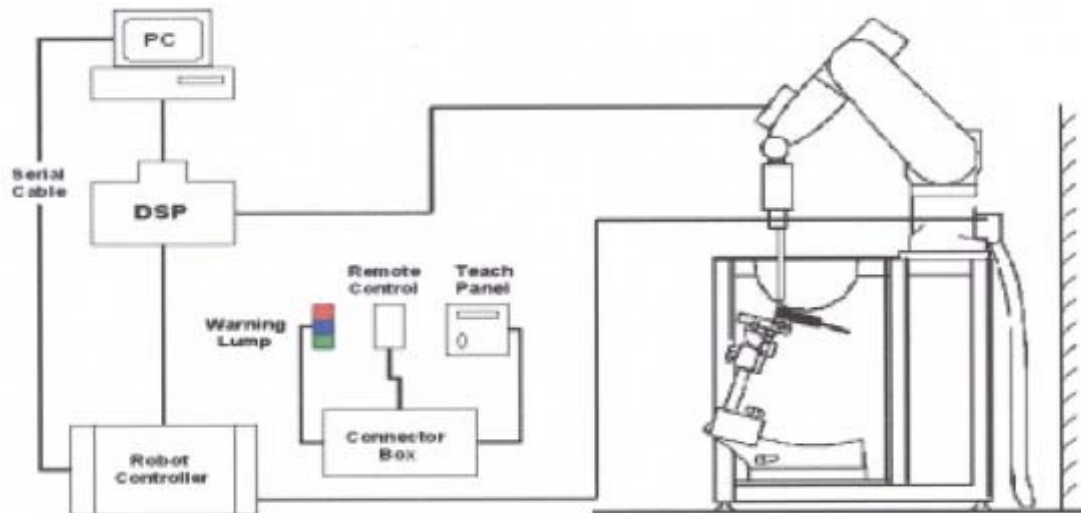
3. SAR MEASUREMENTS SYSTEM CONFIGURATION

3.1 SAR MEASUREMENT SET-UP

The DASY5 system for performing compliance tests consists of the following items:

1. A standard high precision 6-axis robot (Stäubli RX family) with controller and software. An arm extension for accommodating the data acquisition electronics (DAE).
2. A dosimetric probe, i.e. an isotropic E-field probe optimized and calibrated for usage in tissue simulating liquid. The probe is equipped with an optical surface detector system.
3. A data acquisition electronic (DAE) which performs the signal amplification, signal multiplexing, AD-conversion, offset measurements, mechanical surface detection, collision detection, etc. The unit is battery powered with standard or rechargeable batteries. The signal is optically transmitted to the EOC.
4. A unit to operate the optical surface detector which is connected to the EOC.
5. The Electro-Optical Coupler (EOC) performs the conversion from the optical into a digital electric signal of the DAE. The EOC is connected to the DASY5 measurement server.
6. The DASY5 measurement server, which performs all real-time data evaluation for field measurements and surface detection, controls robot movements and handles safety operation. A computer operating Windows.
7. DASY5 software and SEMCAD data evaluation software.
8. Remote control with teach panel and additional circuitry for robot safety such as warning lamps, etc.
9. The generic twin phantom enabling the testing of left-hand and right-hand usage.
10. The device holder for handheld mobile phones.
11. Tissue simulating liquid mixed according to the given recipes.
12. System validation dipoles allowing to validate the proper functioning of the system.

3.1.1 TEST SETUP LAYOUT



3.2 DASY5 E-FIELD PROBE SYSTEM

The SAR measurements were conducted with the dosimetric probe EX3DV4 and ES3DV3 (manufactured by SPEAG), designed in the classical triangular configuration and optimized for dosimetric evaluation.

3.2.1 PROBE SPECIFICATION

EX3DV4

Construction	Symmetrical design with triangular core Interleaved sensors Built-in shielding against static charges PEEK enclosure material (resistant to organic solvents, e.g., DGBE)
Calibration	ISO/IEC 17025 calibration service available
Frequency	10 MHz to 6 GHz Linearity: ± 0.2 dB (30 MHz to 6 GHz)
Directivity	± 0.3 dB in HSL (rotation around probe axis) ± 0.5 dB in tissue material (rotation normal to probe axis)
Dynamic Range	10 μ W/g to > 100 mW/g Linearity: ± 0.2 dB
Dimensions	Overall length: 330 mm (Tip: 20 mm) Tip diameter: 2.5 mm (Body: 12 mm) Distance from probe tip to dipole centers: 1.0 mm

ES3DV3

Construction	Symmetrical design with triangular core Interleaved sensors Built-in shielding against static charges PEEK enclosure material (resistant to organic solvents, e.g., DGBE)
Calibration	ISO/IEC 17025 calibration service available
Frequency	10 MHz to 4 GHz Linearity: ± 0.2 dB (30 MHz to 4 GHz)
Directivity	± 0.3 dB in HSL (rotation around probe axis) ± 0.5 dB in tissue material (rotation normal to probe axis)
Dynamic Range	5 μ W/g to > 100 mW/g Linearity: ± 0.2 dB
Dimensions	Overall length: 330 mm (Tip: 20 mm) Tip diameter: 4 mm (Body: 12 mm) Distance from probe tip to dipole centers: 1.0 mm



E-field Probe

3.2.2 E-FIELD PROBE CALIBRATION

Each probe is calibrated according to a dosimetric assessment procedure with accuracy better than $\pm 10\%$. The spherical isotropy was evaluated and found to be better than $\pm 0.25\text{dB}$. The sensitivity parameters (NormX, NormY, NormZ), the diode compression parameter (DCP) and the conversion factor (ConvF) of the probe are tested.

The free space E-field from amplified probe outputs is determined in a test chamber. This is performed in a TEM cell for frequencies below 1 GHz, and in a wave guide above 1 GHz for free space. For the free space calibration, the probe is placed in the volumetric center of the cavity and at the proper orientation with the field. The probe is then rotated 360 degrees.

E-field temperature correlation calibration is performed in a flat phantom filled with the appropriate simulated brain tissue. The measured free space E-field in the medium correlates to temperature rise in a dielectric medium. For temperature correlation calibration a RF transparent thermostat-based temperature probe is used in conjunction with the E-field probe.

$$\text{SAR} = C \frac{\Delta T}{\Delta t}$$

Where: Δt =Exposure time (30 seconds),

C =Heat capacity of tissue (brain or muscle),

ΔT =Temperature increase due to RF exposure.

Or
$$\text{SAR} = \frac{|E|^2 \sigma}{\rho}$$

Where: σ = Simulated Tissue Conductivity,

ρ =Tissue density (kg/m³).


3.2.3 OTHER TEST EQUIPMENT

3.2.3.1 Device Holder for Transmitters

Construction: Simple but effective and easy-to-use extension for Mounting Device that facilitates the testing of larger devices (e.g., laptops, cameras, etc.) It is light weight and fits easily on the upper part of the Mounting Device in place of the phone positioner. The extension is fully compatible with the Twin SAM, ELI and SAM v6.0 Phantoms.

Material: POM, Acrylic glass, Foam

3.2.3.2 Phantom

Model	ELI Phantom	
Construction	Phantom for compliance testing of handheld and body-mounted wireless devices in the frequency range of 30 MHz to 6 GHz. ELI is fully compatible with the IEC 62209-2 standard and all known tissue simulating liquids. ELI has been optimized regarding its performance and can be integrated into our standard phantom tables. A cover prevents evaporation of the liquid. Reference markings on the phantom allow installation of the complete setup, including all predefined phantom positions and measurement grids, by teaching three points. The phantom is compatible with all SPEAG dosimetric probes and dipoles.	
Shell Thickness	2±0.1 mm	
Filling Volume	Approx. 30 liters	
Dimensions	Length: 600 mm; Width: 190mm Height: adjustable feet	
Available	Special	

3.2.4 SCANNING PROCEDURE

The DASY5 installation includes predefined files with recommended procedures for measurements and validation. They are read-only document files and destined as fully defined but unmeasured masks. All test positions (head or body-worn) are tested with the same configuration of test steps differing only in the grid definition for the different test positions.

The “reference” and “drift” measurements are located at the beginning and end of the batch process. They measure the field drift at one single point in the liquid over the complete procedure. The indicated drift is mainly the variation of the DUT’s output power and should vary max. $\pm 5\%$.

The “surface check” measurement tests the optical surface detection system of the DASY5 system by repeatedly detecting the surface with the optical and mechanical surface detector and comparing the results. The output gives the detecting heights of both systems, the difference between the two systems and the standard deviation of the detection repeatability. Air bubbles or refraction in the liquid due to separation of the sugar-water mixture gives poor repeatability (above $\pm 0.1\text{mm}$). To prevent wrong results tests are only executed when the liquid is free of air bubbles. The difference between the optical surface detection and the actual surface depends on the probe and is specified with each probe. (It does not depend on the surface reflectivity or the probe angle to the surface within $\pm 30^\circ$.)

- Area Scan

The “area scan” measures the SAR above the DUT or verification dipole on a parallel plane to the surface. It is used to locate the approximate location of the peak SAR with 2D spline interpolation. The robot performs a stepped movement along one grid axis while the local electrical field strength is measured by the probe. The probe is touching the surface of the SAM during acquisition of measurement values. The standard scan uses large grid spacing for faster measurement. Standard grid spacing for head measurements is 15 mm in x- and y-dimension ($\leq 2\text{GHz}$), 12 mm in x- and y-dimension (2-4 GHz) and 10mm in x- and y-dimension (4-6GHz). If a finer resolution is needed, the grid spacing can be reduced. Grid spacing and orientation have no influence on the SAR result. For special applications where the standard scan method does not find the peak SAR within the grid, e.g. mobile phones with flip cover, the grid can be adapted in orientation.

- Zoom Scan

A “zoom scan” measures the field in a volume around the 2D peak SAR value acquired in the previous “coarse” scan. This is a fine grid with maximum scan spatial resolution: $\Delta x_{\text{zoom}}, \Delta y_{\text{zoom}} \leq 2\text{GHz} - \leq 8\text{mm}$, 2-4GHz - $\leq 5\text{ mm}$ and 4-6 GHz - $\leq 4\text{mm}$; $\Delta z_{\text{zoom}} \leq 3\text{GHz} - \leq 5\text{ mm}$, 3-4 GHz - $\leq 4\text{mm}$ and 4-6GHz - $\leq 2\text{mm}$ where the robot additionally moves the probe along the z-axis away from the bottom of the Phantom. DASY is also able to perform repeated zoom scans if more than 1 peak is found during area scan. In this document, the evaluated peak 1g and 10g averaged SAR values are shown in the 2D-graphics in Appendix B. Test results relevant for the specified standard (see chapter 1.4.) are shown in table form in chapter 7.2.

A Z-axis scan measures the total SAR value at the x-and y-position of the maximum SAR value found during the cube scan. The probe is moved away in z-direction from the bottom of the SAM phantom in 2 mm steps. This measurement shows the continuity of the liquid and can - depending in the field strength – also show the liquid depth.

The following table summarizes the area scan and zoom scan resolutions per FCC KDB 865664D01:

Frequency	Maximun Area Scan resolution ($\Delta x_{\text{area}}, \Delta y_{\text{area}}$)	Maximun Zoom Scan spatial resolution ($\Delta x_{\text{Zoom}}, \Delta y_{\text{Zoom}}$)	Maximun Zoom Scan spatial resolution			Minimum zoom scan volume (x,y,z)
			Uniform Grid	Graded Grad		
			$\Delta z_{\text{Zoom}}(n)$	$\Delta z_{\text{Zoom}}(1)^*$	$\Delta z_{\text{Zoom}}(n>1)^*$	
$\leq 2\text{GHz}$	$\leq 15\text{mm}$	$\leq 8\text{mm}$	$\leq 5\text{mm}$	$\leq 4\text{mm}$	$\leq 1.5^* \Delta z_{\text{Zoom}}(n-1)$	$\geq 30\text{mm}$
2-3GHz	$\leq 12\text{mm}$	$\leq 5\text{mm}$	$\leq 5\text{mm}$	$\leq 4\text{mm}$	$\leq 1.5^* \Delta z_{\text{Zoom}}(n-1)$	$\geq 30\text{mm}$
3-4GHz	$\leq 12\text{mm}$	$\leq 5\text{mm}$	$\leq 4\text{mm}$	$\leq 3\text{mm}$	$\leq 1.5^* \Delta z_{\text{Zoom}}(n-1)$	$\geq 28\text{mm}$
4-5GHz	$\leq 10\text{mm}$	$\leq 4\text{mm}$	$\leq 3\text{mm}$	$\leq 2.5\text{mm}$	$\leq 1.5^* \Delta z_{\text{Zoom}}(n-1)$	$\geq 25\text{mm}$
5-6GHz	$\leq 10\text{mm}$	$\leq 4\text{mm}$	$\leq 2\text{mm}$	$\leq 2\text{mm}$	$\leq 1.5^* \Delta z_{\text{Zoom}}(n-1)$	$\geq 22\text{mm}$

3.2.5 SPATIAL PEAK SAR EVALUATION

The spatial peak SAR - value for 1 and 10 g is evaluated after the Cube measurements have been done. The basis of the evaluation are the SAR values measured at the points of the fine cube grid consisting of 5 x 5 x 7 points (with 8mm horizontal resolution) or 7 x 7 x 7 points (with 5mm horizontal resolution) or 8 x 8 x 7 points (with 4mm horizontal resolution). The algorithm that finds the maximal averaged volume is separated into three different stages.

- The data between the dipole center of the probe and the surface of the phantom are extrapolated. This data cannot be measured since the center of the dipole is 2.7 mm away from the tip of the probe and the distance between the surface and the lowest measuring point is about 1 mm (see probe calibration sheet). The extrapolated data from a cube measurement can be visualized by selecting "Graph Evaluated".
- The maximum interpolated value is searched with a straight-forward algorithm. Around this maximum the SAR - values averaged over the spatial volumes (1g or 10 g) are computed using the 3d-spline interpolation algorithm. If the volume cannot be evaluated (i.e., if a part of the grid was cut off by the boundary of the measurement area) the evaluation will be started on the corners of the bottom plane of the cube.
- All neighboring volumes are evaluated until no neighboring volume with a higher average value is found.

Extrapolation

The extrapolation is based on a least square algorithm [W. Gander, Computer mathematic, p.168-180]. Through the points in the first 3 cm along the z-axis, polynomials of order four are calculated. These polynomials are then used to evaluate the points between the surface and the probe tip. The points, calculated from the surface, have a distance of 1 mm from each other.

Interpolation

The interpolation of the points is done with a 3d-Spline. The 3d-Spline is composed of three one-dimensional splines with the "Not a knot"-condition [W. Gander, Computer mathematic, p.141-150] (x, y and z -direction) [Numerical Recipes in C, Second Edition, p.123ff].

Volume Averaging

At First the size of the cube is calculated. Then the volume is integrated with the trapezoidal algorithm. 8000 points (20x20x20) are interpolated to calculate the average.

Advanced Extrapolation

DASY5 uses the advanced extrapolation option which is able to compensate boundary effects on E-field probes.

3.2.6 DATA STORAGE AND EVALUATION

3.2.6.1 Data Storage

The DASY5 software stores the acquired data from the data acquisition electronics as raw data (in microvolt readings from the probe sensors), together with all necessary software parameters for the data evaluation (probe calibration data, liquid parameters and device frequency and modulation data) in measurement files with the extension "DAE". The software evaluates the desired unit and format for output each time the data is visualized or exported. This allows verification of the complete software setup even after the measurement and allows correction of incorrect parameter settings. For example, if a measurement has been performed with a wrong crest factor parameter in the device setup, the parameter can be corrected afterwards and the data can be re-evaluated.

The measured data can be visualized or exported in different units or formats, depending on the selected probe type ([V/m], [A/m], [°C], [mW/g], [mW/cm²], [dBrel], etc.). Some of these units are not available in certain situations or show meaningless results, e.g., a SAR output in a lossless media will always be zero. Raw data can also be exported to perform the evaluation with other software packages.

3.2.7 DATA EVALUATION BY SEMCAD

The SEMCAD software automatically executes the following procedures to calculate the field units from the microvolt readings at the probe connector. The parameters used in the evaluation are stored in the configuration modules of the software:

Probe parameters:	Sensitivity	Normi, ai0, ai1, ai2
	Conversion factor	ConvFi
	Diode compression point	Dcpj
Device parameters:	Frequency	f
	Crest factor	cf
Media parameters:	Conductivity	
	Density	

These parameters must be set correctly in the software. They can be found in the component documents or they can be imported into the software from the configuration files issued for the DASY5 components. In the direct measuring mode of the multi meter option, the parameters of the actual system setup are used. In the scan visualization and export modes, the parameters stored in the corresponding document files are used.

The first step of the evaluation is a linearization of the filtered input signal to account for the compression characteristics of the detector diode. The compensation depends on the input signal, the diode type and the DC-transmission factor from the diode to the evaluation electronics.

If the exciting field is pulsed, the crest factor of the signal must be known to correctly compensate for peak power. The formula for each channel can be given as:

$$V_i = U_i + U_i^2 \cdot cf / dcp_i$$

With	V_i = compensated signal of channel i	(i = x, y, z)
	U_i = input signal of channel i	(i = x, y, z)
	cf = crest factor of exciting field	(DASY parameter)
	dcp _i = diode compression point	(DASY parameter)

From the compensated input signals the primary field data for each channel can be evaluated:

$$\text{E-field probes: } E_i = (V_i / \text{Norm}_i \cdot \text{ConvF})^{1/2}$$

$$\text{H-field probes: } H_i = (V_i)^{1/2} \cdot (a_{i0} + a_{i1} f + a_{i2} f^2) / f$$

With V_i = compensated signal of channel i ($i = x, y, z$)

Norm_i = sensor sensitivity of channel i ($i = x, y, z$)
[mV/(V/m)²] for E-field Probes

ConvF = sensitivity enhancement in solution

a_{ij} = sensor sensitivity factors for H-field probes

f = carrier frequency [GHz]

E_i = electric field strength of channel i in V/m

H_i = magnetic field strength of channel i in A/m

The RSS value of the field components gives the total field strength (Hermitian magnitude):

$$E_{\text{tot}} = (E_x^2 + E_y^2 + E_z^2)^{1/2}$$

The primary field data are used to calculate the derived field units.

$$\text{SAR} = (E_{\text{tot}})^2 \cdot \sigma / (\rho \cdot 1000)$$

With SAR = local specific absorption rate in mW/g

E_{tot} = total field strength in V/m
= conductivity in [mho/m] or [Siemens/m]
= equivalent tissue density in g/cm³

Note that the density is normally set to 1 (or 1.06), to account for actual brain density rather than the density of the simulation liquid. The power flow density is calculated assuming the excitation field to be a free space field.

$$P_{\text{pwe}} = E_{\text{tot}}^2 / 3770 \text{ or } P_{\text{pwe}} = H_{\text{tot}}^2 \cdot 37.7$$

With P_{pwe} = equivalent power density of a plane wave in mW/cm²

E_{tot} = total field strength in V/m

H_{tot} = total magnetic field strength in A/m

4. SYSTEM VERIFICATION PROCEDURE

4.1 TISSUE VERIFICATION

The simulating liquids should be checked at the beginning of a series of SAR measurements to determine if the dielectric parameters are within the tolerances of the specified target values. The measured conductivity and relative permittivity should be within $\pm 5\%$ of the target values.

The following materials are used for producing the tissue-equivalent materials.

Tissue Type	Bactericide	DGBE	HEC	NaCl	Sucrose	Triton X-100	Water	Diethylene Glycol Mono-hexylether
Head 2450	-	45.0	-	0.1	-	-	54.9	-
Head 5G	-	-	-	-	-	17.2	65.5	17.3

Salt: 99+% Pure Sodium Chloride; Sugar: 98+% Pure Sucrose; Water: De-ionized, 16M + resistivity
 HEC: Hydroxyethyl Cellulose; DGBE: 99+% Di(ethylene glycol) butyl ether, [2-(2-butoxyethoxy)ethanol]
 Triton X-100(ultra pure): Polyethylene glycol mono [4-(1,1,3,3-tetramethylbutyl)phenyl]ether

Tissue Verification									
Tissue Type	Frequency (MHz)	Liquid Temp. (°C)	Conductivity (σ)	Permittivity (ϵ_r)	Targeted Conductivity (σ)	Targeted Permittivity (ϵ_r)	Deviation Conductivity (σ) (%)	Deviation Permittivity (ϵ_r) (%)	Date
Head	2450	22.5	1.842	38.176	1.80	39.2	2.33	-2.61	Mar. 18, 2021
Head	2450	22.3	1.820	38.480	1.80	39.2	1.11	-1.84	Mar. 27, 2021
Head	5200	22.3	4.673	36.179	4.66	36.0	0.28	0.50	Mar. 20, 2021
Head	5300	22.3	4.793	35.914	4.76	35.9	0.69	0.04	Mar. 20, 2021
Head	5500	22.3	5.027	35.401	4.96	35.6	1.35	-0.56	Mar. 20, 2021
Head	5600	22.3	5.158	35.130	5.07	35.5	1.74	-1.04	Mar. 20, 2021
Head	5800	22.3	5.432	34.667	5.27	35.3	3.07	-1.79	Mar. 20, 2021

Note:

- 1)The dielectric parameters of the tissue-equivalent liquid should be measured under similar ambient conditions and within 2 °C of the conditions expected during the SAR evaluation to satisfy protocol requirements.
- 2)KDB 865664 was ensured to be applied for probe calibration frequencies greater than or equal to 50MHz of the EUT frequencies.
- 3)The above measured tissue parameters were used in the DASY software to perform interpolation via the DASY software to determine actual dielectric parameters at the test frequencies. The SAR test plots may slightly differ from the table above since the DASY rounds to three significant digits.

4.2 SYSTEM CHECK

The system check is performed for verifying the accuracy of the complete measurement system and performance of the software. The system check is performed with tissue equivalent material according to IEEE P1528 (described above). The following table shows system check results for all frequency bands and tissue liquids used during the tests.

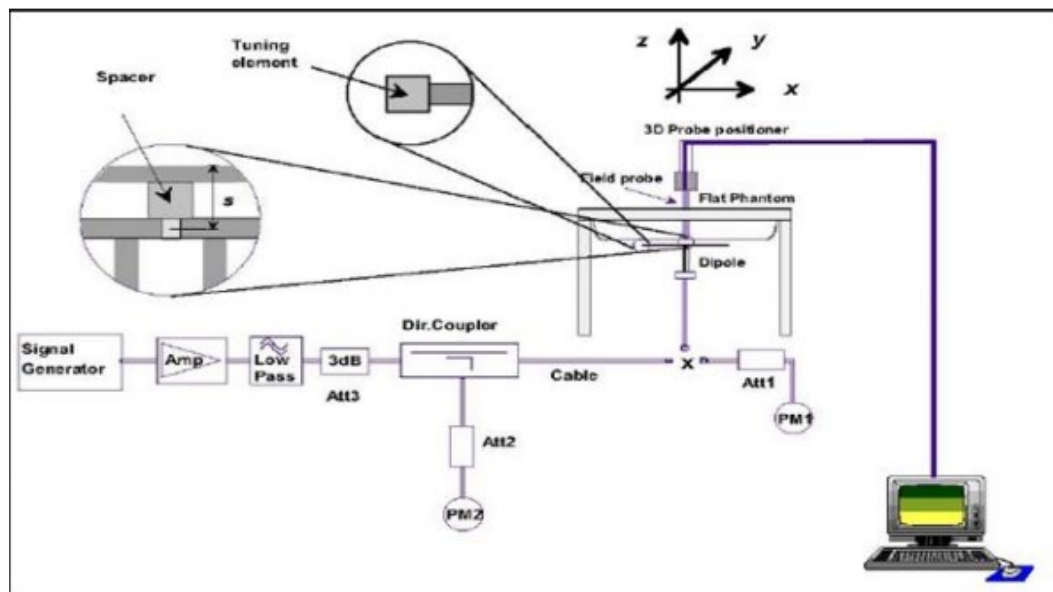
System Check	Date	Frequency (MHz)	Targeted SAR 1g (W/kg)	Measured SAR 1g (W/kg)	normalized SAR 1g (W/kg)	Deviation 1g (%)	Dipole S/N
Head	Mar. 18, 2021	2450	52.10	13.20	52.80	1.34	919
Head	Mar. 27, 2021	2450	52.10	12.90	51.60	-0.96	919
Head	Mar. 20, 2021	5200	75.30	7.68	76.80	1.99	1160
Head	Mar. 20, 2021	5300	76.80	7.92	79.20	3.13	1160
Head	Mar. 20, 2021	5500	80.80	8.39	83.90	3.84	1160
Head	Mar. 20, 2021	5600	78.60	8.15	81.50	3.69	1160
Head	Mar. 20, 2021	5800	77.90	7.98	79.80	2.44	1160

4.3 SYSTEM CHECK PROCEDURE

The system check is performed by using a system check dipole which is positioned parallel to the planar part of the SAM phantom at the reference point. The distance of the dipole to the SAM phantom is determined by a plexiglass spacer. The dipole is connected to the signal source consisting of signal generator and amplifier via a directional coupler, N-connector cable and adaption to SMA. It is fed with a power of 250 mW (below 3GHz) or 100mW (3-6GHz). To adjust this power a power meter is used.

The power sensor is connected to the cable before the system check to measure the power at this point and do adjustments at the signal generator. At the outputs of the directional coupler both return loss as well as forward power are controlled during the system check to make sure that emitted power at the dipole is kept constant. This can also be checked by the power drift measurement after the test.

System check results have to be equal or near the values determined during dipole calibration (target SAR in table above) with the relevant liquids and test system ($\pm 10\%$).



5. SAR MEASUREMENT VARIABILITY AND UNCERTAINTY

5.1 SAR MEASUREMENT VARIABILITY

Per KDB865664 D01 SAR measurement 100 MHz to 6 GHz, SAR measurement variability must be assessed for each frequency band, which is determined by the SAR probe calibration point and tissue-equivalent medium used for the device measurements. The additional measurements are repeated after the completion of all measurements requiring the same head or body tissue-equivalent medium in a frequency band. The test device should be returned to ambient conditions (normal room temperature) with the battery fully charged before it is re-mounted on the device holder for the repeated measurement(s) to minimize any unexpected variations in the repeated results.

- 1) Repeated measurement is not required when the original highest measured SAR is < 0.80 W/kg; steps 2) through 4) do not apply.
- 2) When the original highest measured SAR is ≥ 0.80 W/kg, repeat that measurement once.
- 3) Perform a second repeated measurement only if the ratio of largest to smallest SAR for the original and first repeated measurements is > 1.20 or when the original or repeated measurement is ≥ 1.45 W/kg ($\sim 10\%$ from the 1-g SAR limit).
- 4) Perform a third repeated measurement only if the original, first or second repeated measurement is ≥ 1.5 W/kg and the ratio of largest to smallest SAR for the original, first and second repeated measurements is > 1.20 .

The same procedures should be adapted for measurements according to extremity and occupational exposure limits by applying a factor of 2.5 for extremity exposure and a factor of 5 for occupational exposure to the corresponding SAR thresholds.

The detailed repeated measurement results are shown in section 7.2.

6. OPERATIONAL CONDITIONS DURING TEST

6.1 SAR TEST CONFIGURATION

6.1.1 WIFI TEST CONFIGURATION

For WLAN / BT SAR testing, WLAN / BT engineering testing software installed on the DUT can provide continuous transmitting RF signal.

2.4G

Mode	802.11b	802.11g	802.11n (HT20/40)	802.11ax (HE20/40)	BT / BLE
Duty cycle	100%				
Crest factor	1				

5G

Mode	802.11a	802.11n (HT20/40)	802.11ac (VHT20/40/80)	802.11ax (HE20/40/80)
Duty cycle	100%			
Crest factor	1			

For WiFi SAR testing, a communication link is set up with the test mode software for WiFi mode test. During the test, at the each test frequency channel, the EUT is operated at the RF continuous emission mode. The test procedures in KDB 248227 D01 are applied.

6.1.1.1 2.4G SAR Test Requirements

802.11b DSSS SAR Test Requirements

SAR is measured for 2.4 GHz 802.11b DSSS using either a fixed test position or, when applicable, the initial test position procedure. SAR test reduction is determined according to the following:

- 1) When the reported SAR of the highest measured maximum output power channel for the exposure configuration is ≤ 0.8 W/kg, no further SAR testing is required for 802.11b DSSS in that exposure configuration.
- 2) When the reported SAR is > 0.8 W/kg, SAR is required for that exposure configuration using the next highest measured output power channel. When any reported SAR is > 1.2 W/kg, SAR is required for the third channel; i.e., all channels require testing.

2.4 GHz 802.11g/n OFDM SAR Test Exclusion Requirements

When SAR measurement is required for 2.4 GHz 802.11g/n OFDM configurations, the measurement and test reduction procedures for OFDM are applied. SAR is not required for the following 2.4 GHz OFDM conditions.

- 1) When KDB Publication 447498 SAR test exclusion applies to the OFDM configuration.
- 2) When the highest reported SAR for DSSS is adjusted by the ratio of OFDM to DSSS specified maximum output power and the adjusted SAR is ≤ 1.2 W/kg.

SAR Test Requirements for OFDM configurations

When SAR measurement is required for 2.4 GHz 802.11g/n OFDM configurations, each stand alone. And frequency aggregated band is considered separately for SAR test reduction. In applying the initial test configuration and subsequent test configuration procedures, the 802.11 transmission configuration with the highest specified maximum output power and the channel within a test configuration with the highest measured maximum output power should be clearly distinguished to apply the procedures.

6.1.1.2 5G SAR Test Requirements

U-NII-1 and U-NII-2A Band

For devices that operate in both U-NII-1 and U-NII-2A bands, when the same maximum output power is specified for both bands, begin SAR measurement in U-NII-2A band by applying the OFDM SAR requirements. If the highest reported SAR for a test configuration is ≤ 1.2 W/kg, SAR is not required for U-NII-1 band for that configuration (802.11 mode and exposure condition); otherwise, both bands are tested independently for SAR. When different maximum output power is specified for the bands, begin SAR measurement in the band with higher specified maximum output power. The highest reported SAR for the tested configuration is adjusted by the ratio of lower to higher specified maximum output power for the two bands. When the adjusted SAR is ≤ 1.2 W/kg, SAR is not required for the band with lower maximum output power in that test configuration; otherwise, both bands are tested independently for SAR.

U-NII-2C, U-NII-3 Bands

The frequency range covered by these bands is 380 MHz (5.47 – 5.85 GHz), which requires a minimum of at least two SAR probe calibration frequency points to support SAR measurements. When Terminal Doppler Weather Radar (TDWR) restriction applies, the channels at 5.60 – 5.65 GHz in U-NII-2C band must be disabled with acceptable mechanisms and documented in the equipment certification.

Unless band gap channels are permanently disabled, they must be considered for SAR testing.

To maintain SAR measurement accuracy and to facilitate test reduction, the channels in U-NII-2C band above 5.65 GHz may be grouped with the 5.8 GHz channels in U-NII-3 or §15.247 band to enable two SAR probe calibration frequency points to cover the bands, including the band gap channels.¹¹ When band gap channels are supported and the bands are not aggregated for SAR testing, band gap channels must be considered independently in each band according to the normally required OFDM SAR measurement and probe calibration frequency points requirements.

6.1.1.3 OFDM transmission mode and SAR test channel selection

For the 2.4GHz and 5GHz bands, when the same maximum output power was specified for multiple OFDM transmission mode configurations in a frequency band or aggregated band, SAR is measured using the configuration with the largest channel bandwidth, lowest order modulation and lowest data rate. When the maximum output power of a channel is the same for equivalent OFDM configurations (for example 802.11a, 802.11n and 802.11ac, or 802.11g and 802.11n, with the same channel bandwidth, modulation, and data rate, etc.), the lower order 802.11 mode (i.e. 802.11a then 802.11n and 802.11ac, or 802.11g then 802.11n) is used for SAR measurement. When the maximum output power are the same for multiple test channels, either according to the default or additional power measurement requirements, SAR is measured using the channel closest to the middle of the frequency band or aggregated band. When there are multiple channels with the same maximum output power, SAR is measured using the higher number channel.

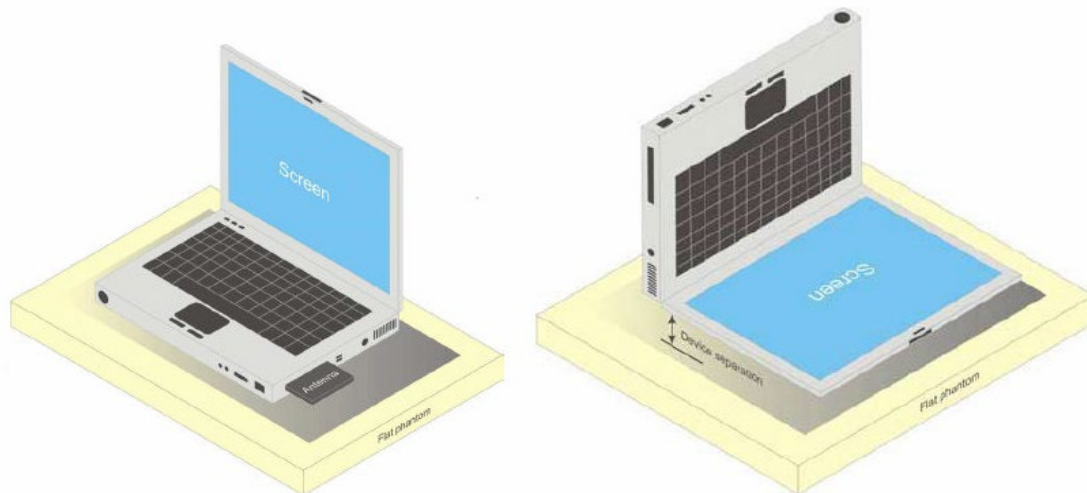
6.1.1.4 Initial test configuration procedure

For OFDM, in both 2.4GHz and 5GHz bands, an initial test configuration is determined for each frequency band and aggregated band, according to the transmission mode with the highest maximum output power specified for SAR measurements. When the same maximum output power is specified for multiple OFDM transmission mode configurations in a frequency band or aggregated band, SAR is measured using the configuration(s) with the largest channel bandwidth, lowest order modulation, and lowest data rate. If the average RF output powers of the highest identical transmission modes are within 0.25 dB of each other, mid channel of the transmission mode with highest average RF output powers is the initial test channel. Otherwise, the channel of the transmission mode with the highest average RF output power will be the initial test configuration.

When the reported SAR is ≤ 0.8 W/kg, no additional measurements on other test channels are required. Otherwise, SAR is evaluated using the subsequent highest average RF output channel until the reported SAR result is ≤ 1.2 W/kg or all channels are measured. When there are multiple untested channels having the same subsequent highest average RF output power, the channel with higher frequency from the lowest 802.11 mode is considered for SAR measurement.

6.2 TEST POSITION

This DUT was tested in 2 different positions. They are back of keyboard and back of screen as illustrated below:



a) Portable computer with back of keyboard and back of screen.

SAR testing to ensure safety of bystanders or people other than the user is not specifically covered in the harmonized standards but it is a consideration for declaration of compliance to the Directive.

Therefore, the manufacturer is encouraged to ensure that the RF exposure and SAR assessments do cover the safety of all persons, during the normal intended use of the device. For example, this may apply to a device where normal intended use could locate the transmitting antenna at a safe distance from the user but a closer distance to other persons located or standing nearby.

Therefore, we tested the position at the back of the screen, which is bystander SAR. Since the integrated antenna is located at the back of the display screen, the test distance we tested is 25mm.

7. TEST RESULT

7.1 CONDUCTED POWER RESULTS

7.1.1 CONDUCTED POWER MEASUREMENTS OF BT

BT	Average Conducted Power(dBm)			
	Max.	CH0	CH39	CH78
	Tune up	2402MHz	2441MHz	2480MHz
DH5	12.50	10.86	11.15	11.78
2DH5	12.50	10.68	11.03	11.55
3DH5	12.50	10.65	10.97	11.46

BT	Average Conducted Power(dBm)			
	Max.	CH0	CH19	CH39
	Tune up	2402MHz	2441MHz	2480MHz
BLE(1M)	12.50	10.65	11.03	11.50
BLE(2M)	12.50	10.94	11.25	11.47

Note:

- 1) The Average conducted power of BT is measured with RMS detector.
- 2) The tested channel results are marks in bold.

7.1.2 CONDUCTED POWER MEASUREMENTS OF WIFI 2.4G

Band	Mode	Channel	Frequency (MHz)	Data Rate (Mbps)	Max. Tune up	Average Power(dBm)
2.4G WIFI _1TX _ANT S1	802.11b	1	2412	1	15.00	14.92
		6	2437		15.00	14.81
		11	2462		15.00	14.61
		12	2467		15.00	14.55
		13	2472		15.00	14.52
	802.11g	1	2412	6	15.00	14.67
		6	2437		15.00	14.84
		11	2462		15.00	14.71
		12	2467		15.00	14.60
		13	2472		15.00	14.58
	802.11n HT20	1	2412	MCS0	15.00	14.81
		6	2437		15.00	14.65
		11	2462		15.00	14.61
		12	2467		15.00	14.71
		13	2472		15.00	14.92
	802.11n HT40	3	2422	MCS0	15.00	14.62
		6	2437		15.00	14.96
		9	2452		15.00	14.89
		10	2457		15.00	14.85
		11	2462		15.00	14.89
	802.11ax HE20	1	2412	MCS0	15.00	14.54
		6	2437		15.00	14.76
		11	2462		15.00	14.71
		12	2467		15.00	14.52
		13	2472		15.00	14.60
	802.11ax HE40	3	2422	MCS0	15.00	14.52
		6	2437		15.00	14.69
		9	2452		15.00	14.66
		10	2457		15.00	14.76
		11	2462		15.00	14.55

Band	Mode	Channel	Frequency (MHz)	Data Rate (Mbps)	Max. Tune up	Average Power(dBm)
2.4G WIFI _1TX _ANT S0	802.11b	1	2412	1	15.00	14.87
		6	2437		15.00	14.94
		11	2462		15.00	14.71
		12	2467		15.00	14.64
		13	2472		15.00	14.62
	802.11g	1	2412	6	15.00	14.87
		6	2437		15.00	14.78
		11	2462		15.00	14.50
		12	2467		15.00	14.83
		13	2472		15.00	14.91
	802.11n HT20	1	2412	MCS0	15.00	14.78
		6	2437		15.00	14.84
		11	2462		15.00	14.71
		12	2467		15.00	14.66
		13	2472		15.00	14.56
	802.11n HT40	3	2422	MCS0	15.00	14.88
		6	2437		15.00	14.72
		9	2452		15.00	14.68
		10	2457		15.00	14.63
		11	2462		15.00	14.64
	802.11ax HE20	1	2412	MCS0	15.00	14.58
		6	2437		15.00	14.95
		11	2462		15.00	14.77
		12	2467		15.00	14.89
		13	2472		15.00	14.72
	802.11ax HE40	3	2422	MCS0	15.00	14.56
		6	2437		15.00	14.51
		9	2452		15.00	14.81
		10	2457		15.00	14.88
		11	2462		15.00	14.79

Band	Mode	Channel	Frequency (MHz)	Data Rate (Mbps)	ANTS0 Average Power(dBm)	ANT S1 Average Power(dBm)	Max. Tune up	Total Average Power(dBm)
2.4G WIFI _2TX _ANT S0+S1	802.11b	1	2412	1	14.57	14.56	18.00	17.58
		7	2442		14.68	14.56	18.00	17.63
		11	2462		14.76	14.58	18.00	17.68
		12	2467		14.69	14.67	18.00	17.69
		13	2472		14.59	14.59	18.00	17.60
	802.11g	1	2422	6	14.67	14.59	18.00	17.64
		7	2442		14.79	14.56	18.00	17.69
		11	2452		14.67	14.72	18.00	17.71
		12	2457		14.98	14.67	18.00	17.84
		13	2462		14.87	14.89	18.00	17.89
	802.11n HT20	1	2412	MCS8	14.59	14.68	18.00	17.65
		7	2442		14.68	14.62	18.00	17.66
		11	2462		14.59	14.51	18.00	17.56
		12	2467		14.57	14.69	18.00	17.64
		13	2472		14.67	14.68	18.00	17.69
	802.11n HT40	3	2422	MCS8	14.68	14.67	18.00	17.69
		6	2437		14.69	14.68	18.00	17.70
		9	2452		14.75	14.67	18.00	17.72
		10	2457		14.59	14.59	18.00	17.60
		11	2462		14.53	14.59	18.00	17.57
	802.11ax HE20	1	2412	MCS8	14.60	14.49	18.00	17.56
		6	2437		14.59	14.51	18.00	17.56
		11	2462		14.47	14.42	18.00	17.46
		12	2467		14.51	14.62	18.00	17.58
		13	2472		14.49	14.30	18.00	17.41
	802.11ax HE40	3	2422	MCS8	14.34	14.34	18.00	17.35
		6	2437		14.34	14.15	18.00	17.26
		9	2452		14.45	14.37	18.00	17.42
		10	2457		14.12	14.02	18.00	17.08
		11	2462		14.00	14.26	18.00	17.14

Note:

- 1) The Average conducted power of WiFi 2.4G is measured with RMS detector.
- 2) Per KDB248227 D01, for WiFi 2.4G, the highest measured maximum output power Channel for DSSS modes (802.11b) was selected for SAR measurement. SAR for OFDM modes (2.4GHz 802.11g/n/ax) was not required When the highest reported SAR for DSSS is adjusted by the ratio of OFDM modes (802.11g/n/ax) to DSSS modes (802.11b) specified maximum output power and the adjusted SAR is ≤ 1.2 W/kg.
- 3) The tested channel results are marks in bold.

7.1.3 CONDUCTED POWER MEASUREMENTS OF WIFI 5.2G

Band	Mode	Channel	Frequency (MHz)	Data Rate (Mbps)	Max. Tune up	Average Power(dBm)
5.2G WIFI _1TX _ANT S1	802.11a	36	5180	6	14.00	13.78
		40	5200		14.00	13.85
		44	5220		14.00	13.61
		48	5240		14.00	13.59
	802.11n HT20	36	5180	MCS0	14.00	13.96
		40	5200		14.00	13.54
		44	5220		14.00	13.51
		48	5240		14.00	13.94
	802.11n HT40	38	5190	MCS0	14.00	13.66
		46	5230		14.00	13.63
	802.11ac VHT20	36	5180	MCS0	14.00	13.96
		40	5200		14.00	13.91
		44	5220		14.00	13.89
		48	5240		14.00	13.53
	802.11ac VHT40	38	5190	MCS0	14.00	13.59
		46	5230		14.00	13.56
	802.11ac VHT80	42	5210	MCS0	14.00	13.58
	802.11axHE20	36	5180	MCS0	14.00	13.54
		40	5200		14.00	13.53
		44	5220		14.00	13.58
		48	5240		14.00	13.63
	802.11axHE40	38	5190	MCS0	14.00	13.88
		46	5230		14.00	13.78
	802.11ax HE80	42	5210	MCS0	14.00	13.54

Band	Mode	Channel	Frequency (MHz)	Data Rate (Mbps)	Max. Tune up	Average Power(dBm)
5.2G WIFI _1TX _ANT S0	802.11a	36	5180	6	14.00	13.71
		40	5200		14.00	13.67
		44	5220		14.00	13.85
		48	5240		14.00	13.67
	802.11n HT20	36	5180	MCS0	14.00	13.67
		40	5200		14.00	13.72
		44	5220		14.00	13.78
		48	5240		14.00	13.66
	802.11n HT40	38	5190	MCS0	14.00	13.33
		46	5230		14.00	13.12
	802.11ac VHT20	36	5180	MCS0	14.00	13.17
		40	5200		14.00	13.11
		44	5220		14.00	13.24
		48	5240		14.00	13.28
	802.11ac VHT40	38	5190	MCS0	14.00	13.33
		46	5230		14.00	13.27
	802.11ac VHT80	42	5210	MCS0	14.00	13.56
	802.11axHE20	36	5180	MCS0	14.00	13.79
		40	5200		14.00	13.64
		44	5220		14.00	13.56
		48	5240		14.00	13.62
	802.11axHE40	38	5190	MCS0	14.00	13.06
		46	5230		14.00	13.10
	802.11ax HE80	42	5210	MCS0	14.00	13.47

Band	Mode	Channel	Frequency (MHz)	Data Rate (Mbps)	ANT MAIN Average Power(dBm)	ANT AUX Average Power(dBm)	Max. Tune up	Total Average Power(dBm)
5.2G WIFI _2TX _ANT S0+S1	802.11a	36	5180	6	13.97	13.61	17.00	16.80
		40	5200		13.92	13.51	17.00	16.73
		44	5220		13.56	13.59	17.00	16.59
		48	5240		13.78	13.54	17.00	16.67
	802.11n HT20	36	5180	MCS8	13.89	13.75	17.00	16.83
		40	5200		13.59	13.57	17.00	16.59
		44	5220		13.51	13.59	17.00	16.56
		48	5240		13.54	13.79	17.00	16.68
	802.11n HT40	38	5190	MCS8	13.61	13.89	17.00	16.76
		46	5230		13.59	13.76	17.00	16.69
	802.11ac VHT20	36	5180	MCS8	13.09	13.23	17.00	16.17
		40	5200		12.89	13.13	17.00	16.02
		44	5220		13.03	12.97	17.00	16.01
		48	5240		12.84	12.89	17.00	15.88
	802.11ac VHT40	38	5190	MCS8	12.80	12.91	17.00	15.87
		46	5230		13.46	13.42	17.00	16.45
	802.11ac VHT80	42	5210	MCS8	12.68	12.91	17.00	15.81
	802.11ax HE20	36	5180	MCS8	12.56	12.89	17.00	15.74
		40	5200		12.68	12.98	17.00	15.84
		44	5220		12.26	12.67	17.00	15.48
		48	5240		12.68	13.01	17.00	15.86
	802.11ax HE40	38	5190	MCS8	13.59	13.75	17.00	16.68
		46	5230		13.64	13.56	17.00	16.61
	802.11ax HE80	42	5210	MCS8	12.24	12.68	17.00	15.48

Note:

- 1) The Average conducted power of WiFi 5.2G is measured with RMS detector.
- 2) The tested channel results are marks in bold.

7.1.4 CONDUCTED POWER MEASUREMENTS OF WIFI 5.3G

Band	Mode	Channel	Frequency (MHz)	Data Rate (Mbps)	Max. Tune up	Average Power(dBm)
5.3G WIFI _1TX _ANT S1	802.11a	52	5260	6	14.00	13.71
		56	5280		14.00	13.78
		60	5300		14.00	13.57
		64	5320		14.00	13.88
	802.11n HT20	52	5260	MCS0	14.00	13.78
		56	5280		14.00	13.82
		60	5300		14.00	13.79
		64	5320		14.00	13.63
	802.11n HT40	54	5270	MCS0	14.00	13.96
		62	5310		14.00	13.94
	802.11ac VHT20	52	5260	MCS0	14.00	13.54
		56	5280		14.00	13.89
		60	5300		14.00	13.76
		64	5320		14.00	13.66
	802.11ac VHT40	54	5270	MCS0	14.00	13.68
		62	5310		14.00	13.75
	802.11ac VHT80	58	5290	MCS0	14.00	13.68
	802.11ax HE20	52	5260	MCS0	14.00	13.70
		56	5280		14.00	13.52
		60	5300		14.00	13.86
		64	5320		14.00	13.87
	802.11ax HE40	54	5270	MCS0	14.00	13.83
		62	5310		14.00	13.71
	802.11ax HE80	58	5290	MCS0	14.00	13.63

Band	Mode	Channel	Frequency (MHz)	Data Rate (Mbps)	Max. Tune up	Average Power(dBm)
5.3G WIFI _1TX _ANT S0	802.11a	52	5260	6	14.00	13.62
		56	5280		14.00	13.56
		60	5300		14.00	13.89
		64	5320		14.00	13.94
	802.11n HT20	52	5260	MCS0	14.00	13.75
		56	5280		14.00	13.67
		60	5300		14.00	13.67
		64	5320		14.00	13.64
	802.11n HT40	54	5270	MCS0	14.00	13.12
		62	5310		14.00	13.78
	802.11ac VHT20	52	5260	MCS0	14.00	13.08
		56	5280		14.00	13.87
		60	5300		14.00	13.79
		64	5320		14.00	13.65
	802.11ac VHT40	54	5270	MCS0	14.00	13.29
		62	5310		14.00	13.18
	802.11ac VHT80	58	5290	MCS0	14.00	13.73
	802.11ax HE20	52	5260	MCS0	14.00	13.67
		56	5280		14.00	13.60
		60	5300		14.00	13.49
		64	5320		14.00	13.34
	802.11ax HE40	54	5270	MCS0	14.00	13.14
		62	5310		14.00	13.04
	802.11ax HE80	58	5290	MCS0	14.00	13.29

Band	Mode	Channel	Frequency (MHz)	Data Rate (Mbps)	ANT MAIN Average Power(dBm)	ANT AUX Average Power(dBm)	Max. Tune up	Total Average Power(dBm)
5.3G WIFI _2TX _ANT S0+S1	802.11a	52	5260	6	13.84	13.75	17.00	16.81
		56	5280		13.78	13.65	17.00	16.73
		60	5300		13.67	13.64	17.00	16.67
		64	5320		13.85	13.74	17.00	16.81
	802.11n HT20	52	5260	MCS8	13.68	13.68	17.00	16.69
		56	5280		13.56	13.56	17.00	16.57
		60	5300		13.59	13.59	17.00	16.60
		64	5320		13.49	13.79	17.00	16.65
	802.11n HT40	54	5270	MCS8	13.58	13.67	17.00	16.64
		62	5310		13.68	13.49	17.00	16.60
	802.11ac VHT20	52	5260	MCS8	13.37	13.60	17.00	16.50
		56	5280		13.40	13.46	17.00	16.44
		60	5300		12.95	13.23	17.00	16.10
		64	5320		13.23	13.31	17.00	16.28
	802.11ac VHT40	54	5270	MCS8	13.08	13.13	17.00	16.12
		62	5310		13.70	13.82	17.00	16.77
	802.11ac VHT80	58	5290	MCS8	13.08	13.35	17.00	16.23
	802.11ax HE20	52	5260	MCS8	13.35	13.69	17.00	16.53
		56	5280		12.95	13.32	17.00	16.15
		60	5300		13.23	13.36	17.00	16.31
		64	5320		12.93	13.38	17.00	16.17
	802.11ax HE40	54	5270	MCS8	13.83	13.46	17.00	16.66
		62	5310		13.91	13.59	17.00	16.76
	802.11ax HE80	58	5290	MCS8	13.01	13.23	17.00	16.13

Note:

- 1) The Average conducted power of WiFi 5.3G is measured with RMS detector.
- 2) The tested channel results are marks in bold.

7.1.5 CONDUCTED POWER MEASUREMENTS OF WIFI 5.6G

Band	Mode	Channel	Frequency (MHz)	Data Rate (Mbps)	Max. Tune up	Average Power(dBm)
5.6G WIFI _1TX _ANT S1	802.11a	100	5500	6	14.00	13.65
		104	5520		14.00	13.90
		108	5540		14.00	13.84
		112	5560		14.00	13.82
		116	5580		14.00	13.76
		132	5660		14.00	13.74
		136	5680		14.00	13.94
		140	5700		14.00	13.89
		144	5720		14.00	13.73
	802.11n HT20	100	5500	MCS0	14.00	13.58
		104	5520		14.00	13.61
		108	5540		14.00	13.63
		112	5560		14.00	13.68
		116	5580		14.00	13.65
		132	5660		14.00	13.57
		136	5680		14.00	13.92
		140	5700		14.00	13.72
	802.11n HT40	102	5510	MCS0	14.00	13.61
		110	5550		14.00	13.58
		118	5590		14.00	13.52
		126	5630		14.00	13.87
		134	5670		14.00	13.79
		142	5710		14.00	13.68
	802.11ac VHT20	100	5500	MCS0	14.00	13.89
		104	5520		14.00	13.87
		108	5540		14.00	13.86
		112	5560		14.00	13.90
		116	5580		14.00	13.84
		132	5660		14.00	13.67
		136	5680		14.00	13.72
		140	5700		14.00	13.66
		144	5720		14.00	13.49

Band	Mode	Channel	Frequency (MHz)	Data Rate (Mbps)	Max. Tune up	Average Power(dBm)
5.6G WIFI _1TX _ANT S1	802.11ac VHT40	102	5510	MCS0	14.00	13.62
		110	5550		14.00	13.85
		118	5590		14.00	13.79
		126	5630		14.00	13.71
		134	5670		14.00	13.52
		142	5710		14.00	13.43
	802.11ac VHT80	106	5530	MCS0	14.00	13.58
		122	5610		14.00	13.87
	802.11ax HE20	100	5500	MCS0	14.00	13.87
		104	5520		14.00	13.76
		108	5540		14.00	13.81
		112	5560		14.00	13.77
		116	5580		14.00	13.79
		132	5660		14.00	13.67
		136	5680		14.00	13.68
		140	5700		14.00	13.62
		144	5720		14.00	13.56
	802.11ax HE40	102	5510	MCS0	14.00	13.79
		110	5550		14.00	13.79
		118	5590		14.00	13.84
		126	5630		14.00	13.88
		134	5670		14.00	13.65
		142	5710		14.00	13.53
	802.11ax HE80	106	5530	MCS0	14.00	13.68
		122	5610		14.00	13.59

Band	Mode	Channel	Frequency (MHz)	Data Rate (Mbps)	Max. Tune up	Average Power(dBm)
5.6G WIFI _1TX _ANT S0	802.11a	100	5500	6	14.00	13.84
		104	5520		14.00	13.58
		108	5540		14.00	13.72
		112	5560		14.00	13.61
		116	5580		14.00	13.69
		132	5660		14.00	13.80
		136	5680		14.00	13.91
		140	5700		14.00	13.66
		144	5720		14.00	13.74
	802.11n HT20	100	5500	MCS0	14.00	13.62
		104	5520		14.00	13.78
		108	5540		14.00	13.65
		112	5560		14.00	13.70
		116	5580		14.00	13.74
		132	5660		14.00	13.56
		136	5680		14.00	13.59
		140	5700		14.00	13.32
		144	5720		14.00	13.29
	802.11n HT40	102	5510	MCS0	14.00	13.67
		110	5550		14.00	13.70
		118	5590		14.00	13.78
		126	5630		14.00	13.71
		134	5670		14.00	13.61
		142	5710		14.00	13.55
	802.11ac VHT20	100	5500	MCS0	14.00	13.58
		104	5520		14.00	13.71
		108	5540		14.00	13.68
		112	5560		14.00	13.74
		116	5580		14.00	13.86
		132	5660		14.00	13.62
		136	5680		14.00	13.45
		140	5700		14.00	13.52
		144	5720		14.00	13.58

Band	Mode	Channel	Frequency (MHz)	Data Rate (Mbps)	Max. Tune up	Average Power(dBm)
5.6G WIFI _1TX _ANT S0	802.11ac VHT40	102	5510	MCS0	14.00	13.77
		110	5550		14.00	13.90
		118	5590		14.00	13.83
		126	5630		14.00	13.76
		134	5670		14.00	13.61
		142	5710		14.00	13.53
	802.11ac VHT80	106	5530	MCS0	14.00	13.62
		122	5610		14.00	13.71
	802.11ax HE20	100	5500	MCS0	14.00	13.20
		104	5520		14.00	13.41
		108	5540		14.00	13.50
		112	5560		14.00	13.47
		116	5580		14.00	13.44
		132	5660		14.00	13.29
		136	5680		14.00	13.25
		140	5700		14.00	13.11
		144	5720		14.00	13.35
	802.11ax HE40	102	5510	MCS0	14.00	13.54
		110	5550		14.00	13.67
		118	5590		14.00	13.72
		126	5630		14.00	13.60
		134	5670		14.00	13.55
		142	5710		14.00	13.42
	802.11ax HE80	106	5530	MCS0	14.00	13.64
		122	5610		14.00	13.60

Band	Mode	Channel	Frequency (MHz)	Data Rate (Mbps)	ANT MAIN Average Power(dBm)	ANT MAIN Average Power(dBm)	Max. Tune up	Total Average Power(dBm)
5.6G WIFI _2TX _ANT S0+S1	802.11a	100	5500	6	13.95	13.75	17.00	16.86
		104	5520		13.92	13.89	17.00	16.92
		108	5540		13.85	13.67	17.00	16.77
		112	5560		13.61	13.56	17.00	16.60
		116	5580		13.87	13.91	17.00	16.90
		132	5660		13.79	13.57	17.00	16.69
		136	5680		13.84	13.67	17.00	16.77
		140	5700		13.68	13.81	17.00	16.76
		144	5720		13.49	13.85	17.00	16.68
	802.11n HT20	100	5500	MCS8	13.46	13.59	17.00	16.54
		104	5520		13.35	13.67	17.00	16.52
		108	5540		13.56	13.89	17.00	16.74
		112	5560		13.79	13.67	17.00	16.74
		116	5580		13.89	13.49	17.00	16.70
		132	5660		13.38	13.57	17.00	16.49
		136	5680		13.67	13.84	17.00	16.77
		140	5700		13.59	13.67	17.00	16.64
		144	5720		13.47	13.82	17.00	16.66
	802.11n HT40	102	5510	MCS8	13.56	13.97	17.00	16.78
		110	5550		13.29	13.78	17.00	16.55
		118	5590		13.67	13.84	17.00	16.77
		126	5630		13.87	13.67	17.00	16.78
		134	5670		13.54	13.89	17.00	16.73
		142	5710		13.48	13.85	17.00	16.68
	802.11ac VHT20	100	5500	MCS8	13.79	13.89	17.00	16.85
		104	5520		13.68	13.82	17.00	16.76
		108	5540		13.54	13.68	17.00	16.62
		112	5560		13.64	13.59	17.00	16.63
		116	5580		13.89	13.67	17.00	16.79
		132	5660		13.15	13.56	17.00	16.37
		136	5680		13.26	13.56	17.00	16.42
		140	5700		13.54	13.66	17.00	16.61
		144	5720		13.62	13.71	17.00	16.68

Band	Mode	Channel	Frequency (MHz)	Data Rate (Mbps)	ANT MAIN Average Power(dBm)	ANT MAIN Average Power(dBm)	Max. Tune up	Total Average Power(dBm)
5.6G WIFI _2TX _ANT S0+S1	802.11ac VHT40	102	5510	MCS8	13.78	13.56	17.00	16.68
		110	5550		13.76	13.64	17.00	16.71
		118	5590		13.16	13.34	17.00	16.26
		126	5630		13.34	13.46	17.00	16.41
		134	5670		13.23	13.31	17.00	16.28
		142	5710		13.25	13.43	17.00	16.35
	802.11ac VHT80	106	5530	MCS8	12.56	12.67	17.00	15.63
		122	5610		12.34	12.45	17.00	15.41
	802.11ax HE20	100	5500	MCS8	13.43	13.68	17.00	16.57
		104	5520		13.53	13.57	17.00	16.56
		108	5540		13.24	13.45	17.00	16.36
		112	5560		13.15	13.53	17.00	16.35
		116	5580		13.31	13.43	17.00	16.38
		132	5660		13.13	13.42	17.00	16.29
		136	5680		12.73	13.23	17.00	16.00
		140	5700		12.91	13.43	17.00	16.19
		144	5720		13.05	13.47	17.00	16.28
	802.11ax HE40	102	5510	MCS8	13.79	13.91	17.00	16.86
		110	5550		13.89	13.76	17.00	16.84
		118	5590		13.79	13.82	17.00	16.82
		126	5630		13.57	13.84	17.00	16.72
		134	5670		13.67	13.76	17.00	16.73
		142	5710		13.57	13.69	17.00	16.64
	802.11ax HE80	106	5530	MCS8	12.55	13.16	17.00	15.88
		122	5610		12.60	13.07	17.00	15.85

Note:

- 1) The Average conducted power of WiFi 5.6G is measured with RMS detector.
- 2) The tested channel results are marks in bold.

7.1.6 CONDUCTED POWER MEASUREMENTS OF WIFI 5.8G

Band	Mode	Channel	Frequency (MHz)	Data Rate (Mbps)	Max. Tune up	Average Power(dBm)
5.8G WIFI _1TX _ANT S1	802.11a	149	5745	6	14.00	13.78
		153	5765		14.00	13.67
		157	5785		14.00	13.97
		161	5805		14.00	13.80
		165	5825		14.00	13.89
	802.11n HT20	149	5745	MCS0	14.00	13.60
		153	5765		14.00	13.89
		157	5785		14.00	13.61
		161	5805		14.00	13.59
		165	5825		14.00	13.71
	802.11n HT40	151	5755	MCS0	14.00	13.87
		159	5795		14.00	13.76
	802.11ac VHT20	149	5745	MCS0	14.00	13.53
		153	5765		14.00	13.81
		157	5785		14.00	13.56
		161	5805		14.00	13.67
		165	5825		14.00	13.92
	802.11ac VHT40	151	5755	MCS0	14.00	13.51
		159	5795		14.00	13.93
	802.11ac VHT80	155	5775	MCS0	14.00	13.67
	802.11ax HE20	149	5745	MCS0	14.00	13.73
		153	5765		14.00	13.91
		157	5785		14.00	13.84
		161	5805		14.00	13.65
		165	5825		14.00	13.61
	802.11ax HE40	151	5755	MCS0	14.00	13.87
		159	5795		14.00	13.58
	802.11ax HE80	155	5775	MCS0	14.00	13.53

Band	Mode	Channel	Frequency (MHz)	Data Rate (Mbps)	Max. Tune up	Average Power(dBm)
5.8G WIFI _1TX _ANT S0	802.11a	149	5745	6	14.00	13.98
		153	5765		14.00	13.72
		157	5785		14.00	13.87
		161	5805		14.00	13.97
		165	5825		14.00	13.91
	802.11n HT20	149	5745	MCS0	14.00	13.43
		153	5765		14.00	13.64
		157	5785		14.00	13.88
		161	5805		14.00	13.44
		165	5825		14.00	13.51
	802.11n HT40	151	5755	MCS0	14.00	13.21
		159	5795		14.00	13.54
	802.11ac VHT20	149	5745	MCS0	14.00	13.91
		153	5765		14.00	13.07
		157	5785		14.00	13.26
		161	5805		14.00	13.53
		165	5825		14.00	13.72
	802.11ac VHT40	151	5755	MCS0	14.00	13.24
		159	5795		14.00	13.56
	802.11ac VHT80	155	5775	MCS0	14.00	13.53
	802.11ax HE20	149	5745	MCS0	14.00	13.80
		153	5765		14.00	13.07
		157	5785		14.00	13.12
		161	5805		14.00	13.38
		165	5825		14.00	13.46
	802.11ax HE40	151	5755	MCS0	14.00	13.24
		159	5795		14.00	13.51
	802.11ax HE80	155	5775	MCS0	14.00	13.74

Band	Mode	Channel	Frequency (MHz)	Data Rate (Mbps)	ANT MAIN Average Power(dBm)	ANT MAIN Average Power(dBm)	Max. Tune up	Total Average Power(dBm)
5.8G WIFI _2TX _ANT S0+S1	802.11a	149	5745	6	13.50	13.64	17.00	16.58
		153	5765		13.67	13.59	17.00	16.64
		157	5785		13.76	13.89	17.00	16.84
		161	5805		13.57	13.67	17.00	16.63
		165	5825		13.68	13.87	17.00	16.79
	802.11n HT20	149	5745	MCS8	13.67	13.89	17.00	16.79
		153	5765		13.67	13.67	17.00	16.68
		157	5785		13.32	13.48	17.00	16.41
		161	5805		13.49	13.49	17.00	16.50
		165	5825		13.67	13.67	17.00	16.68
	802.11n HT40	151	5755	MCS8	13.51	13.87	17.00	16.70
		159	5795		13.57	13.69	17.00	16.64
	802.11ac VHT20	149	5745	MCS8	13.67	13.59	17.00	16.64
		153	5765		13.54	13.06	17.00	16.32
		157	5785		13.98	13.69	17.00	16.85
		161	5805		13.26	13.54	17.00	16.41
		165	5825		13.21	13.53	17.00	16.38
	802.11ac VHT40	151	5755	MCS8	13.18	13.78	17.00	16.50
		159	5795		13.26	13.56	17.00	16.42
	802.11ac VHT80	155	5775	MCS8	11.96	12.56	17.00	15.28
	802.11ax HE20	149	5745	MCS8	13.35	13.75	17.00	16.56
		153	5765		13.17	13.62	17.00	16.41
		157	5785		13.23	13.79	17.00	16.53
		161	5805		13.28	13.81	17.00	16.56
		165	5825		13.34	13.67	17.00	16.52
	802.11ax HE40	151	5755	MCS8	13.72	13.72	17.00	16.73
		159	5795		13.59	13.86	17.00	16.74
	802.11ax HE80	155	5775	MCS8	12.92	13.39	17.00	16.17

Note:

- 1) The Average conducted power of WiFi 5.8G is measured with RMS detector.
- 2) The tested channel results are marks in bold.

7.2 SAR TEST RESULTS

General Notes:

- 1) Per KDB447498 D01, all measurement SAR results are scaled to the maximum tune-up tolerance limit to demonstrate compliant.
- 2) Per KDB447498 D01, testing of other required channels within the operating mode of a frequency band is not required when the reported 1-g or 10-g SAR for the mid-band or highest output power channel is: ≤ 0.8 W/kg or 2.0 W/kg, for 1-g or 10-g respectively, when the transmission band is ≤ 100 MHz. When the maximum output power variation across the required test channels is $> \frac{1}{2}$ dB, instead of the middle channel, the highest output power channel must be used.
- 3) Per KDB865664 D01, for each frequency band, repeated SAR measurement is required only when the measured SAR is ≥ 0.8 W/kg; if the deviation among the repeated measurement is $\leq 20\%$, and the measured SAR < 1.45 W/kg, only one repeated measurement is required.
- 4) Per KDB941225 D06, the DUT Dimension is bigger than 9 cm x 5 cm, so 10mm is chosen as the test separation distance for Hotspot mode. When the antenna-to-edge distance is greater than 2.5cm, such position does not need to be tested.
- 5) Per KDB648474 D04, SAR is evaluated without a headset connected to the device. When the standalone reported body-worn SAR is ≤ 1.2 W/kg, no additional SAR evaluations using a headset are required.
- 6) Per KDB865664 D02, SAR plot is only required for the highest measured SAR in each exposure configuration, wireless mode and frequency band combination; Plots are also required when the measured SAR is > 1.5 W/kg, or > 7.0 W/kg for occupational exposure. The published RF exposure KDB procedures may require additional plots; for example, to support SAR to peak location separation ratio test exclusion and/or volume scan post-processing.

WLAN Notes:

- 1) For exposure conditions with multiple test positions, such as handset operating next to the ear, devices with hotspot mode, procedures for initial test position can be applied. Using the transmission mode determined by the DSSS procedure or initial test configuration, area scans are measured for all positions in an exposure condition. The test position with the highest extrapolated (peak) SAR is used as the initial test position. When the reported SAR of the initial test position is ≤ 0.4 W/kg, further SAR measurement is not required for the other (remaining) test positions. Otherwise, SAR is evaluated at the subsequent highest peak SAR position until the reported SAR result is ≤ 0.8 W/kg or all test positions are measured.
- 2) Justification for test configurations for WLAN per KDB Publication 248227 for 2.4GHZ WIFI single transmission chain operations, the highest measured maximum output power Channel for DSSS was selected for SAR measurement. SAR for OFDM modes (2.4GHz 802.11g/n) was not required due to the maximum allowed powers and the highest reported DSSS SAR. See Section 7.1 for more information.
- 3) Justification for test configurations for WLAN per KDB Publication 248227 for 5GHZ WIFI single transmission chain operations, the initial test configuration was selected according to the transmission mode with the highest maximum allowed power. Other transmission modes were not investigated since the highest reported SAR for initial test configuration adjusted by the ratio of maximum output powers is less than 1.2W/kg. See Section 7.1 for more information.

7.2.1 SAR MEASUREMENT RESULT

1. SAR Measurement Result of 2.4G WiFi

Test No.	Band	Channel	Test Position	Separation Distance (cm)	Ant	Ant Vendor	Data Rate	Maximum Tune-up (dBm)	Conducted Power (dBm)	Power Drift (dB)	SAR 1g (W/kg)	SAR 10g (W/kg)	Reported 1g SAR
W01	802.11b	6	Back of Screen	2.5	S0	Luxshare	1	15	14.94	0	<0.001	<0.001	<0.001
W02	802.11b	6	Back of Keyboard	0	S0	Luxshare	1	15	14.94	0.09	0.016	0.008	0.017
W03	802.11b	1	Back of Keyboard	0	S0	Luxshare	1	15	14.87	0.13	0.012	0.007	0.012
W04	802.11b	11	Back of Keyboard	0	S0	Luxshare	1	15	14.71	0.08	0.011	0.007	0.012
W05	802.11b	6	Back of Keyboard	0	S0	INPAQ	1	15	14.94	0.12	0.013	0.005	0.013
W07	802.11b	1	Back of Screen	2.5	S1	Luxshare	1	15	14.92	0	0.042	0.022	0.043
W08	802.11b	1	Back of Keyboard	0	S1	Luxshare	1	15	14.92	0.03	0.065	0.034	0.066
W09	802.11b	6	Back of Keyboard	0	S1	Luxshare	1	15	14.81	-0.01	0.052	0.027	0.054
W10	802.11b	11	Back of Keyboard	0	S1	Luxshare	1	15	14.61	0.08	0.059	0.061	0.065
W11	802.11b	1	Back of Keyboard	0	S1	INPAQ	1	15	14.92	-0.01	0.053	0.030	0.054

Note: The value with boldface is the maximum SAR Value of each test band.

2. SAR Measurement Result of BT

Test No.	Band	Channel	Test Position	Separation Distance (cm)	Ant	Ant Vendor	Data Rate	Maximum Tune-up (dBm)	Conducted Power (dBm)	Power Drift (dB)	SAR 1g (W/kg)	SAR 10g (W/kg)	Reported 1g SAR
B01	BT DH5	78	Back of Screen	2.5	S1	Luxshare	1	12.5	11.78	0	0.001	0.001	0.002
B02	BT DH5	78	Back of Keyboard	0	S1	Luxshare	1	12.5	11.78	0	0.024	0.012	0.028
B03	BT DH5	0	Back of Keyboard	0	S1	Luxshare	1	12.5	10.86	0	0.021	0.010	0.030
B04	BT DH5	39	Back of Keyboard	0	S1	Luxshare	1	12.5	11.15	0	0.032	0.015	0.043
B05	BT DH5	39	Back of Keyboard	0	S1	INPAQ	1	12.5	11.15	0	0.029	0.014	0.040
B07	BT BLE	39	Back of Screen	2.5	S1	Luxshare	1	12.5	11.5	0	0.002	0.001	0.002
B08	BT BLE	39	Back of Keyboard	0	S1	Luxshare	1	12.5	11.5	0	0.028	0.014	0.036
B09	BT BLE	0	Back of Keyboard	0	S1	Luxshare	1	12.5	10.65	0	0.020	0.010	0.031
B10	BT BLE	19	Back of Keyboard	0	S1	Luxshare	1	12.5	11.03	0	0.028	0.014	0.040
B11	BT BLE	19	Back of Keyboard	0	S1	INPAQ	1	12.5	11.03	0	0.025	0.011	0.035

Note: The value with boldface is the maximum SAR Value of each test band.

3. SAR Measurement Result of WiFi 5G

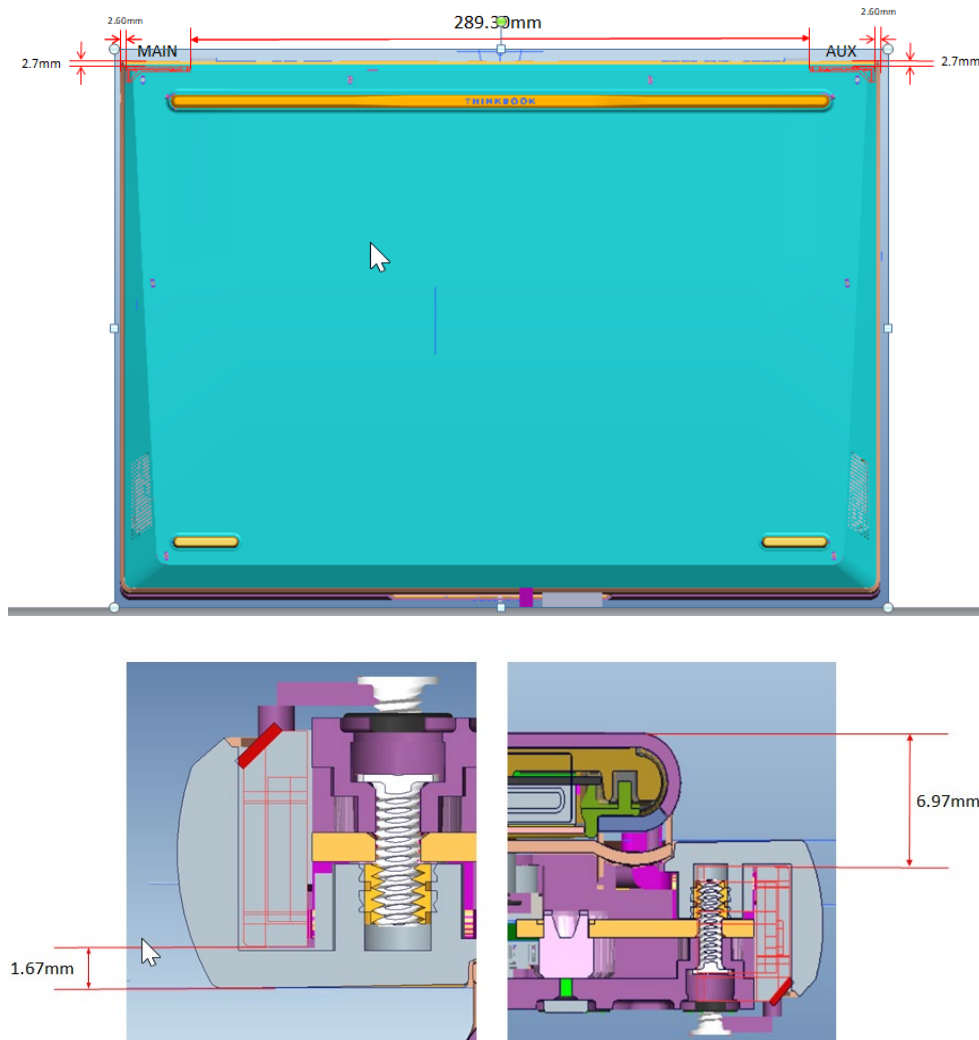
Test No.	Band	Channel	Test Position	Separation Distance (cm)	Ant	Ant Vendor	Data Rate	Maximum Tune-up (dBm)	Conducted Power (dBm)	Power Drift (dB)	SAR 1g (W/kg)	SAR 10g (W/kg)	Reported 1g SAR
W19	802.11ac VHT80	42	Back of Screen	2.5	S0	Luxshare	MCS0	14	13.56	0	0.202	0.079	0.224
W20	802.11ac VHT80	42	Back of Keyboard	0	S0	Luxshare	MCS0	14	13.56	0	0.035	0.012	0.039
W21	802.11ac VHT80	42	Back of Screen	2.5	S0	INPAQ	MCS0	14	13.56	0	0.195	0.077	0.216
W23	802.11ac VHT80	42	Back of Screen	2.5	S1	Luxshare	MCS0	14	13.58	0	0.370	0.143	0.408
W24	802.11ac VHT80	42	Back of Keyboard	0	S1	Luxshare	MCS0	14	13.58	0	0.081	0.029	0.089
W25	802.11ac VHT80	42	Back of Screen	2.5	S1	INPAQ	MCS0	14	13.58	0	0.354	0.138	0.390
W27	802.11ac VHT80	58	Back of Screen	2.5	S0	Luxshare	MCS0	14	13.73	0	0.193	0.077	0.205
W28	802.11ac VHT80	58	Back of Keyboard	0	S0	Luxshare	MCS0	14	13.73	0	0.072	0.025	0.077
W29	802.11ac VHT80	58	Back of Screen	2.5	S0	INPAQ	MCS0	14	13.73	0	0.189	0.071	0.201
W31	802.11ac VHT80	58	Back of Screen	2.5	S1	Luxshare	MCS0	14	13.68	0	0.333	0.129	0.358
W32	802.11ac VHT80	58	Back of Keyboard	0	S1	Luxshare	MCS0	14	13.68	0	0.078	0.028	0.084
W33	802.11ac VHT80	58	Back of Screen	2.5	S1	INPAQ	MCS0	14	13.68	0	0.312	0.123	0.336
W35	802.11ac VHT80	122	Back of Screen	2.5	S0	Luxshare	MCS0	14	13.71	0	0.053	0.021	0.057
W36	802.11ac VHT80	122	Back of Keyboard	0	S0	Luxshare	MCS0	14	13.71	0	0.021	0.008	0.022
W37	802.11ac VHT80	106	Back of Screen	2.5	S0	Luxshare	MCS0	14	13.62	0	0.047	0.018	0.051
W38	802.11ac VHT80	122	Back of Screen	2.5	S0	INPAQ	MCS0	14	13.71	0	0.051	0.019	0.055
W40	802.11ac VHT80	122	Back of Screen	2.5	S1	Luxshare	MCS0	14	13.87	0	0.132	0.055	0.136
W41	802.11ac VHT80	122	Back of Keyboard	0	S1	Luxshare	MCS0	14	13.87	0	0.065	0.023	0.067
W42	802.11ac VHT80	106	Back of Screen	2.5	S1	Luxshare	MCS0	14	13.58	0	0.117	0.049	0.129
W43	802.11ac VHT80	122	Back of Screen	2.5	S1	INPAQ	MCS0	14	13.87	0	0.121	0.053	0.125
W45	802.11ac VHT80	155	Back of Screen	2.5	S0	Luxshare	MCS0	14	13.53	0	0.024	0.010	0.026
W46	802.11ac VHT80	155	Back of Keyboard	0	S0	Luxshare	MCS0	14	13.53	0	0.012	0.004	0.014
W47	802.11ac VHT80	155	Back of Screen	2.5	S0	INPAQ	MCS0	14	13.53	0	0.022	0.009	0.024
W49	802.11ac VHT80	155	Back of Screen	2.5	S1	Luxshare	MCS0	14	13.67	0.09	0.122	0.049	0.132
W50	802.11ac VHT80	155	Back of Keyboard	0	S1	Luxshare	MCS0	14	13.67	0	0.041	0.014	0.044
W51	802.11ac VHT80	155	Back of Screen	2.5	S1	INPAQ	MCS0	14	13.67	0	0.113	0.048	0.122

Note: The value with boldface is the maximum SAR Value of each test band.

7.3 MULTIPLE TRANSMITTER EVALUATION

The following tables list information which is relevant for the decision if a simultaneous transmit evaluation is necessary according to FCC KDB 447498D01 General RF Exposure Guidance v06.

The location of the antennas inside the EUT is shown as below picture:



7.3.1 STAND-ALONE SAR TEST EXCLUSION

Per FCC KDB 447498D01, SAR compliance for simultaneous transmission must be considered when the maximum duration of overlapping transmissions, including network hand-offs, is greater than 30 seconds. This device contains multiple transmitters that may operate simultaneously, and therefore requires a simultaneous transmission analysis.

The Simultaneous Transmission Possibilities of this device are as below:

No.	Configuration	Body
1	WLAN 2.4G Ant S0 + WLAN 2.4G Ant S1	Yes
2	WLAN 5.2G Ant S0 + WLAN 5.2G Ant S1	Yes
3	WLAN 5.3G Ant S0 + WLAN 5.3G Ant S1	Yes
4	WLAN 5.6G Ant S0 + WLAN 5.6G Ant S1	Yes
5	WLAN 5.8G Ant S0 + WLAN 5.8G Ant S1	Yes
6	BT Ant S1 + WLAN 2.4G Ant S0	Yes
7	BT Ant S1 + WLAN 5.2G Ant S0	Yes
8	BT Ant S1 + WLAN 5.3G Ant S0	Yes
9	BT Ant S1 + WLAN 5.6G Ant S0	Yes
10	BT Ant S1 + WLAN 5.8G Ant S0	Yes

Note: Only the Ant S1 supports BT function.

7.3.2 SIMULTANEOUS TRANSMISSION CONDITIONS

About WIFI and Bluetooth transmit simultaneously

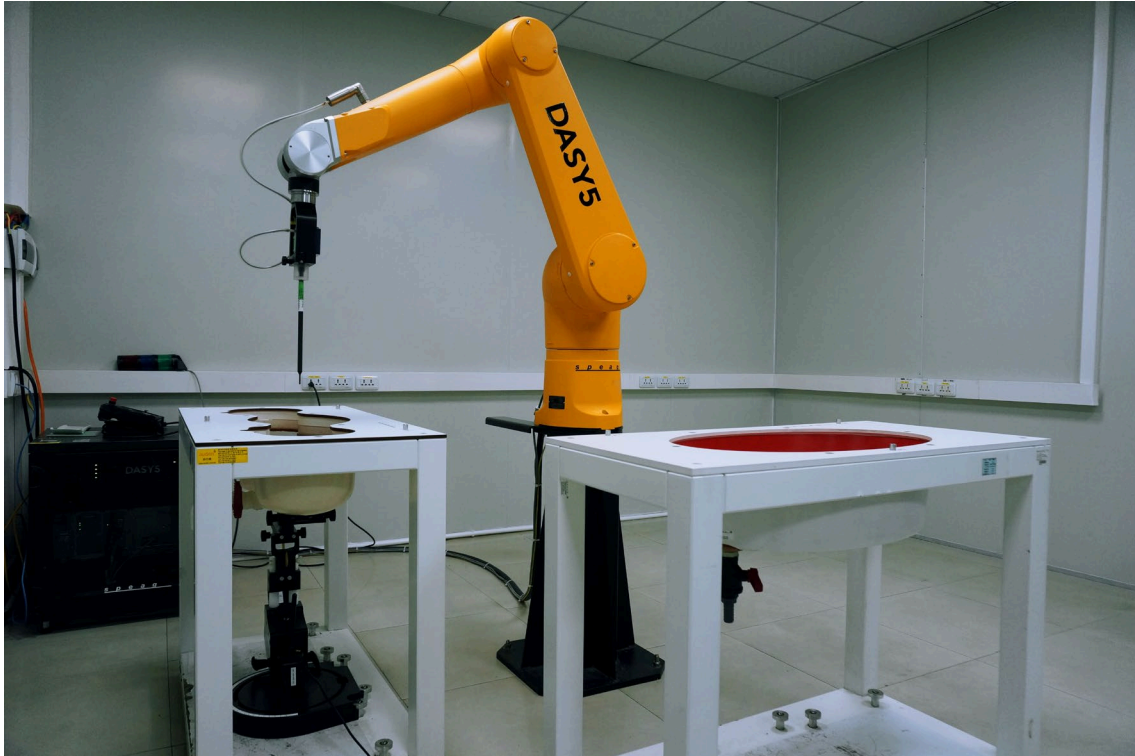
Band \ Position		Back of Screen	Back of Keyboard
ANT S0	2.4G WLAN	<0.001	0.017
	5.2G WLAN	0.224	0.039
	5.3G WLAN	0.205	0.077
	5.6G WLAN	0.057	0.022
	5.8G WLAN	0.026	0.014
ANT S1	2.4G WLAN	0.043	0.066
	5.2G WLAN	0.408	0.089
	5.3G WLAN	0.358	0.084
	5.6G WLAN	0.136	0.067
	5.8G WLAN	0.132	0.044
	Bluetooth	0.002	0.043
MAX \sum SAR _{1g}		0.632	0.161

Note: Thus SAR_{MAX.total} = 0.632 W/kg < 1.6 W/kg, it is compliant with 1999/519/EC, so Simultaneous SAR are not required for WIFI and Bluetooth antenna.

APPENDIX

1. TEST LAYOUT

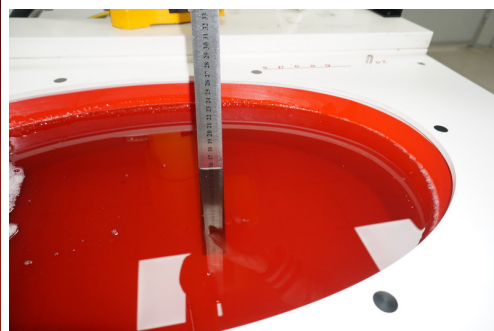
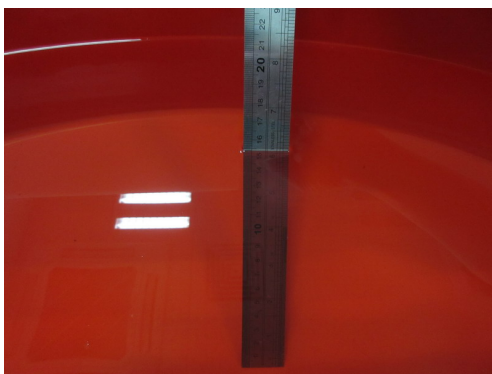
Specific Absorption Rate Test Layout



Liquid depth in the flat Phantom ($\geq 15\text{cm}$ depth)

HSL_2300MHz-2700MHz_15.3cm

HSL_5GHz_15.7cm



Appendix A. SAR Plots of System Verification

(Pls See 2102C068-2-FCC SAR_WLAN Module_abgn for RTL8852AE_Appendix A.)

Appendix B. SAR Plots of SAR Measurement

(Pls See 2102C068-2-FCC SAR_WLAN Module_abgn for RTL8852AE_Appendix B.)

Appendix C. Calibration Certificate

(Pls See 2102C068-2-FCC SAR_WLAN Module_abgn for RTL8852AE_Appendix C.)

Appendix D. Photographs of the Test Set-Up

(Pls See 2102C068-2-FCC SAR_WLAN Module_abgn for RTL8852AE_Appendix D.)

End of Test Report