

FCC SAR Test Report

FCC ID: TX2-RTL8822CE


Report No. : BTL-FCC SAR-2-2102T172A
Equipment : 802.11a/b/g/n/ac RTL8822CE Combo module
Model Name : RTL8822CE Combo
Brand Name : Realtek
Applicant : Realtek Semiconductor Corp.
Address : No. 2, Innovation Road II, Hsinchu Science Park, Hsinchu 300, Taiwan
Manufacturer : Lenovo PC HK Limited
Address : 23/F, Lincoln House, Taikoo Place 979 King's Road, Quarry Bay, Hong Kong, P.R. China

Radio Function : WLAN 2.4G, WLAN 5G, Bluetooth

Standard(s) : KDB447498 D01 General RF Exposure Guidance v06
KDB248227 D01 802.11 Wi-Fi SAR v02r02
KDB865664 D01 SAR measurement 100 MHz to 6 GHz v01r04
KDB865664 D02 SAR Reporting v01r02
KDB616217 D04 SAR for laptop and Tablets

Date of Receipt : 2021/3/18
Date of Test : 2021/3/29 ~ 2021/4/3
Issued Date : 2021/4/21

The above equipment has been tested and found in compliance with the requirement of the above standards by BTL Inc.

Prepared by : 
Jerry Chuang, Engineer



Approved by : 
Peter Chen, Section Manager

BTL Inc.
No.18, Ln. 171, Sec. 2, Jiuzong Rd., Neihu Dist., Taipei City 114, Taiwan
Tel: +886-2-2657-3299 Fax: +886-2-2657-3331 Web: www.newbtl.com

Declaration

BTL represents to the client that testing is done in accordance with standard procedures as applicable and that test instruments used has been calibrated with standards traceable to international standard(s) and/or national standard(s).

BTL's reports apply only to the specific samples tested under conditions. It is manufacture's responsibility to ensure that additional production units of this model are manufactured with the identical electrical and mechanical components. **BTL** shall have no liability for any declarations, inferences or generalizations drawn by the client or others from **BTL** issued reports.

This report is the confidential property of the client. As a mutual protection to the clients, the public and ourselves, the test report shall not be reproduced, except in full, without our written approval.

BTL's laboratory quality assurance procedures are in compliance with the **ISO/IEC 17025** requirements, and accredited by the conformity assessment authorities listed in this test report.

BTL is not responsible for the sampling stage, so the results only apply to the sample as received.

The information, data and test plan are provided by manufacturer which may affect the validity of results, so it is manufacturer's responsibility to ensure that the apparatus meets the essential requirements of applied standards and in all the possible configurations as representative of its intended use.

Limitation

For the use of the authority's logo is limited unless the Test Standard(s)/Scope(s)/Item(s) mentioned in this test report is (are) included in the conformity assessment authorities acceptance respective.

Please note that the measurement uncertainty is provided for informational purpose only and are not use in determining the Pass/Fail results.

Table of Contents

	Page
1. GENERAL INFORMATION	6
1.1. GENERAL DESCRIPTION OF EUT	6
2. SUMMARY OF SAR MEASUREMENT	7
2.1. TEST FACILITY	7
2.2. MEASUREMENT UNCERTAINTY	7
2.3 WLAN ANTENNA INFORMATION:	9
2.4 THE MAXIMUM SAR 1G VALUES	10
2.5 LABORATORY ENVIRONMENT	10
2.6 MAIN TEST INSTRUMENTS	11
3. SAR MEASUREMENTS SYSTEM CONFIGURATION	12
3.1. SAR MEASUREMENT SETUP	12
3.1.1. TEST SETUP LAYOUT	12
3.2. DASY5 E-FIELD PROBE SYSTEM	13
3.2.1. EX3DV4 PROBE SPECIFICATION	13
3.2.2. E-FIELD PROBE CALIBRATION	14
3.2.3. OTHER TEST EQUIPMENT	15
3.2.4. SCANNING PROCEDURE	16
3.2.5. DATA STORAGE AND EVALUATION	17
3.2.6. DATA EVALUATION BY SEMCAD	18
4. TISSUE-EQUIVALENT LIQUID	20
4.1. TISSUE-EQUIVALENT LIQUID INGREDIENTS	20
4.2. TISSUE-EQUIVALENT LIQUID PROPERTIES	21
5. SYSTEM CHECK	22
5.1. DESCRIPTION OF SYSTEM CHECK	22
5.2. DESCRIPTION OF SYSTEM CHECK	23
6. OPERATIONAL CONDITIONS DURING TEST	24
6.1. GENERAL DESCRIPTION OF TEST PROCEDURES	24
6.2. TEST POSITION OF PORTABLE DEVICES	24
6.3. TEST POSITION OF PORTABLE DEVICES	25
6.4. TEST POSITION	26
6.4.1. BODY TEST CONFIGURATION	26
6.5 SAR EXCLUSION CALCULATIONS FOR WLAN ANTENNA < 50MM FROM THE USER	27
6.6 SAR EXCLUSION CALCULATIONS FOR WLAN ANTENNA > 50MM FROM THE USER	28
7. SAR MEASUREMENT VARIABILITY AND UNCERTAINTY	29
7.1. SAR MEASUREMENT VARIABILITY	29
8. CONDUCTED POWER RESULTS	30
8.1. CONDUCTED POWER MEASUREMENT RESULTS OF BLUETOOTH	30
8.2. CONDUCTED POWER MEASUREMENTS OF WI-FI 2.4GHZ BAND	31
8.3. CONDUCTED POWER MEASUREMENTS OF 5G UNII_1	32
8.4. CONDUCTED POWER MEASUREMENTS OF 5G UNII_2A	33

Table of Contents

	Page
8.5. CONDUCTED POWER MEASUREMENTS OF 5G UNII_2C	34
8.6. CONDUCTED POWER MEASUREMENTS OF 5G UNII_3	35
8.7. SARTEST RESULTS	35
9. SAR TEST RESULTS	37
9.1. BODY SAR TEST RESULTS	37
10. MULTIPLE TRANSMITTER EVALUATION	39
10.1 STAND-ALONE SAR TEST EXCLUSION	39
10.2 SIMULTANEOUS TRANSMISSION CONDITIONS	39
10.3 ESTIMATED SAR FOR SIMULTANEOUS TRANSMISSION SAR ANALYSIS	40
11.3.1 ESTIMATED SAR FOR BLUETOOTH	40
11.3 ABOUT BT/WIFI AND WWAN	41
12. TEST LAYOUT	42

REPORT ISSUED HISTORY

Report Version	Description	Issued Date
R00	Original Issue.	2021/4/21

1 GENERAL INFORMATION

1.1 GENERAL DESCRIPTION OF EUT

Equipment	802.11a/b/g/n/ac RTL8822CE Combo module		
Model Name	RTL8822CE Combo		
Brand Name	Realtek		
Host device information			
Equipment	Notebook Computer		
Model Name	Lenovo 300w Gen 3xxxxxxx (The “x” in model name can be 0 to 9, A to Z, a to z, “-” or blank, for marketing purpose only)		
Brand Name	Lenovo		
Model Difference	Different model distribute to different area.		
Power Source	DC voltage supplied from External Power Supply. (Lenovo/ADLX45YLC3D)		
Power Rating	I/P:100 -240V~1.3A 50-60Hz O/P: 20.0V 2.25A 45.0W, 15.0V 3.0A, 9.0V 2.0A / 5.0V 2.0A 10.0W		
Battery Information	Brand / Model:Lenovo / L20C3PG0 Model: Rating: 4080mAh / 47Wh		
WIFI+BT Module	Realtek / RTL8822CE		
Operation Frequency	Function	Band	Frequency (MHz)
	WiFi	2.4G	TX : 2412 - 2472
		5G_UNII 1	TX : 5180 - 5240
		5G_UNII 2a	TX : 5250 - 5350
		5G_UNII 2c	TX : 5500 - 5700
		5G_UNII 3	TX : 5745 - 5825
	Bluetooth	Basic Rate (BR)	TX : 2402 - 2480
		Enhance Data Rate	TX : 2402 - 2480
		Bluetooth Low Energy	TX : 2402 - 2480
Test Model	Lenovo 300w Gen 3		
Sample Status	Engineering Sample		
EUT Modification(s)	N/A		

The above equipment has been tested and found compliance with the requirement of the relative standards by BTL Inc.

The test data, data evaluation, and equipment configuration contained in our test report (Ref No. BTL-FCC-SAR-2-2102T172A) were obtained utilizing the test procedures, test instruments, test sites that has been accredited by the Authority of TAF according to the ISO-17025 quality assessment standard and technical standard(s).

2 SUMMARY OF SAR MEASUREMENT

2.1 TEST FACILITY

The test facilities used to collect the test data in this report is **SAR Test room** at the location of No. 68-1, Ln. 169, Sec.2, Datong Rd., Xizhi Dist., New Taipei City 221, Taiwan.

2.2 MEASUREMENT UNCERTAINTY

Uncertainty Budget for Frequency range of 300 MHz to 3 GHz

Error Description	Uncertainty Value (± %)		Probability Distribution	Divisor	Ci (1g)	Ci (10g)	Standard Uncertainty (1g)	Standard Uncertainty (10g)	Vi V _{eff}
Measurement System									
Probe Calibration	6.05		Normal	1	1	1	± 6.05 %	± 6.05 %	∞
Axial Isotropy	4.7		Rectangular	√3	0.7	0.7	± 1.9 %	± 1.9 %	∞
Hemispherical Isotropy	9.6		Rectangular	√3	0.7	0.7	± 3.9 %	± 3.9 %	∞
Boundary Effects	1		Rectangular	√3	1	1	± 0.6 %	± 0.6 %	∞
Linearity	4.7		Rectangular	√3	1	1	± 2.7 %	± 2.7 %	∞
Detection Limits	1		Rectangular	√3	1	1	± 0.6 %	± 0.6 %	∞
Modulation response	2.4		Rectangular	√3	1	1	±1.4 %	±1.4 %	∞
Readout Electronics	0.3		Normal	1	1	1	± 0.3 %	± 0.3 %	∞
Response Time	0.8		Rectangular	√3	1	1	± 0.5%	± 0.5 %	∞
Integration Time	2.6		Rectangular	√3	1	1	± 1.5 %	± 1.5 %	∞
RF Ambient – Noise	3		Rectangular	√3	1	1	± 1.7 %	± 1.7 %	∞
RF Ambient– Reflections	3		Rectangula	√3	1	1	± 1.7 %	± 1.7 %	∞
Probe Positioner	0.4		Rectangular	√3	1	1	± 0.2 %	± 0.2 %	∞
Probe Positioning	2.9		Rectangular	√3	1	1	± 1.7 %	±1.7 %	∞
Post-processing	4		Rectangular	√3	1	1	± 2.3 %	± 2.3 %	∞
Max.SAR Evaluation	2		Rectangular	√3	1	1	± 1.15 %	± 1.15 %	∞
Test Sample Related									
Device Positioning	1.6	1.8	Normal	1	1	1	± 1.6 %	± 1.8 %	145
Device Holder	1.5	1.7	Normal	1	1	1	± 1.5 %	± 1.7 %	5
Power Drift	5.0		Rectangular	√3	1	1	± 2.9 %	± 2.9 %	∞
Phantom and Setup									
Phantom Production Tolerances	6.1		Rectangular	√3	1	1	3.52	3.52	∞
SAR correction	1.9		Rectangular	√3	1	0.84	1.10	1.10	
Liquid Conductivity (mea.)	2.4		Rectangular	√3	0.78	0.71	1.08	1.08	∞
Liquid Permittivity (mea.)	2.4		Rectangular	√3	0.26	0.26	0.36	0.36	∞
Temp. unc. - Conductivity	3.4		Rectangular	√3	0.78	0.71	1.53	1.53	∞
Temp. unc. - Permittivity	0.4		Rectangular	√3	0.23	0.26	0.05	0.05	∞
Combined Standard Uncertainty (K = 1)							± 10.42 %	± 10.48 %	361
Expanded Uncertainty (K = 2)							± 20.84 %	± 20.97 %	

Uncertainty Budget for Frequency range of 3 GHz to 6 GHz

Error Description	Uncertainty Value (± %)		Probability Distribution	Divisor	Ci (1g)	Ci (10g)	Standard Uncertainty (1g)	Standard Uncertainty (10g)	Vi V _{eff}
Measurement System									
Probe Calibration	6.65		Normal	1	1	1	± 6.65 %	± 6.65 %	∞
Axial Isotropy	4.7		Rectangular	√3	0.7	0.7	± 1.9 %	± 1.9 %	∞
Hemispherical Isotropy	9.6		Rectangular	√3	0.7	0.7	± 3.9 %	± 3.9 %	∞
Boundary Effects	2		Rectangular	√3	1	1	± 1.2 %	± 1.2 %	∞
Linearity	4.7		Rectangular	√3	1	1	± 2.7 %	± 2.7 %	∞
Detection Limits	1		Rectangular	√3	1	1	± 0.6 %	± 0.6 %	∞
Modulation response	2.4		Rectangular	√3	1	1	±1.4 %	±1.4 %	∞
Readout Electronics	0.3		Normal	1	1	1	± 0.3 %	± 0.3 %	∞
Response Time	0.8		Rectangular	√3	1	1	± 0.5%	± 0.5 %	∞
Integration Time	2.6		Rectangular	√3	1	1	± 1.5 %	± 1.5 %	∞
RF Ambient – Noise	3		Rectangular	√3	1	1	± 1.7 %	± 1.7 %	∞
RF Ambient– Reflections	3		Rectangular	√3	1	1	± 1.7 %	± 1.7 %	∞
Probe Positioner	0.4		Rectangular	√3	1	1	± 0.2 %	± 0.2 %	∞
Probe Positioning	6.7		Rectangular	√3	1	1	± 3.9 %	±3.9 %	∞
Post-processing	4		Rectangular	√3	1	1	± 2.3 %	± 2.3 %	∞
Max.SAR Evaluation	4		Rectangular	√3	1	1	± 2.3 %	± 2.3 %	∞
Test Sample Related									
Device Positioning	1.6	1.8	Normal	1	1	1	±1.6 %	± 1.8 %	145
Device Holder	1.5	1.7	Normal	1	1	1	± 1.5 %	± 1.7 %	5
Power Drift	5.0		Rectangular	√3	1	1	± 2.9 %	± 2.9 %	∞
Phantom and Setup									
Phantom Production Tolerances	6.6		Rectangular	√3	1	1	3.81	3.81	∞
SAR correction	1.9		Rectangular	√3	1	0.84	1.10	0.92	
Liquid Conductivity (mea.)	2.4		Rectangular	√3	0.78	0.71	1.08	0.98	∞
Liquid Permittivity (mea.)	2.4		Rectangular	√3	0.26	0.26	0.36	0.36	∞
Temp. unc. - Conductivity	3.4		Rectangular	√3	0.78	0.71	1.53	1.39	∞
Temp. unc. - Permittivity	0.4		Rectangular	√3	0.23	0.26	0.05	0.06	∞
Combined Standard Uncertainty (K = 1)							± 11.65 %	± 11.66 %	361
Expanded Uncertainty (K = 2)							± 23.29 %	± 23.33 %	

2.3 WLAN Antenna Information:

Antenna	Manufacture	Part Number	Type	Connector	Frequency Range (MHz)	Gain (dBi)
Main	INPAQ Corporation	025.901U1.0001	PIFA	I-PEX	2400-2500	-1.26
					5150-5350	0.41
					5470-5725	0.28
					5725-5850	1.06
Aux	INPAQ Corporation	025.901U2.0001	PIFA	I-PEX	2400-2500	-1.46
					5150-5350	0.65
					5740-5725	-0.25
					5725-5850	0.15

Antenna	Manufacture	Part Number	Type	Connector	Frequency Range (MHz)	Gain (dBi)
Main	AWAN	025.901U3.0001	PIFA	I-PEX	2400-2500	0.93
					5150-5350	0.58
					5470-5725	1.68
					5725-5850	0.86
Aux	AWAN	025.901U4.0001	PIFA	I-PEX	2400-2500	1.52
					5150-5350	0.62
					5740-5725	0.93
					5725-5850	0.93

2.4 The Maximum SAR 1g Values

Band	Mode	Highest Body Reported SAR-1g(W/kg)
DTS	Wi-Fi 2.4G	1.317
UNII	Wi-Fi 5.2 & 5.3G	1.186
	Wi-Fi 5.6G	1.207
	Wi-Fi 5.8G	1.207

Note:

1.The device is in compliance with Specific Absorption Rate(SAR)for general population uncontrolled exposure limits according to the FCC rule §2.1093, the ANSI C95.1:2019/IEEE C95.1:2019, the NCRP Report Number 86 for uncontrolled environment and had been tested in accordance with the measurement methods and procedures specified in IEEE Std 1528-2013 .

2.5 Laboratory Environment

Temperature	Min. = 18°C, Max. = 25°C
Relative humidity	Min. = 30%, Max. = 70%
Ground system resistance	< 0.5Ω
Ambient noise is checked and found very low and in compliance with requirement of standards. Reflection of surrounding objects is minimized and in compliance with requirement of standards.	

2.6 Main Test Instruments

Item	Equipment	Manufacturer	Model	Serial No.	Cal. Date	Cal. Interval
1	Data Acquisition Electronics	Speag	DAE4	1486	June. 04, 2020	1 Year
2	E-field Probe	Speag	EX3DV4	7369	May. 29, 2020	1 Year
3	System Validation Dipole	Speag	D2450V2	973	Sep. 21, 2018	3 Year
4	System Validation Dipole	Speag	D5GHzV2	1221	Sep. 28, 2018	3 Year
5	ELI4 Phantom	Speag	ELI4 Phantom V5.0	1240	N/A	N/A
6	ENA Network Analyzer	Agilent	E5071C	MY46524658	Apr. 07, 2020	1 Year
7	EXG Vector Signal Generator	Agilent	N5172B	MY53051229	Jun. 20, 2020	1 Year
8	Spectrum Analyzer	Keysight	N9010A	MY54200240	Jun. 11, 2020	1 Year
9	Power Meter	Anritsu	ML2495A	1128008	Jun. 11, 2020	1 Year
10	Power Sensor	Anritsu	MA2411B	1126001	Jun. 11, 2020	1 Year
11	Dielectric Probe Kit	Agilent	85070E	2593	N/A	N/A
12	Low pass filter	Mini-Circuits	SLP-2950+	M108294	N/A	N/A
13	Power Amplifier	Mini-Circuits	ZVE-2W-272+	N650001538	N/A	N/A
14	Power Amplifier	Mini-Circuits	ZVE-8G+	N628801631	N/A	N/A
15	Thermometer	PA	O-230PK	N/A	Apr. 09, 2020	1 Year

Remark: "N/A" denotes no model name, serial No. or calibration specified.

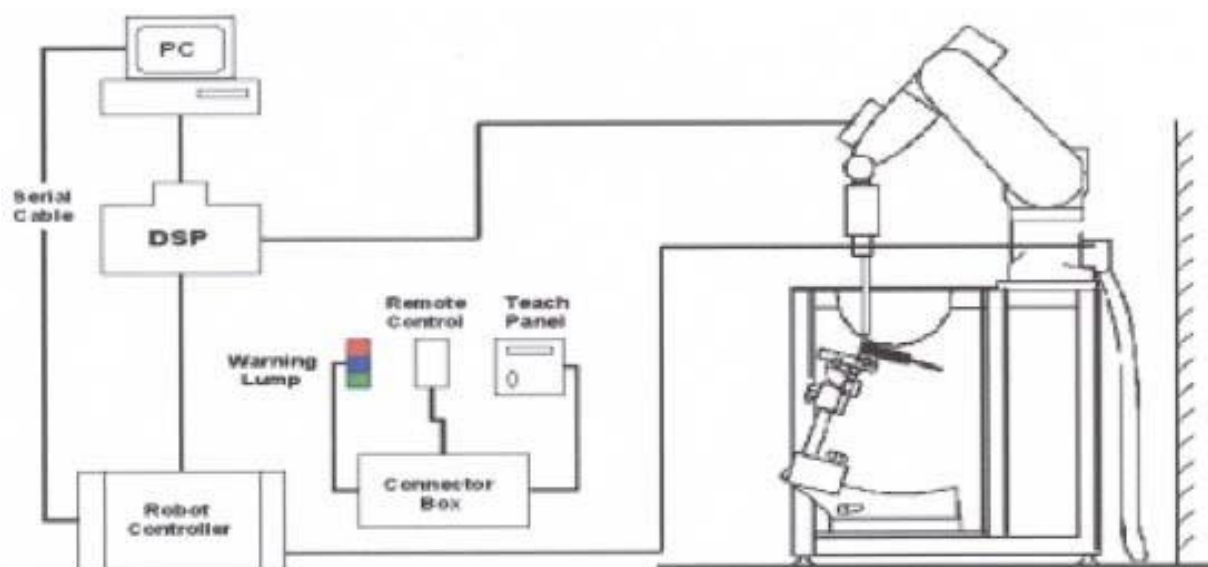
3 SAR MEASUREMENTS SYSTEM CONFIGURATION

3.1 SAR Measurement Setup

The DASY5 system for performing compliance tests consists of the following items:

1. A standard high precision 6-axis robot (Stäubli RX family) with controller and software. An arm extension for accommodating the data acquisition electronics (DAE).
2. A dosimetric probe, i.e. an isotropic E-field probe optimized and calibrated for usage in tissue simulating liquid. The probe is equipped with an optical surface detector system.
3. A data acquisition electronic (DAE) which performs the signal amplification, signal multiplexing, AD-conversion, offset measurements, mechanical surface detection, collision detection, etc. The unit is battery powered with standard or rechargeable batteries. The signal is optically transmitted to the EOC.
4. A unit to operate the optical surface detector which is connected to the EOC.
5. The Electro-Optical Coupler (EOC) performs the conversion from the optical into a digital electric signal of the DAE. The EOC is connected to the DASY5 measurement server.
6. The DASY5 measurement server, which performs all real-time data evaluation for field measurements and surface detection, controls robot movements and handles safety operation. A computer operating Windows.
7. DASY5 software and SEMCAD data evaluation software.
8. Remote control with teach panel and additional circuitry for robot safety such as warning lamps, etc.
9. The generic twin phantom enabling the testing of left-hand and right-hand usage.
10. The device holder for handheld mobile phones.
11. Tissue simulating liquid mixed according to the given recipes.
12. System validation dipoles allowing to validate the proper functioning of the system.

3.1.1 TEST SETUP LAYOUT

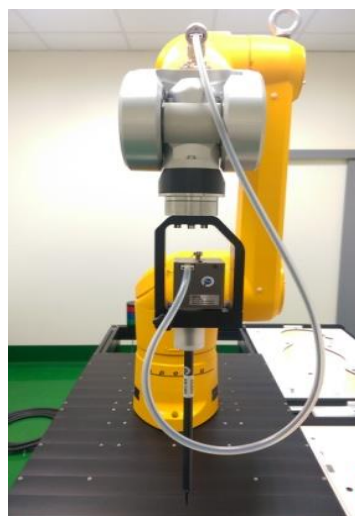


3.2 DASY5 E-field Probe System

The SAR measurements were conducted with the dosimetric probe EX3DV4 (manufactured by SPEAG), designed in the classical triangular configuration and optimized for dosimetric evaluation.

3.2.1 EX3DV4 PROBE SPECIFICATION

Construction	Symmetrical design with triangular core Interleaved sensors Built-in shielding against static charges PEEK enclosure material (resistant to organic solvents, e.g., DGBE)
Calibration	ISO/IEC 17025 calibration service available
Frequency	10 MHz to 6 GHz Linearity: ± 0.2 dB (30 MHz to 6 GHz)
Directivity	± 0.3 dB in HSL (rotation around probe axis) ± 0.5 dB in tissue material (rotation normal to probe axis)
Dynamic Range	10 μ W/g to > 100 mW/g Linearity: ± 0.2 dB
Dimensions	Overall length: 330 mm (Tip: 20 mm) Tip diameter: 2.5 mm (Body: 12 mm) Distance from probe tip to dipole centers: 1.0 mm



EX3DV4 E-field Probe

3.2.2 E-FIELD PROBE CALIBRATION

Each probe is calibrated according to a dosimetric assessment procedure with accuracy better than $\pm 10\%$. The spherical isotropy was evaluated and found to be better than $\pm 0.25\text{dB}$. The sensitivity parameters (NormX, NormY, NormZ), the diode compression parameter (DCP) and the conversion factor (ConvF) of the probe are tested.

The free space E-field from amplified probe outputs is determined in a test chamber. This is performed in a TEM cell for frequencies below 1 GHz, and in a wave guide above 1 GHz for free space. For the free space calibration, the probe is placed in the volumetric center of the cavity and at the proper orientation with the field. The probe is then rotated 360 degrees.

E-field temperature correlation calibration is performed in a flat phantom filled with the appropriate simulated brain tissue. The measured free space E-field in the medium correlates to temperature rise in a dielectric medium. For temperature correlation calibration a RF transparent thermistor-based temperature probe is used in conjunction with the E-field probe.

$$\text{SAR} = C \frac{\Delta T}{\Delta t}$$

Where: Δt = Exposure time (30 seconds),

C = Heat capacity of tissue (brain or muscle),

ΔT = Temperature increase due to RF exposure.

Or

$$\text{SAR} = \frac{|E|^2 \sigma}{\rho}$$

Where: σ = Simulated tissue conductivity,

ρ = Tissue density (kg/m^3).


3.2.3 OTHER TEST EQUIPMENT


3.2.3.1. DEVICE HOLDER FOR TRANSMITTERS

Construction: Simple but effective and easy-to-use extension for Mounting Device that facilitates the testing of larger devices according to IEC 62209-2 (e.g., laptops, cameras, etc.) It is lightweight and fits easily on the upper part of the Mounting Device in place of the phone positioner. The extension is fully compatible with the Twin SAM, ELI4 and SAM v6.0 Phantoms.

Material: POM, Acrylic glass, Foam

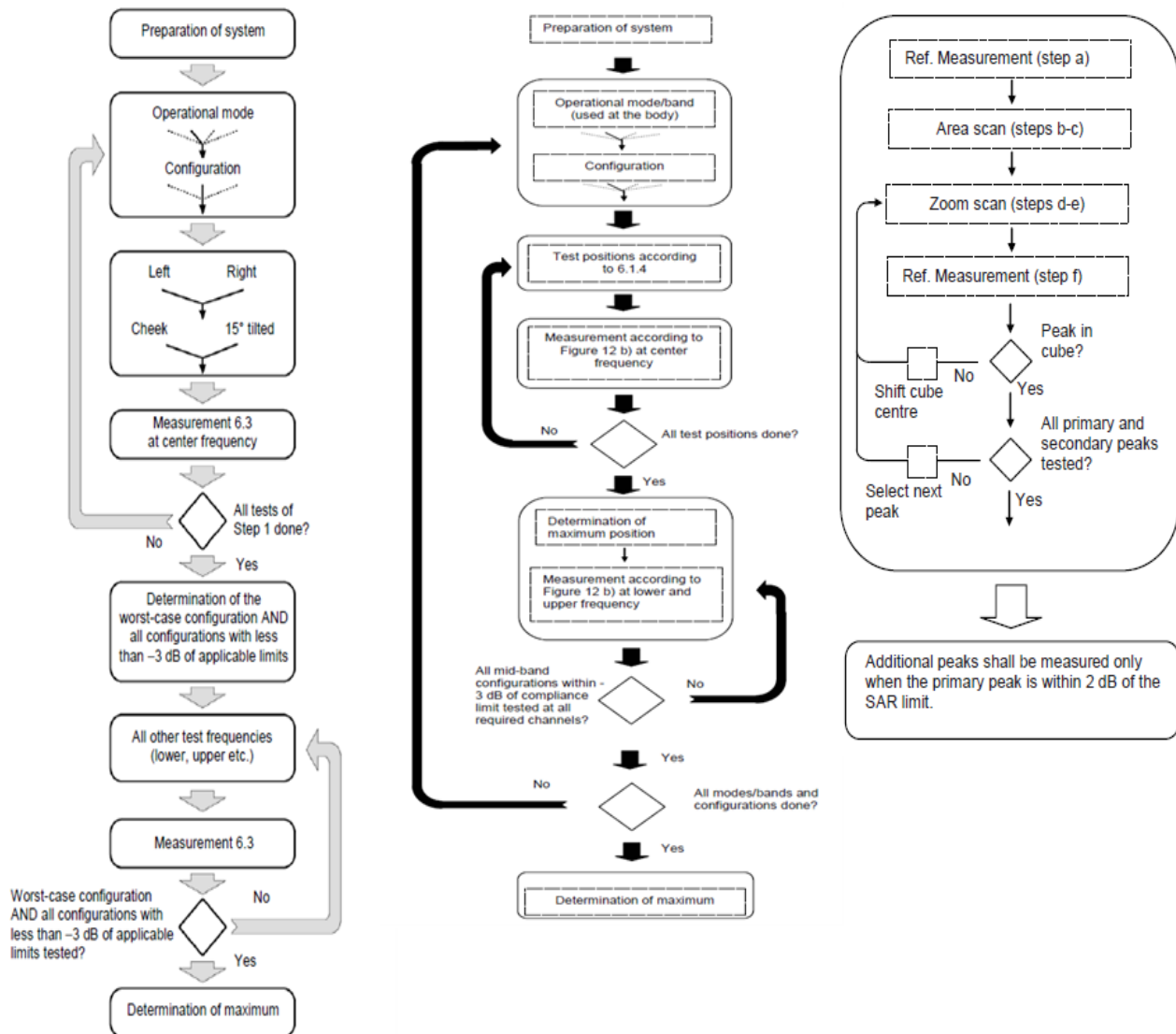
3.2.3.2 PHANTOM

Model	ELI4 Phantom	
Construction	Phantom for compliance testing of handheld and body-mounted wireless devices in the frequency range of 30 MHz to 6 GHz. ELI is fully compatible with the IEC 62209-2 standard and all known tissue simulating liquids. ELI has been optimized regarding its performance and can be integrated into our standard phantom tables. A cover prevents evaporation of the liquid. Reference markings on the phantom allow installation of the complete setup, including all predefined phantom positions and measurement grids, by teaching three points. The phantom is compatible with all SPEAG dosimetric probes and dipoles.	
Shell Thickness	2±0.1 mm	
Filling Volume	Approx. 30 liters	
Dimensions	Length: 600 mm ; Width: 190mm Height: adjustable feet	
Available	Special	

Model	Twin SAM	
Construction	The shell corresponds to the specifications of the Specific Anthropomorphic Mannequin (SAM) phantom defined in IEEE 1528 and IEC 62209-1. It enables the dosimetric evaluation of left and right hand phone usage as well as body mounted usage at the flat phantom region. A cover prevents evaporation of the liquid. Reference markings on the phantom allow the complete setup of all predefined phantom positions and measurement grids by teaching three points with the robot.	
Shell Thickness	2 ± 0.2 mm	
Filling Volume	Approx. 25 liters	
Dimensions	Length:1000mm; Width: 500mm Height: adjustable feet	
Available	Special	

3.2.4 SCANNING PROCEDURE

The SAR test against the head and body-worn phantom was carried out as follow:



After an area scan has been done at a fixed distance of 1.4mm from the surface of the phantom on the source side, a 3D scan is set up around the location of the maximum spot SAR. First, a point within the scan area is visited by the probe and a SAR reading taken at the start of testing. At the end of testing, the probe is returned to the same point and a second reading is taken. Comparison between these start and end readings enables the power drift during measurement to be assessed.

Above is the scanning procedure flow chart and table from the IEEE1528 standard.

This is the procedure for which all compliant testing should be carried out to ensure that all variations of the device position and transmission behavior are tested.

3.2.5 DATA STORAGE AND EVALUATION

3.2.5.1 DATA STORAGE

The DASY5 software stores the acquired data from the data acquisition electronics as raw data (in microvolt readings from the probe sensors), together with all necessary software parameters for the data evaluation (probe calibration data, liquid parameters and device frequency and modulation data) in measurement files with the extension "DAE4". The software evaluates the desired unit and format for output each time the data is visualized or exported. This allows verification of the complete software setup even after the measurement and allows correction of incorrect parameter settings. For example, if a measurement has been performed with a wrong crest factor parameter in the device setup, the parameter can be corrected afterwards and the data can be re-evaluated.

The measured data can be visualized or exported in different units or formats, depending on the selected probe type ([V/m], [A/m], [°C], [mW/g], [mW/cm²], [dBrel], etc.). Some of these units are not available in certain situations or show meaningless results, e.g., a SAR output in a lossless media will always be zero. Raw data can also be exported to perform the evaluation with other software packages.

3.2.6 DATA EVALUATION BY SEMCAD

The SEMCAD software automatically executes the following procedures to calculate the field units from the microvolt readings at the probe connector. The parameters used in the evaluation are stored in the configuration modules of the software:

Probe parameters:	Sensitivity	Normi, a_{i0} , a_{i1} , a_{i2}
	Conversion factor	ConvF _i
	Diode compression point	Dcp _i
Device parameters:	Frequency	f
	Crest factor	cf
Media parameters:	Conductivity	
	Density	

These parameters must be set correctly in the software. They can be found in the component documents or they can be imported into the software from the configuration files issued for the DASY5 components. In the direct measuring mode of the multimeter option, the parameters of the actual system setup are used. In the scan visualization and export modes, the parameters stored in the corresponding document files are used.

The first step of the evaluation is a linearization of the filtered input signal to account for the compression characteristics of the detector diode. The compensation depends on the input signal, the diode type and the DC-transmission factor from the diode to the evaluation electronics.

If the exciting field is pulsed, the crest factor of the signal must be known to correctly compensate for peak power. The formula for each channel can be given as:

$$V_i = U_i + U_i^2 \cdot cf / dcp_i$$

With	V_i = compensated signal of channel i	(i = x, y, z)
	U_i = input signal of channel i	(i = x, y, z)
	cf = crest factor of exciting field	(DASY parameter)
	dcp _i = diode compression point	(DASY parameter)

From the compensated input signals the primary field data for each channel can be evaluated:

$$\text{E-field probes: } E_i = (V_i / \text{Norm}_i \cdot \text{ConvF})^{1/2}$$

$$\text{H-field probes: } H_i = (V_i)^{1/2} \cdot (a_{i0} + a_{i1} f + a_{i2} f^2) / f$$

With V_i = compensated signal of channel i (i = x, y, z)

Norm_i = sensor sensitivity of channel i (i = x, y, z)
[mV/(V/m)²] for E-field Probes

ConvF = sensitivity enhancement in solution

a_{ij} = sensor sensitivity factors for H-field probes

f = carrier frequency [GHz]

E_i = electric field strength of channel i in V/m

H_i = magnetic field strength of channel i in A/m

The RSS value of the field components gives the total field strength (Hermitian magnitude):

$$E_{\text{tot}} = (E_X^2 + E_Y^2 + E_Z^2)^{1/2}$$

The primary field data are used to calculate the derived field units.

$$\text{SAR} = (E_{\text{tot}})^2 \cdot \sigma / (\rho \cdot 1000)$$

With SAR = local specific absorption rate in mW/g

E_{tot} = total field strength in V/m
= conductivity in [mho/m] or [Siemens/m]
= equivalent tissue density in g/cm³

Note that the density is normally set to 1 (or 1.06), to account for actual brain density rather than the density of the simulation liquid. The power flow density is calculated assuming the excitation field to be a free space field.

$$P_{\text{pwe}} = E_{\text{tot}}^2 / 3770 \text{ or } P_{\text{pwe}} = H_{\text{tot}}^2 \cdot 37.7$$

With P_{pwe} = equivalent power density of a plane wave in mW/cm²

E_{tot} = total field strength in V/m

H_{tot} = total magnetic field strength in A/m

4 TISSUE-EQUIVALENT LIQUID

4.1 Tissue-equivalent Liquid Ingredients

The liquid is consisted of water, salt and Glycol, Sugar, Preventol and Cellulose. The liquid has previously been proven to be suited for worst-case. The measured conductivity and relative permittivity should be within $\pm 5\%$ of the target values. The below table shows the detail solution. It's satisfying the latest tissue dielectric parameters requirements proposed by the IEC 62209.

Composition of the Tissue Equivalent Matter

Tissue Type	Bactericide	DGBE	HEC	NaCl	Sucrose	Triton X-100	Water	Diethylene Glycol Mono-hexylether
Head 2450	-	45.0	-	0.1	-	-	54.9	-
Head 5G	-	-	-	-	-	17.2	65.5	17.3

4.2 Tissue-equivalent Liquid Properties

Dielectric Performance of Tissue Simulating Liquid

Tissue Verification									
Date	Tissue Type	Frequency (MHz)	Conductivity (σ)	Permittivity (ϵ_r)	Targeted Conductivity (σ)	Targeted Permittivity (ϵ_r)	Deviation Conductivity (σ) (%)	Deviation Permittivity (ϵ_r) (%)	Limit (%) ± 5
2021/4/2	Head	2402	1.82	38.38	1.76	39.29	3.55	-2.31	± 5
2021/4/2	Head	2412	1.83	38.35	1.77	39.27	3.70	-2.35	± 5
2021/4/2	Head	2422	1.84	38.31	1.78	39.25	3.91	-2.41	± 5
2021/4/2	Head	2437	1.86	38.25	1.79	39.22	4.16	-2.48	± 5
2021/4/2	Head	2441	1.87	38.24	1.79	39.21	4.20	-2.49	± 5
2021/4/2	Head	2450	1.88	38.21	1.80	39.20	4.33	-2.53	± 5
2021/4/2	Head	2452	1.88	38.20	1.80	39.19	4.33	-2.52	± 5
2021/4/2	Head	2457	1.89	38.19	1.81	39.19	4.32	-2.55	± 5
2021/4/2	Head	2462	1.89	38.18	1.81	39.18	4.30	-2.57	± 5
2021/4/2	Head	2467	1.90	38.16	1.82	39.17	4.24	-2.57	± 5
2021/4/2	Head	2472	1.90	38.15	1.82	39.17	4.22	-2.60	± 5
2021/4/2	Head	2480	1.91	38.13	1.83	39.16	4.15	-2.63	± 5
2021/4/3	Head	5180	4.65	36.56	4.64	36.02	0.22	1.50	± 5
2021/4/3	Head	5200	4.67	36.51	4.66	36.00	0.30	1.42	± 5
2021/4/3	Head	5220	4.70	36.46	4.68	35.98	0.42	1.34	± 5
2021/4/3	Head	5240	4.73	36.41	4.70	35.96	0.54	1.26	± 5
2021/4/3	Head	5260	4.75	36.37	4.72	35.94	0.65	1.19	± 5
2021/4/3	Head	5280	4.78	36.32	4.74	35.92	0.77	1.11	± 5
2021/4/3	Head	5300	4.80	36.27	4.76	35.90	0.88	1.03	± 5
2021/4/3	Head	5320	4.83	36.22	4.78	35.88	0.95	0.94	± 5
2021/4/3	Head	5500	5.04	35.62	4.96	35.60	1.51	0.06	± 5
2021/4/3	Head	5520	5.06	35.60	4.98	35.58	1.54	0.04	± 5
2021/4/3	Head	5540	5.08	35.57	5.00	35.56	1.56	0.03	± 5
2021/4/3	Head	5560	5.11	35.55	5.03	35.54	1.59	0.02	± 5
2021/4/3	Head	5580	5.13	35.52	5.05	35.52	1.61	0.01	± 5
2021/4/3	Head	5600	5.15	35.50	5.07	35.50	1.64	0.00	± 5
2021/4/3	Head	5620	5.18	35.45	5.09	35.48	1.72	-0.08	± 5
2021/4/3	Head	5640	5.20	35.40	5.11	35.46	1.81	-0.16	± 5
2021/4/3	Head	5660	5.23	35.36	5.13	35.44	1.90	-0.24	± 5
2021/4/3	Head	5680	5.25	35.31	5.15	35.42	1.98	-0.32	± 5
2021/4/3	Head	5700	5.28	35.26	5.17	35.40	2.07	-0.40	± 5
2021/4/3	Head	5720	5.30	35.22	5.19	35.38	2.18	-0.45	± 5
2021/4/3	Head	5745	5.34	35.17	5.22	35.35	2.31	-0.51	± 5
2021/4/3	Head	5765	5.36	35.13	5.24	35.33	2.42	-0.57	± 5
2021/4/3	Head	5785	5.39	35.09	5.26	35.31	2.52	-0.62	± 5
2021/4/3	Head	5800	5.41	35.06	5.27	35.30	2.60	-0.68	± 5
2021/4/3	Head	5805	5.41	35.05	5.28	35.29	2.63	-0.68	± 5
2021/4/3	Head	5825	5.44	35.01	5.30	35.27	2.75	-0.74	± 5

Note:

- 1)The dielectric parameters of the tissue-equivalent liquid should be measured under similar ambient conditions and within 2 °C of the conditions expected during the SAR evaluation to satisfy protocol requirements.
- 2)KDB 865664 was ensured to be applied for probe calibration frequencies greater than or equal to 50MHz of the EUT frequencies.
- 3)The above measured tissue parameters were used in the DASY software to perform interpolation via the DASY software to determine actual dielectric parameters at the test frequencies. The SAR test plots may slightly differ from the table above since the DASY rounds to three significant digits.
- 4) According to FCC TCB workshop April, 2019 RF Exposure Procedures Update(Effective February 19,2019, FCC has permitted the use of single head-tissue simulating liquid specified in IEEE 62209-1- for all SAR tests.

5 SYSTEM CHECK

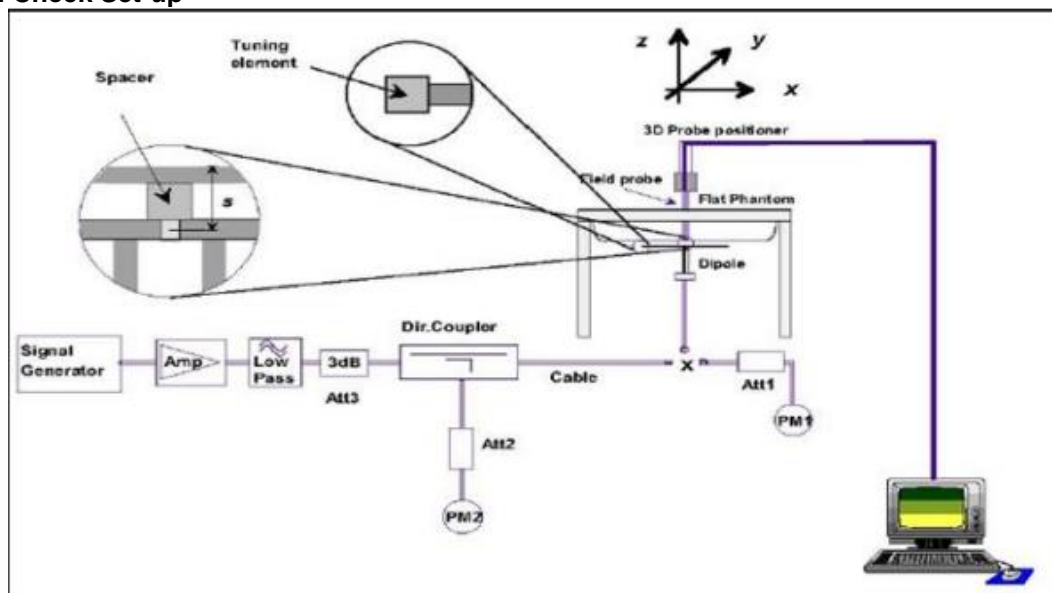
5.1 DESCRIPTION OF SYSTEM CHECK

The manufacturer calibrates the probes annually. Dielectric parameters of the tissue simulants were measured every day using the dielectric probe kit and the network analyzer. A system check measurement was made following the determination of the dielectric parameters of the simulant, using the dipole validation kit. A power level of 250 mW(below 3GHz) or 100mW(3-6GHz), which was placed under the flat section of the twin SAM phantom. The system check results (dielectric parameters and SAR values) are given in the 6.2.

System check results have to be equal or near the values determined during dipole calibration with the relevant liquids and test system ($\pm 10\%$).

System check is performed regularly on all frequency bands where tests are performed with the DASY5 system.

System Check Set-up



5.2 DESCRIPTION OF SYSTEM CHECK

System Check in Tissue Simulating Liquid

The system check is performed for verifying the accuracy of the complete measurement system and performance of the software. The system check is performed with tissue equivalent material according to IEEE P1528 (described above). The following table shows system check results for all frequency bands and tissue liquids used during the tests.

Date	System Dipole			Parameters	Target [W/kg]	Measured [W/kg]	Deviation [%]	Limited [%]
	Type	Serial No.	Liquid					
2021/4/3	D2450V2	973	Head	1g SAR	51.90	52.40	0.96	± 10
2021/4/3	D5GHzV2 (5.2GHz)	1221	Head	1g SAR	76.80	77.00	0.26	± 10
2021/4/3	D5GHzV2 (5.3GHz)	1221	Head	1g SAR	79.00	77.80	-1.52	± 10
2021/4/3	D5GHzV2 (5.6GHz)	1221	Head	1g SAR	80.30	83.70	4.23	± 10
2021/4/3	D5GHzV2 (5.8GHz)	1221	Head	1g SAR	76.90	81.50	5.98	± 10

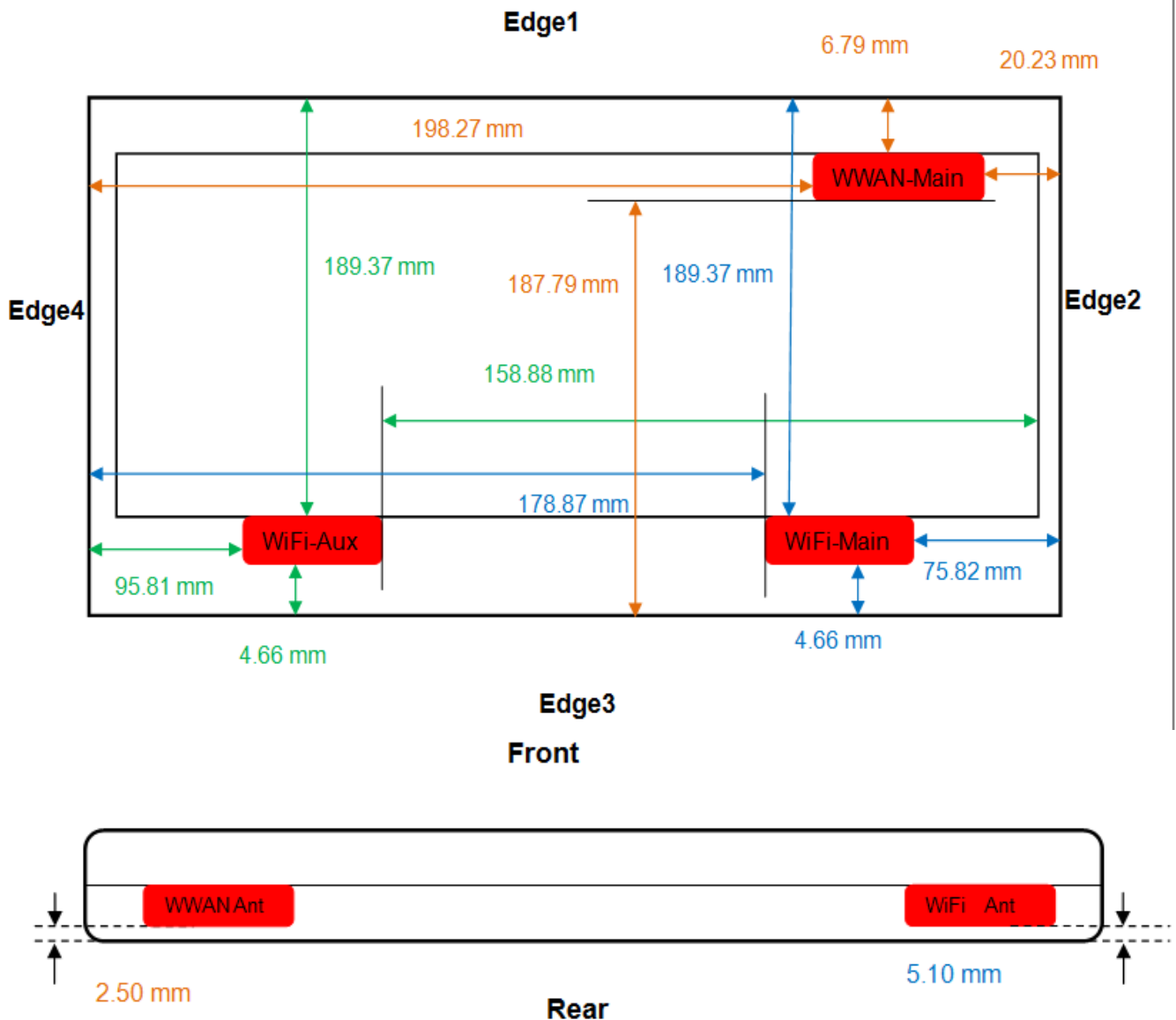
6 OPERATIONAL CONDITIONS DURING TEST

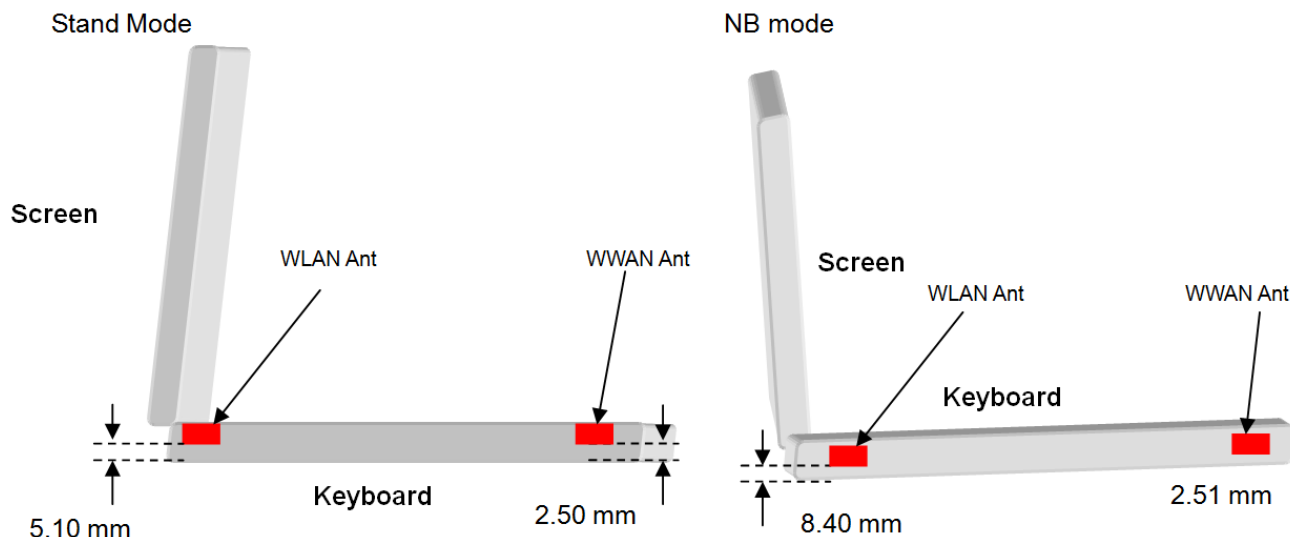
6.1 General Description of Test Procedures

Connection to the EUT is established via air interface with base station An, and the EUT is Set to maximum output power by base station. The EUT battery must be fully charged and checked periodically during the test to ascertain uniform power output. The antenna connected to the output of the base station simulator shall be placed at least 50cm away from the EUT. The signal transmitted by the simulator to the antenna feeding point shall be lower than the output power level of the EUT by at least 30dB.

6.2 Test Position of Portable Devices

Tablet Mode





6.3 Test Position of Portable Devices

Minimum Separation Distance				
Mode	Antenna	Position	Distance (mm)	Evaluation Test
WiFi	Main	Edge1	189.37	No
		Edge2	75.82	No
		Edge3	4.66	Yes
		Edge4	178.87	No
		Rear	5.10	Yes
		Stand	5.10	Yes
		Bottom	8.40	Yes
	Aux	Edge1	189.37	No
		Edge2	158.88	No
		Edge3	4.66	Yes
		Edge4	95.81	No
		Rear	5.10	Yes
		Stand	5.10	Yes
		Bottom	8.40	Yes
Bluetooth	Aux	Edge1	189.37	No
		Edge2	158.88	No
		Edge3	4.66	Yes
		Edge4	95.81	No
		Rear	5.10	Yes
		Stand	5.10	Yes
		Bottom	8.40	No

Note:

For the test position that the rear mode distance is same as stand mode, so we performed the SAR testing on rear mode. The test result can be meet stand mode.

6.4 Test position

6.4.1 Body test configuration

The SAR Exclusion Threshold in KDB 447498 D01 can be applied to determine SAR test exclusion for adjacent edge configurations. The closest distance from the antenna to an EUT edge is used to determine if SAR testing is required for the adjacent edges, with the adjacent edge positioned adjacent the phantom and the edge containing the antenna positioned perpendicular to the phantom.

SAR test reduction and exclusion guidance

(1) The SAR exclusion threshold for distances $< 50\text{mm}$ is defined by the following equation:

$$\frac{(\text{max. power of channel, including tune-up tolerance, mW})}{(\text{min. test separation distance, mm})} \sqrt{\text{Frequency (GHz)}} \leq 3.0$$

The test exclusions are applicable only when the minimum test separation distance is $\leq 50\text{mm}$ and for transmission frequencies between 100MHz and 6GHz . When the minimum test separation distance is $< 5\text{mm}$, a distance of 5mm according to 5) in section 4.1 is applied to determine SAR test exclusion.

(2) The SAR exclusion threshold for distances $> 50\text{mm}$ is defined by the following equation, as illustrated in KDB 447498 D01 Appendix B:

a) at 100 MHz to 1500 MHz

$$[\text{Power allowed at numeric Threshold at } 50\text{ mm in step 1}) + (\text{test separation distance} - 50\text{ mm}) \cdot (f_{(\text{MHz})}/150)]\text{ mW}$$

b) at $> 1500\text{MHz}$ and $\leq 6\text{GHz}$

$$[\text{Power allowed at numeric Threshold at } 50\text{ mm in step 1}) + (\text{test separation distance} - 50\text{ mm}) \cdot 10]\text{ mW}$$

6.5 SAR Exclusion Calculations for WLAN Antenna < 50mm from the User

According to KDB 447498 v06 in section 4.3.1, if the calculated threshold value is > 3 then SAR testing is required.

Antenna	Band	Frequency (MHz)	Output Power		Separation Distances(mm)							Calculated Threshold Value						
			dBm	mW	Edge1	Edge2	Edge3	Edge4	Rear	Bottom	Stand	Edge1	Edge2	Edge3	Edge4	Rear	Bottom	Stand
Main	2.4GHz	2462	15.50	35.48	189.37	75.82	4.66	178.87	5.10	8.40	5.10	>50mm	>50mm	11.95	>50mm	10.92	6.63	10.92
	5.2GHz	5250	12.50	17.78	189.37	75.82	4.66	178.87	5.10	8.40	5.10	>50mm	>50mm	8.74	>50mm	7.99	4.85	7.99
	5.3GHz	5250	12.50	17.78	189.37	75.82	4.66	178.87	5.10	8.40	5.10	>50mm	>50mm	8.74	>50mm	7.99	4.85	7.99
	5.6GHz	5570	13.00	19.95	189.37	75.82	4.66	178.87	5.10	8.40	5.10	>50mm	>50mm	10.10	>50mm	9.23	5.61	9.23
	5.8GHz	5775	11.50	14.13	189.37	75.82	4.66	178.87	5.10	8.40	5.10	>50mm	>50mm	7.29	>50mm	6.66	4.04	6.66
Aux	2.4GHz	2462	15.50	35.48	189.37	158.88	4.66	95.81	5.10	8.40	5.10	>50mm	>50mm	11.95	>50mm	10.92	6.63	10.92
	5.2GHz	5250	12.50	17.78	189.37	158.88	4.66	95.81	5.10	8.40	5.10	>50mm	>50mm	8.74	>50mm	7.99	4.85	7.99
	5.3GHz	5250	12.50	17.78	189.37	158.88	4.66	95.81	5.10	8.40	5.10	>50mm	>50mm	8.74	>50mm	7.99	4.85	7.99
	5.6GHz	5570	13.00	19.95	189.37	158.88	4.66	95.81	5.10	8.40	5.10	>50mm	>50mm	10.10	>50mm	9.23	5.61	9.23
	5.8GHz	5775	11.50	14.13	189.37	158.88	4.66	95.81	5.10	8.40	5.10	>50mm	>50mm	7.29	>50mm	6.66	4.04	6.66
	Bluetooth	2480	5.50	3.55	189.37	158.88	4.66	95.81	5.10	8.40	5.10	>50mm	>50mm	1.12	>50mm	1.10	0.67	1.10

6.6 SAR Exclusion Calculations for WLAN Antenna > 50mm from the User

According to KDB 447498 v06, if the calculated Power threshold is less than the output power then SAR testing is required.

Antenna	Band	Frequency (MHz)	Output Power		Separation Distances(mm)							Calculated Threshold Value						
			dBm	mW	Edge1	Edge2	Edge3	Edge4	Rear	Bottom	Stand	Edge1	Edge2	Edge3	Edge4	Rear	Bottom	Stand
Main	2.4GHz	2462	15.50	35.00	189.37	75.82	4.66	178.87	5.10	8.40	5.10	1489.30	353.80	<50mm	1384.30	<50mm	<50mm	<50mm
	5.2GHz	5250	12.50	18.00	189.37	75.82	4.66	178.87	5.10	8.40	5.10	1459.17	323.67	<50mm	1354.17	<50mm	<50mm	<50mm
	5.3GHz	5250	12.50	18.00	189.37	75.82	4.66	178.87	5.10	8.40	5.10	1459.17	323.67	<50mm	1354.17	<50mm	<50mm	<50mm
	5.6GHz	5570	13.00	20.00	189.37	75.82	4.66	178.87	5.10	8.40	5.10	1457.26	321.76	<50mm	1352.26	<50mm	<50mm	<50mm
	5.8GHz	5775	11.50	14.00	189.37	75.82	4.66	178.87	5.10	8.40	5.10	1456.12	320.62	<50mm	1351.12	<50mm	<50mm	<50mm
Aux	2.4GHz	2462	15.50	35.00	189.37	158.88	4.66	95.81	5.10	8.40	5.10	1489.30	1184.40	<50mm	553.70	<50mm	<50mm	<50mm
	5.2GHz	5250	12.50	18.00	189.37	158.88	4.66	95.81	5.10	8.40	5.10	1459.17	1154.27	<50mm	523.57	<50mm	<50mm	<50mm
	5.3GHz	5250	12.50	18.00	189.37	158.88	4.66	95.81	5.10	8.40	5.10	1459.17	1154.27	<50mm	523.57	<50mm	<50mm	<50mm
	5.6GHz	5570	13.00	20.00	189.37	158.88	4.66	95.81	5.10	8.40	5.10	1457.26	1152.36	<50mm	521.66	<50mm	<50mm	<50mm
	5.8GHz	5775	11.50	14.00	189.37	158.88	4.66	95.81	5.10	8.40	5.10	1456.12	1151.22	<50mm	520.52	<50mm	<50mm	<50mm
	Bluetooth	2480	5.50	4.00	189.37	158.88	4.66	95.81	5.10	8.40	5.10	1488.95	1184.05	<50mm	553.35	<50mm	<50mm	<50mm

7 SAR MEASUREMENT VARIABILITY AND UNCERTAINTY

7.1 SAR measurement variability

Per KDB865664 D01 SAR measurement 100 MHz to 6 GHz, SAR measurement variability must be assessed for each frequency band, which is determined by the SAR probe calibration point and tissue-equivalent medium used for the device measurements. The additional measurements are repeated after the completion of all measurements requiring the same head or body tissue-equivalent medium in a frequency band. The test device should be returned to ambient conditions (normal room temperature) with the battery fully charged before it is re-mounted on the device holder for the repeated measurement(s) to minimize any unexpected variations in the repeated results.

- 1) Repeated measurement is not required when the original highest measured SAR is < 0.80 W/kg; steps 2) through 4) do not apply.
- 2) When the original highest measured SAR is ≥ 0.80 W/kg, repeat that measurement once.
- 3) Perform a second repeated measurement only if the ratio of largest to smallest SAR for the original and first repeated measurements is > 1.20 or when the original or repeated measurement is ≥ 1.45 W/kg (~ 10% from the 1-g SAR limit).
- 4) Perform a third repeated measurement only if the original, first or second repeated measurement is ≥ 1.5 W/kg and the ratio of largest to smallest SAR for the original, first and second repeated measurements is > 1.20 .

The same procedures should be adapted for measurements according to extremity and occupational exposure limits by applying a factor of 2.5 for extremity exposure and a factor of 5 for occupational exposure to the corresponding SAR thresholds.

The detailed repeated measurement results are shown in Section 8.2.

8 CONDUCTED POWER RESULTS

8.1 Conducted power measurement results of Bluetooth

Band	Mode	Channel	Frequency (MHz)	Max Power (dBm)	AVG Power (dBm)
BR	DH5	0	2402	5.50	Not Require
		39	2441	5.50	
		78	2480	5.50	
EDR	2DH5	0	2402	5.50	Not Require
		39	2441	5.50	
		78	2480	5.50	
	3DH5	0	2402	5.50	
		39	2441	5.50	
		78	2480	5.50	
BLE	1M	0	2402	5.50	Not Require
		19	2440	5.50	
		39	2480	5.50	
	2M	0	2402	5.50	
		19	2440	5.50	
		39	2480	5.50	

Note:

1. As per FCC OET KDB 447498 D01, conducted output power and SAR testing are not required for BLE channels when the Max power is under 10 dBm and the separation distance is 5mm.

8.2 Conducted power measurements of Wi-Fi 2.4GHz Band

Band	Mode	Channel	Frequency (MHz)	Data Rate	Max Tune-Up Power (dBm)	AVG Power (dBm)	
						Main	Aux
2.4G	802.11b	1	2412	1	15.50	15.41	
		6	2437	1	15.50	15.44	
		11	2462	1	15.50	15.45	
		12	2467	1	15.50	15.42	
		13	2472	1	15.50	15.45	
	802.11g	1-13	2412-2462	6	15.50	Not Required	
	802.11n20	1-13	2412-2462	HT0	15.50		
	802.11n40	3	2422	HT0	15.50	15.40	
		6	2437	HT0	15.50	15.44	
		9	2452	HT0	15.50	15.45	
		10	2457	HT0	15.50	15.31	
		11	2462	HT0	15.50	15.47	
	802.11b	1	2412	1	15.50		15.34
		6	2437	1	15.50		15.44
		11	2462	1	15.50		15.48
		12	2467	1	15.50		15.41
		13	2472	1	15.50		15.44
	802.11g	1-13	2412-2462	6	15.50	Not Required	
	802.11n20	1-13	2412-2462	HT0	15.50		
	802.11n40	3	2422	HT0	15.50		15.40
		6	2437	HT0	15.50		15.44
		9	2452	HT0	15.50		15.39
		10	2457	HT0	15.50		15.43
		11	2462	HT0	15.50		15.41

Note:

- As per FCC OET KDB 248227 D01, conducted output power and SAR testing are not required for 802.11g/n20/ channels when the highest reported SAR for DSSS is adjusted by the ratio of OFDM to DSSS specified maximum output power and the adjusted SAR is $\leq 1.2\text{W/kg}$.

8.3 Conducted power measurements of 5G UNII_1

Band	Mode	Channel	Frequency (MHz)	Data Rate	Max Tune-Up Power (dBm)	AVG Power (dBm)	
						Main	Aux
UNII_1	802.11a	36-48	5180-5240	6	12.50	Not Required	
	802.11 n20	36-48	5180-5240	HT0	12.50		
	802.11 n40	38-46	5190-5230	HT0	12.50		
	802.11 ac80	42	5210	VHT0	12.50	12.45	
UNII_1	802.11a	36	5180	6	12.50	Not Required	
	802.11 n20	36-48	5180-5240	HT0	12.50		
	802.11 n40	38-46	5190-5230	HT0	12.50		
	802.11 ac80	42	5210	VHT0	12.50		12.42

Note:

1. When the same maximum output power is specified for both bands, begin SAR measurement in U-NII-2A band by applying the OFDM SAR requirements. If the highest reported SAR for a test configuration is ≤ 1.2 W/kg, SAR is not required for U-NII-1 band (see §B.5.2 in this document).
2. The initial test configuration for 2.4 GHz and 5 GHz OFDM transmission modes is determined by the 802.11 configuration with the highest maximum output power specified for production units, including tune-up tolerance, in each standalone and aggregated frequency band. SAR for the initial test configuration is measured using the highest maximum output power channel determined by the default power measurement procedures. When multiple transmission modes (802.11a/g/n/ac) have the same specified maximum output power, largest channel bandwidth, lowest order modulation and lowest data rate, lowest order 802.11 mode is selected (i.e. a, g, n, ac).

8.4 CONDUCTED POWER MEASUREMENTS OF 5G UNII_2A

Band	Mode	Channel	Frequency (MHz)	Data Rate	Max Tune-Up Power (dBm)	AVG Power (dBm)	
						Main	Aux
UNII_2a	802.11a	52-64	5260-5320	6	12.50	Not Required	
	802.11 n20	52-64	5260-5320	HT0	12.50		
	802.11 n40	54-62	5270-5310	HT0	12.50		
	802.11 ac80	58	5290	VHT0	12.50	12.45	
UNII_2a	802.11a	52-64	5260-5320	6	12.50	Not Required	
	802.11 n20	52-64	5260-5320	HT0	12.50		
	802.11 n40	54-62	5270-5310	HT0	12.50		
	802.11 ac80	58	5290	VHT0	12.50		12.44

Note:

1. When the same maximum output power is specified for both bands, begin SAR measurement in U-NII-2A band by applying the OFDM SAR requirements. If the highest reported SAR for a test configuration is ≤ 1.2 W/kg, SAR is not required for U-NII-1 band (see §B.5.2 in this document).
2. The initial test configuration for 2.4 GHz and 5 GHz OFDM transmission modes is determined by the 802.11 configuration with the highest maximum output power specified for production units, including tune-up tolerance, in each standalone and aggregated frequency band. SAR for the initial test configuration is measured using the highest maximum output power channel determined by the default power measurement procedures. When multiple transmission modes (802.11a/g/n/ac) have the same specified maximum output power, largest channel bandwidth, lowest order modulation and lowest data rate, lowest order 802.11 mode is selected (i.e. a, g, n, ac).
3. Largest channel bandwidth is worse than lowest order modulation.

8.5 CONDUCTED POWER MEASUREMENTS OF 5G UNII_2C

Band	Mode	Channel	Frequency (MHz)	Data Rate	Max Tune-Up Power (dBm)	AVG Power (dBm)	
						Main	Aux
UNII_2c	802.11a	100-128	5500-5640	6	13.00	Not Required	
	802.11 n20	100-128	5500-5640	HT0	13.00		
	802.11 n40	102-126	5510-5630	HT0	13.00		
	802.11 ac80	106	5530	VHT0	13.00	12.91	
	802.11 ac80	122	5610	VHT0	13.00	12.94	
UNII_2c	802.11a	100-128	5500-5640	6	13.00	Not Required	
	802.11 n20	100-128	5500-5640	HT0	13.00		
	802.11 n40	102-126	5510-5630	HT0	13.00		
	802.11 ac80	106	5530	VHT0	13.00		12.95
	802.11 ac80	122	5610	VHT0	13.00		12.94

Note:

- When band gap channels between U-NII-2C and U-NII-3 band are supported channels in U-NII-2C band below 5.65 GHz are considered as one band and channels above 5.65 GHz, together with channels in 5.8 GHz U-NII-3 or §15.247 band, are considered as a separate band
- The initial test configuration for 2.4 GHz and 5 GHz OFDM transmission modes is determined by the 802.11 configuration with the highest maximum output power specified for production units, including tune-up tolerance, in each standalone and aggregated frequency band. SAR for the initial test configuration is measured using the highest maximum output power channel determined by the default power measurement procedures. When multiple transmission modes (802.11a/g/n/ac) have the same specified maximum output power, largest channel bandwidth, lowest order modulation and lowest data rate, lowest order 802.11 mode is selected (i.e. a, g, n, ac).
- Largest channel bandwidth is worse than lowest order modulation.

8.6 CONDUCTED POWER MEASUREMENTS OF 5G UNII_3

Band	Mode	Channel	Frequency (MHz)	Data Rate	Max Tune-Up Power (dBm)	AVG Power (dBm)	
						Main	Aux
5.8 UNII_3	802.11a	132-165	5660-5825	6	11.50	Not Required	
	802.11 n20	132-165	5660-5825	HT0	11.50		
	802.11 n40	151	5755	HT0	11.50	11.45	
	802.11 n40	159	5795	HT0	11.50	11.47	
	802.11 ac80	155	5775	VHT0	11.50	11.44	
5.8 UNII_3	802.11a	132-165	5660-5825	6	11.50	Not Required	
	802.11 n20	132-165	5660-5825	HT0	11.50		
	802.11 n40	151	5755	HT0	11.50		11.47
	802.11 n40	159	5795	HT0	11.50		11.41
	802.11 ac80	155	5775	VHT0	11.50		11.44

Note:

- When band gap channels between U-NII-2C and U-NII-3 band are supported channels in U-NII-2C band below 5.65 GHz are considered as one band and channels above 5.65 GHz, together with channels in 5.8 GHz U-NII-3 or §15.247 band, are considered as a separate band
- The initial test configuration for 2.4 GHz and 5 GHz OFDM transmission modes is determined by the 802.11 configuration with the highest maximum output power specified for production units, including tune-up tolerance, in each standalone and aggregated frequency band. SAR for the initial test configuration is measured using the highest maximum output power channel determined by the default power measurement procedures. When multiple transmission modes (802.11a/g/n/ac) have the same specified maximum output power, largest channel bandwidth, lowest order modulation and lowest data rate, lowest order 802.11 mode is selected (i.e. a, g, n, ac)
- Largest channel bandwidth is worse than lowest order modulation.

8.7 SARTEST RESULTS

General Notes:

- Per KDB447498 D01, all measurement SAR results are scaled to the maximum tune-up tolerance limit to demonstrate compliant.
- Per KDB447498 D01, testing of other required channels within the operating mode of a frequency band is not required when the reported 1-g or 10-g SAR for the mid-band or highest output power channel is: ≤ 0.8 W/kg or 2.0 W/kg, for 1-g or 10-g respectively, when the transmission band is ≤ 100 MHz. When the maximum output power variation across the required test channels is $> \frac{1}{2}$ dB, instead of the middle channel, the highest output power channel must be used.
- Per KDB865664 D01, for each frequency band, repeated SAR measurement is required only when the measured SAR is ≥ 0.8 W/kg; if the deviation among the repeated measurement is $\leq 20\%$, and the measured SAR < 1.45 W/kg, only one repeated measurement is required.

WLAN Notes:

1. For exposure conditions with multiple test positions, such as handset operating next to the ear, devices with hotspot mode, procedures for initial test position can be applied. Using the transmission mode determined by the DSSS procedure or initial test configuration, area scans are measured for all positions in an exposure condition. The test position with the highest extrapolated(peak) SAR is used as the initial test position. When the reported SAR of the initial test position is ≤ 0.4 W/kg, further SAR measurement is not required for the other (remaining) test positions. Otherwise, SAR is evaluated at the subsequent highest peak SAR position until the reported SAR result is ≤ 0.8 W/kg or all test positions are measured.
2. Justification for test configurations for WLAN per KDB Publication 248227 for 2.4GHz WIFI single transmission chain operations, the highest measured maximum output power Channel for DSSS was selected for SAR measurement. SAR for OFDM modes(2.4GHz 802.11g/n) was not required due to the maximum allowed powers and the highest reported DSSS SAR. See Section 7.1.4 for more information.
3. Justification for test configurations for WLAN per KDB Publication 248227 for 5GHz WIFI single transmission chain operations, the initial test configuration was selected according to the transmission mode with the highest maximum allowed power. Other transmission mode was not investigated since the highest reported SAR for initial test configuration adjusted by the ratio of maximum output powers is less than 1.2W/kg. See Section 7.1.4 for more information.

9 SAR TEST RESULTS

9.1 Body SAR test results

1. SAR test results of WiFi 2.4G

Mode	Channel	Test Position	Ant Vendor	Ant	Max Tune-up (dBm)	AVG Power (dBm)	Area Scan 1g	SAR 1g	Reported SAR 1g	Note
802.11 b	11	Bottom	AWAN	Main	15.50	15.45	0.164	0.184	0.186	
	11	Rear		Main	15.50	15.45	0.982	0.957	0.968	
	11	Edge3		Main	15.50	15.45	0.185	0.168	0.170	
	1	Rear		Main	15.50	15.41	1.240	1.250	1.276	
	6	Rear		Main	15.50	15.44	1.140	1.130	1.146	
	12	Rear		Main	15.50	15.42	0.830	0.838	0.854	
	13	Rear		Main	15.50	15.45	0.771	0.770	0.779	
802.11 b	11	Bottom	AWAN	Aux	15.50	15.48	0.052	0.111	0.112	
	11	Rear		Aux	15.50	15.48	1.250	1.110	1.115	
	11	Edge3		Aux	15.50	15.48	0.196	0.183	0.184	
	1	Rear		Aux	15.50	15.34	1.370	1.180	1.224	
	6	Rear		Aux	15.50	15.44	1.330	1.150	1.166	
	12	Rear		Aux	15.50	15.41	1.310	1.140	1.164	
	13	Rear		Aux	15.50	15.44	1.320	1.140	1.156	
802.11 n40	9	Bottom	AWAN	Main	15.50	15.45	0.175	0.184	0.186	
	9	Rear		Main	15.50	15.45	1.010	1.000	1.012	
	9	Edge3		Main	15.50	15.45	0.171	0.162	0.164	
	3	Rear		Main	15.50	15.40	1.240	1.200	1.228	
	6	Rear		Main	15.50	15.44	1.100	1.080	1.095	
	10	Rear		Main	15.50	15.31	1.090	1.070	1.118	
	11	Rear		Main	15.50	15.47	1.060	1.040	1.047	
802.11 n40	6	Bottom	AWAN	Aux	15.50	15.44	0.049	0.111	0.113	
	6	Rear		Aux	15.50	15.44	1.270	1.100	1.115	
	6	Edge3		Aux	15.50	15.44	0.194	0.180	0.183	
	3	Rear		Aux	15.50	15.40	1.310	1.130	1.156	
	9	Rear		Aux	15.50	15.39	1.270	1.100	1.128	
	10	Rear		Aux	15.50	15.43	1.440	1.240	1.260	
	11	Rear		Aux	15.50	15.41	1.500	1.290	1.317	
	11	Rear	AWAN	Aux	15.50	15.41	1.470	1.290	1.317	2
			INPAQ		15.50	15.41	1.280	1.120	1.143	1

Note:

1.The result used an other antenna to spot check for worst channel of the original antenna that the SAR result can be meet and compliant.

2.Repeated measurements are required only when the measured SAR is ≥ 0.80 W/kg. If the measured SAR values are < 1.45 W/kg with $\leq 20\%$ variation, only one repeated measurement is required to reaffirm that the results are not expected to have substantial variations, which may introduce significant compliance concerns.

(Per KDB 865664 D01 SAR measurement 100 MHz to 6 GHz v01r04)

Original SAR = 1.290 W/kg, therefore second times repeat SAR is required.

Repeat SAR = 1.290 W/kg < 1.45 W/kg

SAR variation= 0% $< 20\%$

2. SAR test results of WiFi 5G

Band	Mode	Channel	Ant Vendor	Test Position	Ant	Max Tune-up (dBm)	AVG Power (dBm)	Area Scan	SAR 1g	Reported SAR 1g	Note
UNII_1&2a	802.11 ac80	58	AWAN	Bottom	Main	12.50	12.45	0.285	0.458	0.463	
		42		Rear	Main	12.50	12.45	0.624	0.890	0.900	
		58		Edge 3	Main	12.50	12.45	0.144	0.215	0.217	
		58		Rear	Main	12.50	12.44	0.762	0.995	1.009	
		58		Bottom	Aux	12.50	12.44	0.222	0.380	0.385	
		42		Rear	Aux	12.50	12.42	0.706	0.927	0.944	
		58		Edge 3	Aux	12.50	12.44	0.220	0.305	0.309	
		58		Rear	Aux	12.50	12.44	0.955	1.170	1.186	
UNII_2c	802.11 ac80	122	AWAN	Bottom	Main	13.00	12.94	0.263	0.459	0.465	
		106		Rear	Main	13.00	12.91	0.820	1.080	1.103	
		122		Edge 3	Main	13.00	12.94	0.241	0.322	0.326	
		122		Rear	Main	13.00	12.94	0.854	1.130	1.146	
		106		Bottom	Aux	13.00	12.95	0.452	0.653	0.661	
		106		Rear	Aux	13.00	12.95	0.952	1.130	1.143	
		106		Edge 3	Aux	13.00	12.95	0.585	0.702	0.710	
		122		Rear	Aux	13.00	12.94	0.950	1.190	1.207	
UNII_3	802.11 ac80	155	AWAN	Bottom	Main	11.50	11.44	0.253	0.472	0.479	
		155		Rear	Main	11.50	11.44	0.881	1.190	1.207	
		155		Edge 3	Main	11.50	11.44	0.21	0.339	0.344	
	802.11 n40	151		Rear	Main	11.50	11.45	0.720	1.010	1.022	
		159		Rear	Main	11.50	11.47	0.733	1.060	1.067	
	802.11 ac80	155		Bottom	Aux	11.50	11.44	0.231	0.421	0.427	
		155		Rear	Aux	11.50	11.44	0.658	0.917	0.930	
		155		Edge 3	Aux	11.50	11.44	0.218	0.170	0.172	
	802.11 n40	151		Rear	Aux	11.50	11.47	0.574	0.804	0.810	
		159		Rear	Aux	11.50	11.41	0.593	0.823	0.840	
UNII_3	802.11 n40	155	INPAQ	Rear	Main	11.50	11.44	0.702	0.994	1.008	1
		155	AWAN	Rear	Main	11.50	11.44	0.780	1.110	1.125	2

Note:

1. The result used an other antenna to spot check for worst channel of the original antenna that the SAR result can be meet and compliant.

2. Repeated measurements are required only when the measured SAR is ≥ 0.80 W/kg. If the measured SAR values are < 1.45 W/kg with $\leq 20\%$ variation, only one repeated measurement is required to reaffirm that the results are not expected to have substantial variations, which may introduce significant compliance concerns. (Per KDB 865664 D01 SAR measurement 100 MHz to 6 GHz v01r04)

Original SAR = 1.190 W/kg, therefore second times repeat SAR is required.

Repeat SAR = 1.110 W/kg < 1.45 W/kg

SAR variation = $-6.722\% < 20\%$

10. MULTIPLE TRANSMITTER EVALUATION

10.1 STAND-ALONE SAR TEST EXCLUSION

SAR compliance for simultaneous transmission must be considered when the maximum duration of overlapping transmissions, including network hand-offs, is greater than 30 seconds. This device contains multiple transmitters that may operate simultaneously, and therefore requires a simultaneous transmission analysis.

The Simultaneous Transmission Possibilities of this device are as below:

No.	Configuration
1	WLAN 2.4G(Main)+BT
2	RLAN 5G(Main)+BT
3	WLAN 2.4G(Main)+ WLAN 2.4G(Aux)
4	RLAN 5G(Main)+ RLAN 5G(Aux)
5	RLAN 5G(Main)+ RLAN 5G(Aux)+BT

10.2 Simultaneous transmission conditions

KDB 447498 D01 General RF Exposure Guidance v06, introduces a new formula for calculating the SAR to Peak Location Ratio (SPLSR) between pairs of simultaneously transmitting antennas:

A new threshold of 0.04 is also introduced in the KDB. Thus, in order for a pair of simultaneous transmitting antennas with the sum of 1-g SAR > 1.6 W/kg to qualify for exemption from Simultaneous Transmission SAR measurements, it has to satisfy the condition of:

$$(SAR_1 + SAR_2)^{1.5} / R_i \leq 0.04$$

$$SPLSR = (SAR_1 + SAR_2)^{1.5} / R_i$$

Where:

SAR₁ is the highest Reported or estimated SAR for the first of a pair of simultaneous transmitting antennas, in a specific test operating mode and exposure condition

SAR₂ is the highest Reported or estimated SAR for the second of a pair of simultaneous transmitting antennas, in the same test operating mode and exposure condition as the first

R_i is the separation distance between the pair of simultaneous transmitting antennas. When the SAR is measured, for both antennas in the pair, it is determined by the actual x, y and z coordinates in the 1-g SAR for each SAR peak location, based on the extrapolated and interpolated result in the zoom scan measurement, using the formula of $[(x_1-x_2)^2 + (y_1-y_2)^2 + (z_1-z_2)^2]$

10.3 ESTIMATED SAR FOR SIMULTANEOUS TRANSMISSION SAR ANALYSIS

Considerations for SAR estimation

- When standalone SAR test exclusion applies, standalone SAR must also be estimated to determine simultaneous transmission SAR test exclusion.
- Dedicated Host Approach criteria for SAR test exclusion is likewise applied to SAR estimation, with certain distinctions between test exclusion and SAR estimation:
 - When the separation distance from the antenna to an adjacent edge is ≤ 5 mm, a distance of 5 mm is applied for SAR estimation; this is the same between test exclusion and SAR estimation calculations.
 - When the separation distance from the antenna to an adjacent edge is > 5 mm but ≤ 50 mm, the actual antenna-to-edge separation distance is applied for SAR estimation.
 - When the minimum test separation distance is > 50 mm, the estimated SAR value is 0.4 W/kg

11.3.1 ESTIMATED SAR FOR BLUETOOTH

According to section 8.1, the Bluetooth must be estimated according to following to determine simultaneous transmission SAR test exclusion:

- $(\text{max. power of channel, including tune-up tolerance, mW}) / (\text{min. test separation distance, mm}) \cdot [\sqrt{f_{\text{(GHz)}}/x}]$ W/kg for test separation distances ≤ 50 mm; where $x = 7.5$ for 1-g SAR, and $x = 18.75$ for 10-g SAR.
- 0.4 W/kg for 1-g SAR and 1.0 W/kg for 10-g SAR, when the test separation distances is > 50 mm.

NB Mode

Mode	Band	Frequency (MHz)	Output Power		Separation Distances(mm)	Estimated 1-g SAR (W/Kg)
			dBm	mW	NB Bottom	NB Bottom
Bluetooth	2.4GHz	2480	5.50	4.00	8.40	0.100

Stand Mode

Mode	Band	Frequency (MHz)	Output Power		Separation Distances(mm)	Estimated 1-g SAR (W/Kg)
			dBm	mW	Stand	Stand
Bluetooth	2.4GHz	2480	5.50	4.00	5.10	0.165

Tablet Mode

Mode	Band	Frequency (MHz)	Output Power		Separation Distances(mm)					Estimated 1-g SAR (W/Kg)				
			dBm	mW	Edge1	Edge2	Edge3	Edge4	Rear	Edge1	Edge2	Edge3	Edge4	Rear
Bluetooth	2.4GHz	2480	5.50	4.00	189.37	158.88	4.66	95.81	5.10	0.004	0.005	0.180	0.009	0.165

11.3 About BT/WiFi and WWAN

Test Position SAR _{1g} (W/kg)	Rear	Edge1	Edge2	Edge3	Bottom
2.4GWiFi_Main	1.276			0.170	0.186
2.4GWiFi_Aux	1.317			0.184	0.113
5.2 & 5.3G WiFi_Main	1.009			0.217	0.463
5.2 & 5.3G WiFi_Aux	1.186			0.309	0.385
5.6G WiFi_Main	1.146			0.326	0.465
5.6G WiFi_Aux	1.207			0.710	0.661
5.8G WiFi_Main	1.207			0.344	0.479
5.8G WiFi_Aux	0.930			0.172	0.427
BT	0.165	0.004	0.005	0.180	0.100
WLAN+WLAN(Main+Aux) MAX \sum SAR _{1g}	2.593			1.054	1.140
WLAN+BT MAX \sum SAR _{1g}	1.441	0.004	0.005	0.524	0.579

Note:

1. MAX. \sum SAR_{1g}= 2.593 W/Kg>1.6 W/Kg, so Peak location SAR are required.

2. We select WWAN (Main) and WLAN (Aux) for Peak location SAR, because both antennas are closer in Appendix E.

12. Test Layout

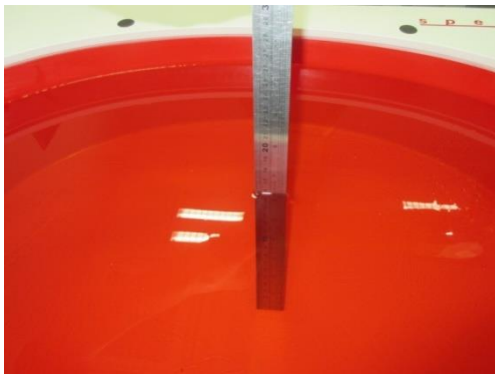
Specific Absorption Rate Test Layout



Liquid depth in the flat Phantom ($\geq 15\text{cm}$ depth)

HSL(2450MHz)

HSL(5GHz)



Appendix A. SAR Plots of System Verification

(Pls See BTL-FCC SAR-2-2102T172A_Appendix A.)

Appendix B. SAR Plots of SAR Measurement

(Pls See BTL-FCC SAR-2-2102T172A_Appendix B.)

Appendix C. Calibration Certificate

(Pls See BTL-FCC SAR-2-2102T172A_Appendix C.)

Appendix D. Photographs of the Test Set-Up

(Pls See BTL-FCC SAR-2-2102T172A_Appendix D.)

Appendix E. SAR SPLSR

(Pls See BTL-FCC SAR-2-2102T172A_Appendix E.)

End of Test Report