



FCC SAR TEST REPORT

FCC ID : TX2-RTL8822CE
Equipment : 802.11a/b/g/n/ac RTL8822CE Combo module
Brand Name : Realtek
Model Name : RTL8822CE
Applicant : Realtek Semiconductor Corp.
No. 2, Innovation Road II, Hsinchu Science Park, Hsinchu
300, Taiwan
Standard : FCC 47 CFR Part 2 (2.1093)

The product was installed into Notebook Computer (Brand Name HP, Model Name: HSN-I39C) during test.

The product was received on Jul. 21, 2020 and testing was started from Aug. 13, 2020 and completed on Aug. 21, 2020. We, SPORTON INTERNATIONAL INC., would like to declare that the tested sample provide by manufacturer and the test data has been evaluated in accordance with the test procedures given in 47 CFR Part 2.1093 and FCC KDB and has been pass the FCC requirement.

The test results in this report apply exclusively to the tested model / sample. Without written approval of SPORTON INTERNATIONAL INC. EMC & Wireless Communications Laboratory, the test report shall not be reproduced except in full.



Approved by: Cona Huang / Deputy Manager

SPORTON INTERNATIONAL INC. EMC & Wireless Communications Laboratory
No. 52, Huaya 1st Rd., Guishan Dist., Taoyuan City, Taiwan (R.O.C.)



Table of Contents

1. Statement of Compliance 4

2. Guidance Applied..... 5

3. Equipment Under Test (EUT) Information 5

 3.1 General Information 5

4. RF Exposure Limits..... 7

 4.1 Uncontrolled Environment..... 7

 4.2 Controlled Environment..... 7

5. Specific Absorption Rate (SAR)..... 8

 5.1 Introduction 8

 5.2 SAR Definition..... 8

6. System Description and Setup 9

 6.1 Test Side Location..... 9

 6.2 E-Field Probe 10

 6.3 Data Acquisition Electronics (DAE) 10

 6.4 Phantom..... 11

 6.5 Device Holder..... 12

7. Measurement Procedures 13

 7.1 Spatial Peak SAR Evaluation 13

 7.2 Power Reference Measurement..... 14

 7.3 Area Scan 14

 7.4 Zoom Scan..... 15

 7.5 Volume Scan Procedures..... 15

 7.6 Power Drift Monitoring..... 15

8. Test Equipment List 16

9. System Verification 19

 9.1 Tissue Simulating Liquids..... 19

 9.2 Tissue Verification 20

 9.3 System Performance Check Results..... 22

10. WiFi/Bluetooth Output Power (Unit: dBm) 24

11. Bluetooth Exclusions Applied 56

12. Antenna Location 58

13. SAR Test Results 61

 13.1 Body SAR for Tonail WWAN Sku's WLAN..... 62

 13.2 Body SAR for Tonail WLAN..... 63

 13.3 Body SAR for Pocket WLAN 64

 13.4 Repeated SAR Measurement 64

14. Simultaneous Transmission Analysis for Tonail WWAN Sku's WLAN..... 65

 14.1 Body Exposure Conditions 65

 14.2 SPLSR Evaluation and Analysis..... 66

15. Simultaneous Transmission Analysis for Tonail WLAN..... 67

 15.1 Body Exposure Conditions 67

16. Simultaneous Transmission Analysis for Pocket WLAN..... 68

 16.1 Body Exposure Conditions 68

17. Uncertainty Assessment 69

18. References..... 69

Appendix A-1. Plots of System Performance Check for Tonail WWAN Sku's WLAN

Appendix A-2. Plots of System Performance Check for Tonail WLAN

Appendix A-3. Plots of System Performance Check for Pocket WLAN

Appendix B-1. Plots of High SAR Measurement for Tonail WWAN Sku's WLAN

Appendix B-2. Plots of High SAR Measurement for Tonail WLAN

Appendix B-3. Plots of High SAR Measurement for Pocket WLAN

Appendix C-1. DASY Calibration Certificate for Tonail WWAN Sku's WLAN

Appendix C-2. DASY Calibration Certificate for Tonail WLAN

Appendix C-3. DASY Calibration Certificate for Pocket WLAN

Appendix D. Test Setup Photos



History of this test report

Report No.	Version	Description	Issued Date
FA071625-01	01	Initial issue of report	Sep. 09, 2020



1. Statement of Compliance

The maximum results of Specific Absorption Rate (SAR) found during testing for Realtek Semiconductor Corp., 802.11a/b/g/n/ac RTL8822CE Combo module, RTL8822CE, are as follows.

<Tonail WWAN Sku's WLAN>

Table with 5 columns: Equipment Class, Frequency Band, Highest SAR Summary (Body, 1g SAR), Highest Simultaneous Transmission (1g SAR), and Date of Testing. Rows include DTS and NII for 2.4GHz and 5GHz WLAN bands.

<Tonail WLAN>

Table with 5 columns: Equipment Class, Frequency Band, Highest SAR Summary (Body, 1g SAR), Highest Simultaneous Transmission (1g SAR), and Date of Testing. Rows include DTS and NII for 2.4GHz and 5GHz WLAN bands.

< Pocket WLAN >

Table with 5 columns: Equipment Class, Frequency Band, Highest SAR Summary (Body, 1g SAR), Highest Simultaneous Transmission (1g SAR), and Date of Testing. Rows include DTS and NII for 2.4GHz and 5GHz WLAN bands.

Sporton Lab is accredited to ISO 17025 by Taiwan Accreditation Foundation (TAF code: 1190) and the FCC designation No. TW1190 under the FCC 2.948(e) by Mutual Recognition Agreement (MRA) in FCC test. This device is in compliance with Specific Absorption Rate (SAR) for general population/uncontrolled exposure limits (1.6 W/kg) specified in FCC 47 CFR part 2 (2.1093) and ANSI/IEEE C95.1-1992, and had been tested in accordance with the measurement methods and procedures specified in IEEE 1528-2013 and FCC KDB publications.

Reviewed by: Jason Wang
Report Producer: Daisy Peng



2. Guidance Applied

The Specific Absorption Rate (SAR) testing specification, method, and procedure for this device is in accordance with the following standards, if the KDB standards were not list within TAF approval, because it is include in the FCC KDB 447498.

- FCC 47 CFR Part 2 (2.1093)
- ANSI/IEEE C95.1-1992
- IEEE 1528-2013
- FCC KDB 865664 D01 SAR Measurement 100 MHz to 6 GHz v01r04
- FCC KDB 865664 D02 SAR Reporting v01r02
- FCC KDB 447498 D01 General RF Exposure Guidance v06
- FCC KDB 248227 D01 802.11 Wi-Fi SAR v02r02
- FCC KDB 616217 D04 SAR for laptop and tablets v01r02

3. Equipment Under Test (EUT) Information

3.1 General Information

Product Feature & Specification	
Equipment Name	802.11a/b/g/n/ac RTL8822CE Combo module
Brand Name	Realtek
Model Name	RTL8822CE
FCC ID	TX2-RTL8822CE
Wireless Technology and Frequency Range	WLAN 2.4GHz Band: 2400 MHz ~ 2483.5 MHz WLAN 5.2GHz Band: 5150 MHz ~ 5250 MHz WLAN 5.3GHz Band: 5250 MHz ~ 5350 MHz WLAN 5.6GHz Band: 5470 MHz ~ 5725 MHz WLAN 5.8GHz Band: 5725 MHz ~ 5825 MHz Bluetooth: 2400 MHz ~ 2483.5 MHz
Mode	WLAN: 802.11a/b/g/n/ac HT20/HT40/VHT20/VHT40/VHT80 Bluetooth BR/EDR/LE
EUT Stage	Production Unit
Remark:	
1. The device is integrated into different antenna location host; RF exposure is full testing in these hosts. 2. For Tonail WLAN had three antenna vendors; RF exposure evaluation is selected Hong-Bo as the main tested, AWAN/ INPAQ will spot check worst case found in Hong-Bo. 3. For Pocket WLAN had three antenna vendors; RF exposure evaluation is selected Hong-Bo as the main tested, AWAN/ INPAQ will spot check worst case found in Hong-Bo.	

<Tonail WWAN Sku's WLAN>

Vendor	Hong-Bo							
Antenna	(Tx1) (PIFA)				(Tx2) (PIFA)			
Part Number	6036B0279601 (260-27448)				6036B0279201 (260-27449)			
Frequency	2.4G 2400-2500MHz	5150-5350MHz	5470-5725MHz	5725-5850MHz	2.4G 2400-2500MHz	5150-5350MHz	5470-5725MHz	5725-5850MHz
Gain (dBi)	-0.32	2.79	2.98	2.98	0.60	1.55	2.97	2.55



<Tonail WLAN>

WLAN Antenna Vendor 1								
Vendor	Hong-Bo							
Antenna	(Tx1) (PIFA)				(Tx2) (PIFA)			
Part Number	6036B0279501 (260-27446)				6036B0279301 (260-27447)			
Frequency	2400-2500MHz	5150-5350MHz	5470-5725MHz	5725-5850MHz	2400-2500MHz	5150-5350MHz	5470-5725MHz	5725-5850MHz
Gain (dBi)	-0.32	1.05	0.28	0.28	0.29	0.97	1.39	2.15

WLAN Antenna Vendor 2								
Vendor	AWAN							
Antenna	(Tx1) (PIFA)				(Tx2) (PIFA)			
Part Number	6036B0278801 (AUP6Y-100077)				6036B0279001 (AUP6Y-100078)			
Frequency	2400-2500MHz	5150-5350MHz	5470-5725MHz	5725-5850MHz	2400-2500MHz	5150-5350MHz	5470-5725MHz	5725-5850MHz
Gain (dBi)	-2.12	-0.79	-0.91	0.21	-1.98	-2.34	-0.28	-0.28

WLAN Antenna Vendor 3								
Vendor	INPAQ							
Antenna	(Tx1) (PIFA)				(Tx2) (PIFA)			
Part Number	6036B0280301 (WA-P-LB-02-788)				6036B0280201 (WA-P-LB-02-789)			
Frequency	2400-2500MHz	5150-5350MHz	5470-5725MHz	5725-5850MHz	2400-2500MHz	5150-5350MHz	5470-5725MHz	5725-5850MHz
Gain (dBi)	-0.34	-1.75	0.19	0.19	-1.53	-0.05	-1.65	-2.01

<Pocket WLAN>

WLAN antenna vendor 1								
Vendor	Hong-Bo							
Antenna	(Tx1) (PIFA)				(Tx2) (PIFA)			
Part Number	6036B0278901 (260-27450)				6036B0279401 (260-27451)			
Frequency	2400-2500MHz	5150-5350MHz	5470-5725MHz	5725-5850MHz	2400-2500MHz	5150-5350MHz	5470-5725MHz	5725-5850MHz
Gain (dBi)	1.92	0.16	0.77	-0.28	1.81	-0.25	0.45	0.22

WLAN antenna vendor 2								
Vendor	AWAN							
Antenna	(Tx1) (PIFA)				(Tx2) (PIFA)			
Part Number	6036B0279901 AUP6Y-100079				6036B0279101 AUP6Y-100080			
Frequency	2400-2500MHz	5150-5350MHz	5470-5725MHz	5725-5850MHz	2400-2500MHz	5150-5350MHz	5470-5725MHz	5725-5850MHz
Gain (dBi)	-2.66	0.50	0.85	-2.47	-1.01	1.61	2.51	2.17

WLAN antenna vendor 3								
Vendor	INPAQ							
Antenna	(Tx1) (PIFA)				(Tx2) (PIFA)			
Part Number	6036B0280101 (WA-P-LB-02-786)				6036B0280001 (WA-P-LB-02-787)			
Frequency	2400-2500MHz	5150-5350MHz	5470-5725MHz	5725-5850MHz	2400-2500MHz	5150-5350MHz	5470-5725MHz	5725-5850MHz
Gain (dBi)	0.55	1.77	0.79	1.33	1.30	-0.15	-0.80	-1.79



4. RF Exposure Limits

4.1 Uncontrolled Environment

Uncontrolled Environments are defined as locations where there is the exposure of individuals who have no knowledge or control of their exposure. The general population/uncontrolled exposure limits are applicable to situations in which the general public may be exposed or in which persons who are exposed as a consequence of their employment may not be made fully aware of the potential for exposure or cannot exercise control over their exposure. Members of the general public would come under this category when exposure is not employment-related; for example, in the case of a wireless transmitter that exposes persons in its vicinity.

4.2 Controlled Environment

Controlled Environments are defined as locations where there is exposure that may be incurred by persons who are aware of the potential for exposure, (i.e. as a result of employment or occupation). In general, occupational/controlled exposure limits are applicable to situations in which persons are exposed as a consequence of their employment, who have been made fully aware of the potential for exposure and can exercise control over their exposure. The exposure category is also applicable when the exposure is of a transient nature due to incidental passage through a location where the exposure levels may be higher than the general population/uncontrolled limits, but the exposed person is fully aware of the potential for exposure and can exercise control over his or her exposure by leaving the area or by some other appropriate means.

Limits for Occupational/Controlled Exposure (W/kg)

Whole-Body	Partial-Body	Hands, Wrists, Feet and Ankles
0.4	8.0	20.0

Limits for General Population/Uncontrolled Exposure (W/kg)

Whole-Body	Partial-Body	Hands, Wrists, Feet and Ankles
0.08	1.6	4.0

1. Whole-Body SAR is averaged over the entire body, partial-body SAR is averaged over any 1gram of tissue defined as a tissue volume in the shape of a cube. SAR for hands, wrists, feet and ankles is averaged over any 10 grams of tissue defined as a tissue volume in the shape of a cube.

5. Specific Absorption Rate (SAR)

5.1 Introduction

SAR is related to the rate at which energy is absorbed per unit mass in an object exposed to a radio field. The SAR distribution in a biological body is complicated and is usually carried out by experimental techniques or numerical modeling. The standard recommends limits for two tiers of groups, occupational/controlled and general population/uncontrolled, based on a person's awareness and ability to exercise control over his or her exposure. In general, occupational/controlled exposure limits are higher than the limits for general population/uncontrolled.

5.2 SAR Definition

The SAR definition is the time derivative (rate) of the incremental energy (dW) absorbed by (dissipated in) an incremental mass (dm) contained in a volume element (dv) of a given density (ρ). The equation description is as below:

$$SAR = \frac{d}{dt} \left(\frac{dW}{dm} \right) = \frac{d}{dt} \left(\frac{dW}{\rho dv} \right)$$

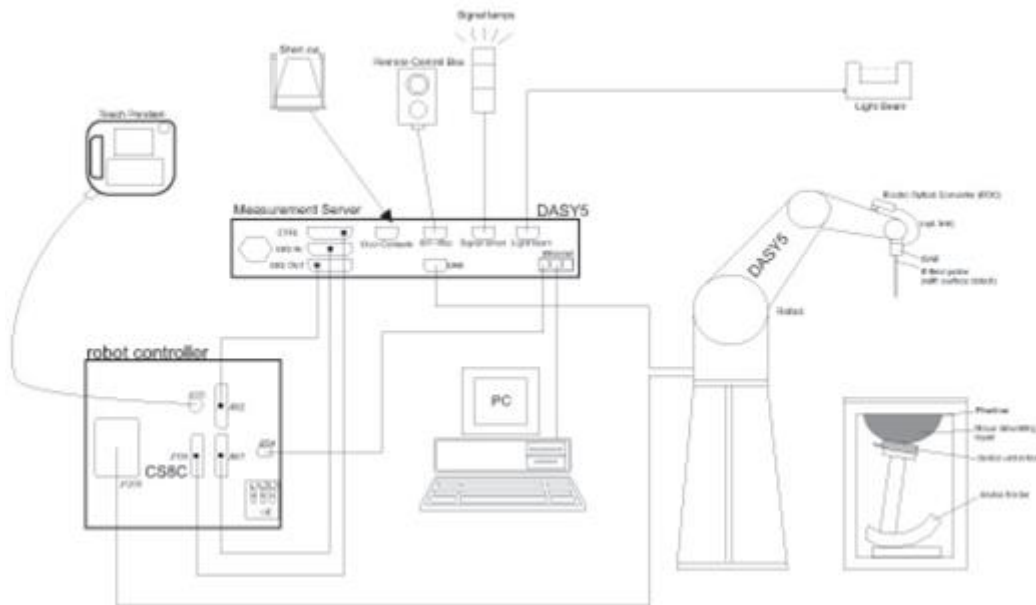
SAR is expressed in units of Watts per kilogram (W/kg)

$$SAR = \frac{\sigma |E|^2}{\rho}$$

Where: σ is the conductivity of the tissue, ρ is the mass density of the tissue and E is the RMS electrical field strength.

6. System Description and Setup

The DASYS system used for performing compliance tests consists of the following items:



- A standard high precision 6-axis robot with controller, teach pendant and software. An arm extension for accommodating the data acquisition electronics (DAE).
- An isotropic Field probe optimized and calibrated for the targeted measurement.
- A data acquisition electronics (DAE) which performs the signal amplification, signal multiplexing, AD-conversion, offset measurements, mechanical surface detection, collision detection, etc. The unit is battery powered with standard or rechargeable batteries. The signal is optically transmitted to the EOC.
- The Electro-optical converter (EOC) performs the conversion from optical to electrical signals for the digital communication to the DAE. To use optical surface detection, a special version of the EOC is required. The EOC signal is transmitted to the measurement server.
- The function of the measurement server is to perform the time critical tasks such as signal filtering, control of the robot operation and fast movement interrupts.
- The Light Beam used is for probe alignment. This improves the (absolute) accuracy of the probe positioning.
- A computer running WinXP or Win7 and the DASYS software.
- Remote control and teach pendant as well as additional circuitry for robot safety such as warning lamps, etc.
- The phantom, the device holder and other accessories according to the targeted measurement.

6.1 Test Side Location


Sporton Lab and below test site location are accredited to ISO 17025 by Taiwan Accreditation Foundation (TAF code: 1190 and 0007) and the FCC designation No. TW1190 and TW0007 under the FCC 2.948(e) by Mutual Recognition Agreement (MRA) in FCC test.

Test Site	SPORTON INTERNATIONAL INC. EMC & Wireless Communications Laboratory			
Test Site Location	TW1190 No. 52, Huaya 1st Rd., Guishan Dist., Taoyuan City 333, CHINESE TAIPEI		TW0007 No. 58, Aly. 75, Ln. 564, Wehnuia 3rd, Rd., Guishan Dist., Taoyuan City, CHINESE TAIPEI	
	SAR01-HY	SAR03-HY	SAR08-HY	SAR09-HY
Test Site No.	SAR04-HY	SAR05-HY	SAR11-HY	SAR12-HY
	SAR06-HY	SAR10-HY		


6.2 E-Field Probe

The SAR measurement is conducted with the dosimetric probe (manufactured by SPEAG).The probe is specially designed and calibrated for use in liquid with high permittivity. The dosimetric probe has special calibration in liquid at different frequency. This probe has a built in optical surface detection system to prevent from collision with phantom.

<ES3DV3 Probe>

Construction	Symmetric design with triangular core Interleaved sensors Built-in shielding against static charges PEEK enclosure material (resistant to organic solvents, e.g., DGBE)	
Frequency	10 MHz – 4 GHz; Linearity: ± 0.2 dB (30 MHz – 4 GHz)	
Directivity	± 0.2 dB in TSL (rotation around probe axis) ± 0.3 dB in TSL (rotation normal to probe axis)	
Dynamic Range	5 μ W/g – >100 mW/g; Linearity: ± 0.2 dB	
Dimensions	Overall length: 337 mm (tip: 20 mm) Tip diameter: 3.9 mm (body: 12 mm) Distance from probe tip to dipole centers: 3.0 mm	

<EX3DV4 Probe>

Construction	Symmetric design with triangular core Built-in shielding against static charges PEEK enclosure material (resistant to organic solvents, e.g., DGBE)	
Frequency	10 MHz – >6 GHz Linearity: ± 0.2 dB (30 MHz – 6 GHz)	
Directivity	± 0.3 dB in TSL (rotation around probe axis) ± 0.5 dB in TSL (rotation normal to probe axis)	
Dynamic Range	10 μ W/g – >100 mW/g Linearity: ± 0.2 dB (noise: typically <1 μ W/g)	
Dimensions	Overall length: 337 mm (tip: 20 mm) Tip diameter: 2.5 mm (body: 12 mm) Typical distance from probe tip to dipole centers: 1 mm	

6.3 Data Acquisition Electronics (DAE)

The data acquisition electronics (DAE) consists of a highly sensitive electrometer-grade preamplifier with auto-zeroing, a channel and gain-switching multiplexer, a fast 16 bit AD-converter and a command decoder and control logic unit. Transmission to the measurement server is accomplished through an optical downlink for data and status information as well as an optical uplink for commands and the clock.


The input impedance of the DAE is 200 MOhm; the inputs are symmetrical and floating. Common mode rejection is above 80 dB.



Fig 5.1 Photo of DAE

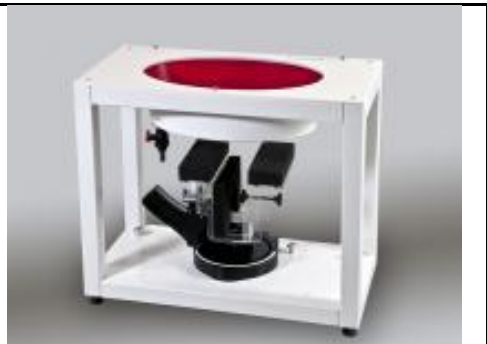
6.4 Phantom

<SAM Twin Phantom>

Shell Thickness	2 ± 0.2 mm; Center ear point: 6 ± 0.2 mm	
Filling Volume	Approx. 25 liters	
Dimensions	Length: 1000 mm; Width: 500 mm; Height: adjustable feet	
Measurement Areas	Left Hand, Right Hand, Flat Phantom	

The bottom plate contains three pair of bolts for locking the device holder. The device holder positions are adjusted to the standard measurement positions in the three sections. A white cover is provided to tap the phantom during off-periods to prevent water evaporation and changes in the liquid parameters. On the phantom top, three reference markers are provided to identify the phantom position with respect to the robot.

<ELI Phantom>

Shell Thickness	2 ± 0.2 mm (sagging: <1%)	
Filling Volume	Approx. 30 liters	
Dimensions	Major ellipse axis: 600 mm Minor axis: 400 mm	

The ELI phantom is intended for compliance testing of handheld and body-mounted wireless devices in the frequency range of 30 MHz to 6 GHz. ELI4 is fully compatible with standard and all known tissue simulating liquids.

6.5 Device Holder

<Mounting Device for Hand-Held Transmitter>

In combination with the Twin SAM V5.0/V5.0c or ELI phantoms, the Mounting Device for Hand-Held Transmitters enables rotation of the mounted transmitter device to specified spherical coordinates. At the heads, the rotation axis is at the ear opening. Transmitter devices can be easily and accurately positioned according to IEC 62209-1, IEEE 1528, FCC, or other specifications. The device holder can be locked for positioning at different phantom sections (left head, right head, flat). And upgrade kit to Mounting Device to enable easy mounting of wider devices like big smart-phones, e-books, small tablets, etc. It holds devices with width up to 140 mm.



Mounting Device for Hand-Held Transmitters



Mounting Device Adaptor for Wide-Phones

<Mounting Device for Laptops and other Body-Worn Transmitters>

The extension is lightweight and made of POM, acrylic glass and foam. It fits easily on the upper part of the mounting device in place of the phone positioned. The extension is fully compatible with the SAM Twin and ELI phantoms.



Mounting Device for Laptops

7. Measurement Procedures

The measurement procedures are as follows:

<Conducted power measurement>

- (a) For WWAN power measurement, use base station simulator to configure EUT WWAN transmission in conducted connection with RF cable, at maximum power in each supported wireless interface and frequency band.
- (b) Read the WWAN RF power level from the base station simulator.
- (c) For WLAN/BT power measurement, use engineering software to configure EUT WLAN/BT continuously transmission, at maximum RF power in each supported wireless interface and frequency band
- (d) Connect EUT RF port through RF cable to the power meter, and measure WLAN/BT output power

<SAR measurement>

- (a) Use base station simulator to configure EUT WWAN transmission in radiated connection, and engineering software to configure EUT WLAN/BT continuously transmission, at maximum RF power, in the highest power channel.
- (b) Place the EUT in the positions as Appendix D demonstrates.
- (c) Set scan area, grid size and other setting on the DASY software.
- (d) Measure SAR results for the highest power channel on each testing position.
- (e) Find out the largest SAR result on these testing positions of each band
- (f) Measure SAR results for other channels in worst SAR testing position if the reported SAR of highest power channel is larger than 0.8 W/kg

According to the test standard, the recommended procedure for assessing the peak spatial-average SAR value consists of the following steps:

- (a) Power reference measurement
- (b) Area scan
- (c) Zoom scan
- (d) Power drift measurement

7.1 Spatial Peak SAR Evaluation

The procedure for spatial peak SAR evaluation has been implemented according to the test standard. It can be conducted for 1g and 10g, as well as for user-specific masses. The DASY software includes all numerical procedures necessary to evaluate the spatial peak SAR value.

The base for the evaluation is a "cube" measurement. The measured volume must include the 1g and 10g cubes with the highest averaged SAR values. For that purpose, the center of the measured volume is aligned to the interpolated peak SAR value of a previously performed area scan.

The entire evaluation of the spatial peak values is performed within the post-processing engine (SEMCAD). The system always gives the maximum values for the 1g and 10g cubes. The algorithm to find the cube with highest averaged SAR is divided into the following stages:

- (a) Extraction of the measured data (grid and values) from the Zoom Scan
- (b) Calculation of the SAR value at every measurement point based on all stored data (A/D values and measurement parameters)
- (c) Generation of a high-resolution mesh within the measured volume
- (d) Interpolation of all measured values from the measurement grid to the high-resolution grid
- (e) Extrapolation of the entire 3-D field distribution to the phantom surface over the distance from sensor to surface
- (f) Calculation of the averaged SAR within masses of 1g and 10g

7.2 Power Reference Measurement

The Power Reference Measurement and Power Drift Measurements are for monitoring the power drift of the device under test in the batch process. The minimum distance of probe sensors to surface determines the closest measurement point to phantom surface. This distance cannot be smaller than the distance of sensor calibration points to probe tip as defined in the probe properties.

7.3 Area Scan

The area scan is used as a fast scan in two dimensions to find the area of high field values, before doing a fine measurement around the hot spot. The sophisticated interpolation routines implemented in DASY software can find the maximum found in the scanned area, within a range of the global maximum. The range (in dB) is specified in the standards for compliance testing. For example, a 2 dB range is required in IEEE standard 1528 and IEC 62209 standards, whereby 3 dB is a requirement when compliance is assessed in accordance with the ARIB standard (Japan), if only one zoom scan follows the area scan, then only the absolute maximum will be taken as reference. For cases where multiple maximums are detected, the number of zoom scans has to be increased accordingly.

Area scan parameters extracted from FCC KDB 865664 D01v01r04 SAR measurement 100 MHz to 6 GHz.

	≤ 3 GHz	> 3 GHz
Maximum distance from closest measurement point (geometric center of probe sensors) to phantom surface	5 ± 1 mm	$\frac{1}{2} \cdot \delta \cdot \ln(2) \pm 0.5$ mm
Maximum probe angle from probe axis to phantom surface normal at the measurement location	30° ± 1°	20° ± 1°
Maximum area scan spatial resolution: $\Delta x_{Area}, \Delta y_{Area}$	≤ 2 GHz: ≤ 15 mm 2 – 3 GHz: ≤ 12 mm	3 – 4 GHz: ≤ 12 mm 4 – 6 GHz: ≤ 10 mm
	When the x or y dimension of the test device, in the measurement plane orientation, is smaller than the above, the measurement resolution must be ≤ the corresponding x or y dimension of the test device with at least one measurement point on the test device.	

7.4 Zoom Scan

Zoom scans are used assess the peak spatial SAR values within a cubic averaging volume containing 1 gram and 10 gram of simulated tissue. The zoom scan measures points (refer to table below) within a cube shoes base faces are centered on the maxima found in a preceding area scan job within the same procedure. When the measurement is done, the zoom scan evaluates the averaged SAR for 1 gram and 10 gram and displays these values next to the job's label.

Zoom scan parameters extracted from FCC KDB 865664 D01v01r04 SAR measurement 100 MHz to 6 GHz.

		≤ 3 GHz	> 3 GHz	
Maximum zoom scan spatial resolution: $\Delta x_{Zoom}, \Delta y_{Zoom}$		≤ 2 GHz: ≤ 8 mm 2 – 3 GHz: ≤ 5 mm*	3 – 4 GHz: ≤ 5 mm* 4 – 6 GHz: ≤ 4 mm*	
Maximum zoom scan spatial resolution, normal to phantom surface	uniform grid: $\Delta z_{Zoom}(n)$	≤ 5 mm	3 – 4 GHz: ≤ 4 mm 4 – 5 GHz: ≤ 3 mm 5 – 6 GHz: ≤ 2 mm	
	graded grid	$\Delta z_{Zoom}(1)$: between 1 st two points closest to phantom surface	≤ 4 mm	3 – 4 GHz: ≤ 3 mm 4 – 5 GHz: ≤ 2.5 mm 5 – 6 GHz: ≤ 2 mm
		$\Delta z_{Zoom}(n>1)$: between subsequent points	$\leq 1.5 \cdot \Delta z_{Zoom}(n-1)$	
Minimum zoom scan volume	x, y, z	≥ 30 mm	3 – 4 GHz: ≥ 28 mm 4 – 5 GHz: ≥ 25 mm 5 – 6 GHz: ≥ 22 mm	
Note: δ is the penetration depth of a plane-wave at normal incidence to the tissue medium; see draft standard IEEE P1528-2011 for details. * When zoom scan is required and the <i>reported</i> SAR from the <i>area scan based 1-g SAR estimation</i> procedures of KDB 447498 is ≤ 1.4 W/kg, ≤ 8 mm, ≤ 7 mm and ≤ 5 mm zoom scan resolution may be applied, respectively, for 2 GHz to 3 GHz, 3 GHz to 4 GHz and 4 GHz to 6 GHz.				

7.5 Volume Scan Procedures

The volume scan is used for assess overlapping SAR distributions for antennas transmitting in different frequency bands. It is equivalent to an oversized zoom scan used in standalone measurements. The measurement volume will be used to enclose all the simultaneous transmitting antennas. For antennas transmitting simultaneously in different frequency bands, the volume scan is measured separately in each frequency band. In order to sum correctly to compute the 1g aggregate SAR, the EUT remain in the same test position for all measurements and all volume scan use the same spatial resolution and grid spacing. When all volume scan were completed, the software, SEMCAD postprocessor can combine and subsequently superpose these measurement data to calculating the multiband SAR.

7.6 Power Drift Monitoring

All SAR testing is under the EUT install full charged battery and transmit maximum output power. In DASy measurement software, the power reference measurement and power drift measurement procedures are used for monitoring the power drift of EUT during SAR test. Both these procedures measure the field at a specified reference position before and after the SAR testing. The software will calculate the field difference in dB. If the power drifts more than 5%, the SAR will be retested.



8. Test Equipment List

General Note:

1. Prior to system verification and validation, the path loss from the signal generator to the system check source and the power meter, which includes the amplifier, cable, attenuator and directional coupler, was measured by the network analyzer. The reading of the power meter was offset by the path loss difference between the path to the power meter and the path to the system check source to monitor the actual power level fed to the system check source.
2. The dipole calibration interval can be extended to 3 years with justification according to KDB 865664 D01. The dipoles are also not physically damaged, or repaired during the interval. The justification data in appendix C can be found which the return loss is < -20dB, within 20% of prior calibration, the impedance is within 5 ohm of prior calibration for each dipole.

<Tonail WWAN Sku's WLAN>

Manufacturer	Name of Equipment	Type/Model	Serial Number	Calibration	
				Last Cal.	Due Date
SPEAG	2450MHz System Validation Kit ⁽²⁾	D2450V2	736	Aug. 31, 2018	Aug. 29, 2020
SPEAG	5GHz System Validation Kit ⁽²⁾	D5GHZV2	1006	Sep. 27, 2018	Sep. 25, 2020
SPEAG	Data Acquisition Electronics	DAE4	699	Feb. 26, 2020	Feb. 25, 2021
SPEAG	Data Acquisition Electronics	DAE4	1399	Feb. 18, 2020	Feb. 17, 2021
SPEAG	Dosimetric E-Field Probe	ES3DV3	3270	Sep. 25, 2019	Sep. 24, 2020
SPEAG	Dosimetric E-Field Probe	EX3DV4	3728	Feb. 04, 2020	Feb. 03, 2021
RCPTWN	Thermometer	HTC-1	TM685-1	Nov. 12, 2019	Nov. 11, 2020
RCPTWN	Thermometer	HTC-1	TM560-2	Nov. 12, 2019	Nov. 11, 2020
SPEAG	Device Holder	N/A	N/A	N/A	N/A
Anritsu	Signal Generator	MG3710A	6201502524	Nov. 20, 2019	Nov. 19, 2020
Agilent	ENA Network Analyzer	E5071C	MY46104758	Sep. 06, 2019	Sep. 05, 2020
SPEAG	Dielectric Probe Kit	DAK-3.5	1126	Sep. 18, 2019	Sep. 17, 2020
LINE SEIKI	Digital Thermometer	DTM3000-spezial	2942	Nov. 18, 2019	Nov. 17, 2020
Anritsu	Power Meter	ML2495A	932001	Oct. 03, 2019	Oct. 02, 2020
Anritsu	Power Sensor	MA2411B	846202	Oct. 03, 2019	Oct. 02, 2020
Anritsu	Power Meter	ML2495A	1218006	Oct. 14, 2019	Oct. 13, 2020
Anritsu	Power Sensor	MA2411B	1207363	Oct. 14, 2019	Oct. 13, 2020
Agilent	Spectrum Analyzer	E4408B	MY44211028	Aug. 27, 2019	Aug. 26, 2020
Anritsu	Spectrum Analyzer	N9010A	MY53470118	Mar. 12, 2020	Mar. 11, 2021
Mini-Circuits	Power Amplifier	ZVE-8G+	6418	Oct. 16, 2019	Oct. 15, 2020
Mini-Circuits	Power Amplifier	ZHL-42W+	715701915	May. 07, 2020	May. 06, 2021
ATM	Dual Directional Coupler	C122H-10	P610410z-02	Note 1	
Woken	Attenuator 1	WK0602-XX	N/A	Note 1	
PE	Attenuator 2	PE7005-10	N/A	Note 1	
PE	Attenuator 3	PE7005- 3	N/A	Note 1	



<Tonail WLAN>

Manufacturer	Name of Equipment	Type/Model	Serial Number	Calibration	
				Last Cal.	Due Date
SPEAG	2450MHz System Validation Kit ⁽²⁾	D2450V2	736	Aug. 31, 2018	Aug. 29, 2020
SPEAG	5GHz System Validation Kit ⁽²⁾	D5GHZV2	1006	Sep. 27, 2018	Sep. 25, 2020
SPEAG	Data Acquisition Electronics	DAE3	577	Sep. 17, 2019	Sep. 16, 2020
SPEAG	Data Acquisition Electronics	DAE4	699	Feb. 26, 2020	Feb. 25, 2021
SPEAG	Dosimetric E-Field Probe	EX3DV4	3728	Feb. 04, 2020	Feb. 03, 2021
SPEAG	Dosimetric E-Field Probe	EX3DV4	7590	Apr. 14, 2020	Apr. 13, 2021
RCPTWN	Thermometer	HTC-1	TM685-1	Nov. 12, 2019	Nov. 11, 2020
RCPTWN	Thermometer	HTC-1	TM560-2	Nov. 12, 2019	Nov. 11, 2020
SPEAG	Device Holder	N/A	N/A	N/A	N/A
Anritsu	Signal Generator	MG3710A	6201502524	Nov. 20, 2019	Nov. 19, 2020
Agilent	ENA Network Analyzer	E5071C	MY46104758	Sep. 06, 2019	Sep. 05, 2020
SPEAG	Dielectric Probe Kit	DAK-3.5	1126	Sep. 18, 2019	Sep. 17, 2020
LINE SEIKI	Digital Thermometer	DTM3000-spezial	2942	Nov. 18, 2019	Nov. 17, 2020
Anritsu	Power Meter	ML2495A	932001	Oct. 03, 2019	Oct. 02, 2020
Anritsu	Power Sensor	MA2411B	846202	Oct. 03, 2019	Oct. 02, 2020
Anritsu	Power Meter	ML2495A	1218006	Oct. 14, 2019	Oct. 13, 2020
Anritsu	Power Sensor	MA2411B	1207363	Oct. 14, 2019	Oct. 13, 2020
Agilent	Spectrum Analyzer	E4408B	MY44211028	Aug. 27, 2019	Aug. 26, 2020
Anritsu	Spectrum Analyzer	N9010A	MY53470118	Mar. 12, 2020	Mar. 11, 2021
Mini-Circuits	Power Amplifier	ZVE-8G+	6418	Oct. 16, 2019	Oct. 15, 2020
Mini-Circuits	Power Amplifier	ZHL-42W+	715701915	May. 07, 2020	May. 06, 2021
ATM	Dual Directional Coupler	C122H-10	P610410z-02	Note 1	
Woken	Attenuator 1	WK0602-XX	N/A	Note 1	
PE	Attenuator 2	PE7005-10	N/A	Note 1	
PE	Attenuator 3	PE7005- 3	N/A	Note 1	



<Pocket WLAN>

Manufacturer	Name of Equipment	Type/Model	Serial Number	Calibration	
				Last Cal.	Due Date
SPEAG	2450MHz System Validation Kit ⁽²⁾	D2450V2	736	Aug. 31, 2018	Aug. 29, 2020
SPEAG	5GHz System Validation Kit ⁽²⁾	D5GHzV2	1006	Sep. 27, 2018	Sep. 25, 2020
SPEAG	Data Acquisition Electronics	DAE3	577	Sep. 17, 2019	Sep. 16, 2020
SPEAG	Data Acquisition Electronics	DAE4	699	Feb. 26, 2020	Feb. 25, 2021
SPEAG	Dosimetric E-Field Probe	EX3DV4	3728	Feb. 04, 2020	Feb. 03, 2021
SPEAG	Dosimetric E-Field Probe	EX3DV4	7590	Apr. 14, 2020	Apr. 13, 2021
RCPTWN	Thermometer	HTC-1	TM685-1	Nov. 12, 2019	Nov. 11, 2020
RCPTWN	Thermometer	HTC-1	TM560-2	Nov. 12, 2019	Nov. 11, 2020
SPEAG	Device Holder	N/A	N/A	N/A	N/A
Anritsu	Signal Generator	MG3710A	6201502524	Nov. 20, 2019	Nov. 19, 2020
Agilent	ENA Network Analyzer	E5071C	MY46104758	Sep. 06, 2019	Sep. 05, 2020
SPEAG	Dielectric Probe Kit	DAK-3.5	1126	Sep. 18, 2019	Sep. 17, 2020
LINE SEIKI	Digital Thermometer	DTM3000-spezial	2942	Nov. 18, 2019	Nov. 17, 2020
Anritsu	Power Meter	ML2495A	932001	Oct. 03, 2019	Oct. 02, 2020
Anritsu	Power Sensor	MA2411B	846202	Oct. 03, 2019	Oct. 02, 2020
Anritsu	Power Meter	ML2495A	1218006	Oct. 14, 2019	Oct. 13, 2020
Anritsu	Power Sensor	MA2411B	1207363	Oct. 14, 2019	Oct. 13, 2020
Agilent	Spectrum Analyzer	E4408B	MY44211028	Aug. 27, 2019	Aug. 26, 2020
Anritsu	Spectrum Analyzer	N9010A	MY53470118	Mar. 12, 2020	Mar. 11, 2021
Mini-Circuits	Power Amplifier	ZVE-8G+	6418	Oct. 16, 2019	Oct. 15, 2020
Mini-Circuits	Power Amplifier	ZHL-42W+	715701915	May. 07, 2020	May. 06, 2021
ATM	Dual Directional Coupler	C122H-10	P610410z-02	Note 1	
Woken	Attenuator 1	WK0602-XX	N/A	Note 1	
PE	Attenuator 2	PE7005-10	N/A	Note 1	
PE	Attenuator 3	PE7005- 3	N/A	Note 1	

9. System Verification

9.1 Tissue Simulating Liquids

For the measurement of the field distribution inside the SAM phantom with DASY, the phantom must be filled with around 25 liters of homogeneous body tissue simulating liquid. For head SAR testing, the liquid height from the ear reference point (ERP) of the phantom to the liquid top surface is larger than 15 cm, which is shown in Fig. 10.1. For body SAR testing, the liquid height from the center of the flat phantom to the liquid top surface is larger than 15 cm, which is shown in Fig. 10.2.

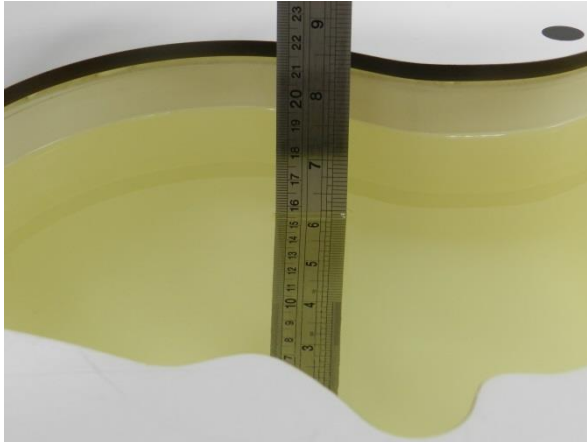


Fig 10.1 Photo of Liquid Height for Head SAR

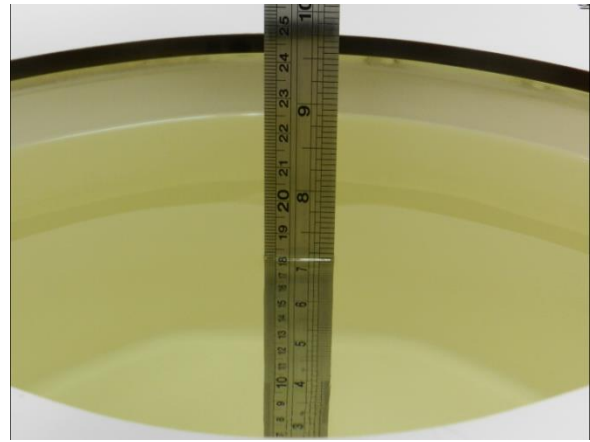


Fig 10.2 Photo of Liquid Height for Body SAR

9.2 Tissue Verification

The following tissue formulations are provided for reference only as some of the parameters have not been thoroughly verified. The composition of ingredients may be modified accordingly to achieve the desired target tissue parameters required for routine SAR evaluation.

Frequency (MHz)	Water (%)	Sugar (%)	Cellulose (%)	Salt (%)	Preventol (%)	DGBE (%)	Conductivity (σ)	Permittivity (ϵ_r)
750	41.1	57.0	0.2	1.4	0.2	0	0.89	41.9
835	40.3	57.9	0.2	1.4	0.2	0	0.90	41.5
900	40.3	57.9	0.2	1.4	0.2	0	0.97	41.5
1800, 1900, 2000	55.2	0	0	0.3	0	44.5	1.40	40.0
2450	55.0	0	0	0	0	45.0	1.80	39.2
2600	54.8	0	0	0.1	0	45.1	1.96	39.0

Simulating Liquid for 5GHz, Manufactured by SPEAG

Ingredients	(% by weight)
Water	64~78%
Mineral oil	11~18%
Emulsifiers	9~15%
Additives and Salt	2~3%

<Tissue Dielectric Parameter Check Results>

<Tonail WWAN Sku's WLAN>

Frequency (MHz)	Liquid Temp. (°C)	Conductivity (σ)	Permittivity (ϵ_r)	Conductivity Target (σ)	Permittivity Target (ϵ_r)	Delta (σ) (%)	Delta (ϵ_r) (%)	Limit (%)	Date
2450	22.3	1.787	40.253	1.80	39.20	-0.72	2.69	±5	2020/8/13
5250	22.2	4.666	37.130	4.71	35.95	-0.93	3.28	±5	2020/8/17
5600	22.2	5.023	36.591	5.07	35.50	-0.93	3.07	±5	2020/8/17
5750	22.2	5.176	36.456	5.22	35.35	-0.84	3.13	±5	2020/8/17

<Tonail WLAN>

Frequency (MHz)	Liquid Temp. (°C)	Conductivity (σ)	Permittivity (ϵ_r)	Conductivity Target (σ)	Permittivity Target (ϵ_r)	Delta (σ) (%)	Delta (ϵ_r) (%)	Limit (%)	Date
2450	22.3	1.787	40.253	1.80	39.20	-0.72	2.69	±5	2020/8/13
5250	22.3	4.644	36.443	4.71	35.95	-1.40	1.37	±5	2020/8/19
5600	22.3	5.005	35.961	5.07	35.50	-1.28	1.30	±5	2020/8/19
5750	22.3	5.156	35.685	5.22	35.35	-1.23	0.95	±5	2020/8/19



<Pocket WLAN>

Frequency (MHz)	Liquid Temp. (°C)	Conductivity (σ)	Permittivity (ε _r)	Conductivity Target (σ)	Permittivity Target (ε _r)	Delta (σ) (%)	Delta (ε _r) (%)	Limit (%)	Date
2450	22.3	1.787	40.253	1.80	39.20	-0.72	2.69	±5	2020/8/13
5250	22.3	4.644	36.443	4.71	35.95	-1.40	1.37	±5	2020/8/19
5250	22.8	4.631	36.319	4.71	35.95	-1.68	1.03	±5	2020/8/21
5600	22.3	5.005	35.961	5.07	35.50	-1.28	1.30	±5	2020/8/19
5600	22.8	4.991	35.837	5.07	35.50	-1.56	0.95	±5	2020/8/21
5750	22.3	5.156	35.685	5.22	35.35	-1.23	0.95	±5	2020/8/19
5750	22.8	5.142	35.562	5.22	35.35	-1.49	0.60	±5	2020/8/21



9.3 System Performance Check Results

Comparing to the original SAR value provided by SPEAG, the verification data should be within its specification of 10 %. Below table shows the target SAR and measured SAR after normalized to 1W input power. The table below indicates the system performance check can meet the variation criterion and the plots can be referred to Appendix A of this report.

<Tonail WWAN Sku's WLAN>

Table with 10 columns: Date, Frequency (MHz), Input Power (mW), Dipole S/N, Probe S/N, DAE S/N, Measured 1g SAR (W/kg), Targeted 1g SAR (W/kg), Normalized 1g SAR (W/kg), Deviation (%). Rows include data for dates 2020/8/13, 2020/8/17, 2020/8/17, 2020/8/17.

<Tonail WLAN>

Table with 10 columns: Date, Frequency (MHz), Input Power (mW), Dipole S/N, Probe S/N, DAE S/N, Measured 1g SAR (W/kg), Targeted 1g SAR (W/kg), Normalized 1g SAR (W/kg), Deviation (%). Rows include data for dates 2020/8/13, 2020/8/19, 2020/8/19, 2020/8/19.

<Pocket WLAN>

Table with 10 columns: Date, Frequency (MHz), Input Power (mW), Dipole S/N, Probe S/N, DAE S/N, Measured 1g SAR (W/kg), Targeted 1g SAR (W/kg), Normalized 1g SAR (W/kg), Deviation (%). Rows include data for dates 2020/8/13, 2020/8/19, 2020/8/21, 2020/8/19, 2020/8/21, 2020/8/19, 2020/8/21.

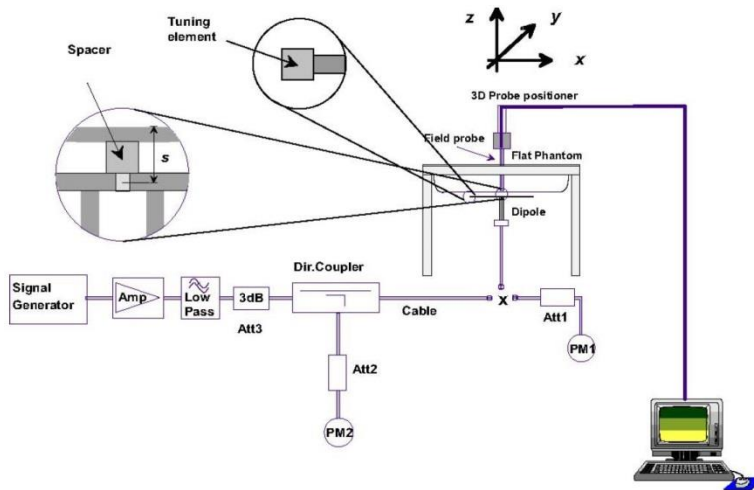


Fig 8.3.1 System Performance Check Setup



Fig 8.3.2 Setup Photo



10. WiFi/Bluetooth Output Power (Unit: dBm)

General Note:

1. For each antenna, transmit power in SISO operation is larger than (or equal to) the power in MIMO operation, RF exposure compliance of MIMO mode can be deduced from the compliance simultaneous transmission of antennas operating in SISO mode.
2. Per KDB 248227 D01v02r02, the simultaneous SAR provisions in KDB publication 447498 should be applied to determine simultaneous transmission SAR test exclusion for WiFi MIMO. If the sum of 1g single transmission chain SAR measurements is $< 1.6\text{W/kg}$ and SAR peak to location ratio ≤ 0.04 , no additional SAR measurements for MIMO.
3. Refer to tune-up procedure the channel 12 and 13 powers are low than others channel, measure power and SAR consideration is not necessary.
4. The maximum output power specified for production units are determined for all applicable 802.11 transmission modes in each standalone and aggregated frequency band. Maximum output power is measured for the highest maximum output power configuration(s) in each frequency band according to the default power measurement procedures. For "Not required", SAR Test reduction was applied from KDB 248227 guidance, Sec. 2.1, b), 1) when the same maximum power is specified for multiple transmission modes in a frequency band, the largest channel bandwidth, lowest order modulation, lowest data rate and lowest order 802.11a/g/n/ac mode is used for SAR measurement, on the highest measured output power channel in the initial test configuration, for each frequency band or when MIMO mode was not performed, due to for each antenna, transmit power in SISO operation is larger than (or equal to) the power in MIMO operation, RF exposure compliance of MIMO mode can be deduced from the compliance simultaneous transmission of antennas operating in SISO mode. Additional output power measurements were not necessary.
5. Per KDB 248227 D01v02r02, SAR test reduction is determined according to 802.11 transmission mode configurations and certain exposure conditions with multiple test positions. In the 2.4 GHz band, separate SAR procedures are applied to DSSS and OFDM configurations to simplify DSSS test requirements. For OFDM, in both 2.4 and 5 GHz bands, an initial test configuration must be determined for each standalone and aggregated frequency band, according to the transmission mode configuration with the highest maximum output power specified for production units to perform SAR measurements. If the same highest maximum output power applies to different combinations of channel bandwidths, modulations and data rates, additional procedures are applied to determine which test configurations require SAR measurement. When applicable, an initial test position may be applied to reduce the number of SAR measurements required for next to the ear, UMPC mini-tablet or hotspot mode configurations with multiple test positions.
6. For 2.4 GHz 802.11b DSSS, either the initial test position procedure for multiple exposure test positions or the DSSS procedure for fixed exposure position is applied; these are mutually exclusive. For 2.4 GHz and 5 GHz OFDM configurations, the initial test configuration is applied to measure SAR using either the initial test position procedure for multiple exposure test position configurations or the initial test configuration procedures for fixed exposure test conditions. Based on the reported SAR of the measured configurations and maximum output power of the transmission mode configurations that are not included in the initial test configuration, the subsequent test configuration and initial test position procedures are applied to determine if SAR measurements are required for the remaining OFDM transmission configurations. In general, the number of test channels that require SAR measurement is minimized based on maximum output power measured for the test sample(s).
7. For OFDM transmission configurations in the 2.4 GHz and 5 GHz bands, When the same maximum power is specified for multiple transmission modes in a frequency band, the largest channel bandwidth, lowest order modulation, lowest data rate and lowest order 802.11a/g/n/ac mode is used for SAR measurement, on the highest measured output power channel for each frequency band.
8. DSSS and OFDM configurations are considered separately according to the required SAR procedures. SAR is measured in the initial test position using the 802.11 transmission mode configuration required by the DSSS procedure or initial test configuration and subsequent test configuration(s) according to the OFDM procedures.18 The initial test position procedure is described in the following:
 - a. When the reported SAR of the initial test position is $\leq 0.4\text{ W/kg}$, further SAR measurement is not required for the other test positions in that exposure configuration and 802.11 transmission mode combinations within the frequency band or aggregated band.
 - b. When the reported SAR of the test position is $> 0.4\text{ W/kg}$, SAR is repeated for the 802.11 transmission mode configuration tested in the initial test position to measure the subsequent next closet/smallest test separation distance and maximum coupling test position on the highest maximum output power channel, until the report SAR is $\leq 0.8\text{ W/kg}$ or all required test position are tested.
 - c. For all positions/configurations, when the reported SAR is $> 0.8\text{ W/kg}$, SAR is measured for these test positions/configurations on the subsequent next highest measured output power channel(s) until the reported SAR is $\leq 1.2\text{ W/kg}$ or all required channels are tested.



<Tonail WWAN Sku's WLAN>

<2.4GHz WLAN ANT 1>

	Mode	Channel	Frequency (MHz)	Average power (dBm)	Tune-Up Limit	Duty Cycle %
2.4GHz WLAN	802.11b 1Mbps	1	2412	18.80	19.00	100
		6	2437	19.90	20.00	
		11	2462	18.80	19.00	
		12	2467	13.80	14.00	
		13	2472	12.90	13.00	
	802.11g 6Mbps	1	2412	Not Required	14.00	Not Required
		6	2437		20.00	
		11	2462		14.00	
		12	2467		11.00	
		13	2472		8.00	
	802.11n-HT20 MCS0	1	2412		14.00	
		6	2437		20.00	
		11	2462		14.00	
		12	2467		11.00	
		13	2472		8.00	
	802.11n-HT40 MCS0	3	2422		14.00	
		6	2437		17.00	
		9	2452		14.00	
		10	2457		11.00	
		11	2462		8.00	
	802.11ac-VHT20 MCS0	1	2412	14.00		
		6	2437	20.00		
		11	2462	14.00		
		12	2467	11.00		
		13	2472	8.00		
	802.11ac-VHT40 MCS0	3	2422	14.00		
		6	2437	17.00		
		9	2452	14.00		
10		2457	11.00			
11		2462	8.00			



<2.4GHz WLAN ANT 2>

	Mode	Channel	Frequency (MHz)	Average power (dBm)	Tune-Up Limit	Duty Cycle %
2.4GHz WLAN	802.11b 1Mbps	1	2412	18.80	19.00	100
		6	2437	19.80	20.00	
		11	2462	18.90	19.00	
		12	2467	13.80	14.00	
		13	2472	12.90	13.00	
	802.11g 6Mbps	1	2412	Not Required	14.00	Not Required
		6	2437		20.00	
		11	2462		14.00	
		12	2467		11.00	
		13	2472		8.00	
	802.11n-HT20 MCS0	1	2412		14.00	
		6	2437		20.00	
		11	2462		14.00	
		12	2467		11.00	
		13	2472		8.00	
	802.11n-HT40 MCS0	3	2422		14.00	
		6	2437		17.00	
		9	2452		14.00	
		10	2457		11.00	
		11	2462		8.00	
	802.11ac-VHT20 MCS0	1	2412	14.00		
		6	2437	20.00		
		11	2462	14.00		
		12	2467	11.00		
		13	2472	8.00		
	802.11ac-VHT40 MCS0	3	2422	14.00		
		6	2437	17.00		
		9	2452	14.00		
10		2457	11.00			
11		2462	8.00			



<2.4GHz WLAN ANT 1+2>

	Mode	Channel	Frequency (MHz)	Average power (dBm)	Tune-Up Limit	Duty Cycle %
2.4GHz WLAN	802.11b 1Mbps	1	2412	Not Required	17.00	Not Required
		6	2437		20.00	
		11	2462		17.00	
		12	2467		14.00	
		13	2472		11.00	
	802.11g 6Mbps	1	2412		17.00	
		6	2437		20.00	
		11	2462		17.00	
		12	2467		14.00	
		13	2472		11.00	
	802.11n-HT20 MCS0	1	2412		17.00	
		6	2437		20.00	
		11	2462		17.00	
		12	2467		14.00	
		13	2472		11.00	
	802.11n-HT40 MCS0	3	2422		16.00	
		6	2437		20.00	
		9	2452		17.00	
		10	2457		14.00	
		11	2462		10.50	
802.11ac-VHT20 MCS0	1	2412	17.00			
	6	2437	20.00			
	11	2462	17.00			
	12	2467	14.00			
	13	2472	11.00			
802.11ac-VHT40 MCS0	3	2422	16.00			
	6	2437	20.00			
	9	2452	17.00			
	10	2457	14.00			
	11	2462	10.50			



<5GHz WLAN ANT1>

	Mode	Channel	Frequency (MHz)	Average power (dBm)	Tune-Up Limit	Duty Cycle %
5.2GHz WLAN	802.11a 6Mbps	36	5180	Not Required	18.00	Not Required
		40	5200		18.00	
		44	5220		18.00	
		48	5240		18.00	
	802.11n-HT20 MCS0	36	5180		18.00	
		40	5200		18.00	
		44	5220		18.00	
		48	5240		18.00	
	802.11n-HT40 MCS0	38	5190	17.80	18.00	100
		46	5230	17.80	18.00	
	802.11ac-VHT20 MCS0	36	5180	Not Required	18.00	Not Required
		40	5200		18.00	
		44	5220		18.00	
		48	5240		18.00	
802.11ac-VHT40 MCS0	38	5190	18.00			
	46	5230	18.00			
802.11ac-VHT80 MCS0	42	5210	17.50			

	Mode	Channel	Frequency (MHz)	Average power (dBm)	Tune-Up Limit	Duty Cycle %
5.3GHz WLAN	802.11a 6Mbps	52	5260	17.90	18.00	100
		56	5280	17.60	18.00	
		60	5300	17.70	18.00	
		64	5320	17.60	18.00	
	802.11n-HT20 MCS0	52	5260	Not Required	18.00	Not Required
		56	5280		18.00	
		60	5300		18.00	
		64	5320		18.00	
	802.11n-HT40 MCS0	54	5270	17.90	18.00	100
		62	5310	17.30	17.50	
	802.11ac-VHT20 MCS0	52	5260	Not Required	18.00	Not Required
		56	5280		18.00	
		60	5300		18.00	
		64	5320		18.00	
802.11ac-VHT40 MCS0	54	5270	18.00			
	62	5310	17.50			
802.11ac-VHT80 MCS0	58	5290	17.00			



	Mode	Channel	Frequency (MHz)	Average power (dBm)	Tune-Up Limit	Duty Cycle %		
5.5GHz WLAN	802.11a 6Mbps	100	5500	Not Required	18.00	Not Required		
		116	5580		18.00			
		124	5620		18.00			
		132	5660		18.00			
		144	5720		18.00			
	802.11n-HT20 MCS0	100	5500		18.00			
		116	5580		18.00			
		124	5620		18.00			
		132	5660		18.00			
		144	5720		18.00			
	802.11n-HT40 MCS0	102	5510		16.00			
		110	5550		18.00			
		126	5630		18.00			
		134	5670		18.00			
		142	5710		18.00			
	802.11ac-VHT20 MCS0	100	5500		18.00			
		116	5580		18.00			
		124	5620		18.00			
		132	5660		18.00			
		144	5720		18.00			
	802.11ac-VHT40 MCS0	102	5510		16.00			
		110	5550		18.00			
		126	5630		18.00			
		134	5670		18.00			
		142	5710		18.00			
	802.11ac-VHT80 MCS0	106	5530		15.70		16.00	100
		122	5610		17.90		18.00	
138		5690	17.70	18.00				



	Mode	Channel	Frequency (MHz)	Average power (dBm)	Tune-Up Limit	Duty Cycle %	
5.8GHz WLAN	802.11a 6Mbps	149	5745	Not Required	18.00	Not Required	
		157	5785		18.00		
		165	5825		18.00		
	802.11n-HT20 MCS0	149	5745		18.00		
		157	5785		18.00		
		165	5825		18.00		
	802.11n-HT40 MCS0	151	5755	17.80	18.00	100	
		159	5795	17.80	18.00		
	802.11ac-VHT20 MCS0	802.11ac-VHT20 MCS0	149	5745	Not Required	18.00	Not Required
			157	5785		18.00	
			165	5825		18.00	
		802.11ac-VHT40 MCS0	151	5755		18.00	
159	5795		18.00				
802.11ac-VHT80 MCS0	155	5775	17.80	18.00		100	

<5GHz WLAN ANT2>

	Mode	Channel	Frequency (MHz)	Average power (dBm)	Tune-Up Limit	Duty Cycle %	
5.2GHz WLAN	802.11a 6Mbps	36	5180	Not Required	18.00	Not Required	
		40	5200		18.00		
		44	5220		18.00		
		48	5240		18.00		
	802.11n-HT20 MCS0	36	5180		18.00		
		40	5200		18.00		
		44	5220		18.00		
		48	5240		18.00		
	802.11n-HT40 MCS0	38	5190	17.60	18.00	100	
		46	5230	17.80	18.00		
	802.11ac-VHT20 MCS0	802.11ac-VHT20 MCS0	36	5180	Not Required	18.00	Not Required
			40	5200		18.00	
			44	5220		18.00	
			48	5240		18.00	
	802.11ac-VHT40 MCS0	38	5190	18.00			
		46	5230	18.00			
802.11ac-VHT80 MCS0	42	5210	17.50	18.00		100	



	Mode	Channel	Frequency (MHz)	Average power (dBm)	Tune-Up Limit	Duty Cycle %
5.3GHz WLAN	802.11a 6Mbps	52	5260	Not Required	18.00	Not Required
		56	5280		18.00	
		60	5300		18.00	
		64	5320		18.00	
	802.11n-HT20 MCS0	52	5260		18.00	
		56	5280		18.00	
		60	5300		18.00	
		64	5320		18.00	
	802.11n-HT40 MCS0	54	5270	17.80	18.00	100
		62	5310	17.20	17.50	
	802.11ac-VHT20 MCS0	52	5260	Not Required	18.00	Not Required
		56	5280		18.00	
		60	5300		18.00	
		64	5320		18.00	
802.11ac-VHT40 MCS0	54	5270	18.00			
	62	5310	17.50			
802.11ac-VHT80 MCS0	58	5290	17.00			



	Mode	Channel	Frequency (MHz)	Average power (dBm)	Tune-Up Limit	Duty Cycle %
5.5GHz WLAN	802.11a 6Mbps	100	5500	Not Required	18.00	Not Required
		116	5580		18.00	
		124	5620		18.00	
		132	5660		18.00	
		144	5720		18.00	
	802.11n-HT20 MCS0	100	5500		18.00	
		116	5580		18.00	
		124	5620		18.00	
		132	5660		18.00	
		144	5720		18.00	
	802.11n-HT40 MCS0	102	5510		16.00	
		110	5550		18.00	
		126	5630		18.00	
		134	5670		18.00	
		142	5710		18.00	
	802.11ac-VHT20 MCS0	100	5500		18.00	
		116	5580		18.00	
		124	5620		18.00	
		132	5660		18.00	
		144	5720		18.00	
	802.11ac-VHT40 MCS0	102	5510		16.00	
		110	5550		18.00	
		126	5630		18.00	
		134	5670		18.00	
142		5710	18.00			
802.11ac-VHT80 MCS0	106	5530	15.80	16.00	100	
	122	5610	17.90	18.00		
	138	5690	17.90	18.00		

	Mode	Channel	Frequency (MHz)	Average power (dBm)	Tune-Up Limit	Duty Cycle %
5.8GHz WLAN	802.11a 6Mbps	149	5745	Not Required	18.00	Not Required
		157	5785		18.00	
		165	5825		18.00	
	802.11n-HT20 MCS0	149	5745		18.00	
		157	5785		18.00	
		165	5825		18.00	
	802.11n-HT40 MCS0	151	5755	17.80	18.00	100
		159	5795	17.90	18.00	
	802.11ac-VHT20 MCS0	149	5745	Not Required	18.00	Not Required
		157	5785		18.00	
		165	5825		18.00	
	802.11ac-VHT40 MCS0	151	5755		18.00	
		159	5795		18.00	
	802.11ac-VHT80 MCS0	155	5775		17.70	



<5GHz WLAN ANT1+2>

	Mode	Channel	Frequency (MHz)	Average power (dBm)	Tune-Up Limit	Duty Cycle %
5.2GHz WLAN	802.11a 6Mbps	36	5180	Not Required	18.00	Not Required
		40	5200		18.00	
		44	5220		18.00	
		48	5240		18.00	
	802.11n-HT20 MCS0	36	5180		18.00	
		40	5200		18.00	
		44	5220		18.00	
		48	5240		18.00	
	802.11n-HT40 MCS0	38	5190		18.00	
		46	5230		18.00	
	802.11ac-VHT20 MCS0	36	5180		18.00	
		40	5200		18.00	
		44	5220		18.00	
		48	5240		18.00	
	802.11ac-VHT40 MCS0	38	5190		18.00	
		46	5230		18.00	
802.11ac-VHT80 MCS0	42	5210	18.00			

	Mode	Channel	Frequency (MHz)	Average power (dBm)	Tune-Up Limit	Duty Cycle %
5.3GHz WLAN	802.11a 6Mbps	52	5260	Not Required	18.00	Not Required
		56	5280		18.00	
		60	5300		18.00	
		64	5320		18.00	
	802.11n-HT20 MCS0	52	5260		18.00	
		56	5280		18.00	
		60	5300		18.00	
		64	5320		18.00	
	802.11n-HT40 MCS0	54	5270		18.00	
		62	5310		18.00	
	802.11ac-VHT20 MCS0	52	5260		18.00	
		56	5280		18.00	
		60	5300		18.00	
		64	5320		18.00	
	802.11ac-VHT40 MCS0	54	5270		18.00	
		62	5310		18.00	
802.11ac-VHT80 MCS0	58	5290	17.50			



	Mode	Channel	Frequency (MHz)	Average power (dBm)	Tune-Up Limit	Duty Cycle %
5.5GHz WLAN	802.11a 6Mbps	100	5500	Not Required	18.00	Not Required
		116	5580		18.00	
		124	5620		18.00	
		132	5660		18.00	
		144	5720		18.00	
	802.11n-HT20 MCS0	100	5500		18.00	
		116	5580		18.00	
		124	5620		18.00	
		132	5660		18.00	
		144	5720		18.00	
	802.11n-HT40 MCS0	102	5510		18.00	
		110	5550		18.00	
		126	5630		18.00	
		134	5670		18.00	
		142	5710		18.00	
	802.11ac-VHT20 MCS0	100	5500		18.00	
		116	5580		18.00	
		124	5620		18.00	
		132	5660		18.00	
		144	5720		18.00	
	802.11ac-VHT40 MCS0	102	5510		18.00	
		110	5550		18.00	
		126	5630		18.00	
		134	5670		18.00	
142		5710	18.00			
802.11ac-VHT80 MCS0	106	5530	17.00			
	122	5610	18.00			
	138	5690	18.00			

	Mode	Channel	Frequency (MHz)	Average power (dBm)	Tune-Up Limit	Duty Cycle %
5.8GHz WLAN	802.11a 6Mbps	149	5745	Not Required	18.00	Not Required
		157	5785		18.00	
		165	5825		18.00	
	802.11n-HT20 MCS0	149	5745		18.00	
		157	5785		18.00	
		165	5825		18.00	
	802.11n-HT40 MCS0	151	5755		18.00	
		159	5795		18.00	
		165	5825		18.00	
	802.11ac-VHT20 MCS0	149	5745		18.00	
		157	5785		18.00	
		165	5825		18.00	
	802.11ac-VHT40 MCS0	151	5755		18.00	
		159	5795		18.00	
	802.11ac-VHT80 MCS0	155	5775		18.00	



<Tonail WLAN>

<2.4GHz WLAN ANT 1>

	Mode	Channel	Frequency (MHz)	Average power (dBm)	Tune-Up Limit	Duty Cycle %
2.4GHz WLAN	802.11b 1Mbps	1	2412	18.90	19.00	100
		6	2437	19.90	20.00	
		11	2462	18.90	19.00	
		12	2467	13.80	14.00	
		13	2472	12.80	13.00	
	802.11g 6Mbps	1	2412	Not Required	14.00	Not Required
		6	2437		20.00	
		11	2462		14.00	
		12	2467		11.00	
		13	2472		8.00	
	802.11n-HT20 MCS0	1	2412		14.00	
		6	2437		20.00	
		11	2462		14.00	
		12	2467		11.00	
		13	2472		8.00	
	802.11n-HT40 MCS0	3	2422		14.00	
		6	2437		17.00	
		9	2452		14.00	
		10	2457		11.00	
		11	2462		8.00	
	802.11ac-VHT20 MCS0	1	2412		14.00	
		6	2437		20.00	
		11	2462		14.00	
		12	2467		11.00	
		13	2472		8.00	
	802.11ac-VHT40 MCS0	3	2422		14.00	
		6	2437		17.00	
		9	2452		14.00	
10		2457	11.00			
11		2462	8.00			



<2.4GHz WLAN ANT 2>

	Mode	Channel	Frequency (MHz)	Average power (dBm)	Tune-Up Limit	Duty Cycle %
2.4GHz WLAN	802.11b 1Mbps	1	2412	18.90	19.00	100
		6	2437	19.80	20.00	
		11	2462	18.80	19.00	
		12	2467	13.90	14.00	
		13	2472	12.80	13.00	
	802.11g 6Mbps	1	2412	Not Required	14.00	Not Required
		6	2437		20.00	
		11	2462		14.00	
		12	2467		11.00	
		13	2472		8.00	
	802.11n-HT20 MCS0	1	2412		14.00	
		6	2437		20.00	
		11	2462		14.00	
		12	2467		11.00	
		13	2472		8.00	
	802.11n-HT40 MCS0	3	2422	14.00		
		6	2437	17.00		
		9	2452	14.00		
		10	2457	11.00		
		11	2462	8.00		
802.11ac-VHT20 MCS0	1	2412	14.00			
	6	2437	20.00			
	11	2462	14.00			
	12	2467	11.00			
	13	2472	8.00			
802.11ac-VHT40 MCS0	3	2422	14.00			
	6	2437	17.00			
	9	2452	14.00			
	10	2457	11.00			
	11	2462	8.00			



<2.4GHz WLAN ANT 1+2>

	Mode	Channel	Frequency (MHz)	Average power (dBm)	Tune-Up Limit	Duty Cycle %
2.4GHz WLAN	802.11b 1Mbps	1	2412	Not Required	17.00	Not Required
		6	2437		23.00	
		11	2462		17.00	
		12	2467		14.00	
		13	2472		11.00	
	802.11g 6Mbps	1	2412		17.00	
		6	2437		23.00	
		11	2462		17.00	
		12	2467		14.00	
		13	2472		11.00	
	802.11n-HT20 MCS0	1	2412		17.00	
		6	2437		23.00	
		11	2462		17.00	
		12	2467		14.00	
		13	2472		11.00	
	802.11n-HT40 MCS0	3	2422		16.00	
		6	2437		20.00	
		9	2452		17.00	
		10	2457		14.00	
		11	2462		10.50	
802.11ac-VHT20 MCS0	1	2412	17.00			
	6	2437	23.00			
	11	2462	17.00			
	12	2467	14.00			
	13	2472	11.00			
802.11ac-VHT40 MCS0	3	2422	16.00			
	6	2437	20.00			
	9	2452	17.00			
	10	2457	14.00			
	11	2462	10.50			



<5GHz WLAN ANT1>

	Mode	Channel	Frequency (MHz)	Average power (dBm)	Tune-Up Limit	Duty Cycle %
5.2GHz WLAN	802.11a 6Mbps	36	5180	19.40	19.50	100
		40	5200	20.40	20.50	
		44	5220	20.40	20.50	
		48	5240	20.30	20.50	
	802.11n-HT20 MCS0	36	5180	Not Required	19.50	Not Required
		40	5200		20.50	
		44	5220		20.50	
		48	5240		20.50	
	802.11n-HT40 MCS0	38	5190		18.00	
		46	5230		19.50	
	802.11ac-VHT20 MCS0	36	5180		19.50	
		40	5200		20.50	
		44	5220		20.50	
		48	5240		20.50	
	802.11ac-VHT40 MCS0	38	5190		18.00	
		46	5230		19.50	
802.11ac-VHT80 MCS0	42	5210	17.50			

	Mode	Channel	Frequency (MHz)	Average power (dBm)	Tune-Up Limit	Duty Cycle %
5.3GHz WLAN	802.11a 6Mbps	52	5260	20.40	20.50	100
		56	5280	20.40	20.50	
		60	5300	20.40	20.50	
		64	5320	19.90	20.00	
	802.11n-HT20 MCS0	52	5260	Not Required	20.50	Not Required
		56	5280		20.50	
		60	5300		20.50	
		64	5320		20.00	
	802.11n-HT40 MCS0	54	5270		19.50	
		62	5310		17.50	
	802.11ac-VHT20 MCS0	52	5260		20.50	
		56	5280		20.50	
		60	5300		20.50	
		64	5320		20.00	
	802.11ac-VHT40 MCS0	54	5270		19.50	
		62	5310		17.50	
802.11ac-VHT80 MCS0	58	5290	17.00			



	Mode	Channel	Frequency (MHz)	Average power (dBm)	Tune-Up Limit	Duty Cycle %
5.5GHz WLAN	802.11a 6Mbps	100	5500	18.80	19.00	100
		116	5580	20.40	20.50	
		124	5620	20.30	20.50	
		132	5660	20.30	20.50	
		144	5720	20.30	20.50	
	802.11n-HT20 MCS0	100	5500	Not Required	19.00	Not Required
		116	5580		20.50	
		124	5620		20.50	
		132	5660		20.50	
		144	5720		20.50	
	802.11n-HT40 MCS0	102	5510		16.00	
		110	5550		19.50	
		126	5630		19.50	
		134	5670		19.50	
		142	5710		19.50	
	802.11ac-VHT20 MCS0	100	5500	19.00		
		116	5580	20.50		
		124	5620	20.50		
		132	5660	20.50		
		144	5720	20.50		
	802.11ac-VHT40 MCS0	102	5510	16.00		
		110	5550	19.50		
		126	5630	19.50		
		134	5670	19.50		
		142	5710	19.50		
	802.11ac-VHT80 MCS0	106	5530	16.00		
		122	5610	19.50		
		138	5690	19.50		



	Mode	Channel	Frequency (MHz)	Average power (dBm)	Tune-Up Limit	Duty Cycle %
5.8GHz WLAN	802.11a 6Mbps	149	5745	20.30	20.50	100
		157	5785	20.30	20.50	
		165	5825	20.40	20.50	
	802.11n-HT20 MCS0	149	5745	Not Required	20.50	Not Required
		157	5785		20.50	
		165	5825		20.50	
	802.11n-HT40 MCS0	151	5755		19.50	
		159	5795		19.50	
	802.11ac-VHT20 MCS0	149	5745		20.50	
		157	5785		20.50	
		165	5825		20.50	
	802.11ac-VHT40 MCS0	151	5755		19.50	
		159	5795		19.50	
	802.11ac-VHT80 MCS0	155	5775		19.50	



<5GHz WLAN ANT2>

	Mode	Channel	Frequency (MHz)	Average power (dBm)	Tune-Up Limit	Duty Cycle %
5.2GHz WLAN	802.11a 6Mbps	36	5180	19.40	19.50	100
		40	5200	20.40	20.50	
		44	5220	20.40	20.50	
		48	5240	20.40	20.50	
	802.11n-HT20 MCS0	36	5180	Not Required	19.50	Not Required
		40	5200		20.50	
		44	5220		20.50	
		48	5240		20.50	
	802.11n-HT40 MCS0	38	5190		18.00	
		46	5230		19.50	
	802.11ac-VHT20 MCS0	36	5180		19.50	
		40	5200		20.50	
		44	5220		20.50	
		48	5240		20.50	
	802.11ac-VHT40 MCS0	38	5190		18.00	
		46	5230		19.50	
802.11ac-VHT80 MCS0	42	5210	17.50			

	Mode	Channel	Frequency (MHz)	Average power (dBm)	Tune-Up Limit	Duty Cycle %
5.3GHz WLAN	802.11a 6Mbps	52	5260	20.30	20.50	100
		56	5280	20.40	20.50	
		60	5300	20.40	20.50	
		64	5320	19.90	20.00	
	802.11n-HT20 MCS0	52	5260	Not Required	20.50	Not Required
		56	5280		20.50	
		60	5300		20.50	
		64	5320		20.00	
	802.11n-HT40 MCS0	54	5270		19.50	
		62	5310		17.50	
	802.11ac-VHT20 MCS0	52	5260		20.50	
		56	5280		20.50	
		60	5300		20.50	
		64	5320		20.00	
	802.11ac-VHT40 MCS0	54	5270		19.50	
		62	5310		17.50	
802.11ac-VHT80 MCS0	58	5290	17.00			



	Mode	Channel	Frequency (MHz)	Average power (dBm)	Tune-Up Limit	Duty Cycle %
5.5GHz WLAN	802.11a 6Mbps	100	5500	18.80	19.00	100
		116	5580	20.30	20.50	
		124	5620	20.40	20.50	
		132	5660	20.30	20.50	
		144	5720	20.40	20.50	
	802.11n-HT20 MCS0	100	5500	Not Required	19.00	Not Required
		116	5580		20.50	
		124	5620		20.50	
		132	5660		20.50	
		144	5720		20.50	
	802.11n-HT40 MCS0	102	5510		16.00	
		110	5550		19.50	
		126	5630		19.50	
		134	5670		19.50	
		142	5710		19.50	
	802.11ac-VHT20 MCS0	100	5500		19.00	
		116	5580		20.50	
		124	5620		20.50	
		132	5660		20.50	
		144	5720		20.50	
	802.11ac-VHT40 MCS0	102	5510		16.00	
		110	5550		19.50	
		126	5630		19.50	
		134	5670		19.50	
142		5710	19.50			
802.11ac-VHT80 MCS0	106	5530	16.00			
	122	5610	19.50			
	138	5690	19.50			



	Mode	Channel	Frequency (MHz)	Average power (dBm)	Tune-Up Limit	Duty Cycle %
5.8GHz WLAN	802.11a 6Mbps	149	5745	20.40	20.50	100
		157	5785	20.30	20.50	
		165	5825	20.30	20.50	
	802.11n-HT20 MCS0	149	5745	Not Required	20.50	Not Required
		157	5785		20.50	
		165	5825		20.50	
	802.11n-HT40 MCS0	151	5755		19.50	
		159	5795		19.50	
	802.11ac-VHT20 MCS0	149	5745		20.50	
		157	5785		20.50	
		165	5825		20.50	
	802.11ac-VHT40 MCS0	151	5755		19.50	
		159	5795		19.50	
	802.11ac-VHT80 MCS0	155	5775		19.50	



<5GHz WLAN ANT1+2>

	Mode	Channel	Frequency (MHz)	Average power (dBm)	Tune-Up Limit	Duty Cycle %
5.2GHz WLAN	802.11a 6Mbps	36	5180	Not Required	21.50	Not Required
		40	5200		21.50	
		44	5220		21.50	
		48	5240		21.50	
	802.11n-HT20 MCS0	36	5180		21.50	
		40	5200		21.50	
		44	5220		21.50	
		48	5240		21.50	
	802.11n-HT40 MCS0	38	5190		19.50	
		46	5230		21.50	
	802.11ac-VHT20 MCS0	36	5180		21.50	
		40	5200		21.50	
		44	5220		21.50	
		48	5240		21.50	
	802.11ac-VHT40 MCS0	38	5190		19.50	
		46	5230		21.50	
802.11ac-VHT80 MCS0	42	5210	18.00			

	Mode	Channel	Frequency (MHz)	Average power (dBm)	Tune-Up Limit	Duty Cycle %
5.3GHz WLAN	802.11a 6Mbps	52	5260	Not Required	21.50	Not Required
		56	5280		21.50	
		60	5300		21.00	
		64	5320		21.50	
	802.11n-HT20 MCS0	52	5260		21.50	
		56	5280		21.50	
		60	5300		21.00	
		64	5320		21.50	
	802.11n-HT40 MCS0	54	5270		21.50	
		62	5310		19.00	
	802.11ac-VHT20 MCS0	52	5260		21.50	
		56	5280		21.50	
		60	5300		21.00	
		64	5320		21.50	
	802.11ac-VHT40 MCS0	54	5270		21.50	
		62	5310		19.00	
802.11ac-VHT80 MCS0	58	5290	17.50			



	Mode	Channel	Frequency (MHz)	Average power (dBm)	Tune-Up Limit	Duty Cycle %
5.5GHz WLAN	802.11a 6Mbps	100	5500	Not Required	19.50	Not Required
		116	5580		21.50	
		124	5620		21.50	
		132	5660		21.50	
		144	5720		21.50	
	802.11n-HT20 MCS0	100	5500		19.50	
		116	5580		21.50	
		124	5620		21.50	
		132	5660		21.50	
		144	5720		21.50	
	802.11n-HT40 MCS0	102	5510		18.00	
		110	5550		21.50	
		126	5630		21.50	
		134	5670		21.50	
		142	5710		21.50	
	802.11ac-VHT20 MCS0	100	5500		19.50	
		116	5580		21.50	
		124	5620		21.50	
		132	5660		21.50	
		144	5720		21.50	
	802.11ac-VHT40 MCS0	102	5510		18.00	
		110	5550		21.50	
		126	5630		21.50	
		134	5670		21.50	
142		5710	21.50			
802.11ac-VHT80 MCS0	106	5530	17.00			
	122	5610	21.00			
	138	5690	21.50			



	Mode	Channel	Frequency (MHz)	Average power (dBm)	Tune-Up Limit	Duty Cycle %
5.8GHz WLAN	802.11a 6Mbps	149	5745	Not Required	23.50	Not Required
		157	5785		23.50	
		165	5825		23.50	
	802.11n-HT20 MCS0	149	5745		23.50	
		157	5785		23.50	
		165	5825		23.50	
	802.11n-HT40 MCS0	151	5755		22.50	
		159	5795		22.50	
	802.11ac-VHT20 MCS0	149	5745		23.50	
		157	5785		23.50	
		165	5825		23.50	
	802.11ac-VHT40 MCS0	151	5755		22.50	
		159	5795		22.50	
	802.11ac-VHT80 MCS0	155	5775		20.00	



<Pocket WLAN>

<2.4GHz WLAN ANT 1>

	Mode	Channel	Frequency (MHz)	Average power (dBm)	Tune-Up Limit	Duty Cycle %
2.4GHz WLAN	802.11b 1Mbps	1	2412	18.80	19.00	100
		6	2437	19.90	20.00	
		11	2462	18.80	19.00	
		12	2467	13.90	14.00	
		13	2472	12.90	13.00	
	802.11g 6Mbps	1	2412	Not Required	14.00	Not Required
		6	2437		20.00	
		11	2462		14.00	
		12	2467		11.00	
		13	2472		8.00	
	802.11n-HT20 MCS0	1	2412		14.00	
		6	2437		20.00	
		11	2462		14.00	
		12	2467		11.00	
		13	2472		8.00	
	802.11n-HT40 MCS0	3	2422		14.00	
		6	2437		17.00	
		9	2452		14.00	
		10	2457		11.00	
		11	2462		8.00	
802.11ac-VHT20 MCS0	1	2412	14.00			
	6	2437	20.00			
	11	2462	14.00			
	12	2467	11.00			
	13	2472	8.00			
802.11ac-VHT40 MCS0	3	2422	14.00			
	6	2437	17.00			
	9	2452	14.00			
	10	2457	11.00			
	11	2462	8.00			



<2.4GHz WLAN ANT 2>

	Mode	Channel	Frequency (MHz)	Average power (dBm)	Tune-Up Limit	Duty Cycle %
2.4GHz WLAN	802.11b 1Mbps	1	2412	18.90	19.00	100
		6	2437	19.80	20.00	
		11	2462	18.90	19.00	
		12	2467	13.90	14.00	
		13	2472	12.70	13.00	
	802.11g 6Mbps	1	2412	Not Required	14.00	Not Required
		6	2437		20.00	
		11	2462		14.00	
		12	2467		11.00	
		13	2472		8.00	
	802.11n-HT20 MCS0	1	2412		14.00	
		6	2437		20.00	
		11	2462		14.00	
		12	2467		11.00	
		13	2472		8.00	
	802.11n-HT40 MCS0	3	2422		14.00	
		6	2437		17.00	
		9	2452		14.00	
		10	2457		11.00	
		11	2462		8.00	
	802.11ac-VHT20 MCS0	1	2412		14.00	
		6	2437		20.00	
		11	2462		14.00	
		12	2467		11.00	
		13	2472		8.00	
	802.11ac-VHT40 MCS0	3	2422		14.00	
		6	2437		17.00	
		9	2452		14.00	
10		2457	11.00			
11		2462	8.00			



<2.4GHz WLAN ANT 1+2>

	Mode	Channel	Frequency (MHz)	Average power (dBm)	Tune-Up Limit	Duty Cycle %
2.4GHz WLAN	802.11b 1Mbps	1	2412	Not Required	17.00	Not Required
		6	2437		23.00	
		11	2462		17.00	
		12	2467		14.00	
		13	2472		11.00	
	802.11g 6Mbps	1	2412		17.00	
		6	2437		23.00	
		11	2462		17.00	
		12	2467		14.00	
		13	2472		11.00	
	802.11n-HT20 MCS0	1	2412		17.00	
		6	2437		23.00	
		11	2462		17.00	
		12	2467		14.00	
		13	2472		11.00	
	802.11n-HT40 MCS0	3	2422		16.00	
		6	2437		20.00	
		9	2452		17.00	
		10	2457		14.00	
		11	2462		10.50	
	802.11ac-VHT20 MCS0	1	2412		17.00	
		6	2437		23.00	
		11	2462		17.00	
		12	2467		14.00	
		13	2472		11.00	
802.11ac-VHT40 MCS0	3	2422	16.00			
	6	2437	20.00			
	9	2452	17.00			
	10	2457	14.00			
	11	2462	10.50			



<5GHz WLAN ANT 1>

	Mode	Channel	Frequency (MHz)	Average power (dBm)	Tune-Up Limit	Duty Cycle %
5.2GHz WLAN	802.11a 6Mbps	36	5180	Not Required	19.50	Not Required
		40	5200		20.50	
		44	5220		20.50	
		48	5240		20.50	
	802.11n-HT20 MCS0	36	5180		19.50	
		40	5200		20.50	
		44	5220		20.50	
		48	5240		20.50	
	802.11n-HT40 MCS0	38	5190		18.00	
		46	5230		19.50	
	802.11ac-VHT20 MCS0	36	5180		19.50	
		40	5200		20.50	
		44	5220		20.50	
		48	5240		20.50	
	802.11ac-VHT40 MCS0	38	5190		18.00	
		46	5230		19.50	
802.11ac-VHT80 MCS0	42	5210	17.50			

	Mode	Channel	Frequency (MHz)	Average power (dBm)	Tune-Up Limit	Duty Cycle %
5.3GHz WLAN	802.11a 6Mbps	52	5260	20.40	20.50	100
		56	5280	20.30	20.50	
		60	5300	20.40	20.50	
		64	5320	19.90	20.00	
	802.11n-HT20 MCS0	52	5260	Not Required	20.50	Not Required
		56	5280		20.50	
		60	5300		20.50	
		64	5320		20.00	
	802.11n-HT40 MCS0	54	5270		19.50	
		62	5310		17.50	
	802.11ac-VHT20 MCS0	52	5260		20.50	
		56	5280		20.50	
		60	5300		20.50	
		64	5320		20.00	
	802.11ac-VHT40 MCS0	54	5270		19.50	
		62	5310		17.50	
802.11ac-VHT80 MCS0	58	5290	17.00			



	Mode	Channel	Frequency (MHz)	Average power (dBm)	Tune-Up Limit	Duty Cycle %
5.5GHz WLAN	802.11a 6Mbps	100	5500	18.80	19.00	100
		116	5580	20.30	20.50	
		124	5620	20.40	20.50	
		132	5660	20.20	20.50	
		144	5720	20.30	20.50	
	802.11n-HT20 MCS0	100	5500	Not Required	19.00	Not Required
		116	5580		20.50	
		124	5620		20.50	
		132	5660		20.50	
		144	5720		20.50	
	802.11n-HT40 MCS0	102	5510		16.00	
		110	5550		19.50	
		126	5630		19.50	
		134	5670		19.50	
		142	5710		19.50	
	802.11ac-VHT20 MCS0	100	5500		19.00	
		116	5580		20.50	
		124	5620		20.50	
		132	5660		20.50	
		144	5720		20.50	
	802.11ac-VHT40 MCS0	102	5510		16.00	
		110	5550		19.50	
		126	5630		19.50	
		134	5670		19.50	
142		5710	19.50			
802.11ac-VHT80 MCS0	106	5530	16.00			
	122	5610	19.50			
	138	5690	19.50			

	Mode	Channel	Frequency (MHz)	Average power (dBm)	Tune-Up Limit	Duty Cycle %
5.8GHz WLAN	802.11a 6Mbps	149	5745	20.30	20.50	100
		157	5785	20.40	20.50	
		165	5825	20.40	20.50	
	802.11n-HT20 MCS0	149	5745	Not Required	20.50	Not Required
		157	5785		20.50	
		165	5825		20.50	
	802.11n-HT40 MCS0	151	5755		19.50	
		159	5795		19.50	
	802.11ac-VHT20 MCS0	149	5745		20.50	
		157	5785		20.50	
		165	5825		20.50	
	802.11ac-VHT40 MCS0	151	5755		19.50	
		159	5795		19.50	
	802.11ac-VHT80 MCS0	155	5775		19.50	



<5GHz WLAN ANT 2>

5.2GHz WLAN	Mode	Channel	Frequency (MHz)	Average power (dBm)	Tune-Up Limit	Duty Cycle %
	802.11a 6Mbps	36	5180	Not Required	19.50	Not Required
		40	5200		20.50	
		44	5220		20.50	
		48	5240		20.50	
	802.11n-HT20 MCS0	36	5180		19.50	
		40	5200		20.50	
		44	5220		20.50	
		48	5240		20.50	
	802.11n-HT40 MCS0	38	5190		18.00	
46		5230	19.50			
802.11ac-VHT20 MCS0	36	5180	19.50			
	40	5200	20.50			
	44	5220	20.50			
	48	5240	20.50			
802.11ac-VHT40 MCS0	38	5190	18.00			
	46	5230	19.50			
802.11ac-VHT80 MCS0	42	5210	17.50			

5.3GHz WLAN	Mode	Channel	Frequency (MHz)	Average power (dBm)	Tune-Up Limit	Duty Cycle %
	802.11a 6Mbps	52	5260	20.40	20.50	100
		56	5280	20.40	20.50	
		60	5300	20.30	20.50	
		64	5320	19.80	20.00	
	802.11n-HT20 MCS0	52	5260	Not Required	20.50	Not Required
		56	5280		20.50	
		60	5300		20.50	
		64	5320		20.00	
	802.11n-HT40 MCS0	54	5270		19.50	
62		5310	17.50			
802.11ac-VHT20 MCS0	52	5260	20.50			
	56	5280	20.50			
	60	5300	20.50			
	64	5320	20.00			
802.11ac-VHT40 MCS0	54	5270	19.50			
	62	5310	17.50			
802.11ac-VHT80 MCS0	58	5290	17.00			



	Mode	Channel	Frequency (MHz)	Average power (dBm)	Tune-Up Limit	Duty Cycle %
5.5GHz WLAN	802.11a 6Mbps	100	5500	18.70	19.00	100
		116	5580	20.40	20.50	
		124	5620	20.30	20.50	
		132	5660	20.30	20.50	
		144	5720	20.40	20.50	
	802.11n-HT20 MCS0	100	5500	Not Required	19.00	Not Required
		116	5580		20.50	
		124	5620		20.50	
		132	5660		20.50	
		144	5720		20.50	
	802.11n-HT40 MCS0	102	5510		16.00	
		110	5550		19.50	
		126	5630		19.50	
		134	5670		19.50	
		142	5710		19.50	
	802.11ac-VHT20 MCS0	100	5500		19.00	
		116	5580		20.50	
		124	5620		20.50	
		132	5660		20.50	
		144	5720		20.50	
	802.11ac-VHT40 MCS0	102	5510		16.00	
		110	5550		19.50	
		126	5630		19.50	
		134	5670		19.50	
142		5710	19.50			
802.11ac-VHT80 MCS0	106	5530	16.00			
	122	5610	19.50			
	138	5690	19.50			

	Mode	Channel	Frequency (MHz)	Average power (dBm)	Tune-Up Limit	Duty Cycle %
5.8GHz WLAN	802.11a 6Mbps	149	5745	20.40	20.50	100
		157	5785	20.40	20.50	
		165	5825	20.40	20.50	
	802.11n-HT20 MCS0	149	5745	Not Required	20.50	Not Required
		157	5785		20.50	
		165	5825		20.50	
	802.11n-HT40 MCS0	151	5755		19.50	
		159	5795		19.50	
	802.11ac-VHT20 MCS0	149	5745		20.50	
		157	5785		20.50	
		165	5825		20.50	
	802.11ac-VHT40 MCS0	151	5755		19.50	
		159	5795		19.50	
802.11ac-VHT80 MCS0	155	5775	19.50			



<5GHz WLAN ANT 1+2>

	Mode	Channel	Frequency (MHz)	Average power (dBm)	Tune-Up Limit	Duty Cycle %
5.2GHz WLAN	802.11a 6Mbps	36	5180	Not Required	21.50	Not Required
		40	5200		21.50	
		44	5220		21.50	
		48	5240		21.50	
	802.11n-HT20 MCS0	36	5180		21.50	
		40	5200		21.50	
		44	5220		21.50	
		48	5240		21.50	
	802.11n-HT40 MCS0	38	5190		19.50	
		46	5230		21.50	
	802.11ac-VHT20 MCS0	36	5180		21.50	
		40	5200		21.50	
		44	5220		21.50	
		48	5240		21.50	
	802.11ac-VHT40 MCS0	38	5190		19.50	
		46	5230		21.50	
802.11ac-VHT80 MCS0	42	5210	18.00			

	Mode	Channel	Frequency (MHz)	Average power (dBm)	Tune-Up Limit	Duty Cycle %
5.3GHz WLAN	802.11a 6Mbps	52	5260	Not Required	21.50	Not Required
		56	5280		21.50	
		60	5300		21.00	
		64	5320		21.50	
	802.11n-HT20 MCS0	52	5260		21.50	
		56	5280		21.50	
		60	5300		21.00	
		64	5320		21.50	
	802.11n-HT40 MCS0	54	5270		21.50	
		62	5310		19.00	
	802.11ac-VHT20 MCS0	52	5260		21.50	
		56	5280		21.50	
		60	5300		21.00	
		64	5320		21.50	
	802.11ac-VHT40 MCS0	54	5270		21.50	
		62	5310		19.00	
802.11ac-VHT80 MCS0	58	5290	17.50			



	Mode	Channel	Frequency (MHz)	Average power (dBm)	Tune-Up Limit	Duty Cycle %
5.5GHz WLAN	802.11a 6Mbps	100	5500	Not Required	19.50	Not Required
		116	5580		21.50	
		124	5620		21.50	
		132	5660		21.50	
		144	5720		21.50	
	802.11n-HT20 MCS0	100	5500		19.50	
		116	5580		21.50	
		124	5620		21.50	
		132	5660		21.50	
		144	5720		21.50	
	802.11n-HT40 MCS0	102	5510		18.00	
		110	5550		21.50	
		126	5630		21.50	
		134	5670		21.50	
		142	5710		21.50	
	802.11ac-VHT20 MCS0	100	5500		19.50	
		116	5580		21.50	
		124	5620		21.50	
		132	5660		21.50	
		144	5720		21.50	
	802.11ac-VHT40 MCS0	102	5510		18.00	
		110	5550		21.50	
		126	5630		21.50	
		134	5670		21.50	
142		5710	21.50			
802.11ac-VHT80 MCS0	106	5530	17.00			
	122	5610	21.00			
	138	5690	21.50			

	Mode	Channel	Frequency (MHz)	Average power (dBm)	Tune-Up Limit	Duty Cycle %
5.8GHz WLAN	802.11a 6Mbps	149	5745	Not Required	23.50	Not Required
		157	5785		23.50	
		165	5825		23.50	
	802.11n-HT20 MCS0	149	5745		23.50	
		157	5785		23.50	
		165	5825		23.50	
	802.11n-HT40 MCS0	151	5755		22.50	
		159	5795		22.50	
	802.11ac-VHT20 MCS0	149	5745		23.50	
		157	5785		23.50	
	802.11ac-VHT40 MCS0	165	5825		23.50	
		151	5755		22.50	
	802.11ac-VHT80 MCS0	159	5795		22.50	
		155	5775		20.00	



11. Bluetooth Exclusions Applied

<Tonail WWAN Sku's WLAN>

Mode Band	Max Average power(dBm)	
	BR/EDR	LE
2.4GHz Bluetooth	6	6

Note:

- Per KDB 447498 D01v06, the 1-g and 10-g SAR test exclusion thresholds for 100 MHz to 6 GHz at *test separation distances* ≤ 50 mm are determined by:

$$[(\text{max. power of channel, including tune-up tolerance, mW}) / (\text{min. test separation distance, mm})] \cdot [\sqrt{f(\text{GHz})}] \leq 3.0$$
 for 1-g SAR and ≤ 7.5 for 10-g extremity SAR
 - f(GHz) is the RF channel transmit frequency in GHz
 - Power and distance are rounded to the nearest mW and mm before calculation
 - The result is rounded to one decimal place for comparison

Bluetooth Max Power (dBm)	Separation Distance (mm)	Frequency (GHz)	exclusion thresholds
6	< 5	2.48	1.25

Note:

Per KDB 447498 D01v06, when the minimum test separation distance is < 5 mm, a distance of 5 mm is applied to determine SAR test exclusion. The test exclusion threshold is 1.25 which is ≤ 3, SAR testing is not required.

<Tonail WLAN>

Mode Band	Max Average power(dBm)	
	BR/EDR	LE
2.4GHz Bluetooth	6	6

Note:

- Per KDB 447498 D01v06, the 1-g and 10-g SAR test exclusion thresholds for 100 MHz to 6 GHz at *test separation distances* ≤ 50 mm are determined by:

$$[(\text{max. power of channel, including tune-up tolerance, mW}) / (\text{min. test separation distance, mm})] \cdot [\sqrt{f(\text{GHz})}] \leq 3.0$$
 for 1-g SAR and ≤ 7.5 for 10-g extremity SAR
 - f(GHz) is the RF channel transmit frequency in GHz
 - Power and distance are rounded to the nearest mW and mm before calculation
 - The result is rounded to one decimal place for comparison

Bluetooth Max Power (dBm)	Separation Distance (mm)	Frequency (GHz)	exclusion thresholds
6	197	2.48	0.03

Note:

Per KDB 447498 D01v06, when the minimum test separation distance is 197 mm, a distance of 5 mm is applied to determine SAR test exclusion. The test exclusion threshold is 0.03 which is ≤ 3, SAR testing is not required.



< Pocket WLAN >

Mode Band	Max Average power(dBm)	
	BR/EDR	LE
2.4GHz Bluetooth	6	6

Note:

- Per KDB 447498 D01v06, the 1-g and 10-g SAR test exclusion thresholds for 100 MHz to 6 GHz at *test separation distances* ≤ 50 mm are determined by:

$$[(max. power of channel, including tune-up tolerance, mW)/(min. test separation distance, mm)] \cdot [\sqrt{f(GHz)}] \leq 3.0$$
for 1-g SAR and ≤ 7.5 for 10-g extremity SAR
 - f(GHz) is the RF channel transmit frequency in GHz
 - Power and distance are rounded to the nearest mW and mm before calculation
 - The result is rounded to one decimal place for comparison

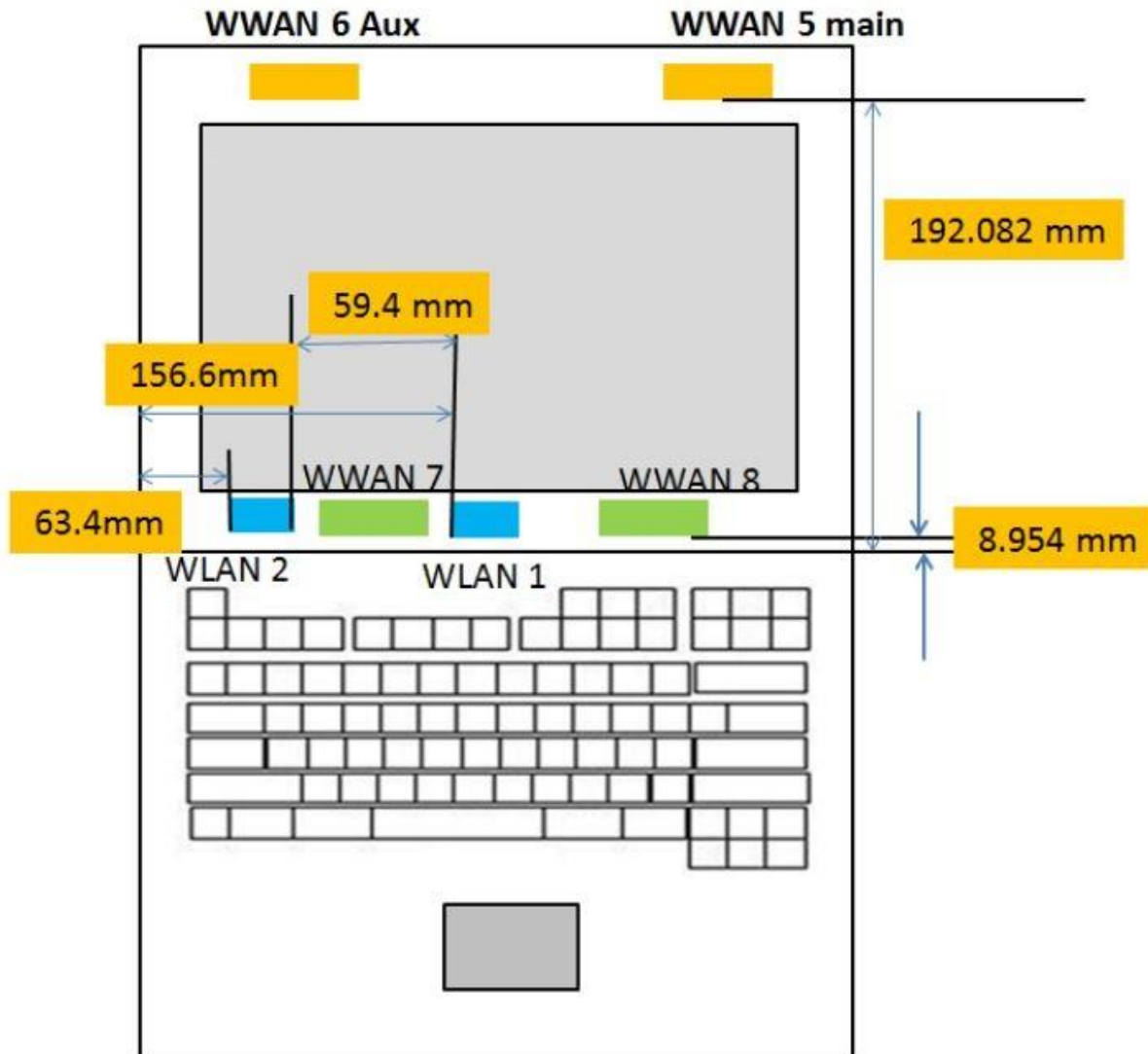
Bluetooth Max Power (dBm)	Separation Distance (mm)	Frequency (GHz)	exclusion thresholds
6	197	2.48	0.03

Note:

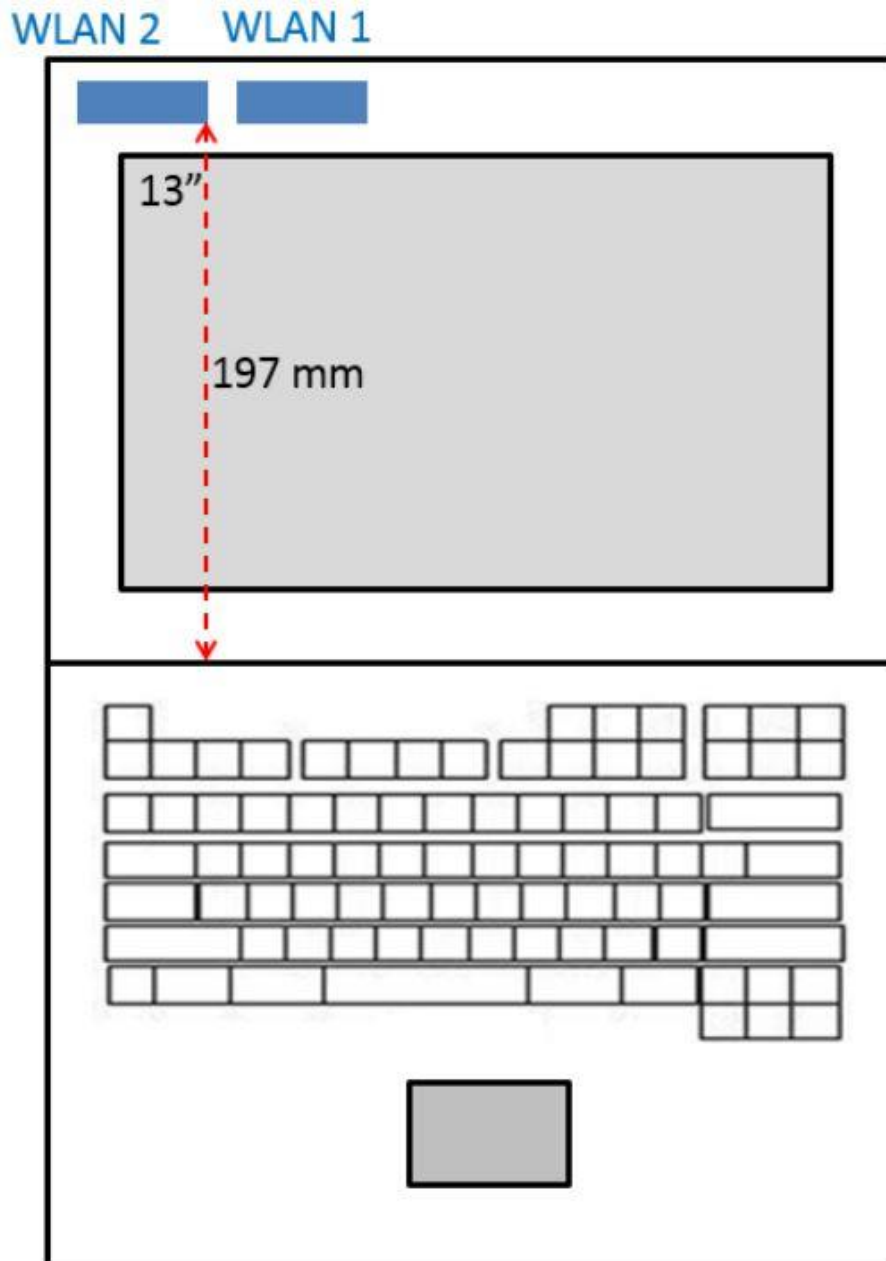
Per KDB 447498 D01v06, a distance of 197 mm is applied to determine SAR test exclusion. The test exclusion threshold is 0.03 which is ≤ 3, SAR testing is not required.

12. Antenna Location

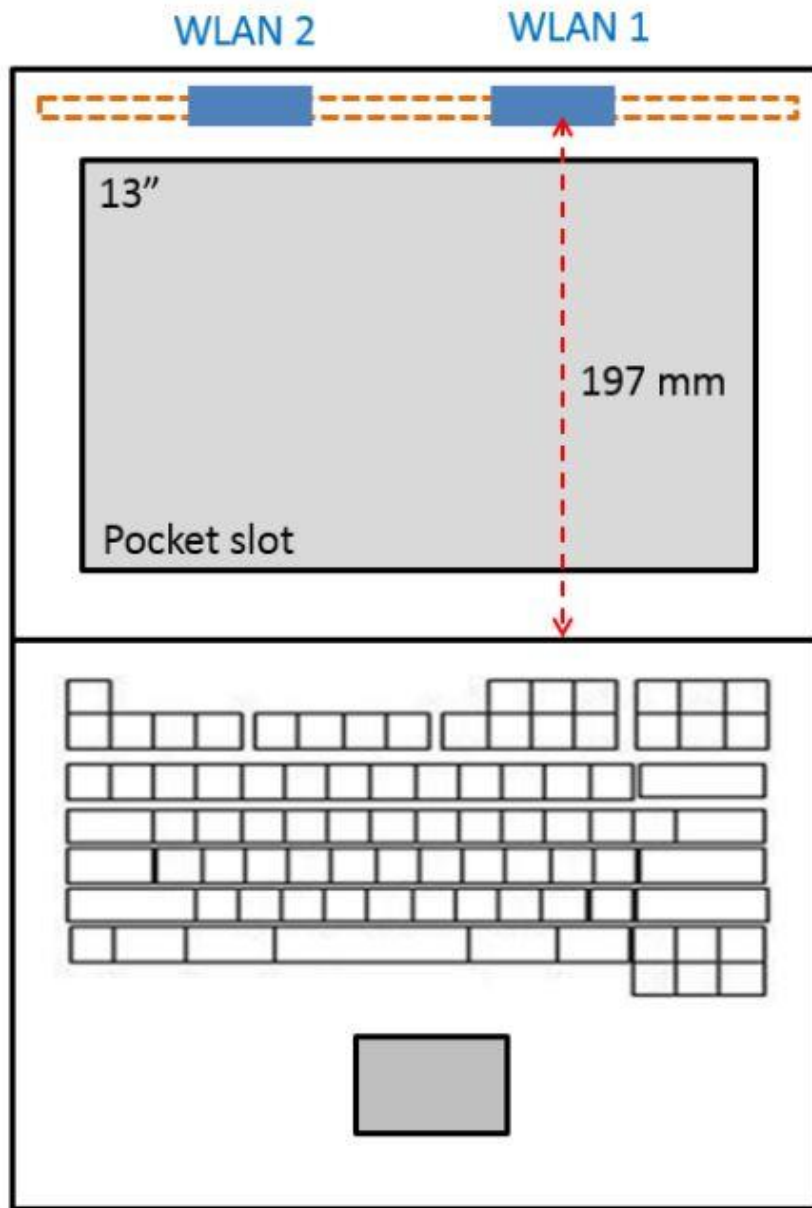
<Tonail WWAN Sku's WLAN>



<Tonail WLAN>



< Pocket WLAN >





13. SAR Test Results

General Note:

1. Per KDB 447498 D01v06, the reported SAR is the measured SAR value adjusted for maximum tune-up tolerance.
 - a. Tune-up scaling Factor = tune-up limit power (mW) / EUT RF power (mW), where tune-up limit is the maximum rated power among all production units.
 - b. For SAR testing of WLAN signal with non-100% duty cycle, the measured SAR is scaled-up by the duty cycle scaling factor which is equal to "1/(duty cycle)"
 - c. For WLAN: Reported SAR(W/kg)= Measured SAR(W/kg)* Duty Cycle scaling factor * Tune-up scaling factor
2. Per KDB 447498 D01v06, for each exposure position, testing of other required channels within the operating mode of a frequency band is not required when the *reported* 1-g or 10-g SAR for the mid-band or highest output power channel is:
 - ≤ 0.8 W/kg or 2.0 W/kg, for 1-g or 10-g respectively, when the transmission band is ≤ 100 MHz
 - ≤ 0.6 W/kg or 1.5 W/kg, for 1-g or 10-g respectively, when the transmission band is between 100 MHz and 200 MHz
 - ≤ 0.4 W/kg or 1.0 W/kg, for 1-g or 10-g respectively, when the transmission band is ≥ 200 MHz
3. Per KDB 865664 D01v01r04, for each frequency band, repeated SAR measurement is required only when the measured SAR is ≥ 0.8 W/kg.

WLAN Note:

1. Per KDB 248227 D01v02r02, for 2.4GHz 802.11g/n SAR testing is not required when the highest reported SAR for DSSS is adjusted by the ratio of OFDM to DSSS specified maximum output power and the adjusted SAR is ≤ 1.2 W/kg.
2. Per KDB 248227 D01v02r02, U-NII-1 SAR testing is not required when the U-NII-2A band highest reported SAR for a test configuration is ≤ 1.2 W/kg, SAR is not required for U-NII-1 band.
3. When the reported SAR of the test position is > 0.4 W/kg, SAR is repeated for the 802.11 transmission mode configuration tested in the initial test position to measure the subsequent next closet/smallest test separation distance and maximum coupling test position on the highest maximum output power channel, until the report SAR is ≤ 0.8 W/kg or all required test position are tested.
4. For all positions / configurations, when the reported SAR is > 0.8 W/kg, SAR is measured for these test positions / configurations on the subsequent next highest measured output power channel(s) until the reported SAR is ≤ 1.2 W/kg or all required channels are tested.
5. For WLAN SAR testing was performed on single antenna RF power in SISO mode is larger or equal to the single antenna RF power in MIMO mode, and for RF exposure assessment of MIMO mode simultaneous transmission exclusion analysis was performed with SAR test results of each antenna in SISO mode.
6. Per KDB 248227 D01v02r02, the simultaneous SAR provisions in KDB publication 447498 should be applied to determine simultaneous transmission SAR test exclusion for WiFi MIMO. If the sum of 1g single transmission chain SAR measurements is < 1.6 W/kg and SAR peak to location ratio ≤ 0.04 , no additional SAR measurements for MIMO.
7. During SAR testing the WLAN transmission was verified using a spectrum analyzer.



13.1 Body SAR for Tonail WWAN Sku's WLAN

<WLAN SAR>

Plot No.	Band	Mode	Test Position	Gap (mm)	Antenna	Ch.	Freq. (MHz)	Average Power (dBm)	Tune-Up Limit (dBm)	Tune-up Scaling Factor	Duty Cycle %	Duty Cycle Scaling Factor	Power Drift (dB)	Measured 1g SAR (W/kg)	Reported 1g SAR (W/kg)
	WLAN2.4GHz	802.11b 1Mbps	Bottom of Laptop	0mm	Ant 1	6	2437	19.90	20.00	1.023	100	1.000	0.02	0.374	0.383
	WLAN2.4GHz	802.11b 1Mbps	Bottom of Laptop	0mm	Ant 1	1	2412	18.80	19.00	1.047	100	1.000	0.06	0.322	0.337
	WLAN2.4GHz	802.11b 1Mbps	Bottom of Laptop	0mm	Ant 1	11	2462	18.80	19.00	1.047	100	1.000	0.07	0.328	0.343
01	WLAN2.4GHz	802.11b 1Mbps	Bottom of Laptop	0mm	Ant 2	6	2437	19.80	20.00	1.047	100	1.000	-0.09	0.749	0.784
	WLAN2.4GHz	802.11b 1Mbps	Bottom of Laptop	0mm	Ant 2	1	2412	18.80	19.00	1.047	100	1.000	0.06	0.630	0.660
	WLAN2.4GHz	802.11b 1Mbps	Bottom of Laptop	0mm	Ant 2	11	2462	18.90	19.00	1.023	100	1.000	-0.12	0.600	0.614
02	WLAN5GHz	802.11n-HT40 MCS0	Bottom of Laptop	0mm	Ant 1	54	5270	17.90	18.00	1.023	100	1.000	-0.07	0.965	0.987
	WLAN5GHz	802.11n-HT40 MCS0	Bottom of Laptop	0mm	Ant 1	62	5310	17.30	17.50	1.047	100	1.000	0.03	0.780	0.817
	WLAN5GHz	802.11a 6Mbps	Bottom of Laptop	0mm	Ant 1	52	5260	17.90	18.00	1.023	100	1.000	-0.05	0.933	0.955
	WLAN5GHz	802.11n-HT40 MCS0	Bottom of Laptop	0mm	Ant 2	54	5270	17.80	18.00	1.047	100	1.000	-0.05	0.659	0.690
	WLAN5GHz	802.11n-HT40 MCS0	Bottom of Laptop	0mm	Ant 2	62	5310	17.20	17.50	1.072	100	1.000	0.03	0.516	0.553
	WLAN5GHz	802.11ac-VHT80 MCS0	Bottom of Laptop	0mm	Ant 1	122	5610	17.90	18.00	1.023	100	1.000	-0.11	0.496	0.508
	WLAN5GHz	802.11ac-VHT80 MCS0	Bottom of Laptop	0mm	Ant 1	106	5530	15.70	16.00	1.072	100	1.000	0.05	0.447	0.479
	WLAN5GHz	802.11ac-VHT80 MCS0	Bottom of Laptop	0mm	Ant 1	138	5690	17.70	18.00	1.072	100	1.000	-0.07	0.391	0.419
	WLAN5GHz	802.11ac-VHT80 MCS0	Bottom of Laptop	0mm	Ant 2	122	5610	17.90	18.00	1.023	100	1.000	0.09	0.669	0.684
	WLAN5GHz	802.11ac-VHT80 MCS0	Bottom of Laptop	0mm	Ant 2	106	5530	15.80	16.00	1.047	100	1.000	0.03	0.673	0.704
03	WLAN5GHz	802.11ac-VHT80 MCS0	Bottom of Laptop	0mm	Ant 2	138	5690	17.90	18.00	1.023	100	1.000	-0.06	0.698	0.714
	WLAN5GHz	802.11ac-VHT80 MCS0	Bottom of Laptop	0mm	Ant 1	155	5775	17.80	18.00	1.047	100	1.000	-0.1	0.771	0.807
04	WLAN5GHz	802.11n-HT40 MCS0	Bottom of Laptop	0mm	Ant 1	159	5795	17.80	18.00	1.047	100	1.000	-0.1	1.070	1.120
	WLAN5GHz	802.11ac-VHT80 MCS0	Bottom of Laptop	0mm	Ant 2	155	5775	17.70	18.00	1.072	100	1.000	0.06	0.783	0.839
	WLAN5GHz	802.11n-HT40 MCS0	Bottom of Laptop	0mm	Ant 2	159	5795	17.90	18.00	1.023	100	1.000	0.01	0.983	1.006



13.2 Body SAR for Tonail WLAN

<WLAN SAR>

Plot No.	Band	Mode	Test Position	Gap (mm)	Antenna	Antenna Vendor	Ch.	Freq. (MHz)	Average Power (dBm)	Tune-Up Limit (dBm)	Tune-up Scaling Factor	Duty Cycle %	Duty Cycle Scaling Factor	Power Drift (dB)	Measured 1g SAR (W/kg)	Reported 1g SAR (W/kg)
	WLAN2.4GHz	802.11b 1Mbps	Bottom of Laptop	0mm	Ant 1	HB	6	2437	19.90	20.00	1.023	100	1.000	-0.08	0.004	0.004
	WLAN2.4GHz	802.11b 1Mbps	Bottom of Laptop	0mm	Ant 1	AWAN	6	2437	19.90	20.00	1.023	100	1.000	0.05	0.003	0.003
	WLAN2.4GHz	802.11b 1Mbps	Bottom of Laptop	0mm	Ant 1	INPAQ	6	2437	19.90	20.00	1.023	100	1.000	0.16	0.003	0.003
01	WLAN2.4GHz	802.11b 1Mbps	Bottom of Laptop	0mm	Ant 2	HB	6	2437	19.80	20.00	1.047	100	1.000	-0.1	0.016	0.017
	WLAN2.4GHz	802.11b 1Mbps	Bottom of Laptop	0mm	Ant 2	AWAN	6	2437	19.80	20.00	1.047	100	1.000	0.01	0.011	0.012
	WLAN2.4GHz	802.11b 1Mbps	Bottom of Laptop	0mm	Ant 2	INPAQ	6	2437	19.80	20.00	1.047	100	1.000	0.14	0.010	0.010
	WLAN5GHz	802.11a 6Mbps	Bottom of Laptop	0mm	Ant 1	HB	56	5280	20.40	20.50	1.023	100	1.000	0	< 0.001	< 0.001
	WLAN5GHz	802.11a 6Mbps	Bottom of Laptop	0mm	Ant 1	AWAN	56	5280	20.40	20.50	1.023	100	1.000	0	< 0.001	< 0.001
	WLAN5GHz	802.11a 6Mbps	Bottom of Laptop	0mm	Ant 1	INPAQ	56	5280	20.40	20.50	1.023	100	1.000	0	< 0.001	< 0.001
02	WLAN5GHz	802.11a 6Mbps	Bottom of Laptop	0mm	Ant 2	HB	56	5280	20.40	20.50	1.023	100	1.000	0	< 0.001	< 0.001
	WLAN5GHz	802.11a 6Mbps	Bottom of Laptop	0mm	Ant 2	AWAN	56	5280	20.40	20.50	1.023	100	1.000	0	< 0.001	< 0.001
	WLAN5GHz	802.11a 6Mbps	Bottom of Laptop	0mm	Ant 2	INPAQ	56	5280	20.40	20.50	1.023	100	1.000	0	< 0.001	< 0.001
	WLAN5GHz	802.11a 6Mbps	Bottom of Laptop	0mm	Ant 1	HB	116	5580	20.40	20.50	1.023	100	1.000	0	< 0.001	< 0.001
	WLAN5GHz	802.11a 6Mbps	Bottom of Laptop	0mm	Ant 1	AWAN	116	5580	20.40	20.50	1.023	100	1.000	0	< 0.001	< 0.001
	WLAN5GHz	802.11a 6Mbps	Bottom of Laptop	0mm	Ant 1	INPAQ	116	5580	20.40	20.50	1.023	100	1.000	0	< 0.001	< 0.001
03	WLAN5GHz	802.11a 6Mbps	Bottom of Laptop	0mm	Ant 2	HB	124	5620	20.40	20.50	1.023	100	1.000	0	< 0.001	< 0.001
	WLAN5GHz	802.11a 6Mbps	Bottom of Laptop	0mm	Ant 2	AWAN	124	5620	20.40	20.50	1.023	100	1.000	0	< 0.001	< 0.001
	WLAN5GHz	802.11a 6Mbps	Bottom of Laptop	0mm	Ant 2	INPAQ	124	5620	20.40	20.50	1.023	100	1.000	0	< 0.001	< 0.001
	WLAN5GHz	802.11a 6Mbps	Bottom of Laptop	0mm	Ant 1	HB	165	5825	20.40	20.50	1.023	100	1.000	0	< 0.001	< 0.001
	WLAN5GHz	802.11a 6Mbps	Bottom of Laptop	0mm	Ant 1	AWAN	165	5825	20.40	20.50	1.023	100	1.000	0	< 0.001	< 0.001
	WLAN5GHz	802.11a 6Mbps	Bottom of Laptop	0mm	Ant 1	INPAQ	165	5825	20.40	20.50	1.023	100	1.000	0	< 0.001	< 0.001
04	WLAN5GHz	802.11a 6Mbps	Bottom of Laptop	0mm	Ant 2	HB	149	5745	20.40	20.50	1.023	100	1.000	0	< 0.001	< 0.001
	WLAN5GHz	802.11a 6Mbps	Bottom of Laptop	0mm	Ant 2	AWAN	149	5745	20.40	20.50	1.023	100	1.000	0	< 0.001	< 0.001
	WLAN5GHz	802.11a 6Mbps	Bottom of Laptop	0mm	Ant 2	INPAQ	149	5745	20.40	20.50	1.023	100	1.000	0	< 0.001	< 0.001

13.3 Body SAR for Pocket WLAN

<WLAN SAR>

Plot No.	Band	Mode	Test Position	Gap (mm)	Antenna	Antenna Vendor	Ch.	Freq. (MHz)	Average Power (dBm)	Tune-Up Limit (dBm)	Tune-up Scaling Factor	Duty Cycle %	Duty Cycle Scaling Factor	Power Drift (dB)	Measured 1g SAR (W/kg)	Reported 1g SAR (W/kg)
	WLAN2.4GHz	802.11b 1Mbps	Bottom of Laptop	0mm	Ant 1	HB	6	2437	19.90	20.00	1.023	100	1.000	-0.06	0.002	0.002
	WLAN2.4GHz	802.11b 1Mbps	Bottom of Laptop	0mm	Ant 1	AWAN	6	2437	19.90	20.00	1.023	100	1.000	0	0.001	0.001
	WLAN2.4GHz	802.11b 1Mbps	Bottom of Laptop	0mm	Ant 1	INPAQ	6	2437	19.90	20.00	1.023	100	1.000	0	0.001	0.001
01	WLAN2.4GHz	802.11b 1Mbps	Bottom of Laptop	0mm	Ant 2	HB	6	2437	19.80	20.00	1.047	100	1.000	-0.17	0.028	0.029
	WLAN2.4GHz	802.11b 1Mbps	Bottom of Laptop	0mm	Ant 2	AWAN	6	2437	19.80	20.00	1.047	100	1.000	-0.01	0.025	0.026
	WLAN2.4GHz	802.11b 1Mbps	Bottom of Laptop	0mm	Ant 2	INPAQ	6	2437	19.80	20.00	1.047	100	1.000	-0.1	0.026	0.027
	WLAN5GHz	802.11a 6Mbps	Bottom of Laptop	0mm	Ant 1	HB	60	5300	20.40	20.50	1.023	100	1.000	0	< 0.001	< 0.001
	WLAN5GHz	802.11a 6Mbps	Bottom of Laptop	0mm	Ant 1	AWAN	60	5300	20.40	20.50	1.023	100	1.000	0	< 0.001	< 0.001
	WLAN5GHz	802.11a 6Mbps	Bottom of Laptop	0mm	Ant 1	INPAQ	60	5300	20.40	20.50	1.023	100	1.000	0	< 0.001	< 0.001
02	WLAN5GHz	802.11a 6Mbps	Bottom of Laptop	0mm	Ant 2	HB	56	5280	20.40	20.50	1.023	100	1.000	0	< 0.001	< 0.001
	WLAN5GHz	802.11a 6Mbps	Bottom of Laptop	0mm	Ant 2	AWAN	56	5280	20.40	20.50	1.023	100	1.000	0	< 0.001	< 0.001
	WLAN5GHz	802.11a 6Mbps	Bottom of Laptop	0mm	Ant 2	INPAQ	56	5280	20.40	20.50	1.023	100	1.000	0	< 0.001	< 0.001
	WLAN5GHz	802.11a 6Mbps	Bottom of Laptop	0mm	Ant 1	HB	124	5620	20.40	20.50	1.023	100	1.000	0	< 0.001	< 0.001
	WLAN5GHz	802.11a 6Mbps	Bottom of Laptop	0mm	Ant 1	AWAN	124	5620	20.40	20.50	1.023	100	1.000	0	< 0.001	< 0.001
	WLAN5GHz	802.11a 6Mbps	Bottom of Laptop	0mm	Ant 1	INPAQ	124	5620	20.40	20.50	1.023	100	1.000	0	< 0.001	< 0.001
03	WLAN5GHz	802.11a 6Mbps	Bottom of Laptop	0mm	Ant 2	HB	116	5580	20.40	20.50	1.023	100	1.000	0	< 0.001	< 0.001
	WLAN5GHz	802.11a 6Mbps	Bottom of Laptop	0mm	Ant 2	AWAN	116	5580	20.40	20.50	1.023	100	1.000	0	< 0.001	< 0.001
	WLAN5GHz	802.11a 6Mbps	Bottom of Laptop	0mm	Ant 2	INPAQ	116	5580	20.40	20.50	1.023	100	1.000	0	< 0.001	< 0.001
	WLAN5GHz	802.11a 6Mbps	Bottom of Laptop	0mm	Ant 1	HB	157	5785	20.40	20.50	1.023	100	1.000	0	< 0.001	< 0.001
	WLAN5GHz	802.11a 6Mbps	Bottom of Laptop	0mm	Ant 1	AWAN	157	5785	20.40	20.50	1.023	100	1.000	0	< 0.001	< 0.001
	WLAN5GHz	802.11a 6Mbps	Bottom of Laptop	0mm	Ant 1	INPAQ	157	5785	20.40	20.50	1.023	100	1.000	0	< 0.001	< 0.001
04	WLAN5GHz	802.11a 6Mbps	Bottom of Laptop	0mm	Ant 2	HB	157	5785	20.40	20.50	1.023	100	1.000	0	< 0.001	< 0.001
	WLAN5GHz	802.11a 6Mbps	Bottom of Laptop	0mm	Ant 2	AWAN	157	5785	20.40	20.50	1.023	100	1.000	0	< 0.001	< 0.001
	WLAN5GHz	802.11a 6Mbps	Bottom of Laptop	0mm	Ant 2	INPAQ	157	5785	20.40	20.50	1.023	100	1.000	0	< 0.001	< 0.001

13.4 Repeated SAR Measurement

General Note:

1. Per KDB 865664 D01v01r04, for each frequency band, repeated SAR measurement is required only when the measured SAR is $\geq 0.8W/kg$.
2. Per KDB 865664 D01v01r04, if the ratio among the repeated measurement is ≤ 1.2 and the measured SAR $< 1.45W/kg$, only one repeated measurement is required.
3. The ratio is the difference in percentage between original and repeated *measured* SAR.
4. All measurement SAR result is scaled-up to account for tune-up tolerance and is compliant.

No.	Band	Mode	Test Position	Gap (mm)	Antenna	Ch.	Freq. (MHz)	Average Power (dBm)	Tune-Up Limit (dBm)	Tune-up Scaling Factor	Duty Cycle %	Duty Cycle Scaling Factor	Power Drift (dB)	Measured 1g SAR (W/kg)	Ratio	Reported 1g SAR (W/kg)
1st	WLAN5GHz	802.11n-HT40 MCS0	Bottom of Laptop	0mm	Ant 1	54	5270	17.90	18.00	1.023	100	1.000	-0.07	0.965		0.987
2nd	WLAN5GHz	802.11n-HT40 MCS0	Bottom of Laptop	0mm	Ant 1	54	5270	17.90	18.00	1.023	100	1.000	-0.02	0.951	1.01	0.973
1st	WLAN5GHz	802.11n-HT40 MCS0	Bottom of Laptop	0mm	Ant 1	159	5795	17.80	18.00	1.047	100	1.000	-0.1	1.070		1.120
2nd	WLAN5GHz	802.11n-HT40 MCS0	Bottom of Laptop	0mm	Ant 1	159	5795	17.80	18.00	1.047	100	1.000	-0.13	1.010	1.06	1.058

14. Simultaneous Transmission Analysis for Tonail WWAN Sku's WLAN

NO.	Simultaneous Transmission Configurations	Body
1.	2.4GHz WLAN ANT 1 + 2.4GHz WLAN ANT 2	Yes
2.	5GHz WLAN ANT 1 + 5GHz WLAN ANT 2	Yes
3.	2.4GHz WLAN ANT 2+ Bluetooth ANT 1	Yes
4.	5GHz WLAN ANT 2 + Bluetooth ANT 1	Yes

General Note:

- For SAR testing was performed on single antenna RF power in SISO mode is larger or equal to the single antenna RF power in MIMO mode, and for RF exposure assessment of MIMO mode simultaneous transmission exclusion analysis was performed with SAR test results of each antenna in SISO mode.
- WLAN and Bluetooth share the same antenna 1, and cannot transmit simultaneously.
- EUT will choose either WLAN 2.4GHz or WLAN 5GHz according to the network signal condition; therefore, 2.4GHz WLAN and 5GHz WLAN will not operate simultaneously at any moment.
- The Scaled SAR summation is calculated based on the same configuration and test position.
- Per KDB 447498 D01v06, simultaneous transmission SAR is compliant if,
 - Scalar SAR summation < 1.6W/kg.
 - $SPLSR = (SAR1 + SAR2)^{1.5} / (\text{min. separation distance, mm})$, and the peak separation distance is determined from the square root of $[(x1-x2)^2 + (y1-y2)^2 + (z1-z2)^2]$, where (x1, y1, z1) and (x2, y2, z2) are the coordinates of the extrapolated peak SAR locations in the zoom scan.
 - If $SPLSR \leq 0.04$, simultaneously transmission SAR measurement is not necessary.
 - Simultaneously transmission SAR measurement, and the reported multi-band SAR < 1.6W/kg.
 - The SPLSR calculated results please refer to section 14.2.
- For simultaneous transmission analysis, Bluetooth SAR is estimated per KDB 447498 D01v06 based on the formula below.
 - $(\text{max. power of channel, including tune-up tolerance, mW}) / (\text{min. test separation distance, mm}) \cdot [\sqrt{f(\text{GHz})} / x] \text{ W/kg}$ for test separation distances $\leq 50 \text{ mm}$; where $x = 7.5$ for 1-g SAR, and $x = 18.75$ for 10-g SAR.
 - When the minimum separation distance is < 5mm, the distance is used 5mm to determine SAR test exclusion.
 - 0.4 W/kg for 1-g SAR and 1.0 W/kg for 10-g SAR, when the test separation distances is > 50 mm.

Bluetooth Max Power	Exposure Position	Bottom of Laptop
6 dBm	Estimated SAR (W/kg)	0.167 W/kg

14.1 Body Exposure Conditions

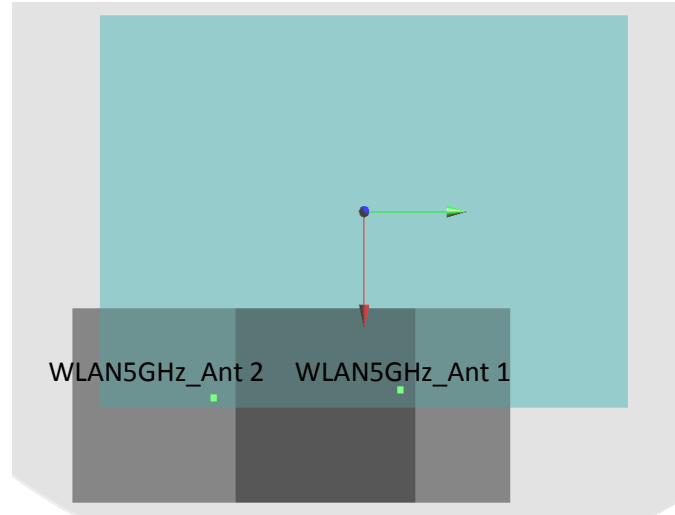
Exposure Position	1	2	3	4	5	1+2 Summed 1g SAR (W/kg)	3+4 Summed 1g SAR (W/kg)	2+5 Summed 1g SAR (W/kg)	4+5 Summed 1g SAR (W/kg)	SPLSR	Case No
	2.4GHz WLAN Ant 1	2.4GHz WLAN Ant 2	5GHz WLAN Ant 1	5GHz WLAN Ant 2	Bluetooth Ant 1						
Bottom of Laptop at 0mm	1g SAR (W/kg)	1g SAR (W/kg)	1g SAR (W/kg)	1g SAR (W/kg)	Estimated 1g SAR (W/kg)	1.167	2.126	0.951	1.173	0.03	Case 1

14.2 SPLSR Evaluation and Analysis

General Note:

- SPLSR = $(SAR_1 + SAR_2)^{1.5} / (min. \text{ separation distance, mm})$. If $SPLSR \leq 0.04$, simultaneously transmission SAR measurement is not necessary

Case 1	Band	Position	SAR (W/kg)	Gap (mm)	SAR peak location (mm)			3D distance (mm)	Summed SAR (W/kg)	SPLSR Results	Simultaneous SAR
					X	Y	Z				
	WLAN5GHz_Ant 1	Bottom of Laptop	1.12	0	96	24.2	0.71	108.3	2.13	0.03	Not required
	WLAN5GHz_Ant 2		1.006	0	100	-84	1.06				



15. Simultaneous Transmission Analysis for Tonail WLAN

NO.	Simultaneous Transmission Configurations	Body
5.	2.4GHz WLAN ANT 1 + 2.4GHz WLAN ANT 2	Yes
6.	5GHz WLAN ANT 1 + 5GHz WLAN ANT 2	Yes
7.	2.4GHz WLAN ANT 2+ Bluetooth ANT 1	Yes
8.	5GHz WLAN ANT 2 + Bluetooth ANT 1	Yes

General Note:

7. For SAR testing was performed on single antenna RF power in SISO mode is larger or equal to the single antenna RF power in MIMO mode, and for RF exposure assessment of MIMO mode simultaneous transmission exclusion analysis was performed with SAR test results of each antenna in SISO mode.
8. WLAN and Bluetooth share the same antenna 1, and cannot transmit simultaneously.
9. EUT will choose either WLAN 2.4GHz or WLAN 5GHz according to the network signal condition; therefore, 2.4GHz WLAN and 5GHz WLAN will not operate simultaneously at any moment.
10. The Scaled SAR summation is calculated based on the same configuration and test position.
11. Per KDB 447498 D01v06, simultaneous transmission SAR is compliant if,
 - vi) Scalar SAR summation < 1.6W/kg.
 - vii) $SPLSR = (SAR1 + SAR2)^{1.5} / (\text{min. separation distance, mm})$, and the peak separation distance is determined from the square root of $[(x1-x2)^2 + (y1-y2)^2 + (z1-z2)^2]$, where (x1, y1, z1) and (x2, y2, z2) are the coordinates of the extrapolated peak SAR locations in the zoom scan.
 - viii) If $SPLSR \leq 0.04$, simultaneously transmission SAR measurement is not necessary.
 - ix) Simultaneously transmission SAR measurement, and the reported multi-band SAR < 1.6W/kg.
12. For simultaneous transmission analysis, Bluetooth SAR is estimated per KDB 447498 D01v06 based on the formula below.
 - iv) $(\text{max. power of channel, including tune-up tolerance, mW}) / (\text{min. test separation distance, mm}) \cdot [\sqrt{f(\text{GHz})} / x] \text{ W/kg}$ for test separation distances $\leq 50 \text{ mm}$; where $x = 7.5$ for 1-g SAR, and $x = 18.75$ for 10-g SAR.
 - v) When the minimum separation distance is < 5mm, the distance is used 5mm to determine SAR test exclusion.
 - vi) 0.4 W/kg for 1-g SAR and 1.0 W/kg for 10-g SAR, when the test separation distances is > 50 mm.

Bluetooth Max Power	Exposure Position	Bottom of Laptop
6 dBm	Estimated SAR (W/kg)	0.004 W/kg

15.1 Body Exposure Conditions

Exposure Position	1	2	3	4	5	1+2 Summed 1g SAR (W/kg)	3+4 Summed 1g SAR (W/kg)	2+5 Summed 1g SAR (W/kg)	4+5 Summed 1g SAR (W/kg)
	2.4GHz WLAN Ant 1 1g SAR (W/kg)	2.4GHz WLAN Ant 2 1g SAR (W/kg)	5GHz WLAN Ant 1 1g SAR (W/kg)	5GHz WLAN Ant 2 1g SAR (W/kg)	Bluetooth Ant 1 Estimated 1g SAR (W/kg)				
Bottom of Laptop at 0 mm	0.004	0.017	0.001	0.001	0.004	0.021	0.002	0.021	0.005

16. Simultaneous Transmission Analysis for Pocket WLAN

NO.	Simultaneous Transmission Configurations	Body
9.	2.4GHz WLAN ANT 1 + 2.4GHz WLAN ANT 2	Yes
10.	5GHz WLAN ANT 1 + 5GHz WLAN ANT 2	Yes
11.	2.4GHz WLAN ANT 2+ Bluetooth ANT 1	Yes
12.	5GHz WLAN ANT 2 + Bluetooth ANT 1	Yes

General Note:

13. For SAR testing was performed on single antenna RF power in SISO mode is larger or equal to the single antenna RF power in MIMO mode, and for RF exposure assessment of MIMO mode simultaneous transmission exclusion analysis was performed with SAR test results of each antenna in SISO mode.
14. WLAN and Bluetooth share the same antenna, and cannot transmit simultaneously.
15. EUT will choose either WLAN 2.4GHz or WLAN 5GHz according to the network signal condition; therefore, 2.4GHz WLAN and 5GHz WLAN will not operate simultaneously at any moment.
16. The Scaled SAR summation is calculated based on the same configuration and test position.
17. Per KDB 447498 D01v06, simultaneous transmission SAR is compliant if,
 - x) Scalar SAR summation < 1.6W/kg.
 - xi) $SPLSR = (SAR1 + SAR2)^{1.5} / (\text{min. separation distance, mm})$, and the peak separation distance is determined from the square root of $[(x1-x2)^2 + (y1-y2)^2 + (z1-z2)^2]$, where (x1, y1, z1) and (x2, y2, z2) are the coordinates of the extrapolated peak SAR locations in the zoom scan.
 - xii) If $SPLSR \leq 0.04$, simultaneously transmission SAR measurement is not necessary.
 - xiii) Simultaneously transmission SAR measurement, and the reported multi-band SAR < 1.6W/kg.
18. For simultaneous transmission analysis, Bluetooth SAR is estimated per KDB 447498 D01v06 based on the formula below.
 - vii) $(\text{max. power of channel, including tune-up tolerance, mW}) / (\text{min. test separation distance, mm}) \cdot [\sqrt{f(\text{GHz})} / x] \text{ W/kg}$ for test separation distances $\leq 50 \text{ mm}$; where $x = 7.5$ for 1-g SAR, and $x = 18.75$ for 10-g SAR.
 - viii) When the minimum separation distance is < 5mm, the distance is used 5mm to determine SAR test exclusion.
 - ix) 0.4 W/kg for 1-g SAR and 1.0 W/kg for 10-g SAR, when the test separation distances is > 50 mm.
 - x) Bluetooth estimated SAR is conservatively determined by 5mm separation, for all applicable exposure positions.

Bluetooth Max Power	Exposure Position	All Positions
6dBm	Estimated SAR (W/kg)	0.004W/kg

16.1 Body Exposure Conditions

Exposure Position	1	2	3	4	5	1+2 Summed 1g SAR (W/kg)	3+4 Summed 1g SAR (W/kg)	2+5 Summed 1g SAR (W/kg)	4+5 Summed 1g SAR (W/kg)
	2.4GHz WLAN Ant 1	2.4GHz WLAN Ant 2	5GHz WLAN Ant 1	5GHz WLAN Ant 2	Bluetooth Ant 1				
	1g SAR (W/kg)	1g SAR (W/kg)	1g SAR (W/kg)	1g SAR (W/kg)	Estimated 1g SAR (W/kg)				
Bottom of Laptop at 0mm	0.002	0.029	0.001	0.001	0.004	0.031	0.002	0.033	0.005

Test Engineer : Jack Yang



17. Uncertainty Assessment

Per KDB 865664 D01 SAR measurement 100MHz to 6GHz, when the highest measured 1-g SAR within a frequency band is < 1.5 W/kg and the measured 10-g SAR within a frequency band is < 3.75 W/kg. The expanded SAR measurement uncertainty must be $\leq 30\%$, for a confidence interval of $k = 2$. If these conditions are met, extensive SAR measurement uncertainty analysis described in IEEE Std 1528-2013 is not required in SAR reports submitted for equipment approval. For this device, the highest measured 1-g SAR is less 1.5W/kg. Therefore, the measurement uncertainty table is not required in this report.

Declaration of Conformity:

The test results with all measurement uncertainty excluded is presented in accordance with the regulation limits or requirements declared by manufacturers.

Comments and Explanations:

The declared of product specification for EUT presented in the report are provided by the manufacturer, and the manufacturer takes all the responsibilities for the accuracy of product specification.

18. References

- [1] FCC 47 CFR Part 2 "Frequency Allocations and Radio Treaty Matters; General Rules and Regulations"
- [2] ANSI/IEEE Std. C95.1-1992, "IEEE Standard for Safety Levels with Respect to Human Exposure to Radio Frequency Electromagnetic Fields, 3 kHz to 300 GHz", September 1992
- [3] IEEE Std. 1528-2013, "IEEE Recommended Practice for Determining the Peak Spatial-Average Specific Absorption Rate (SAR) in the Human Head from Wireless Communications Devices: Measurement Techniques", Sep 2013
- [4] SPEAG DASY System Handbook
- [5] FCC KDB 248227 D01 v02r02, "SAR Guidance for IEEE 802.11 (WiFi) Transmitters", Oct 2015.
- [6] FCC KDB 447498 D01 v06, "Mobile and Portable Device RF Exposure Procedures and Equipment Authorization Policies", Oct 2015
- [7] FCC KDB 616217 D04 v01r02, "SAR Evaluation Considerations for Laptop, Notebook, Netbook and Tablet Computers", Oct 2015
- [8] FCC KDB 865664 D01 v01r04, "SAR Measurement Requirements for 100 MHz to 6 GHz", Aug 2015.
- [9] FCC KDB 865664 D02 v01r02, "RF Exposure Compliance Reporting and Documentation Considerations" Oct 2015.