

FCC SAR Test Report

Report No. : SA190628C20-1

Applicant : Lenovo (Shanghai) Electronics Technology Co., Ltd.

Address : Section 304-305, Building No. 4, # 222, Meiyue Road, China (Shanghai) Pilot Free Trade Zone

Product : Notebook Computer

FCC ID : TX2-RTL8822CE

Brand : Lenovo

Model No. : Lenovo Yoga C640-13IML, 81UE, Lenovo Yoga C640-13IML *****("*" = 0-9, A-Z, "I", or blank for Marketing purpose only)

Standards : FCC 47 CFR Part 2 (2.1093), IEEE C95.1:1992, IEEE Std 1528:2013
KDB 865664 D01 v01r04, KDB 865664 D02 v01r02
KDB 248227 D01 v02r02, KDB 447498 D01 v06, KDB 616217 D04 v01r02

Sample Received Date : Jun. 28, 2019

Date of Testing : Jul. 09, 2019 ~ Jul. 19, 2019

Lab Address : No. 47-2, 14th Ling, Chia Pau Vil., Lin Kou Dist., New Taipei City, Taiwan, R.O.C.

Test Location : No. 19, Hwa Ya 2nd Rd, Wen Hwa Vil, Kwei Shan Dist., Taoyuan City 33383, Taiwan (R.O.C)

CERTIFICATION: The above equipment have been tested by **Bureau Veritas Consumer Products Services (H.K.) Ltd., Taoyuan Branch – Lin Kou Laboratories**, and found compliance with the requirement of the above standards. The test record, data evaluation & Equipment Under Test (EUT) configurations represented herein are true and accurate accounts of the measurements of the sample's SAR characteristics under the conditions specified in this report. It should not be reproduced except in full, without the written approval of our laboratory. The client should not use it to claim product certification, approval, or endorsement by TAF or any government agencies.

Prepared By :

Gina Liu

Gina Liu / Specialist

Approved By :

Gordon Lin

Gordon Lin / Assistant Manager



FCC Accredited No.: TW0003

This report is for your exclusive use. Any copying or replication of this report to or for any other person or entity, or use of our name or trademark, is permitted only with our prior written permission. This report sets forth our findings solely with respect to the test samples identified herein. The results set forth in this report are not indicative or representative of the quality or characteristics of the lot from which a test sample was taken or any similar or identical product unless specifically and expressly noted. Our report includes all of the tests requested by you and the results thereof based upon the information that you provided to us. You have 60 days from date of issuance of this report to notify us of any material error or omission caused by our negligence, provided, however, that such notice shall be in writing and shall specifically address the issue you wish to raise. A failure to raise such issue within the prescribed time shall constitute your unqualified acceptance of the completeness of this report, the tests conducted and the correctness of the report contents. Unless specific mention, the uncertainty of measurement has been explicitly taken into account to declare the compliance or non-compliance to the specification.

Table of Contents

Release Control Record	3
1. Summary of Maximum SAR Value	4
2. Description of Equipment Under Test	5
3. SAR Measurement System	6
3.1 Definition of Specific Absorption Rate (SAR)	6
3.2 SPEAG DASY52 System	6
3.2.1 Robot	7
3.2.2 Probes	8
3.2.3 Data Acquisition Electronics (DAE)	8
3.2.4 Phantoms	9
3.2.5 Device Holder	10
3.2.6 System Validation Dipoles	10
3.2.7 Tissue Simulating Liquids	11
3.3 SAR System Verification	13
3.4 SAR Measurement Procedure	14
3.4.1 Area & Zoom Scan Procedure	14
3.4.2 Volume Scan Procedure	14
3.4.3 Power Drift Monitoring	15
3.4.4 Spatial Peak SAR Evaluation	15
3.4.5 SAR Averaged Methods	15
4. SAR Measurement Evaluation	16
4.1 EUT Configuration and Setting	16
4.2 EUT Testing Position	21
4.2.1 Body Exposure Conditions	21
4.2.2 SAR Test Exclusion Evaluations	22
4.3 Tissue Verification	24
4.4 System Validation	24
4.5 System Verification	25
4.6 Maximum Output Power	26
4.6.1 Maximum Target Conducted Power	26
4.6.2 Measured Conducted Power Result	32
4.7 SAR Testing Results	34
4.7.1 SAR Test Reduction Considerations	34
4.7.2 SAR Results for Body Exposure Condition	35
4.7.3 SAR Measurement Variability	38
4.7.4 Simultaneous Multi-band Transmission Evaluation	39
5. Calibration of Test Equipment	41
6. Measurement Uncertainty	42
7. Information of the Testing Laboratories	44
Appendix A. SAR Plots of System Verification	
Appendix B. SAR Plots of SAR Measurement	
Appendix C. Calibration Certificate for Probe and Dipole	
Appendix D. Photographs of EUT and Setup	

Release Control Record

Report No.	Reason for Change	Date Issued
SA190628C20-1	Initial release	Jul. 31, 2019

FCC SAR Test Report

1. Summary of Maximum SAR Value

Equipment Class	Mode	Highest SAR-1g Body (W/kg)	
		Tablet PC Mode	Laptop PC Mode
DTS	2.4G WLAN	0.44	0.46
NII	5.3G WLAN	0.75	0.21
	5.6G WLAN	0.63	0.19
	5.8G WLAN	0.65	0.16
DSS	Bluetooth	0.03	0.03

Highest Simultaneous Transmission SAR	Tablet PC Mode	Laptop PC Mode
	0.68	0.49

Note:

- The SAR criteria (**Head & Body: SAR-1g 1.6 W/kg, and Extremity: SAR-10g 4.0 W/kg**) for general population / uncontrolled exposure is specified in FCC 47 CFR part 2 (2.1093) and ANSI/IEEE C95.1-1992.

FCC SAR Test Report

2. Description of Equipment Under Test

EUT Type	Notebook Computer
FCC ID	TX2-RTL8822CE
Brand Name	Lenovo
Model Name	Lenovo Yoga C640-13IML, 81UE, Lenovo Yoga C640-13IML *****("*" = 0-9, A-Z, "I", or blank for Marketing purpose only)
Tx Frequency Bands (Unit: MHz)	WLAN : 2412 ~ 2462, 5180 ~ 5240, 5260 ~ 5320, 5500 ~ 5720, 5745 ~ 5825 Bluetooth : 2402 ~ 2480
Uplink Modulations	802.11b : DSSS 802.11a/g/n/ac : OFDM Bluetooth : GFSK, $\pi/4$ -DQPSK, 8-DPSK
Maximum Tune-up Conducted Power (Unit: dBm)	Please refer to section 4.6.1 of this report
Antenna Type	PIFA Antenna
EUT Stage	Engineering Sample

Note:

- The information of WLAN module collocated in this EUT is listed as below.

Item	Brand Name	Model Name	Specification
BT/WLAN Module	Realtek	RTL8822CE	802.11a/b/g/n/ac, Bluetooth

- The antenna information is listed as below.

Antenna Type	Manufacturer	Parts Number	Antenna Gain (dBi)			
			BT/WLAN 2.4GHz	WLAN 5.15~5.35 GHz	WLAN 5.47~5.725 GHz	WLAN 5.725~5.85 GHz
			Laptop Mode			
PIFA	Wistron Neweb Corporation	Main Antenna: DQ6615G4100 (81EAA615.G41) Aux. Antenna: DQ6615G4200 (81EAA615.G42)	Main: 1.99	Main: 1.99	Main: 1.96	Main: 1.98
			Aux.: 1.97	Aux.: 1.21	Aux.: 0.05	Aux.: -0.29
			Tablet Mode			
			Main: 0.98	Main: 1.98	Main: 1.98	Main: 1.98
			Aux.: 1.34	Aux.: -0.41	Aux.: 0.77	Aux.: 0.02

- The above EUT information is declared by manufacturer and for more detailed features description please refers to the manufacturer's specifications or User's Manual.

3. SAR Measurement System

3.1 Definition of Specific Absorption Rate (SAR)

SAR is related to the rate at which energy is absorbed per unit mass in an object exposed to a radio field. The SAR distribution in a biological body is complicated and is usually carried out by experimental techniques or numerical modeling. The standard recommends limits for two tiers of groups, occupational/controlled and general population/uncontrolled, based on a person's awareness and ability to exercise control over his or her exposure. In general, occupational/controlled exposure limits are higher than the limits for general population/uncontrolled.

The SAR definition is the time derivative (rate) of the incremental energy (dW) absorbed by (dissipated in) an incremental mass (dm) contained in a volume element (dv) of a given density (ρ). The equation description is as below:

$$SAR = \frac{d}{dt} \left(\frac{dW}{dm} \right) = \frac{d}{dt} \left(\frac{dW}{\rho dv} \right)$$

SAR is expressed in units of Watts per kilogram (W/kg)

SAR measurement can be related to the electrical field in the tissue by

$$SAR = \frac{\sigma |E|^2}{\rho}$$

Where: σ is the conductivity of the tissue, ρ is the mass density of the tissue and E is the RMS electrical field strength.

3.2 SPEAG DASY52 System

DASY52 system consists of high precision robot, probe alignment sensor, phantom, robot controller, controlled measurement server and near-field probe. The robot includes six axes that can move to the precision position of the DASY52 software defined. The DASY52 software can define the area that is detected by the probe. The robot is connected to controlled box. Controlled measurement server is connected to the controlled robot box. The DAE includes amplifier, signal multiplexing, AD converter, offset measurement and surface detection. It is connected to the Electro-optical coupler (ECO). The ECO performs the conversion from the optical into digital electric signal of the DAE and transfers data to the PC.

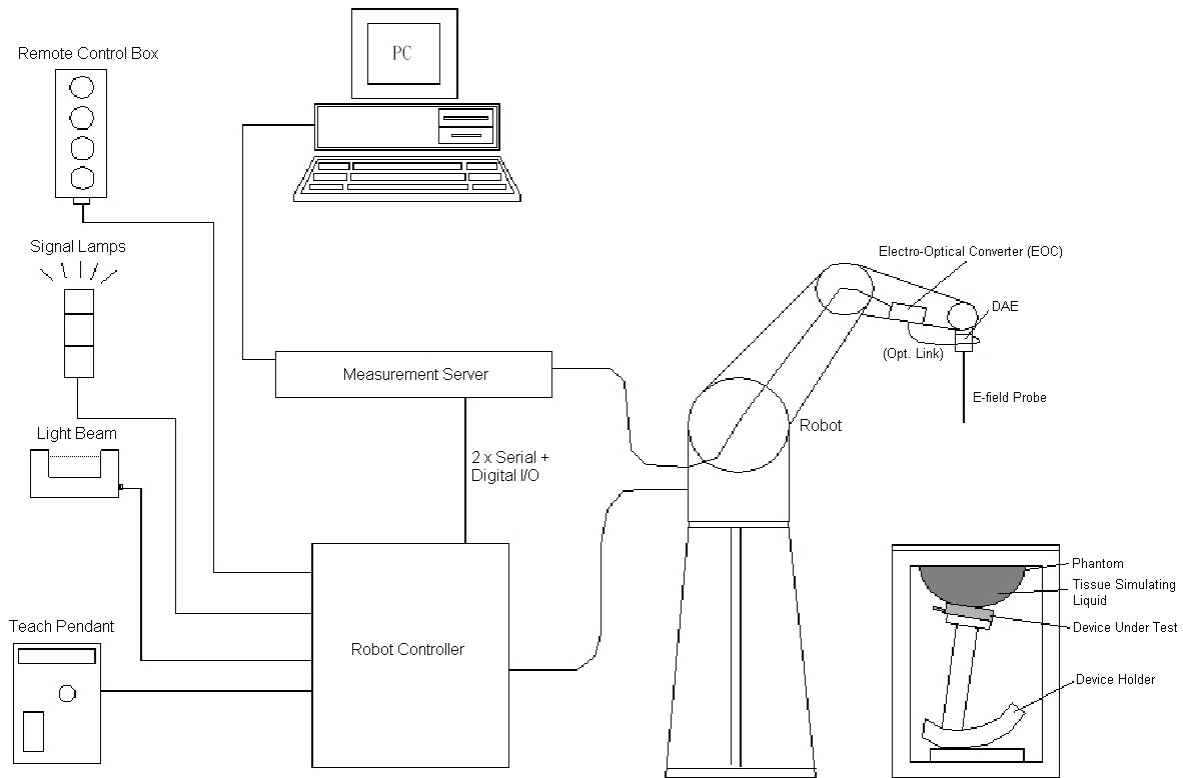


Fig-3.1 SPEAG DASY52 System Setup

3.2.1 Robot

The DASY52 systems use the high precision robots from Stäubli SA (France). For the 6-axis controller system, the robot controller version of CS8c from Stäubli is used. The Stäubli robot series have many features that are important for our application:

- High precision (repeatability ± 0.035 mm)
- High reliability (industrial design)
- Jerk-free straight movements
- Low ELF interference (the closed metallic construction shields against motor control fields)

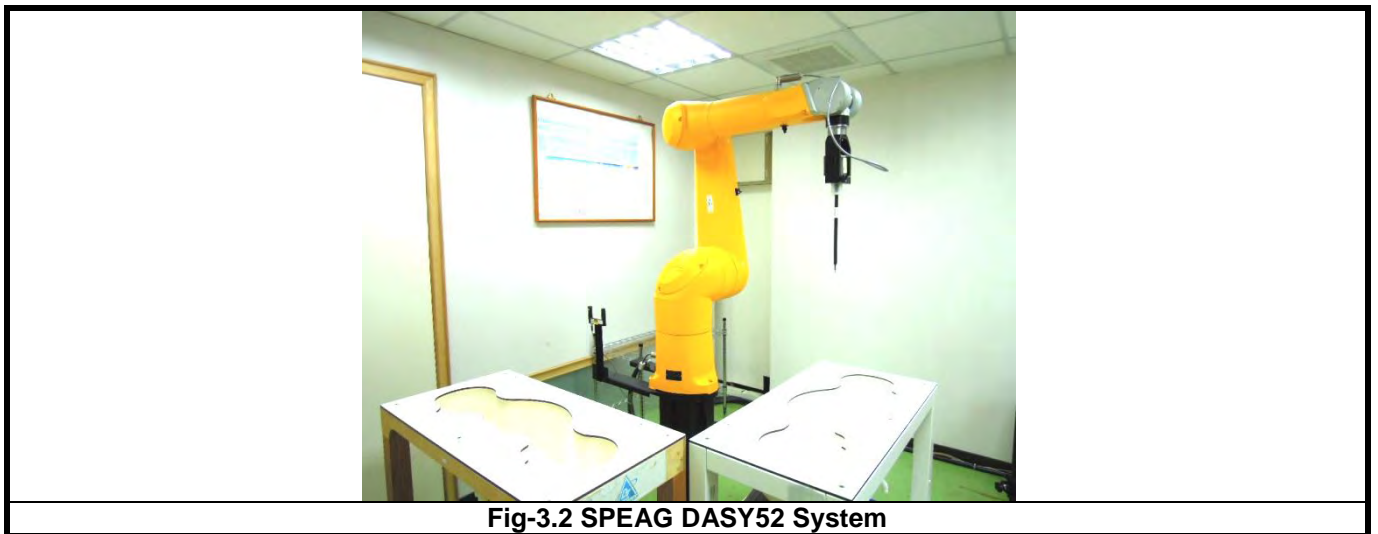




Fig-3.2 SPEAG DASY52 System


FCC SAR Test Report

3.2.2 Probes


The SAR measurement is conducted with the dosimetric probe. The probe is specially designed and calibrated for use in liquid with high permittivity. The dosimetric probe has special calibration in liquid at different frequency.

Model	EX3DV4	
Construction	Symmetrical design with triangular core. Built-in shielding against static charges. PEEK enclosure material (resistant to organic solvents, e.g., DGBE).	
Frequency	10 MHz to 6 GHz Linearity: ± 0.2 dB	
Directivity	± 0.3 dB in HSL (rotation around probe axis) ± 0.5 dB in tissue material (rotation normal to probe axis)	
Dynamic Range	10 μ W/g to 100 mW/g Linearity: ± 0.2 dB (noise: typically < 1 μ W/g)	
Dimensions	Overall length: 337 mm (Tip: 20 mm) Tip diameter: 2.5 mm (Body: 12 mm) Typical distance from probe tip to dipole centers: 1 mm	

Model	ES3DV3	
Construction	Symmetrical design with triangular core. Interleaved sensors. Built-in shielding against static charges. PEEK enclosure material (resistant to organic solvents, e.g., DGBE).	
Frequency	10 MHz to 4 GHz Linearity: ± 0.2 dB	
Directivity	± 0.2 dB in HSL (rotation around probe axis) ± 0.3 dB in tissue material (rotation normal to probe axis)	
Dynamic Range	5 μ W/g to 100 mW/g Linearity: ± 0.2 dB	
Dimensions	Overall length: 337 mm (Tip: 20 mm) Tip diameter: 3.9 mm (Body: 12 mm) Distance from probe tip to dipole centers: 2.0 mm	


Model	ET3DV6	
Construction	Symmetrical design with triangular core Built-in optical fiber for surface detection system. Built-in shielding against static charges. PEEK enclosure material (resistant to organic solvents, e.g., DGBE)	
Frequency	10 MHz to 2.3 GHz; Linearity: ± 0.2 dB	
Directivity	± 0.2 dB in TSL (rotation around probe axis) ± 0.4 dB in TSL (rotation normal to probe axis)	
Dynamic Range	5 μ W/g to 100 mW/g; Linearity: ± 0.2 dB	
Dimensions	Overall length: 337 mm (Tip: 16 mm) Tip diameter: 6.8 mm (Body: 12 mm) Distance from probe tip to dipole centers: 2.7 mm	


3.2.3 Data Acquisition Electronics (DAE)

Model	DAE3, DAE4	
Construction	Signal amplifier, multiplexer, A/D converter and control logic. Serial optical link for communication with DASY embedded system (fully remote controlled). Two step probe touch detector for mechanical surface detection and emergency robot stop.	
Measurement Range	-100 to +300 mV (16 bit resolution and two range settings: 4mV, 400mV)	
Input Offset Voltage	$< 5\mu$ V (with auto zero)	
Input Bias Current	< 50 fA	
Dimensions	60 x 60 x 68 mm	

FCC SAR Test Report


3.2.4 Phantoms


Model	Twin SAM	
Construction	The shell corresponds to the specifications of the Specific Anthropomorphic Mannequin (SAM) phantom defined in IEEE 1528 and IEC 62209-1. It enables the dosimetric evaluation of left and right hand phone usage as well as body mounted usage at the flat phantom region. A cover prevents evaporation of the liquid. Reference markings on the phantom allow the complete setup of all predefined phantom positions and measurement grids by teaching three points with the robot.	
Material	Vinylester, glass fiber reinforced (VE-GF)	
Shell Thickness	2 ± 0.2 mm (6 ± 0.2 mm at ear point)	
Dimensions	Length: 1000 mm Width: 500 mm Height: adjustable feet	
Filling Volume	approx. 25 liters	

Model	ELI	
Construction	Phantom for compliance testing of handheld and body-mounted wireless devices in the frequency range of 30 MHz to 6 GHz. ELI is fully compatible with the IEC 62209-2 standard and all known tissue simulating liquids. ELI has been optimized regarding its performance and can be integrated into our standard phantom tables. A cover prevents evaporation of the liquid. Reference markings on the phantom allow installation of the complete setup, including all predefined phantom positions and measurement grids, by teaching three points. The phantom is compatible with all SPEAG dosimetric probes and dipoles.	
Material	Vinylester, glass fiber reinforced (VE-GF)	
Shell Thickness	2.0 ± 0.2 mm (bottom plate)	
Dimensions	Major axis: 600 mm Minor axis: 400 mm	
Filling Volume	approx. 30 liters	


FCC SAR Test Report

3.2.5 Device Holder

Model	Mounting Device	
Construction	In combination with the Twin SAM Phantom or ELI4, the Mounting Device enables the rotation of the mounted transmitter device in spherical coordinates. Rotation point is the ear opening point. Transmitter devices can be easily and accurately positioned according to IEC, IEEE, FCC or other specifications. The device holder can be locked for positioning at different phantom sections (left head, right head, flat).	
Material	POM	

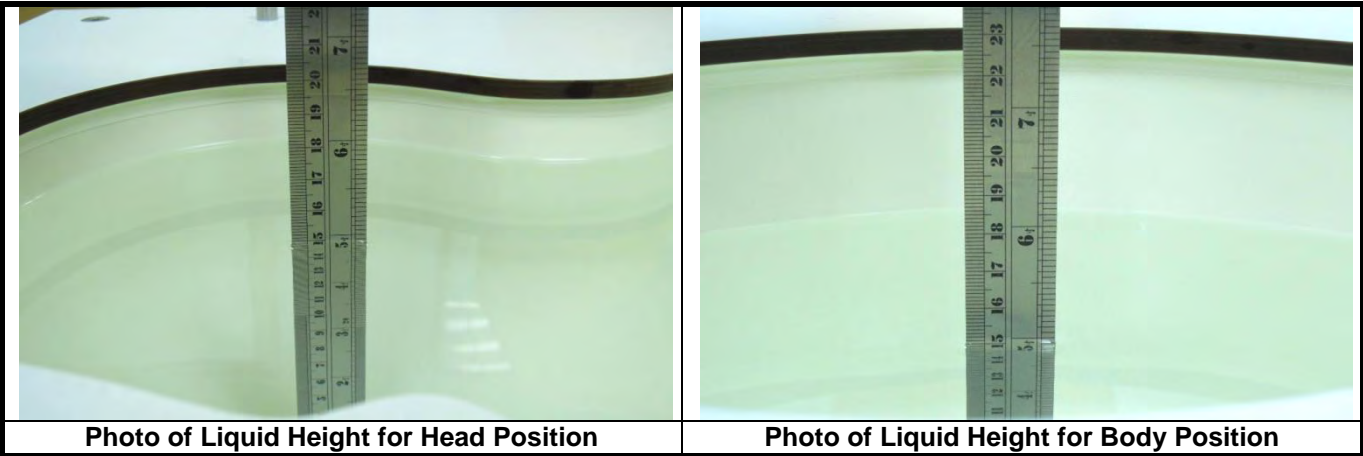
Model	Laptop Extensions Kit	
Construction	Simple but effective and easy-to-use extension for Mounting Device that facilitates the testing of larger devices according to IEC 62209-2 (e.g., laptops, cameras, etc.). It is lightweight and fits easily on the upper part of the Mounting Device in place of the phone positioner.	
Material	POM, Acrylic glass, Foam	

3.2.6 System Validation Dipoles

Model	D-Serial	
Construction	Symmetrical dipole with 1/4 balun. Enables measurement of feed point impedance with NWA. Matched for use near flat phantoms filled with tissue simulating solutions.	
Frequency	750 MHz to 5800 MHz	
Return Loss	> 20 dB	
Power Capability	> 100 W (f < 1GHz), > 40 W (f > 1GHz)	

3.2.7 Tissue Simulating Liquids

For SAR measurement of the field distribution inside the phantom, the phantom must be filled with homogeneous tissue simulating liquid to a depth of at least 15 cm. For head SAR testing, the liquid height from the ear reference point (ERP) of the phantom to the liquid top surface is larger than 15 cm. For body SAR testing, the liquid height from the center of the flat phantom to the liquid top surface is larger than 15 cm. The nominal dielectric values of the tissue simulating liquids in the phantom and the tolerance of 5% are listed in Table-3.1.



The dielectric properties of the head tissue simulating liquids are defined in IEEE 1528, and KDB 865664 D01 Appendix A. For the body tissue simulating liquids, the dielectric properties are defined in KDB 865664 D01 Appendix A. The dielectric properties of the tissue simulating liquids were verified prior to the SAR evaluation using a dielectric assessment kit and a network analyzer.

FCC SAR Test Report

Table-3.1 Targets of Tissue Simulating Liquid

Frequency (MHz)	Target Permittivity	Range of $\pm 5\%$	Target Conductivity	Range of $\pm 5\%$
750	41.9	39.8 ~ 44.0	0.89	0.85 ~ 0.93
835	41.5	39.4 ~ 43.6	0.90	0.86 ~ 0.95
900	41.5	39.4 ~ 43.6	0.97	0.92 ~ 1.02
1450	40.5	38.5 ~ 42.5	1.20	1.14 ~ 1.26
1640	40.3	38.3 ~ 42.3	1.29	1.23 ~ 1.35
1750	40.1	38.1 ~ 42.1	1.37	1.30 ~ 1.44
1800	40.0	38.0 ~ 42.0	1.40	1.33 ~ 1.47
1900	40.0	38.0 ~ 42.0	1.40	1.33 ~ 1.47
2000	40.0	38.0 ~ 42.0	1.40	1.33 ~ 1.47
2300	39.5	37.5 ~ 41.5	1.67	1.59 ~ 1.75
2450	39.2	37.2 ~ 41.2	1.80	1.71 ~ 1.89
2600	39.0	37.1 ~ 41.0	1.96	1.86 ~ 2.06
3500	37.9	36.0 ~ 39.8	2.91	2.76 ~ 3.06
5200	36.0	34.2 ~ 37.8	4.66	4.43 ~ 4.89
5300	35.9	34.1 ~ 37.7	4.76	4.52 ~ 5.00
5500	35.6	33.8 ~ 37.4	4.96	4.71 ~ 5.21
5600	35.5	33.7 ~ 37.3	5.07	4.82 ~ 5.32
5800	35.3	33.5 ~ 37.1	5.27	5.01 ~ 5.53

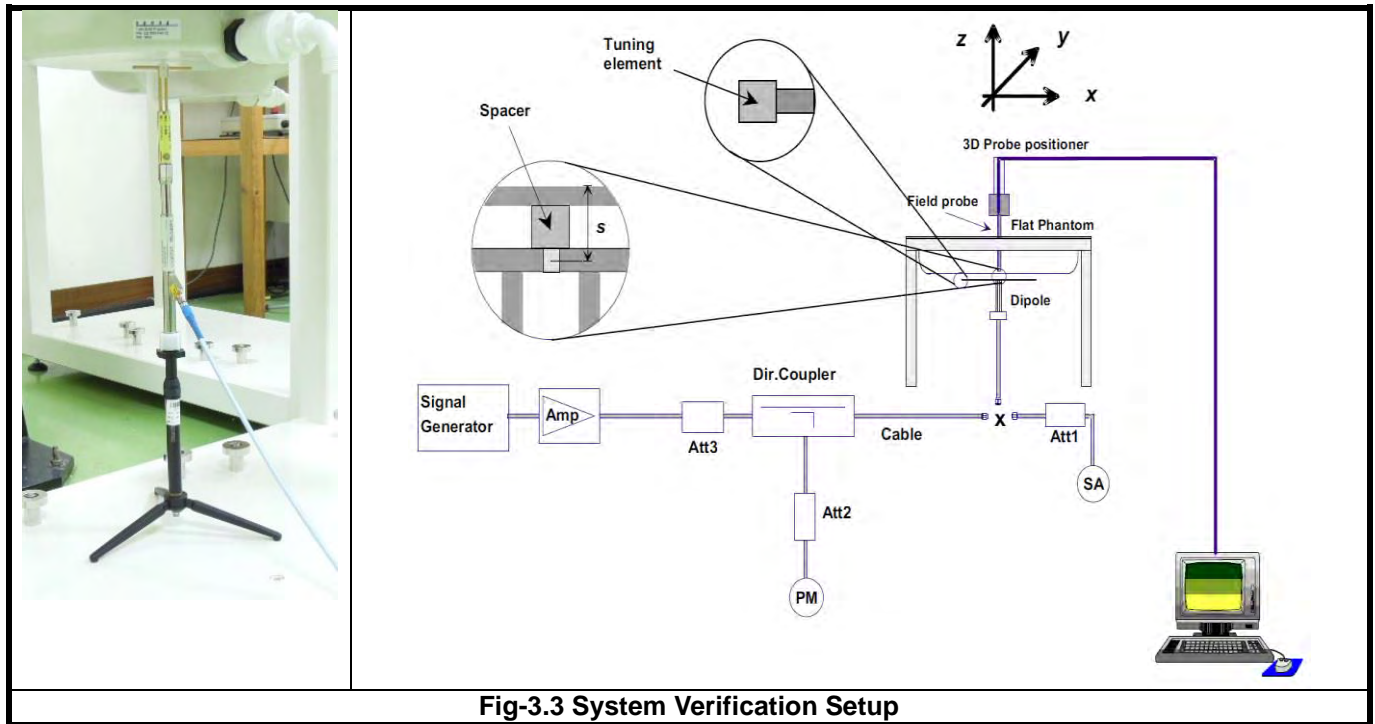
The following table gives the recipes for tissue simulating liquids.

Table-3.2 Recipes of Tissue Simulating Liquid

Tissue Type	Bactericide	DGBE	HEC	NaCl	Sucrose	Triton X-100	Water	Diethylene Glycol Mono-hexylether
H750	0.2	-	0.2	1.5	56.0	-	42.1	-
H835	0.2	-	0.2	1.5	57.0	-	41.1	-
H900	0.2	-	0.2	1.4	58.0	-	40.2	-
H1450	-	43.3	-	0.6	-	-	56.1	-
H1640	-	45.8	-	0.5	-	-	53.7	-
H1750	-	47.0	-	0.4	-	-	52.6	-
H1800	-	44.5	-	0.3	-	-	55.2	-
H1900	-	44.5	-	0.2	-	-	55.3	-
H2000	-	44.5	-	0.1	-	-	55.4	-
H2300	-	44.9	-	0.1	-	-	55.0	-
H2450	-	45.0	-	0.1	-	-	54.9	-
H2600	-	45.1	-	0.1	-	-	54.8	-
H3500	-	8.0	-	0.2	-	20.0	71.8	-
H5G	-	-	-	-	-	17.2	65.5	17.3

3.3 SAR System Verification

The system check verifies that the system operates within its specifications. It is performed daily or before every SAR measurement. The system check uses normal SAR measurements in the flat section of the phantom with a matched dipole at a specified distance. The system verification setup is shown as below.



The validation dipole is placed beneath the flat phantom with the specific spacer in place. The distance spacer is touch the phantom surface with a light pressure at the reference marking and be oriented parallel to the long side of the phantom. The spectrum analyzer measures the forward power at the location of the system check dipole connector. The signal generator is adjusted for the desired forward power (250 mW is used for 700 MHz to 3 GHz, 100 mW is used for 3.5 GHz to 6 GHz) at the dipole connector and the power meter is read at that level. After connecting the cable to the dipole, the signal generator is readjusted for the same reading at power meter.

After system check testing, the SAR result will be normalized to 1W forward input power and compared with the reference SAR value derived from validation dipole certificate report. The deviation of system check should be within 10 %.

3.4 SAR Measurement Procedure

According to the SAR test standard, the recommended procedure for assessing the peak spatial-average SAR value consists of the following steps:

- Power reference measurement
- Area scan
- Zoom scan
- Power drift measurement

The SAR measurement procedures for each of test conditions are as follows:

- Make EUT to transmit maximum output power
- Measure conducted output power through RF cable
- Place the EUT in the specific position of phantom
- Perform SAR testing steps on the DASY system
- Record the SAR value

3.4.1 Area & Zoom Scan Procedure

First Area Scan is used to locate the approximate location(s) of the local peak SAR value(s). The measurement grid within an Area Scan is defined by the grid extent, grid step size and grid offset. Next, in order to determine the EM field distribution in a three-dimensional spatial extension, Zoom Scan is required. The Zoom Scan is performed around the highest E-field value to determine the averaged SAR-distribution over 10 g. According to KDB 865664 D01, the resolution for Area and Zoom scan is specified in the table below.

Items	<= 2 GHz	2-3 GHz	3-4 GHz	4-5 GHz	5-6 GHz
Area Scan ($\Delta x, \Delta y$)	<= 15 mm	<= 12 mm	<= 12 mm	<= 10 mm	<= 10 mm
Zoom Scan ($\Delta x, \Delta y$)	<= 8 mm	<= 5 mm	<= 5 mm	<= 4 mm	<= 4 mm
Zoom Scan (Δz)	<= 5 mm	<= 5 mm	<= 4 mm	<= 3 mm	<= 2 mm
Zoom Scan Volume	>= 30 mm	>= 30 mm	>= 28 mm	>= 25 mm	>= 22 mm

Note:

When zoom scan is required and report SAR is <= 1.4 W/kg, the zoom scan resolution of $\Delta x / \Delta y$ (2-3GHz: <= 8 mm, 3-4GHz: <= 7 mm, 4-6GHz: <= 5 mm) may be applied.

3.4.2 Volume Scan Procedure

The volume scan is used for assess overlapping SAR distributions for antennas transmitting in different frequency bands. It is equivalent to an oversized zoom scan used in standalone measurements. The measurement volume will be used to enclose all the simultaneous transmitting antennas. For antennas transmitting simultaneously in different frequency bands, the volume scan is measured separately in each frequency band. In order to sum correctly to compute the 1g aggregate SAR, the EUT remain in the same test position for all measurements and all volume scan use the same spatial resolution and grid spacing. When all volume scan were completed, the software, SEMCAD postprocessor can combine and subsequently superpose these measurement data to calculating the multiband SAR.

3.4.3 Power Drift Monitoring

All SAR testing is under the EUT install full charged battery and transmit maximum output power. In DASY measurement software, the power reference measurement and power drift measurement procedures are used for monitoring the power drift of EUT during SAR test. Both these procedures measure the field at a specified reference position before and after the SAR testing. The software will calculate the field difference in dB. If the power drift more than 5%, the SAR will be retested.

3.4.4 Spatial Peak SAR Evaluation

The procedure for spatial peak SAR evaluation has been implemented according to the test standard. It can be conducted for 1g and 10g, as well as for user-specific masses. The DASY software includes all numerical procedures necessary to evaluate the spatial peak SAR value.

The base for the evaluation is a "cube" measurement. The measured volume must include the 1g and 10g cubes with the highest averaged SAR values. For that purpose, the center of the measured volume is aligned to the interpolated peak SAR value of a previously performed area scan.

The entire evaluation of the spatial peak values is performed within the post-processing engine (SEMCAD). The system always gives the maximum values for the 1g and 10g cubes. The algorithm to find the cube with highest averaged SAR is divided into the following stages:

- (a) Extraction of the measured data (grid and values) from the Zoom Scan
- (b) Calculation of the SAR value at every measurement point based on all stored data (A/D values and measurement parameters)
- (c) Generation of a high-resolution mesh within the measured volume
- (d) Interpolation of all measured values from the measurement grid to the high-resolution grid
- (e) Extrapolation of the entire 3-D field distribution to the phantom surface over the distance from sensor to surface
- (f) Calculation of the averaged SAR within masses of 1g and 10g

3.4.5 SAR Averaged Methods

In DASY, the interpolation and extrapolation are both based on the modified Quadratic Shepard's method. The interpolation scheme combines a least-square fitted function method and a weighted average method which are the two basic types of computational interpolation and approximation.

Extrapolation routines are used to obtain SAR values between the lowest measurement points and the inner phantom surface. The extrapolation distance is determined by the surface detection distance and the probe sensor offset. The uncertainty increases with the extrapolation distance. To keep the uncertainty within 1% for the 1 g and 10 g cubes, the extrapolation distance should not be larger than 5 mm.

4. SAR Measurement Evaluation

4.1 EUT Configuration and Setting

<Considerations Related to Proximity Sensor>

The device supports WLAN, and Bluetooth capabilities. It is designed with a proximity sensor which can trigger/not trigger power reduction for WLAN on Rear Face, Left Side and Top Side of EUT for SAR compliance. Others RF capability (Bluetooth) have no power reduction. The power levels for all wireless technologies and the power reduction please refer to section 4.6 of this report.

Proximity Sensor Triggering Distances (KDB 616217 D04 §6.2)

The proximity sensor triggering distance was determined per KDB 616217 for rear face and applicable edge. Summary for power verification per distance was tabulated in the below table.

Output Power Verification in dBm for EUT Rear Face											
Distance (mm)	21	22	23	24	25	26	27	28	29	30	31
WLAN 2.4G	9.5	9.6	9.6	9.4	9.7	9.4	16.8	16.7	16.9	16.9	17.0
WLAN 5.3G	9.1	9.4	9.3	9.1	9.2	9.1	17.5	17.5	17.6	17.9	17.4
WLAN 5.6G	8.9	8.8	8.4	8.9	8.9	8.7	17.7	17.4	17.7	17.4	17.6
WLAN 5.8G	8.4	8.1	8.1	8.4	7.9	7.9	17.5	17.8	18.0	17.5	18.0

Output Power Verification in dBm for EUT Left Side											
Distance (mm)	16	17	18	19	20	21	22	23	24	25	26
WLAN 2.4G	9.9	9.5	9.9	9.5	9.8	9.4	17.0	16.8	16.7	16.7	16.8
WLAN 5.3G	9.3	9.5	9.5	9.2	9.4	9.2	17.4	17.6	17.5	17.6	17.4
WLAN 5.6G	8.6	8.5	8.9	8.6	8.7	8.6	17.8	17.7	17.4	17.5	17.9
WLAN 5.8G	8.2	7.9	8.2	8.4	7.9	8.1	17.7	18.0	18.0	17.6	17.6

Output Power Verification in dBm for EUT Top Side											
Distance (mm)	9	10	11	12	13	14	15	16	17	18	19
WLAN 2.4G	9.6	9.6	9.7	9.6	9.6	9.4	16.9	16.6	16.5	17.0	16.9
WLAN 5.3G	9.0	9.1	9.1	9.1	9.0	9.4	17.4	17.7	17.6	17.6	17.8
WLAN 5.6G	8.7	8.9	8.6	8.8	8.4	8.9	17.6	17.9	17.9	17.9	17.7
WLAN 5.8G	8.1	8.4	7.9	8.0	8.1	8.3	17.8	17.5	17.8	17.7	17.5

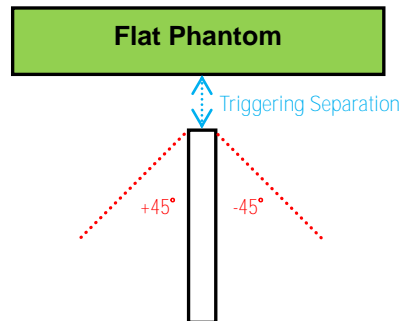
Proximity Sensor Coverage (KDB 616217 D04 §6.3)

Since the proximity sensor is collocated with antenna in one component, the procedure for proximity sensor coverage is not required.

FCC SAR Test Report

Proximity Sensor Tilt Angle Influences (KDB 616217 D04 §6.4)

The proximity sensor tilt angle influence was determined per KDB 616217 for applicable edge. Summary for proximity sensor tilt angle influence is shown in below.



Orientation	Separation Distance (mm)	Tilt Angle										
		-45°	-40°	-30°	-20°	-10°	0°	10°	20°	30°	40°	45°
Top Edge	14	On	On	On	On	On	On	On	On	On	On	On
Left Edge	21	On	On	On	On	On	On	On	On	On	On	On

Summary for Proximity Sensor Triggering Test

According to the procedures noticed in KDB 616217 D04, the proximity sensor triggering distance is 26 mm for EUT Rear Face, 21mm for Left Side and 14 mm for Top Side. The separation distance of 14 mm determined by the smallest triggering distance on Top Side is used to access the tilt angle influence and the sensor does not release during ± 45 degree. Therefore, the smallest separation distance for tilt angle influence is 21 mm for the Left Side. The conservation triggering distances based on the separation distance for the sensor trigger / not triggered as EUT with power reduction at 25 mm, and EUT without power reduction at 25 mm for EUT Rear Face, 20 mm for EUT Left Side and 13 mm for Top Side were used to test SAR.

The power reduction is depends on the proximity sensor input. For a steady SAR test, the power reduction was enabled or disabled manually by engineering software during SAR testing.

<Considerations Related to WLAN for Setup and Testing>

In general, various vendor specific external test software and chipset based internal test modes are typically used for SAR measurement. These chipset based test mode utilities are generally hardware and manufacturer dependent, and often include substantial flexibility to reconfigure or reprogram a device. A Wi-Fi device must be configured to transmit continuously at the required data rate, channel bandwidth and signal modulation, using the highest transmission duty factor supported by the test mode tools for SAR measurement. The test frequencies established using test mode must correspond to the actual channel frequencies. When 802.11 frame gaps are accounted for in the transmission, a maximum transmission duty factor of 92 - 96% is typically achievable in most test mode configurations. A minimum transmission duty factor of 85% is required to avoid certain hardware and device implementation issues related to wide range SAR scaling. In addition, a periodic transmission duty factor is required for current generation SAR systems to measure SAR correctly. The reported SAR must be scaled to 100% transmission duty factor to determine compliance at the maximum tune-up tolerance limit.

According to KDB 248227 D01, this device has installed WLAN engineering testing software which can provide continuous transmitting RF signal. During WLAN SAR testing, this device was operated to transmit continuously at the maximum transmission duty with specified transmission mode, operating frequency, lowest data rate, and maximum output power.

Initial Test Configuration

An initial test configuration is determined for OFDM transmission modes in 2.4 GHz and 5 GHz bands according to the channel bandwidth, modulation and data rate combination(s) with the highest maximum output power specified for production units in each standalone and aggregated frequency band. When the same maximum power is specified for multiple transmission modes in a frequency band, the largest channel bandwidth, lowest order modulation, lowest data rate and lowest order 802.11a/g/n/ac mode is used for SAR measurement, on the highest measured output power channel in the initial test configuration, for each frequency band.

Subsequent Test Configuration

SAR measurement requirements for the remaining 802.11 transmission mode configurations that have not been tested in the initial test configuration are determined separately for each standalone and aggregated frequency band, in each exposure condition, according to the maximum output power specified for production units. Additional power measurements may be required to determine if SAR measurements are required for subsequent highest output power channels in a subsequent test configuration. When the highest reported SAR for the initial test configuration according to the initial test position or fixed exposure position requirements, is adjusted by the ratio of the subsequent test configuration to initial test configuration specified maximum output power and the adjusted SAR is ≤ 1.2 W/kg, SAR is not required for that subsequent test configuration.

SAR Test Configuration and Channel Selection

When multiple channel bandwidth configurations in a frequency band have the same specified maximum output power, the initial test configuration is using largest channel bandwidth, lowest order modulation, lowest data rate, and lowest order 802.11 mode (i.e., 802.11a is chosen over 802.11n then 802.11ac or 802.11g is chosen over 802.11n). After an initial test configuration is determined, if multiple test channels have the same measured maximum output power, the channel chosen for SAR measurement is determined according to the following.

- 1) The channel closest to mid-band frequency is selected for SAR measurement.
- 2) For channels with equal separation from mid-band frequency; for example, high and low channels or two mid-band channels, the higher frequency (number) channel is selected for SAR measurement.

Test Reduction for U-NII-1 (5.2 GHz) and U-NII-2A (5.3 GHz) Bands

For devices that operate in both U-NII bands using the same transmitter and antenna(s), SAR test reduction is determined according to the following.

- 1) When the same maximum output power is specified for both bands, begin SAR measurement in U-NII-2A band by applying the OFDM SAR requirements. If the highest reported SAR for a test configuration is ≤ 1.2 W/kg, SAR is not required for U-NII-1 band for that configuration (802.11 mode and exposure condition).
- 2) When different maximum output power is specified for the bands, begin SAR measurement in the band with higher specified maximum output power. The highest reported SAR for the tested configuration is adjusted by the ratio of lower to higher specified maximum output power for the two bands. When the adjusted SAR is ≤ 1.2 W/kg, SAR is not required for the band with lower maximum output power in that test configuration.

FCC SAR Test Report

<Considerations Related to Bluetooth for Setup and Testing>

This device has installed Bluetooth engineering testing software which can provide continuous transmitting RF signal. During Bluetooth SAR testing, this device was operated to transmit continuously at the maximum transmission duty with specified transmission mode, operating frequency, lowest data rate, and maximum output power.

The Bluetooth call box has been used during SAR measurement and the EUT was set to LE mode at the maximum output power. Its duty factor was calculated as below and the measured SAR for Bluetooth would be scaled to the 100% transmission duty factor to determine compliance.



Time-domain plot for Bluetooth transmission signal

The duty factor of Bluetooth signal has been calculated as following.

$$\text{Duty Factor} = (9.075 - 6.93) \text{ ms} / (9.435 - 6.93) \text{ ms} = 85.6 \%$$

4.2 EUT Testing Position

4.2.1 Body Exposure Conditions

For full-size tablet, according to KDB 616217 D04, SAR evaluation is required for back surface and edges of the devices. The back surface and edges of the tablet are tested with the tablet touching the phantom. Exposures from antennas through the front surface of the display section of a tablet are generally limited to the user's hands. Exposures to hands for typical consumer transmitters used in tablets are not expected to exceed the extremity SAR limit; therefore, SAR evaluation for the front surface of tablet display screens are generally not necessary. When voice mode is supported on a tablet and it is limited to speaker mode or headset operations only, additional SAR testing for this type of voice use is not required.

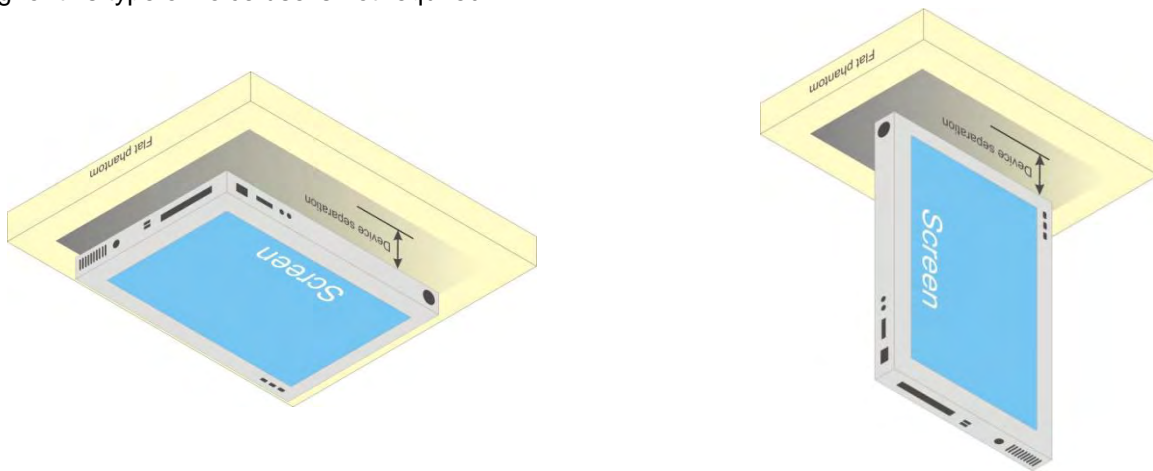


Fig-4.1 Illustration for Tablet Setup

For laptop PC, according to KDB 616217 D04, SAR evaluation is required for the bottom surface of the keyboard. This EUT was tested in the base of EUT directly against the flat phantom. The required minimum test separation distance for incorporating transmitters and antennas into laptop computer display is determined with the display screen opened at an angle of 90° to the keyboard compartment.

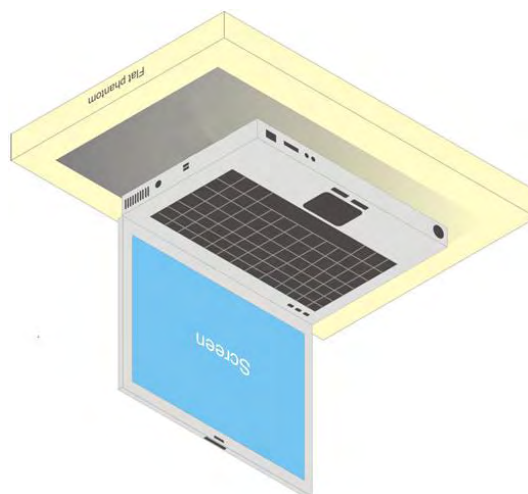


Fig-4.2 Illustration for Laptop Setup

FCC SAR Test Report

4.2.2 SAR Test Exclusion Evaluations

According to KDB 447498 D01, the SAR test exclusion condition is based on source-based time-averaged maximum conducted output power, adjusted for tune-up tolerance, and the minimum test separation distance required for the exposure conditions. The SAR exclusion threshold is determined by the following formula.

- For the test separation distance ≤ 50 mm

$$\frac{\text{Max. Tune up Power}_{(\text{mW})}}{\text{Min. Test Separation Distance}_{(\text{mm})}} \times \sqrt{f_{(\text{GHz})}} \leq 3.0 \text{ for SAR-1g, } \leq 7.5 \text{ for SAR-10g}$$

When the minimum test separation distance is < 5 mm, a distance of 5 mm is applied to determine SAR test exclusion.

- For the test separation distance > 50 mm, and the frequency at 100 MHz to 1500 MHz

$$\left[(\text{Threshold at 50 mm in Step 1}) + (\text{Test Separation Distance} - 50 \text{ mm}) \times \left(\frac{f_{(\text{MHz})}}{150} \right) \right]_{(\text{mW})}$$

- For the test separation distance > 50 mm, and the frequency at > 1500 MHz to 6 GHz

$$[(\text{Threshold at 50 mm in Step 1}) + (\text{Test Separation Distance} - 50 \text{ mm}) \times 10]_{(\text{mW})}$$

<For WLAN Ant-0>

Mode	Max. Tune-up Power (dBm)	Max. Tune-up Power (mW)	Rear Face			Left Side			Right Side			Top Side			Bottom Side		
			Ant. to Surface (mm)	Calculated Result	Require SAR Testing?	Ant. to Surface (mm)	Calculated Result	Require SAR Testing?	Ant. to Surface (mm)	Calculated Result	Require SAR Testing?	Ant. to Surface (mm)	Calculated Result	Require SAR Testing?	Ant. to Surface (mm)	Calculated Result	Require SAR Testing?
WLAN 2.4G	18.0	63	5	19.77	Yes	42	2.35	No	215	1746 mW	No	7	14.12	Yes	161	1206 mW	No
WLAN 5.2G	18.0	63	5	28.84	Yes	42	3.43	Yes	215	1716 mW	No	7	20.6	Yes	161	1176 mW	No
WLAN 5.3G	18.0	63	5	29.06	Yes	42	3.46	Yes	215	1715 mW	No	7	20.76	Yes	161	1175 mW	No
WLAN 5.6G	18.0	63	5	30.13	Yes	42	3.59	Yes	215	1713 mW	No	7	21.52	Yes	161	1173 mW	No
WLAN 5.8G	18.0	63	5	30.41	Yes	42	3.62	Yes	215	1712 mW	No	7	21.72	Yes	161	1172 mW	No

<For BT/WLAN Ant-1>

Mode	Max. Tune-up Power (dBm)	Max. Tune-up Power (mW)	Rear Face			Left Side			Right Side			Top Side			Bottom Side		
			Ant. to Surface (mm)	Calculated Result	Require SAR Testing?	Ant. to Surface (mm)	Calculated Result	Require SAR Testing?	Ant. to Surface (mm)	Calculated Result	Require SAR Testing?	Ant. to Surface (mm)	Calculated Result	Require SAR Testing?	Ant. to Surface (mm)	Calculated Result	Require SAR Testing?
WLAN 2.4G	18.0	63	5	19.77	Yes	235	1946 mW	No	26	3.8	Yes	7	14.12	Yes	161	1206 mW	No
WLAN 5.2G	18.0	63	5	28.84	Yes	235	1916 mW	No	26	5.55	Yes	7	20.6	Yes	161	1176 mW	No
WLAN 5.3G	18.0	63	5	29.06	Yes	235	1915 mW	No	26	5.59	Yes	7	20.76	Yes	161	1175 mW	No
WLAN 5.6G	18.0	63	5	30.13	Yes	235	1913 mW	No	26	5.8	Yes	7	21.52	Yes	161	1173 mW	No
WLAN 5.8G	18.0	63	5	30.41	Yes	235	1912 mW	No	26	5.85	Yes	7	21.72	Yes	161	1172 mW	No
BT	6.0	4	5	1.26	No	235	1945 mW	No	26	0.24	No	7	0.9	No	161	1205 mW	No

FCC SAR Test Report

<For WLAN Ant-0 + Ant-1>

Mode	Max. Tune-up Power (dBm)	Max. Tune-up Power (mW)	Rear Face			Left Side			Right Side			Top Side			Bottom Side		
			Ant. to Surface (mm)	Calculated Result	Require SAR Testing?	Ant. to Surface (mm)	Calculated Result	Require SAR Testing?	Ant. to Surface (mm)	Calculated Result	Require SAR Testing?	Ant. to Surface (mm)	Calculated Result	Require SAR Testing?	Ant. to Surface (mm)	Calculated Result	Require SAR Testing?
WLAN 2.4G	18.0	63	5	19.77	Yes	42	2.35	No	26	3.8	Yes	7	14.12	Yes	161	1206 mW	No
WLAN 5.2G	21.0	126	5	57.69	Yes	42	6.87	Yes	26	11.09	Yes	7	41.2	Yes	161	1176 mW	No
WLAN 5.3G	18.5	71	5	32.75	Yes	42	3.9	Yes	26	6.3	Yes	7	23.39	Yes	161	1175 mW	No
WLAN 5.6G	18.0	63	5	30.13	Yes	42	3.59	Yes	26	5.8	Yes	7	21.52	Yes	161	1173 mW	No
WLAN 5.8G	18.0	63	5	30.41	Yes	42	3.62	Yes	26	5.85	Yes	7	21.72	Yes	161	1172 mW	No

FCC SAR Test Report

4.3 Tissue Verification

The measuring results for tissue simulating liquid are shown as below.

Test Date	Frequency (MHz)	Liquid Temp. (°C)	Measured Conductivity (σ)	Measured Permittivity (ϵ_r)	Target Conductivity (σ)	Target Permittivity (ϵ_r)	Conductivity Deviation (%)	Permittivity Deviation (%)
Jul. 18, 2019	2450	23.4	1.868	37.896	1.8	39.2	3.78	-3.33
Jul. 09, 2019	5250	23.4	4.7	36.799	4.71	35.9	-0.21	2.50
Jul. 17, 2019	5250	23.4	4.86	36.397	4.71	35.9	3.18	1.38
Jul. 19, 2019	5250	23.4	4.791	37.279	4.71	35.9	1.72	3.84
Jul. 09, 2019	5600	23.4	5.074	36.37	5.07	35.5	0.08	2.45
Jul. 16, 2019	5600	23.3	4.986	36.942	5.07	35.5	-1.66	4.06
Jul. 19, 2019	5600	23.4	5.137	36.718	5.07	35.5	1.32	3.43
Jul. 17, 2019	5750	23.4	5.412	35.45	5.22	35.4	3.68	0.14
Jul. 19, 2019	5750	23.4	5.281	36.326	5.22	35.4	1.17	2.62

Note:

The dielectric properties of the tissue simulating liquid must be measured within 24 hours before the SAR testing and within $\pm 5\%$ of the target values. Liquid temperature during the SAR testing must be within $\pm 2^\circ\text{C}$.

4.4 System Validation

The SAR measurement system was validated according to procedures in KDB 865664 D01. The validation status in tabulated summary is as below.

Test Date	Probe S/N	Calibration Point	Measured Conductivity (σ)	Measured Permittivity (ϵ_r)	Validation for CW			Validation for Modulation		
					Sensitivity Range	Probe Linearity	Probe Isotropy	Modulation Type	Duty Factor	PAR
Jul. 18, 2019	3971	2450	1.868	37.896	Pass	Pass	Pass	OFDM	N/A	Pass
Jul. 09, 2019	3650	5250	4.7	36.799	Pass	Pass	Pass	OFDM	N/A	Pass
Jul. 17, 2019	3971	5250	4.86	36.397	Pass	Pass	Pass	OFDM	N/A	Pass
Jul. 19, 2019	3971	5250	4.791	37.279	Pass	Pass	Pass	OFDM	N/A	Pass
Jul. 09, 2019	3650	5600	5.074	36.37	Pass	Pass	Pass	OFDM	N/A	Pass
Jul. 16, 2019	3971	5600	4.986	36.942	Pass	Pass	Pass	OFDM	N/A	Pass
Jul. 19, 2019	3971	5600	5.137	36.718	Pass	Pass	Pass	OFDM	N/A	Pass
Jul. 17, 2019	3971	5750	5.412	35.45	Pass	Pass	Pass	OFDM	N/A	Pass
Jul. 19, 2019	3971	5750	5.281	36.326	Pass	Pass	Pass	OFDM	N/A	Pass

FCC SAR Test Report

4.5 System Verification

The measuring result for system verification is tabulated as below.

Test Date	Frequency (MHz)	1W Target SAR-1g (W/kg)	Measured SAR-1g (W/kg)	Normalized to 1W SAR-1g (W/kg)	Deviation (%)	Dipole S/N	Probe S/N	DAE S/N
Jul. 18, 2019	2450	51.50	13.3	53.20	3.30	737	3971	1431
Jul. 09, 2019	5250	80.70	7.81	78.10	-3.22	1019	3650	861
Jul. 17, 2019	5250	80.70	8.27	82.70	2.48	1019	3971	1431
Jul. 19, 2019	5250	80.70	8.47	84.70	4.96	1019	3971	1431
Jul. 09, 2019	5600	85.80	8.09	80.90	-5.71	1019	3650	861
Jul. 16, 2019	5600	85.80	8.29	82.90	-3.38	1019	3971	1431
Jul. 19, 2019	5600	85.80	8.93	89.30	4.08	1019	3971	1431
Jul. 17, 2019	5750	81.50	7.84	78.40	-3.80	1019	3971	1431
Jul. 19, 2019	5750	81.50	7.97	79.70	-2.21	1019	3971	1431

Note:

Comparing to the reference SAR value provided by SPEAG, the validation data should be within its specification of 10 %. The result indicates the system check can meet the variation criterion and the plots can be referred to Appendix A of this report.

FCC SAR Test Report

4.6 Maximum Output Power

4.6.1 Maximum Target Conducted Power

The maximum conducted average power (Unit: dBm) including tune-up tolerance is shown as below.

Tablet Mode

<WLAN 2.4G>

Mode	Channel	Frequency (MHz)	Tune-up Power (Ant-0)	Tune-up Power (Ant-1)	Tune-up Power (Ant-0 + Ant-1)
EUT without Power Reduction (P-Sensor NOT Triggered)					
802.11b	1	2412	17.0	17.0	17.0
	6	2437	17.0	17.0	17.0
	11	2462	17.0	17.0	17.0
802.11g	1	2412	18.0	18.0	18.0
	6	2437	18.0	18.0	18.0
	11	2462	18.0	18.0	18.0
802.11n (HT20)	1	2412	18.0	18.0	18.0
	6	2437	18.0	18.0	18.0
	11	2462	18.0	18.0	18.0
802.11n (HT40)	3	2422	15.5	15.5	15.5
	6	2437	15.5	15.5	15.5
	9	2452	15.5	15.5	15.5
EUT with Power Reduction (P-Sensor Triggered)					
802.11b	1	2412	10.0	10.0	12.5
	6	2437	10.0	10.0	12.5
	11	2462	10.0	10.0	12.5
802.11g	1	2412	10.0	10.0	12.5
	6	2437	10.0	10.0	12.5
	11	2462	10.0	10.0	12.5
802.11n (HT20)	1	2412	10.0	10.0	12.5
	6	2437	10.0	10.0	12.5
	11	2462	10.0	10.0	12.5
802.11n (HT40)	3	2422	10.0	10.0	12.5
	6	2437	10.0	10.0	12.5
	9	2452	10.0	10.0	12.5

FCC SAR Test Report

<WLAN 5.2G>

Mode	Channel	Frequency (MHz)	Tune-up Power (Ant-0)	Tune-up Power (Ant-1)	Tune-up Power (Ant-0 + Ant-1)
EUT without Power Reduction (P-Sensor NOT Triggered)					
802.11a	36	5180	18.0	18.0	21.0
	40	5200	18.0	18.0	21.0
	44	5220	18.0	18.0	21.0
	48	5240	18.0	18.0	21.0
802.11n (HT20)	36	5180	17.0	17.0	21.0
	40	5200	17.0	17.0	21.0
	44	5220	17.0	17.0	21.0
	48	5240	17.0	17.0	21.0
802.11n (HT40)	38	5190	18.0	18.0	18.0
	46	5230	18.0	18.0	18.0
802.11ac (VHT80)	42	5210	18.0	18.0	18.0
EUT with Power Reduction (P-Sensor Triggered)					
802.11a	36	5180	9.0	9.5	12.5
	40	5200	9.0	9.5	12.5
	44	5220	9.0	9.5	12.5
	48	5240	9.0	9.5	12.5
802.11n (HT20)	36	5180	9.0	9.5	12.5
	40	5200	9.0	9.5	12.5
	44	5220	9.0	9.5	12.5
	48	5240	9.0	9.5	12.5
802.11n (HT40)	38	5190	9.0	9.5	12.5
	46	5230	9.0	9.5	12.5
802.11ac (VHT80)	42	5210	9.0	9.5	12.5

<WLAN 5.3G>

Mode	Channel	Frequency (MHz)	Tune-up Power (Ant-0)	Tune-up Power (Ant-1)	Tune-up Power (Ant-0 + Ant-1)
EUT without Power Reduction (P-Sensor NOT Triggered)					
802.11a	52	5260	18.0	18.0	18.5
	56	5280	18.0	18.0	18.5
	60	5300	18.0	18.0	18.5
	64	5320	18.0	18.0	18.5
802.11n (HT20)	52	5260	17.0	17.0	18.0
	56	5280	17.0	17.0	18.0
	60	5300	17.0	17.0	18.0
	64	5320	17.0	17.0	18.0
802.11n (HT40)	54	5270	18.0	18.0	18.0
	62	5310	18.0	18.0	18.0
802.11ac (VHT80)	58	5290	18.0	18.0	18.0
EUT with Power Reduction (P-Sensor Triggered)					
802.11a	52	5260	9.0	9.5	12.5
	56	5280	9.0	9.5	12.5
	60	5300	9.0	9.5	12.5
	64	5320	9.0	9.5	12.5
802.11n (HT20)	52	5260	9.0	9.5	12.5
	56	5280	9.0	9.5	12.5
	60	5300	9.0	9.5	12.5
	64	5320	9.0	9.5	12.5
802.11n (HT40)	54	5270	9.0	9.5	12.5
	62	5310	9.0	9.5	12.5
802.11ac (VHT80)	58	5290	9.0	9.5	12.5

FCC SAR Test Report

<WLAN 5.6G>

Mode	Channel	Frequency (MHz)	Tune-up Power (Ant-0)	Tune-up Power (Ant-1)	Tune-up Power (Ant-0 + Ant-1)
EUT without Power Reduction (P-Sensor NOT Triggered)					
802.11a	100	5500	18.0	18.0	18.0
	116	5580	18.0	18.0	18.0
	120	5600	18.0	18.0	18.0
	124	5620	18.0	18.0	18.0
	132	5660	18.0	18.0	18.0
	140	5700	18.0	18.0	18.0
	144	5720	18.0	18.0	18.0
802.11n (HT20)	100	5500	17.0	17.0	17.0
	116	5580	17.0	17.0	17.0
	120	5600	17.0	17.0	17.0
	124	5620	17.0	17.0	17.0
	132	5660	17.0	17.0	17.0
	140	5700	17.0	17.0	17.0
	144	5720	17.0	17.0	17.0
802.11n (HT40)	102	5510	18.0	18.0	18.0
	110	5550	18.0	18.0	18.0
	118	5590	18.0	18.0	18.0
	126	5630	18.0	18.0	18.0
	134	5670	18.0	18.0	18.0
	142	5710	18.0	18.0	18.0
802.11ac (VHT80)	106	5530	18.0	18.0	18.0
	122	5610	18.0	18.0	18.0
	138	5690	18.0	18.0	18.0
EUT with Power Reduction (P-Sensor Triggered)					
802.11a	100	5500	8.0	9.0	12.0
	116	5580	8.0	9.0	12.0
	120	5600	8.0	9.0	12.0
	124	5620	8.0	9.0	12.0
	132	5660	8.0	9.0	12.0
	140	5700	8.0	9.0	12.0
	144	5720	8.0	9.0	12.0
802.11n (HT20)	100	5500	8.0	9.0	12.0
	116	5580	8.0	9.0	12.0
	120	5600	8.0	9.0	12.0
	124	5620	8.0	9.0	12.0
	132	5660	8.0	9.0	12.0
	140	5700	8.0	9.0	12.0
	144	5720	8.0	9.0	12.0
802.11n (HT40)	102	5510	8.0	9.0	12.0
	110	5550	8.0	9.0	12.0
	118	5590	8.0	9.0	12.0
	126	5630	8.0	9.0	12.0
	134	5670	8.0	9.0	12.0
	142	5710	8.0	9.0	12.0
802.11ac (VHT80)	106	5530	9.0	9.0	12.0
	122	5610	9.0	9.0	12.0
	138	5690	9.0	9.0	12.0

FCC SAR Test Report

<WLAN 5.8G>

Mode	Channel	Frequency (MHz)	Tune-up Power (Ant-0)	Tune-up Power (Ant-1)	Tune-up Power (Ant-0 + Ant-1)
EUT without Power Reduction (P-Sensor NOT Triggered)					
802.11a	149	5745	18.0	18.0	18.0
	153	5765	18.0	18.0	18.0
	157	5785	18.0	18.0	18.0
	161	5805	18.0	18.0	18.0
	165	5825	18.0	18.0	18.0
802.11n (HT20)	149	5745	18.0	18.0	18.0
	153	5765	18.0	18.0	18.0
	157	5785	18.0	18.0	18.0
	161	5805	18.0	18.0	18.0
	165	5825	18.0	18.0	18.0
802.11n (HT40)	151	5755	18.0	18.0	18.0
	159	5795	18.0	18.0	18.0
802.11ac (VHT80)	155	5775	18.0	18.0	18.0
EUT with Power Reduction (P-Sensor Triggered)					
802.11a	149	5745	8.5	9.0	11.5
	153	5765	8.5	9.0	11.5
	157	5785	8.5	9.0	11.5
	161	5805	8.5	9.0	11.5
	165	5825	8.5	9.0	11.5
802.11n (HT20)	149	5745	8.5	9.0	11.5
	153	5765	8.5	9.0	11.5
	157	5785	8.5	9.0	11.5
	161	5805	8.5	9.0	11.5
	165	5825	8.5	9.0	11.5
802.11n (HT40)	151	5755	8.5	9.0	11.5
	159	5795	8.5	9.0	11.5
802.11ac (VHT80)	155	5775	8.5	9.0	11.5

<Bluetooth>

Mode	Channel	Frequency (MHz)	Tune-up Power
Bluetooth EDR	0	2402	6.0
	39	2441	6.0
	78	2480	6.0
Bluetooth LE	0	2402	6.0
	19	2440	6.0
	39	2480	6.0

FCC SAR Test Report

Laptop Mode

<WLAN 2.4G>

Mode	Channel	Frequency (MHz)	Tune-up Power (Ant-0)	Tune-up Power (Ant-1)	Tune-up Power (Ant-0 + Ant-1)
802.11b	1	2412	10.0	10.0	12.5
	6	2437	10.0	10.0	12.5
	11	2462	10.0	10.0	12.5
802.11g	1	2412	10.0	10.0	12.5
	6	2437	10.0	10.0	12.5
	11	2462	10.0	10.0	12.5
802.11n (HT20)	1	2412	10.0	10.0	12.5
	6	2437	10.0	10.0	12.5
	11	2462	10.0	10.0	12.5
802.11n (HT40)	3	2422	10.0	10.0	12.5
	6	2437	10.0	10.0	12.5
	9	2452	10.0	10.0	12.5

<WLAN 5.2G>

Mode	Channel	Frequency (MHz)	Tune-up Power (Ant-0)	Tune-up Power (Ant-1)	Tune-up Power (Ant-0 + Ant-1)
802.11a	36	5180	9.0	9.5	12.5
	40	5200	9.0	9.5	12.5
	44	5220	9.0	9.5	12.5
	48	5240	9.0	9.5	12.5
802.11n (HT20)	36	5180	9.0	9.5	12.5
	40	5200	9.0	9.5	12.5
	44	5220	9.0	9.5	12.5
	48	5240	9.0	9.5	12.5
802.11n (HT40)	38	5190	9.0	9.5	12.5
	46	5230	9.0	9.5	12.5
802.11ac (VHT80)	42	5210	9.0	9.5	12.5

<WLAN 5.3G>

Mode	Channel	Frequency (MHz)	Tune-up Power (Ant-0)	Tune-up Power (Ant-1)	Tune-up Power (Ant-0 + Ant-1)
802.11a	52	5260	9.0	9.5	12.5
	56	5280	9.0	9.5	12.5
	60	5300	9.0	9.5	12.5
	64	5320	9.0	9.5	12.5
802.11n (HT20)	52	5260	9.0	9.5	12.5
	56	5280	9.0	9.5	12.5
	60	5300	9.0	9.5	12.5
	64	5320	9.0	9.5	12.5
802.11n (HT40)	54	5270	9.0	9.5	12.5
	62	5310	9.0	9.5	12.5
802.11ac (VHT80)	58	5290	9.0	9.5	12.5

FCC SAR Test Report

<WLAN 5.6G>

Mode	Channel	Frequency (MHz)	Tune-up Power (Ant-0)	Tune-up Power (Ant-1)	Tune-up Power (Ant-0 + Ant-1)
802.11a	100	5500	8.0	9.0	12.0
	116	5580	8.0	9.0	12.0
	120	5600	8.0	9.0	12.0
	124	5620	8.0	9.0	12.0
	132	5660	8.0	9.0	12.0
	140	5700	8.0	9.0	12.0
	144	5720	8.0	9.0	12.0
802.11n (HT20)	100	5500	8.0	9.0	12.0
	116	5580	8.0	9.0	12.0
	120	5600	8.0	9.0	12.0
	124	5620	8.0	9.0	12.0
	132	5660	8.0	9.0	12.0
	140	5700	8.0	9.0	12.0
	144	5720	8.0	9.0	12.0
802.11n (HT40)	102	5510	8.0	9.0	12.0
	110	5550	8.0	9.0	12.0
	118	5590	8.0	9.0	12.0
	126	5630	8.0	9.0	12.0
	134	5670	8.0	9.0	12.0
	142	5710	8.0	9.0	12.0
802.11ac (VHT80)	106	5530	9.0	9.0	12.0
	122	5610	9.0	9.0	12.0
	138	5690	9.0	9.0	12.0

<WLAN 5.8G>

Mode	Channel	Frequency (MHz)	Tune-up Power (Ant-0)	Tune-up Power (Ant-1)	Tune-up Power (Ant-0 + Ant-1)
802.11a	149	5745	8.5	9.0	11.5
	153	5765	8.5	9.0	11.5
	157	5785	8.5	9.0	11.5
	161	5805	8.5	9.0	11.5
	165	5825	8.5	9.0	11.5
802.11n (HT20)	149	5745	8.5	9.0	11.5
	153	5765	8.5	9.0	11.5
	157	5785	8.5	9.0	11.5
	161	5805	8.5	9.0	11.5
	165	5825	8.5	9.0	11.5
802.11n (HT40)	151	5755	8.5	9.0	11.5
	159	5795	8.5	9.0	11.5
802.11ac (VHT80)	155	5775	8.5	9.0	11.5

<Bluetooth>

Mode	Channel	Frequency (MHz)	Tune-up Power
Bluetooth EDR	0	2402	6.0
	39	2441	6.0
	78	2480	6.0
Bluetooth LE	0	2402	6.0
	19	2440	6.0
	39	2480	6.0

FCC SAR Test Report

4.6.2 Measured Conducted Power Result

The measuring conducted average power (Unit: dBm) is shown as below.

Tablet Mode

<WLAN 2.4G>

Mode	Channel	Frequency (MHz)	Average Power (Ant-0)	Average Power (Ant-1)	Average Power (Ant-0 + Ant-1)
EUT without Power Reduction (P-Sensor NOT Triggered)					
802.11b	1	2412	16.94	16.85	16.92
	6	2437	16.96	16.87	16.94
	11	2462	16.91	16.86	16.89
EUT with Power Reduction (P-Sensor Triggered)					
802.11b	1	2412	9.92	9.97	12.38
	6	2437	9.94	9.99	12.44
	11	2462	9.87	9.89	12.43

<WLAN 5.2G>

Mode	Channel	Frequency (MHz)	Average Power (Ant-0)	Average Power (Ant-1)	Average Power (Ant-0 + Ant-1)
EUT without Power Reduction (P-Sensor NOT Triggered)					
802.11a	36	5180	-	-	20.81
	40	5200	-	-	20.87
	44	5220	-	-	20.86
	48	5240	-	-	20.85

<WLAN 5.3G>

Mode	Channel	Frequency (MHz)	Average Power (Ant-0)	Average Power (Ant-1)	Average Power (Ant-0 + Ant-1)
EUT without Power Reduction (P-Sensor NOT Triggered)					
802.11ac (VHT80)	58	5290	17.88	17.92	-
EUT with Power Reduction (P-Sensor Triggered)					
802.11ac (VHT80)	58	5290	8.96	9.48	12.41

<WLAN 5.6G>

Mode	Channel	Frequency (MHz)	Average Power (Ant-0)	Average Power (Ant-1)	Average Power (Ant-0 + Ant-1)
EUT without Power Reduction (P-Sensor NOT Triggered)					
802.11ac (VHT80)	106	5530	17.93	17.91	17.95
	122	5610	17.88	17.86	17.92
	138	5690	17.91	17.81	17.93
EUT with Power Reduction (P-Sensor Triggered)					
802.11ac (VHT80)	106	5530	8.95	8.94	11.97
	122	5610	8.86	8.82	11.88
	138	5690	8.84	8.84	11.91

FCC SAR Test Report

<WLAN 5.8G>

Mode	Channel	Frequency (MHz)	Average Power (Ant-0)	Average Power (Ant-1)	Average Power (Ant-0 + Ant-1)
EUT without Power Reduction (P-Sensor NOT Triggered)					
802.11ac (VHT80)	155	5775	17.96	17.86	17.93
EUT with Power Reduction (P-Sensor Triggered)					
802.11ac (VHT80)	155	5775	8.44	8.92	11.44

<Bluetooth>

Mode	Channel	Frequency (MHz)	Average Power
Bluetooth EDR	0	2402	4.63
	39	2441	4.21
	78	2480	4.61
Bluetooth LE	0	2402	5.30
	19	2440	5.43
	39	2480	4.80

Laptop Mode

<WLAN 2.4G>

Mode	Channel	Frequency (MHz)	Average Power (Ant-0)	Average Power (Ant-1)	Average Power (Ant-0 + Ant-1)
802.11b	1	2412	9.92	9.97	12.38
	6	2437	9.94	9.99	12.44
	11	2462	9.87	9.89	12.43

<WLAN 5.3G>

Mode	Channel	Frequency (MHz)	Average Power (Ant-0)	Average Power (Ant-1)	Average Power (Ant-0 + Ant-1)
802.11ac (VHT80)	58	5290	8.96	9.48	12.41

<WLAN 5.6G>

Mode	Channel	Frequency (MHz)	Average Power (Ant-0)	Average Power (Ant-1)	Average Power (Ant-0 + Ant-1)
802.11ac (VHT80)	106	5530	8.95	8.94	11.97
	122	5610	8.86	8.82	11.88
	138	5690	8.84	8.84	11.91

<WLAN 5.8G>

Mode	Channel	Frequency (MHz)	Average Power (Ant-0)	Average Power (Ant-1)	Average Power (Ant-0 + Ant-1)
802.11ac (VHT80)	155	5775	8.44	8.92	11.44

<Bluetooth>

Mode	Channel	Frequency (MHz)	Average Power
Bluetooth EDR	0	2402	4.63
	39	2441	4.21
	78	2480	4.61
Bluetooth LE	0	2402	5.30
	19	2440	5.43
	39	2480	4.80

4.7 SAR Testing Results

4.7.1 SAR Test Reduction Considerations

<KDB 447498 D01, General RF Exposure Guidance>

Testing of other required channels within the operating mode of a frequency band is not required when the reported SAR for the mid-band or highest output power channel is:

- (1) ≤ 0.8 W/kg or 2.0 W/kg, for 1-g or 10-g respectively, when the transmission band is ≤ 100 MHz
- (2) ≤ 0.6 W/kg or 1.5 W/kg, for 1-g or 10-g respectively, when the transmission band is between 100 MHz and 200 MHz
- (3) ≤ 0.4 W/kg or 1.0 W/kg, for 1-g or 10-g respectively, when the transmission band is ≥ 200 MHz

When SAR is not measured at the maximum power level allowed for production units, the measured SAR will be scaled to the maximum tune-up tolerance limit to determine compliance. The scaling factor for the tune-up power is defined as maximum tune-up limit (mW) / measured conducted power (mW). The reported SAR would be calculated by measured SAR x tune-up power scaling factor.

The SAR has been measured with highest transmission duty factor supported by the test mode tools for WLAN and/or Bluetooth. When the transmission duty factor could not achieve 100%, the reported SAR will be scaled to 100% transmission duty factor to determine compliance at the maximum tune-up power. The scaling factor for the duty factor is defined as 100% / transmission duty cycle (%). The reported SAR would be calculated by measured SAR x tune-up power scaling factor x duty cycle scaling factor.

<KDB 248227 D01, SAR Guidance for Wi-Fi Transmitters>

- (1) For handsets operating next to ear, hotspot mode or mini-tablet configurations, the initial test position procedures were applied. The test position with the highest extrapolated peak SAR will be used as the initial test position. When the reported SAR of initial test position is ≤ 0.4 W/kg, SAR testing for remaining test positions is not required. Otherwise, SAR is evaluated at the subsequent highest peak SAR positions until the reported SAR result is ≤ 0.8 W/kg or all test positions are measured.
- (2) For WLAN 2.4 GHz, the highest measured maximum output power channel for DSSS was selected for SAR measurement. When the reported SAR is ≤ 0.8 W/kg, no further SAR testing is required. Otherwise, SAR is evaluated at the next highest measured output power channel. When any reported SAR is > 1.2 W/kg, SAR is required for the third channel. For OFDM modes (802.11g/n), SAR is not required when the highest reported SAR for DSSS is adjusted by the ratio of OFDM to DSSS specified maximum output power and it is ≤ 1.2 W/kg.
- (3) For WLAN 5 GHz, the initial test configuration was selected according to the transmission mode with the highest maximum output power. When the reported SAR of initial test configuration is > 0.8 W/kg, SAR is required for the subsequent highest measured output power channel until the reported SAR result is ≤ 1.2 W/kg or all required channels are measured. For other transmission modes, SAR is not required when the highest reported SAR for initial test configuration is adjusted by the ratio of subsequent test configuration to initial test configuration specified maximum output power and it is ≤ 1.2 W/kg.
- (4) For WLAN MIMO mode, the power-based standalone SAR test exclusion or the sum of SAR provision in KDB 447498 to determine simultaneous transmission SAR test exclusion should be applied. Otherwise, SAR for MIMO mode will be measured with all applicable antennas transmitting simultaneously at the specified maximum output power of MIMO operation.

FCC SAR Test Report

4.7.2 SAR Results for Body Exposure Condition

Tablet Mode

Plot No.	Band	Mode	Test Position	Separation Distance (cm)	Ch.	Ant Status	P-Sensor	Duty Cycle	Crest Factor	Max. Tune-up Power (dBm)	Measured Conducted Power (dBm)	Scaling Factor	Power Drift (dB)	Measured SAR-1g (W/kg)	Scaled SAR-1g (W/kg)
01	WLAN2.4G	802.11b	Rear Face	25	6	Ant 0	w/o	100.00	1.00	17.0	16.96	1.01	-0.09	0.087	0.09
	WLAN2.4G	802.11b	Left Side	20	6	Ant 0	w/o	100.00	1.00	17.0	16.96	1.01	0.00	<0.001	0.00
	WLAN2.4G	802.11b	Top Side	13	6	Ant 0	w/o	100.00	1.00	17.0	16.96	1.01	0.07	0.187	0.19
	WLAN2.4G	802.11b	Rear Face	0	6	Ant 0	w/	100.00	1.00	10.0	9.94	1.01	-0.04	0.435	0.44
	WLAN2.4G	802.11b	Left Side	0	6	Ant 0	w/	100.00	1.00	10.0	9.94	1.01	0.00	0.072	0.07
	WLAN2.4G	802.11b	Top Side	0	6	Ant 0	w/	100.00	1.00	10.0	9.94	1.01	0.00	0.247	0.25
	WLAN2.4G	802.11b	Rear Face	25	6	Ant 1	w/o	100.00	1.00	17.0	16.87	1.03	-0.06	0.029	0.03
	WLAN2.4G	802.11b	Right Side	0	6	Ant 1	w/o	100.00	1.00	17.0	16.87	1.03	0.00	<0.001	0.00
	WLAN2.4G	802.11b	Top Side	13	6	Ant 1	w/o	100.00	1.00	17.0	16.87	1.03	-0.09	0.094	0.10
	WLAN2.4G	802.11b	Rear Face	0	6	Ant 1	w/	100.00	1.00	10.0	9.99	1.00	0.01	0.107	0.11
	WLAN2.4G	802.11b	Top Side	0	6	Ant 1	w/	100.00	1.00	10.0	9.99	1.00	0.00	0.052	0.05
	WLAN2.4G	802.11b	Rear Face	25	6	Ant 0+1	w/o	100.00	1.00	17.0	16.94	1.01	-0.15	0.033	0.03
	WLAN2.4G	802.11b	Left Side	20	6	Ant 0+1	w/o	100.00	1.00	17.0	16.94	1.01	0.00	<0.001	0.00
	WLAN2.4G	802.11b	Right Side	0	6	Ant 0+1	w/o	100.00	1.00	17.0	16.94	1.01	0.00	<0.001	0.00
	WLAN2.4G	802.11b	Top Side	13	6	Ant 0+1	w/o	100.00	1.00	17.0	16.94	1.01	0.12	0.099	0.10
	WLAN2.4G	802.11b	Rear Face	0	6	Ant 0+1	w/	100.00	1.00	12.5	12.44	1.01	-0.03	0.338	0.34
	WLAN2.4G	802.11b	Left Side	0	6	Ant 0+1	w/	100.00	1.00	12.5	12.44	1.01	0.00	<0.001	0.00
	WLAN2.4G	802.11b	Top Side	0	6	Ant 0+1	w/	100.00	1.00	12.5	12.44	1.01	0.14	0.21	0.21
	WLAN2.4G	802.11b	Rear Face	0	1	Ant 0	w/	100.00	1.00	10.0	9.92	1.02	-0.03	0.426	0.43
	WLAN2.4G	802.11b	Rear Face	0	11	Ant 0	w/	100.00	1.00	10.0	9.87	1.03	0.13	0.42	0.43
02	WLAN5.3G	802.11ac VHT80	Rear Face	25	58	Ant 0	w/o	100.00	1.00	18.0	17.88	1.03	-0.06	0.178	0.18
	WLAN5.3G	802.11ac VHT80	Left Side	20	58	Ant 0	w/o	100.00	1.00	18.0	17.88	1.03	0.00	<0.001	0.00
	WLAN5.3G	802.11ac VHT80	Top Side	13	58	Ant 0	w/o	100.00	1.00	18.0	17.88	1.03	-0.09	0.39	0.40
	WLAN5.3G	802.11ac VHT80	Rear Face	0	58	Ant 0	w/	100.00	1.00	9.0	8.96	1.01	0.03	0.644	0.65
	WLAN5.3G	802.11ac VHT80	Left Side	0	58	Ant 0	w/	100.00	1.00	9.0	8.96	1.01	0.00	<0.001	0.00
	WLAN5.3G	802.11ac VHT80	Top Side	0	58	Ant 0	w/	100.00	1.00	9.0	8.96	1.01	-0.02	0.270	0.27
	WLAN5.3G	802.11ac VHT80	Rear Face	25	58	Ant 1	w/o	100.00	1.00	18.0	17.92	1.02	-0.15	0.258	0.26
	WLAN5.3G	802.11ac VHT80	Right Side	0	58	Ant 1	w/o	100.00	1.00	18.0	17.92	1.02	0.00	<0.001	0.00
	WLAN5.3G	802.11ac VHT80	Top Side	13	58	Ant 1	w/o	100.00	1.00	18.0	17.92	1.02	0.13	0.195	0.20
	WLAN5.3G	802.11ac VHT80	Rear Face	0	58	Ant 1	w/	100.00	1.00	9.5	9.48	1.00	0.01	0.718	0.72
	WLAN5.3G	802.11ac VHT80	Top Side	0	58	Ant 1	w/	100.00	1.00	9.5	9.48	1.00	0.14	0.23	0.23
	WLAN5.2G	802.11a	Rear Face	25	40	Ant 0+1	w/o	100.00	1.00	21.0	20.87	1.03	0.12	0.148	0.15
	WLAN5.2G	802.11a	Left Side	20	40	Ant 0+1	w/o	100.00	1.00	21.0	20.87	1.03	0.00	<0.001	0.00
	WLAN5.2G	802.11a	Right Side	0	40	Ant 0+1	w/o	100.00	1.00	21.0	20.87	1.03	0.00	<0.001	0.00
	WLAN5.2G	802.11a	Top Side	13	40	Ant 0+1	w/o	100.00	1.00	21.0	20.87	1.03	-0.08	0.302	0.31
	WLAN5.2G	802.11a	Bottom Side	0	40	Ant 0+1	w/o	100.00	1.00	21.0	20.87	1.03	0.00	0	0.00
	WLAN5.3G	802.11ac VHT80	Rear Face	0	58	Ant 0+1	w/	100.00	1.00	12.5	12.41	1.02	-0.03	0.732	0.75
	WLAN5.3G	802.11ac VHT80	Left Side	0	58	Ant 0+1	w/	100.00	1.00	12.5	12.41	1.02	0.00	<0.001	0.00
	WLAN5.3G	802.11ac VHT80	Top Side	0	58	Ant 0+1	w/	100.00	1.00	12.5	12.41	1.02	0.11	0.377	0.38

Note: The "< 0.001" means there is no SAR value or the SAR is too low to be measured.

FCC SAR Test Report

Plot No.	Band	Mode	Test Position	Separation Distance (cm)	Ch.	Ant Status	P-Sensor	Duty Cycle	Crest Factor	Max. Tune-up Power (dBm)	Measured Conducted Power (dBm)	Scaling Factor	Power Drift (dB)	Measured SAR-1g (W/kg)	Scaled SAR-1g (W/kg)
	WLAN5.6G	802.11ac VHT80	Rear Face	25	106	Ant 0	w/o	100.00	1.00	18.0	17.93	1.02	0.01	0.242	0.25
	WLAN5.6G	802.11ac VHT80	Left Side	20	106	Ant 0	w/o	100.00	1.00	18.0	17.93	1.02	0.00	<0.001	0.00
	WLAN5.6G	802.11ac VHT80	Top Side	13	106	Ant 0	w/o	100.00	1.00	18.0	17.93	1.02	0.05	0.393	0.40
	WLAN5.6G	802.11ac VHT80	Rear Face	0	106	Ant 0	w/	100.00	1.00	9.0	8.95	1.01	0.01	0.337	0.34
	WLAN5.6G	802.11ac VHT80	Left Side	0	106	Ant 0	w/	100.00	1.00	9.0	8.95	1.01	0.00	<0.001	0.00
	WLAN5.6G	802.11ac VHT80	Top Side	0	106	Ant 0	w/	100.00	1.00	9.0	8.95	1.01	-0.01	0.186	0.19
	WLAN5.6G	802.11ac VHT80	Rear Face	25	106	Ant 1	w/o	100.00	1.00	18.0	17.91	1.02	-0.02	0.151	0.15
	WLAN5.6G	802.11ac VHT80	Right Side	0	106	Ant 1	w/o	100.00	1.00	18.0	17.91	1.02	0.00	<0.001	0.00
	WLAN5.6G	802.11ac VHT80	Top Side	13	106	Ant 1	w/o	100.00	1.00	18.0	17.91	1.02	-0.04	0.129	0.13
03	WLAN5.6G	802.11ac VHT80	Rear Face	0	106	Ant 1	w/	100.00	1.00	9.0	8.94	1.01	-0.02	0.628	0.63
	WLAN5.6G	802.11ac VHT80	Top Side	0	106	Ant 1	w/	100.00	1.00	9.0	8.94	1.01	0.17	0.264	0.27
	WLAN5.6G	802.11ac VHT80	Rear Face	25	106	Ant 0+1	w/o	100.00	1.00	18.0	17.95	1.01	0.02	0.14	0.14
	WLAN5.6G	802.11ac VHT80	Left Side	20	106	Ant 0+1	w/o	100.00	1.00	18.0	17.95	1.01	0.00	<0.001	0.00
	WLAN5.6G	802.11ac VHT80	Right Side	0	106	Ant 0+1	w/o	100.00	1.00	18.0	17.95	1.01	0.00	<0.001	0.00
	WLAN5.6G	802.11ac VHT80	Top Side	13	106	Ant 0+1	w/o	100.00	1.00	18.0	17.95	1.01	0.11	0.276	0.28
	WLAN5.6G	802.11ac VHT80	Rear Face	0	106	Ant 0+1	w/	100.00	1.00	12.0	11.97	1.01	-0.14	0.546	0.55
	WLAN5.6G	802.11ac VHT80	Left Side	0	106	Ant 0+1	w/	100.00	1.00	12.0	11.97	1.01	0.00	<0.001	0.00
	WLAN5.6G	802.11ac VHT80	Top Side	0	106	Ant 0+1	w/	100.00	1.00	12.0	11.97	1.01	0.01	0.319	0.32
	WLAN5.6G	802.11ac VHT80	Rear Face	0	122	Ant 1	w/	100.00	1.00	9.0	8.82	1.04	-0.01	0.6	0.62
	WLAN5.6G	802.11ac VHT80	Rear Face	0	138	Ant 1	w/	100.00	1.00	9.0	8.84	1.04	0.09	0.533	0.55
	WLAN5.8G	802.11ac VHT80	Rear Face	25	155	Ant 0	w/o	100.00	1.00	18.0	17.96	1.01	0.03	0.128	0.13
	WLAN5.8G	802.11ac VHT80	Left Side	20	155	Ant 0	w/o	100.00	1.00	18.0	17.96	1.01	0.00	<0.001	0.00
	WLAN5.8G	802.11ac VHT80	Top Side	13	155	Ant 0	w/o	100.00	1.00	18.0	17.96	1.01	0.03	0.205	0.21
	WLAN5.8G	802.11ac VHT80	Rear Face	0	155	Ant 0	w/	100.00	1.00	8.5	8.44	1.01	0.06	0.223	0.23
	WLAN5.8G	802.11ac VHT80	Left Side	0	155	Ant 0	w/	100.00	1.00	8.5	8.44	1.01	0.00	<0.001	0.00
	WLAN5.8G	802.11ac VHT80	Top Side	0	155	Ant 0	w/	100.00	1.00	8.5	8.44	1.01	0.11	0.05	0.05
	WLAN5.8G	802.11ac VHT80	Rear Face	25	155	Ant 1	w/o	100.00	1.00	18.0	17.86	1.03	0.01	0.126	0.13
	WLAN5.8G	802.11ac VHT80	Right Side	0	155	Ant 1	w/o	100.00	1.00	18.0	17.86	1.03	0.00	<0.001	0.00
	WLAN5.8G	802.11ac VHT80	Top Side	13	155	Ant 1	w/o	100.00	1.00	18.0	17.86	1.03	0.03	0.121	0.12
04	WLAN5.8G	802.11ac VHT80	Rear Face	0	155	Ant 1	w/	100.00	1.00	9.0	8.92	1.02	-0.16	0.637	0.65
	WLAN5.8G	802.11ac VHT80	Top Side	0	155	Ant 1	w/	100.00	1.00	9.0	8.92	1.02	0.01	0.242	0.25
	WLAN5.8G	802.11ac VHT80	Rear Face	25	155	Ant 0+1	w/o	100.00	1.00	18.0	17.93	1.02	-0.09	0.08	0.08
	WLAN5.8G	802.11ac VHT80	Left Side	20	155	Ant 0+1	w/o	100.00	1.00	18.0	17.93	1.02	0.00	<0.001	0.00
	WLAN5.8G	802.11ac VHT80	Right Side	0	155	Ant 0+1	w/o	100.00	1.00	18.0	17.93	1.02	0.00	<0.001	0.00
	WLAN5.8G	802.11ac VHT80	Top Side	13	155	Ant 0+1	w/o	100.00	1.00	18.0	17.93	1.02	0.11	0.118	0.12
	WLAN5.8G	802.11ac VHT80	Rear Face	0	155	Ant 0+1	w/	100.00	1.00	11.5	11.44	1.01	0.06	0.506	0.51
	WLAN5.8G	802.11ac VHT80	Left Side	0	155	Ant 0+1	w/	100.00	1.00	11.5	11.44	1.01	0.00	<0.001	0.00
	WLAN5.8G	802.11ac VHT80	Top Side	0	155	Ant 0+1	w/	100.00	1.00	11.5	11.44	1.01	0.08	0.105	0.11

Note: The "< 0.001" means there is no SAR value or the SAR is too low to be measured.

FCC SAR Test Report

Plot No.	Band	Mode	Test Position	Separation Distance (cm)	Ch.	Ant Status	P-Sensor	Duty Cycle	Crest Factor	Max. Tune-up Power (dBm)	Measured Conducted Power (dBm)	Scaling Factor	Power Drift (dB)	Measured SAR-1g (W/kg)	Scaled SAR-1g (W/kg)
05	BT	LE	Rear Face	0	19	Ant 1	-	85.60	1.17	6.0	5.43	1.14	0.17	0.023	0.03
	BT	LE	Right Side	0	19	Ant 1	-	85.60	1.17	6.0	5.43	1.14	0.00	<0.001	0.00
	BT	LE	Top Side	0	19	Ant 1	-	85.60	1.17	6.0	5.43	1.14	0.00	<0.001	0.00
	BT	LE	Rear Face	0	0	Ant 1	-	85.60	1.17	6.0	5.30	1.17	0.13	0.013	0.02
	BT	LE	Rear Face	0	39	Ant 1	-	85.60	1.17	6.0	4.80	1.32	0.03	0.016	0.02

Note: The "< 0.001" means there is no SAR value or the SAR is too low to be measured.

Laptop Mode

Plot No.	Band	Mode	Test Position	Separation Distance (cm)	Ch.	Ant Status	P-Sensor	Duty Cycle	Crest Factor	Max. Tune-up Power (dBm)	Measured Conducted Power (dBm)	Scaling Factor	Power Drift (dB)	Measured SAR-1g (W/kg)	Scaled SAR-1g (W/kg)
06	WLAN2.4G	802.11b	Bottom	0	6	Ant 0	w/	100.00	1.00	10.0	9.94	1.01	-0.09	0.452	0.46
	WLAN2.4G	802.11b	Bottom	0	6	Ant 1	w/	100.00	1.00	10.0	9.99	1.00	-0.02	0.103	0.10
	WLAN2.4G	802.11b	Bottom	0	6	Ant 0+1	w/	100.00	1.00	12.5	12.44	1.01	0.05	0.399	0.40
	WLAN2.4G	802.11b	Bottom	0	1	Ant 0	w/	100.00	1.00	10.0	9.92	1.02	-0.02	0.441	0.45
	WLAN2.4G	802.11b	Bottom	0	11	Ant 0	w/	100.00	1.00	10.0	9.87	1.03	0.01	0.424	0.44
	WLAN5.3G	802.11ac VHT80	Bottom	0	58	Ant 0	w/	100.00	1.00	9.0	8.96	1.01	0.02	0.156	0.16
	WLAN5.3G	802.11ac VHT80	Bottom	0	58	Ant 1	w/	100.00	1.00	9.5	9.48	1.00	0.01	0.166	0.17
07	WLAN5.3G	802.11ac VHT80	Bottom	0	58	Ant 0+1	w/	100.00	1.00	12.5	12.41	1.02	-0.11	0.205	0.21
	WLAN5.6G	802.11ac VHT80	Bottom	0	106	Ant 0	w/	100.00	1.00	9.0	8.95	1.01	0.01	0.067	0.07
08	WLAN5.6G	802.11ac VHT80	Bottom	0	106	Ant 1	w/	100.00	1.00	9.0	8.94	1.01	-0.17	0.192	0.19
	WLAN5.6G	802.11ac VHT80	Bottom	0	106	Ant 0+1	w/	100.00	1.00	12.0	11.97	1.01	-0.01	0.177	0.18
	WLAN5.6G	802.11ac VHT80	Bottom	0	122	Ant 1	w/	100.00	1.00	9.0	8.82	1.04	-0.02	0.111	0.12
	WLAN5.6G	802.11ac VHT80	Bottom	0	138	Ant 1	w/	100.00	1.00	9.0	8.84	1.04	0.05	0.078	0.08
	WLAN5.8G	802.11ac VHT80	Bottom	0	155	Ant 0	w/	100.00	1.00	8.5	8.44	1.01	0.07	0.056	0.06
09	WLAN5.8G	802.11ac VHT80	Bottom	0	155	Ant 1	w/	100.00	1.00	9.0	8.92	1.02	-0.09	0.152	0.16
	WLAN5.8G	802.11ac VHT80	Bottom	0	155	Ant 0+1	w/	100.00	1.00	11.5	11.44	1.01	-0.11	0.144	0.15
	BT	LE	Bottom	0	0	Ant 1	-	85.60	1.17	6.0	5.30	1.17	-0.01	0.017	0.02
10	BT	LE	Bottom	0	19	Ant 1	-	85.60	1.17	6.0	5.43	1.14	-0.16	0.020	0.03
	BT	LE	Bottom	0	39	Ant 1	-	85.60	1.17	6.0	4.80	1.32	-0.01	0.016	0.02

Note: The "< 0.001" means there is no SAR value or the SAR is too low to be measured.

4.7.3 SAR Measurement Variability

According to KDB 865664 D01, SAR measurement variability was assessed for each frequency band, which is determined by the SAR probe calibration point and tissue-equivalent medium used for the device measurements. When both head and body tissue-equivalent media are required for SAR measurements in a frequency band, the variability measurement procedures should be applied to the tissue medium with the highest measured SAR, using the highest measured SAR configuration for that tissue-equivalent medium. Alternatively, if the highest measured SAR for both head and body tissue-equivalent media are ≤ 1.45 W/kg and the ratio of these highest SAR values, i.e., largest divided by smallest value, is ≤ 1.10 , the highest SAR configuration for either head or body tissue-equivalent medium may be used to perform the repeated measurement. These additional measurements are repeated after the completion of all measurements requiring the same head or body tissue-equivalent medium in a frequency band. The test device should be returned to ambient conditions (normal room temperature) with the battery fully charged before it is re-mounted on the device holder for the repeated measurement(s) to minimize any unexpected variations in the repeated results.

Since all the measured SAR are less than 0.8 W/kg, the repeated measurement is not required.

FCC SAR Test Report

4.7.4 Simultaneous Multi-band Transmission Evaluation

<Possibilities of Simultaneous Transmission>

The simultaneous transmission possibilities for this device are listed as below.

Simultaneous TX Combination	Capable Transmit Configurations	Body Exposure Condition
1	WLAN2.4G Ant0+BT Ant1	Yes
2	WLAN5G Ant0+BT Ant1	Yes

Note: The WLAN 2.4G and WLAN 5G cannot transmit simultaneously.

<Estimated SAR Calculation>

According to KDB 447498 D01, when standalone SAR test exclusion applies to an antenna that transmits simultaneously with other antennas, the standalone SAR was estimated according to following formula to result in substantially conservative SAR values of ≤ 0.4 W/kg to determine simultaneous transmission SAR test exclusion.

$$\text{Estimated SAR} = \frac{\text{Max. Tune up Power}_{(\text{mW})}}{\text{Min. Test Separation Distance}_{(\text{mm})}} \times \frac{\sqrt{f_{(\text{GHz})}}}{7.5}$$

If the minimum test separation distance is < 5 mm, a distance of 5 mm is used for estimated SAR calculation. When the test separation distance is > 50 mm, the 0.4 W/kg is used for SAR-1g.

Mode / Band	Frequency (GHz)	Max. Tune-up Power (dBm)	Test Position	Separation Distance (mm)	Estimated SAR (W/kg)
WLAN (DTS)	2.462	18.0	Body	5	0.40
WLAN (NII)	5.2	21.0	Body	5	0.40
WLAN (NII)	5.3	18.5	Body	5	0.40
WLAN (NII)	5.6	18.0	Body	5	0.40
WLAN (NII)	5.8	18.0	Body	5	0.40
BT (DSS)	2.48	6.0	Body	5	0.17

Note:

1. The separation distance is determined from the outer housing of the EUT to the user.
2. When standalone SAR testing is not required, an estimated SAR can be applied to determine simultaneous transmission SAR test exclusion.

FCC SAR Test Report

<SAR Summation Analysis>

Simultaneous transmission SAR test exclusion is determined for each operating configuration and exposure condition according to the reported standalone SAR of each applicable simultaneous transmitting antenna. When the sum of SAR_{1g} of all simultaneously transmitting antennas in an operating mode and exposure condition combination is within the SAR limit (SAR_{1g} 1.6 W/kg), the simultaneous transmission SAR is not required. When the sum of SAR_{1g} is greater than the SAR limit (SAR_{1g} 1.6 W/kg), SAR test exclusion is determined by the SPLSR.

Mode	Position	1	2	3	1+3	2+3
		WLAN 2.4GHz Ant 0	WLAN 5GHz Ant 0	BT Ant 1	Summing result 1g SAR W/kg	Summing result 1g SAR W/kg
		1g SAR W/kg	1g SAR W/kg	1g SAR W/kg		
Tablet	Rear Face	0.44	0.65	0.03	0.47	0.68
	Left Side	0.07	0.00	0.17	0.24	0.17
	Right Side	0.40	0.40	0.00	0.40	0.40
	Top Side	0.25	0.40	0.00	0.25	0.40
	Bottom Side	0.40	0.40	0.17	0.57	0.57

Mode	Position	1	2	3	1+3	2+3
		WLAN 2.4GHz Ant 0	WLAN 5GHz Ant 0	BT Ant 1	Summing result 1g SAR W/kg	Summing result 1g SAR W/kg
		1g SAR W/kg	1g SAR W/kg	1g SAR W/kg		
Laptop	Bottom	0.46	0.16	0.03	0.49	0.19

Test Engineer : James Chu, and Chienlun Huang

FCC SAR Test Report

5. Calibration of Test Equipment

Equipment	Manufacturer	Model	SN	Cal. Date	Cal. Interval
System Validation Dipole	SPEAG	D2450V2	737	Aug. 24, 2018	1 Year
System Validation Dipole	SPEAG	D5GHzV2	1019	Mar. 21, 2019	1 Year
Dosimetric E-Field Probe	SPEAG	EX3DV4	3650	May. 20, 2019	1 Year
Dosimetric E-Field Probe	SPEAG	EX3DV4	3971	Mar. 29, 2019	1 Year
Data Acquisition Electronics	SPEAG	DAE4	861	May. 08, 2019	1 Year
Data Acquisition Electronics	SPEAG	DAE4	1431	Mar. 25, 2019	1 Year
Spectrum Analyzer	R&S	FSL6	102006	Mar. 26, 2019	1 Year
ENA Series Network Analyzer	Agilent	E5071C	MY46214281	Jun. 17, 2019	1 Year
MXG Analog Signal Generator	Agilent	N5181A	MY50143868	Jun. 27, 2019	1 Year
Power Meter	Anritsu	ML2495A	1218009	Jun. 28, 2019	1 Year
Power Sensor	Anritsu	MA2411B	1207252	Jun. 28, 2019	1 Year
Thermometer	YFE	YF-160A	130504591	Mar. 22, 2019	1 Year
Thermometer	YFE	YF-160A	150601219	Apr. 22, 2019	1 Year

6. Measurement Uncertainty

According to KDB 865664 D01, SAR measurement uncertainty analysis is required in SAR reports only when the highest measured SAR in a frequency band is ≥ 1.5 W/kg for 1-g SAR, and ≥ 3.75 W/kg for 10-g SAR. The procedures described in IEEE Std 1528-2013 should be applied. The expanded SAR measurement uncertainty must be $\leq 30\%$, for a confidence interval of $k = 2$. When the highest measured SAR within a frequency band is < 1.5 W/kg for 1-g and < 3.75 W/kg for 10-g, the extensive SAR measurement uncertainty analysis described in IEEE Std 1528-2013 is not required in SAR reports submitted for equipment approval. Hence, the measurement uncertainty analysis is not required in this SAR report because the test result met the condition.

FCC SAR Test Report

Source of Uncertainty	Uncertainty (± %)	Probability Distribution	Divisor	Ci (1g)	Ci (10g)	Standard Uncertainty (± %, 1g)	Standard Uncertainty (± %, 10g)	Vi
Measurement System								
Probe Calibration	6.55	Normal	1	1	1	6.55	6.55	∞
Axial Isotropy	4.7	Rectangular	√3	0.7	0.7	1.9	1.9	∞
Hemispherical Isotropy	9.6	Rectangular	√3	0.7	0.7	3.9	3.9	∞
Boundary Effect	2.0	Rectangular	√3	1	1	1.2	1.2	∞
Linearity	4.7	Rectangular	√3	1	1	2.7	2.7	∞
Detection Limits	0.25	Rectangular	√3	1	1	0.14	0.14	∞
Probe Modulation Response	3.5	Rectangular	√3	1	1	2.0	2.0	∞
Readout Electronics	0.3	Normal	1	1	1	0.3	0.3	∞
Response Time	0.0	Rectangular	√3	1	1	0.0	0.0	∞
Integration Time	1.7	Rectangular	√3	1	1	1.0	1.0	∞
RF Ambient Conditions – Noise	3.0	Rectangular	√3	1	1	1.7	1.7	∞
RF Ambient Conditions – Reflections	3.0	Rectangular	√3	1	1	1.7	1.7	∞
Probe Positioner Mechanical Tolerance	0.4	Rectangular	√3	1	1	0.2	0.2	∞
Probe Positioning with Respect to Phantom	6.7	Rectangular	√3	1	1	3.9	3.9	∞
Post-processing	4.0	Rectangular	√3	1	1	2.3	2.3	∞
Test Sample Related								
Test Sample Positioning	3.68 / 1.73	Normal	1	1	1	3.7	1.7	29
Device Holder Uncertainty	2.55 / 2.76	Normal	1	1	1	2.6	2.8	7
Power Drift of Measurement	5.0	Rectangular	√3	1	1	2.9	2.9	∞
Power Scaling	0.0	Rectangular	√3	1	1	0.0	0.0	∞
Phantom and Setup								
Phantom Uncertainty (Shape and Thickness Tolerances)	7.6	Rectangular	√3	1	1	4.4	4.4	∞
Liquid Conductivity (Temperature Uncertainty)	2.58	Rectangular	√3	0.78	0.71	1.2	1.1	∞
Liquid Conductivity (Measured)	2.95	Normal	1	0.78	0.71	2.3	2.1	61
Liquid Permittivity (Temperature Uncertainty)	1.97	Rectangular	√3	0.23	0.26	0.3	0.3	∞
Liquid Permittivity (Measured)	3.04	Normal	1	0.23	0.26	0.7	0.8	47
Combined Standard Uncertainty						± 12.5 %	± 12.1 %	
Expanded Uncertainty (K=2)						± 25.0 %	± 24.2 %	

Body SAR Uncertainty Budget for Frequency Range of 3 GHz to 6 GHz

FCC SAR Test Report

7. Information of the Testing Laboratories

We, Bureau Veritas Consumer Products Services (H.K.) Ltd., Taoyuan Branch, were founded in 1988 to provide our best service in EMC, Radio, Telecom and Safety consultation. Our laboratories are accredited and approved according to ISO/IEC 17025.

If you have any comments, please feel free to contact us at the following:

Taiwan HwaYa EMC/RF/Safety/Telecom Lab:

Add: No. 19, Hwa Ya 2nd Rd, Wen Hwa Vil., Kwei Shan Hsiang, Taoyuan Hsien 333, Taiwan, R.O.C.

Tel: 886-3-318-3232

Fax: 886-3-327-0892

Taiwan LinKou EMC/RF Lab:

Add: No. 47-2, 14th Ling, Chia Pau Vil., Linkou Dist., New Taipei City 244, Taiwan, R.O.C.

Tel: 886-2-2605-2180

Fax: 886-2-2605-1924

Taiwan HsinChu EMC/RF Lab:

Add: E-2, No.1, Li Hsin 1st Road, Hsinchu Science Park, Hsinchu City 30078, Taiwan, R.O.C.

Tel: 886-3-593-5343

Fax: 886-3-593-5342

Email: service.adt@tw.bureauveritas.com

Web Site: www.bureauveritas-adt.com

The road map of all our labs can be found in our web site also.

---END---

Appendix A. SAR Plots of System Verification

The plots for system verification with largest deviation for each SAR system combination are shown as follows.

System Check_H2450_190718

DUT: Dipole 2450 MHz; Type: D2450V2; SN: 737

Communication System: CW; Frequency: 2450 MHz; Duty Cycle: 1:1

Medium: H19T27N1_0718 Medium parameters used: $f = 2450$ MHz; $\sigma = 1.868$ S/m; $\epsilon_r = 37.896$; $\rho = 1000$ kg/m³

Ambient Temperature : 23.7 °C ; Liquid Temperature : 23.4 °C

DASY5 Configuration:

- Probe: EX3DV4 - SN3971; ConvF(7.65, 7.65, 7.65); Calibrated: 2019/03/29
- Sensor-Surface: 1.4mm (Mechanical Surface Detection)
- Electronics: DAE4 Sn1431; Calibrated: 2019/03/25
- Phantom: ELI Phantom_1043; Type: QDOVA
- Measurement SW: DASY52, Version 52.10 (2); SEMCAD X Version 14.6.12 (7470)

Pin=250mW/Area Scan (81x81x1): Interpolated grid: dx=1.200 mm, dy=1.200 mm

Maximum value of SAR (interpolated) = 22.3 W/kg

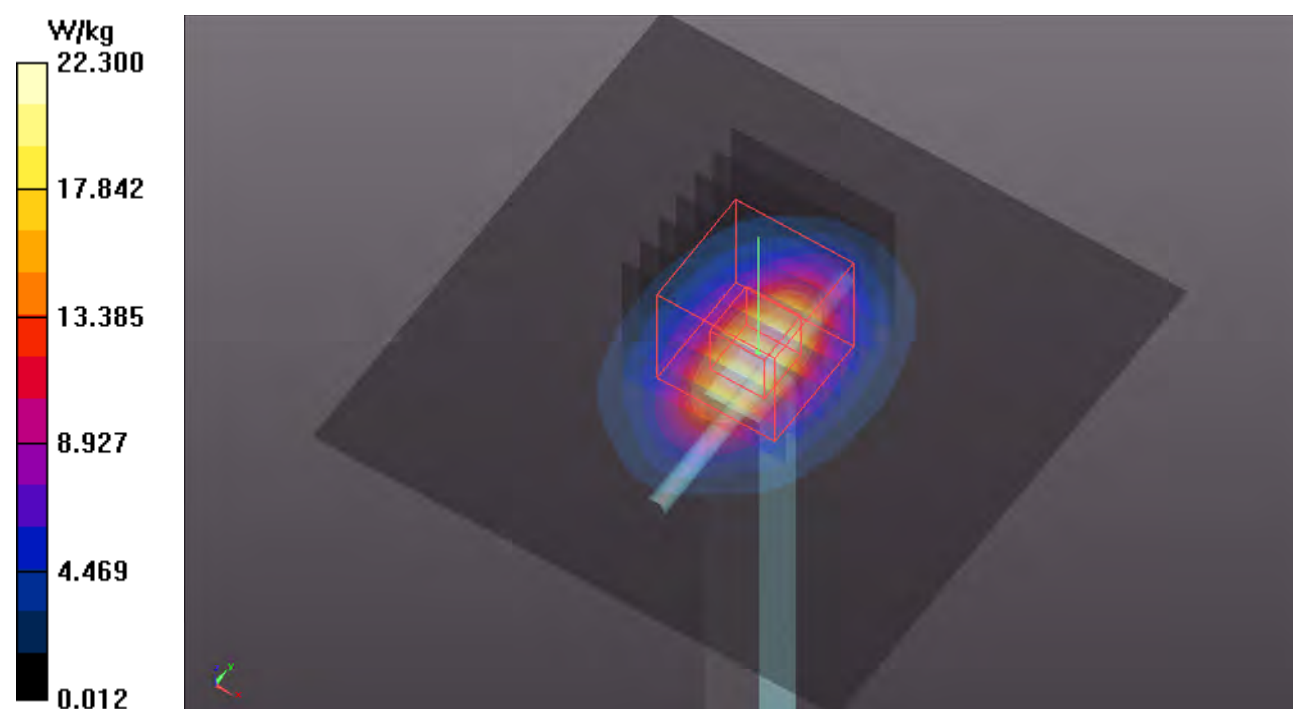
Pin=250mW/Zoom Scan (7x7x7)/Cube 0: Measurement grid: dx=5mm, dy=5mm, dz=5mm

Reference Value = 105.5 V/m; Power Drift = -0.03 dB

Peak SAR (extrapolated) = 27.8 W/kg

SAR(1 g) = 13.3 W/kg; SAR(10 g) = 6.16 W/kg

Maximum value of SAR (measured) = 22.4 W/kg



System Check_H5250_190719

DUT: Dipole 5 GHz; Type: D5GHzV2; SN: 1019

Communication System: CW; Frequency: 5250 MHz; Duty Cycle: 1:1

Medium: H34T60N1_0719 Medium parameters used: $f = 5250$ MHz; $\sigma = 4.791$ S/m; $\epsilon_r = 37.279$; $\rho = 1000$ kg/m³

Ambient Temperature : 23.7 °C ; Liquid Temperature : 23.4 °C

DASY5 Configuration:

- Probe: EX3DV4 - SN3971; ConvF(5.12, 5.12, 5.12); Calibrated: 2019/03/29
- Sensor-Surface: 1.4mm (Mechanical Surface Detection)
- Electronics: DAE4 Sn1431; Calibrated: 2019/03/25
- Phantom: ELI Phantom_1043; Type: QDOVA
- Measurement SW: DASY52, Version 52.10 (2); SEMCAD X Version 14.6.12 (7470)

Pin=100mW/Area Scan (91x91x1): Interpolated grid: dx=1.000 mm, dy=1.000 mm

Maximum value of SAR (interpolated) = 19.7 W/kg

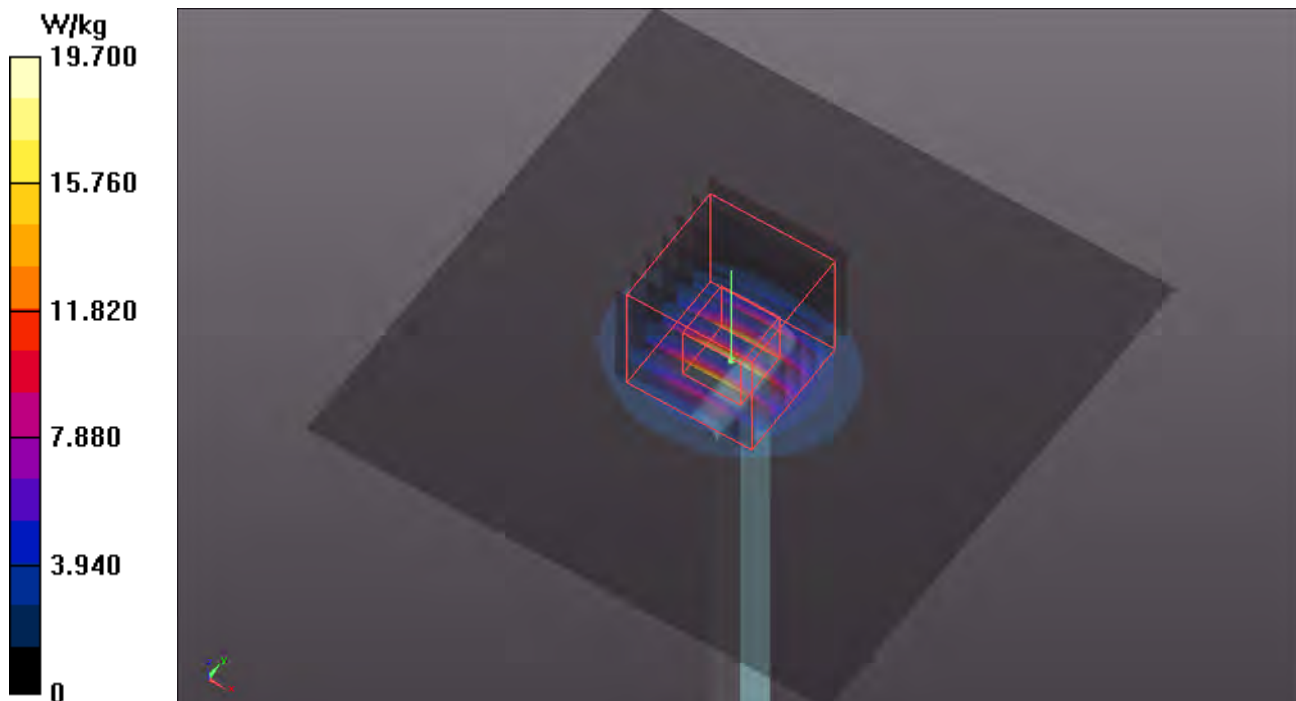
Pin=100mW/Zoom Scan (7x7x12)/Cube 0: Measurement grid: dx=4mm, dy=4mm, dz=2mm

Reference Value = 72.92 V/m; Power Drift = 0.04 dB

Peak SAR (extrapolated) = 36.0 W/kg

SAR(1 g) = 8.47 W/kg; SAR(10 g) = 2.43 W/kg

Maximum value of SAR (measured) = 21.4 W/kg



System Check_H5600_190709

DUT: Dipole 5 GHz; Type: D5GHzV2; SN: 1019

Communication System: CW; Frequency: 5600 MHz; Duty Cycle: 1:1

Medium: H34T60N3_0709 Medium parameters used: $f = 5600$ MHz; $\sigma = 5.074$ S/m; $\epsilon_r = 36.37$; $\rho = 1000$ kg/m³

Ambient Temperature : 23.8 °C ; Liquid Temperature : 23.4 °C

DASY5 Configuration:

- Probe: EX3DV4 - SN3650; ConvF(4.9, 4.9, 4.9); Calibrated: 2019/05/20
- Sensor-Surface: 1.4mm (Mechanical Surface Detection)
- Electronics: DAE4 Sn861; Calibrated: 2019/05/08
- Phantom: ELI Phantom_1206; Type: QDOVA002AA;
- Measurement SW: DASY52, Version 52.10 (2); SEMCAD X Version 14.6.12 (7470)

Pin=100mW/Area Scan (91x91x1): Interpolated grid: dx=1.000 mm, dy=1.000 mm

Maximum value of SAR (interpolated) = 19.7 W/kg

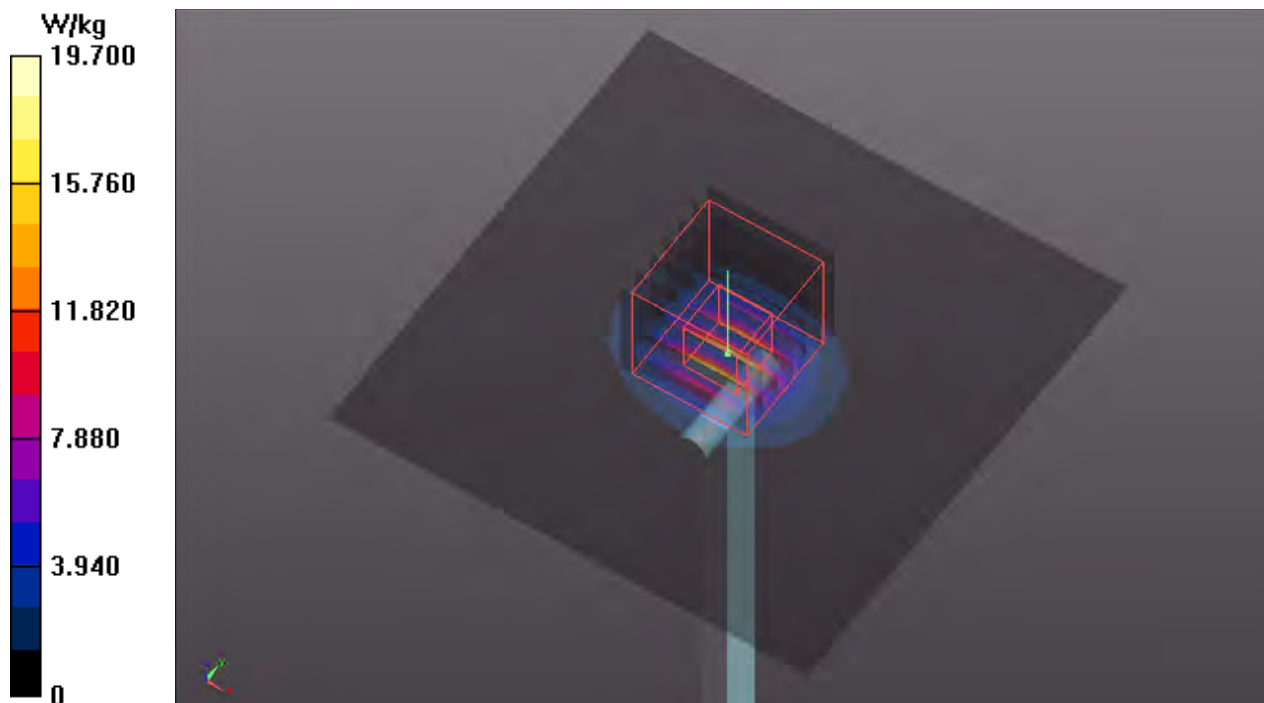
Pin=100mW/Zoom Scan (7x7x12)/Cube 0: Measurement grid: dx=4mm, dy=4mm, dz=2mm

Reference Value = 71.24 V/m; Power Drift = -0.05 dB

Peak SAR (extrapolated) = 34.4 W/kg

SAR(1 g) = 8.09 W/kg; SAR(10 g) = 2.32 W/kg

Maximum value of SAR (measured) = 20.8 W/kg



System Check_H5750_190717

DUT: Dipole 5 GHz; Type: D5GHzV2; SN: 1019

Communication System: CW; Frequency: 5750 MHz; Duty Cycle: 1:1

Medium: H34T60N1_0717 Medium parameters used: $f = 5750$ MHz; $\sigma = 5.412$ S/m; $\epsilon_r = 35.45$; $\rho = 1000$ kg/m³

Ambient Temperature : 23.7 °C ; Liquid Temperature : 23.4 °C

DASY5 Configuration:

- Probe: EX3DV4 - SN3971; ConvF(4.92, 4.92, 4.92); Calibrated: 2019/03/29
- Sensor-Surface: 1.4mm (Mechanical Surface Detection)
- Electronics: DAE4 Sn1431; Calibrated: 2019/03/25
- Phantom: ELI Phantom_1043; Type: QDOVA;
- Measurement SW: DASY52, Version 52.10 (2); SEMCAD X Version 14.6.12 (7470)

Pin=100mW/Area Scan (91x91x1): Interpolated grid: dx=1.000 mm, dy=1.000 mm

Maximum value of SAR (interpolated) = 18.9 W/kg

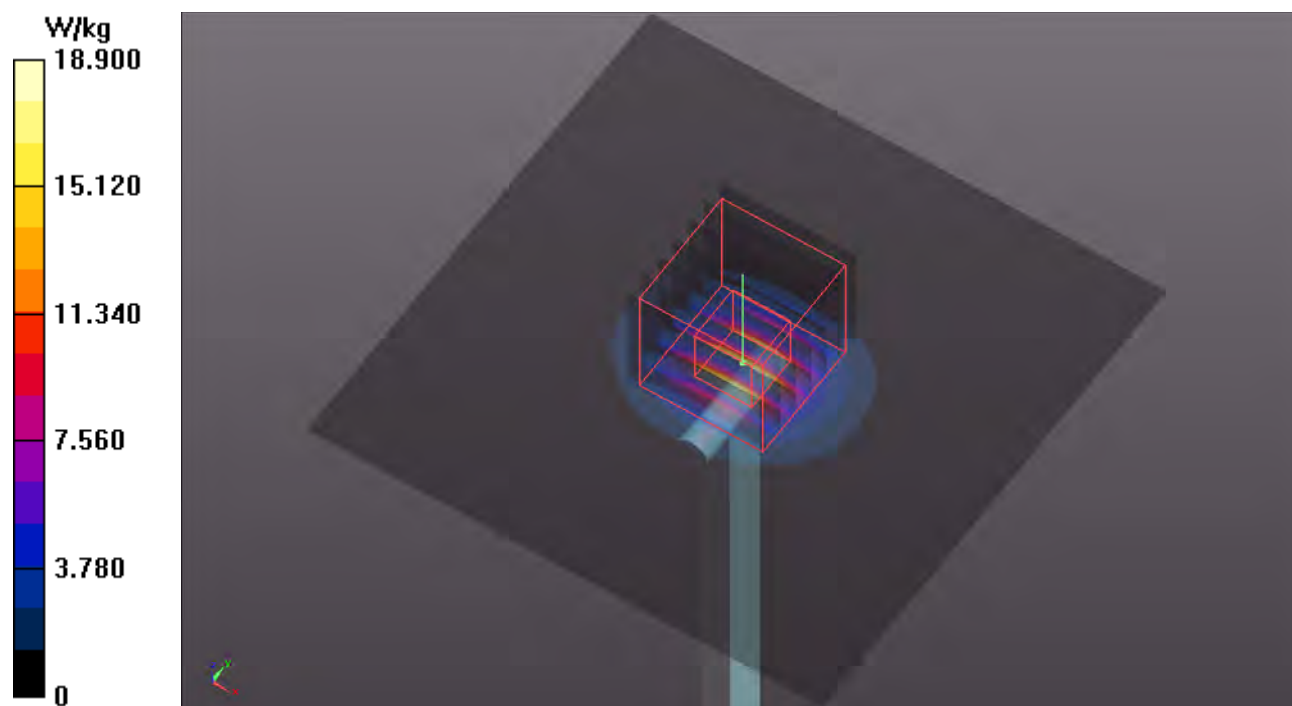
Pin=100mW/Zoom Scan (7x7x12)/Cube 0: Measurement grid: dx=4mm, dy=4mm, dz=2mm

Reference Value = 59.15 V/m; Power Drift = -0.09 dB

Peak SAR (extrapolated) = 36.1 W/kg

SAR(1 g) = 7.84 W/kg; SAR(10 g) = 2.24 W/kg

Maximum value of SAR (measured) = 20.5 W/kg



Appendix B. SAR Plots of SAR Measurement

The SAR plots for highest measured SAR in each exposure configuration, wireless mode and frequency band combination, and measured SAR > 1.5 W/kg are shown as follows.

P01 WLAN2.4G_802.11b_Rear Face_0mm_Ch6_Ant0_P-Sensor_w**DUT: 190628C20**

Communication System: WLAN_2.4G; Frequency: 2437 MHz; Duty Cycle: 1:1

Medium: H19T27N1_0718 Medium parameters used: $f = 2437$ MHz; $\sigma = 1.852$ S/m; $\epsilon_r = 37.927$; $\rho = 1000$ kg/m³

Ambient Temperature : 23.7 °C ; Liquid Temperature : 23.4 °C

DASY5 Configuration:

- Probe: EX3DV4 - SN3971; ConvF(7.65, 7.65, 7.65); Calibrated: 2019/03/29
- Sensor-Surface: 1.4mm (Mechanical Surface Detection)
- Electronics: DAE4 Sn1431; Calibrated: 2019/03/25
- Phantom: ELI Phantom_1043; Type: QDOVA;
- Measurement SW: DASY52, Version 52.10 (2); SEMCAD X Version 14.6.12 (7470)

- Area Scan (71x291x1): Interpolated grid: dx=1.200 mm, dy=1.200 mm

Maximum value of SAR (interpolated) = 0.849 W/kg

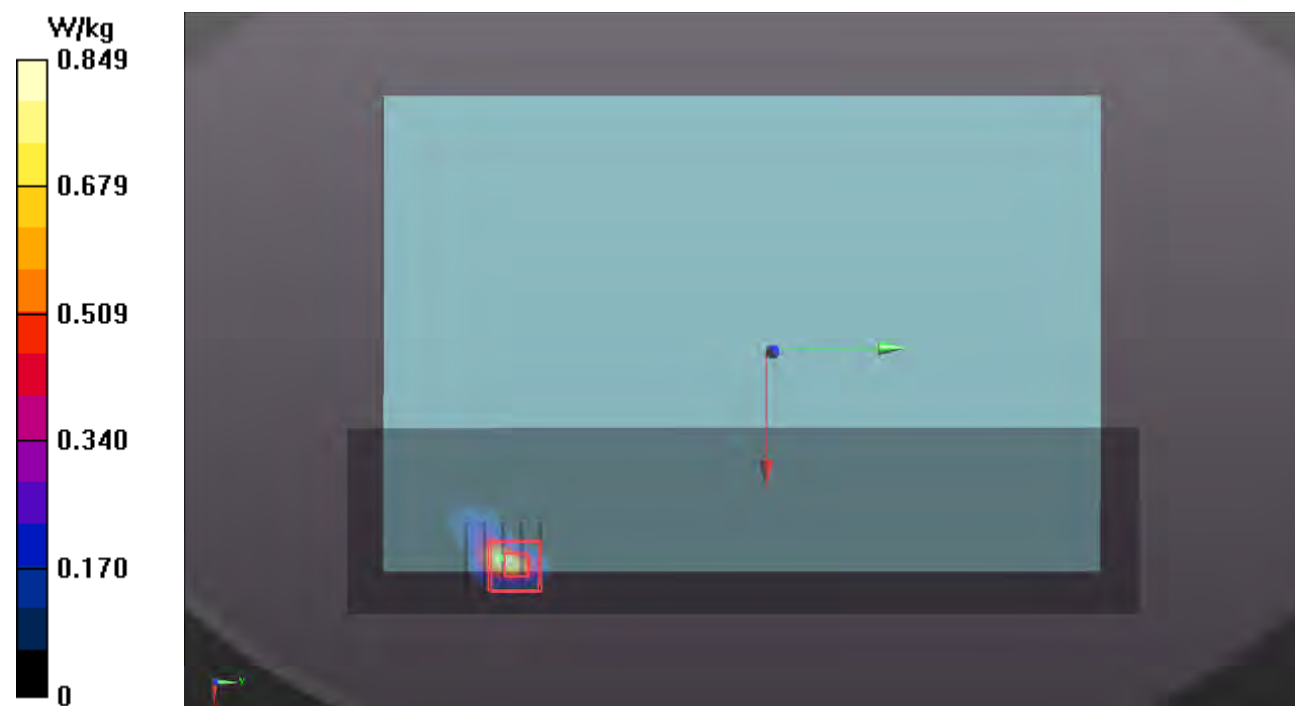
- Zoom Scan (5x5x7)/Cube 0: Measurement grid: dx=8mm, dy=8mm, dz=5mm

Reference Value = 16.11 V/m; Power Drift = -0.04 dB

Peak SAR (extrapolated) = 1.00 W/kg

SAR(1 g) = 0.435 W/kg; SAR(10 g) = 0.144 W/kg

Maximum value of SAR (measured) = 0.688 W/kg



P02 WLAN5.3G_802.11ac VHT80_Rear Face_0mm_Ch58_Ant0+1_P-Sensor_w**DUT: 190628C20**

Communication System: WLAN_5G; Frequency: 5290 MHz; Duty Cycle: 1:1

Medium: H34T60N1_0717 Medium parameters used: $f = 5290$ MHz; $\sigma = 4.893$ S/m; $\epsilon_r = 36.329$; $\rho = 1000$ kg/m³

Ambient Temperature : 23.7 °C ; Liquid Temperature : 23.4 °C

DASY5 Configuration:

- Probe: EX3DV4 - SN3971; ConvF(5.12, 5.12, 5.12); Calibrated: 2019/03/29
- Sensor-Surface: 1.4mm (Mechanical Surface Detection)
- Electronics: DAE4 Sn1431; Calibrated: 2019/03/25
- Phantom: ELI Phantom_1043; Type: QDOVA;
- Measurement SW: DASY52, Version 52.10 (2); SEMCAD X Version 14.6.12 (7470)

- Area Scan (81x341x1): Interpolated grid: dx=1.000 mm, dy=1.000 mm

Maximum value of SAR (interpolated) = 1.27 W/kg

- Zoom Scan (6x6x12)/Cube 0: Measurement grid: dx=5mm, dy=5mm, dz=2mm

Reference Value = 14.43 V/m; Power Drift = -0.03 dB

Peak SAR (extrapolated) = 2.93 W/kg

SAR(1 g) = 0.732 W/kg; SAR(10 g) = 0.182 W/kg

Maximum value of SAR (measured) = 1.65 W/kg

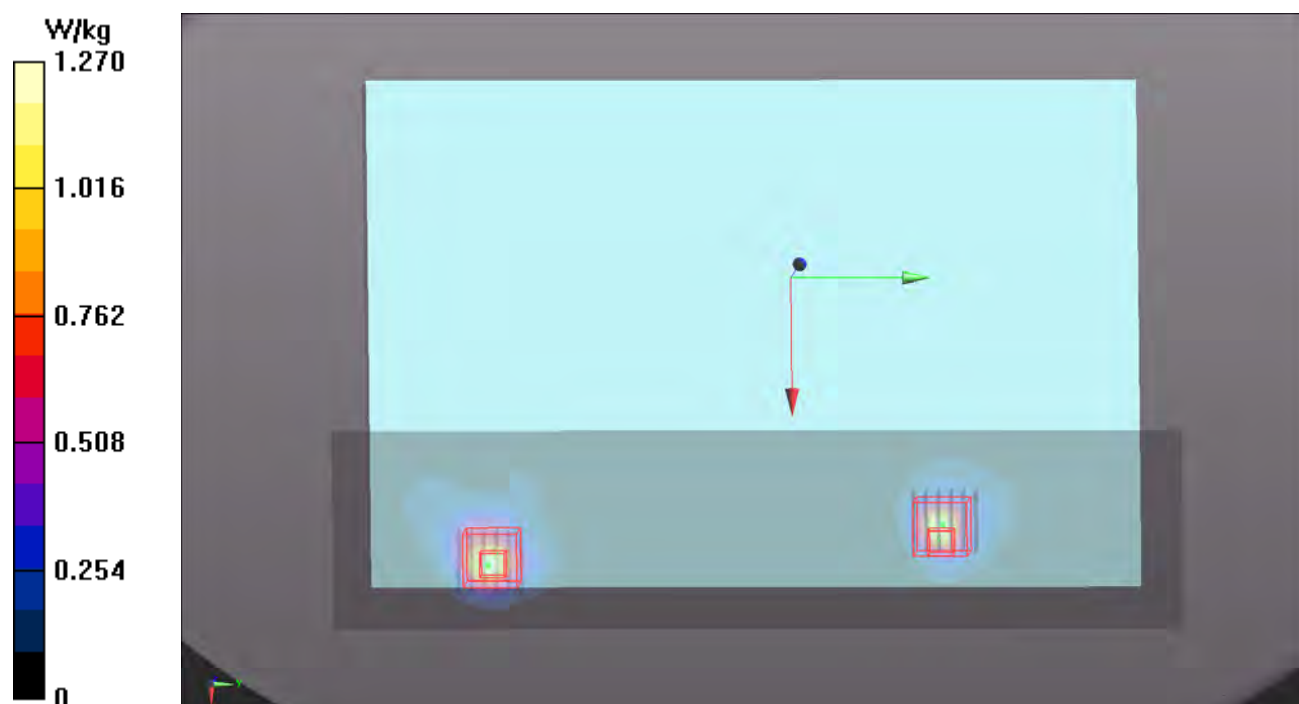
- Zoom Scan (6x6x12)/Cube 1: Measurement grid: dx=5mm, dy=5mm, dz=2mm

Reference Value = 14.43 V/m; Power Drift = -0.03 dB

Peak SAR (extrapolated) = 2.79 W/kg

SAR(1 g) = 0.677 W/kg; SAR(10 g) = 0.200 W/kg

Maximum value of SAR (measured) = 1.59 W/kg



P03 WLAN5.6G_802.11ac VHT80_Rear Face_0mm_Ch106_Ant1_P-Sensor w**DUT: 190628C20**

Communication System: WLAN_5G; Frequency: 5530 MHz; Duty Cycle: 1:1

Medium: H34T60N3_0709 Medium parameters used: $f = 5530$ MHz; $\sigma = 4.875$ S/m; $\epsilon_r = 36.536$; $\rho = 1000$ kg/m³

Ambient Temperature : 23.8 °C ; Liquid Temperature : 23.4 °C

DASY5 Configuration:

- Probe: EX3DV4 - SN3650; ConvF(4.9, 4.9, 4.9); Calibrated: 2019/05/20
- Sensor-Surface: 1.4mm (Mechanical Surface Detection)
- Electronics: DAE4 Sn861; Calibrated: 2019/05/08
- Phantom: ELI Phantom_1206; Type: QDOVA002AA;
- Measurement SW: DASY52, Version 52.10 (2); SEMCAD X Version 14.6.12 (7470)

- Area Scan (81x341x1): Interpolated grid: dx=1.000 mm, dy=1.000 mm

Maximum value of SAR (interpolated) = 1.32 W/kg

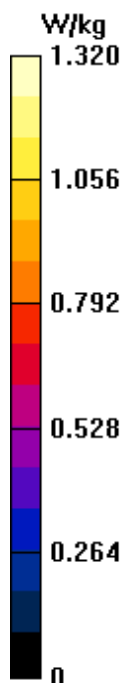
- Zoom Scan (6x6x12)/Cube 0: Measurement grid: dx=5mm, dy=5mm, dz=2mm

Reference Value = 12.92 V/m; Power Drift = -0.02 dB

Peak SAR (extrapolated) = 2.76 W/kg

SAR(1 g) = 0.628 W/kg; SAR(10 g) = 0.193 W/kg

Maximum value of SAR (measured) = 1.50 W/kg



P04 WLAN5.8G_802.11ac VHT80_Rear Face_0mm_Ch155_Ant1_P-Sensor_w**DUT: 190628C20**

Communication System: WLAN_5G; Frequency: 5775 MHz; Duty Cycle: 1:1

Medium: H34T60N1_0717 Medium parameters used: $f = 5775$ MHz; $\sigma = 5.454$ S/m; $\epsilon_r = 35.429$; $\rho = 1000$ kg/m³

Ambient Temperature : 23.7 °C ; Liquid Temperature : 23.4 °C

DASY5 Configuration:

- Probe: EX3DV4 - SN3971; ConvF(4.92, 4.92, 4.92); Calibrated: 2019/03/29
- Sensor-Surface: 1.4mm (Mechanical Surface Detection)
- Electronics: DAE4 Sn1431; Calibrated: 2019/03/25
- Phantom: ELI Phantom_1043; Type: QDOVA;
- Measurement SW: DASY52, Version 52.10 (2); SEMCAD X Version 14.6.12 (7470)

- Area Scan (81x341x1): Interpolated grid: dx=1.000 mm, dy=1.000 mm

Maximum value of SAR (interpolated) = 1.16 W/kg

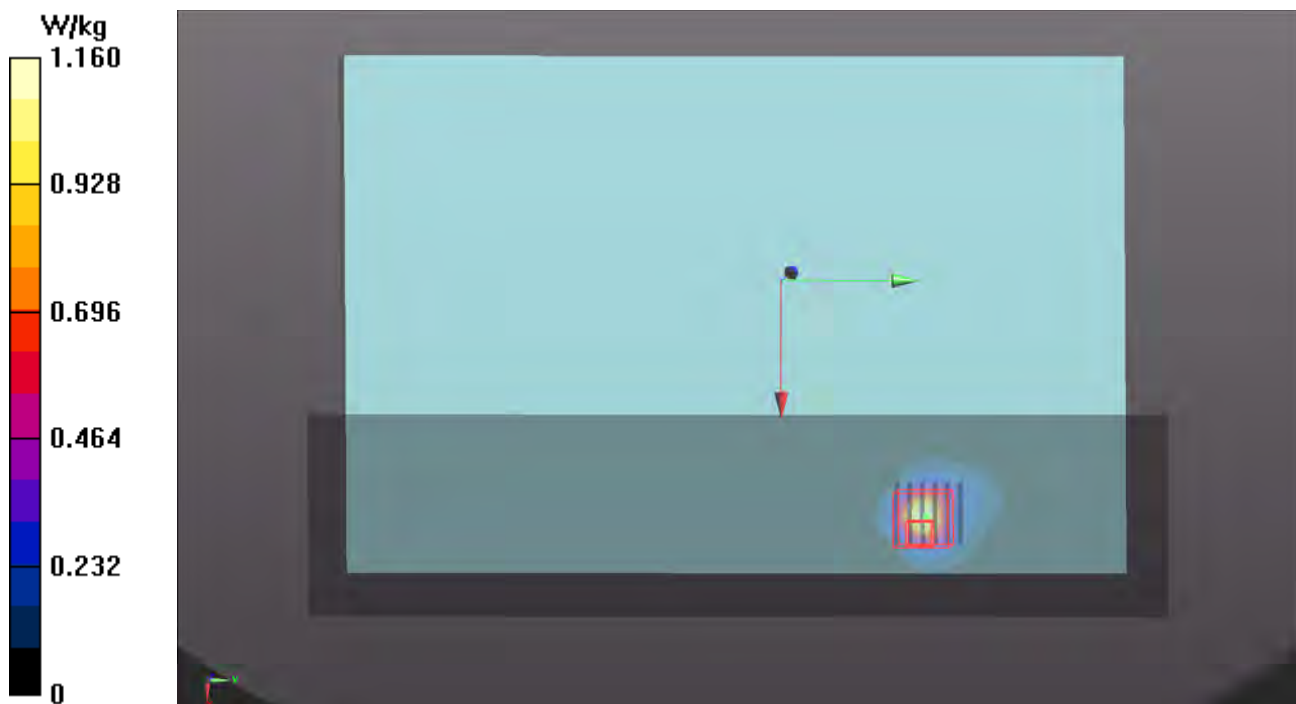
- Zoom Scan (6x6x12)/Cube 0: Measurement grid: dx=5mm, dy=5mm, dz=2mm

Reference Value = 13.65 V/m; Power Drift = -0.16 dB

Peak SAR (extrapolated) = 2.95 W/kg

SAR(1 g) = 0.637 W/kg; SAR(10 g) = 0.160 W/kg

Maximum value of SAR (measured) = 1.89 W/kg



P05 BT_LE_Rear Face_0mm_Ch19_Ant1**DUT: 190628C20**

Communication System: BT; Frequency: 2440 MHz; Duty Cycle: 1:1.17

Medium: H19T27N1_0718 Medium parameters used: $f = 2440$ MHz; $\sigma = 1.856$ S/m; $\epsilon_r = 37.919$; $\rho = 1000$ kg/m³

Ambient Temperature : 23.7 °C ; Liquid Temperature : 23.4 °C

DASY5 Configuration:

- Probe: EX3DV4 - SN3971; ConvF(7.65, 7.65, 7.65); Calibrated: 2019/03/29
- Sensor-Surface: 1.4mm (Mechanical Surface Detection)
- Electronics: DAE4 Sn1431; Calibrated: 2019/03/25
- Phantom: ELI Phantom_1043; Type: QDOVA;
- Measurement SW: DASY52, Version 52.10 (2); SEMCAD X Version 14.6.12 (7470)

- **Area Scan (71x291x1):** Interpolated grid: dx=1.200 mm, dy=1.200 mm

Maximum value of SAR (interpolated) = 0.0303 W/kg

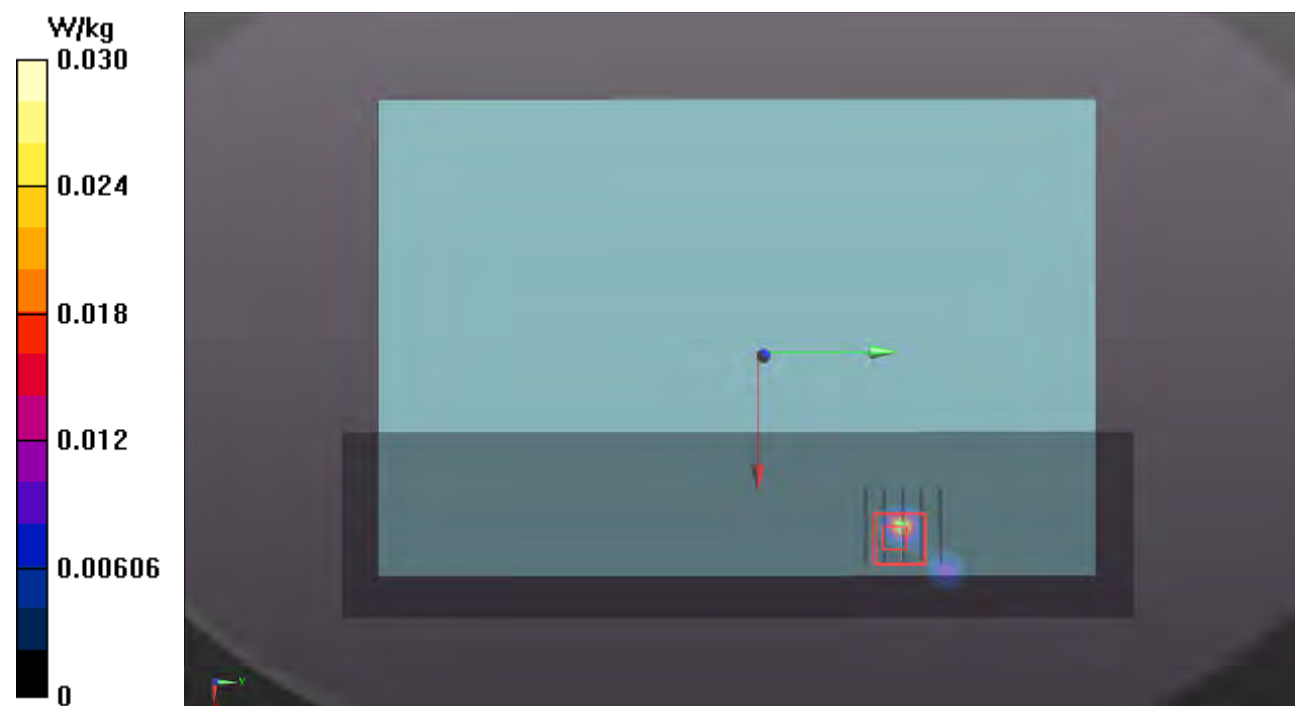
- **Zoom Scan (5x5x7)/Cube 0:** Measurement grid: dx=8mm, dy=8mm, dz=5mm

Reference Value = 4.258 V/m; Power Drift = 0.17 dB

Peak SAR (extrapolated) = 0.0780 W/kg

SAR(1 g) = 0.023 W/kg; SAR(10 g) = 0.00443 W/kg

Maximum value of SAR (measured) = 0.0598 W/kg



P06 WLAN2.4G_802.11b_Bottom_0mm_Ch6_Ant0_P-Sensor_w**DUT: 190628C20**

Communication System: WLAN_2.4G; Frequency: 2437 MHz; Duty Cycle: 1:1

Medium: H19T27N1_0718 Medium parameters used: $f = 2437$ MHz; $\sigma = 1.852$ S/m; $\epsilon_r = 37.927$; $\rho = 1000$ kg/m³

Ambient Temperature : 23.7 °C ; Liquid Temperature : 23.4 °C

DASY5 Configuration:

- Probe: EX3DV4 - SN3971; ConvF(7.65, 7.65, 7.65); Calibrated: 2019/03/29
- Sensor-Surface: 1.4mm (Mechanical Surface Detection)
- Electronics: DAE4 Sn1431; Calibrated: 2019/03/25
- Phantom: ELI Phantom_1043; Type: QDOVA;
- Measurement SW: DASY52, Version 52.10 (2); SEMCAD X Version 14.6.12 (7470)

- Area Scan (71x291x1): Interpolated grid: dx=1.200 mm, dy=1.200 mm

Maximum value of SAR (interpolated) = 0.695 W/kg

- Zoom Scan (5x5x7)/Cube 0: Measurement grid: dx=8mm, dy=8mm, dz=5mm

Reference Value = 17.91 V/m; Power Drift = -0.09 dB

Peak SAR (extrapolated) = 1.03 W/kg

SAR(1 g) = 0.452 W/kg; SAR(10 g) = 0.185 W/kg

Maximum value of SAR (measured) = 0.772 W/kg



P07 WLAN5.3G_802.11ac VHT80_Bottom_0mm_Ch58_Ant0+1_P-Sensor_w**DUT: 190628C20**

Communication System: WLAN_5G; Frequency: 5290 MHz; Duty Cycle: 1:1

Medium: H34T60N1_0719 Medium parameters used: $f = 5290$ MHz; $\sigma = 4.796$ S/m; $\epsilon_r = 37.017$; $\rho = 1000$ kg/m³

Ambient Temperature : 23.7 °C ; Liquid Temperature : 23.4 °C

DASY5 Configuration:

- Probe: EX3DV4 - SN3971; ConvF(5.12, 5.12, 5.12); Calibrated: 2019/03/29
- Sensor-Surface: 1.4mm (Mechanical Surface Detection)
- Electronics: DAE4 Sn1431; Calibrated: 2019/03/25
- Phantom: ELI Phantom_1043; Type: QDOVA;
- Measurement SW: DASY52, Version 52.10 (2); SEMCAD X Version 14.6.12 (7470)

- Area Scan (81x1341x1): Interpolated grid: dx=1.000 mm, dy=1.000 mm

Maximum value of SAR (interpolated) = 0.322 W/kg

- Zoom Scan (6x6x12)/Cube 0: Measurement grid: dx=5mm, dy=5mm, dz=2mm

Reference Value = 8.546 V/m; Power Drift = -0.11 dB

Peak SAR (extrapolated) = 1.13 W/kg

SAR(1 g) = 0.202 W/kg; SAR(10 g) = 0.057 W/kg

Maximum value of SAR (measured) = 0.488 W/kg

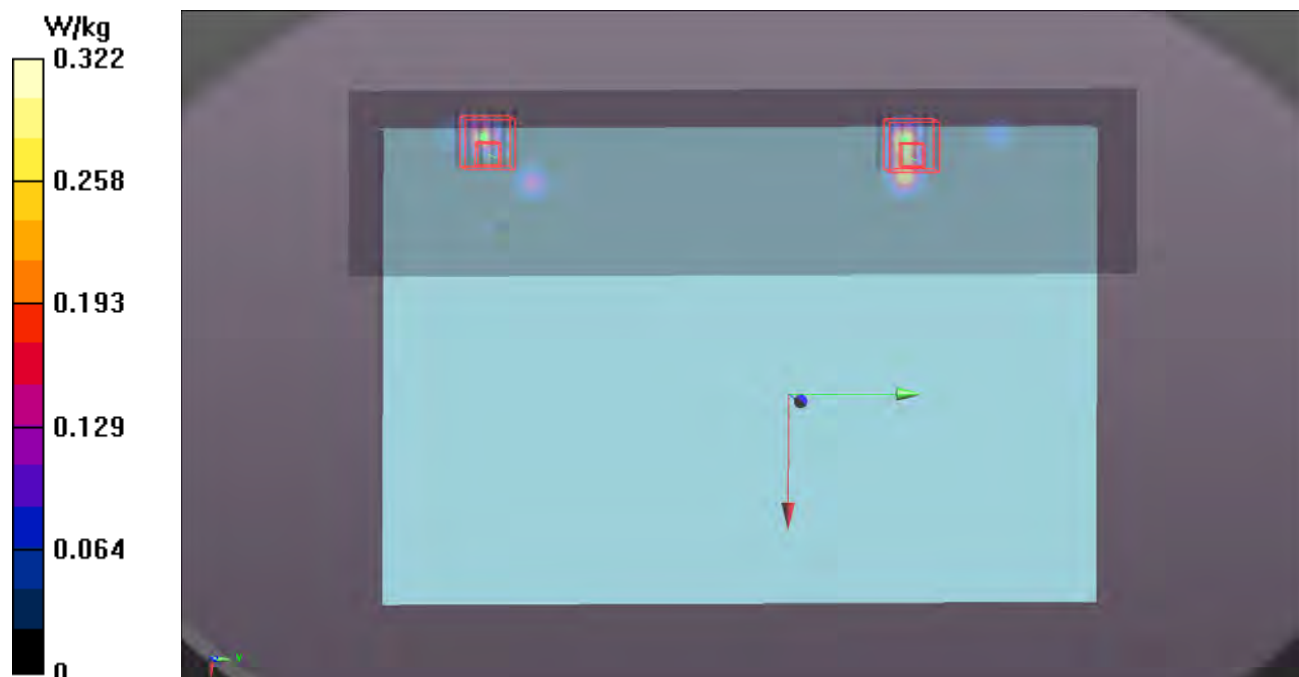
- Zoom Scan (6x6x12)/Cube 1: Measurement grid: dx=5mm, dy=5mm, dz=2mm

Reference Value = 8.546 V/m; Power Drift = -0.11 dB

Peak SAR (extrapolated) = 0.794 W/kg

SAR(1 g) = 0.205 W/kg; SAR(10 g) = 0.049 W/kg

Maximum value of SAR (measured) = 0.539 W/kg



P08 WLAN5.6G_802.11ac VHT80_Bottom_0mm_Ch106_Ant1_P-Sensor_w**DUT: 190628C20**

Communication System: WLAN_5G; Frequency: 5530 MHz; Duty Cycle: 1:1

Medium: H34T60N1_0719 Medium parameters used: $f = 5530$ MHz; $\sigma = 5.046$ S/m; $\epsilon_r = 36.627$; $\rho = 1000$ kg/m³

Ambient Temperature : 23.7 °C ; Liquid Temperature : 23.4 °C

DASY5 Configuration:

- Probe: EX3DV4 - SN3971; ConvF(4.78, 4.78, 4.78); Calibrated: 2019/03/29
- Sensor-Surface: 1.4mm (Mechanical Surface Detection)
- Electronics: DAE4 Sn1431; Calibrated: 2019/03/25
- Phantom: ELI Phantom_1043; Type: QDOVA;
- Measurement SW: DASY52, Version 52.10 (2); SEMCAD X Version 14.6.12 (7470)

- Area Scan (81x341x1): Interpolated grid: dx=1.000 mm, dy=1.000 mm

Maximum value of SAR (interpolated) = 0.656 W/kg

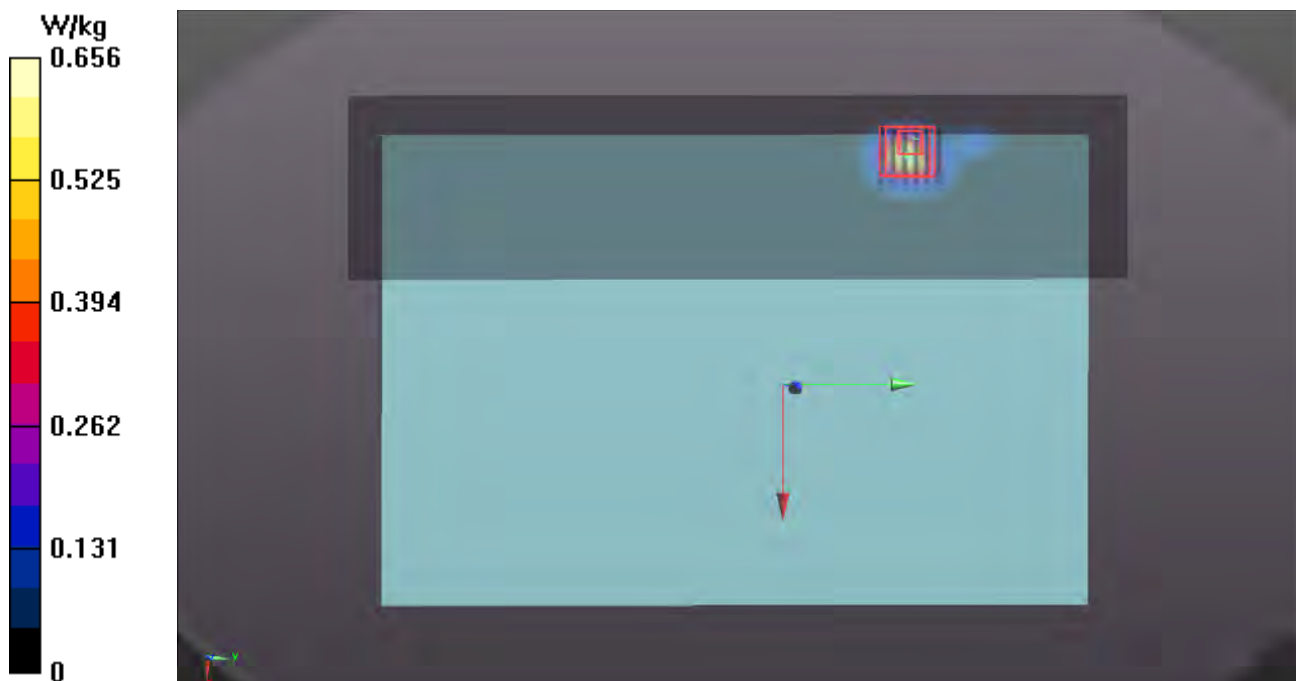
- Zoom Scan (6x6x12)/Cube 0: Measurement grid: dx=5mm, dy=5mm, dz=2mm

Reference Value = 9.599 V/m; Power Drift = -0.17 dB

Peak SAR (extrapolated) = 0.698 W/kg

SAR(1 g) = 0.192 W/kg; SAR(10 g) = 0.061 W/kg

Maximum value of SAR (measured) = 0.469 W/kg



P09 WLAN5.8G_802.11ac VHT80_Bottom_0mm_Ch155_Ant1_P-Sensor_w**DUT: 190628C20**

Communication System: WLAN_5G; Frequency: 5775 MHz; Duty Cycle: 1:1

Medium: H34T60N1_0719 Medium parameters used: $f = 5775$ MHz; $\sigma = 5.34$ S/m; $\epsilon_r = 36.318$; $\rho = 1000$ kg/m³

Ambient Temperature : 23.7 °C ; Liquid Temperature : 23.4 °C

DASY5 Configuration:

- Probe: EX3DV4 - SN3971; ConvF(4.92, 4.92, 4.92); Calibrated: 2019/03/29
- Sensor-Surface: 1.4mm (Mechanical Surface Detection)
- Electronics: DAE4 Sn1431; Calibrated: 2019/03/25
- Phantom: ELI Phantom_1043; Type: QDOVA;
- Measurement SW: DASY52, Version 52.10 (2); SEMCAD X Version 14.6.12 (7470)

- Area Scan (81x341x1): Interpolated grid: dx=1.000 mm, dy=1.000 mm

Maximum value of SAR (interpolated) = 0.350 W/kg

- Zoom Scan (6x6x12)/Cube 0: Measurement grid: dx=5mm, dy=5mm, dz=2mm

Reference Value = 7.501 V/m; Power Drift = -0.09 dB

Peak SAR (extrapolated) = 0.585 W/kg

SAR(1 g) = 0.152 W/kg; SAR(10 g) = 0.042 W/kg

Maximum value of SAR (measured) = 0.392 W/kg

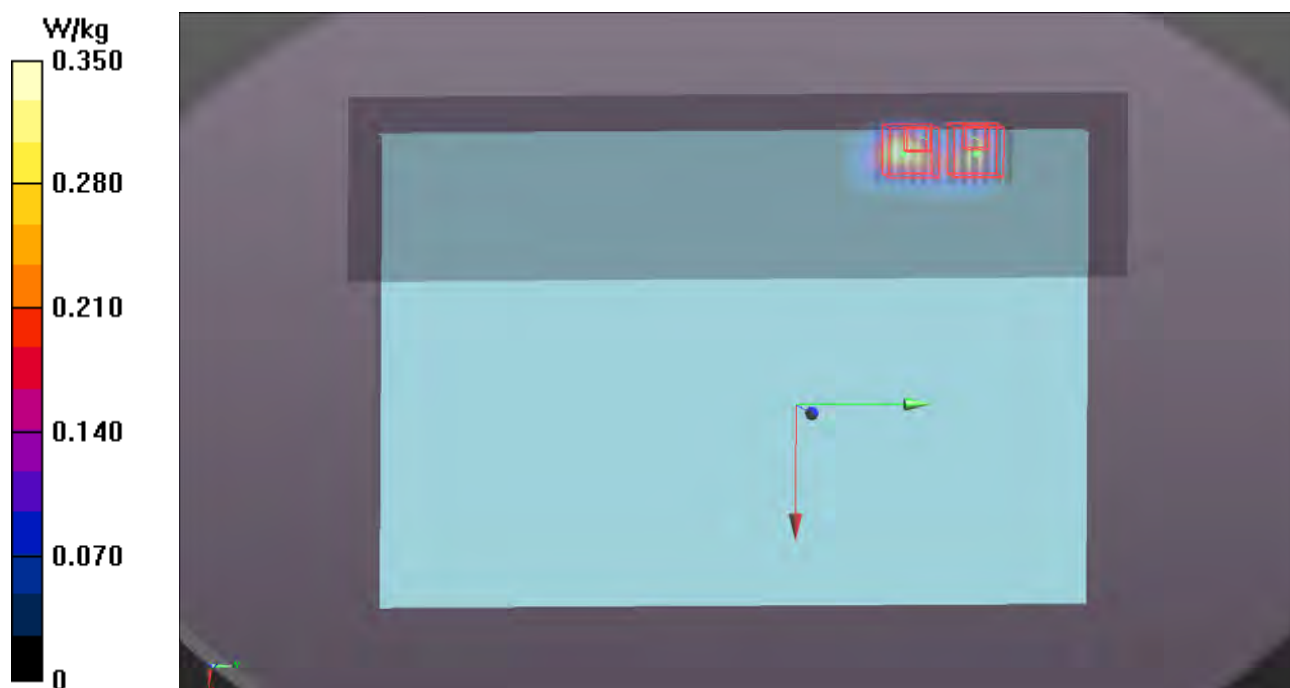
- Zoom Scan (6x6x12)/Cube 1: Measurement grid: dx=5mm, dy=5mm, dz=2mm

Reference Value = 7.501 V/m; Power Drift = -0.09 dB

Peak SAR (extrapolated) = 0.357 W/kg

SAR(1 g) = 0.084 W/kg; SAR(10 g) = 0.023 W/kg

Maximum value of SAR (measured) = 0.273 W/kg



P10 BT_LE_Bottom_0mm_Ch19_Ant1**DUT: 190628C20**

Communication System: BT; Frequency: 2440 MHz; Duty Cycle: 1:1.17

Medium: H19T27N1_0718 Medium parameters used: $f = 2440$ MHz; $\sigma = 1.856$ S/m; $\epsilon_r = 37.919$; $\rho = 1000$ kg/m³

Ambient Temperature : 23.7 °C ; Liquid Temperature : 23.4 °C

DASY5 Configuration:

- Probe: EX3DV4 - SN3971; ConvF(7.65, 7.65, 7.65); Calibrated: 2019/03/29
- Sensor-Surface: 1.4mm (Mechanical Surface Detection)
- Electronics: DAE4 Sn1431; Calibrated: 2019/03/25
- Phantom: ELI Phantom_1043; Type: QDOVA;
- Measurement SW: DASY52, Version 52.10 (2); SEMCAD X Version 14.6.12 (7470)

- **Area Scan (71x291x1):** Interpolated grid: dx=1.200 mm, dy=1.200 mm

Maximum value of SAR (interpolated) = 0.0280 W/kg

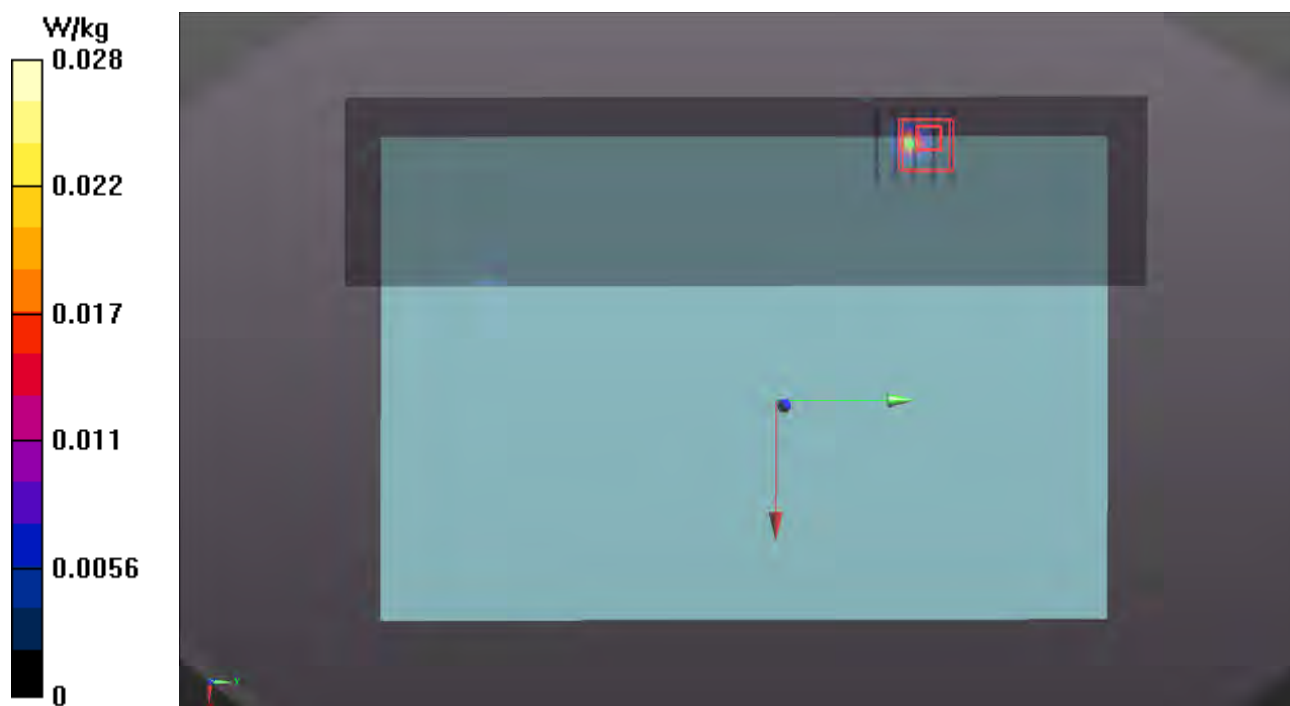
- **Zoom Scan (5x5x7)/Cube 0:** Measurement grid: dx=8mm, dy=8mm, dz=5mm

Reference Value = 4.184 V/m; Power Drift = -0.16 dB

Peak SAR (extrapolated) = 0.0560 W/kg

SAR(1 g) = 0.020 W/kg; SAR(10 g) = 0.00569 W/kg

Maximum value of SAR (measured) = 0.0397 W/kg



Appendix C. Calibration Certificate for Probe and Dipole

The SPEAG calibration certificates are shown as follows.



Accredited by the Swiss Accreditation Service (SAS)

Accreditation No.: **SCS 0108**

The Swiss Accreditation Service is one of the signatories to the EA
Multilateral Agreement for the recognition of calibration certificates

Client **B.V. ADT (Auden)**

Certificate No: **D2450V2-737_Aug18**

CALIBRATION CERTIFICATE

Object **D2450V2 - SN:737**

Calibration procedure(s) **QA CAL-05.v10**
Calibration procedure for dipole validation kits above 700 MHz

Calibration date: **August 24, 2018**

This calibration certificate documents the traceability to national standards, which realize the physical units of measurements (SI).
The measurements and the uncertainties with confidence probability are given on the following pages and are part of the certificate.

All calibrations have been conducted in the closed laboratory facility: environment temperature (22 ± 3)°C and humidity < 70%.

Calibration Equipment used (M&TE critical for calibration)

Primary Standards	ID #	Cal Date (Certificate No.)	Scheduled Calibration
Power meter NRP	SN: 104778	04-Apr-18 (No. 217-02672/02673)	Apr-19
Power sensor NRP-Z91	SN: 103244	04-Apr-18 (No. 217-02672)	Apr-19
Power sensor NRP-Z91	SN: 103245	04-Apr-18 (No. 217-02673)	Apr-19
Reference 20 dB Attenuator	SN: 5058 (20k)	04-Apr-18 (No. 217-02682)	Apr-19
Type-N mismatch combination	SN: 5047.2 / 06327	04-Apr-18 (No. 217-02683)	Apr-19
Reference Probe EX3DV4	SN: 7349	30-Dec-17 (No. EX3-7349_Dec17)	Dec-18
DAE4	SN: 601	26-Oct-17 (No. DAE4-601_Oct17)	Oct-18
Secondary Standards	ID #	Check Date (in house)	Scheduled Check
Power meter EPM-442A	SN: GB37480704	07-Oct-15 (in house check Oct-16)	In house check: Oct-18
Power sensor HP 8481A	SN: US37292783	07-Oct-15 (in house check Oct-16)	In house check: Oct-18
Power sensor HP 8481A	SN: MY41092317	07-Oct-15 (in house check Oct-16)	In house check: Oct-18
RF generator R&S SMT-06	SN: 100972	15-Jun-15 (in house check Oct-16)	In house check: Oct-18
Network Analyzer Agilent E8358A	SN: US41080477	31-Mar-14 (in house check Oct-17)	In house check: Oct-18

Calibrated by: **Manu Seitz** **Laboratory Technician**

Approved by: **Katja Pokovic** **Technical Manager**

Signature

Issued: August 24, 2018

This calibration certificate shall not be reproduced except in full without written approval of the laboratory.



Accredited by the Swiss Accreditation Service (SAS)

The Swiss Accreditation Service is one of the signatories to the EA
Multilateral Agreement for the recognition of calibration certificates

Accreditation No.: **SCS 0108**

Glossary:

TSL	tissue simulating liquid
ConvF	sensitivity in TSL / NORM x,y,z
N/A	not applicable or not measured

Calibration is Performed According to the Following Standards:

- IEEE Std 1528-2013, "IEEE Recommended Practice for Determining the Peak Spatial-Averaged Specific Absorption Rate (SAR) in the Human Head from Wireless Communications Devices: Measurement Techniques", June 2013
- IEC 62209-1, "Measurement procedure for the assessment of Specific Absorption Rate (SAR) from hand-held and body-mounted devices used next to the ear (frequency range of 300 MHz to 6 GHz)", July 2016
- IEC 62209-2, "Procedure to determine the Specific Absorption Rate (SAR) for wireless communication devices used in close proximity to the human body (frequency range of 30 MHz to 6 GHz)", March 2010
- KDB 865664, "SAR Measurement Requirements for 100 MHz to 6 GHz"

Additional Documentation:

- DASY4/5 System Handbook

Methods Applied and Interpretation of Parameters:

- Measurement Conditions:* Further details are available from the Validation Report at the end of the certificate. All figures stated in the certificate are valid at the frequency indicated.
- Antenna Parameters with TSL:* The dipole is mounted with the spacer to position its feed point exactly below the center marking of the flat phantom section, with the arms oriented parallel to the body axis.
- Feed Point Impedance and Return Loss:* These parameters are measured with the dipole positioned under the liquid filled phantom. The impedance stated is transformed from the measurement at the SMA connector to the feed point. The Return Loss ensures low reflected power. No uncertainty required.
- Electrical Delay:* One-way delay between the SMA connector and the antenna feed point. No uncertainty required.
- SAR measured:* SAR measured at the stated antenna input power.
- SAR normalized:* SAR as measured, normalized to an input power of 1 W at the antenna connector.
- SAR for nominal TSL parameters:* The measured TSL parameters are used to calculate the nominal SAR result.

The reported uncertainty of measurement is stated as the standard uncertainty of measurement multiplied by the coverage factor $k=2$, which for a normal distribution corresponds to a coverage probability of approximately 95%.

Measurement Conditions

DASY system configuration, as far as not given on page 1.

DASY Version	DASY5	V52.10.1
Extrapolation	Advanced Extrapolation	
Phantom	Modular Flat Phantom	
Distance Dipole Center - TSL	10 mm	with Spacer
Zoom Scan Resolution	dx, dy, dz = 5 mm	
Frequency	2450 MHz \pm 1 MHz	

Head TSL parameters

The following parameters and calculations were applied.

	Temperature	Permittivity	Conductivity
Nominal Head TSL parameters	22.0 °C	39.2	1.80 mho/m
Measured Head TSL parameters	(22.0 \pm 0.2) °C	37.7 \pm 6 %	1.86 mho/m \pm 6 %
Head TSL temperature change during test	< 0.5 °C	----	----

SAR result with Head TSL

SAR averaged over 1 cm³ (1 g) of Head TSL	Condition	
SAR measured	250 mW input power	13.2 W/kg
SAR for nominal Head TSL parameters	normalized to 1W	51.5 W/kg \pm 17.0 % (k=2)

SAR averaged over 10 cm³ (10 g) of Head TSL	condition	
SAR measured	250 mW input power	6.13 W/kg
SAR for nominal Head TSL parameters	normalized to 1W	24.2 W/kg \pm 16.5 % (k=2)

Body TSL parameters

The following parameters and calculations were applied.

	Temperature	Permittivity	Conductivity
Nominal Body TSL parameters	22.0 °C	52.7	1.95 mho/m
Measured Body TSL parameters	(22.0 \pm 0.2) °C	51.8 \pm 6 %	2.02 mho/m \pm 6 %
Body TSL temperature change during test	< 0.5 °C	----	----

SAR result with Body TSL

SAR averaged over 1 cm³ (1 g) of Body TSL	Condition	
SAR measured	250 mW input power	12.9 W/kg
SAR for nominal Body TSL parameters	normalized to 1W	50.5 W/kg \pm 17.0 % (k=2)

SAR averaged over 10 cm³ (10 g) of Body TSL	condition	
SAR measured	250 mW input power	6.01 W/kg
SAR for nominal Body TSL parameters	normalized to 1W	23.8 W/kg \pm 16.5 % (k=2)

Appendix (Additional assessments outside the scope of SCS 0108)

Antenna Parameters with Head TSL

Impedance, transformed to feed point	$55.6 \Omega + 4.1 j\Omega$
Return Loss	- 23.7 dB

Antenna Parameters with Body TSL

Impedance, transformed to feed point	$49.4 \Omega + 7.3 j\Omega$
Return Loss	- 22.7 dB

General Antenna Parameters and Design

Electrical Delay (one direction)	1.162 ns
----------------------------------	----------

After long term use with 100W radiated power, only a slight warming of the dipole near the feedpoint can be measured.

The dipole is made of standard semirigid coaxial cable. The center conductor of the feeding line is directly connected to the second arm of the dipole. The antenna is therefore short-circuited for DC-signals. On some of the dipoles, small end caps are added to the dipole arms in order to improve matching when loaded according to the position as explained in the "Measurement Conditions" paragraph. The SAR data are not affected by this change. The overall dipole length is still according to the Standard.

No excessive force must be applied to the dipole arms, because they might bend or the soldered connections near the feedpoint may be damaged.

Additional EUT Data

Manufactured by	SPEAG
Manufactured on	August 26, 2003