

# FCC SAR Test Report

## FCC ID: TX2-RTL8821CE

**Project No.** : 1801C263  
**Equipment** : 802.11a/b/g/n/ac RTL8821CE Combo module  
**Test Model** : RTL8821CE  
**Applicant** : Realtek Semiconductor Corp.  
**Address** : No.2, Innovation Road II, Hsinchu Science Park, Hsinchu  
300, Taiwan

**Date of Receipt** : Feb. 09, 2018  
**Date of Test** : Mar. 10, 2018 ~ Mar. 12, 2018  
**Issued Date** : Mar. 13, 2018  
**Tested by** : BTL Inc.

*Rot Liang*

**PREPARED BY** : \_\_\_\_\_ (Rot Liang)

*Herbert Liu*

**APPROVED BY** : \_\_\_\_\_ (Herbert Liu)

# **B T L I N C .**

No.3, Jinshagang 1st Road, Shixia, Dalang Town, Dongguan,  
Guangdong, China.

TEL: +86-769-8318-3000 FAX: +86-769-8319-6000



### **Declaration**

**BTL** represents to the client that testing is done in accordance with standard procedures as applicable and that test instruments used has been calibrated with standards traceable to international standard(s) and/or national standard(s).

**BTL's** reports apply only to the specific samples tested under conditions. It is manufacture's responsibility to ensure that additional production units of this model are manufactured with the identical electrical and mechanical components. **BTL** shall have no liability for any declarations, inferences or generalizations drawn by the client or others from **BTL** issued reports.

**BTL's** reports must not be used by the client to claim product endorsement by the authorities or any agency of the Government.

This report is the confidential property of the client. As a mutual protection to the clients, the public and **BTL-self**, extracts from the test report shall not be reproduced except in full with **BTL's** authorized written approval.

**BTL's** laboratory quality assurance procedures are in compliance with the **ISO Guide17025** requirements, and accredited by the conformity assessment authorities listed in this test report.

### **Limitation**

For the use of the authority's logo is limited unless the Test Standard(s)/Scope(s)/Item(s) mentioned in this test report is (are) included in the conformity assessment authorities acceptance respective.

<b>Table of Contents</b>	<b>Page</b>
<b>1 . GENERAL SUMMARY</b>	<b>6</b>
<b>2 . RF EMISSIONS MEASUREMENT</b>	<b>7</b>
2.1 TEST FACILITY	7
2.2 MEASUREMENT UNCERTAINTY	7
<b>3 . GENERAL INFORMATION</b>	<b>8</b>
3.1 STATEMENT OF COMPLIANCE	8
3.2 GENERAL DESCRIPTION OF EUT	9
3.3 LABORATORY ENVIRONMENT	10
3.4 MAIN TEST INSTRUMENTS	11
<b>4 . SAR MEASUREMENTS SYSTEM CONFIGURATION</b>	<b>12</b>
4.1 SAR MEASUREMENT SET-UP	12
4.2 DASY5E-FIELDPROBESYSTEM	13
<b>5 . SYSTEM VERIFICATION PROCEDURE</b>	<b>21</b>
5.1 TISSUE VERIFICATION	21
5.2 SYSTEM CHECK	22
5.3 SYSTEM CHECK PROCEDURE	22
<b>6 . SAR MEASUREMENT VARIABILITY AND UNCERTAINTY</b>	<b>23</b>
6.1 SAR MEASUREMENT VARIABILITY	23
<b>7 . OPERATIONAL CONDITIONS DURING TEST</b>	<b>24</b>
7.1 SAR TEST CONFIGURATION	24
7.2 TEST POSITION	26
<b>8 . TEST RESULT</b>	<b>29</b>
8.1 CONDUCTED POWER RESULTS	29
8.2 SAR TEST RESULTS	40
8.3 MULTIPLE TRANSMITTER EVALUATION	47
<b>APPENDIX</b>	<b>50</b>
<b>1. TEST LAYOUT</b>	<b>50</b>
Appendix A. SAR Plots of System Verification	
Appendix B. SAR Plots of SAR Measurement	
Appendix C. Calibration Certificate for Probe and Dipole	
Appendix D. Photographs of the Test Set-Up	



## Table of Contents

## Page

Appendix E. Antenna location and standalone SAR test exclusion

**REPORT ISSUED HISTORY**

Issued No.	Description	Issued Date
BTL-FCC SAR-1-1801C263	Original Issue	Mar. 13, 2018

## 1. GENERAL SUMMARY

Equipment	802.11a/b/g/n/ac RTL8821CE Combo module
Brand Name	REALTEK
Test Model	RTL8821CE
Manufacturer	Realtek Semiconductor Corp.
Address	No.2,Innovation Road II, Hsinchu Science Park, Hsinchu 300, Taiwan
Standard(s)	<p><b>ANSI Std C95.1-1992</b> Safety Levels with Respect to Human Exposure to Radio Frequency Electromagnetic Fields, 3 kHz – 300 GHz.( IEEE Std C95.1-1991)</p> <p><b>IEEE Std 1528-2013</b> Recommended Practice for Determining the Peak Spatial-Average Specific Absorption Rate (SAR) in the Human Head from Wireless Communications Devices: Measurement Techniques</p> <p><b>KDB616217 D04</b> SAR for laptop and tablets v01r02</p> <p><b>KDB447498 D01</b> General RF Exposure Guidance v06</p> <p><b>KDB248227 D01</b> 802. 11 Wi-Fi SAR v02r02</p> <p><b>KDB865664 D01</b> SAR measurement 100 MHz to 6 GHz v01r04</p> <p><b>KDB865664 D02</b> SAR Reporting v01r02</p> <p><b>KDB690783 D01</b> SAR Listings on Grants v01r03</p>

The above equipment has been tested and found compliance with the requirement of the relative standards by BTL Inc.

The test data, data evaluation, and equipment configuration contained in our test report (Ref No. BTL-FCC SAR-1-1801C263) were obtained utilizing the test procedures, test instruments, test sites that has been accredited by the Authority of TAF according to the ISO-17025 quality assessment standard and technical standard(s).

## 2. RF EMISSIONS MEASUREMENT

### 2.1 TEST FACILITY

The test facilities used to collect the test data in this report is **SAR room** at the location of No.3,Jinshagang 1st Road, ShiXia, Dalang Town, Dong Guan, China.523792

### 2.2 MEASUREMENT UNCERTAINTY

Note: Per KDB865664 D01 SAR Measurement 100 MHz to 6 GHz, when the highest measured1-g SAR within a frequency band is  $< 1.5 \text{ W/kg}$ , the extensive SAR measurement uncertainty analysis described in IEEE Std 1528-2013 is not required in SAR reports submitted for equipment approval. The equivalent ratio (1.5/1.6) is applied to extremity and occupational exposure conditions.

### 3. GENERAL INFORMATION

#### 3.1 STATEMENT OF COMPLIANCE

##### Tablet Mode

Equipment Class	Mode	Highest Body SAR-1g(W/kg) For Main Ant	Highest Body SAR-1g(W/kg) For Aux Ant
DTS	2.4G WLAN	0.39	0.16
NII	5.2G WLAN	N/A	N/A
	5.3G WLAN	1.09	1.10
	5.6G WLAN	1.30	0.98
	5.8G WLAN	1.19	0.74
DSS	Bluetooth	N/A	N/A

##### NB Mode

Equipment Class	Mode	Highest Body SAR-1g(W/kg) For Main Ant	Highest Body SAR-1g(W/kg) For Aux Ant
DTS	2.4G WLAN	0.11	0.04
NII	5.2G WLAN	N/A	N/A
	5.3G WLAN	0.27	0.31
	5.6G WLAN	0.38	0.27
	5.8G WLAN	0.37	0.37
DSS	Bluetooth	N/A	N/A

##### Note:

The device is in compliance with Specific Absorption Rate(SAR)for general population uncontrolled exposure limits according to the FCC rule §2.1093, the ANSI C95.1:1992/IEEE C95.1:1991, the NCRP Report Number 86 for uncontrolled environment, and had been tested in accordance with the measurement methods and procedures specified in IEEE Std 1528-2013



### 3.2 GENERAL DESCRIPTION OF EUT

Equipment	802.11a/b/g/n/ac RTL8821CE Combo module			
Test Model	RTL8821CE			
Modulation	WiFi(DSSS/OFDM),BT(GFSK/ $\pi$ /4-DQPSK/8-DPSK)			
Operation Frequency Range(s)	Band	TX (MHz)		RX (MHz)
	Bluetooth	2400~2483.5		
	2.4G WLAN	2400~2480		
	5.2G WLAN	5150-5250		
	5.3G WLAN	5250-5350		
	5.6G WLAN	5470-5725		
	5.8G WLAN	5725-5850		
Test Channels (low-mid-high):	Band	Channel		
	2.4G WLAN	1-6-11		
	5.2G WLAN	36-40-44-48		
	5.3G WLAN	52-56-60-64		
	5.6G WLAN	100-104-108-112-116-132-136-140		
	5.8G WLAN	149-153-157-161-165		
	BT	0-39-78		
Antenna Gain	Band	Main Ant (dBi)	Aux Ant (dBi)	Vendor
	2.4G	0.39	1.22	Speed Wireless Technical Co., LTD.
	5.2G	-1.3	-1.96	
	5.3G	-1.3	-1.82	
	5.6G	0.4	-0.73	
	5.8G	0.4	-0.16	
	2.4G	1.03	0.52	HongBo
	5.2G	-1.61	1.08	
	5.3G	-1.57	0.26	
	5.6G	-1.19	-0.35	
	5.8G	0.72	-3.18	

Note: Implementation in the following platform

Model: Lenovo ideapad FLEX 6-14IKB, Lenovo ideapad FLEX 6-14ARR

Product name: Notebook / tablet computer

Brand name: Lenovo

### 3.3 LABORATORY ENVIRONMENT

Temperature	Min. = 18°C, Max. = 25°C
Relative humidity	Min. = 30%, Max. = 70%
Ground system resistance	< 0.5 $\Omega$
Ambient noise is checked and found very low and in compliance with requirement of standards. Reflection of surrounding objects is minimized and in compliance with requirement of standards.	

### 3.4 MAIN TEST INSTRUMENTS

Item	Equipment	Manufacturer	Model	Serial No.	Cal. Date	Cal. Interval
1	Data Acquisition Electronics	Speag	DAE4	1390	Sep. 15, 2017	1 Year
2	E-field Probe	Speag	EX3DV4	7396	May 25, 2017	1 Year
3	Electro Optical Converter	Speag	ECO90	1151	N/A	N/A
4	System Validation Dipole	Speag	D2450V2	919	Sep. 28, 2015	3 Years
5	System Validation Dipole	Speag	D5GHzV2	1160	Oct. 05, 2015	3 Years
6	ELI4 Phantom	Speag	ELI4 Phantom V5.0	1222	N/A	N/A
7	Power Amplifier	Mini-Circuits	ZHL-42W+	QA1333003	N/A	N/A
8	Power Amplifier	Mini-Circuits	ZVE-8G+	520701341	N/A	N/A
9	ENA Network Analyzer	Agilent	E5071C	MY46102965	Mar. 26, 2017	1 Year
10	MXG Analog Signal Generator	Agilent	N5181A	MY49060477	Jun. 30, 2017	1 Year
11	P-series power meter	Agilent	N1911A	MY45100473	Aug. 20, 2017	1 Year
12	wideband power sensor	Agilent	N1921A	MY51100041	Aug. 20, 2017	1 Year
13	power Meter	Anritsu	ML2495A	1128009	Mar. 26, 2017	1 Year
14	Pulse Power Sensor	Anritsu	MA 2411B	1027500	Mar. 26, 2017	1 Year
15	Dielectric Assessment Kit	Speag	DAK-3.5	1226	N/A	N/A
16	Dual directional coupler	Woken	TS-PCC0M-05	107090019	May 16, 2017	1 Year

Note:

1." N/A" denotes no model name, serial No. or calibration specified.

2.

1) Per KDB865664 D01 requirements for dipole calibration, the test laboratory has adopted three-year extended calibration interval. Each measured dipole is expected to evaluate with the following criteria at least on annual interval in Appendix C.

a) There is no physical damage on the dipole;

b) System check with specific dipole is within 10% of calibrated value;

c) The most recent return-loss result , measured at least annually, deviates by no more than 20% from the previous measurement;

d) The most recent measurement of the real or imaginary parts of the impedance, measured at least annually is within  $5 \Omega$  from the previous measurement.

2) Network analyzer probe calibration against air, distilled water and a short block performed before measuring liquid parameters.

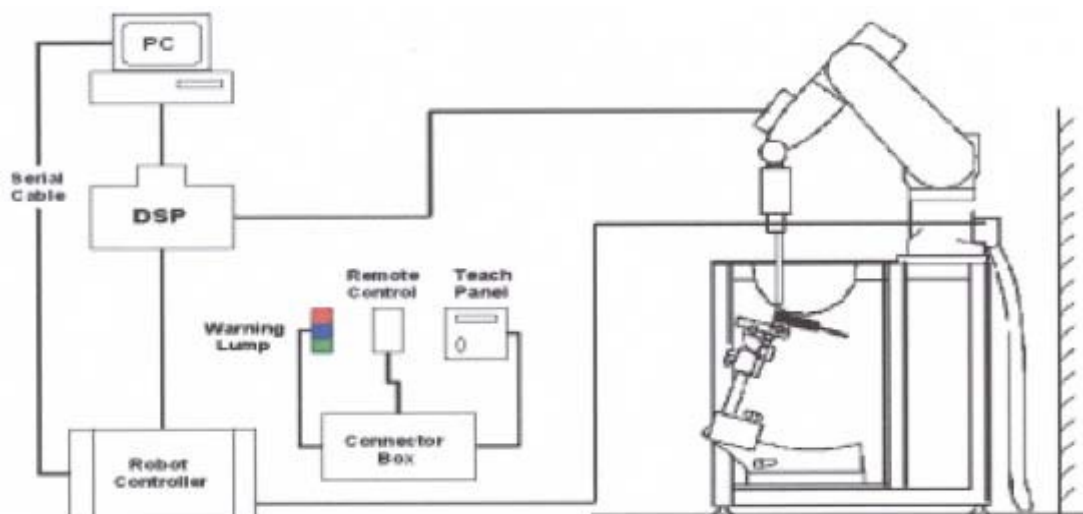
## 4. SAR MEASUREMENTS SYSTEM CONFIGURATION

### 4.1 SAR MEASUREMENT SET-UP

The DASY5 system for performing compliance tests consists of the following items:

1. A standard high precision 6-axis robot (Stäubli RX family) with controller and software. An arm extension for accommodating the data acquisition electronics (DAE).
2. A dosimetric probe, i.e. an isotropic E-field probe optimized and calibrated for usage in tissue simulating liquid. The probe is equipped with an optical surface detector system.
3. A data acquisition electronic (DAE) which performs the signal amplification, signal multiplexing, AD-conversion, offset measurements, mechanical surface detection, collision detection, etc. The unit is battery powered with standard or rechargeable batteries. The signal is optically transmitted to the EOC.
4. A unit to operate the optical surface detector which is connected to the EOC.
5. The Electro-Optical Coupler (EOC) performs the conversion from the optical into a digital electric signal of the DAE. The EOC is connected to the DASY5 measurement server.
6. The DASY5 measurement server, which performs all real-time data evaluation for field measurements and surface detection, controls robot movements and handles safety operation. A computer operating Windows 7
7. DASY5 software and SEMCAD data evaluation software.
8. Remote control with teach panel and additional circuitry for robot safety such as warning lamps, etc.
9. The generic twin phantom enabling the testing of left-hand and right-hand usage.
10. The device holder for handheld mobile phones.
11. Tissue simulating liquid mixed according to the given recipes.
12. System validation dipoles allowing to validate the proper functioning of the system.

#### 4.1.1 Test Setup Layout



## 4.2 DASY5E-FIELDPROBESYSTEM

The SAR measurements were conducted with the dosimetric probe EX3DV4(manufactured by SPEAG), designed in the classical triangular configuration and optimized for dosimetric evaluation.

### 4.2.1 EX3DV4 PROBE SPECIFICATION

Construction	Symmetrical design with triangular core Interleaved sensors Built-in shielding against static charges PEEK enclosure material (resistant to organic solvents, e.g., DGBE)
Calibration	ISO/IEC 17025 calibration service available
Frequency	10 MHz to 6 GHz Linearity: $\pm 0.2$ dB (30 MHz to 6 GHz)
Directivity	$\pm 0.3$ dB in HSL (rotation around probe axis) $\pm 0.5$ dB in tissue material (rotation normal to probe axis)
Dynamic Range	10 $\mu$ W/g to > 100 mW/g Linearity: $\pm 0.2$ dB
Dimensions	Overall length: 330 mm (Tip: 20 mm) Tip diameter: 2.5 mm (Body: 12 mm) Distance from probe tip to dipole centers: 1.0 mm



EX3DV4 E-field Probe

#### 4.2.2 E-FIELD PROBE CALIBRATION

Each probe is calibrated according to a dosimetric assessment procedure with accuracy better than  $\pm 10\%$ . The spherical isotropy was evaluated and found to be better than  $\pm 0.25\text{dB}$ . The sensitivity parameters (NormX, NormY, NormZ), the diode compression parameter (DCP) and the conversion factor (ConvF) of the probe are tested.

The free space E-field from amplified probe outputs is determined in a test chamber. This is performed in a TEM cell for frequencies below 1 GHz, and in a wave guide above 1 GHz for free space. For the free space calibration, the probe is placed in the volumetric center of the cavity and at the proper orientation with the field. The probe is then rotated 360 degrees.

E-field temperature correlation calibration is performed in a flat phantom filled with the appropriate simulated brain tissue. The measured free space E-field in the medium correlates to temperature rise in a dielectric medium. For temperature correlation calibration a RF transparent thermostat-based temperature probe is used in conjunction with the E-field probe.

$$\text{SAR} = C \frac{\Delta T}{\Delta t}$$

Where:  $\Delta t$ =Exposure time(30 seconds),

C =Heat capacity of tissue (brain or muscle),

$\Delta T$ =Temperature increase due to RF exposure.

Or 
$$\text{SAR} = \frac{|E|^2 \sigma}{\rho}$$

Where:  $\sigma$ = Simulated Tissue Conductivity,

$\rho$ =Tissue density (kg/m<sup>3</sup>).


### 4.2.3 OTHER TEST EQUIPMENT

#### 4.2.3.1. Device Holder for Transmitters

**Construction:** Simple but effective and easy-to-use extension for Mounting Device that facilitates the testing of larger devices (e.g., laptops, cameras, etc.) It is light weight and fits easily on the upper part of the Mounting Device in place of the phone positioner. The extension is fully compatible with the Twin SAM, ELI4 and SAM v6.0 Phantoms.

**Material:** POM, Acrylic glass, Foam

#### 4.2.3.2 Phantom

Model	ELI4 Phantom	
Construction	Phantom for compliance testing of handheld and body-mounted wireless devices in the frequency range of 30 MHz to 6 GHz. ELI is fully compatible with the IEC 62209-2 standard and all known tissue simulating liquids. ELI has been optimized regarding its performance and can be integrated into our standard phantom tables. A cover prevents evaporation of the liquid. Reference markings on the phantom allow installation of the complete setup, including all predefined phantom positions and measurement grids, by teaching three points. The phantom is compatible with all SPEAG dosimetric probes and dipoles.	
Shell Thickness	2±0.1 mm	
Filling Volume	Approx. 30 liters	
Dimensions	Length: 600 mm ; Width: 190mm Height: adjustable feet	
Available	Special	

#### 4.2.4 SCANNING PROCEDURE

The DASY5 installation includes predefined files with recommended procedures for measurements and validation. They are read-only document files and destined as fully defined but unmeasured masks. All test positions (head or body-worn) are tested with the same configuration of test steps differing only in the grid definition for the different test positions.

The “reference” and “drift” measurements are located at the beginning and end of the batch process. They measure the field drift at one single point in the liquid over the complete procedure. The indicated drift is mainly the variation of the DUT’s output power and should vary max.  $\pm 5\%$ .

The “surface check” measurement tests the optical surface detection system of the DASY5 system by repeatedly detecting the surface with the optical and mechanical surface detector and comparing the results. The output gives the detecting heights of both systems, the difference between the two systems and the standard deviation of the detection repeatability. Air bubbles or refraction in the liquid due to separation of the sugar-water mixture gives poor repeatability (above  $\pm 0.1\text{mm}$ ). To prevent wrong results tests are only executed when the liquid is free of air bubbles. The difference between the optical surface detection and the actual surface depends on the probe and is specified with each probe. (It does not depend on the surface reflectivity or the probe angle to the surface within  $\pm 30^\circ$ .)

- Area Scan

The “area scan” measures the SAR above the DUT or verification dipole on a parallel plane to the surface. It is used to locate the approximate location of the peak SAR with 2D spline interpolation. The robot performs a stepped movement along one grid axis while the local electrical field strength is measured by the probe. The probe is touching the surface of the SAM during acquisition of measurement values. The standard scan uses large grid spacing for faster measurement. Standard grid spacing for head measurements is 15 mm in x- and y- dimension ( $\leq 2\text{GHz}$ ), 12 mm in x- and y- dimension (2-4 GHz) and 10mm in x- and y- dimension (4-6GHz). If a finer resolution is needed, the grid spacing can be reduced. Grid spacing and orientation have no influence on the SAR result. For special applications where the standard scan method does not find the peak SAR within the grid, e.g. mobile phones with flip cover, the grid can be adapted in orientation.

- Zoom Scan

A “zoom scan” measures the field in a volume around the 2D peak SAR value acquired in the previous “coarse” scan. This is a fine grid with maximum scan spatial resolution:  $\Delta x_{\text{zoom}}, \Delta y_{\text{zoom}} \leq 2\text{GHz} \rightarrow \leq 8\text{mm}$ , 2-4GHz  $\rightarrow \leq 5\text{ mm}$  and 4-6 GHz  $\rightarrow \leq 4\text{mm}$ ;  $\Delta z_{\text{zoom}} \leq 3\text{GHz} \rightarrow \leq 5\text{ mm}$ , 3-4 GHz  $\rightarrow \leq 4\text{mm}$  and 4-6GHz  $\rightarrow \leq 2\text{mm}$  where the robot additionally moves the probe along the z-axis away from the bottom of the Phantom. DASY is also able to perform repeated zoom scans if more than 1 peak is found during area scan. In this document, the evaluated peak 1g and 10g averaged SAR values are shown in the 2D-graphics in Appendix B. Test results relevant for the specified standard (see chapter 1.4.) are shown in table form in chapter 7.2.

A Z-axis scan measures the total SAR value at the x-and y-position of the maximum SAR value found during the cube scan. The probe is moved away in z-direction from the bottom of the SAM phantom in 2 mm steps. This measurement shows the continuity of the liquid and can - depending in the field strength – also show the liquid depth.



The following table summarizes the area scan and zoom scan resolutions per FCC KDB 865664D01:

Frequency	Maximun Area Scan resolution ( $\Delta x_{\text{area}}, \Delta y_{\text{area}}$ )	Maximun Zoom Scan spatial resolution ( $\Delta x_{\text{Zoom}}, \Delta y_{\text{Zoom}}$ )	Maximun Zoom Scan spatial resolution			Minimum zoom scan volume (x,y,z)
			Uniform Grid	Graded Grad		
			$\Delta z_{\text{Zoom}}(n)$	$\Delta z_{\text{Zoom}}(1)^*$	$\Delta z_{\text{Zoom}}(n>1)^*$	
$\leq 2\text{GHz}$	$\leq 15\text{mm}$	$\leq 8\text{mm}$	$\leq 5\text{mm}$	$\leq 4\text{mm}$	$\leq 1.5^* \Delta z_{\text{Zoom}}(n-1)$	$\geq 30\text{mm}$
2-3GHz	$\leq 12\text{mm}$	$\leq 5\text{mm}$	$\leq 5\text{mm}$	$\leq 4\text{mm}$	$\leq 1.5^* \Delta z_{\text{Zoom}}(n-1)$	$\geq 30\text{mm}$
3-4GHz	$\leq 12\text{mm}$	$\leq 5\text{mm}$	$\leq 4\text{mm}$	$\leq 3\text{mm}$	$\leq 1.5^* \Delta z_{\text{Zoom}}(n-1)$	$\geq 28\text{mm}$
4-5GHz	$\leq 10\text{mm}$	$\leq 4\text{mm}$	$\leq 3\text{mm}$	$\leq 2.5\text{mm}$	$\leq 1.5^* \Delta z_{\text{Zoom}}(n-1)$	$\geq 25\text{mm}$
5-6GHz	$\leq 10\text{mm}$	$\leq 4\text{mm}$	$\leq 2\text{mm}$	$\leq 2\text{mm}$	$\leq 1.5^* \Delta z_{\text{Zoom}}(n-1)$	$\geq 22\text{mm}$

#### 4.2.5 SPATIAL PEAK SAR EVALUATION

The spatial peak SAR - value for 1 and 10 g is evaluated after the Cube measurements have been done. The basis of the evaluation are the SAR values measured at the points of the fine cube grid consisting of 5 x 5 x 7 points( with 8mm horizontal resolution) or 7 x 7 x 7 points( with 5mm horizontal resolution) or 8 x 8 x 7 points( with 4mm horizontal resolution). The algorithm that finds the maximal averaged volume is separated into three different stages.

- The data between the dipole center of the probe and the surface of the phantom are extrapolated. This data cannot be measured since the center of the dipole is 2.7 mm away from the tip of the probe and the distance between the surface and the lowest measuring point is about 1 mm (see probe calibration sheet). The extrapolated data from a cube measurement can be visualized by selecting "Graph Evaluated".
- The maximum interpolated value is searched with a straight-forward algorithm. Around this maximum the SAR - values averaged over the spatial volumes (1g or 10 g) are computed using the 3d-spline interpolation algorithm. If the volume cannot be evaluated (i.e., if a part of the grid was cut off by the boundary of the measurement area) the evaluation will be started on the corners of the bottom plane of the cube.
- All neighboring volumes are evaluated until no neighboring volume with a higher average value is found.

#### Extrapolation

The extrapolation is based on a least square algorithm [W. Gander, Computermathematik, p.168-180]. Through the points in the first 3 cm along the z-axis, polynomials of order four are calculated. These polynomials are then used to evaluate the points between the surface and the probe tip. The points, calculated from the surface, have a distance of 1 mm from each other.

#### Interpolation

The interpolation of the points is done with a 3d-Spline. The 3d-Spline is composed of three one-dimensional splines with the "Not a knot"-condition [W. Gander, Computer mathematic, p.141-150] (x, y and z -direction) [Numerical Recipes in C, Second Edition, p.123ff].

#### Volume Averaging

At First the size of the cube is calculated. Then the volume is integrated with the trapezoidal algorithm. 8000 points (20x20x20) are interpolated to calculate the average.

#### Advanced Extrapolation

DASY5 uses the advanced extrapolation option which is able to compensate boundary effects on E-field probes.

## 4.2.6 DATA STORAGE AND EVALUATION

### 4.2.6.1 Data Storage

The DASY5 software stores the acquired data from the data acquisition electronics as raw data (in microvolt readings from the probe sensors), together with all necessary software parameters for the data evaluation (probe calibration data, liquid parameters and device frequency and modulation data) in measurement files with the extension “.DAE4”. The software evaluates the desired unit and format for output each time the data is visualized or exported. This allows verification of the complete software setup even after the measurement and allows correction of incorrect parameter settings. For example, if a measurement has been performed with a wrong crest factor parameter in the device setup, the parameter can be corrected afterwards and the data can be re-evaluated.

The measured data can be visualized or exported in different units or formats, depending on the selected probe type ([V/m], [A/m], [°C], [mW/g], [mW/cm<sup>2</sup>], [dBrel], etc.). Some of these units are not available in certain situations or show meaningless results, e.g., a SAR output in a lossless media will always be zero. Raw data can also be exported to perform the evaluation with other software packages.

#### 4.2.7 Data Evaluation by SEMCAD

The SEMCAD software automatically executes the following procedures to calculate the field units from the microvolt readings at the probe connector. The parameters used in the evaluation are stored in the configuration modules of the software:

Probe parameters:	Sensitivity	Normi, $a_{i0}$ , $a_{i1}$ , $a_{i2}$
	Conversion factor	ConvF <sub>i</sub>
	Diode compression point	Dcp <sub>i</sub>
Device parameters:	Frequency	f
	Crest factor	cf
Media parameters:	Conductivity	
	Density	

These parameters must be set correctly in the software. They can be found in the component documents or they can be imported into the software from the configuration files issued for the DASY5 components. In the direct measuring mode of the multi meter option, the parameters of the actual system setup are used. In the scan visualization and export modes, the parameters stored in the corresponding document files are used.

The first step of the evaluation is a linearization of the filtered input signal to account for the compression characteristics of the detector diode. The compensation depends on the input signal, the diode type and the DC-transmission factor from the diode to the evaluation electronics.

If the exciting field is pulsed, the crest factor of the signal must be known to correctly compensate for peak power. The formula for each channel can be given as:

$$V_i = U_i + U_i^2 \cdot cf / dcp_i$$

With	$V_i$ = compensated signal of channel i	( i = x, y, z )
	$U_i$ = input signal of channel i	( i = x, y, z )
	cf = crest factor of exciting field	(DASY parameter)
	dcp <sub>i</sub> = diode compression point	(DASY parameter)

From the compensated input signals the primary field data for each channel can be evaluated:

$$\text{E-field probes: } E_i = ( V_i / \text{Norm}_i \cdot \text{ConvF} )^{1/2}$$

$$\text{H-field probes: } H_i = ( V_i )^{1/2} \cdot ( a_{i0} + a_{i1} f + a_{i2} f^2 ) / f$$

With  $V_i$  = compensated signal of channel i ( i = x, y, z )

$\text{Norm}_i$  = sensor sensitivity of channel i ( i = x, y, z )  
[mV/(V/m)<sup>2</sup>] for E-field Probes

$\text{ConvF}$  = sensitivity enhancement in solution

$a_{ij}$  = sensor sensitivity factors for H-field probes

$f$  = carrier frequency [GHz]

$E_i$  = electric field strength of channel i in V/m

$H_i$  = magnetic field strength of channel i in A/m

The RSS value of the field components gives the total field strength (Hermitian magnitude):

$$E_{\text{tot}} = (E_x^2 + E_y^2 + E_z^2)^{1/2}$$

The primary field data are used to calculate the derived field units.

$$\text{SAR} = (E_{\text{tot}})^2 \cdot \sigma / (\rho \cdot 1000)$$

With  $\text{SAR}$  = local specific absorption rate in mW/g

$E_{\text{tot}}$  = total field strength in V/m  
= conductivity in [mho/m] or [Siemens/m]  
= equivalent tissue density in g/cm<sup>3</sup>

Note that the density is normally set to 1 (or 1.06), to account for actual brain density rather than the density of the simulation liquid. The power flow density is calculated assuming the excitation field to be a free space field.

$$P_{\text{pwe}} = E_{\text{tot}}^2 / 3770 \text{ or } P_{\text{pwe}} = H_{\text{tot}}^2 \cdot 37.7$$

With  $P_{\text{pwe}}$  = equivalent power density of a plane wave in mW/cm<sup>2</sup>

$E_{\text{tot}}$  = total field strength in V/m

$H_{\text{tot}}$  = total magnetic field strength in A/m

## 5. SYSTEM VERIFICATION PROCEDURE

### 5.1 TISSUE VERIFICATION

The simulating liquids should be checked at the beginning of a series of SAR measurements to determine if the dielectric parameters are within the tolerances of the specified target values. The measured conductivity and relative permittivity should be within  $\pm 5\%$  of the target values.

The following materials are used for producing the tissue-equivalent materials.

Tissue Type	Bactericide	DGBE	HEC	NaCl	Sucrose	Triton X-100	Water	Diethylene Glycol Mono-hexylether
Body 750	0.2	-	0.2	0.8	48.8	-	50.0	-
Body 835	0.2	-	0.2	0.9	48.5	-	50.2	-
Body 1750	-	31.0	-	0.2	-	-	68.8	-
Body 1900	-	29.5	-	0.3	-	-	70.2	-
Body 2000	-	30.0	-	0.2	-	-	69.8	-
Body 2450	-	31.4	-	0.1	-	-	68.5	-
Body 2600	-	31.8	-	0.1	-	-	68.1	-
Body 5G	-	-	-	-	-	10.7	78.6	10.7

Salt: 99+% Pure Sodium Chloride; Sugar: 98+% Pure Sucrose; Water: De-ionized, 16M + resistivity  
 HEC: Hydroxyethyl Cellulose; DGBE: 99+% Di(ethylene glycol) butyl ether, [2-(2-butoxyethoxy)ethanol]  
 Triton X-100(ultra pure): Polyethylene glycol mono [4-(1,1,3,3-tetramethylbutyl)phenyl]ether

Tissue Verification									
Tissue Type	Frequency (MHz)	Liquid Temp. (°C)	Conductivity ( $\sigma$ )	Permittivity ( $\epsilon_r$ )	Targeted Conductivity ( $\sigma$ )	Targeted Permittivity ( $\epsilon_r$ )	Deviation Conductivity ( $\sigma$ ) (%)	Deviation Permittivity ( $\epsilon_r$ ) (%)	Date
Body	2450	22.5	1.967	53.133	1.95	52.7	0.87	0.82	Mar. 10, 2018
Body	5300	22.3	5.494	47.443	5.42	48.9	1.37	-2.98	Mar. 11, 2018
Body	5300	22.4	5.481	47.372	5.42	48.9	1.13	-3.12	Mar. 12, 2018
Body	5600	22.3	5.900	46.819	5.77	48.5	2.25	-3.47	Mar. 11, 2018
Body	5600	22.4	5.885	46.750	5.77	48.5	1.99	-3.61	Mar. 12, 2018
Body	5800	22.3	6.178	46.487	6.00	48.2	2.97	-3.55	Mar. 11, 2018
Body	5800	22.4	6.162	46.418	6.00	48.2	2.70	-3.70	Mar. 12, 2018

Note:

- 1)The dielectric parameters of the tissue-equivalent liquid should be measured under similar ambient conditions and within 2 °C of the conditions expected during the SAR evaluation to satisfy protocol requirements.
- 2)KDB 865664 was ensured to be applied for probe calibration frequencies greater than or equal to 50MHz of the EUT frequencies.
- 3)The above measured tissue parameters were used in the DASY software to perform interpolation via the DASY software to determine actual dielectric parameters at the test frequencies. The SAR test plots may slightly differ from the table above since the DASY rounds to three significant digits.

## 5.2 SYSTEM CHECK

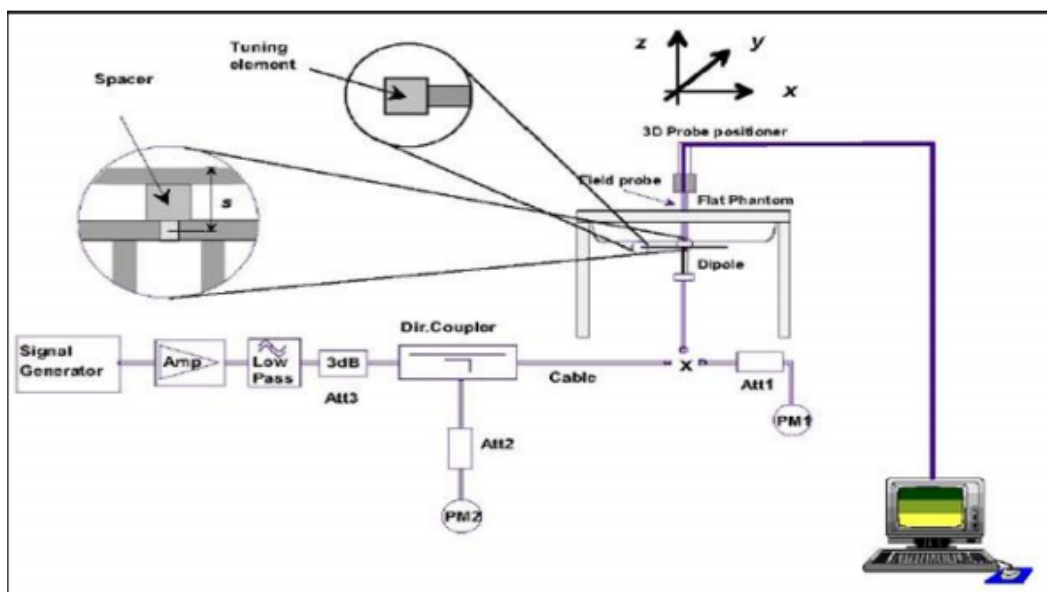
The system check is performed for verifying the accuracy of the complete measurement system and performance of the software. The system check is performed with tissue equivalent material according to IEEE P1528 (described above). The following table shows system check results for all frequency bands and tissue liquids used during the tests.

System Check	Frequency (MHz)	Date	Targeted SAR-1g (W/kg)	Measured SAR-1g (W/kg)	normalized SAR-1g (W/kg)	Deviation (%)	Dipole S/N
Body	2450	Mar. 10, 2018	51.10	12.80	51.20	0.20	919
Body	5300	Mar. 11, 2018	78.40	7.49	74.90	-4.46	1160
Body	5300	Mar. 12, 2018	78.40	7.46	74.60	-4.85	1160
Body	5600	Mar. 11, 2018	81.50	7.76	77.60	-4.79	1160
Body	5600	Mar. 12, 2018	81.50	7.89	78.90	-3.19	1160
Body	5800	Mar. 11, 2018	78.30	7.56	75.60	-3.45	1160
Body	5800	Mar. 12, 2018	78.30	7.72	77.20	-1.40	1160

## 5.3 SYSTEM CHECK PROCEDURE

The system check is performed by using a system check dipole which is positioned parallel to the planar part of the SAM phantom at the reference point. The distance of the dipole to the SAM phantom is determined by a plexiglass spacer. The dipole is connected to the signal source consisting of signal generator and amplifier via a directional coupler, N-connector cable and adaption to SMA. It is fed with a power of 250 mW (below 5GHz) or 100mW (above 5GHz). To adjust this power a power meter is used. The power sensor is connected to the cable before the system check to measure the power at this point and do adjustments at the signal generator. At the outputs of the directional coupler both return loss as well as forward power are controlled during the system check to make sure that emitted power at the dipole is kept constant. This can also be checked by the power drift measurement after the test.

System check results have to be equal or near the values determined during dipole calibration (target SAR in table above) with the relevant liquids and test system ( $\pm 10\%$ ).



## 6. SAR MEASUREMENT VARIABILITY AND UNCERTAINTY

### 6.1 SAR MEASUREMENT VARIABILITY

Per KDB865664 D01 SAR measurement 100 MHz to 6 GHz, SAR measurement variability must be assessed for each frequency band, which is determined by the SAR probe calibration point and tissue-equivalent medium used for the device measurements. The additional measurements are repeated after the completion of all measurements requiring the same head or body tissue-equivalent medium in a frequency band. The test device should be returned to ambient conditions (normal room temperature) with the battery fully charged before it is re-mounted on the device holder for the repeated measurement(s) to minimize any unexpected variations in the repeated results.

- 1) Repeated measurement is not required when the original highest measured SAR is  $< 0.80$  W/kg; steps 2) through 4) do not apply.
- 2) When the original highest measured SAR is  $\geq 0.80$  W/kg, repeat that measurement once.
- 3) Perform a second repeated measurement only if the ratio of largest to smallest SAR for the original and first repeated measurements is  $> 1.20$  or when the original or repeated measurement is  $\geq 1.45$  W/kg ( $\sim 10\%$  from the 1-g SAR limit).
- 4) Perform a third repeated measurement only if the original, first or second repeated measurement is  $\geq 1.5$  W/kg and the ratio of largest to smallest SAR for the original, first and second repeated measurements is  $> 1.20$ .

The same procedures should be adapted for measurements according to extremity and occupational exposure limits by applying a factor of 2.5 for extremity exposure and a factor of 5 for occupational exposure to the corresponding SAR thresholds.

The detailed repeated measurement results are shown in Section 8.2.

## 7. OPERATIONAL CONDITIONS DURING TEST

### 7.1 SAR TEST CONFIGURATION

#### 7.1.1 WIFI TEST CONFIGURATION

For WLAN SAR testing, WLAN engineering testing software installed on the DUT can provide continuous transmitting RF signal.

##### 2.4G

Mode	802.11b	802.11g	802.11n HT20/40
Duty cycle	100%		
Crest factor	1		

##### 5G

Mode	802.11a	802.11n HT20/40	802.11ac VHT20/40/80
Duty cycle	100%		
Crest factor	1		

For WiFi SAR testing, a communication link is set up with the test mode software for WiFi mode test. During the test, at the each test frequency channel, the EUT is operated at the RF continuous emission mode. The RF signal utilized in SAR measurement has 100% duty cycle and its crest factor is 1. The test procedures in KDB 248227 D01 are applied.

#### 7.1.1.1 2.4G SAR TEST REQUIREMENTS

##### 802.11b DSSS SAR Test Requirements

SAR is measured for 2.4 GHz 802.11b DSSS using either a fixed test position or, when applicable, the initial test position procedure. SAR test reduction is determined according to the following:

- 1) When the reported SAR of the highest measured maximum output power channel for the exposure configuration is  $\leq 0.8$  W/kg, no further SAR testing is required for 802.11b DSSS in that exposure configuration.
- 2) When the reported SAR is  $> 0.8$  W/kg, SAR is required for that exposure configuration using the next highest measured output power channel. When any reported SAR is  $> 1.2$  W/kg, SAR is required for the third channel; i.e., all channels require testing.

##### 2.4 GHz 802.11g/n OFDM SAR Test Exclusion Requirements

When SAR measurement is required for 2.4 GHz 802.11g/n OFDM configurations, the measurement and test reduction procedures for OFDM are applied. SAR is not required for the following 2.4 GHz OFDM conditions.

- 1) When KDB Publication 447498 SAR test exclusion applies to the OFDM configuration.
- 2) When the highest reported SAR for DSSS is adjusted by the ratio of OFDM to DSSS specified maximum output power and the adjusted SAR is  $\leq 1.2$  W/kg.

##### SAR Test Requirements for OFDM configurations

When SAR measurement is required for 2.4 GHz 802.11g/n OFDM configurations, each standalone And frequency aggregated band is considered separately for SAR test reduction. In applying the initial test configuration and subsequent test configuration procedures, the 802.11 transmission configuration with the highest specified maximum output power and the channel within a test configuration with the highest measured maximum output power should be clearly distinguished to apply the procedures.



### 7.1.1.2 5G SAR TEST REQUIREMENTS

#### ✧ U-NII-1 and U-NII-2A Band

For devices that operate in both U-NII-1 and U-NII-2A bands, when the same maximum output power is specified for both bands, begin SAR measurement in U-NII-2A band by applying the OFDM SAR requirements. If the highest reported SAR for a test configuration is  $\leq 1.2$  W/kg, SAR is not required for U-NII-1 band for that configuration (802.11 mode and exposure condition); otherwise, both bands are tested independently for SAR. When different maximum output power is specified for the bands, begin SAR measurement in the band with higher specified maximum output power. The highest reported SAR for the tested configuration is adjusted by the ratio of lower to higher specified maximum output power for the two bands. When the adjusted SAR is  $\leq 1.2$  W/kg, SAR is not required for the band with lower maximum output power in that test configuration; otherwise, both bands are tested independently for SAR.

#### ✧ U-NII-2C, U-NII-3 Bands

The frequency range covered by these bands is 380 MHz (5.47 – 5.85 GHz), which requires a minimum of at least two SAR probe calibration frequency points to support SAR measurements. When Terminal Doppler Weather Radar (TDWR) restriction applies, the channels at 5.60 – 5.65 GHz in U-NII-2C band must be disabled with acceptable mechanisms and documented in the equipment certification.

Unless band gap channels are permanently disabled, they must be considered for SAR testing. To maintain SAR measurement accuracy and to facilitate test reduction, the channels in U-NII-2C band above 5.65 GHz may be grouped with the 5.8 GHz channels in U-NII-3 or §15.247 band to enable two SAR probe calibration frequency points to cover the bands, including the band gap channels.<sup>11</sup> When band gap channels are supported and the bands are not aggregated for SAR testing, band gap channels must be considered independently in each band according to the normally required OFDM SAR measurement and probe calibration frequency points requirements.

### 7.1.1.3 OFDM TRANSMISSION MODE AND SAR TEST CHANNEL SELECTION

For the 2.4GHz and 5GHz bands, when the same maximum output power was specified for multiple OFDM transmission mode configurations in a frequency band or aggregated band, SAR is measured using the configuration with the largest channel bandwidth, lowest order modulation and lowest data rate. When the maximum output power of a channel is the same for equivalent OFDM configurations (for example 802.11a, 802.11n and 802.11ac, or 802.11g and 802.11n, with the same channel bandwidth, modulation, and data rate, etc.), the lower order 802.11 mode (i.e. 802.11a then 802.11n and 802.11ac, or 802.11g then 802.11n) is used for SAR measurement. When the maximum output power are the same for multiple test channels, either according to the default or additional power measurement requirements, SAR is measured using the channel closest to the middle of the frequency band or aggregated band. When there are multiple channels with the same maximum output power, SAR is measured using the higher number channel.

#### 7.1.1.4 INITIAL TEST CONFIGURATION PROCEDURE

For OFDM, in both 2.4G and 5GHz bands, an initial test configuration is determined for each frequency band and aggregated band, according to the transmission mode with the highest maximum output power specified for SAR measurements. When the same maximum output power is specified for multiple OFDM transmission mode configurations in a frequency band or aggregated band, SAR is measured using the configuration(s) with the largest channel bandwidth, lowest order modulation, and lowest data rate. If the average RF output powers of the highest identical transmission modes are within 0.25 dB of each other, mid channel of the transmission mode with highest average RF output powers is the initial test channel. Otherwise, the channel of the transmission mode with the highest average RF output power will be the initial test configuration.

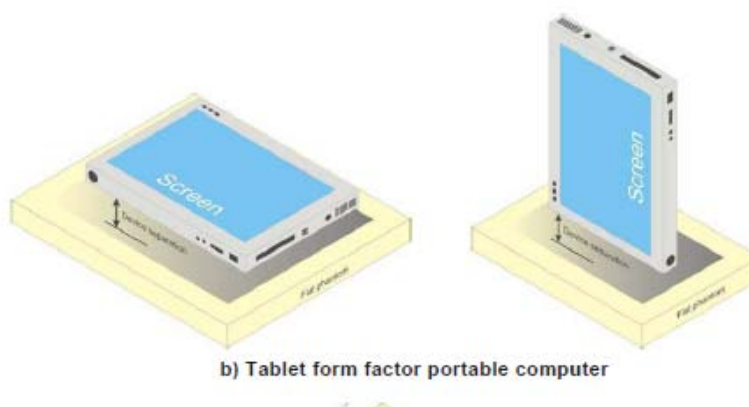
When the reported SAR is  $\leq 0.8$  W/kg, no additional measurements on other test channels are required. Otherwise, SAR is evaluated using the subsequent highest average RF output channel until the reported SAR result is  $\leq 1.2$  W/kg or all channels are measured. When there are multiple untested channels having the same subsequent highest average RF output power, the channel with higher frequency from the lowest 802.11 mode is considered for SAR measurement.

## 7.2 TEST POSITION

### 7.2.1. Tablet Mode

The device does not have telephone receiver. Next to the ear operation is not supported. So the additional Head SAR testing for this device is not required.

Body operating configurations should be tested with the belt-clips and holsters attached to the device and positioned against a flat phantom in normal use configurations. Devices with a headset output should be tested with a headset connected to the device. The distance between the device and the phantom was kept 0mm.



Note1: A separation distance 0mm is commonly used for body tablet, to represent a spacing provided by intended accessories.

The overall diagonal dimension of the display section of a tablet is 39.12cm>20cm, Per FCC KDB 616217, the back surface and edges of the tablet should be tested for SAR compliance with the Tablet touching the phantom. SAR evaluation for the front surface of tablet display screens are generally not necessary.

The SAR Exclusion Threshold in KDB 447498 D01 can be applied to determine SAR test exclusion for adjacent edge configurations. The closest distance from the antenna to an adjacent tablet edge is used to determine if SAR testing is required for the adjacent edges, with the adjacent edge positioned adjacent the phantom and the edge containing the antenna positioned perpendicular to the phantom.

### SAR test reduction and exclusion guidance

(1) The SAR exclusion threshold for distances <50mm is defined by the following equation:

$$\frac{(\text{max. power of channel, including tune-up tolerance, mW})}{(\text{min. test separation distance, mm})} \sqrt{\text{Frequency (GHz)}} \leq 3.0$$

The test exclusions are applicable only when the minimum test separation distance is  $\leq 50\text{mm}$  and for transmission frequencies between 100MHz and 6GHz. When the minimum test separation distance is <5mm, a distance of 5mm according to 5) in section 4.1 is applied to determine SAR test exclusion.

(2) The SAR exclusion threshold for distances >50mm is defined by the following equation, as illustrated in KDB 447498 D01 Appendix B:

a) at 100 MHz to 1500 MHz

$$[\text{Power allowed at numeric Threshold at 50 mm in step 1}) + (\text{test separation distance} - 50 \text{ mm}) \cdot (f_{\text{(MHz)}}/150)] \text{ mW}$$

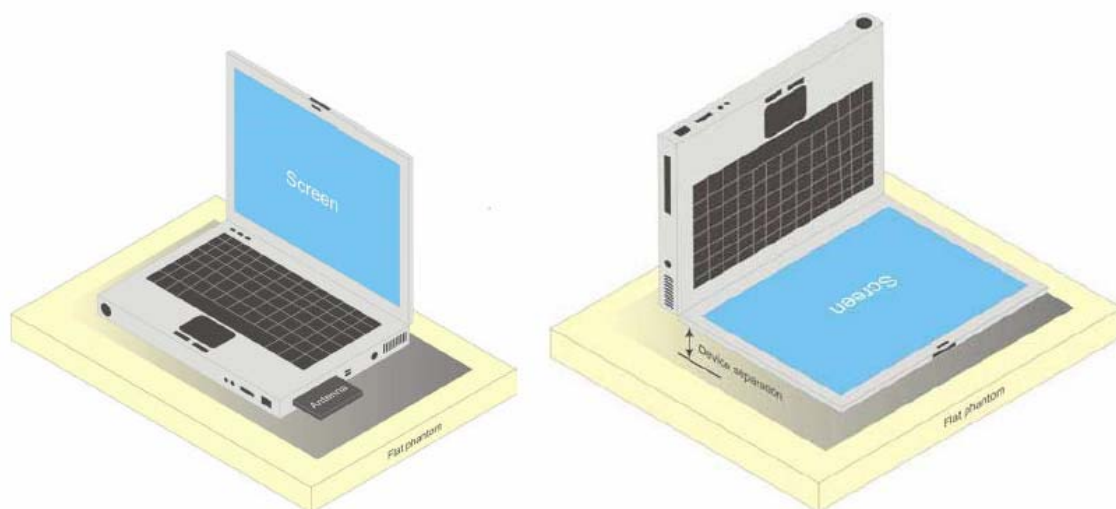
b) at >1500MHz and  $\leq 6\text{GHz}$

$$[\text{Power allowed at numeric Threshold at 50 mm in step 1}) + (\text{test separation distance} - 50 \text{ mm}) \cdot 10] \text{ mW}$$

The location of the antenna inside EUT and standalone SAR test exclusion, please refer to Appendix E.

### 7.2.2. Notebook Mode

This DUT was tested in 2 different positions. They are bottom and back of screen as illustrated below:



## 8. TEST RESULT

### 8.1 CONDUCTED POWER RESULTS

#### 8.1.1 CONDUCTED POWER MEASUREMENTS OF WIFI 2.4G

1) Main Ant

2.4G	Mode	Channel	Frequency(MHz)	Data Rate (Mbps)	Tune up	Average Power(dBm)	SAR Test (Yes/No)
	802.11b	1	2412	1	16.50	16.14	Yes
		6	2437		18.00	17.89	Yes
		11	2462		18.00	17.51	Yes
	802.11g	1	2412	6	16.50	16.46	No
		6	2437		19.00	18.86	No
		11	2462		16.50	16.23	No
	802.11n HT20	1	2412	6.5	15.00	14.89	No
		6	2437		19.00	18.58	No
		11	2462		15.50	15.35	No
	802.11n HT40	3	2422	13.5	14.00	13.85	No
		6	2437		16.00	15.97	No
		9	2452		14.50	14.39	No

Note:

1) The Average conducted power of WiFi is measured with RMS detector.

2) Per KDB248227 D01, for WiFi 2.4GHz, the highest measured maximum output power Channel for DSSS modes (802.11b) was selected for SAR measurement. SAR for OFDM modes(2.4GHz 802.11g/n) was not required When the highest reported SAR for DSSS is adjusted by the ratio of OFDM modes(802.11g/n)to DSSS modes(802.11b)specified maximum output power and the adjusted SAR is  $\leq 1.2$  W/kg.

## 2) Aux Ant

	Mode	Channel	Frequency(MHz)	Data Rate (Mbps)	Tune up	Average Power(dBm)	SAR Test (Yes/No)
2.4G	802.11b	1	2412	1	16.50	16.35	Yes
		6	2437		18.00	17.58	Yes
		11	2462		18.00	17.57	Yes
	802.11g	1	2412	6	16.50	16.41	No
		6	2437		19.00	18.94	No
		11	2462		16.50	16.45	No
	802.11n HT20	1	2412	6.5	15.00	14.63	No
		6	2437		19.00	18.37	No
		11	2462		15.50	15.26	No
	802.11n HT40	3	2422	13.5	14.00	13.85	No
		6	2437		16.00	15.89	No
		9	2452		14.50	14.14	No

### Note:

- 1) The Average conducted power of WiFi is measured with RMS detector.
- 2) Per KDB248227 D01, for WiFi 2.4GHz, the highest measured maximum output power Channel for DSSS modes (802.11b) was selected for SAR measurement. SAR for OFDM modes (2.4GHz 802.11g/n) was not required When the highest reported SAR for DSSS is adjusted by the ratio of OFDM modes(802.11g/n)to DSSS modes (802.11b) specified maximum output power and the adjusted SAR is  $\leq 1.2$  W/kg.

## 8.1.2 CONDUCTED POWER MEASUREMENTS OF WIFI 5.2G

### 1) Main Ant

Band	Mode	Channel	Frequency (MHz)	Data Rate (Mbps)	Tune-up	Average Power(dBm)	SAR Test (Yes/No)
5.2G	802.11a	36	5180	6	17.50	17.13	No
		40	5200		18.00	17.82	No
		44	5220		18.00	17.86	No
		48	5240		17.00	16.94	No
	802.11n HT20	36	5180	6.5	17.50	16.79	No
		40	5200		18.00	17.69	No
		44	5220		18.00	17.76	No
		48	5240		17.00	16.74	No
	802.11n HT40	38	5190	13.5	13.00	12.38	No
		46	5230		17.50	17.39	No
	802.11ac VH20	36	5180	6.5	17.50	16.75	No
		40	5200		18.00	17.71	No
		44	5220		18.00	17.70	No
		48	5240		17.00	16.78	No
	802.11ac VH40	38	5190	13.5	12.50	12.39	No
		46	5230		17.50	17.25	No
	802.11ac VH80	42	5210	29.3	11.50	11.17	No

Note: For WiFi 5.2/5.3GHz, because the same maximum output power is specified for both bands, the WiFi 5.3G was selected for SAR measurement. SAR for WiFi 5.2G was not required When the highest reported SAR for a test configuration is  $\leq 1.2$  W/kg.

## 2) Aux Ant

Band	Mode	Channel	Frequency (MHz)	Data Rate (Mbps)	Tune-up	Average Power(dBm)	SAR Test (Yes/No)
5.2G	802.11a	36	5180	6	17.50	17.03	No
		40	5200		18.00	17.78	No
		44	5220		18.00	17.96	No
		48	5240		17.00	16.87	No
	802.11n HT20	36	5180	6.5	17.50	16.66	No
		40	5200		18.00	17.68	No
		44	5220		18.00	17.77	No
		48	5240		17.00	16.72	No
	802.11n HT40	38	5190	13.5	13.00	12.34	No
		46	5230		17.50	17.23	No
	802.11ac VH20	36	5180	6.5	17.50	16.76	No
		40	5200		18.00	17.72	No
		44	5220		18.00	17.30	No
		48	5240		17.00	16.66	No
	802.11ac VH40	38	5190	13.5	12.50	12.34	No
		46	5230		17.50	17.23	No
	802.11ac VH80	42	5210	29.3	11.50	11.37	No

Note: For WiFi 5.2/5.3GHz, because the same maximum output power is specified for both bands, the WiFi 5.3G was selected for SAR measurement. SAR for WiFi 5.2G was not required When the highest reported SAR for a test configuration is  $\leq 1.2$  W/kg.



### 8.1.3 CONDUCTED POWER MEASUREMENTS OF WIFI 5.3G

#### 1) Main Ant

Band	Mode	Channel	Frequency (MHz)	Data Rate (Mbps)	Tune-up	Average Power(dBm)	SAR Test (Yes/No)
5.3G	802.11a	52	5260	6	18.00	17.84	Yes
		56	5280		18.00	17.93	Yes
		60	5300		18.00	17.84	Yes
		64	5320		16.50	16.13	Yes
	802.11n HT20	52	5260	6.5	18.00	17.89	No
		56	5280		18.00	17.72	No
		60	5300		18.00	17.83	No
		64	5320		16.50	16.02	No
	802.11n HT40	54	5270	13.5	17.50	17.36	No
		62	5310		14.00	13.65	No
	802.11 ac VH20	52	5260	6.5	18.00	17.84	No
		56	5280		18.00	17.73	No
		60	5300		18.00	17.79	No
		64	5320		16.50	16.04	No
	802.11 ac VH40	54	5270	13.5	17.50	17.18	No
		62	5310		13.50	13.26	No
	802.11ac VH80	58	5290	29.3	13.00	12.81	No

## 2) Aux Ant

Band	Mode	Channel	Frequency (MHz)	Data Rate (Mbps)	Tune-up	Average Power(dBm)	SAR Test (Yes/No)
5.3G	802.11a	52	5260	6	18.00	17.53	Yes
		56	5280		18.00	17.84	Yes
		60	5300		18.00	16.42	Yes
		64	5320		16.50	16.38	Yes
	802.11n HT20	52	5260	6.5	18.00	17.76	No
		56	5280		18.00	17.71	No
		60	5300		18.00	17.80	No
		64	5320		16.50	16.13	No
	802.11n HT40	54	5270	13.5	17.50	17.24	No
		62	5310		14.00	13.11	No
	802.11 ac VH20	52	5260	6.5	18.00	17.72	No
		56	5280		18.00	17.67	No
		60	5300		18.00	17.78	No
		64	5320		16.50	16.16	No
	802.11 ac VH40	54	5270	13.5	17.50	17.22	No
		62	5310		13.50	13.11	No
	802.11ac VH80	58	5290	29.3	13.00	12.63	No

## 8.1.4 CONDUCTED POWER MEASUREMENTS OF WIFI 5.6G

### 1) Main Ant

Band	Mode	Channel	Frequency (MHz)	Data Rate (Mbps)	Tune-up	Average Power(dBm)	SAR Test (Yes/No)
5.6G	802.11a	100	5500	6	17.00	16.73	Yes
		104	5520		18.00	17.73	Yes
		108	5540		18.50	18.21	Yes
		112	5560		18.50	18.19	Yes
		116	5580		18.50	18.27	Yes
		132	5660		18.00	17.72	Yes
		136	5680		17.50	17.12	Yes
		140	5700		17.00	16.48	Yes
	802.11n HT20	100	5500	6.5	17.00	16.57	No
		104	5520		17.50	17.47	No
		108	5540		18.50	18.05	No
		112	5560		17.50	17.47	No
		116	5580		18.00	17.84	No
		132	5660		18.00	17.83	No
		136	5680		17.50	17.49	No
		140	5700		17.00	16.59	No
	802.11n HT40	102	5510	13.5	12.00	11.84	No
		134	5670		17.00	16.84	No
	802.11 ac VH20	100	5500	6.5	17.00	16.73	No
		104	5520		17.50	17.39	No
		108	5540		18.50	17.97	No
		112	5560		17.50	17.16	No
		116	5580		18.00	17.89	No
		132	5660		18.00	17.97	No
		136	5680		17.50	17.31	No
		140	5700		17.00	16.56	No
	802.11 ac VH40	102	5510	13.5	11.50	11.43	No
		134	5670		16.50	16.13	No
	802.11ac VH80	106	5530	29.3	11.00	10.75	No
		138	5690		15.50	15.45	No

## 2) Aux Ant

Band	Mode	Channel	Frequency (MHz)	Data Rate (Mbps)	Tune-up	Average Power(dBm)	SAR Test (Yes/No)
5.6G	802.11a	100	5500	6	17.00	16.58	Yes
		104	5520		18.00	17.92	Yes
		108	5540		18.50	18.04	Yes
		112	5560		18.50	18.39	Yes
		116	5580		18.50	18.47	Yes
		132	5660		18.00	17.82	Yes
		136	5680		17.50	17.41	Yes
		140	5700		17.00	16.89	Yes
	802.11n HT20	100	5500	6.5	17.00	16.67	No
		104	5520		17.50	17.43	No
		108	5540		18.50	18.12	No
		112	5560		17.50	17.45	No
		116	5580		18.00	17.92	No
		132	5660		18.00	17.83	No
		136	5680		17.50	17.31	No
		140	5700		17.00	16.08	No
	802.11n HT40	102	5510	13.5	12.00	11.88	No
		134	5670		17.00	16.78	No
	802.11 ac VH20	100	5500	6.5	17.00	16.57	No
		104	5520		17.50	17.33	No
		108	5540		18.50	17.73	No
		112	5560		17.50	17.19	No
		116	5580		18.00	17.69	No
		132	5660		18.00	17.79	No
		136	5680		17.50	17.28	No
		140	5700		17.00	16.08	No
	802.11 ac VH40	102	5510	13.5	11.50	11.36	No
		134	5670		16.50	16.29	No
	802.11ac VH80	106	5530	29.3	11.00	10.41	No
		138	5690		15.50	15.36	No

## 8.1.5 CONDUCTED POWER MEASUREMENTS OF WIFI 5.8G

### 1) Main Ant

Band	Mode	Channel	Frequency (MHz)	Data Rate (Mbps)	Tune-up	Average Power(dBm)	SAR Test (Yes/No)
5.8G	802.11a	149	5745	6	18.50	18.26	Yes
		153	5765		18.50	18.37	Yes
		157	5785		18.50	18.11	Yes
		161	5805		18.50	18.23	Yes
		165	5825		18.50	18.18	Yes
	802.11n HT20	149	5745	6.5	18.50	18.26	No
		153	5765		18.50	17.87	No
		157	5785		18.50	18.18	No
		161	5805		18.50	18.04	No
		165	5825		18.50	18.02	No
	802.11n HT40	151	5755	13.5	18.00	17.75	No
		159	5795		18.00	17.82	No
	802.11 ac VH20	149	5745	6.5	18.50	18.21	No
		153	5765		18.50	18.23	No
		157	5785		18.50	18.03	No
		161	5805		18.50	18.28	No
		165	5825		18.50	18.19	No
	802.11 ac VH40	151	5755	13.5	18.00	17.86	No
		159	5795		18.00	17.81	No
	802.11ac VH80	155	5775	29.3	18.00	17.91	No

## 2) Aux Ant

Band	Mode	Channel	Frequency (MHz)	Data Rate (Mbps)	Tune-up	Average Power(dBm)	SAR Test (Yes/No)
5.8G	802.11a	149	5745	6	18.50	18.16	Yes
		153	5765		18.50	18.35	Yes
		157	5785		18.50	18.16	Yes
		161	5805		18.50	18.12	Yes
		165	5825		18.50	18.24	Yes
	802.11n HT20	149	5745	6.5	18.50	18.16	No
		153	5765		18.50	17.89	No
		157	5785		18.50	18.12	No
		161	5805		18.50	18.24	No
		165	5825		18.50	18.13	No
	802.11n HT40	151	5755	13.5	18.00	17.91	No
		159	5795		18.00	17.75	No
	802.11 ac VH20	149	5745	6.5	18.50	18.16	No
		153	5765		18.50	18.13	No
		157	5785		18.50	18.12	No
		161	5805		18.50	18.36	No
		165	5825		18.50	18.13	No
	802.11 ac VH40	151	5755	13.5	18.00	17.68	No
		159	5795		18.00	17.83	No
	802.11ac VH80	155	5775	29.3	18.00	17.74	No

## 8.1.6 CONDUCTED POWER MEASUREMENTS OF BT

BT	Tune up	Average Conducted Power(dBm)		
		CH0	CH39	CH78
		2402	2441	2480
DH5	6.00	5.47	4.81	4.63
2DH5	6.00	5.36	4.62	4.53
3DH5	6.00	5.39	4.60	4.51

BT	Tune up	Average Conducted Power(dBm)		
		CH0	CH19	CH39
		2402	2441	2480
BLE	6.00	5.39	5.27	5.08

## 8.2 SAR TEST RESULTS

### General Notes:

- 1) Per KDB447498 D01, all measurement SAR results are scaled to the maximum tune-up tolerance limit to demonstrate compliant.
- 2) Per KDB447498 D01, testing of other required channels within the operating mode of a frequency band is not required when the reported 1-g or 10-g SAR for the mid-band or highest output power channel is:  $\leq 0.8$  W/kg or  $2.0$  W/kg, for 1-g or 10-g respectively, when the transmission band is  $\leq 100$  MHz. When the maximum output power variation across the required test channels is  $> \frac{1}{2}$  dB, instead of the middle channel, the highest output power channel must be used.
- 3) Per KDB865664 D01, for each frequency band, repeated SAR measurement is required only when the measured SAR is  $\geq 0.8$  W/kg; if the deviation among the repeated measurement is  $\leq 20\%$ , and the measured SAR  $< 1.45$  W/kg, only one repeated measurement is required.
- 4) Per KDB941225 D06, the DUT Dimension is bigger than  $9\text{ cm} \times 5\text{ cm}$ , so  $10\text{ mm}$  is chosen as the test separation distance for Hotspot mode. When the antenna-to-edge distance is greater than  $2.5\text{ cm}$ , such position does not need to be tested.
- 5) Per KDB648474 D04, SAR is evaluated without a headset connected to the device. When the standalone reported body-worn SAR is  $\leq 1.2$  W/kg, no additional SAR evaluations using a headset are required.
- 6) Per KDB865664 D02, SAR plot is only required for the highest measured SAR in each exposure configuration, wireless mode and frequency band combination; Plots are also required when the measured SAR is  $> 1.5$  W/kg, or  $> 7.0$  W/kg for occupational exposure. The published RF exposure KDB procedures may require additional plots; for example, to support SAR to peak location separation ratio test exclusion and/or volume scan post-processing.

### WLAN Notes:

1. For exposure conditions with multiple test positions, such as handset operating next to the ear, devices with hotspot mode, procedures for initial test position can be applied. Using the transmission mode determined by the DSSS procedure or initial test configuration, area scans are measured for all positions in an exposure condition. The test position with the highest extrapolated (peak) SAR is used as the initial test position. When the reported SAR of the initial test position is  $\leq 0.4$  W/kg, further SAR measurement is not required for the other (remaining) test positions. Otherwise, SAR is evaluated at the subsequent highest peak SAR position until the reported SAR result is  $\leq 0.8$  W/kg or all test positions are measured.
2. Justification for test configurations for WLAN per KDB Publication 248227 for 2.4GHz WIFI single transmission chain operations, the highest measured maximum output power Channel for DSSS was selected for SAR measurement. SAR for OFDM modes (2.4GHz 802.11g/n) was not required due to the maximum allowed powers and the highest reported DSSS SAR. See Section 7.1 for more information.
3. Justification for test configurations for WLAN per KDB Publication 248227 for 5GHz WIFI single transmission chain operations, the initial test configuration was selected according to the transmission mode with the highest maximum allowed power. Other transmission mode were not investigated since the highest reported SAR for initial test configuration adjusted by the ratio of maximum output powers is less than  $1.2$  W/kg. See Section 7.1 for more information.



## 8.2.1 SAR MEASUREMENT RESULT

### 8.2.1.1 SAR MEASUREMENT RESULT FOR MAIN ANT

1) Tablet Mode SAR test results of 2.4G WiFi.

Test No.	Band	Channel	Test Position	Separation Distance (cm)	ANT vendor	Data Rate	Maximum Tune-up (dBm)	Conducted Power (dBm)	Power Drift	SAR 1g	Scaled 1g SAR
T01	802.11b	6	Rear Face	0	1	1	18	17.89	0	0.062	0.064
T02	802.11b	6	Bottom Side	0	1	1	18	17.89	0	<b>0.382</b>	<b>0.392</b>
T03	802.11b	1	Bottom Side	0	1	1	16.5	16.14	0.02	0.287	0.312
T04	802.11b	11	Bottom Side	0	1	1	18	17.51	0	0.348	0.390
T05	802.11b	6	Bottom Side	0	2	1	18	17.89	0.06	0.364	0.373

2) NB Mode SAR test results of 2.4G WiFi

Test No.	Band	Channel	Test Position	Separation Distance (cm)	ANT vendor	Data Rate	Maximum Tune-up (dBm)	Conducted Power (dBm)	Power Drift	SAR 1g	Scaled 1g SAR
T11	802.11b	6	Back of Screen	2.5	1	1	18	17.89	0	0.051	0.052
T12	802.11b	6	Bottom Side	0	1	1	18	17.89	0	0.082	0.084
T13	802.11b	1	Bottom Side	0	1	1	16.5	16.14	-0.02	0.073	0.079
T14	802.11b	11	Bottom Side	0	1	1	18	17.51	0	<b>0.102</b>	<b>0.114</b>
T15	802.11b	11	Bottom Side	0	2	1	18	17.51	0	0.087	0.097

Note: 1.The value with boldface is the maximum SAR Value of each test band.

2. The manufacturer of Ant 1 is Speed, Ant 2 is Hongbo.

### 3) Tablet Mode SAR test results of 5G WiFi

Test No.	Band	Mode	CH	Test Position	Separation Distance (cm)	ANT vendor	Data Rate	Maximum Tune-up (dBm)	Conducted Power (dBm)	Power Drift	SAR 1g	Scaled 1g SAR
T41	802.11a	5.3G	56	Rear Face	0	1	6	18	17.93	0	0.267	0.271
T42	802.11a	5.3G	56	Bottom Side	0	1	6	18	17.93	0.13	0.855	0.869
T43	802.11a	5.3G	52	Bottom Side	0	1	6	18	17.84	0.01	0.840	0.872
T44	802.11a	5.3G	60	Bottom Side	0	1	6	18	17.84	0.03	<b>1.050</b>	<b>1.089</b>
T45	802.11a	5.3G	64	Bottom Side	0	1	6	16.5	16.36	0	0.866	0.894
T46	802.11a	5.3G	60	Bottom Side	0	2	6	16.5	16.13	0	0.968	1.054
T47	802.11a	5.3G	60	Bottom Side ( 1st Repeated )	0	1	6	18	17.84	0.02	1.010	1.048
T81	802.11a	5.6G	116	Rear Face	0	1	6	18.5	18.27	0	0.235	0.248
T82	802.11a	5.6G	116	Bottom Side	0	1	6	18.5	18.27	0.02	0.882	0.930
T83	802.11a	5.6G	100	Bottom Side	0	1	6	17	16.73	0.09	0.664	0.707
T84	802.11a	5.6G	104	Bottom Side	0	1	6	18	17.73	0	1.090	1.160
T85	802.11a	5.6G	108	Bottom Side	0	1	6	18.5	18.21	-0.12	0.879	0.940
T86	802.11a	5.6G	112	Bottom Side	0	1	6	18.5	18.19	0	0.947	1.017
T87	802.11a	5.6G	132	Bottom Side	0	1	6	18	17.72	0	0.942	1.005
T88	802.11a	5.6G	136	Bottom Side	0	1	6	17.5	17.12	0.09	<b>1.190</b>	<b>1.299</b>
T89	802.11a	5.6G	140	Bottom Side	0	1	6	17	16.48	0.05	1.090	1.229
T90	802.11a	5.6G	136	Bottom Side	0	2	6	17.5	17.12	0	1.030	1.124
T91	802.11a	5.6G	136	Bottom Side ( 1st Repeated )	0	1	6	17.5	17.12	0.09	1.130	1.233
T161	802.11a	5.8G	153	Rear Face	0	1	6	18.5	18.37	0	0.180	0.185
T162	802.11a	5.8G	153	Bottom Side	0	1	6	18.5	18.37	0.08	1.070	1.103
T163	802.11a	5.8G	149	Bottom Side	0	1	6	18.5	18.26	0.04	<b>1.130</b>	<b>1.194</b>
T164	802.11a	5.8G	157	Bottom Side	0	1	6	18.5	18.11	0	0.913	0.999
T165	802.11a	5.8G	161	Bottom Side	0	1	6	18.5	18.23	0.02	1.040	1.107
T166	802.11a	5.8G	165	Bottom Side	0	1	6	18.5	18.18	-0.05	1.030	1.109
T167	802.11a	5.8G	149	Bottom Side	0	2	6	18.5	18.26	0	1.060	1.120
T163	802.11a	5.8G	149	Bottom Side ( 1st Repeated )	0	1	6	18.5	18.26	0.04	1.080	1.141

Note: 1.The value with boldface is the maximum SAR Value of each test band.

2. The manufacturer of Ant 1 is Speed, Ant 2 is Hongbo.

#### 4) NB Mode SAR test results of 5G WiFi

Test No.	Band	Mode	CH	Test Position	Separation Distance (cm)	ANT vendor	Data Rate	Maximum Tune-up (dBm)	Conducted Power (dBm)	Power Drift	SAR 1g	Scaled 1g SAR
T51	802.11a	5.3G	56	Back of Screen	2.5	1	6	18	17.93	0.06	0.226	0.230
T52	802.11a	5.3G	56	Bottom Side	0	1	6	18	17.93	0	0.124	0.126
T53	802.11a	5.3G	52	Back of Screen	2.5	1	6	18	17.84	0	<b>0.255</b>	<b>0.265</b>
T54	802.11a	5.3G	60	Back of Screen	2.5	1	6	18	17.84	0.02	0.205	0.213
T55	802.11a	5.3G	64	Back of Screen	2.5	1	6	16.5	16.36	0.14	0.213	0.220
T56	802.11a	5.3G	52	Back of Screen	2.5	2	6	18	17.84	0	0.232	0.241
T101	802.11a	5.6G	116	Back of Screen	2.5	1	6	18.5	18.27	0	0.293	0.309
T102	802.11a	5.6G	116	Bottom Side	0	1	6	18.5	18.27	0.06	0.261	0.275
T103	802.11a	5.6G	100	Back of Screen	2.5	1	6	17	16.73	0.03	0.175	0.186
T104	802.11a	5.6G	104	Back of Screen	2.5	1	6	18	17.73	0	<b>0.360</b>	<b>0.383</b>
T105	802.11a	5.6G	108	Back of Screen	2.5	1	6	18.5	18.21	0	0.261	0.279
T106	802.11a	5.6G	112	Back of Screen	2.5	1	6	18.5	18.19	0	0.323	0.347
T107	802.11a	5.6G	132	Back of Screen	2.5	1	6	18	17.72	0.02	0.193	0.206
T108	802.11a	5.6G	136	Back of Screen	2.5	1	6	17.5	17.12	0.07	0.205	0.224
T109	802.11a	5.6G	140	Back of Screen	2.5	1	6	17	16.48	-0.04	0.201	0.227
T110	802.11a	5.6G	104	Back of Screen	2.5	2	6	18	17.73	0	0.323	0.344
T171	802.11a	5.8G	153	Back of Screen	2.5	1	6	18.5	18.37	0	<b>0.361</b>	<b>0.372</b>
T172	802.11a	5.8G	153	Bottom Side	0	1	6	18.5	18.37	0.01	0.305	0.314
T173	802.11a	5.8G	149	Back of Screen	2.5	1	6	18.5	18.26	-0.06	0.294	0.311
T174	802.11a	5.8G	157	Back of Screen	2.5	1	6	18.5	18.11	0	0.332	0.363
T175	802.11a	5.8G	161	Back of Screen	2.5	1	6	18.5	18.23	0.02	0.326	0.347
T176	802.11a	5.8G	165	Back of Screen	2.5	1	6	18.5	18.18	0	0.334	0.360
T177	802.11a	5.8G	153	Back of Screen	2.5	2	6	18.5	18.37	0	0.337	0.347

Note: 1.The value with boldface is the maximum SAR Value of each test band.

2. The manufacturer of Ant 1 is Speed, Ant 2 is Hongbo.

## 8.2.1.2 SAR MEASUREMENT RESULT FOR AUX ANT

### 1) Tablet Mode SAR test results of 2.4G WiFi

Test No.	Band	Channel	Test Position	Separation Distance (cm)	ANT vendor	Data Rate	Maximum Tune-up (dBm)	Conducted Power (dBm)	Power Drift	SAR 1g	Scaled 1g SAR
T21	802.11b	6	Rear Face	0	1	1	18	17.58	0	0.046	0.051
T22	802.11b	6	Bottom Side	0	1	1	18	17.58	-0.1	<b>0.145</b>	<b>0.160</b>
T23	802.11b	1	Bottom Side	0	1	1	16.5	16.35	0	0.086	0.089
T24	802.11b	11	Bottom Side	0	1	1	18	17.57	0	0.116	0.128
T25	802.11b	6	Bottom Side	0	2	1	18	17.58	0	0.121	0.133

### 2) NB Mode SAR test results of 2.4G WiFi

Test No.	Band	Channel	Test Position	Separation Distance (cm)	ANT vendor	Data Rate	Maximum Tune-up (dBm)	Conducted Power (dBm)	Power Drift	SAR 1g	Scaled 1g SAR
T31	802.11b	6	Back of Screen	2.5	1	1	18	17.58	-0.13	<b>0.040</b>	<b>0.044</b>
T32	802.11b	6	Bottom Side	0	1	1	18	17.58	0	0.039	0.043
T33	802.11b	1	Back of Screen	2.5	1	1	16.5	16.35	0.03	0.032	0.033
T34	802.11b	11	Back of Screen	2.5	1	1	18	17.57	0	0.035	0.039
T35	802.11b	6	Back of Screen	2.5	2	1	18	17.58	0.05	0.033	0.036

Note: 1.The value with boldface is the maximum SAR Value of each test band.  
2. The manufacturer of Ant 1 is Speed, Ant 2 is Hongbo.

### 3) Tablet Mode SAR test results of 5G WiFi

Test No.	Band	Mode	CH	Test Position	Separation Distance (cm)	ANT vendor	Data Rate	Maximum Tune-up (dBm)	Conducted Power (dBm)	Power Drift	SAR 1g	Scaled 1g SAR
T61	802.11a	5.3G	56	Rear Face	0	1	6	18	17.84	0.02	0.160	0.166
T62	802.11a	5.3G	56	Bottom Side	0	1	6	18	17.84	0	0.952	0.988
T63	802.11a	5.3G	52	Bottom Side	0	1	6	18	17.53	0.15	<b>0.988</b>	<b>1.101</b>
T64	802.11a	5.3G	60	Bottom Side	0	1	6	16.5	16.42	0	0.636	0.648
T65	802.11a	5.3G	64	Bottom Side	0	1	6	16.5	16.38	-0.02	0.449	0.462
T66	802.11a	5.3G	52	Bottom Side	0	2	6	18	17.53	0.07	0.925	1.031
T67	802.11a	5.3G	52	Bottom Side ( 1st Repeated )	0	1	6	18	17.53	0.15	0.976	1.088
T122	802.11a	5.6G	116	Rear Face	0	1	6	18.5	18.47	0	0.135	0.136
T123	802.11a	5.6G	116	Bottom Side	0	1	6	18.5	18.47	0.04	0.672	0.677
T124	802.11a	5.6G	100	Bottom Side	0	1	6	17	16.58	0.09	0.492	0.542
T125	802.11a	5.6G	104	Bottom Side	0	1	6	18	17.92	0	0.615	0.626
T126	802.11a	5.6G	108	Bottom Side	0	1	6	18.5	18.04	0.03	0.589	0.655
T127	802.11a	5.6G	112	Bottom Side	0	1	6	18.5	18.39	0	0.609	0.625
T128	802.11a	5.6G	132	Bottom Side	0	1	6	18	17.82	0.01	<b>0.944</b>	<b>0.984</b>
T129	802.11a	5.6G	136	Bottom Side	0	1	6	17.5	17.41	-0.16	0.834	0.851
T130	802.11a	5.6G	140	Bottom Side	0	1	6	17	16.89	0	0.670	0.687
T131	802.11a	5.6G	132	Bottom Side	0	2	6	18	17.82	0.07	0.885	0.922
T128	802.11a	5.6G	132	Bottom Side ( 1st Repeated )	0	1	6	18	17.82	0.01	0.937	0.977
T181	802.11a	5.8G	153	Rear Face	0	1	6	18.5	18.35	0.09	0.194	0.201
T182	802.11a	5.8G	153	Bottom Side	0	1	6	18.5	18.35	0.18	<b>0.715</b>	<b>0.740</b>
T183	802.11a	5.8G	149	Bottom Side	0	1	6	18.5	18.16	0.03	0.474	0.513
T184	802.11a	5.8G	157	Bottom Side	0	1	6	18.5	18.12	0	0.423	0.462
T185	802.11a	5.8G	161	Bottom Side	0	1	6	18.5	18.24	0.04	0.549	0.583
T186	802.11a	5.8G	165	Bottom Side	0	1	6	18.5	18.13	-0.05	0.479	0.522
T187	802.11a	5.8G	153	Bottom Side	0	2	6	18.5	18.35	0	0.676	0.700

Note: 1.The value with boldface is the maximum SAR Value of each test band.

2. The manufacturer of Ant 1 is Speed, Ant 2 is Hongbo.

#### 4) NB Mode SAR test results of 5G WiFi

Test No.	Band	Mode	CH	Test Position	Separation Distance (cm)	ANT vendor	Data Rate	Maximum Tune-up (dBm)	Conducted Power (dBm)	Power Drift	SAR 1g	Scaled 1g SAR
T71	802.11a	5.3G	56	Back of Screen	2.5	1	6	18	17.84	0	<b>0.295</b>	<b>0.306</b>
T72	802.11a	5.3G	56	Bottom Side	0	1	6	18	17.84	0	0.260	0.270
T73	802.11a	5.3G	52	Back of Screen	2.5	1	6	18	17.53	-0.03	0.245	0.273
T74	802.11a	5.3G	60	Back of Screen	2.5	1	6	16.5	16.42	0	0.224	0.228
T75	802.11a	5.3G	64	Back of Screen	2.5	1	6	16.5	16.38	0.09	0.216	0.222
T76	802.11a	5.3G	56	Back of Screen	2.5	2	6	18	17.84	0	0.263	0.273
T141	802.11a	5.6G	116	Back of Screen	2.5	1	6	18.5	18.47	0	0.194	0.195
T142	802.11a	5.6G	116	Bottom Side	0	1	6	18.5	18.47	0	0.148	0.149
T143	802.11a	5.6G	100	Back of Screen	2.5	1	6	17	16.58	0.06	0.222	0.245
T144	802.11a	5.6G	104	Back of Screen	2.5	1	6	18	17.92	0.17	0.232	0.236
T145	802.11a	5.6G	108	Back of Screen	2.5	1	6	18.5	18.04	0	<b>0.239</b>	<b>0.266</b>
T146	802.11a	5.6G	112	Back of Screen	2.5	1	6	18.5	18.39	0	0.206	0.211
T147	802.11a	5.6G	132	Back of Screen	2.5	1	6	18	17.82	0	0.176	0.183
T148	802.11a	5.6G	136	Back of Screen	2.5	1	6	17.5	17.41	0.03	0.181	0.185
T149	802.11a	5.6G	140	Back of Screen	2.5	1	6	17	16.89	0.01	0.190	0.195
T150	802.11a	5.6G	108	Back of Screen	2.5	2	6	18.5	18.04	0.04	0.216	0.240
T191	802.11a	5.8G	153	Back of Screen	2.5	1	6	18.5	18.35	0	<b>0.359</b>	<b>0.372</b>
T192	802.11a	5.8G	153	Bottom Side	0	1	6	18.5	18.35	0	0.092	0.095
T193	802.11a	5.8G	149	Back of Screen	2.5	1	6	18.5	18.16	0.02	0.295	0.319
T194	802.11a	5.8G	157	Back of Screen	2.5	1	6	18.5	18.12	0.05	0.339	0.370
T195	802.11a	5.8G	161	Back of Screen	2.5	1	6	18.5	18.24	0	0.345	0.366
T196	802.11a	5.8G	165	Back of Screen	2.5	1	6	18.5	18.13	0.07	0.306	0.333
T197	802.11a	5.8G	153	Back of Screen	2.5	2	6	18.5	18.35	0	0.327	0.338

Note: 1.The value with boldface is the maximum SAR Value of each test band.

2. The manufacturer of Ant 1 is Speed, Ant 2 is Hongbo.

### 8.3 MULTIPLE TRANSMITTER EVALUATION

The following tables list information which is relevant for the decision if a simultaneous transmit evaluation is necessary according to FCC KDB 447498D01 General RF Exposure Guidance v06.

The location of the antenna inside EUT, please refer to Appendix E.

#### 8.3.1 STAND-ALONE SAR CALCULATION

When standalone SAR test exclusion applies to an antenna that transmits simultaneously with other antennas, the standalone SAR must be estimated according to following to determine simultaneous transmission SAR test exclusion:

(1) for test separation distances  $\leq 50$  mm

(max. power of channel, including tune-up tolerance, mW)/(min. test separation distance, mm)] • [  $\sqrt{f(\text{GHz})/x}$  ] W/kg for test separation distances  $\leq 50$  mm, where  $x = 7.5$  for 1-g SAR and  $x = 18.75$  for 10-g SAR.

When the minimum test separation distance is  $< 5$  mm, a distance of 5 mm is applied to determine SAR test exclusion

According to KDB 447498 D01, when standalone SAR test exclusion applies to an antenna that transmits simultaneously with other antennas, the standalone SAR was estimated according to following formula to result in substantially conservative SAR values of  $\leq 0.4$  W/kg to determine simultaneous transmission SAR test exclusion.

$$\text{Estimated SAR} = \frac{\text{Max. Tune up Power}_{(\text{mW})}}{\text{Min. Test Separation Distance}_{(\text{mm})}} \times \frac{\sqrt{f_{(\text{GHz})}}}{7.5}$$

(2) for test separation distances  $\geq 50$  mm

**0.4W/Kg for 1g SAR**

Estimated SAR calculation for BT

Position	$P_{\text{max}}$ (dBm)*	$P_{\text{max}}$ (mW)	Distance (mm)	f (GHz)	X	Estimated SAR (W/kg)*
Rear	6.00	3.98	5	2.48	7.5	0.167
Bottom	6.00	3.98	8	2.48	7.5	0.104
Back of Screen	6.00	3.98	25	2.48	7.5	0.033

Note: \* - maximum possible output power declared by manufacturer

### 8.3.2 STAND-ALONE SAR TEST EXCLUSION

Per FCC KDB 447498D01, SAR compliance for simultaneous transmission must be considered when the maximum duration of overlapping transmissions, including network hand-offs, is greater than 30 seconds. This device contains multiple transmitters that may operate simultaneously, and therefore requires a simultaneous transmission analysis.

WiFi 2.4G / WiFi 5G / BT transmit simultaneously

Co-Location	2.4G WLAN (Aux)	5G WLAN (Aux)	BT(Aux)
2.4G WLAN (Main)	No	No	No
5G WLAN (Main)	No	No	Yes
BT(Aux)	No	Yes	No

Note: 1). BT antenna only supports the aux antenna.



### 8.3.3 Simultaneous transmission conditions

About WIFI and Bluetooth transmit simultaneously

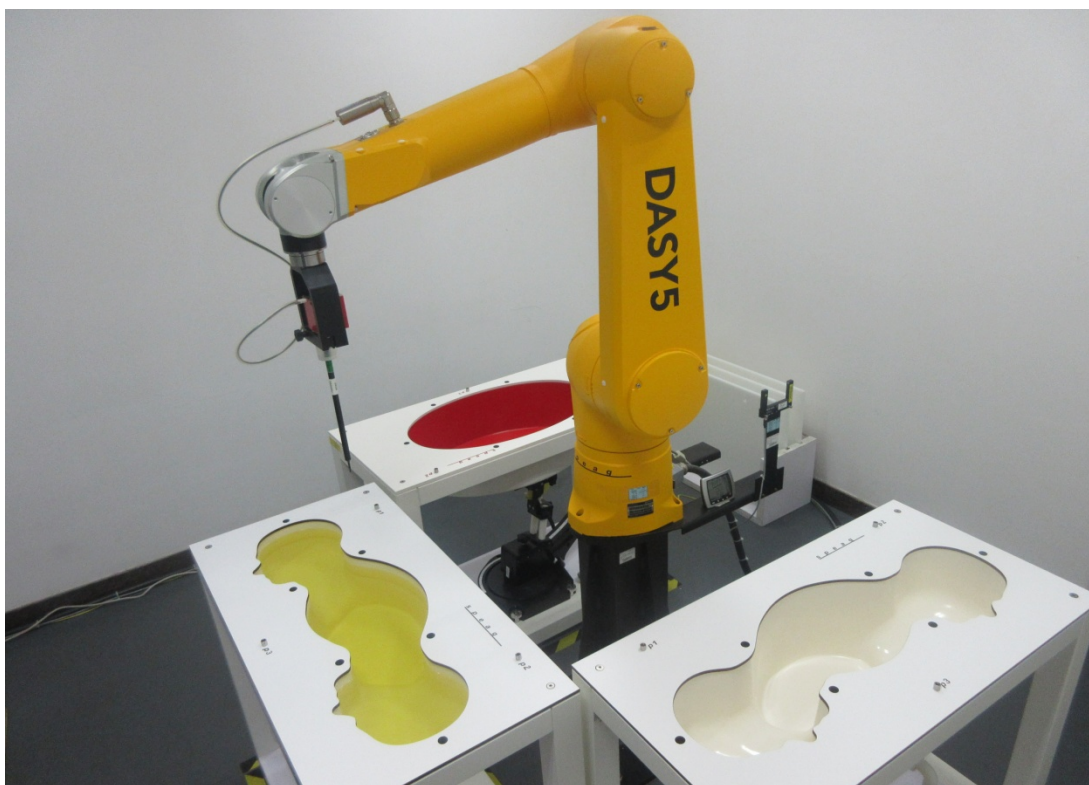
Reported Position SAR <sub>1g</sub> (W/Kg)		Tablet Mode		Notebook Mode	
		Rear Face	Bottom Side	Back of Screen	Bottom Side
Main	5.3G WLAN	0.271	1.089	0.265	0.126
	5.6G WLAN	0.248	1.299	0.383	0.275
	5.8G WLAN	0.185	1.194	0.372	0.314
Aux	5.3G WLAN	0.166	1.101	0.306	0.270
	5.6G WLAN	0.136	0.984	0.266	0.149
	5.8G WLAN	0.201	0.740	0.372	0.095
	BT	0.167	0.104	0.033	0.104
MAX $\Sigma$ SAR <sub>1g</sub>		<b>0.438</b>	<b>1.403</b>	<b>0.416</b>	<b>0.418</b>

MAX.  $\Sigma$ SAR<sub>1g</sub>=1.403W/Kg<1.6 W/Kg,so Simultaneous SAR are not required for WIFI and Bluetooth.

## APPENDIX

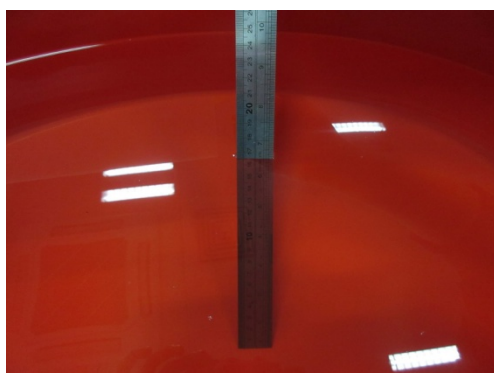
### 1. Test Layout

#### Specific Absorption Rate Test Layout



#### Liquid depth in the flat Phantom ( $\geq 15\text{cm}$ depth)

Body(1900~3800MHz)\_16.5cm



Body (5G)\_15.2cm



## **Appendix A. SAR Plots of System Verification**

(Pls See Appendix A.)

## **Appendix B. SAR Plots of SAR Measurement**

(Pls See Appendix B.)

## **Appendix C. Calibration Certificate for Probe and Dipole**

(Pls See Appendix C.)

## **Appendix D. Photographs of the Test Set-Up**

(Pls See Appendix D.)

## **Appendix E. Antenna location and standalone SAR test exclusion**

(Pls See Appendix E.)

---

**End**