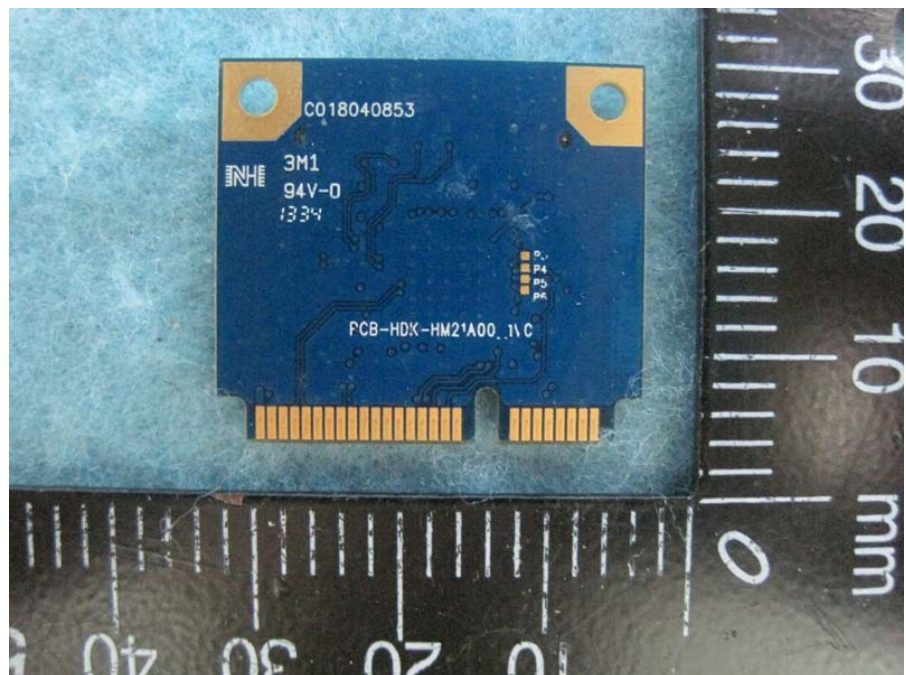
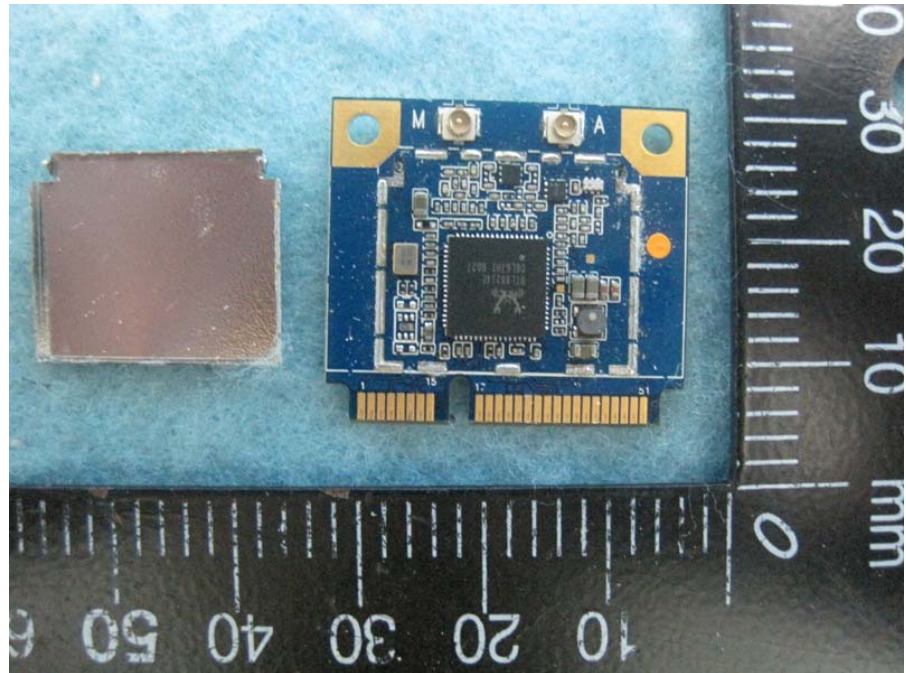


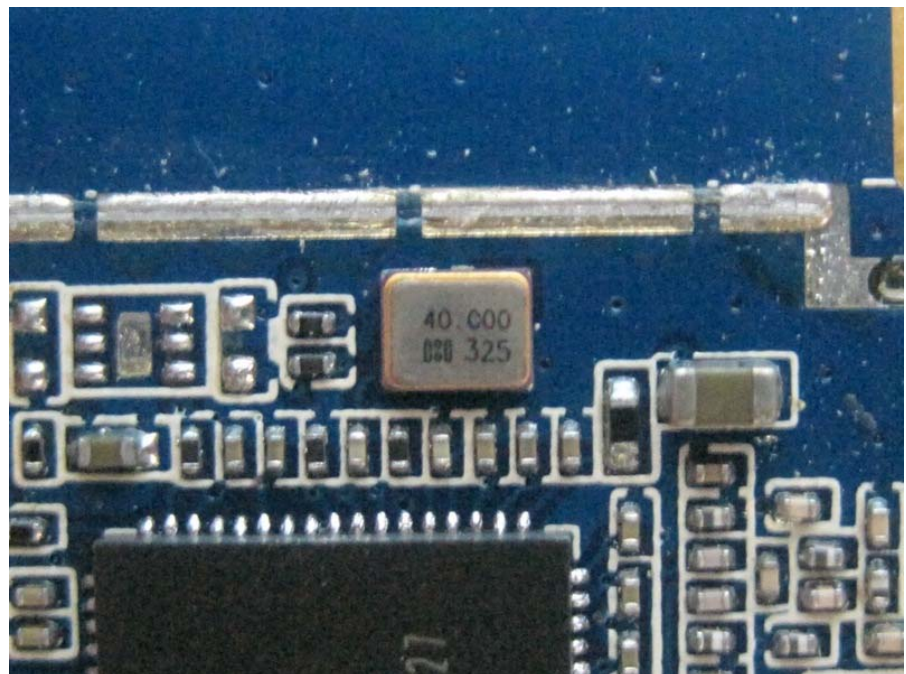
## Photographs of EUT

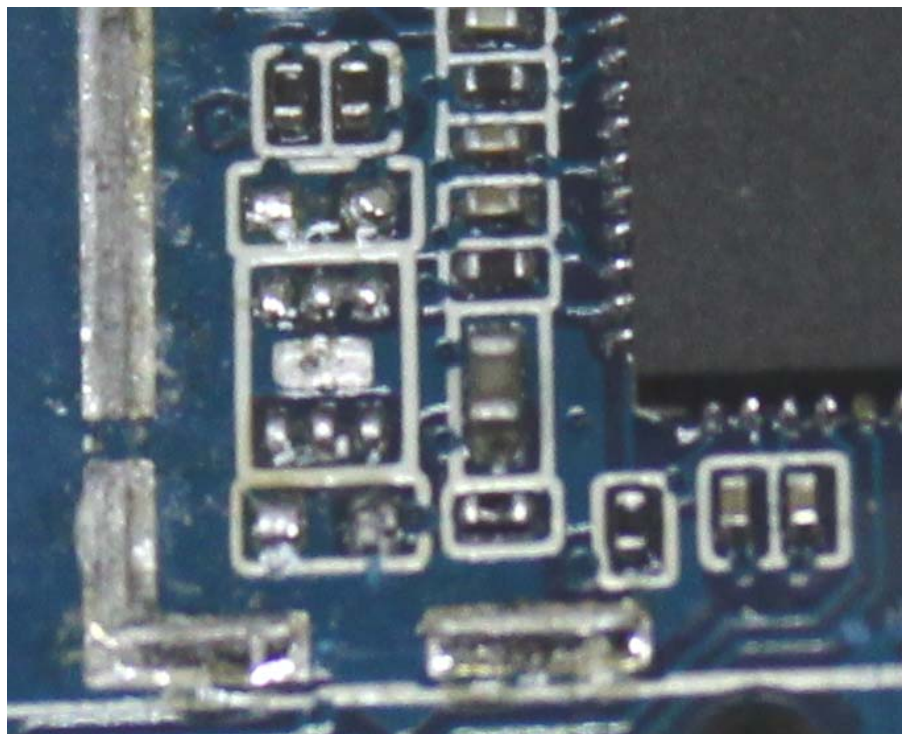
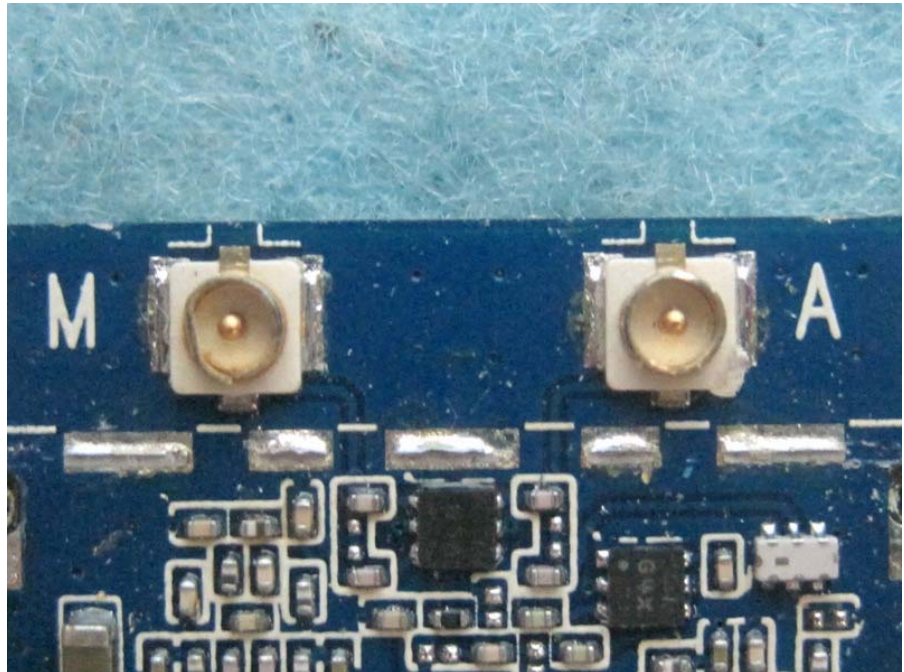
### Configuration 1.

RC Module

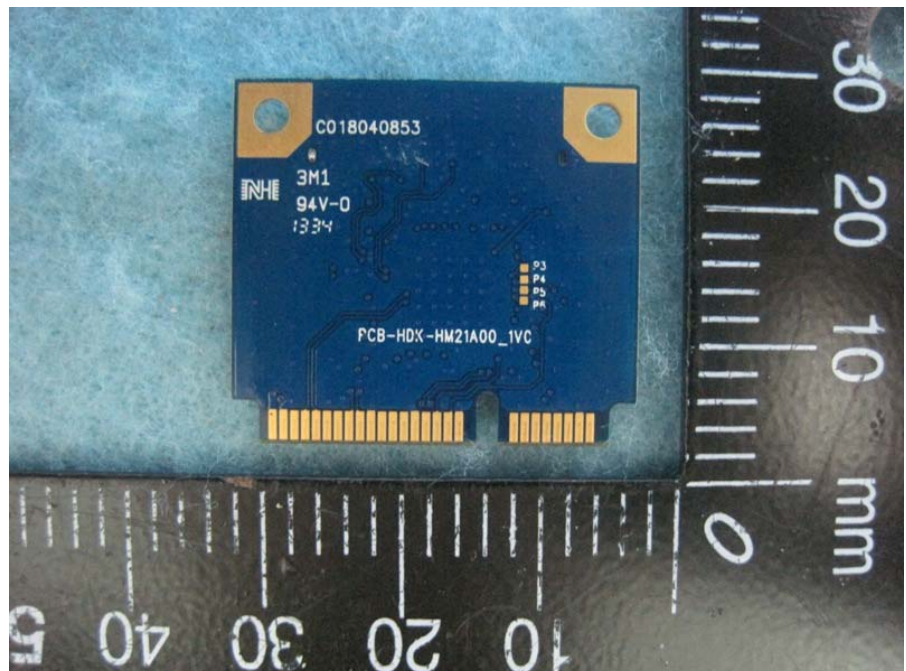
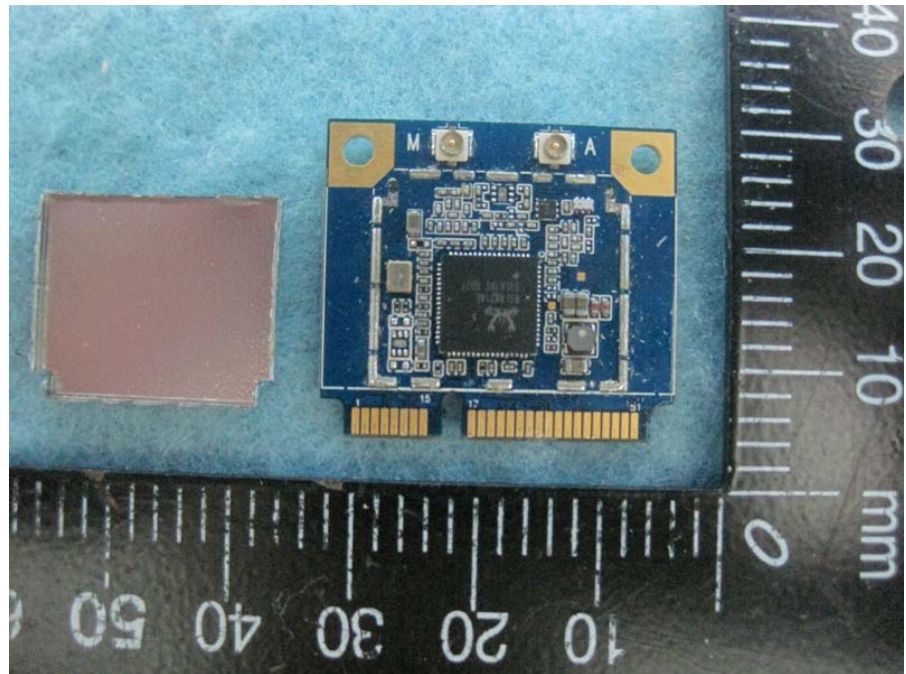
HMC / PCI-E / Diversity

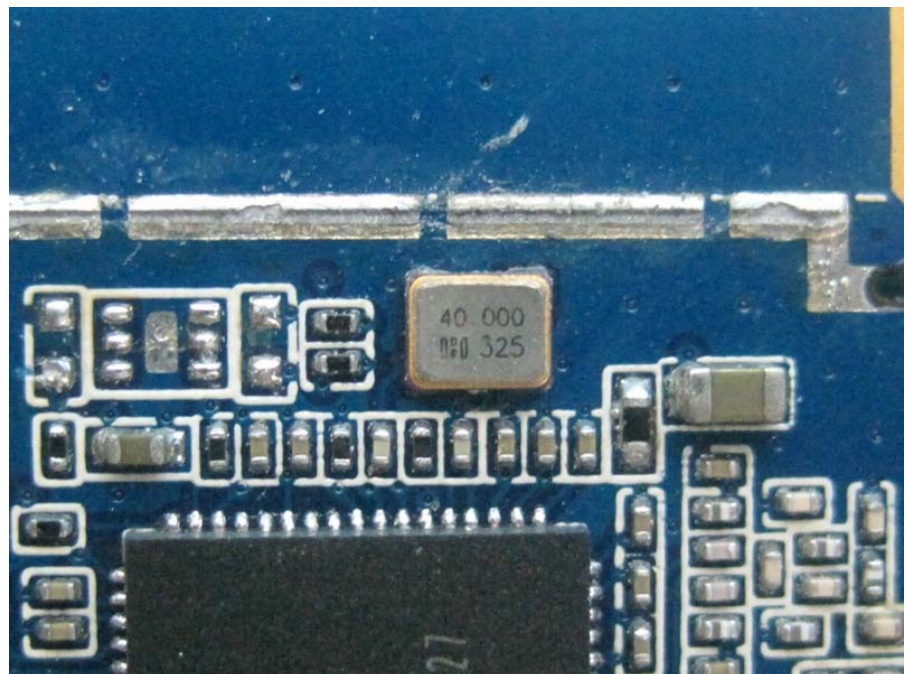


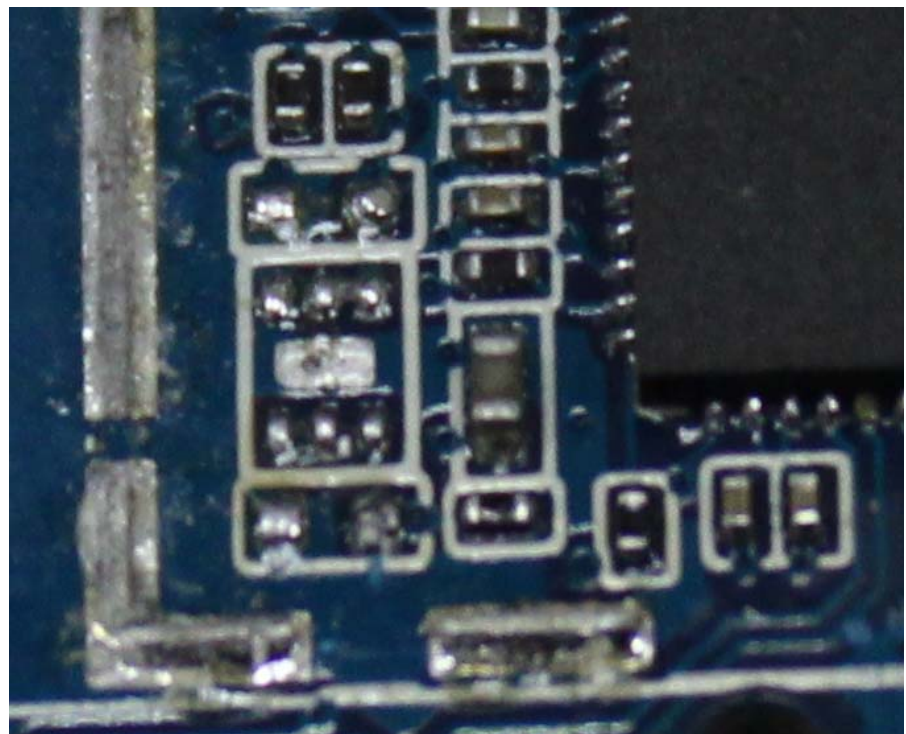
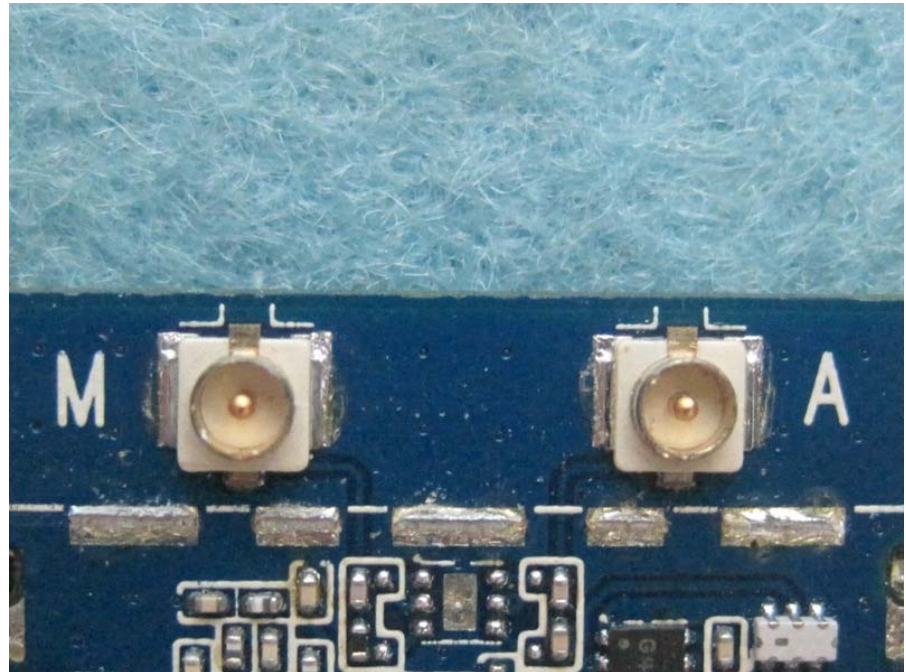




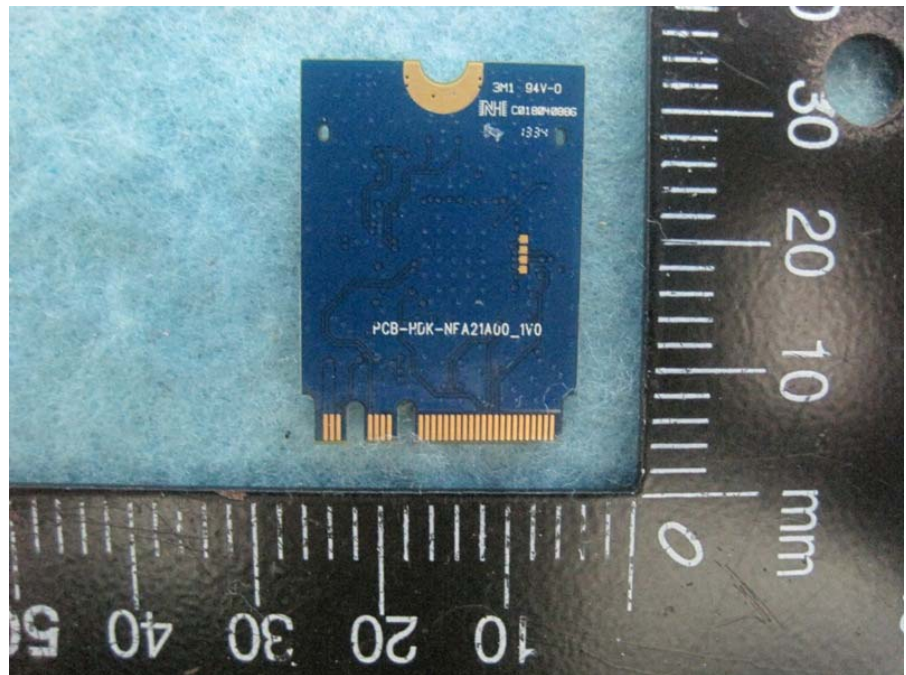
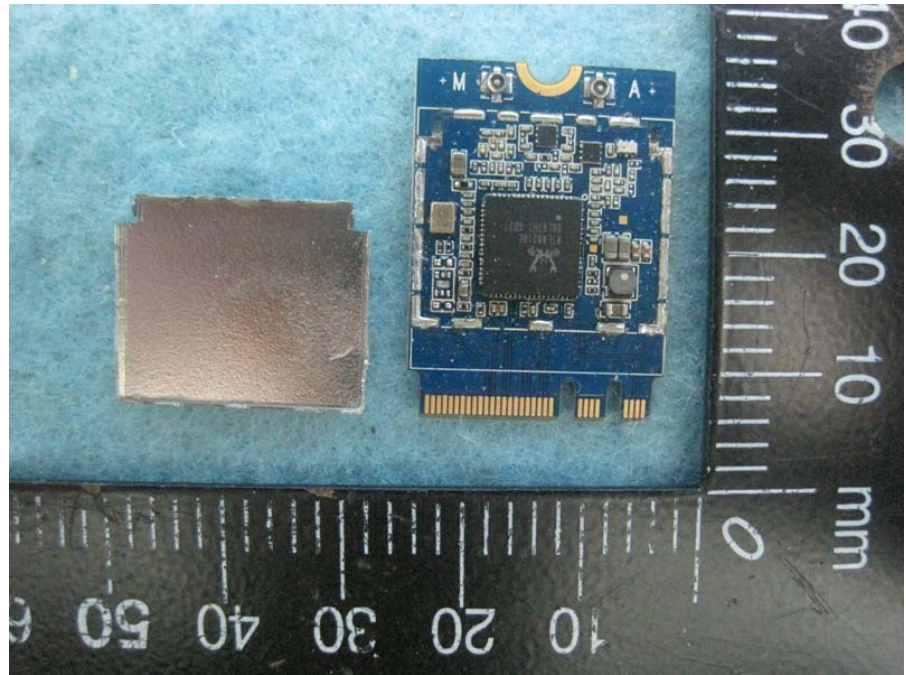
Configuration 2.  
RC Module  
HMC / PCI-E / Fixed

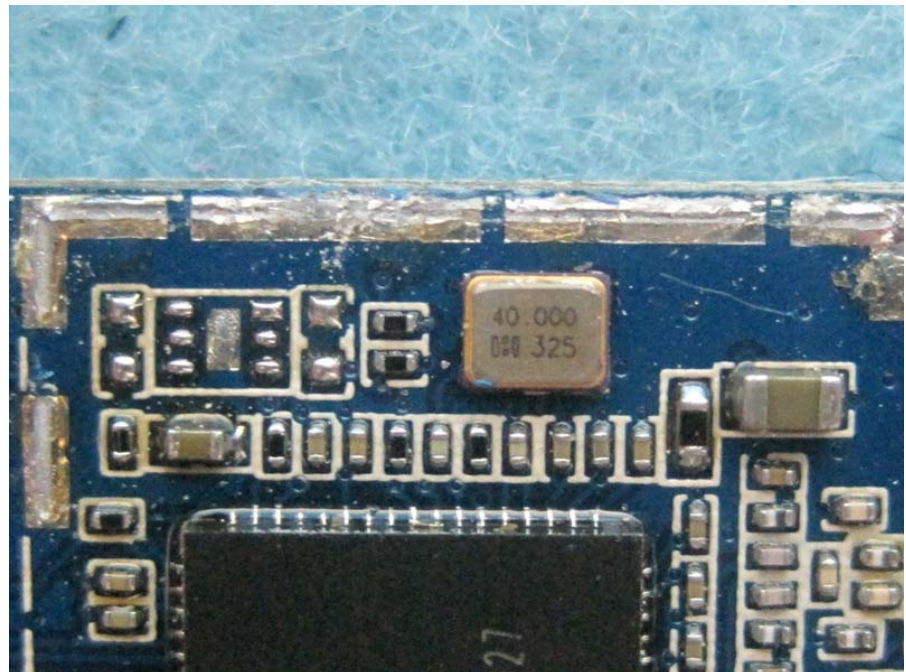




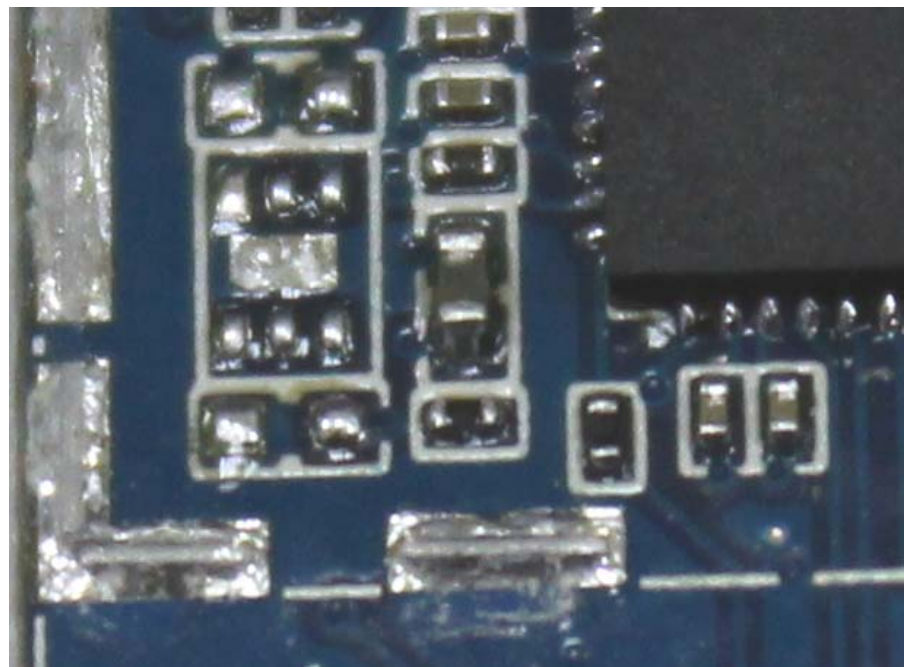
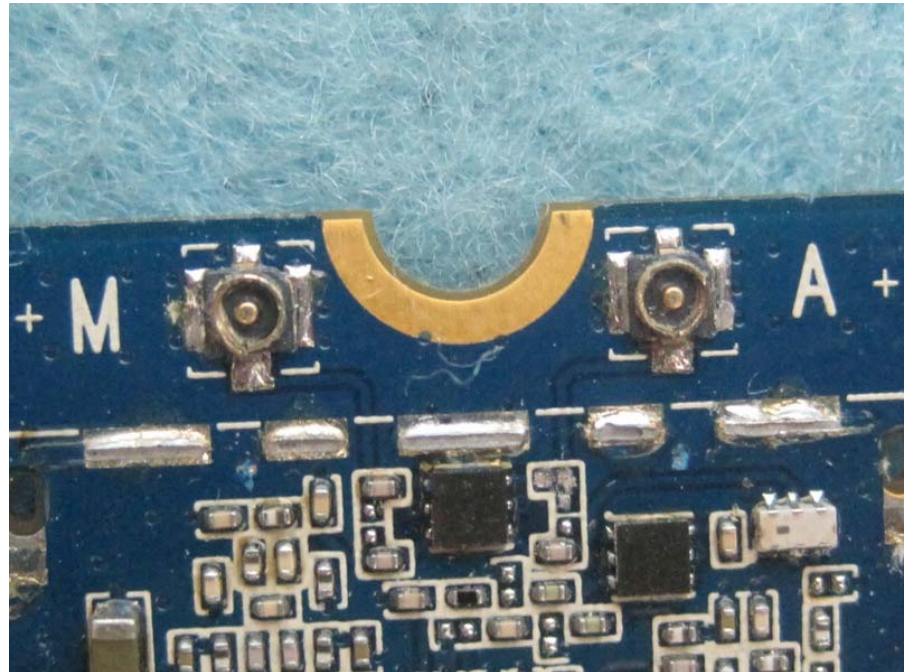


**Configuration 3.**  
**RC Module**  
**NGFF / PCI-E / Diversity**

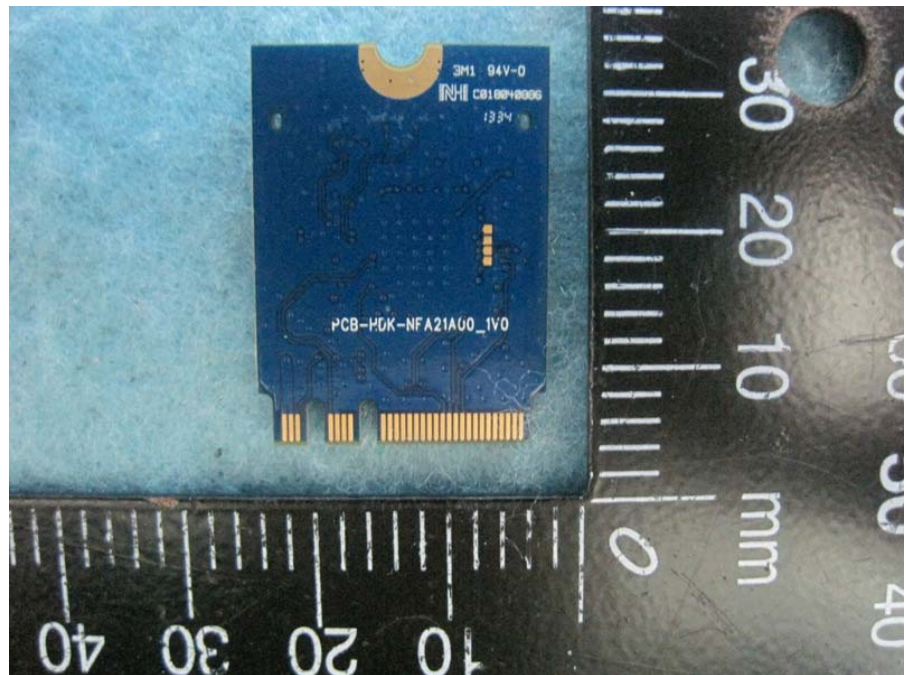
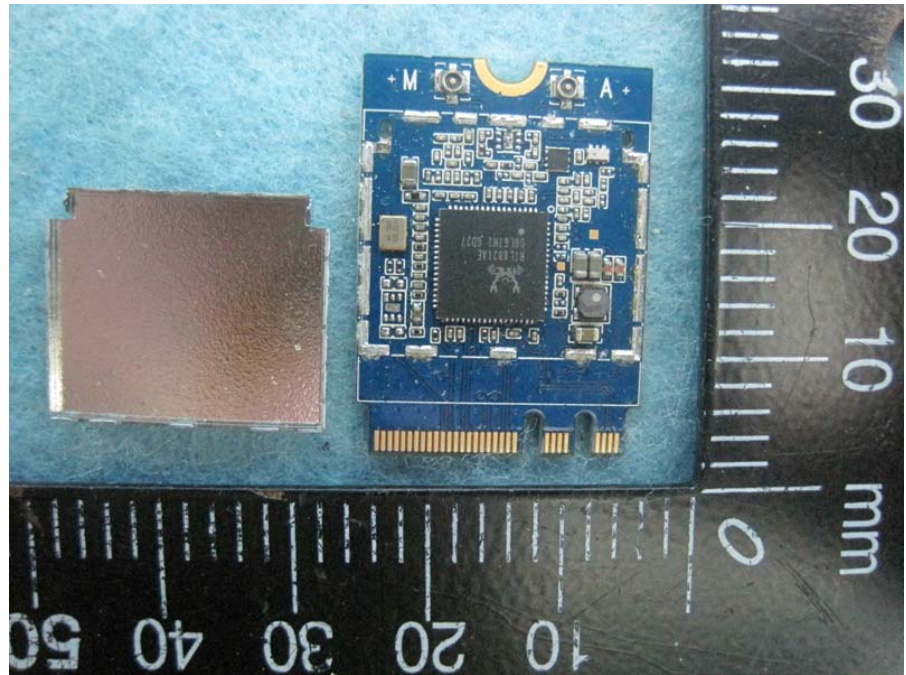


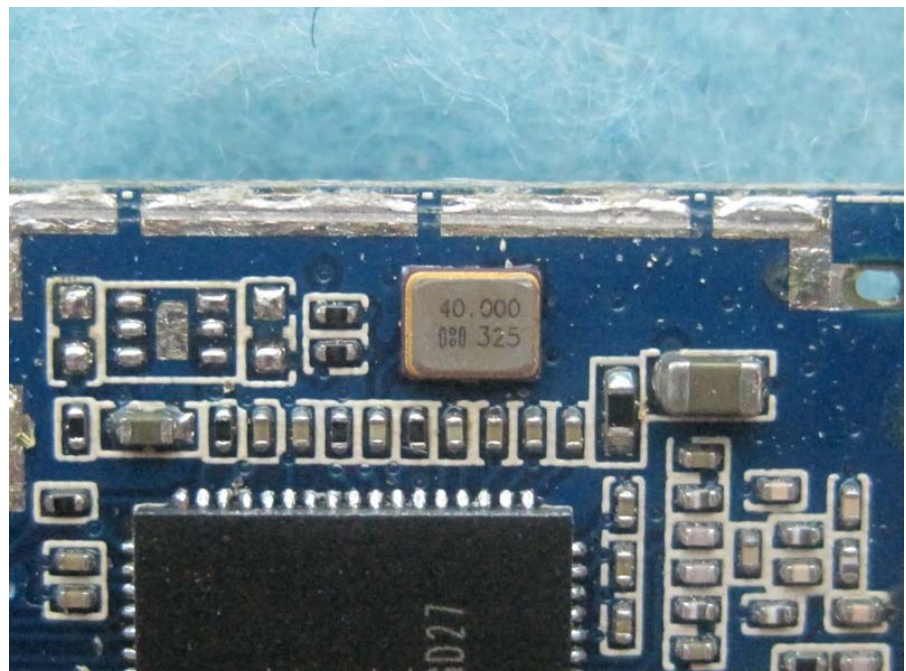


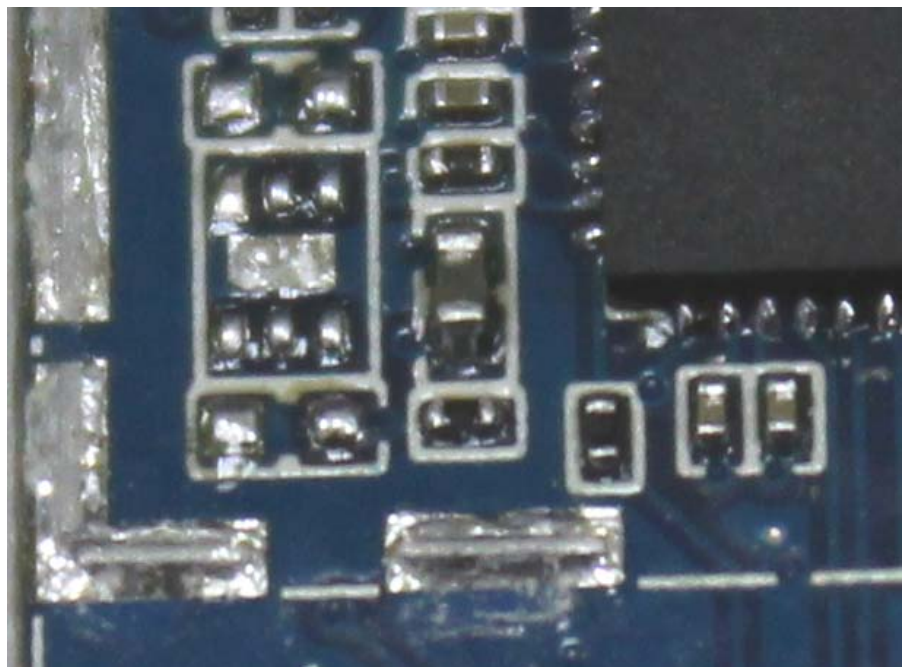
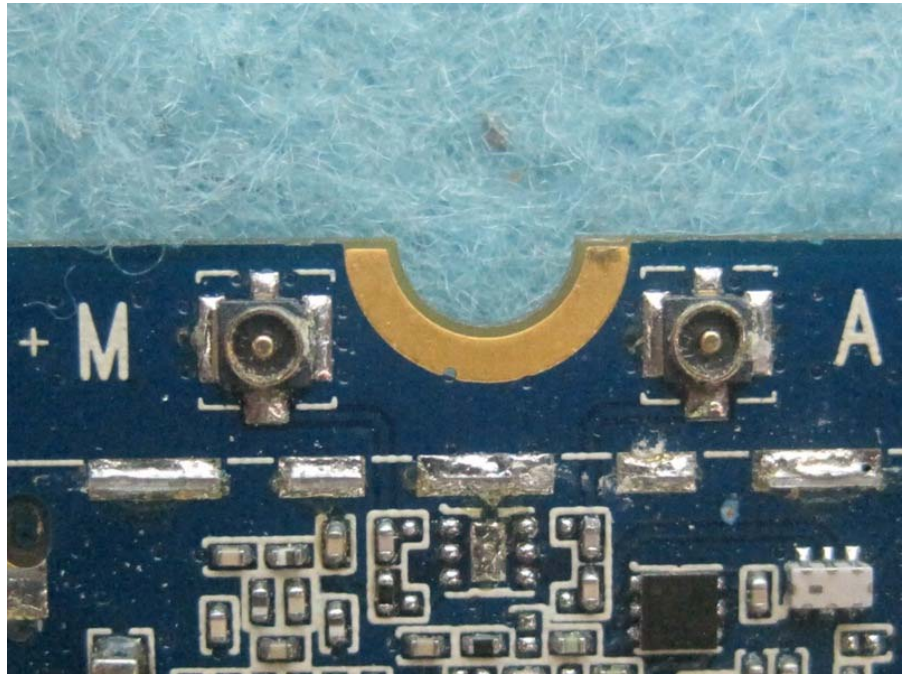




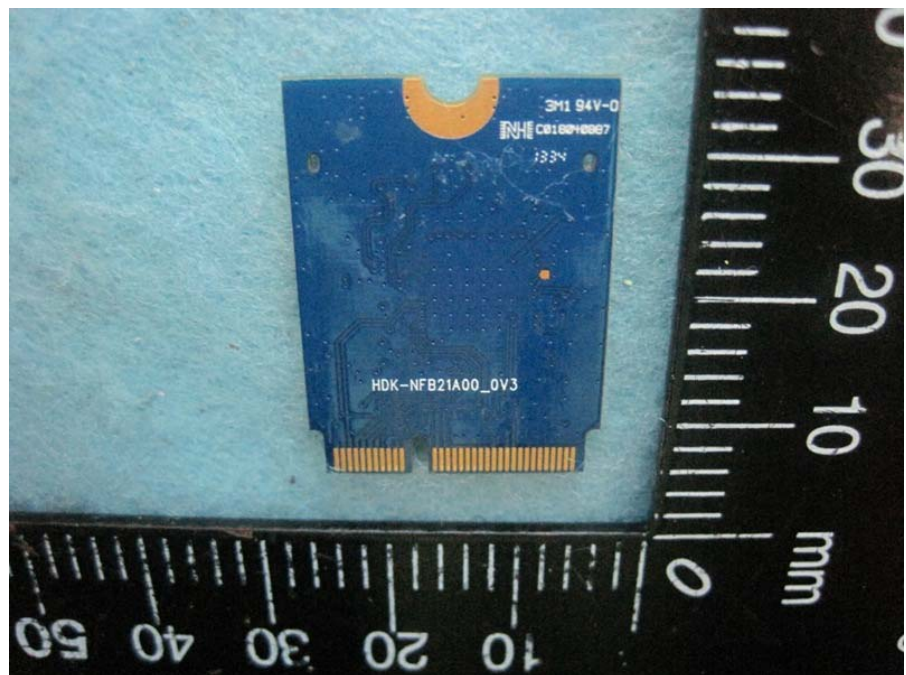
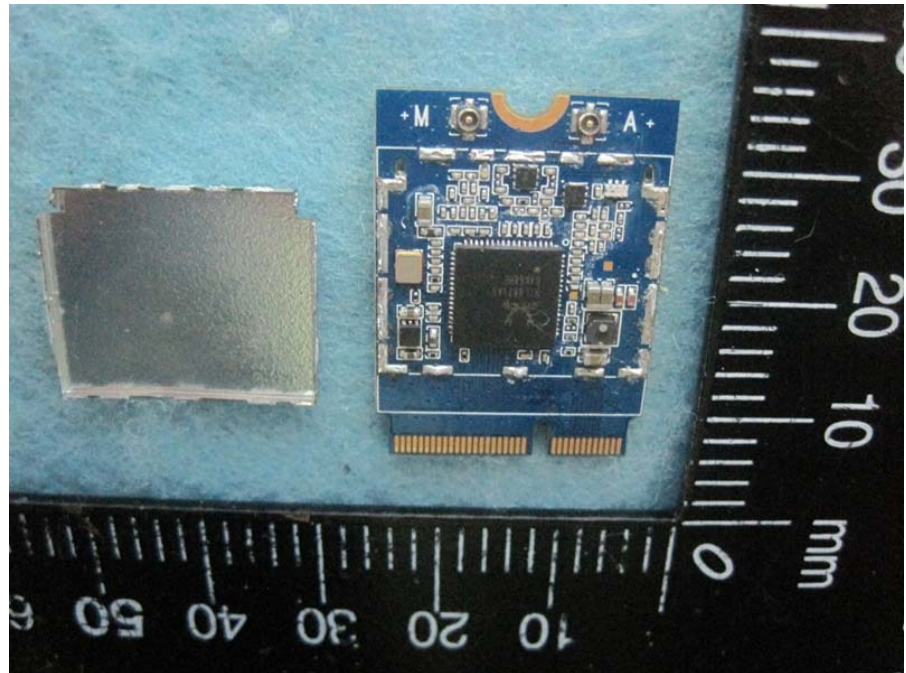
**Configuration 4.**  
**RC Module**  
**NGFF / PCI-E / Fixed**

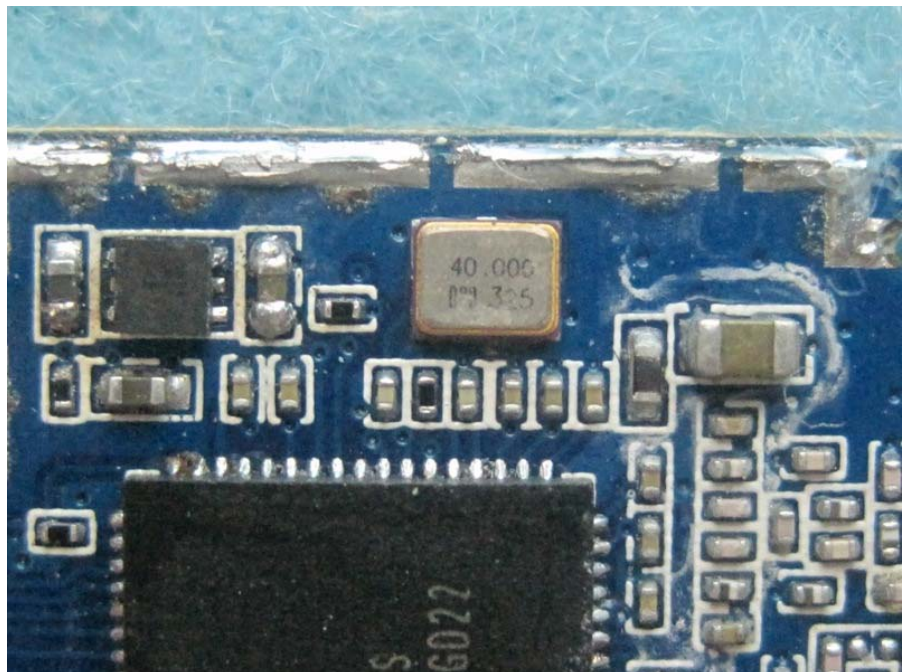


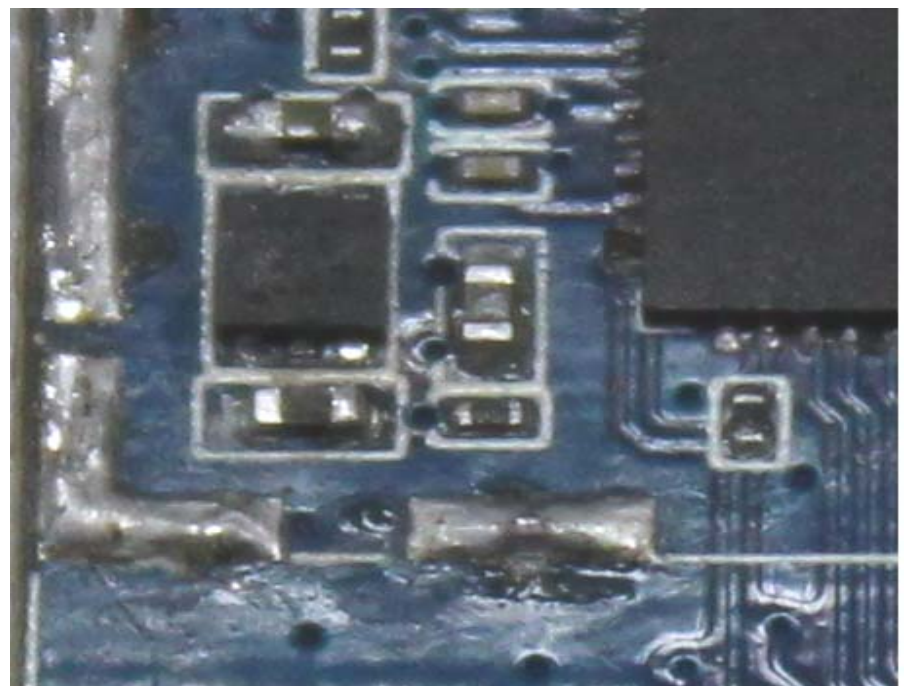
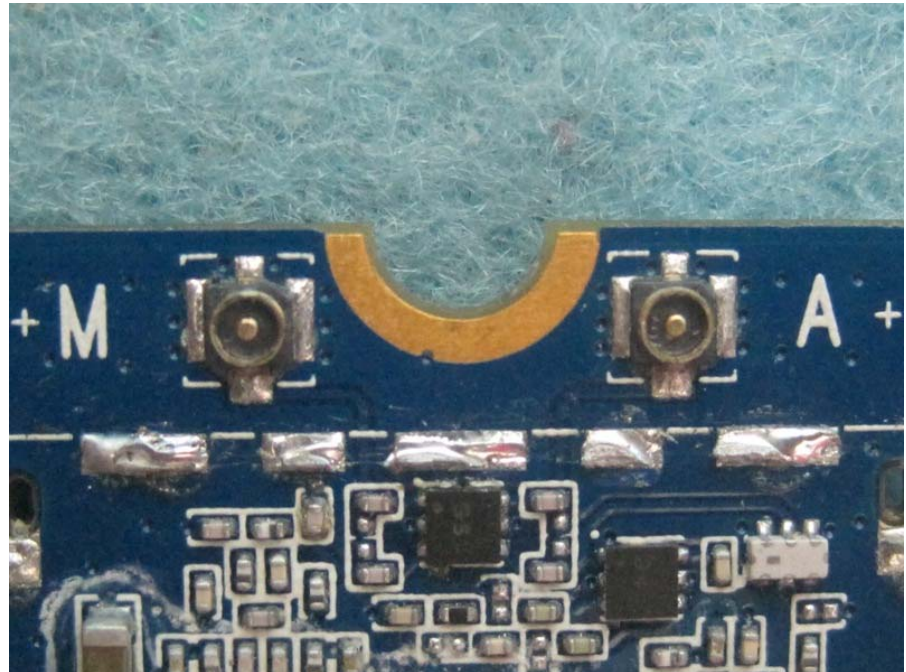




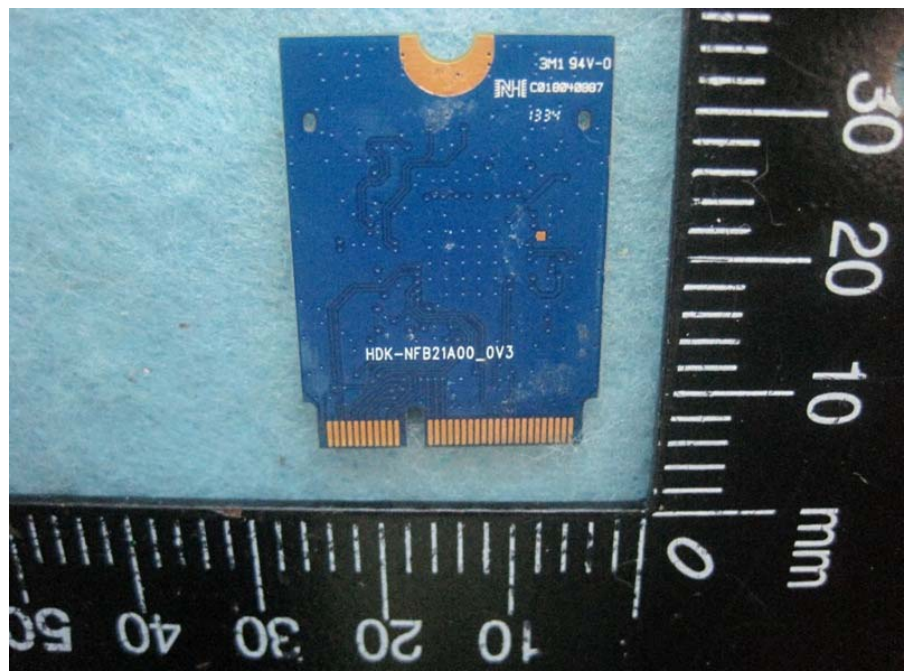
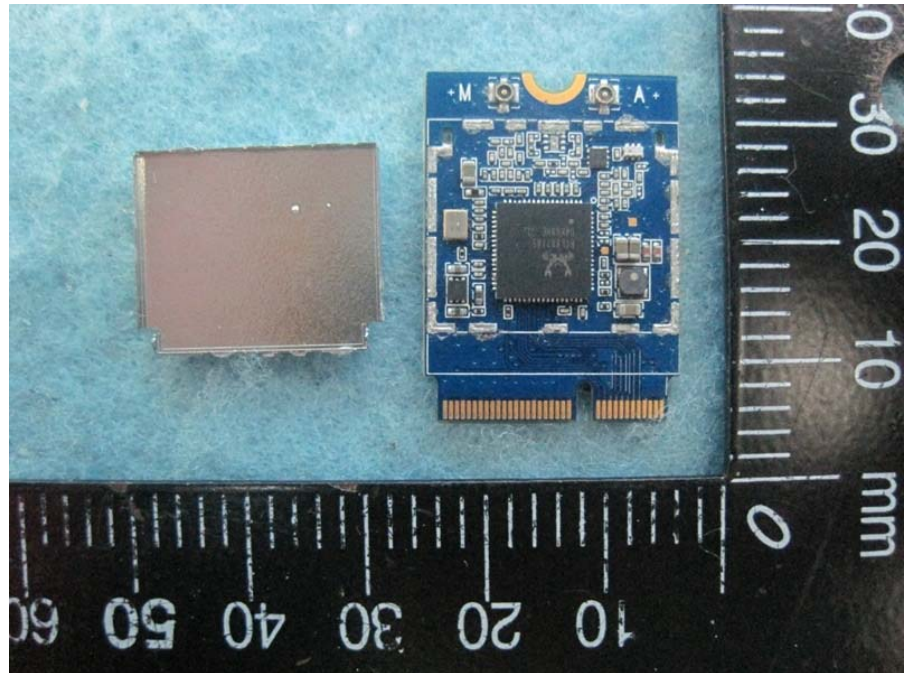
**Configuration 5.**  
**RC Module**  
**NGFF / SDIO / Diversity**



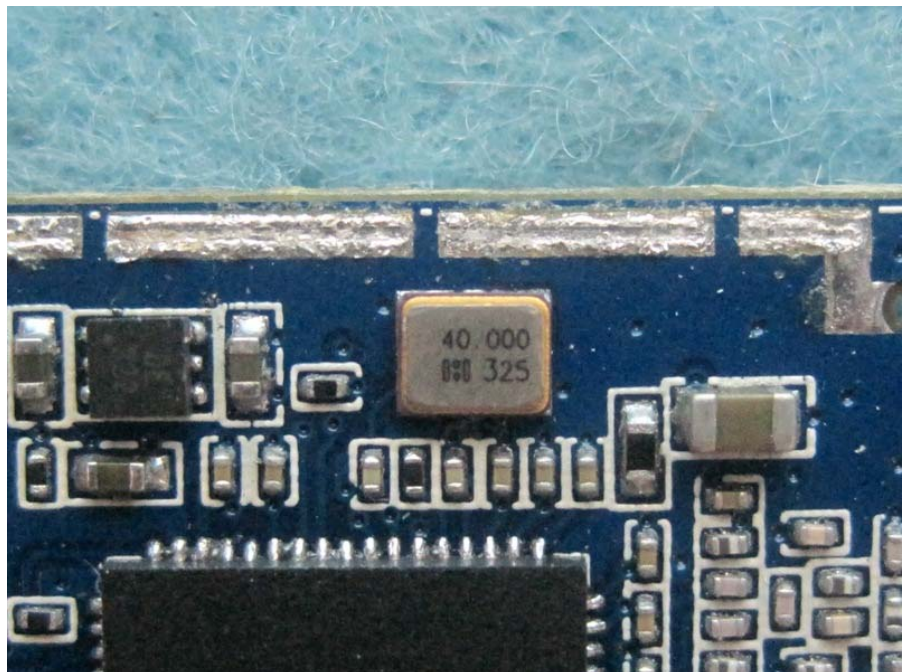


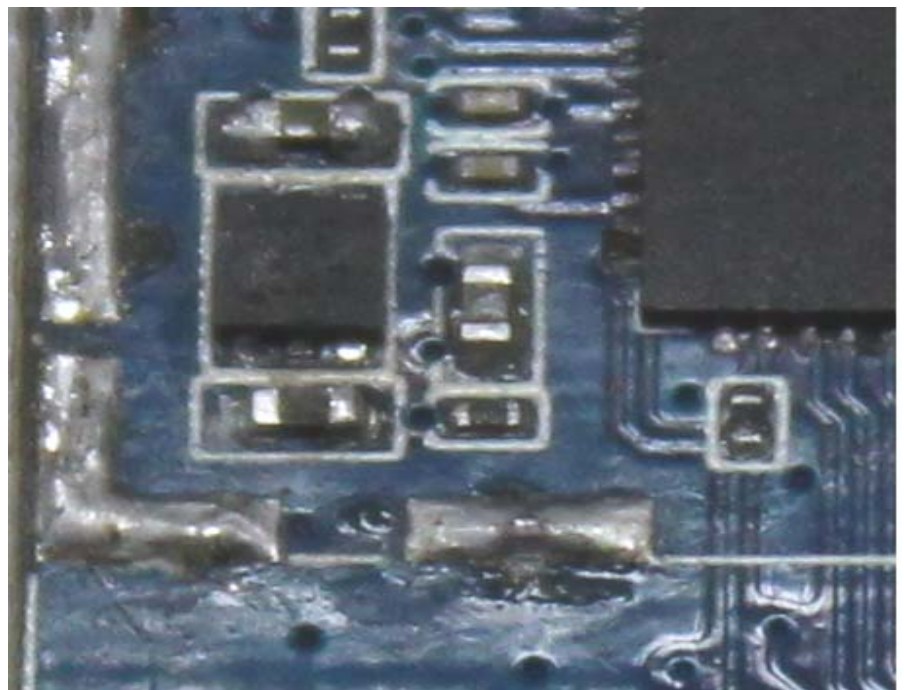
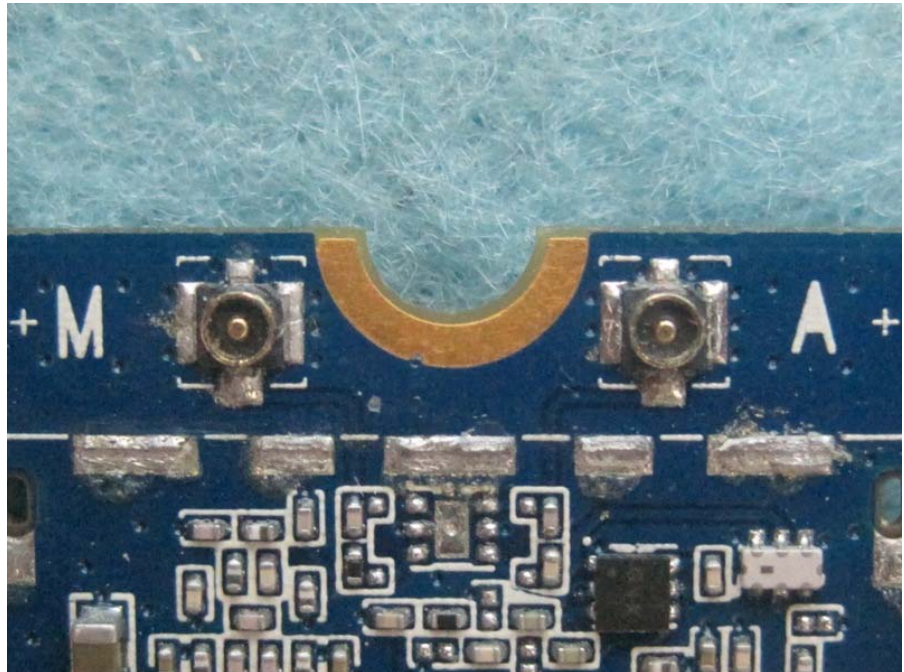


**Configuration 6.**  
**RC Module**  
**NGFF / SDIO / Fixed**

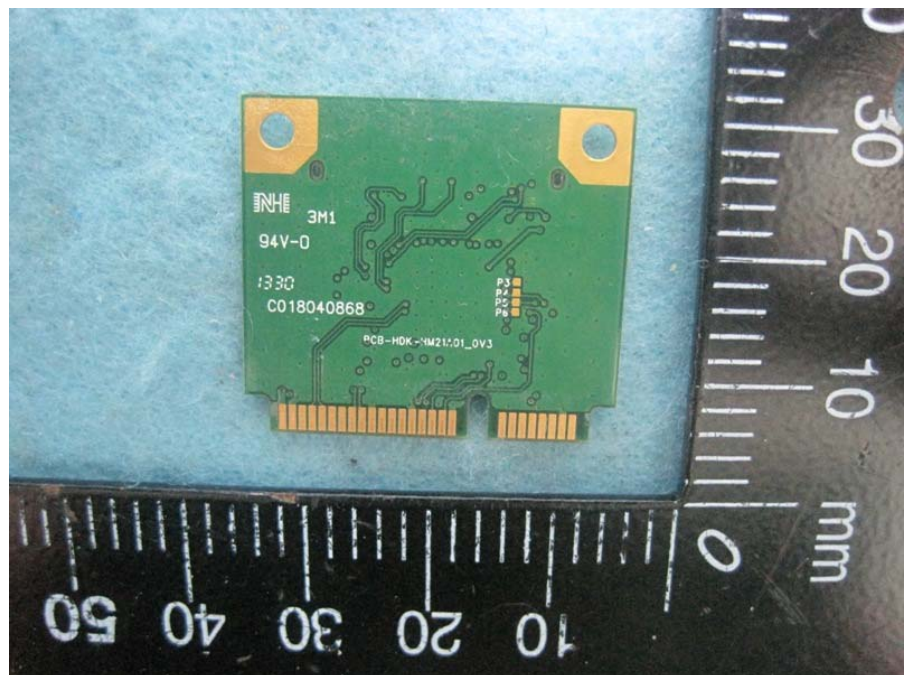
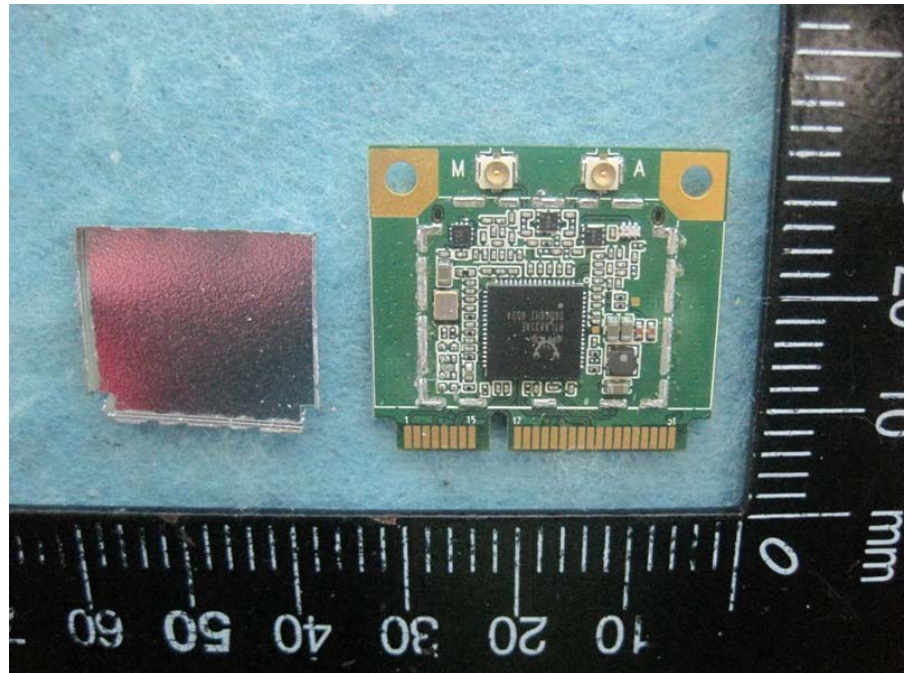


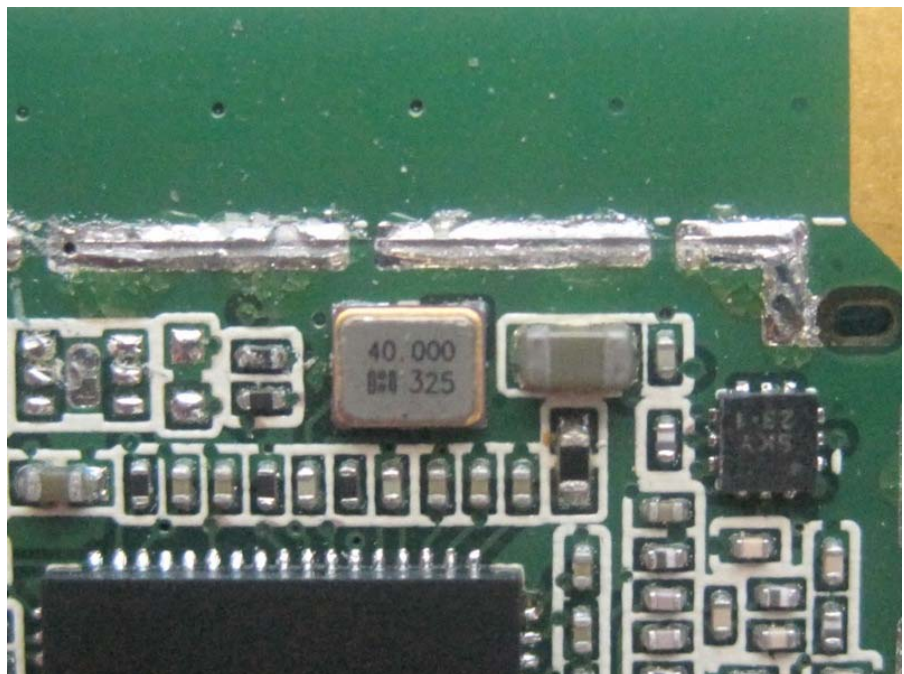


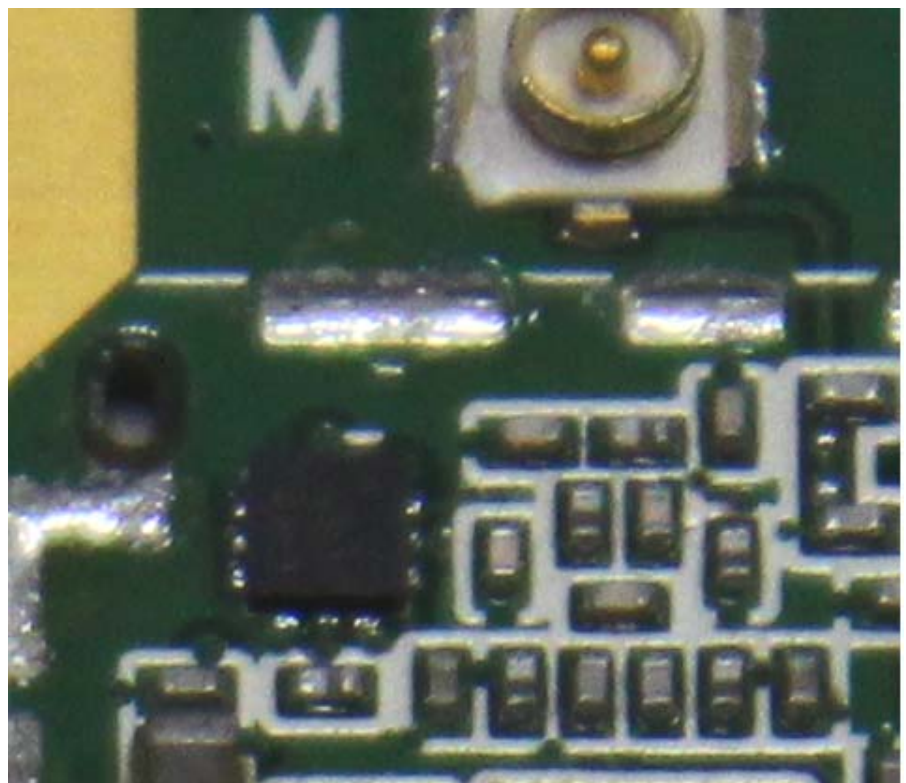
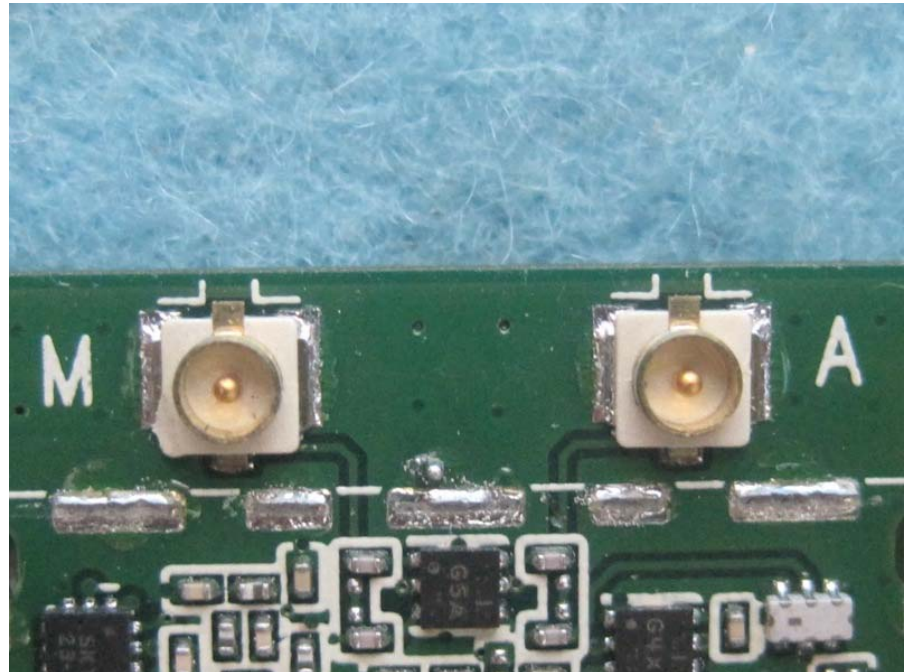


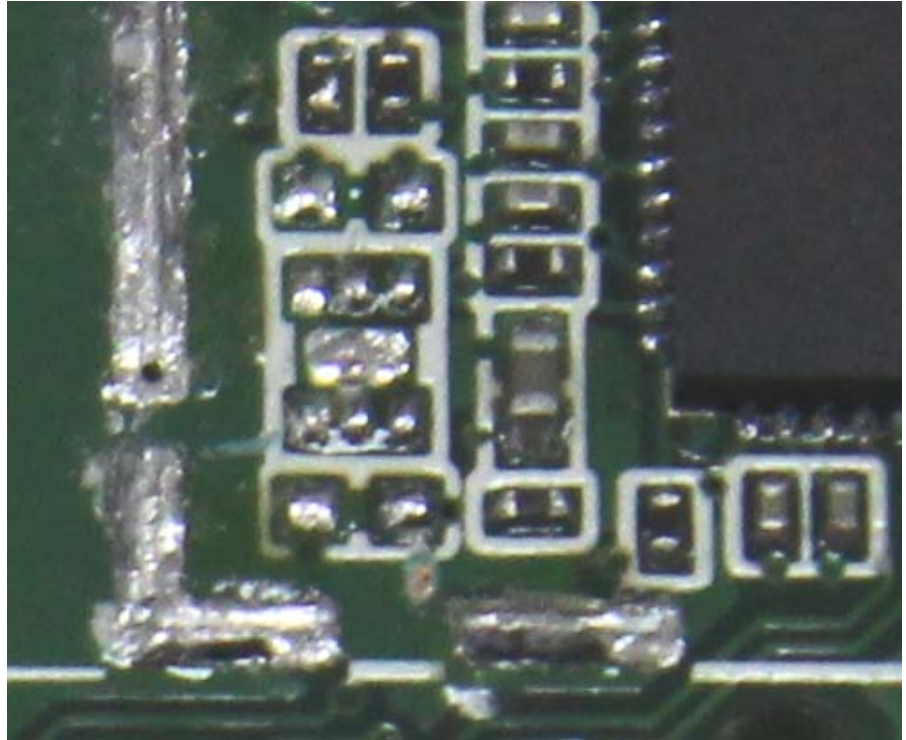


**Configuration 7.**  
**RC+LNA Module**  
**HMC / PCI-E / Diversity**









**Configuration 8.**  
**RC+LNA Module**  
**HMC / PCI-E / Fixed**

