

1

Preface



Tablet PC User's Manual



Contents

Chapter 1: Preface

Content	1-2
Regulations and Statements	1-4
FCC-B Radio Frequency Interference Statement	1-4
FCC Conditions	1-4
FCC	1-5
IC	1-5
CE Conformity	1-5
Battery Regulations	1-6
WEEE Statement	1-6
Safety Instructions	1-7
Trademarks	1-9
Reversion History	1-9

Chapter 2: Introductions

Manual Map	2-2
Unpacking	2-2
Product Overview	2-3
Top-Open View	2-3
Specification	2-6

Chapter 3: Getting Started

Begin to Use the Tablet PC	3-2
Power Management	3-2
AC Power	3-2
Connecting the AC Power	3-2
Battery Power	3-3
Powering ON	3-4
Power Management in Windows OS	3-5
Basic Operations	3-7

Inserting a Micro-SD Card or SIM Card to Your Tablet	
PC PC	3-7
Knowing the Display Features.....	3-8
Using the Fingerprint Reader	3-9
Wireless Activation for Windows 8	3-11
Connecting the External Devices	3-12
Peripheral Devices	3-12
Wireless / Bluetooth / Camera Functions.....	3-13

❖ Regulations and Statements

FCC-B Radio Frequency Interference Statement

This equipment has been tested and found to comply with the limits for a Class B digital device, pursuant to part 15 of the FCC rules. These limits are designed to provide reasonable protection against harmful interference in a residential installation. This equipment generates, uses and radiates radio frequency energy, and, if not installed and used in accordance with the instructions, may cause harmful interference to radio communications. However, there is no guarantee that interference will not occur in a particular installation. If this equipment does cause harmful interference to radio or television reception, which can be determined by turning the equipment off and on, the user is encouraged to try to correct the interference by one or more of the following measures:

- Reorient or relocate the receiving antenna.
- Increase the separation between the equipment and receiver.
- Connect the equipment into an outlet on a circuit different from that to which the receiver is connected.
- Consult the dealer or an experienced radio TV technician for help.

NOTE

- ♦ The changes or modifications not expressly approved by the party responsible for compliance could void the user's authority to operate the equipment.
- ♦ Shield interface cables and AC power cord, if any, must be used in order to comply with the emission limits.

FCC Conditions

This device complies with part 15 of the FCC Rules. Operation is subject to the following two conditions:

- This device may not cause harmful interference.
- This device must accept any interference received, including interference that may cause undesired operation.

FCC

FCC RF Radiation Exposure Statement:

This equipment complies with FCC RF radiation exposure limits set forth for an uncontrolled environment. This device was tested for typical lap held operations with the device contacted directly to the human body to the back side of the notebook computer. To maintain compliance with FCC RF exposure compliance requirements, avoid direct contact to the transmitting antenna during transmitting SAR information 1.56 W/kg@1g (body)

IC

The product comply with the Canada portable RF exposure limit set forth for an uncontrolled environment and are safe for intended operation as described in this manual. The further RF exposure reduction can be achieved if the product can be kept as far as possible from the user body or set the device to lower output power if such function is available. SAR information 1.56 W/kg@1g (body)

Industry Canada

This Class B digital apparatus complies with Canadian ICES-003. To reduce potential radio interference to other users, the antenna type and its gain should be so chosen that the equivalent isotropically radiated power (e.i.r.p.) is not more than that permitted for successful communication. This device complies with Industry Canada licence-exempt RSS standard(s).

Operation is subject to the following two conditions:

1. This device may not cause interference, and
2. This device must accept any interference, including interference that may cause undesired operation of the device.

Cet appareil numérique de la classe B est conforme à la norme NMB-003 Canada.

Pour réduire le risque d'interférence aux autres utilisateurs, le type d'antenne et son gain doivent être choisis de façon que la puissance isotrope rayonnée équivalente (PIRE) ne dépasse pas ce qui est nécessaire pour une communication réussie.

Cet appareil est conforme à la norme RSS Industrie Canada exempts de licence norme(s). Son fonctionnement est soumis aux deux conditions suivantes:

1. Cet appareil ne peut pas provoquer d'interférences et
2. Cet appareil doit accepter toute interférence, y compris les interférences qui peuvent causer un mauvais fonctionnement du dispositif.

CE Conformity



This device is in compliance with the essential safety requirements and other relevant provisions set out in the European Directive.

Battery Regulations



European Union:

Batteries, battery packs, and accumulators should not be disposed of as unsorted household waste. Please use the public collection system to return, recycle, or treat them in compliance with the local regulations.



廢電池請回收

Taiwan:

For better environmental protection, waste batteries should be collected separately for recycling or special disposal.

California, USA: The button cell battery may contain perchlorate material and requires special handling when recycled or disposed of in California.

For further information please visit: <http://www.dtsc.ca.gov/hazardouswaste/perchlorate/>

Safety Guideline for Using Lithium Battery

Danger of explosion if battery is incorrectly replaced. Replace only with the same or equivalent type recommended by the equipment manufacturer. Discard used batteries according to manufacturer's instructions.

WEEE Statement

Under the European Union ("EU") Directive on Waste Electrical and Electronic Equipment, Directive 2002/96/EC, which takes effect on August 13, 2005, products of "electrical and electronic equipment" cannot be discarded as municipal waste anymore and manufacturers of covered electronic equipment will be obligated to take back such products at the end of their useful life.



❖ Safety Instructions



Read the safety instructions carefully and thoroughly. All cautions and warnings on the equipment or user's manual should be noted.



Keep this equipment away from humidity and high temperature.



Lay this equipment on a stable surface before setting it up.



The openings on the enclosure are used for air convection and to prevent the equipment from overheating. Do not cover the openings.



- Do not leave the equipment in an unconditioned environment with a storage temperature above 60°C (140°F) or below 0°C (32°F), which may damage the equipment.
- This unit should be operated under maximum ambient temperature of 40°C (120°F).



- Make sure the power voltage is within safety range and has been adjusted properly to the value of 100~240V before connecting the equipment to the power outlet.
- Always unplug the AC power cord before installing any add-on card or module to the equipment.
- Always disconnect the AC power cord or uninstall the battery pack or switch off the wall socket if the equipment would be left unused for a certain time to achieve zero energy consumption.



Never pour liquid into the opening that could damage the equipment or cause an electrical shock.



Place the power cord in a way that people are unlikely to step on it. Do not place anything on top of the power cord.



Always keep the strong magnetic or electrical objects away from the equipment.



When installing the coaxial cable to the TV Tuner, it is necessary to ensure that the metal shield is reliably connected to protective earthing system of the building.

Cable distribution system should be grounded (earthed) in accordance with ANSI/NFPA 70, the National Electrical Code (NEC), in particular Section 820.93, Grounding of Outer Conductive Shield of a Coaxial Cable.



If any of the following situations arises, get the equipment checked by a service personnel:

- ♦ The power cord or plug is damaged.
- ♦ Liquid has penetrated into the equipment.
- ♦ The equipment has been exposed to moisture.
- ♦ The equipment has not worked well or you can not get it work according to User's Manual.
- ♦ The equipment was dropped and damaged.
- ♦ The equipment has obvious signs of breakage.

Green Product Features

- ♦ Reduced energy consumption during use and stand-by
- ♦ Limited use of substances harmful to the environment and health
- ♦ Easily dismantled and recycled
- ♦ Reduced use of natural resources by encouraging recycling
- ♦ Extended product lifetime through easy upgrades
- ♦ Reduced solid waste production through take-back policy



Environmental Policy

- ♦ The product has been designed to enable proper reuse of parts and recycling and should not be thrown away
- ♦ Users should contact the local authorized point of collection for recycling and disposing of their end-of-life products.

❖ Trademarks

- All trademarks are the properties of their respective owners.
- SRS Premium Sound, SRS and the symbol are trademarks of SRS Labs, Inc.
- THX and THX TruStudio Pro are trademarks of THX Ltd. which may be registered in some jurisdictions. All rights reserved.

❖ Revision History

Version	Revision History	Date
1.0	First Released	09, 2013

2

Introductions



Congratulations on becoming an user of this product, the finely designed Tablet PC. This brand-new exquisite Tablet PC will give you a delightful and professional experience in using it. We are proud to tell our users that this product is thoroughly tested and certified by our reputation for unsurpassed dependability and customer satisfaction.

❖ Manual Map

This User's Manual provides instructions and illustrations on how to operate this Tablet PC. It is recommended to read this manual carefully before using this Tablet PC.

Chapter 1, Preface: Provide users the basic safety information and caution that is relevant when using this Tablet PC. It is recommended to read these information or caution when using this Tablet PC for the first time.

Chapter 2, Introductions: Include the descriptions of all the accessories of this Tablet PC. It is recommended to check out that if you have all the accessories included when you open the packing box. If any of these accessories is damaged or missing, please contact the vendor where you purchased this product. Also, this chapter provides the specification of this Tablet PC, and introduces the function buttons, connectors, LED of this product.

Chapter 3, Getting Started: Provide the basic operation instructions when using this Tablet PC.

❖ Unpacking

First, unpack the shipping carton and check all items carefully. If any item contained is damaged or missing, please contact your local dealer immediately. Also, keep the box and packing materials in case you need to ship the unit in the future. The package should contain the following items:

- Tablet PC
- Quick Start Manual
- AC/DC adapter / Interchangeable Plug
- Y Cable (Female USB Port and Power Jack)
- USB Charging Cable



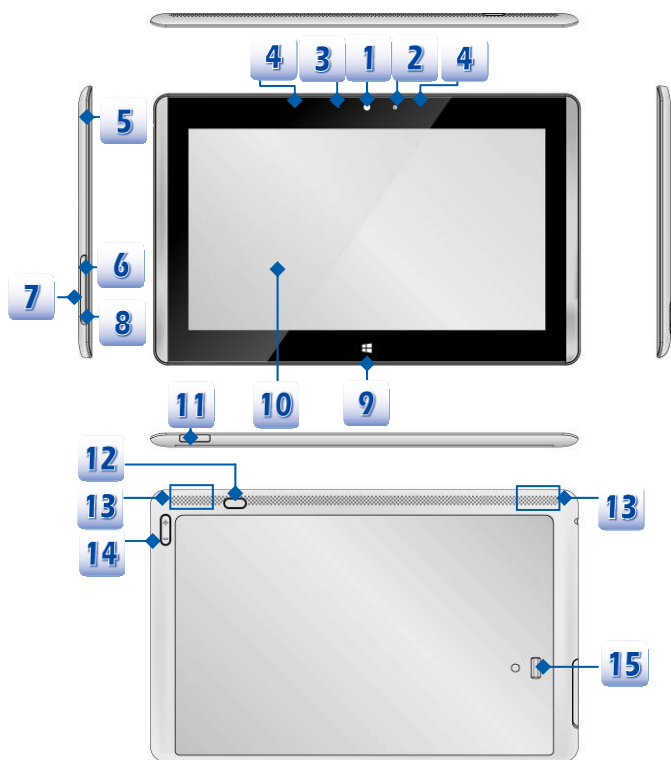
These accessories listed above may change without notice.

❖ Product Overview

This section provides the description of basic aspects of the Tablet PC. It will help you to know more about the appearance of this device before using it. Please be aware that the PC shown in this section may vary from the actual one that users purchased.

Top-open View

The figure of top-open view and description shown below will lead you to browse the main operating area of this Tablet PC.



The figures show here are for reference only.

1. Front Camera

This built-in front camera can be used for picture taking, video recording or conferencing, and any other interactive applications.

2. Light Sensor

With Light Sensor function turned on, this Tablet PC is capable to adjust the display brightness level higher or lower according to the surrounding light source. Refer to Light Sensor switch icon under **[Settings/ Change PC Settings/ PC Settings/ General/ Screen]** on the desktop to check the function status.

3. Camera LED

Camera LED indicator, next to the front camera, glows when webcam function is activated; LED goes out when this function is turned off.

4. Internal Microphone

This is the built-in microphone and its function is the same with microphone.

5. Headphone Jack

Used for connecting the speakers or headphones.

6. SIM Card Slot (optional)

Used for inserting or replacing SIM card to activate 3G/ LTE function.

**** Please push the SIM card inward to eject it, do not force to remove it or the SIM card slot will be damaged.***

7. Micro-SD Card Slot

Used for inserting or replacing micro-SD card to increase the storage capacity of the Tablet PC.

8. Reset Hole

If the Tablet PC cannot be turned off normally or no respond by pressing the power button for 4 seconds, insert a straightened paperclip to the hole.

Note that in this case, AC power must be connected before restarting the Tablet PC.

9. Windows Key

Touching the Windows key can switch to the Metro APPs.

10. Touch Screen

Whenever the display is rotated, the touch screen will be rotated and expanded to fit the display automatically.

**** This function will be changed depends on the user's settings.***

11. Dock Connector

A dock connector is an expansion unit used to attach a mobile electronic device simultaneously to multiple external resources.

**** Do not support external HDD or ODD.***

12. Power Button

Press this button to turn this product ON and OFF.

** i. Before powering on the Tablet PC for the very first time, you must connect it with AC power.*

ii. Press and hold the power button for 4 seconds can shut down the Tablet PC.

13. Speaker

Support high quality sound.

14. Volume Up / Volume Down Button

Press the Volume Up or Volume Down button to adjust the sound volume.

15. Fingerprint Reader

This is the security protection device for the Tablet PC.

❖ Specification

The Specification may change without notice. The actual products sold may differ and depend on areas. Please check the detailed Specification with your local dealers.

Physical Characteristic	
Dimension	307.9 (W) x 195.8 (D) x 9.9 (H) mm
Weight	688g
CPU	
Processor Type	AMD® Dual Core Processor
Supported Processor	AMD® Temash
Memory	
Technology	DDR3L 1066 MHz
Memory	2GB on board
Maximum	up to 2 GB
Power	
AC/DC Adapter	18W, 12V, 1.5A
RTC Battery	Yes
Storage (items listed here may vary without notice)	
SSD	mSATA 64 / 128GB
I/O Port	
Headphone Jack	x 1
Internal Microphone	x 1
Fingerprint Reader	x 1
Dock Connector (40 pin)	x 1
SIM Card Slot	x 1 (optional)

Micro-SD Card Slot	x 1 The supported memory cards may vary without notice.
Communication Port	
Wireless LAN	Supported
Bluetooth	Supported
Display	
LCD Type	11.6", IPS display
Resolution	1366 x 768
Multi Touch	10-Point Touch Supported
Brightness	Brightness controlled by setting
Video	
Graphics	UMA
Audio	
Internal Speaker	2 speakers
Sound Volume	Adjust by volume button & SW
WebCam	
Front Camera	720P (1280x720) pixels camera
Others	
e-Compass	Supported
G-Sensor	Supported
Gyroscope	Supported
Light-Sensor	Supported
Vibration Motor	Supported
The actual function preinstalled in this product depends on the model you purchased, and may vary without notice.	

3

Getting Started



❖ Power Management

AC Power

It is strongly recommended to connect the AC/DC adapter to the Tablet PC and use the AC power while using this Tablet PC for the first time. When the AC power is connected, recharging the battery will start immediately.

Note that the AC/DC adapter included in the package is approved for your Tablet PC; using other adapter model may damage either the Tablet PC or other devices attached to it.

Do not cover the AC/DC adapter since it may generate a certain heat while in use. Always be aware of heat coming from the AC/DC adapter in use.

Connecting the AC Power

1. Pick up the interchangeable plug. Look for the groove on the interchangeable plug which can be used for locking on the AC/DC adapter. Then align the groove of the interchangeable plug on the tenon of the AC/DC adapter with correct orientation. Rotate the interchangeable plug 90 degrees clockwise until it is fixed on the AC/DC adapter.
2. Plug the DC plug of the AC/DC adapter in the power jack of the Y cable; then plug the Y cable in the Dock Connector of the Tablet PC.
3. Finally, plug the joined AC/DC adapter in the power outlet

Note: i. The interchangeable plug may vary depending on countries or regions.

ii. It is recommended that the source power current should be higher than or equals to 1.5A when using USB charging cable.



Battery Power

This Tablet PC is equipped with a built-in high-capacity Li-ion Polymer battery pack. The rechargeable Li-ion Polymer battery pack is an internal power source of the Tablet PC.

Be aware that this battery pack may be damaged if users try to disassemble the battery pack on their own. Also, please note that the limited warranty of the battery pack will be voided if the battery pack is disassembled by non-authorized technicians.

Please follow your local laws and regulations to recycle the Tablet PC and the built-in battery pack.

Conserving Battery Power

Efficient battery power is critical to maintain a normal operation. If the battery power is not managed well, the saved data and customized settings may be lost.

To optimize battery life and avoid a sudden power loss, read the tips below:

- Suspend system operation if the system will be idle for a while or shorten the suspend timer's time period.
- Turn off the system if you won't be using it for a period of time.
- Disable unnecessary settings or remove idle peripherals.
- Connect an AC/DC adapter to the system whenever possible.

Charging the Battery Pack

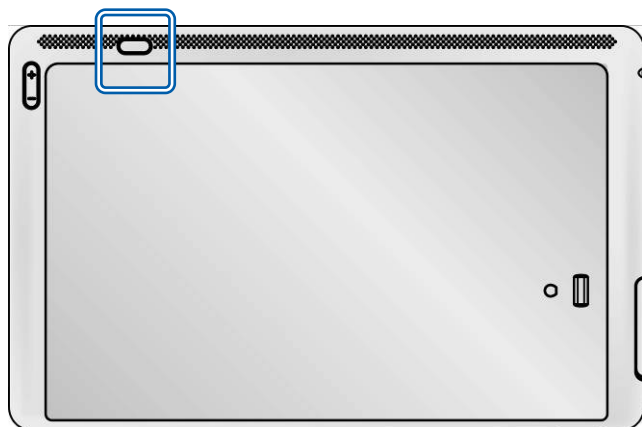
The built-in battery pack can be recharged when the Tablet PC is connected to the AC power.

Please pay attention to the following tips before recharging the battery:

- You can use the system, suspend system operation or shut down and turn off the system without interrupting the charging process.
- The built-in battery pack uses Lithium-ion Polymer battery cells that have no "memory effect." It is unnecessary to discharge the battery before recharging. However, to optimize the life of battery, we suggest that consuming the battery power completely once a month is necessary.
- The actual charging time will be determined by the applications in use.

Powering ON

Long press the Power Button to power on the Tablet PC.



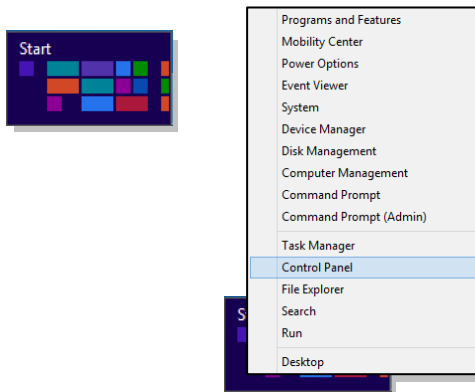
Power Management in Windows OS

Power management of personal computers (PCs) and monitors has the potential to save significant amounts of electricity as well as deliver environmental benefits. To be energy efficient, turn off your display or set your Tablet PC to standby/hibernate mode after a period of user inactivity.

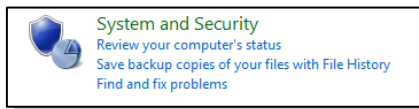
Follow the instructions below to adjust the power management settings in Windows OS:

“**Power Options**” in Windows OS allows you to control the power management features of your display, hard drive, and battery.

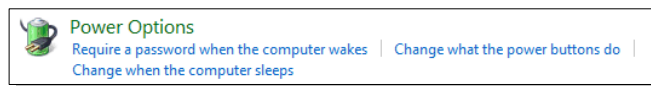
- 1 Drag the mouse cursor to the lower left corner of the screen and **Start** icon will show up. Tap the icon to show the selection menu. Select **Control Panel** in the menu.



- 2 Tap **System and Security**.

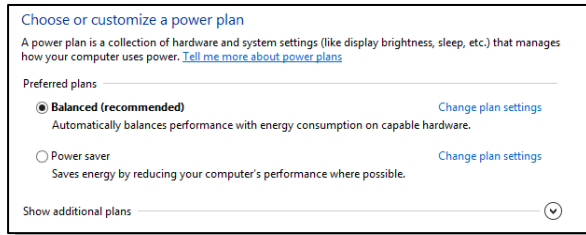


- 3 Tap **Power Options**.



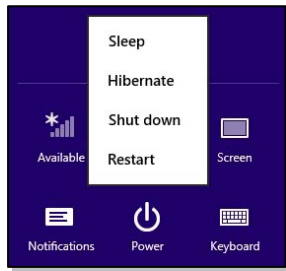
4

Then select a power plan that meets your personal needs.



5

The Power icon will present various and relative options as following:



6

You can wake up your computer from power saving mode by pressing the power button.

❖ Basic Operations

Inserting a Micro-SD Card or SIM Card to Your Tablet PC

The Tablet PC is a portable platform that allows you to work anywhere. However, choosing a good workspace is important if you have to work with your Tablet PC for a long period of time.

You may purchase the Micro-SD card to increase the storage capacity of the Tablet PC, or SIM card to activate 3G/ LTE function, please follow the steps below to insert or replace it:

1. Please power off the Tablet PC before inserting or ejecting the SIM card.
2. Locate the Micro-SD card and SIM card slot on the Tablet PC as shown.
3. Dig the edge of the Micro-SD card and SIM card slot cover with your finger tip carefully.
4. Insert or replace the Micro-SD card/ SIM card into the corresponding slot with correct direction as shown. Then close the slot cover of the Tablet PC. (The figures of Micro-SD card and SIM card here are for reference only)



Knowing the Display Features

Ten-point-touch IPS Display




This Tablet PC is equipped with a ten-point-touch IPS display which delivers consistent and accurate color from all viewing angles, and makes viewing more pleasure with vivid and clear picture on the screens. Users are allowed to use finger gestures to interact with multi-media content, play games, read e-books, access documents, create special effects, manipulate art and photographs, and even surf on the internet, in a truly unique and compelling way.

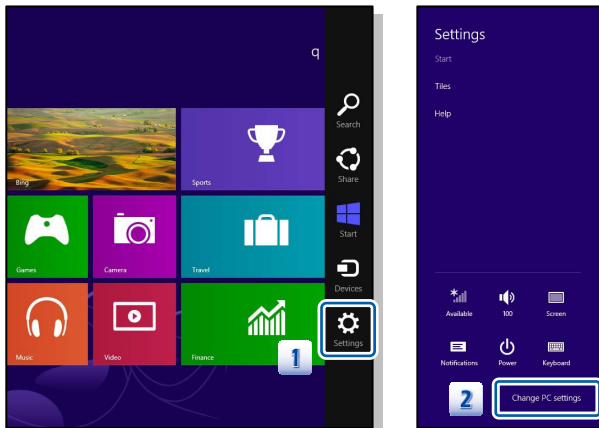
Light Sensor

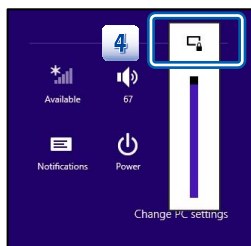
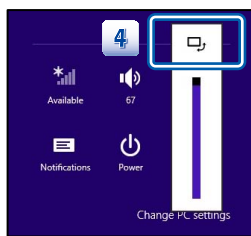
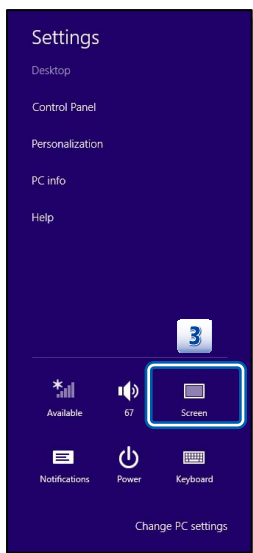
With Light Sensor function turned on, this Tablet PC is capable to adjust the display brightness level higher or lower according to the surrounding light source. Refer to Light Sensor switch icon under **[Settings/ Change PC Settings/ General/ Screen]** on the desktop to check the function status.

Display Lock

With a built-in G-sensor module, this IPS display gives users a more flexible way in viewing web pages, documents, pictures, videos, etc. Whenever the display is rotated, the screen will be rotated and expanded to fit the display automatically.

1. Find the **[Settings]** icon on the desktop and tap it.
2. Enter the **[PC Settings]** main page by tapping **[Change PC Settings]**.
3. Select this Screen icon  to enable this function.
4. Tap this  icon again will lock the screen .

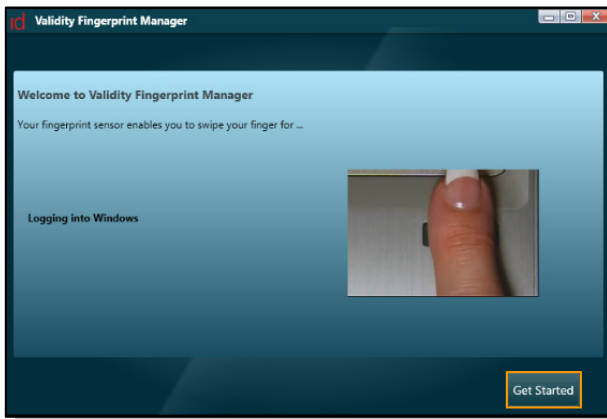




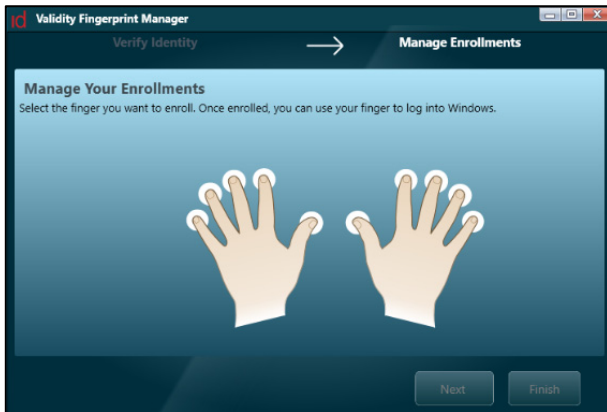
Using the Fingerprint Reader

1. Find the [id] Validity FMA icon on the desktop and tap it.
2. Enter the [Validity Fingerprint Manager] main page to set up Fingerprint Reader login security.
3. Select the finger you would like to enroll, then you can use it to log into Windows next time.
4. Swipe the selected finger on the sensor of the Fingerprint Reader. The Maximum is 8 swipes. You might be requested to ensure the fingerprint is correctly recorded a couple of times.
5. Fingerprint enrolled process is completed.

2



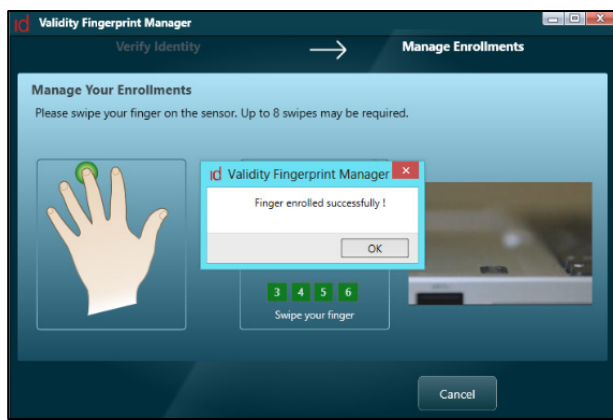
3



4

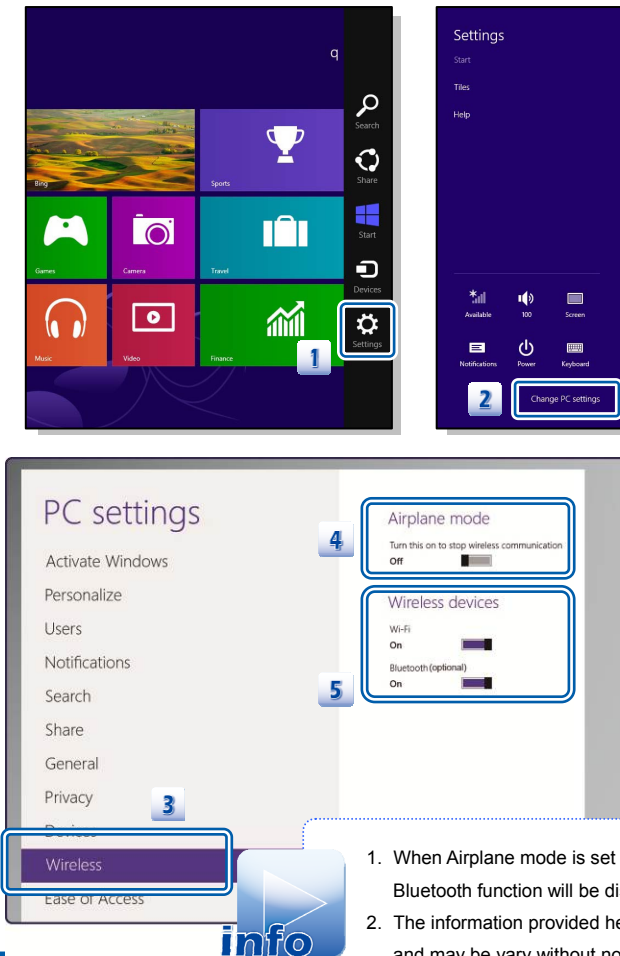


5



Wireless Activation for Windows 8

1. Find the **[Settings]** icon on the desktop and tap it.
 2. Enter the **[PC Settings]** main page by tapping **[Change PC Settings]**.
 3. Unfold the **[Wireless devices]** selections under **[Wireless]**.
 4. Make sure Airplane mode is set to OFF here.
 5. Turn the WLAN or Bluetooth function on/off by sliding the function switch bar.
- Refer to the Status LED to check the device status.



1. When Airplane mode is set to ON, the WLAN and Bluetooth function will be disabled at once.
2. The information provided here is for reference only, and may vary without notice.


❖ Connecting the External Devices

The female USB Port of the Y cable can be used to connect a mouse, a keyboard, or an USB disk. It does not support external HDD or ODD. All devices listed here are for reference only.

Peripheral Devices



Wireless / Bluetooth/ Camera Functions

1. Tap the **[SCM]** icon  on the desktop to bring SCM (System Control Manager) screen.
2. Find Wireless, Bluetooth and Camera in SCM screen, tapping the corresponding icon to enable/ disable the device.
3. After enabling wireless or camera function, tap the windows key can switch the present display to Win8 main screen. Then you can use the internet explorer or camera for your own desire.

