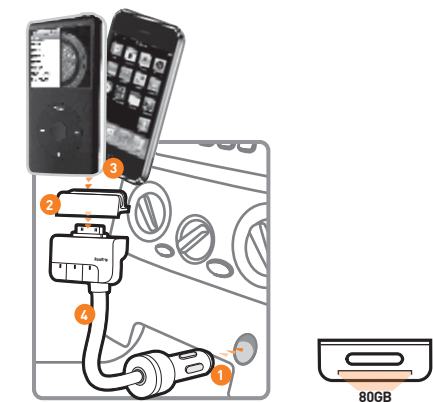


## RoadTrip<sup>®</sup> SMARTSCAN<sup>™</sup> TECHNOLOGY User Guide

Thank you for purchasing Griffin RoadTrip. RoadTrip makes it easy to dock, charge and play your iPhone<sup>®</sup> or iPod<sup>®</sup> in your car. Here's how to get started:

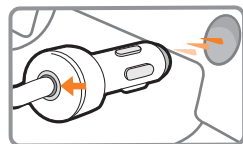


### Connect

1. Plug RoadTrip into your car's cigarette lighter or accessory port.
2. Select the adapter for your iPhone or iPod model and slide it onto RoadTrip's dock connector. (Adapters are labeled on the underside.)
3. Slide your iPhone or iPod into RoadTrip's dock, seating it firmly.
4. Adjust RoadTrip's flexible neck, and rotate the cradle to a convenient position.

### Power & Charge

RoadTrip plugs into your car's cigarette lighter, and will charge and power your iPhone or iPod as you use it. The light ring on the plug shows charging status at a glance: red when connected, amber when charging, and green when charging is finished.



### Play

#### SmartScan to find a frequency

1. When RoadTrip powers up, the default screen will appear.
2. Press FM once to enter FM tuning screen.
3. Press FUNCTION → SCAN. SmartScan scans all available FM frequencies and saves the 3 clearest frequencies to RoadTrip's 3 presets. SmartScan takes just a few seconds to complete the process, then automatically sets to the first preset.
4. **Set your FM stereo**. Tune your car's FM radio to the frequency displayed on RoadTrip's screen.
5. **Play music**. Press Play and enjoy the music.



### Listen

RoadTrip uses SmartSound<sup>™</sup> to optimize both the transmission strength and the sound from your iPod or iPhone to your FM radio. Depending on what you're listening to, you may want to switch between stereo and mono sound. Here's how:

Press FM once to enter FM tuning screen.

Press FUNCTION → MODE → MONO (Broadcasts in mono, resulting in a stronger signal than stereo.)

- ▲ Use for podcasts, talk radio, audiobooks and similar tracks.

- ▲ Use in heavily populated areas where numerous FM stations crowd the dial.

Press FUNCTION → MODE → STEREO (Broadcasts in stereo, for more realistic audio.)

- ▲ Use for music and musical podcasts.

- ▲ Use for best possible Right/Left Channel stereo separation.



### Control

Using the buttons on the front, you can **Skip** to the next track or **Pause** playback on your iPhone or iPod. RoadTrip's buttons have a raised ridge that makes them easy to find by touch. Your eyes never have to leave the road.

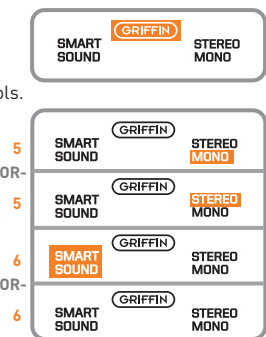
#### To use RoadTrip's playback controls:

1. The default screen displays the playback controls.
2. Press **Play/Pause** to play or pause during playback.
3. **Press and release >>** to skip to the next track; or **press and hold** to scan through the song.
4. Press FM to jump back to the tuning screen.

If the playback controls just aren't for you, press the button under the Griffin logo. The Griffin logo will highlight to turn off the track controls.

#### To optimize the sound of your RoadTrip:

5. Press **Mono/Stereo** to switch back and forth between modes.
6. Press **SmartSound** to toggle on or off the SmartSound<sup>™</sup> function.



#### Using Other Frequencies

In locales with numerous overlapping radio stations, you may need to switch frequencies to get the best possible sound. Here's how:

#### Using the presets

1. Press FM once to enter FM tuning screen.
2. Press FUNCTION → PRESET. Select any of the three saved presets. (RoadTrip will exit this menu automatically after about 3 seconds.)
3. Tune your car's FM radio to the new frequency displayed on RoadTrip's screen.



### Tuning Manually

Manual tuning is a reverse of the SmartScan process; you tune your car stereo first, then adjust RoadTrip to match that frequency.

1. On your car's FM radio, select a frequency on which you hear nothing but static. The ideal choice would have nothing on either of the neighboring frequencies, so listen for 3 in a row with static and select the middle frequency.

2. Press FM once to enter FM tuning screen.
3. Press ▲ or ▼ to set RoadTrip to match that frequency. Press the ▲ or ▼ and hold to move through the frequencies quickly.

#### Setting your own presets

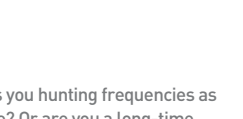
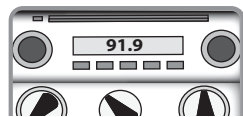
Do you have a long commute that has you hunting frequencies as radio stations fade in and out of range? Or are you a long-time RoadTrip user who already knows the perfect three frequencies? Either way, here's how to set your

1. Press FM once to enter FM tuning screen.

2. Tune your RoadTrip to the desired frequency.

3. Press FUNCTION → PRESFT

4. Press and hold one of the PRESET buttons for 3 sec. The screen will update the preset frequency.



1. Press FM once to enter FM tuning screen.

2. Tune your RoadTrip to the desired frequency.

3. Press FUNCTION → PRESFT

4. Press and hold one of the PRESET buttons for 3 sec. The screen will update the preset frequency.

(RoadTrip will automatically

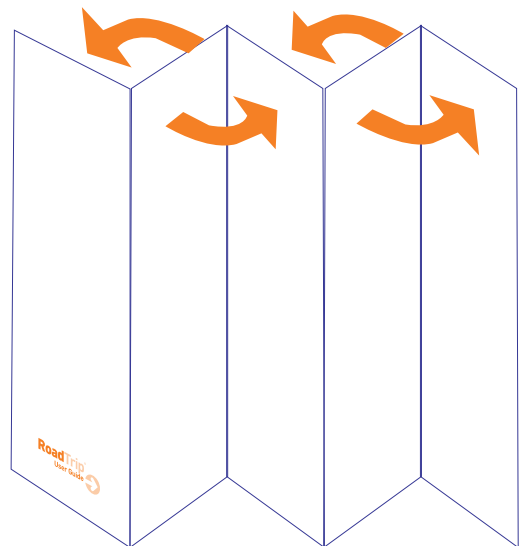
#### Important Info about Using

You may want to temporarily disconnect RoadTrip when using your iPhone in phone mode, or you may consider the use of a Bluetooth<sup>®</sup> earpiece for safety and convenience while driving.

The ringer switch on your iPhone works the same way with RoadTrip as it always does. To avoid missing calls, make sure you understand how the ringer switch works:

**Ringer Switch on:** you will hear the ringtone through your speakers.  
**Ringer Switch off:** You will not hear any ringtone.

If you have music playing when making or accepting a call, your iPhone will fade the music out. When you end your call, the music will resume. If necessary, reconnect iPhone to your RoadTrip.



This information reflects iPhone firmware as of this printing. Changes, if any, as a result of firmware updates will be posted on our website. Visit [www.griffintechology.com/support/](http://www.griffintechology.com/support/) for information on everything RoadTrip.

Note: Please check your local laws before placing and receiving calls on your iPhone while your car is in motion.

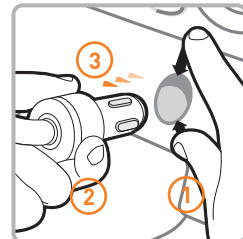
#### Removing RoadTrip from your car

RoadTrip's design holds it firmly in place when fully inserted into your car's cigarette lighter or 12 V power outlet.

DO NOT GRASP ROADTRIP'S NECK AND PULL FROM YOUR CIGARETTE LIGHTER. Doing so may damage RoadTrip's flexible steel neck.

We suggest following these steps for easy, smooth removal of your RoadTrip:

1. Brace the power outlet with your thumb and forefinger, as shown.
2. With your other hand, grip the cigarette lighter adapter as shown.
3. Pull RoadTrip gently, without twisting. Slowly increase the force of your pull if needed.



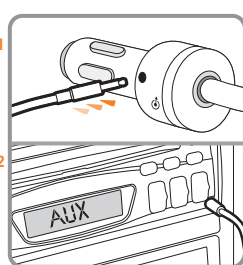
#### Using RoadTrip's A/V Line Out Port

In vehicles with an AUX-In jack or back-seat audio, RoadTrip's A/V Line Out will let you run audio directly to your stereo. Note that when you use RoadTrip's A/V Line Out port, RoadTrip will charge your iPhone or iPod normally.

#### To Connect your iPhone or iPod to your car's AUX Audio In:

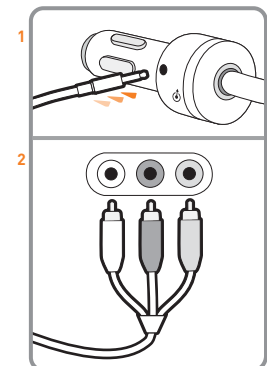
Car stereos with AUX Audio In give you the option to connect to your stereo with Line-level signal.

1. Attach a Stereo Audio Cable (like Griffin's Auxiliary Audio Cable, available at electronics stores), to RoadTrip's A/V Line Out port and your car stereo's AUX Audio In port.
2. Set car stereo to AUX input.



#### To Connect your iPhone or iPod to an in-car video system:

1. Attach a composite audio/video cable (available at electronics stores) to RoadTrip's A/V Line Out port.
2. Attach Video and Right/Left Audio cables to your in-car entertainment system.
3. Navigate to Movies on your iPod, select the movie or video you wish to view and press play. Can someone please pass the popcorn?



Happy motoring!

Visit Griffin Support online at <http://www.griffintechology.com/support/>

#### Troubleshooting

Problems? No problem. Check these tips for a quick fix:

##### FM Radio

- 1. Is the radio on?
- 2. Is the radio tuned to unused frequency?
- 3. Is the radio volume adjusted?

##### RoadTrip

- 1. Do the RoadTrip and radio frequencies match?

##### iPhone or iPod

- 1. Is the hold switch on?
- 2. Is the play button depressed?
- 3. Is the battery completely drained? If so, your iPhone or iPod must recharge for a few short minutes before so your iPhone or iPod will sense a constant current and power up.

##### Fuses

- 1. Is the car's Cigarette Lighter fuse good? (Consult your car's owners manual for fuse locations and specifications).
- 2. RoadTrip is protected against power surges by means of an automatic circuit-breaker, or "smart fuse." If you are certain that RoadTrip is receiving power through your 12 volt socket but refuses to power on, unplug RoadTrip from your 12 volt socket and wait 15 seconds. This resets RoadTrip's smart fuse.

Problem's not solved? No problem.

Call Griffin's Customer Support at 800-208-5996. Monday - Thursday 9 am - 6 pm and Friday 9am - 5pm Central time.

Your call will be answered by real human beings who actually know and use Griffin products.

[www.griffintechology.com/support/](http://www.griffintechology.com/support/)

#### Technical Specifications

- ▲ Antenna: Built-in
- ▲ Power: Provided by the 12 volt cigarette lighter or power outlet (no batteries required)
- ▲ Input voltage range: 12 - 16 volts DC
- ▲ Maximum current: 2 amp
- ▲ Output voltage: 5 volts DC at 1 amp
- ▲ Fuse type: resettable internal fuse
- ▲ Modulation: FM Stereo
- ▲ Available output RF range, US: 88.1 MHz - 107.9 MHz
- ▲ Radio frequency increments, US: 0.2 MHz per step
- Adapters included for:
  - ▲ iPod touch (2nd generation)
  - ▲ iPod nano (4th generation)
  - ▲ iPod classic 120GB/80GB
  - ▲ iPhone 3G
  - ▲ iPod touch (1st generation)
  - ▲ iPhone
  - ▲ iPod nano (3rd generation)
  - ▲ iPod nano (2nd generation)

This device complies with Part 15 of the FCC Rules. Operation is subject to the following two conditions: (1) This device may not cause harmful interference, and (2) this device must accept any interference received, including interference that may cause undesired operation. The manufacturer is not responsible for any radio or TV interference caused by unauthorized modifications to this equipment. Such modifications could void the user's authority to operate the equipment.

Improper usage of this device could result in exposure to RF energy.

#### 1 YEAR WARRANTY

Warranty details at [www.griffintechology.com/support/](http://www.griffintechology.com/support/)

We stand behind every product with the industry's best customer service, backed by a simple, fair warranty. Using this product signifies your acceptance of the terms of the warranty; please read our warranty details at [www.griffintechology.com/support/](http://www.griffintechology.com/support/) before using your Griffin product.

© 2009 Griffin Technology, Inc. • [www.griffintechology.com](http://www.griffintechology.com) • RoadTrip is a registered trademark of Griffin Technology, Inc. • iPod is a trademark of Apple Inc., registered in the U.S. and other countries. • The Bluetooth word mark and logo are registered trademarks owned by Bluetooth SIG, Inc. and any use of such marks by Griffin Technology, Inc. is under license. • Made in Taiwan • Designed in Tennessee • Please recycle this package. • Thank you.

