

QUICK START GUIDE

Thank you for purchasing the Griffin RoadTrip, the Complete Auto Solution for iPod. Now you can play your music in your car while powering your iPod. Follow these easy steps and you'll be up and running in no time.

PREPARING THE IPOD

**Full-size iPod** - attach the included iPod holder holder (2) to the iPod. If the slender models (10, 15, 20 GB) feel loose in the holder, make a snug fit by attaching the Protection Pad (1) to the inside of the iPod holder. If you are using the iPod with Video, make a snug fit by attaching the Extra Thick Protection Pad (11) to the inside of the iPod holder. Slide the belt clip into the RoadTrip body (4). You will not need the clip holder (3).

**iPod mini** - attach the belt clip that came with your iPod mini. The belt clip will slide into the clip holder (3). Next, slide the clip holder in to the RoadTrip body (4).

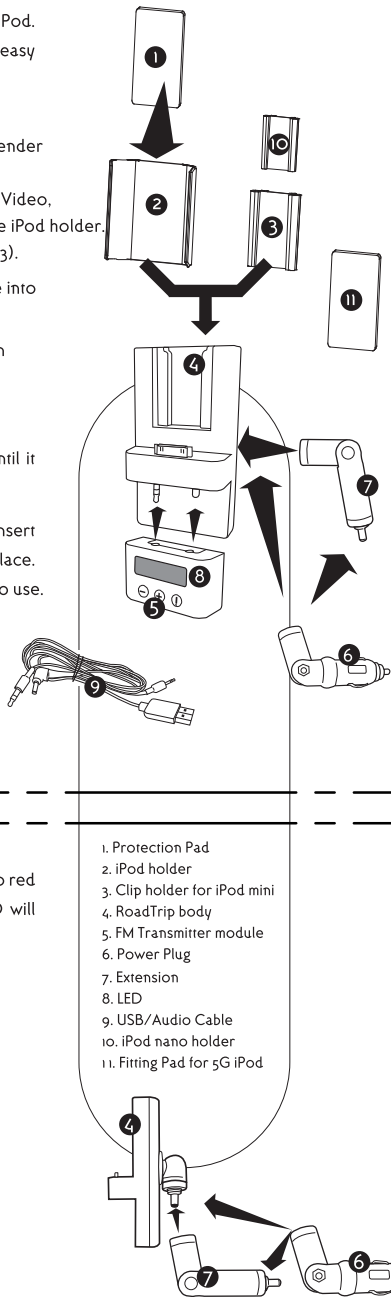
**iPod nano** - attach the nano clip to your iPod nano. Next, slide the nano clip in to the RoadTrip body (4).

POWERPLUG INSTALLATION (4, 6, 7)

1. Insert the power plug (6) into the RoadTrip body and gently twist clockwise until it clicks into place.
2. For cases where there are clearance problems, use the included extension (7). Insert the extension into the RoadTrip (4), gently twisting clockwise until it clicks into place. Then connect the power plug (6) to the extension. Your RoadTrip is now ready to use.

USING THE ASSEMBLED CHARGER

1. Plug the assembled unit into your vehicle's cigarette lighter/power outlet. The LED (8) will show green to indicate connection to power.



- 1. Protection Pad
- 2. iPod holder
- 3. Clip holder for iPod mini
- 4. RoadTrip body
- 5. FM Transmitter module
- 6. Power Plug
- 7. Extension
- 8. LED
- 9. USB/Audio Cable
- 10. iPod nano holder
- 11. Fitting Pad for 5G iPod

USING THE DIGITAL FM TRANSMITTER (first time use)

1. First, connect the FM Transmitter to the RoadTrip (4). Press the Quick Key (c) on the FM Transmitter (5). The display will show the letters OK for 3-5 seconds.
2. The display will then show the pre-set radio frequency. From now on, the display will show the last used frequency when you connect it to power.
3. Insert your iPod into the RoadTrip (see Preparing the iPod).
4. Turn on your radio, reduce the volume to 10-20%, and tune the radio to a frequency that's not being used. The ideal frequency will have nothing but static – no music or talk – and it's even better if the surrounding frequencies are unused also.
5. Adjust the Transmitter to the same frequency you selected on your radio. When the Transmitter and the radio are set to the same frequency, the radio will mute and you won't hear static.

TUNING

- To increase or decrease channels quickly, press the Quick Key and either Frequency key. Holding down either Frequency key slightly longer will change the frequency faster.

- Play a song on your iPod, and adjust the radio's volume. The Transmitter will memorize the last frequency used, and will be set to that frequency when you connect again.
- To turn off the FM Transmitter Press and hold the Quick Key for 2-3 seconds. The display will show four dashes and then power off.
- Though the FM Transmitter does not draw much power, it should be turned off when not in use.

USING ROADTRIP AS A DESKTOP FM TRANSMITTER

RoadTrip can be used as a standalone transmitter for any desktop or laptop computer. Use it to send music from your laptop to your home stereo or even wireless FM headphones.

- To use the RoadTrip with your computer simply disconnect the FM Transmitter module (5) from the RoadTrip body (4). Connect the USB/Audio cable (9) to the module and then to the USB port and headphone jack on your computer. You can then tune the RoadTrip to broadcast to any empty FM frequency on your stereo - just as you would in the car.

TROUBLESHOOTING

If your RoadTrip stops functioning:

- Check to see if the fuse in the power plug is broken. If it is, simply replace the fuse. They can be found at your local electronics store.
- If the fuse is good, check the power source.

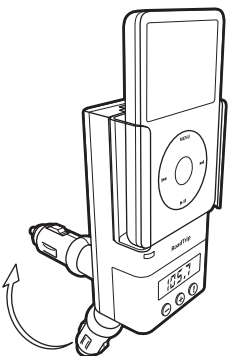
TECHNICAL SPECIFICATIONS

- Charges the iPod
- Compatible with all iPods with Dock Connector
- Compatible with 3rd generation iPod and iPod mini
- Extension Power Plug available for easy reach in any car
- LCD Digital Display on FM Transmitter
- Input Voltage: DC+12V ~ +16V
- Current: 2A (max)
- Output RF range: 88.1 MHz ~ 107.9 MHz
- Radio Frequency Adjustment: 0.1MHz / per step
- Radio Frequency Response: 50 Hz ~ 15 KHz

For more information to help you get the most out of your RoadTrip, please visit Griffin online support at <http://www.griffintechnology.com/support>.

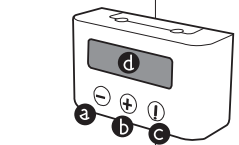
RoadTrip

COMPLETE AUTO SOLUTION FOR IPOD

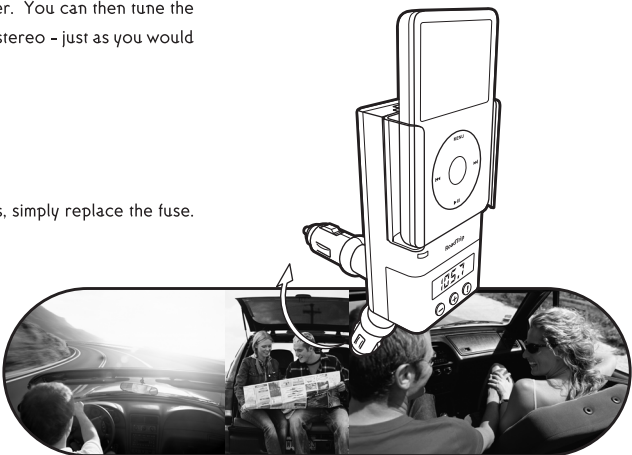


GRIFFIN

©2005 Griffin Technology - [www.griffintechnology.com](http://www.griffintechnology.com) - Patent Pending - Designed in Tennessee - Made in Taiwan  
RoadTrip is a trademark of Griffin Technology, Inc. - iPod is a trademark of Apple Computer, Inc.  
This product contains materials of or from U.S. MILITARY



FM Digital Transmitter  
a. Frequency Down  
b. Frequency Up  
c. Quick Key  
d. Display



12/21/05  
145pm

## FCC Caution

1. The device complies with Part 15 of the FCC rules. Operation is subject to the following two conditions:
  - (1) This device may not cause harmful interference.
  - (2) This device must accept any interference received, including interference that may cause undesired operation.
2. **Changes or modifications to this unit not expressly approved by the party responsible for compliance could void the user authority to operate the equipment.**