

QuickStart Guide

FortiExtender Rugged 511G

FER-511G

The Essentials

Secure your Network

Register at <https://support.fortinet.com> for the latest threat protection updates

Default Logins



<https://192.168.200.99>
Username: **admin**
Password: **leave blank**



<https://fortiedge.forticloud.com>
Username: **user-defined**
Password: **user-defined**

Fortinet Documents Library

For getting started documentation admin guides, up-to-date hardware manuals and reference resources, visit <https://docs.fortinet.com/>

FortiEdge Cloud

Experience simplified cloud deployment, zero-touch provisioning, centralized management, and automated reporting at <https://fortiedge.forticloud.com>

FortiSASE ThinEdge

Secure thin edge locations with enterprise-grade protection using FortiExtender as a FortiSASE LAN extension in micro-branch deployments. For details, visit <https://www.fortinet.com/products/sase>

Package Contents

FortiExtender Rugged 511G

FER-511G



QuickStart Guide



FortiExtender
Rugged Device



2x SIM Card
Adapters



4x Wall Mount Screws,
4x Wall Mount Anchors,
4x Bracket Screws,
1x Grounding Screw



1x Wall Mount
Bracket

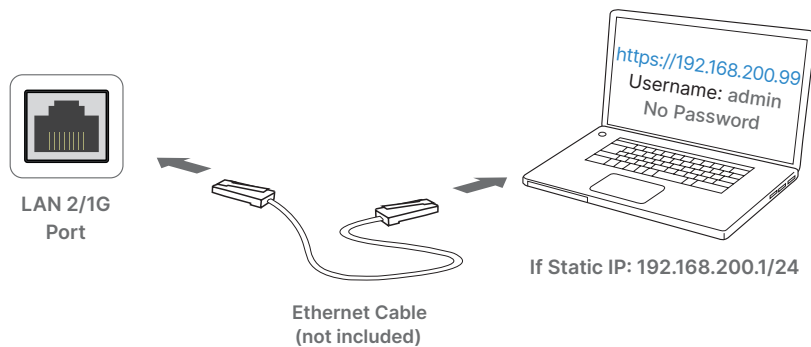


2x Metal Clamps

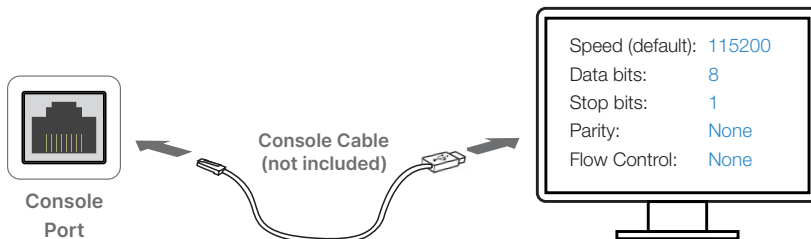
Setup

Power the device on the LAN1/2.5G/POE Port with an 802.3at PoE injector, FortiGate PoE port or a switch PoE Port.

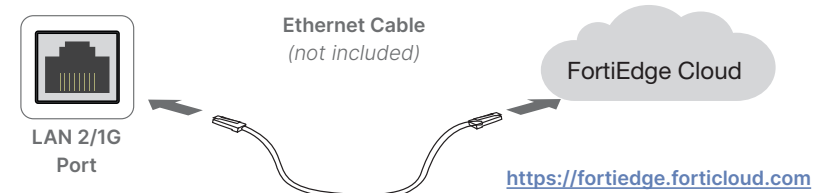
GUI



CLI



FortiEdge Cloud



Note: Once registered and logged to FortiEdge Cloud, your device will automatically appear in **Inventory**.

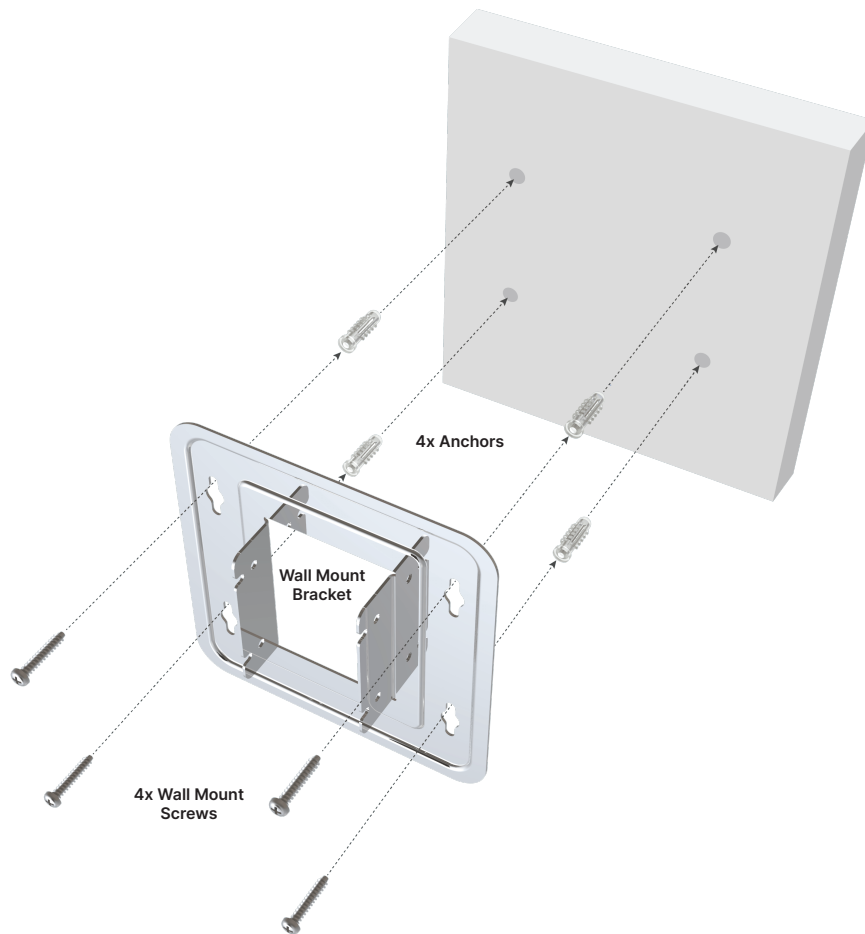
FortiSASE LAN Extension

To configure your FortiExtender as a FortiSASE LAN Extension, refer to the Edge Device and Prerequisites sections in the FortiSASE Admin Guide at <https://docs.fortinet.com/product/fortisase>

Wall Mounting

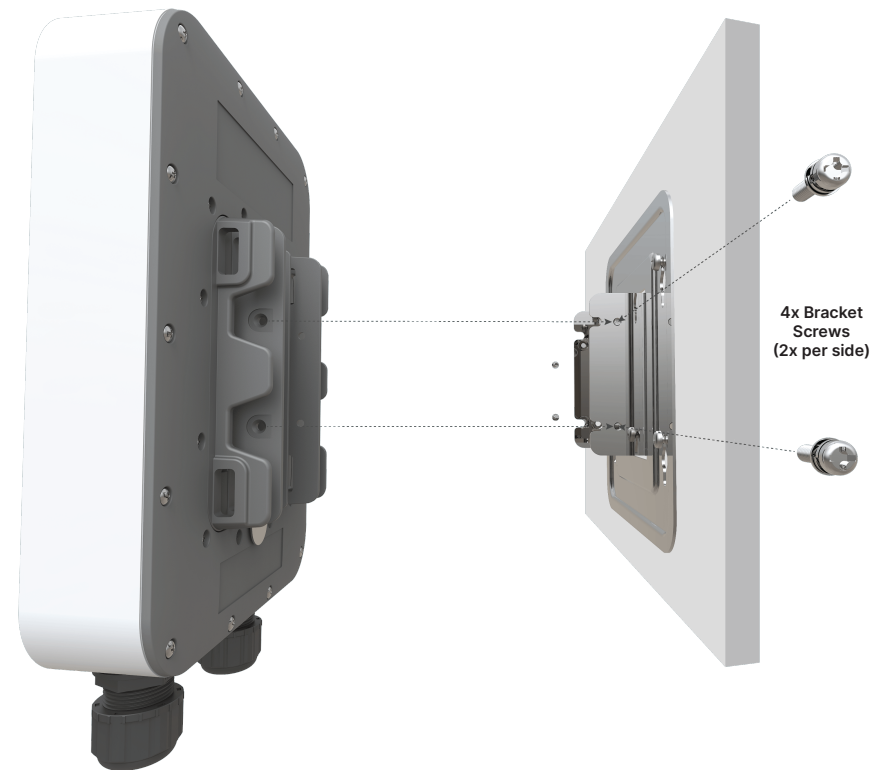
Bracket Installation

Mark the wall using the wall mount bracket holes, then drill holes and insert the anchors. Insert the screws into the anchors, with a ~5mm gap, then slide the device bracket onto the wall mount screws and tighten them.



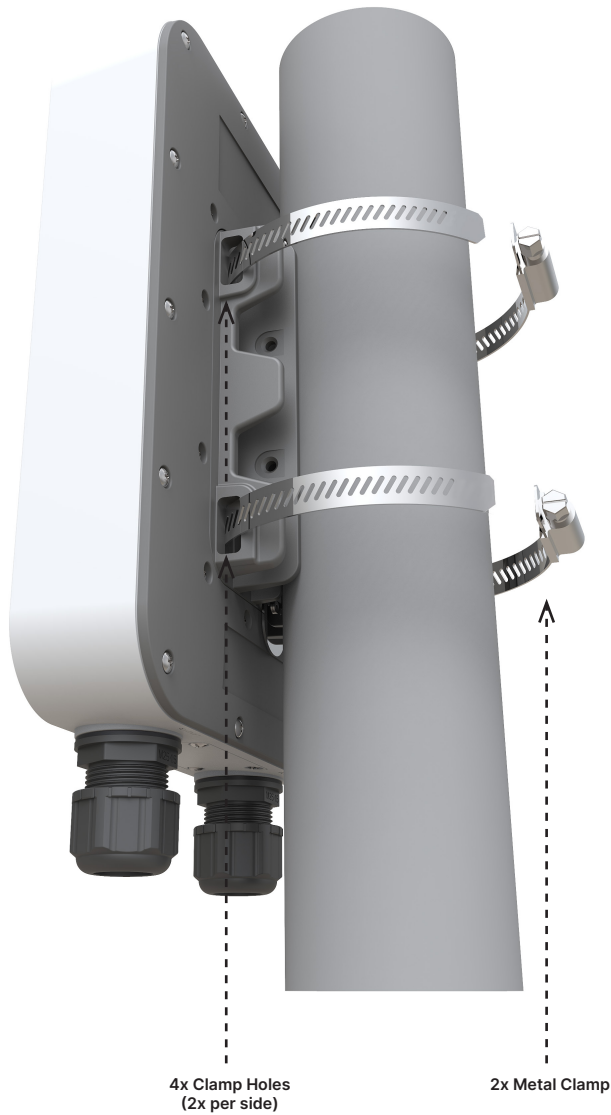
Device Installation

Position the device onto the bracket, making sure the 4 screw holes on the device align with the 4 screw holes on the bracket, then secure the device with the bracket screws.



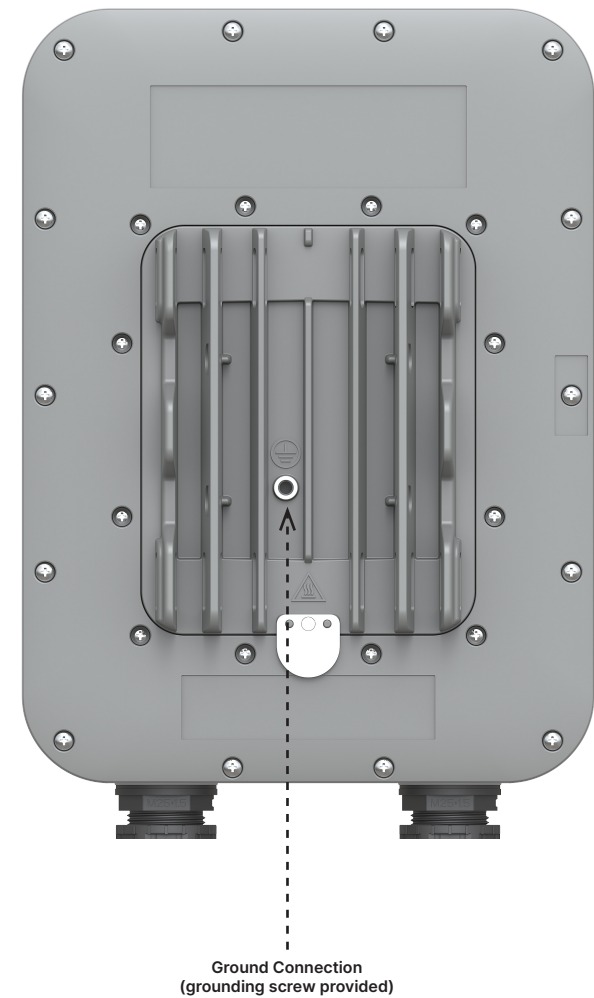
Pole Mounting

Loop the provided metal clamps in the clamp holes, then secure the device around a pole.



Ground Connection

Consult a professional electrician to determine the appropriate ground connection according to local electrical codes. See page 14 for more info.



Cable Installation

LAN 1 and LAN 2 ports are rated IP67. Follow the diagram below to install the cable connectors.



SIM Installation

SIM type is 3FF - Micro SIM. Industrial SIM cards recommended for extreme temperature environments.

