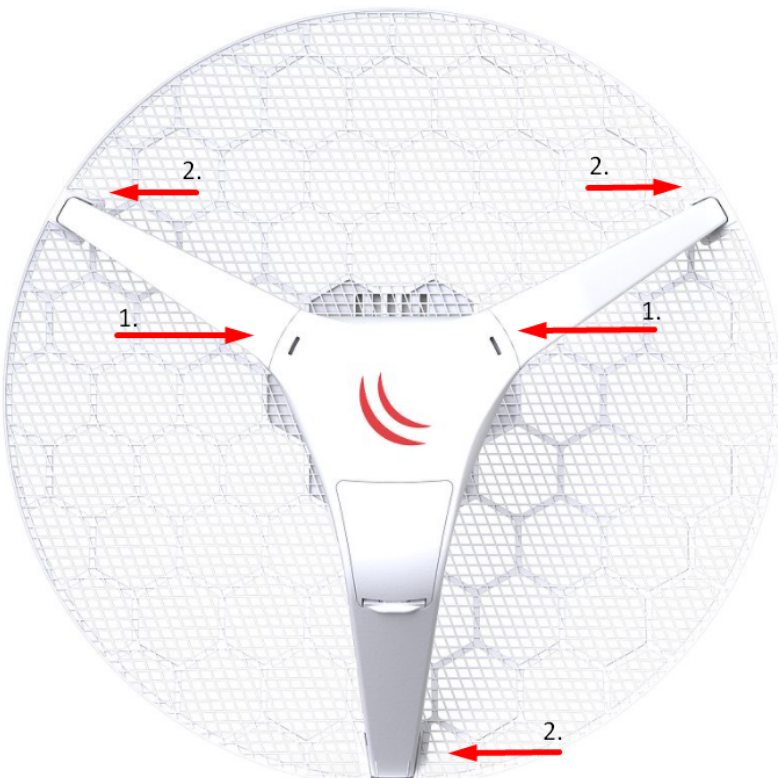


# LHG-5axD-XL (LHG XL 5 ax)

## LHG-5axD (LHG 5 ax)

### Assembly and Mounting

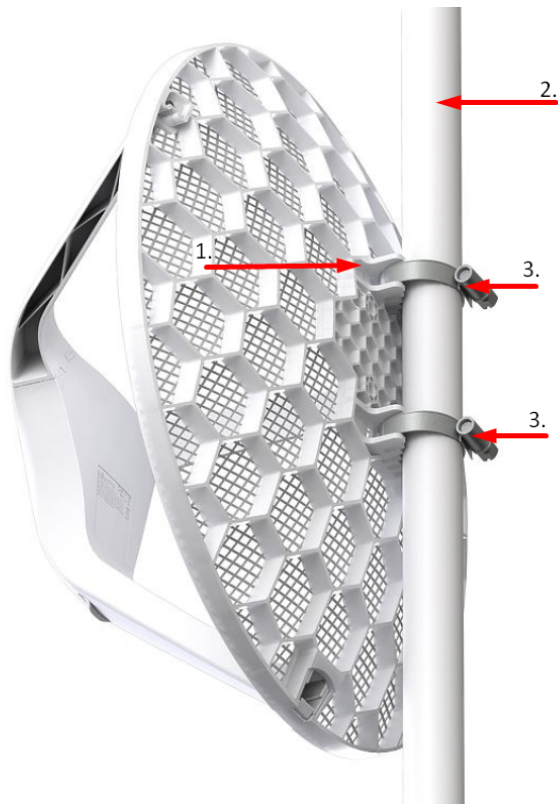
1. Attach the two legs to the LHG case.



2. Snap the assembled LHG unit to the grid in the appropriate locations.
3. Fix the legs in place with two self-thread screws (Use Phillips screwdriver PH2).

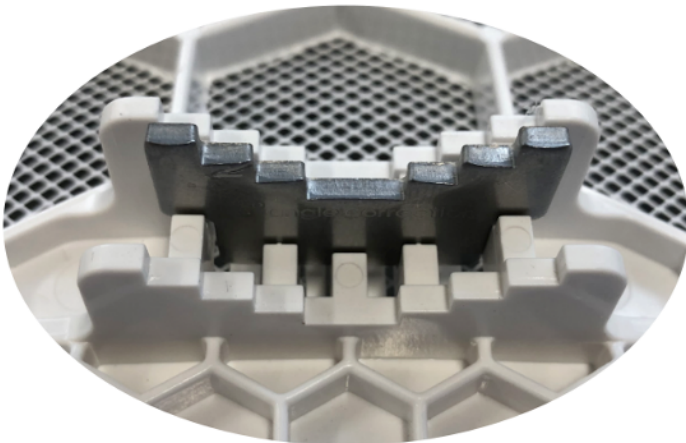


The device is designed to be mounted on the pole using zip ties or steel clamps as shown in the picture. The clamping diameter with provided steel clamps is 35 – 70 mm.



1. Guide provided steel clamps through the unit.
2. Attach the device to the pole.
3. Align and tighten the clamps to secure the device.

Optional: If required, before mounting the unit, you can insert the included 5-degree adjustment adapter into the top or bottom slot where the mounting ring is inserted. This will create an additional upward or downward angle when the unit is tightened to a vertical pole.



The device includes a grounding connection which you should connect to the grounding installation of the tower or building where the device will be used. This is to substantially reduce the risk of ESD and lightning damage.

Warning! This equipment should be installed and operated with a minimum distance of 40 cm between the device and your body. The operation of this equipment in the residential environment could cause radio interference.

Connect the Ethernet cable to the Ethernet port located under the door and guide through the leg as shown in the picture:



Additional mounting brackets can be purchased separately:



LHG mount



solidMOUNT