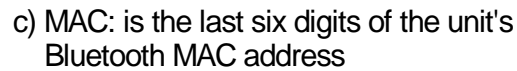
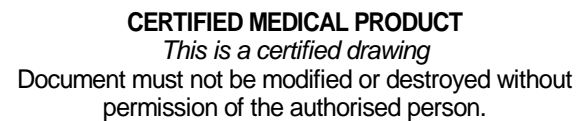
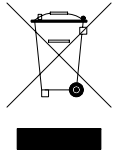


1. CarieScan logo, and certification marks are part of DIL0606 artwork
2. The remaining details uniquely identify the product and are printed onto a separate label which is fixed to the recess in DIL0606. Label material Brady B-8423, printed using Brady Series R-7960
 - a) Serial number and issue and revision (XXXXXXXX-IR) in box.
 - X = serial number (ATC serial number pre-fixed by 000)
 - I = unit's issue
 - R = unit's revision

b) Year (YYYY) and month (MM) of manufacture under factory symbol



d) WEEE symbol
(Waste Electrical and Electronic Equipment)



8			
ISSUE	DATE	MOD	APPD
A	27.7.06	Initial release	
B	21.8.06	Material changed	
C	08.12.06	Removed issue / revision	
D	10.01.07	Added issue / revision	
E	01.02.07	Removed FCC symbol until application has been submitted	
F	23.02.07	Added WEEE & FCC symbols	
G	11.12.07	Added explanation of serial number	
H	6.10.08	Change to Carlsberg Remove FCC logo	

DRAWN	D Coupar	27.7.06	MATERIAL			SKF CMC (Livingston) Ltd © 2008		SCALE 1:1 UNLESS OTHERWISE STATED 2:1		TITLE CDD Label Specification				A		
CHECKED																
ENGINEER			FINISH			TOLERANCES UNLESS OTHERWISE STATED : 0.0 ± LINEAR 0.00 ± ANGLE ±		DIMENSIONS IN MM		DRAWING NUMBER 080-46001		A4	SHEET 1 OF 1			
APPROVAL																
1			2		3		4		5		6		7		8	

