



EZAV
DIGITAL INNOVATION

www.ez-av.com

EZAV
DIGITAL INNOVATION

www.ez-av.com



User's Manual

- Be sure to read this user manual before using the recorder.
- Keep this manual in good custody as it may be useful later.

Content

I Preparation I

1. Basic Component List 1
2. Product Features 2
3. Name of each part 3
4. Menu Structure 4

I Using Foundation I

1. Connecting to the computer 5
2. Playing music file 8
3. Listening to FM 9
4. Recording Voice 10
5. Recording from external device 10
6. Playlist Function 11
7. Resume Function In Second 11
8. Time Step Function 11
9. SLEEP Function 11
10. Play Speed Control Function 12
11. Temporary Pause Function for Recording 12
12. Message INTRO Function 12

I Using Menu I

1. PLAY 12
2. DISPLAY 13
3. RECORD 13
4. SET 14

5. FORMAT 15
6. STOP-WATCH 16
7. INFORM 16
8. Selecting EQ(equalizer) 15
9. Upgrade 15
10. Charging the Battery 15

I Using Movie Friend I

1. Installing Movie Friend 16

I Customer Service I

1. Specifications 19
2. Warranty 20
3. Notice 21

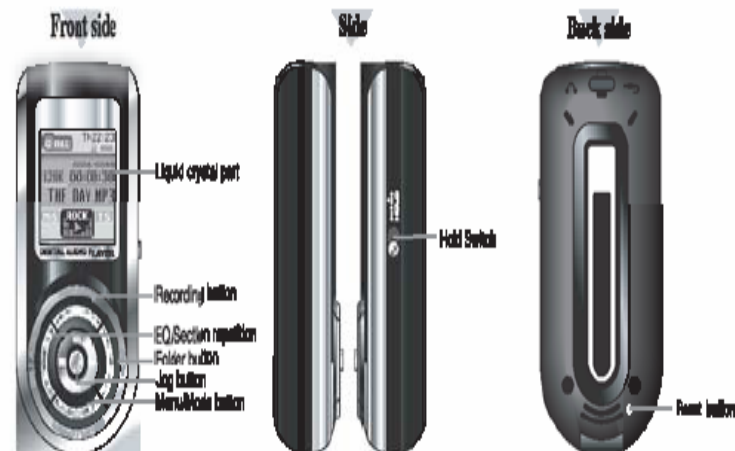
Basic Component List

Main Frame, User Manual, Music Friend CD,
USB Cable, LINE-IN Cable, Earphone,
Necklace, Arm Band, Carrying Case

Product Features

- ▶ Apply the WMDRM10(JANUS)
- ▶ Various Files Generating Function (MPEG1/2 /2.5/3 LAYER3, WMA, OGG)
 - WMA
 - Sampling rate : 8K~48KHz
 - Bitrate : 5K~384KBPS
 - Channel : Mono/Stereo
 - OGG : Q1~Q10
- ▶ 96X96 dot, 65Kcolor(Full Color) OLED Use
- ▶ USB 2.0 Supported
- ▶ Generating Multimedia Function
- ▶ NORMAL, ROCK, JAZZ, CLASSIC, POP, 3D, DBB, USER1,USER2 EQ Supported
- ▶ FM Radio and Recording Function
- ▶ Recording Voice and External Device Function
- ▶ Visual Display Function
- ▶ Message INTRO Function
- ▶ Section Repeating Play Function
- ▶ Repeating (File, Folder, Shuffle, All) Play Function
- ▶ Media Sync Function
- ▶ Firmware Upgrade Function
- ▶ Portable Storage Device
- ▶ OGG Vorbis File Supported
- ▶ Infinite Folder Function
- ▶ TIME STEP Function
- ▶ JPG image display function
- ▶ PLAY LIST Function
- ▶ Sleeping Function
- ▶ Resume Function in seconds
- ▶ Play Speed Control Function
- ▶ Temporary Pause Function for Recording
- ▶ STOP WATCH Function

Name of each part



* Jog button : Play/Pause, FF, REM, Volume Up/Down



Liquid crystal part



Menu Structure

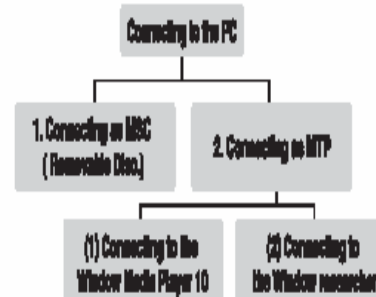
MENU

PLAY	DISPLAY	RECORD	SET	FORMAT	S-WATCH	INFORM
REPEAT	CONTRAST	MIC	POWER	No		VERSION
-NORMAL	OLED_OFF	-BITRATE	SLEEP	Yes		MEMORY
-REP_TRACK	SCROLL	-VOR	FADE			DATE
-REP_ALL	-SLOW	LINE	USB			
-SHU	-NORMAL	-BITRAT	DEFAULT			
-SHU_REP	-FAST	-SYNC				
-INTRO	M-SYNC	-S-TIME				
RESUME	LANGUAGE	RADIO				
-ON						
-OFF						
TIME STP						
PLAY SPD						
EQUALIZE						
USER EQ						
-USER1						
-USER1						

Basic Control Menu

1. Turn on the JOG Switch.
2. Press Menu/Mode button.
3. Select the wanted item by pushing JOG switch to the left/right.
4. Enter to the sub-item by pressing JOG switch.
(Pressing Menu/Mode goes to the previous menu, Long pressing escapes the menu mode)
5. Finish the setting by pushing JOG switch to the left/right.

Connecting to the computer



1. Connecting as MSC

- 1) Win98 and Win200 will connected to MSC (Removable Disc) mode automatically.
- 2) Select the general menu on menu → select USB classic menu- select MSC mode, and connect the USB cable. Then it will connected to MSC(Removable Disc)

※ Win98 user should execute the No. 2) in advance of No.1), and install the Win98 driver. (Include in installation CD)

※ Disconnecting the player during the data transferring will might cause fatal error.
After transferring, disconnecting the player by clicking the icon of "safely remove hardware" on the right bottom of the monitor and stopping the device in case of using Windows2000/XP.

Connecting to Computer(Continued)

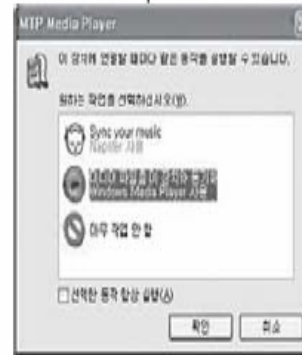
2. Connecting as MTP

- The condition to connecting as MTP:
- Select the general menu on menu → select USB classic menu → select MTP menu.
- Windows service pack1.0 or more should be installed.
- Windows media player 10 or more should be installed.
- Window Media Player 9.0 user should be upgrade to Windows Media 10, and then connecting to the computer.



(1) Connecting to the Windows Media Player 10

- Connect the player to the USB terminal of the computer.
 - Click the icon of "Sync the Media file to this device"
- Windows XP, Window Media Player 10 should be installed in computer to connect as MTP.



Connecting to Computer(Continued)

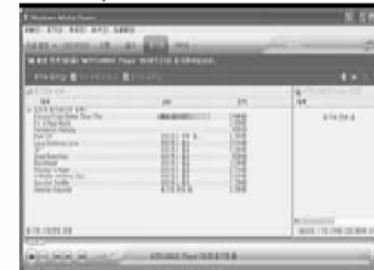
- Select the Sync. Method



- Select the Sync. List



- Click the Sync. Start icon



(2) Connecting as Window Explorer.

1. Connect the player to the USB terminal of the computer.
2. Click the "Non Working" icon
Windows XP, Window Media Player 10 should be installed in computer to connect as MTP.



3. Execute the Window Explorer.

4. Click the "Net Music MTP/JANUS Player"



Connecting to Computer(Continued)

5. Music file should be copied to media folder (non support file will not be copied)
6. Other data and firmware upgrade can be copied.



Playing music file, and Navigation function

1. Power On

- 1) Press Jog button will turn on power.

2. Play/Stop

- 1) Pressing Jog button will play the music.
(Repressing Jog button will stop player)
- 2) Power will automatically be off with no use
(Refer to the setting P14. Power Off time)

3. Power Off

- 1) Pressing Jog button will power off
(Automatically power off after setting time is
passed on stop mode)

4. Selecting song and searching

- 1) Move JOG button(◀◀▶▶) to left/right, then shift to the previous song/next song.
- Moving the button to ◀◀ before 5 seconds after play will shift to the previous song, moving it after 5 seconds will shift to the beginning of the present song.

5. Adjusting the Volume

- 1) Adjust the volume by moving the JOG button to up and down.

6. Section Repetition

- 1) During the Play, pressing E/Q button will set the begin of section repetition.
 - Press again will set the end of section repeating and will repeat the play within the section.
- 2) During the repetition, Pressing E/Q button will clear the section repetition.
(Lock setting cannot use the operating button.)

7. Using the Navigation

- ### 1) Library function

Play All : Play the all music in library

Artists : Showing the music by Artist

Albums : Showing the music by Albums.

Tracks : Showing the all music.

Favorites : Collect the favorite music

New Music: Marking the newly downloaded music.

Genres : Showing the music by genre.

Years : Showing the music by year.

Playlists : Showing the M3U file.

Pictures : Showing the jpg file.

Video : Showing the avi file.

Folder : Make a folder like a Removable Disc (available Copy function)

- 2) Using Favorites function :Transferring the selected file from library other than Folder to Favorites.
 - Select the file by folder button and Jog button → pressing menu button of Favorites menu → Select the "Yes" by Jog button and pressing Play button.
- 3) Using Copy function : Transferring the selected file from folder library to selected folder.

- Select the file by folder button and Jog button → pressing menu button of Copy menu → Select the "Yes" by Jog button and pressing Play button.

Listing to FM Radio/Recording Fm Radio

- Select the FM mode by pressing **MENU** /MODE long.

1. Tuning the Radio manually

- 1) Move the JOG button to left/right and search the radio frequency.(No PRESET number is the status of manual)

2. Tuning the Radio automatically

- 1) Pressing JOG button will display the PRESET number and search the number by moving the button to left/right.

3. PRESET the tuned frequency manually

- 1) Select the frequency then press the MENU/MODE button shortly.
- 2) Using the JOG button, select **FREQ SAVE** then press JOG button.
- 3) Select the PRESET number by moving JOG button left/right then press the button.

Listening to FM Radio/Recording Fm Radio

4. PRESET the tuned frequency automatically

- 1) Press the MENU/MODE button shortly.
- 2) Using the JOG button, select AUTO then press JOG button.
- This will store the number 1~20 by searching FM radio automatically.

5. Controlling the MONO/STEREO

- 1) Press the MENU/MODE button shortly.
- 2) Select SOUND by moving the JOG button, then press JOG button.
- 3) Select the MONO or STEREO.

6. Recording FM Radio

- 1) Press the REC button will record the FM radio during the listening to FM.
- Recorded file will be created under the RADIO folder.
- 2) Pressing STOP button will stop recording and repressing the button will record in a new file.

Recording Voice

- 1) Pressing REC button will start recording.
- Recording file will be created under the VOICE folder.
- 2) Pressing STOP button will stop recording and repressing the button will record in a new file.
 1. Pressing REC button will start recording.
 2. Pressing JOG switch in right angle will stop the recording temporarily and pressing the switch in right angle will record the file continuously.
 3. Pressing REC button will stop recording.
※ Please record by the built-in microphone forward the source of sound.

Recording from external device

- 1) Connect Line-in cable between external device and LINE IN terminal of player.
- 2) Record from the external device after Playing and pressing REC button.
- Recording file will be created under the LINE IN folder.

Playlist Function

- 1) Play function selects the wanted music file and makes the Play List, then plays the music
 1. Connect the player to PC.
 2. Run WINAMP PLAYER in PC.
 3. Put wanted music file in WINAMP from the player, then create Play List files.(Extended file name: M3U)
 4. Select M3U file in the folder.
※ Warning : In case of making List, should select the music file in the player.
The M3U file and selected file should be located on same folder.
(The M3U file stored on hard disk driver can be operated normally.
The OS language and hard disk language should be coincidence.)

Resume Function in seconds

- ▶ In case of Power Off on pause mode, this function powers on again and plays the paused file.
1. Move to [MENU] - [PLAY] - [RESUME], and select "ON/OFF".

Time Step Function

- ▶ This can shift rapidly during the play when user wants to skip or return to the front part.
1. Select [PLAY] - [TIME STP].
 2. Set the shifting time by pushing the JOG button to left and right.
 3. While playing, pushing JOG button to FF or REW will shift to the front or back rapidly with a set-up time.

JPG file Selection function

1. Press "Folder" Button
2. Move to JPG file and select the file what you want to see.
3. Press Folder button to return to previous menu.

SLEEP Function

- ▶ (On bedtime)Automatically powers off after a set-up time.
1. Move to [MENU] - [SET] - [SLEEP].
 2. This can select Sleeping Time by pushing JOG button to left and right.

Play Speed Control Function

- ▶ This can control the speed slowly or fast for the part hardly heard of.
- 1. Move to [MENU] - [PLAY] - [PLAY SPD].
- 2. This can be controlled by pushing JOG button to left and right based on Normal(100%).

Temporary Pause Function for Recording

- ▶ This temporarily pauses the recording by PLAY button during the record and records by pressing PLAY button again.

Message INTRO Function

- ▶ Plays the beginning 10 seconds of each track with searching.
- 1. Press [MENU] - [PLAY] - [REPEAT] - [INTRO] - JOG key.
- Press [MENU] - [PLAY] - [REPEAT] - [NORMAL] - JOG key for clearing.

◆ USING MENU ◆

PLAY MENU

- ▶ REPEAT, RESUME, TIME STP, PLAY SPD and EQUALIZER can be selected by pushing JOG button to left and right.

1. REPEAT

- Can select OFF(NORMAL), REP_ONE(One track repeat), REP_FOL (Folder repeat), REP_ALL(All random repeat), SHU_FOL (Folder random repeat), SHU_REPL (Random repeat) and INTRO (rapid search).

2. RESUME

- 1) ON : Playback resumes from the location where the player is stopped temporarily.
- 2) OFF : Playback begins from the first track after the player is stopped temporarily.

3. TIME STP

- 1) This can shift rapidly during the play when user wants to skip or return to the front part.
- 2) Can set up the time as user wishes.

4. PLAY SPD

- Can control the speed slowly or fast for the part hardly heard of.

PLAY MENU

5. EQUALIZER

- 1) 3D
 - Can set up depth of 3D effect.
- 2) USER EQ
 - Users can control CUSTOM1, CUSTOM2 as they wish.

DISPLAY MENU

- ▶ Can select CONTRAST, OLED-OFF, SCROLL, LR LEVEL, M-SYNC and LANGUAGE by pushing JOG button to left and right.

1. CONTRAST

- Can control the brightness of LCD by pushing JOG button to left and right.

2. OLED-OFF

- Can set up the power off time for LCD by pushing JOG button to left and right.

3. SCROLL

- Can adjust the scroll speed of text to SLOW, NORMAL and FAST while playing the file by pushing JOG button to left and right.

4. M-SYNC

- Can visualize the text while playing.(file only has the text)

5. LANGUAGE

- Can select the menu language.

RECORD MENU

- ▶ Can select MIC, LINE and RADIO by pushing JOG button to left and right.

1. MIC

- 1) Beat rate
 - High beat rate can generate high quality sound file.
 - After selecting beat rate by pushing JOG button to left/right, setup the beat rate by JOG button.

2) VOR

- Records only for the existence of sound and stops the recording in case of no sound
- OFF : no setup for VOR record
- NORMAL : setup the middle LEVEL
- HIGH : setup the high LEVEL
- ※ Warning : Recording process time and actual recording time may be different by the environment when VOR function is selected.

3) AGC

- Record the far-off sound in normal condition by adjusting recording level automatically
- ON : Select for AGC record
- OFF : Select for no AGC record

2. LINE

- 1) Beat rate
 - High beat rate can generate high quality sound file.
 - After selecting beat rate by pushing JOG button to left and right, setup the beat rate by JOG button.

RECORD MENU

2) SYNC

-while recording CD, this function senses the non-sound between songs and creates file per song

- SYNC OFF : Clearing Non-sound sensor function between songs
- SYNC ON : Senses the non-sound between entire CD songs and creates file per song
- SYNC 1 : Senses the non-sound between songs and creates one file

3) Non-sound time

-time decides the non-sound interval between songs while recording CD

- After selecting non-sound time(1~5 seconds) by pushing JOG button to left and right, setup the time by JOG button

3. RADIO

-High beat rate can generate high quality sound file.

- After selecting beat rate by pushing JOG button to left and right, setup the beat rate by JOG button.

SET

- ▶ Can select POWER OFF, SLEEP, FADE ON/OFF, USB CLASSIC and DEFAULT SET by pushing JOG button to left and right.

1. POWER OFF

1) Automatically powers off after the setup time on the pause mode

2) [MENU] - [SET] - [POWER OFF] - select by pushing JOG button to left and right.

2. SLEEP

1) Automatically powers off after the setup time for sleep while listening to the music.

2) [MENU] - [SET] - [SLEEP] - select by pushing JOG button to left and right.

3. FADE ON/OFF

1) Gradual key tone sound function preventing the noise while playing the first file

2) [MENU] - [SET] - [FADE ON/OFF] - Select ON then press JOG key.

4. USB CLASSIC

1) Gradual key tone sound function preventing the noise while playing the first file

2) [MENU] - [SET]

5. DEFAULT SET

1) Set up default for the initial value of the player.

2) [MENU] - [SET] - [DEFAULT SET] - Select YES/NO then press JOG key.

FORMAT

- ▶ Format function for stored data

-[MENU] - [FORMAT] - Select YES then press the JOG button.

※ Warning! Notice that data cannot be restored after formatting.

STOP-WATCH

- ▶ Can use STOP-WATCH.

1) [MENU] - [S-WATCH] - Select YES then press JOG key.

2) Pressing JOG key will start, repressing JOG key will stop and pushing JOG key to right will initialize the STOP-WATCH.

INFORM

- ▶ Can display VERSION, MEMORY and DATE of the player.

1) [MENU] - [INFORM] - see the INFORM by pushing JOG key to left and right.

Selecting EQ(equalizer)

- ▶ Press EQ button slightly in pause mode, and press and hold the EQ button in play mode.

1) Select NORMAL, ROCK, JAZZ, CLASSIC, POP,3D, DBB, USER1 and USER2 EQ by pushing JOG key to left and right.

Upgrade

- ▶ Can upgrade by upgrade file.

1) Download the upgrade file from the Homepage, then copy it to the root directory of EMP-600.

2) POWER OFF the player and, POWER ON it again.

Installing Music Friend

1. Installation screen appears after inserting : Music Friend: Installation CD into CD-Rom driver.
2. select the program to install.
3. Windows 98/Me user are to connect the digital audio player with PC, Windows 98/ME Driver should be installed in advance.
* MOVIE FRIEND-T is available in only Windows 2000, and XP.



Uninstalling the MovieFriend

* Method 1)

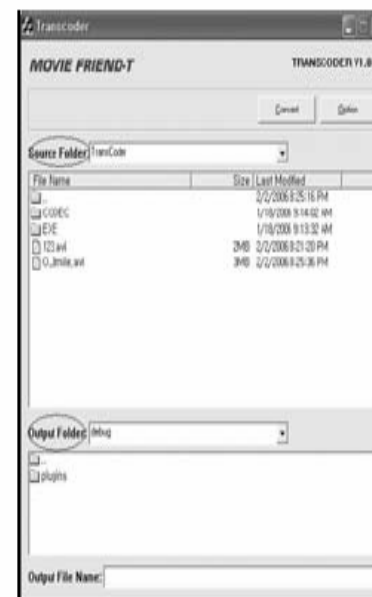
Start → setting → Control → add/remove program
→ MovieFriend-T Ver 1.00 → select Add/remove
program for deleting.

* Method 2)

Start → Program → Music Friend 5.0
MovieFriend-T → select Uninstall → MovieFriend-
Y 1.0 for deleting

Using the Multimedia (Avavilable In Windows 2000, XP)

1. Execute the TCCoder.exe.
2. Select Source folder and Output folder.
3. Select the file which will be converting.
4. Select the option, and adjust the option. The size of Resize's width and height set as 96. The size of Expand's width and height set as 96.



If the value set as different one, the player will not works properly.

Using the Multimedia (Available in Windows 2000, XP)

5. If the setting is done, click the "OK" button.
(Converting will be started)

6. Covering will be started when the option setting is done or pressing the Convert button.

If the converting is finished, the initial screen will be displayed and converted avi file be generated.



Customer Service

Specifications

Category	Item	Specifications
AUDIO	File Support	MPEG 1/2/2.5/3 Layer3, WMA, OGG
	Channel	Stereo
	Frequency Range	20Hz ~ 20KHz
	Earphone Output	20mW(L)+20mW(R):16Ω, Maximum Volume
	S/N Ratio	Over 90dB (With 20KHz LPF)
FM RADIO	Frequency Range	87.5MHz ~ 108MHz(Korea/USA/Europe), 76MHz ~ 108MHz(Japan)
	Earphone Output	20mW(L)+20mW(R):16Ω, Maximum Volume
	S/N Ratio	Over 55dB (With 20KHz LPF)
	Receiver Type	Earphone Cord Antenna
Record	Voice recording time	256MB Up to 36hours(16Kbps)
		512MB Up to 72hours(16Kbps)
	Sound Quality	Recording Voice Sampling Freq : 16KHz/22.05KHz/32KHz/44.1KHz Bit Rate : 16,24,32,40/48,56,64,80,96/112/128,160,192Kbps
		External connection recording Sampling Freq : 16KHz/22.05KHz/32KHz/44.1KHz Bit Rate : 16,24,32,40/48,56,64,80,96/112/128,160,192Kbps
		FM Radio Sampling Freq : 16KHz/22.05KHz/32KHz/44.1KHz Bit Rate : 16,24,32,40/48,56,64,80,96/112/128,160,192Kbps
	Format	Decode Format MP3, WMA, OGG Encode Format MP3
PC Interface	System OS	Windows 98/ME/2000/XP/MAC OS(Over 9.0)
Power Supply	Power	Rechargeable Li-polymer Battery
	Playing	Up to 20hours of battery life for playing in earphone
General specification	Size	35×68×16(mm)
	Weights	about 42g(battery excluded)
	Accessories	Earphone, USB connecting cable, Music Friend/CD, Armband User's Manual/Warranty, Neck Strap, External Line-in cable, Carrying Case

Warranty for Product

Services

1. This is the product that has been produced through strict quality control and inspection process.
2. We will provide free of charge service for you in case that there are some problems with the product within the period of warranty while using it in a normal manner.
3. We will provide charged service for you in case that it corresponds to the charged service even if it is within the period of warranty.
4. The said warranty is valid only in this country.
5. The period of gratuitous warranty is six months in case that the said product is used for marketing and sales (marketing activities and abnormal user's environment).
6. Please fill out the designated form within the (warranty for product) and keep it safely.
7. Please feel free to contact where you have purchased your product in case that it does not function well.

Name of product	DIGITAL AUDIO PLAYER
Name of Model	

Date of Purchase		Period of warranty	a year
Place where the product is purchased		Purchasing amount	
Telephone		Won	

Customer	Address		
	Name		
	Telephone		

Charged Services

- Malfunction due to the mishandling while using the product
- Malfunction due to the internal reconstruction by the user at will
- Malfunction due to the natural calamity such as fire, damage from sea wind, flood damage and earthquake

Notice

1. Do not drop or impact the player against the objects. This may result the damage of the player.
2. Keep the device out of the place as following.
 - Place in very high temperature (Over 60°C)
 - Direct sunlight or near to heater
 - Inside car with closing the window (Especially in Summer)
 - Humid area such as bathroom
 - Dusty area
3. Do not use excessive force to LCD.
 - This may result the damage and cause the problem on display part of LCD.
4. Keep the player away from the strong magnets such as cash card, special card and other card using magnets. This will damage the card.
5. Damage from the use of this device and claim for damages from the third party will not be

responsible to the company.

6. Damages from breaking down, repairing and loss of recording message from the other causes will not be responsible to the company.

THIS DEVICE COMPLIES WITH PART 15 OF THE FCC RULES. OPERATION IS SUBJECT TO THE FOLLOWING TWO CONDITIONS: (1) THIS DEVICE MAY NOT CAUSE HARMFUL INTERFERENCE, AND (2) THIS DEVICE MUST ACCEPT ANY INTERFERENCE RECEIVED, INCLUDING INTERFERENCE THAT MAY CAUSE UNDESIRABLE OPERATION.

FCC RF INTERFERENCE STATEMENT

NOTE:

This equipment has been tested and found to comply with the limits for a Class B digital device, pursuant to Part 15 of the FCC Rules. These limits are designed to provide reasonable protection against harmful interference in a residential installation.

This equipment generates, uses and can radiate radio frequency energy and, if not installed and used in accordance with the instructions, may cause harmful interference to radio communications. However, there is no guarantee that interference will not occur in a particular installation.

If this equipment does cause harmful interference to radio or television reception which can be determined by turning the equipment off and on, the user is encouraged to try to correct the interference by one or more of the following measures.

- Reorient or relocate the receiving antenna.
- Increase the separation between the equipment and receiver.
- Connect the equipment into an outlet on a circuit different from that to which the receiver is connected.
- Consult the dealer or an experienced radio, TV technical for help.
- Only shielded interface cable should be used.

Finally, any changes or modifications to the equipment by the user not expressly approved by the grantee or manufacturer could void the users authority to operate such equipment.