



User's Manual

- Be sure to read this user manual before using the player.
- Keep this manual in good custody as it may be useful later.

Content

I Preparation I

1. Basic Component List 1
2. Product Features 2
3. Name of Each Part 3
4. Menu Structure 4

I Using Function I

1. Charge Function 5
2. Connecting to the computer 5
3. Playing music file, deleting file 7
4. Listening to FM Radio/Recording FM Radio 8
5. Voice Recording 9
6. Playlist Function 9
7. Bookmark Function 10
8. Resume Function in seconds 10
9. Time Step Function 10
10. SLEEP Function 11
11. Play Speed Control Function 11
12. Temporary Pause Function for Recording 11
13. File INTRO Function 11
14. HOLD Function 11

I Using Menu I

1. MODE 12
2. SET 12

- 1) PLAY 12
- 2) DISPLAY 13
- 3) RECORD 13
- 4) GENERAL 14
3. FORMAT 14
4. INFORM 15

I Using Music Friend I

1. Installing MusicFriend 16
2. Text editing Function(Possible only in pc) 18
3. Image Edit Function 19
4. Using the Media sync 21

I Customer Service I

1. Specifications 28
2. Warranty 29
3. Notice 30

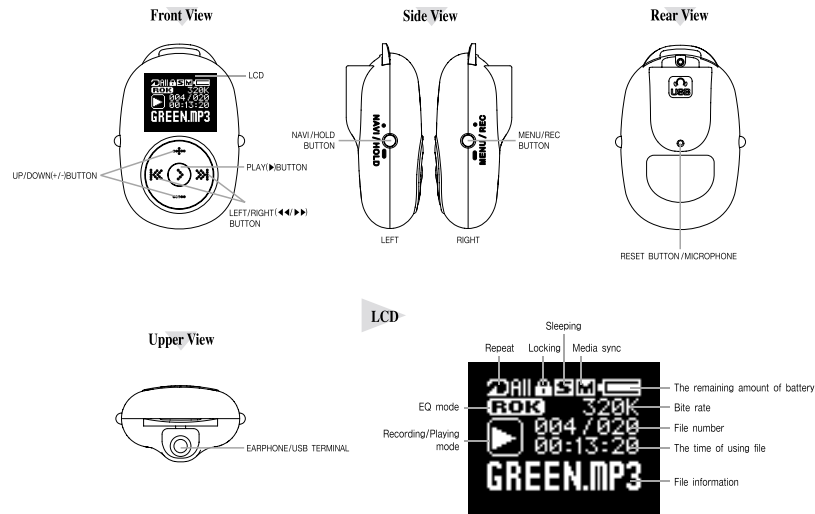
Basic Component List

Set, User's Manual/Warranty, Music Friend CD,
USB Cable, Earphone, Necklace

Product Features

- ▶ Multi-format File Play Function(MPEG1/2 /2.5/3 LAYER3, WMA, ASF)
 - WMA, ASF : 32~192Kbps
- ▶ 64 x 48 dot OLED Adaption
- ▶ USB 2.0 full speed Support
- ▶ NORMAL, ROCK, JAZZ, CLASSIC, POP, DBB, USER1, USER2 EQ Supported
- ▶ FM Radio and Recording Function
- ▶ Voice Recording Function
- ▶ File INTRO Function
- ▶ Section Repeating Play Function
- ▶ Repeating (File, Folder, Shuffle, All) Play Function
- ▶ Media Sync Function
- ▶ Firmware Upgrade Function
- ▶ Portable Storage Device
- ▶ Infinite Folder Function
- ▶ TIME STEP Function
- ▶ PLAY LIST Function
- ▶ BOOK MARK Function
- ▶ LOGO/ICON Editing Function
- ▶ Text Editing Function
- ▶ Sleeping Function
- ▶ Resume Function in seconds
- ▶ Play Speed Control Function
- ▶ Temporary Pause Function for Recording
- ▶ STOP WATCH Function

Name of each part



Menu Structure

1. AUDIO MODE

MODE	SET				FORMAT	INFORM
AUDIO	PLAY		DISPLAY		YES	VERSION
FM					NO	MEMORY
STOP WATCH						
PLAYMODE	NORMAL	TYPE	NORMAL	VOICE	BIT RATE	16K-160K
	PLAYLIST		REMAIN			
	BOOKMARK		ICON			
REPEAT	NORMAL	ID3 TAG	ON/OFF	FM	BIT RATE	32K-192K
	REP_ONE					
	REP_FOLD					
	REP_ALL					
SHU_FOLD	SHU_FOLD	LANGUAGE	ON/OFF	SLEEP	BOOKMARK	ON/OFF
EQ	SHU_ALL	SCROLL	KOREAN	TIME STEP	RESUME	OFF
	INTRO		ENGLISH			
	NORMAL		FRENCH			
	ROCK		GERMAN			
JAZZ	LIVE	CONTRAST	ITALIAN	SLEEP	BOOKMARK	ON/OFF
	CLASSIC		JAPANESE			
	POP		RUSSIAN			
	USER1		SPANISH			
USER2	DBB	SPEED	CHN_TRAD	DEFAULT	YES/NO	
	USER1		CHN_SIMP			
	USER2					
EQ SET	70%-130%	CONTRAST	0-9			

2. FM MODE

MODE	FREQ. SAVE	SET	
AUDIO	MANUAL	BIT RATE	32K-192K
FM	AUTO	OLED_OFF	10/20/30/40/60min/ALWAYS
STOP WATCH		POWER_OFF	1-10min
		SLEEP	OFF
			15/30/60/90/120min
		AREA	KOR/USA
			JAPANESE
SOUND			EUROPE
			MONO
			STEREO

How to Menu Control

1. Turn on the power by pressing PLAY(▶)BUTTON.
2. Press and hold the MENU/REC BUTTON.
3. Select the item using LEFT/RIGHT(◀/▶) BUTTON.
4. Press the PLAY(▶)BUTTON to select detail item.(To go to previous menu, press the MENU/REC BUTTON. To escape the menu, press and hold the MENU/REC BUTTON)
5. Using UP/DOWN(↑/↓)BUTTON, Confirm setting.

Charging

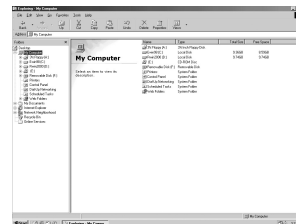
1. Set is charged when it connect with turned PC.
2. "Charging" is displayed and " Charge OK " is displayed when finished.

Connecting to the computer

1. Connecting to the computer.

- 1) Connect the player to the USB terminal of the computer.
- 2) "Removable Disk" will be appeared in My Computer.

※ WINDOWS 2000/XP will generate it without installing additional driver, WINDOWS 98/ME users should install the additional driver to generate "Removable Disk"



- 3) Copy the wanted file and store it in the Removable Disk
- 4) Folders can be created in Removable Disk same as PC.

2. Disconnecting from computer

- 1) Disconnecting the player during file transferring will might cause fatal error.
- 2) **After transferring data, disconnect the player by clicking the icon of "safely remove hardware" on the right bottom of the monitor and stopping the device in case of using Windows2000 /ME/XP.**



Connecting to Computer(Continued)

3. Copy a file to the Removable Disk

- 1) When "Removable Disk" is generated in My Computer, select the file for copying.
- 2) There are three copying methods as following.
 1. Press the right button of mouse and select [Copy]. Press the right button of mouse and [Paste] in the folder of "Removable Disk".
 2. Drag the mouse then drop the dragged file to the folder of "Removable Disk" for copying.
 3. Select the file for copying and press [Ctrl]+[C] of Keyboard. Press [Ctrl]+[V] of Keyboard on the folder of "Removable Disk" for copying.

4. Deleting File/Folder in Removable Disk

- 1) After "Removable Disk" is generated in My Computer, select the file/folder for deleting.
- 2) There are three deleting methods as following.

1. Press the right button of mouse and select [Delete] for deleting file/folder.
2. Drag the mouse then drop the dragged file/folder to of "Recycle Bin".
3. Select the file for deleting then press [Delete] on keyboard deleting file/folder.

5. Creating Folder in Removable Disk

- 1) "Removable Disk" is generated in My Computer.
- 2) Creating folder is as following.
 1. Press the right button of mouse and select [New Folder], then create the folder.

6. Change name of file/folder in Removable Disk

- 1) "Removable Disk" is generated in My Computer.
- 2) Renaming the file/folder is as following.
 1. Press the right button of mouse and select [Rename], then change the name by keyboard.

Playing music file, deleting file

1. Power On

- 1) Pressing PLAY(▶) BUTTON will turn on the power.

2. Play/Stop

- 1) Pressing PLAY(▶) BUTTON will play the music.
- 2) Pressing PLAY(▶) BUTTON again, will be stop

3. Deleting File

- 1) Set the NORMAL mode at play mode option.(Refer page 12)
- 2) Press the NAVI/HOLD BUTTON on stop mode.
- 3) Select the file to delete using UP/DOWN(+/-) BUTTON.
- 4) Press MENU/REC BUTTON.
- 5) Select the "ERASE FILE" using UP/DOWN(+/-) BUTTON and then press the PLAY(▶) BUTTON
- 6) Select the "YES" using UP/DOWN(+/-) BUTTON and then press the PLAY(▶) BUTTON to delete.

4. Power Off

- 1) Press and hold the PLAY(▶) BUTTON on stop mode to turn off the power
- 2) The power automatically turns off when the player is not in use for the set time of power off

in stop mode.

5. Song Selecting and Searching

- 1) Pressing LEFT/RIGHT(◀/▶) BUTTON will move to the previous song/next song.
 - Pressing LEFT(◀) BUTTON before 5 seconds after play will play to the previous song, pressing it after 5 seconds will play to the beginning of the present song.

6. Adjusting the Volume

- 1) Adjust the volume using the UP/DOWN(+/-) BUTTON.

7. Section Repeat

- 1) [MENU]-[SET]-[GENERAL]-[BOOKMARK]-Set "OFF" by UP/DOWN(+/-)BUTTON. (Refer page 14)
- 2) During the Play, pressing MENU/REC button will set the start of section repetition And "A>" will blink on LCD.
 - Press again will set the end of section repeating and will repeat the play within the section.
- 3) During the repetition, Pressing MENU/REC button will clear the section repetition.

Listening FM Radio/Recording FM Radio

1. Go to FM Mode

- 1) Press and hold the MENU/REC BUTTON to move on MODE, and then press PLAY(▶) BUTTON.
- 2) Select the FM using LEFT/RIGHT(◀/▶) BUTTON, and then press PLAY(▶) BUTTON.

2. Tuning the Radio manually

- 1) Move the LEFT/RIGHT(◀/▶) BUTTON to left/right and search the radio frequency.(No PRESET number is the status of manual)
- 2) If you briefly press the LEFT/RIGHT(◀/▶) BUTTON, frequency is increased/decreased by 0.1MHz or 0.05MHz and you can search for FM station of your choice.
If you long press, automatically increased/decreased while searching for FM station.

3. Searching the frequency which was stored

- 1) Pressing PLAY(▶) BUTTON will display the PRESET number.
- 2) Select the PRESET number using LEFT/RIGHT(◀/▶) BUTTON.
- 3) At every press of the PLAY(▶) BUTTON, scan mode or memory mode is alternatively changed.

4. PRESET the tuned frequency manually

- 1) Press and hold the MENU/REC BUTTON on FM mode.

- 2) Using the LEFT/RIGHT(◀/▶) BUTTON, select FREQ. SAVE, and then press PLAY(▶) BUTTON.
- 3) Select the MANUAL using LEFT/RIGHT(◀/▶) BUTTON, and then Press PLAY(▶) BUTTON.
- 4) Select the PRESET number using UP/DOWN(+/-) BUTTON, and then press PLAY(▶) BUTTON.
- 5) Maximum number can be stored is 20.

5. Automatically memorized the turned frequency

- 1) Press and hold the MENU/REC BUTTON on FM mode.
- 2) Select the FREQ.SAVE mode using LEFT/RIGHT(◀/▶) BUTTON, and then press PLAY BUTTON
- 3) Select the AUTO using LEFT/LIGHT(◀/▶) BUTTON, then press PLAY(▶) BUTTON.
- 4) Maximum number can be stored is 20

6. Selecting the MONO/STEREO

- 1) Press and hold the MENU/REC BUTTON on FM mode.
- 2) Select the SET using the LEFT/RIGHT(◀/▶) BUTTON, and then press PLAY(▶) BUTTON.
- 3) Select the SOUND using LEFT/RIGHT(◀/▶) BUTTON, and then press PLAY(▶) BUTTON.
- 4) Select the MONO/STEREO using the UP/DOWN(+/-) BUTTON, and then press PLAY(▶) BUTTON.

Listening FM Radio/Recording FM Radio

7. Recording FM Radio

- 1) Press the MENU/REC BUTTON on the FM Radio mode, the FM radio will be recorded.
- 2) If you press the MENU/REC BUTTON again during the recoding, the recording will be stopped and file will be created.
- Recording file will be created under FM folder
- 3) If you press the MENU/REC BUTTON, the FM radio will be recorded on new file
- 4) If you press the PLAY(▶) BUTTON during the recording will be held, Press again the PLAY(▶) BUTTON, recording will be continued
- 5) The recored file can be listening on AUDIO MODE

Voice Recording

1. press the PLAY(▶) BUTTON to turn on power.
2. Press the MENU/REC BUTTON on the stop mode of AUDIO MODE, Recording will be started.
3. Press the MENU/REC BUTTON again during recording, the recording will be stopped and file will be created.
- recording file will be created under VOICE folder.
4. Press the MENU/REC BUTTON, the recording will be on the new file.
※ **During the recording, internal MIC should be directed to voice source.**

Playlist Function

Select the favor music and make the play List.

1. To make a Play List

- 1) Press the NAVI/HOLD BUTTON on stop or play mode.
- 2) Select the music to add using UP/DOWN(+/-) BUTTON, and then press the MENU/REC BUTTON.
- 3) Select the PLAYLIST by UP/DOWN(+/-) BUTTON, and then press the PLAY(▶) BUTTON.
- 4) Once you press the PLAY(▶) BUTTON during ADD is displayed, the selected song is added at playlist.
- 5) The 100 music can be Add

2. To play a Play List

- 1) Set the PLAYLIST mode at play mode option.(Refer page 12)
- 2) Songs in playlist is played by pressing PLAY(▶) BUTTON.

Playlist Function

3. Delete a PlayList

- 1) Set the PLAYLIST mode at play mode option.(Refer page 12)
- 2) Press the NAVI/HOLD BUTTON on stop or play mode.
- 3) Select the file to delete using UP/DOWN(+/-) BUTTON, and then press MENU/REC BUTTON.
- 4) When DEL is displayed, press PLAY(▶) BUTTON.

The file will be deleted on PLAY LIST

BOOKMARK Function

- ▶ Useful function to study by moving to certain point at song track where user save it as Bookmark.

1. Make BOOKMARK

- 1) [MENU]-[SET]-[GENERAL]-[BOOKMARK]-Set "ON" by UP/DOWN(+/-)BUTTON. (Refer page 14)
- 2) Press the MENU/REC BUTTON at the point you want to make BOOKMARK on play mode.
- 3) Maximum 100 BOOKMARKS is available.

2. Play the song with BOOKMARK.

- 1) Set BOOKMARK mode at play mode option.(Refer page 12)
- 2) Press the NAVI/HOLD BUTTON
- 3) Select the Song you want to play with UP/DOWN(+/-) BUTTON
- 4) Press the PLAY(▶) BUTTON, then the Song with BOOKMARK is played.

3. Delete BOOKMARK.

- 1) Set BOOKMARK mode at play mode option.(Refer page 12)
- 2) Press the NAVI/HOLD BUTTON
- 3) Select the Song you want to delete with UP/DOWN(+/-) BUTTON
- 4) Press the PLAY(▶) BUTTON, then the Song with BOOKMARK is deleted.

Resume Function in seconds

- ▶ This is a function that will resume playing the file from the location where it was paused when the power was turned off at pause and turned on to play again.
1. Press and hold the MENU/REC BUTTON to move on SET mode, and then press PLAY(▶) BUTTON.
 2. Select GENERAL mode using LEFT/RIGHT (◀◀/▶▶) BUTTON, and then press PLAY(▶) BUTTON.
 3. Select the "RESUME" using LEFT/RIGHT (◀◀/▶▶) BUTTON, and then press PLAY(▶) BUTTON.
 4. Select the "ON", and then press the PLAY(▶) BUTTON.

Time Step Function

- ▶ This function allows you to skip unnecessary parts and jump fast to the previous.
1. Press and hold the MENU/REC BUTTON to move on SET mode, and then press PLAY(▶) BUTTON.
 2. Select GENERAL mode using LEFT/RIGHT (◀◀/▶▶) BUTTON, and then press PLAY(▶) BUTTON.
 3. Select TIME STEP using LEFT/RIGHT (◀◀/▶▶) BUTTON, and then press PLAY(▶) BUTTON.
 4. Select the time step time what you want to set, then press PLAY(▶) BUTTON.
 5. During the playing, if you press and hold the LEFT/RIGHT (◀◀/▶▶) BUTTON, you can move to forward or backward as much as time step time.

Sleeping Function

- ▶ This is a function is Convenient when you want to fall asleep while listening to music.
- The player turns off after a set time.
1. Press and hold the MENU/REC BUTTON to move to SET mode, then press PLAY(▶) BUTTON.
 2. Select GENERAL mode using LEFT/RIGHT (◀◀/▶▶) BUTTON, and then press PLAY(▶) BUTTON.
 3. Select the SLEEP mode using LEFT/RIGHT (◀◀/▶▶) BUTTON, and then press PLAY(▶) BUTTON.
 4. Select the SLEEP time what you want to set, press the PLAY(▶) BUTTON. The device power will be off at the set time.

Play Speed Control Function

- ▶ This can control the speed slowly or fast for the part hardly heard of.
1. Press and hold the MENU/REC BUTTON to move to SET mode, then press PLAY(▶) BUTTON.
 2. Select PLAY mode using LEFT/RIGHT (◀◀/▶▶) BUTTON, and then press PLAY(▶) BUTTON.
 3. Select the SPEED using LEFT/RIGHT (◀◀/▶▶) BUTTON, and then press PLAY(▶) BUTTON.
 4. Select the speed(70%~130%), and then press PLAY(▶) BUTTON.
- NORMAL Speed : 100% Standard.

Temporary Pause Function for Recording

- ▶ You can pause recording to skip unnecessary parts from being recorded.
1. Press MENU/REC BUTTON on stop mode, recording will be started.
 2. Press PLAY(▶) BUTTON during recording, it will be paused.
 3. Press PLAY(▶) BUTTON again, pause will be released and recording will be continued.

4. Press the MENU/REC BUTTON during pause, the recording will be stopped.

File INTRO Function

- ▶ Plays the beginning 10 seconds of each track for searching.
1. Press and hold the MENU/REC BUTTON, and then select SET mode and press PLAY(▶) BUTTON.
 2. Select PLAY mode using LEFT/RIGHT (◀◀/▶▶) BUTTON, and then press PLAY(▶) BUTTON.
 3. Select REPEAT mode using LEFT/RIGHT (◀◀/▶▶) BUTTON, and then press PLAY(▶) BUTTON.
 4. Select the INTRO using UP/DOWN(+/-) BUTTON, then press PLAY(▶) BUTTON.
 5. During the INTRO mode, if you press PLAY(▶) BUTTON, INTRO mode will be released and you can listen the music continuously.

HOLD function

- ▶ As things stands, all button is not working to avoid undesired things.
1. To set the HOLD function
While in stop mode or play mode, press and hold the NAVI/HOLD BUTTON. LOCK symbol will be appeared on the LCD.
 2. To UNLOCK
When in HOLD mode, press and hold the NAVI/HOLD BUTTON again. LOCK symbol will be disappeared on the LCD
 3. To UNLOCK when the player is OFF while in HOLD mode.
After turning on the player, press and hold the NAVI/HOLD BUTTON during the "HOLD" is displayed

◆HOW TO MENU◆

● On Audio mode Mode Setting

- ▶ You can select the Audio (MP3/WMA/ASF and etc.) Play, FM and STOP WATCH mode.
- Press and hold the MENU/REC BUTTON and Select MODE, and then press PLAY(▶) BUTTON
- Select AUDIO/FM/STOPWATCH Mode using the LEFT/RIGHT(◀/▶) BUTTON, and then press PLAY(▶) BUTTON.

1. Audio mode

- Play the multi music file (MP3/WMA/ASF and etc.), and recording the voice

2. FM mode

- Listening the FM radio and recording the FM radio

3. STOP WATCH mode

- Time can be measured at the interval of 1/100 sec.
- Press the PLAY(▶) BUTTON to start. If you push again it, STOP WATCH will be stopped. If you start again, press the PLAY(▶) BUTTON
- To reset, press the RIGHT(▶▶) BUTTON
- To escape the STOPWATCH mode, Press and hold the MENU/REC BUTTON, and then change to the AUDIO/FM mode.

HOW TO SET

- ▶ Set and control the setting value
- ▶ PLAY, DISPLAY, RECORDING and GENERAL will be set

1. PLAY Set

- ▶ Set the Value of play related.
- Push and hold the MENU/REC BUTTON and select "SET", then press PLAY(▶) BUTTON
- Select the PLAY using LEFT/RIGHT(◀/▶) BUTTON, and then press PLAY(▶) BUTTON

1) PLAY MODE

- Can select NORMAL, PLAYLIST, BOOKMARK
- [MENU]-[SET]-[PLAY]-[PLAYMODE]-Set value by UP/DOWN(+/-)BUTTON.

2) REPEAT

- Can select OFF(NORMAL), REP_ONE(One track repeat), REP_FOL (Folder repeat), REP_ALL(All repeat), SHU_FOL (Folder shuffle repeat), SHU_ALL (All shuffle repeat) and INTRO (searching play)

3) EQ (EQUALIZER)

- Can select NORMAL, ROCK, JAZZ, LIVE, CLASSIC, POP, USER1, USER2, DBB
- User EQ support USER1 and USER2, which can be controlled by user.

4) EQ SET

- Can set the value of User EQ1, User EQ2, can be controlled by user.
- Set value the using UP/DOWN(+/-) BUTTON, and then press PLAY(▶) BUTTON to confirm the value

5) PLAY SPEED

- Can control the speed slowly or fast for the part hardly heard of

2. Display Set

- ▶ Set the value of OLED display related.

1) TYPE

- Set the display type of NORMAL, REMAIN, and ICON
- ICON will be displayed instead of general information on ICON mode.
- User can edit the ICON (Refer page 19)

2) M-SYNC

- ON/OFF the Lyrics display.
- Lyrics can be displayed during playing (only file has the lyrics)
- To see the lyrics, M-SYNC should be ON

3) OLED OFF

- Set the OLED off time
- If the set time is passed OLED will be off automatically at the set time

4) ID3 TAG

- ON/OFF the TAG information display

5) LANGUAGE

- Set the display language
- Available language are Korean, English, French, Germany, Italian, Japanese, Russian, Spanish, and Chinese

6) SCROLL

- Set the scroll speed of text
- SLOW, NORMAL, and FAST are available

7) Contrast

- Control the brightness of OLED

3. Record Set

- ▶ Set the value of the recording related

1) VOICE

- Set the recording quality, voice detection recording, and auto level control
- **BIT RATE** : Set the recording quality on voice recording. The range is 16kbps~160kbps. The higher bitrate will make a high quality recording
- **VOR** : Records only for the existence of sounds and stop the recording in case of no sound
 - ON : VOR recording setting NORMAL AND HIGHT two level
 - OFF : No VOR recording

2) FM

- Set the recording quality of FM recording
- The adjustable range is 32kbps~192kbps
- The higher bitrate will make a high quality recording
- Select the BIT RATE using UP/DOWN(+/-) BUTTON, and then press PLAY(▶) BUTTON to confirm recording quality

4. GENERAL Set

- ▶ Set the value of the general.

1) POWER OFF

-Automatically powers off after the set up time on stop mode.

-[MENU]-[SET]-[GENERAL]-[POWER OFF]-select by UP/DOWN(+/-) BUTTON

2) RESUME

-ON : In case of power is turned off on stop mode when play again after powers on, Playing will be started at the paused location.

-OFF : In case of power is turned off on stop mode when play again after powers on, Playing will be started from beginning.

-[MENU]-[SET]-[GENERAL]-[RESUME]- select by UP/DOWN(+/-) BUTTON

3) TIME STEP

- Allows you to skip unnecessary parts and jump fast to the previous

-Time step range is from 2seconds to 20minutes

-[MENU]-[SET]-[GENERAL]-[TIME STEP]-select by UP/DOWN(+/-) BUTTON

4) SLEEP

1) Automatically powers off after the setup time

for sleep while listening to the music.

2) [MENU]-[SET]-[GENERAL]-[SLEEP]-select by UP/DOWN(+/-) BUTTON.

5) BOOKMARK

1) Set function of MENU/REC BUTTON during playing

2) If BOOKMARK is ON, MENU/REC BUTTON is used for BOOKMARK function and if BOOKMARK is OFF, MENU/REC BUTTON is used for SECTION REPEAT function

3) [MENU]-[SET]-[GENERAL]-[BOOKMARK]-Set value by UP/DOWN(+/-)BUTTON.

6) DEFAULT

1) Initialize the setting values of the player.

2) [MENU]-[SET]-[GENERAL]-[DEFAULT]-Select by UP/DOWN(+/-) BUTTON

FORMAT

- ▶ Format function for stored data

-[MENU]-[FORMAT]-Select YES then press the by UP/DOWN(+/-) BUTTON.

※ **Warning! Notice that data cannot be restored after formatting.**

INFORM

- ▶ Can see VERSION, MEMORY information of the player.

1) [MENU]-[INFORM]-[VERSION or MEMORY]-press the PLAY(▶) BUTTON.

ON FM MODE

MODE Set

- ▶ Same as AUDIO MODE(Refer page 12)

Frequency Saving

- ▶ Can store the FM frequency
- can store up to 20 frequency, and scan it with convenience
- There are MANUAL and AUTO

1) MANUAL

- Store the frequency manually
-[MENU]-[FREQ.SAVE]-[MANUAL]-Select the PRESET number by UP/DOWN(+/-) BUTTON, and then press the PLAY(▶) BUTTON

2) AUTO

- Automatically scan and store the receivable frequency
-[MENU]-[FREQ.SAVE]-[AUTO]-Pressing the PLAY (▶) BUTTON will be implemented automatically

How to Set

- ▶ Adjust the various value

- Same as AUDIO MODE(Refer page 12~14)

1) BIT RATE

- Same as AUDIO MODE(Refer page 13)

2) OLED OFF

- Same as AUDIO MODE(Refer page 13)

3) POWER OFF

- Same as AUDIO MODE(Refer page 14)

4) SLEEP

- Same as AUDIO MODE(Refer page 14)

5) AREA

- Select the country you are staying (KOR/USA, JAPANESE/EU)

- Selecting correct country is required as frequency range is different according to each country.

- [MENU]-[SET]-[AREA]-Select by UP/DOWN (+/-) BUTTON

6) SOUND

- Select the MONO and STEREO

- [MENU]-[SET]-[SOUND]-Select by UP/DOWN (+/-) BUTTON

INFORM

- ▶ Same as AUDIO MODE(Refer page 15)

Using Music Friend

1. Connecting to PC and using Music Friend

- ▶ You can transfer files between your PC and the player as well as the functions of playback, image editing, lyrics editing, emailing in Music Friend.

2. Installing MusicFriend

- 1) Should install "Windows 98/Me Driver" to PC for connecting digital audio player and PC when user uses Windows 98/ME operating system.
- 2) Windows 2000/XP can recognize the player as "Removable Disk" without installing "Windows 98/Me Driver".
- 3) Every user should install "MusicFriend" for operating image editing and multimedia image editing for digital audio player.

3. Required system

- Computer : Pentium or compatible supporting USB port
- Memory : Over 64MB
- Operating System : Windows 98/ME/2000/XP

- Hard Disk : 50MB free hard disk space
- Playing : Sound card, Speaker

- 1) Installation screen appears after inserting "MusicFriend" installation CD into the CD-ROM drive.
- 2) Select program to install on the program list of the right screen.



[Important]

Please install "Windows 98/Me Driver" for Windows 98/Me user.

Click "Exit" button for stop the installation.



Viewing HELP

- ▶ detailed using methods are described in HELP.
- ▶ After the installation, Shortcut icon  will appear on the screen of PC.
 1. Double click the Shortcut Icon , then MusicFriend will be executed.
 2. Select the HELP in main menu. HELP will appear.

1. Deleting MusicFriend

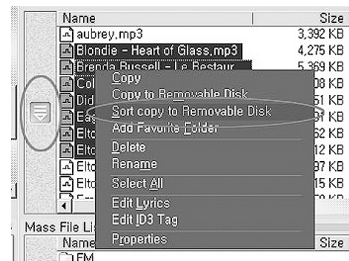
- Method 1)
Start from the PC → Setting → Control Panel → add/remove programs → MusicFriend P Ver 5.00 → Select add/remove for deleting.
- Method 2)
Start from the PC → Program → MusicFriend 5.0 → MusicFriend P → Select "Uninstall MusicFriend P 5.0" for removing the program.

2. Operating Files

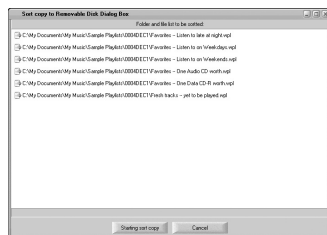
- In case of downloading PC files into the player, copy by sorting or array the files in the player as well.

[Copying from PC to the Flash memory (MP3 player) by sorting]

- 1) After select the desired files in PC list, select "Sort copy to Removable Disk" on mouse right menu or click the button of "copy to the Removable Disk" on left menu.



- 2) Click the "Starting sort copy" after array the files in the [Sort copy to Removable Disk Dialog Box].




- 3) After sort copy is completed, [Sort copy to Removable Disk Dialog Box] will automatically be closed. After selecting "safely remove hardware" on the right bottom of the PC monitor, remove the cable.


Text editing Function(Possible only in pc)

- ▶ Can add or edit the text in MP3 file. Can see the content of the edited text while playing the file.

[Inserting the text for the first time]


- 1) Select [File]-[Edit Lyrics] or click the text edit button  in Tool bar in the main menu. Or click the right button of mouse in the MP3 file for inserting text then call the [Edit Lyrics] in the pop-up menu.



- 2) Text edit screen will appear. Please insert the wanted text.
3) After finishing text edit, click the "save" button . Select the MP3 file for storing text on the dialog box. When the MP3 file is played, inserted text will be appeared on the screen.




[Editing inserted text]


After select the MP3 file for editing, click the right button of mouse, then pop-up menu will appear on the screen. Select "Edit Lyrics" on the pop-up menu. The previous text will be displayed on the text edit screen. After editing the text correctly, click the "save" button . When the MP3 file is played, edited text will be appeared on the screen

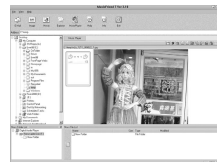
Log in/out, Image Edit Function

1. Image Editing

- 1) Can make the image file displayed on digital audio player. Select the [File]-[Edit Image] command on the main menu or click the image edit button  on the Tool bar. Image view screen will appear.




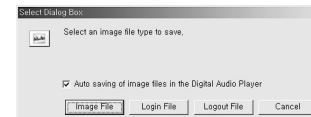
- 2) Selected image will appear on whole view.
3) Using the image edit Tool Bar , you can change the size or location of the image as you wish.



- 4) Modify the location by pressing left mouse button and select the applicable range of the image for using in digital audio player. Selected range will be 1/2 reduced and displayed on the screen.



- 5) After finishing selection of the image range, click the "save" button . Select the types of image file on the dialog box.





- Image file : will be made for digital audio player and automatically saved in digital audio player.

- Login file : will be made for digital audio player and automatically saved in IMAGE folder of digital audio player.
- Logout file : will be made for digital audio player and automatically saved in digital audio player.

6) Each file will store up to 10 (it will be continuously stored as same file name)

- If you disconnect with PC, and then connect it again with PC you can continuously store up to 10, too.

7) When saving is completed, click the close button  or search button  on main Toll bar. This will change into the PC file list screen.

8) Can confirm the image file thru the preview screen if selecting the saved image file on the file list screen of the digital audio player.

Using Media Sync

Using mediaSync Manager

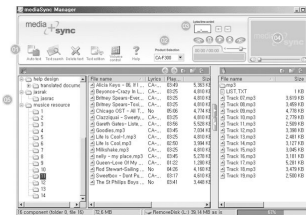
- ▶ mediaSync Manager can store the text automatically/manually into the music file and support various functions such as file download/upload, mp3 file volume control, etc. as the portable device.

1. mediaSync Manager Configuration

- mediaSync Manager is composed of basic screen, text search screen and sound volume control screen, and text search screen, text edit screen and sound volume control screen will appear separately by pressing the icon

- mediaSync Manager Basic screen

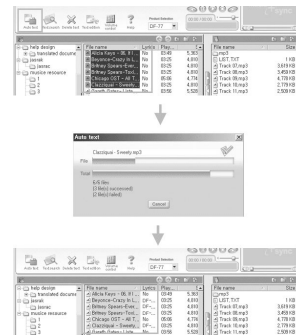
- ①Function Icon
- ②Select product
- ③Control text time
- ④Player
- ⑤PC / portable device screen



2. Auto text

- After selecting one or several files for storing the text in PC screen, pressing auto text will search and save the text automatically.

- Saved text file will be displayed on the PC screen as a product name from the text.
- Selecting several files at once, use Shift/ Ctrl like the Windows Explorer.
- When saving the text, progress box will appear and show the process and number of successful and failed file from saving.

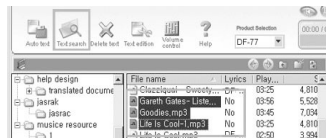


3. Search text

- directly search and save the text of file which couldn't find by auto text.

▶ Order of search text

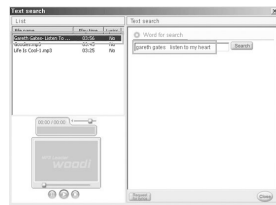
- ① Click search text after selecting file
: After select one or several files for search text in PC screen, pressing search text button will show the search text screen.



② Insert search word

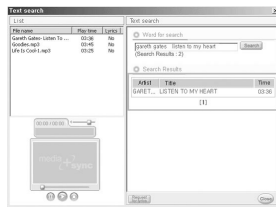
: Selecting the file for searching by mouse on the list of search text screen will input the name of singer and title automatically to the right search screen.
- If the inserted text is not appropriate,

user can insert or modify the search word directly.



③ Pressing Search button

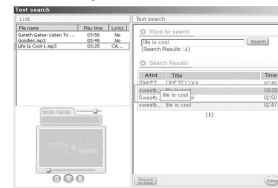
: After inserting search word, pressing search button show the result of search text. In case of no or less result, it will can be searched by modifying the search word.



Using Mediasync (to be Continued)

④ Select text

: The selected text is saved in to the file by choosing the lyric with correct playing time. And the lyric part in the file will be changed with name of product name.



⑤ Confirm text

: After saving the text, user can confirm whether the text fits well by playing search screen player.

- If the saved text does not fit with the music, user can search the text again and save the new text after the selection.
- In case there is no correct lyric after the search under several condition, user can move to SyncSong site by clicking the "lyric request" button and leave a request message on the bulletin board.

4. Delete text

- 1) User can delete the inappropriate text for the music after saving the text.
- 2) After selecting one or several files for deleting text in the PC Screen, pressing Delete text icon will delete the stored text unrelated with music file.
 - File deleted the text is displayed with "NO" on the text part in PC screen.
 - Selecting several files uses Shift/ Ctrl key like Windows Explorer.



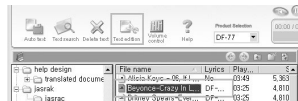
5. Edit Text

- user can edit or save the text directly to the music file.

▶ Order of Edit text

- ① After selecting file, click the edit text
: After selecting one file for editing the text on PC screen, pressing Edit text will shows the Edit text screen.

- In case of inserting the text directly to the file without text, copy and paste the text from the Text editor screen on the Web popping with the Edit text.



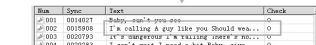
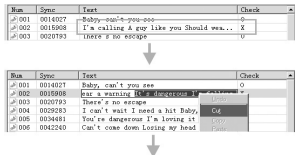
② Editing the Text

: Edit the lyrics in the text line to be suitable to syllable and the size of player's LCD.

- The edited lyric in a lyric line is displayed once on the LCD while in play mode.

Thus, the mark "O" on text line check screen means that the lyric is displayed properly.

If "X" or "V" is showed, the lyric cannot be displayed properly and therefore lyric edition should be performed once again.



③ Playing section of edited text

: Play the music to insert time information into the text.. After playing the music by pressing PLAY button, double clicking of musical note(🎵) on NUM part of text line will play the music from the above of text line for playing specific test line.

④ Input the text time

: After selecting the text line by mouse for modifying, press the bottom **Sync insert** of the Text edit screen and insert the time information when the text displays from the playing.

- If user presses the 'Sync insert' on the text line having the time information, new time information will be saved by covering the previous one.

⑤ Confirming the text

: After checking 'preview' on the bottom of Edit text screen and playing, the text will appear on the right side of text screen.

- In case of editing the text for inappropriate text, removing the check indication can make use of 'Sync Insert' button.

Using Mediasync (to be Continued)

⑥ Saving the text

: After finishing text edit and confirmation, save the music file by pressing 'Audio saved' button.

- Text can be saved together with the music file so that it should be saved in different name in case of saving music files which do not have the text.

- When saving the text by 'Audio saved', two types of files will be created by same name.

- One is the music file with the text(*.mp3) and another is the edited text file(*.wmi).

- In Media Sync supported Portable audio player, downloading the music file with the edited text can display the text on LCD during the play.

Additional Functions

▶ Time control

: Seconds(1.5 is 1.5 seconds) in time control screen can control the text time slowly with the inserted time by + and fast with the inserted time by - entirely.

1. Language selection

- In case of Japanese, Chinese text, setting the CHARACTER SET on the right Edit text

screen into the following language will not break the text.

2. Inserting the text line

- New text line will be added by clicking the right button of mouse placed on the upper text line of inserting position.

3. Deleting the text line

- Selected text line will be deleted by pressing 'OK' button after choosing the text line for deletion by clicking 'Delete' with the right button of mouse and select the 'Delete all line'.

4. Deleting text time information

- Time information of the text line will be deleted by clicking 'OK' button after choosing the text line for deletion by clicking 'Delete' with the right button of mouse and select the 'Delete all line'.

5. Using edited text file(*.wmi)



1) After editing the text, if the saved and edited text file(*.wmi) is shared with friends and other people, user who downloaded the file can save the text without editing the text.

2) After calling the music file by clicking "Open Audio" on the Edit Text screen and calling the text file(*.wm) by clicking 'Open Sync' in the Text editor, pressing 'Audio saved' on the Edit text screen will save the text on music file without any special editing.

6. Controlling the text time

1) After saving the text, when the text displays slower or faster than the music, user can adjust the time of text.

2) Confirm the appropriate text and music by playing the saved file. If the text displays slower or faster than the music, insert the adjusted time on text time control screen by pressing +, - buttons. Number inserted on the text time control screen is in seconds. (example: 2.50 is 2.5 seconds)

- If the text is slower than the music
 - After inserting the adjusted time on the text time control screen, press  button for adjusting the text time faster.
- If the text is faster than the music
 - After inserting the adjusted time on the text time control screen, press  button for adjusting the text time slower.



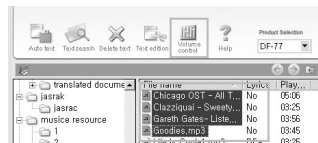
7. Adjusting the sound volume

- the sound of mp3 files can be adjusted in different volumes.

- Order of adjusting sound volume

① After selecting the file, click the sound volume

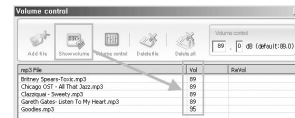
: After selecting one or several MP3 files for adjusting sound volume in PC screen, pressing Sound volume control button will show the screen. Also, File for adjusting the sound volume can be opened by pressing 'Add file' on sound volume control screen and can be deleted on the list by using 'Delete file/all deleted' button if user does not want the file adjusted on the Sound volume control screen.



Using Mediasync (to be Continued)

② Confirming the sound volume

: Confirm the present sound volume by pressing 'Sound volume display' button. When pressing the button, current sound volume will be displayed on vol box.



③ Inserting sound volume on Sound volume control screen

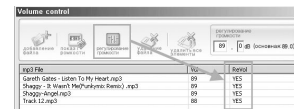
: insert the value of adjusted sound volume. Basic sound volume is 89 dB and high sound volume can cause the machinery sound or static noises so it is recommended under 95 dB.

④ Adjusting Sound volume

: Adjust the sound volume by pressing. When completing the adjustment of

sound volume, ReVol box shows the result of the sound volume control.

In case of current sound volume having same or similar with the adjusted sound volume, 'No need of sound volume control' will be displayed and adjusted file shows 'YES'.



Customer Service

Specifications

Category	Item		Specifications
AUDIO	File Support		MPEG 1/2/2.5/3 Layer3, WMA, ASF
	Channel		Stereo
	Frequency Range		20Hz ~ 20KHz
	Earphone Output		20mW(L)+20mW(R):16Ω, Maximum Volume
	S/N Ratio		Over 90dB (With 20KHz LPF)
FM RADIO	Frequency Range		87.5MHz ~ 108MHz(Korea/USA/Europe), 76MHz ~ 108MHz(Japan)
	Earphone Output		20mW(L)+20mW(R):16Ω, Maximum Volume
	S/N Ratio		Over 55dB (With 20KHz LPF)
	Receiver Type		Earphone Cord Antenna
Record	Voice recording time	256MB	Up to 36hours(16Kbps)
		512MB	Up to 72hours(16Kbps)
		1GB	Up to 144hours(16Kbps)
	Sound Quality	Voice Recording	Sampling Freq : 22.05KHz
			Bit Rate : 16, 32, 64, 96, 128, 160Kbps
		FM Radio	Sampling Freq : 44.1KHz
Format	Decode Format		MP3, WMA, ASF
	Encode Format		MP3
PC Interface	System OS		Windows98/ME/2000/XP/MAC OS(Over 9.0)
Power Supply	Power		Li-ION Rechargeable battery 3.7V
	Playing		Up to 12hours of battery life for playing in earphone
General specification	Size		32(L)×47(H)×17(T)(mm)
	Weights		about 24g(battery included)
	Accessories		Earphone, USB connecting cable, Music Friend CD,
			User's Manual/Warranty, Neck Strap

Warranty for Product

Services

1. This is the product that has been produced through strict quality control and inspection process.
2. We will provide free of charge service for you in case that there are some problems with the product within the period of warranty while using it in a normal manner.
3. We will provide charged service for you in case that it corresponds to the charged service even if it is within the period of warranty.
4. The said warranty is valid only in this country.
5. The period of gratuitous warranty is six months in case that the said product is used for marketing and sales (marketing activities and abnormal user's environment).
6. Please fill out the designated form within the (warranty for product) and keep it safely.
7. Please feel free to contact where you have purchased your product in case that it does not function well.

Name of product	DIGITAL AUDIO PLAYER		
Name of Model			

Date of Purchase		Period of warranty	a year
Place where the product is purchased		Purchasing amount	
Telephone		Won	

Customer	Address		
	Name		
	Telephone		

Charged Services

- Malfunction due to the mishandling while using the product
- Malfunction due to the internal reconstruction by the user at will
- Malfunction due to the natural calamity such as fire, damage from sea wind, flood damage and earthquake

Notice

1. Do not drop or impact the player against the objects. This may result the damage of the player.
2. Keep the device out of the place as following.
 - Place in very high temperature (Over 60°C)
 - Direct sunlight or near to heater
 - Inside car with closing the window (Especially in Summer)
 - Humid area such as bathroom
 - Dusty area
3. Do not use excessive force to LCD.
 - This may result the damage and cause the problem on display part of LCD.
4. Keep the player away from the strong magnets such as cash card, special card and other card using magnets. This will damage the card.
5. Damage from the use of this device and claim for damages from the third party will not be

responsible to the company.

6. Damages from breaking down, repairing and loss of recording message from the other causes will not be responsible to the company.

THIS DEVICE COMPLIES WITH PART 15 OF THE FCC RULES. OPERATION IS SUBJECT TO THE FOLLOWING TWO CONDITIONS: (1) THIS DEVICE MAY NOT CAUSE HARMFUL INTERFERENCE, AND (2) THIS DEVICE MUST ACCEPT ANY INTERFERENCE RECEIVED, INCLUDING INTERFERENCE THAT MAY CAUSE UNDESIRE OPERATION.

FCC RF INTERFERENCE STATEMENT

NOTE :

This equipment has been tested and found to comply with the limits for a Class B digital device, pursuant to Part 15 of the FCC Rules. These limits are designed to provide reasonable protection against harmful interference in a residential installation.

This equipment generates, uses and can radiate radio frequency energy and, if not installed and used in accordance with the instructions, may cause harmful interference to radio communications. However, there is no guarantee that interference will not occur in a particular installation.

If this equipment does cause harmful interference to radio or television reception which can be determined by turning the equipment off and on, the user is encouraged to try to correct the interference by one or more of the following measures.

- Reorient or relocate the receiving antenna.
- Increase the separation between the equipment and receiver.
- Connect the equipment into an outlet on a circuit different from that to which the receiver is connected.
- Consult the dealer or an experienced radio, TV technical for help.
- Only shielded interface cable should be used.

Finally, any changes or modifications to the equipment by the user not expressly approved by the grantee or manufacturer could void the users authority to operate such equipment.

Memo