

WMS 100 Image
Wireless Multimedia System

Quick Reference

Copyright

© 2005, NewSoft Technology Corp. All Rights Reserved. No portion of this document may be copied or reproduced in any manner without prior written permission from NewSoft Technology Corp.

To purchase additional Presto! WMS user licenses, visit the NewSoft Licensing Section at:

English (North America): <http://www.newsoftinc.com/licensing/wms>

English (UK): <http://uk.newsoft.eu.com/licensing/wms>

French: <http://fr.newsoft.eu.com/licensing/wms>

German: <http://de.newsoft.eu.com/licensing/wms>

Italian: <http://it.newsoft.eu.com/licensing/wms>

Traditional Chinese: <http://www.newsoft.com.tw/licensing/wms>

Simplified Chinese: <http://www.newsoft.com.cn/licensing/wms>

509200-02-07-W-E-123005-02

USA: www.newsoftinc.com

Taiwan: www.newsoft.com.tw

Japan: www.newsoft.co.jp

Europe: www.newsoft.eu.com

China: www.newsoft.com.cn

Contents

<i>About the WMS 100 Image</i>	1
Cautions	1
System Requirements	1
Checking the Packing List	2
<i>Setting up the WMS 100 Image</i>	3
Connecting the Device.....	3
Installing the Software	7
<i>Starting a WMS Presentation</i>	8
<i>Setting up and Updating the Firmware</i>	9
Connecting to the Firmware.....	9
Adjusting the Settings on the Firmware	10
Downloading the Installation Program	12

Federal Communication Commission Interference Statement

This equipment has been tested and found to comply with the limits for a Class B digital device, pursuant to Part 15 of the FCC Rules. These limits are designed to provide reasonable protection against harmful interference in a residential installation.

This equipment generates, uses and can radiate radio frequency energy and, if not installed and used in accordance with the instructions, may cause harmful interference to radio communications. However, there is no guarantee that interference will not occur in a particular installation. If this equipment does cause harmful interference to radio or television reception, which can be determined by turning the equipment off and on, the user is encouraged to try to correct the interference by one of the following measures:

- Reorient or relocate the receiving antenna.
- Increase the separation between the equipment and receiver.
- Connect the equipment into an outlet on a circuit different from that to which the receiver is connected.
- Consult the dealer or an experienced radio/TV technician for help.

FCC Caution: *To assure continued compliance, any changes or modifications not expressly approved by the party responsible for compliance could void the user's authority to operate this equipment. (Example - use only shielded interface cables when connecting to computer or peripheral devices).*

FCC Radiation Exposure Statement

This equipment complies with FCC RF radiation exposure limits set forth for an uncontrolled environment. This equipment should be installed and operated with a minimum distance of 20 centimeters between the radiator and your body.

This device complies with Part 15 of the FCC Rules. Operation is subject to the following two conditions:

(1) This device may not cause harmful interference, and (2) This device must accept any interference received, including interference that may cause undesired operation.

This transmitter must not be co-located or operating in conjunction with any other antenna or transmitter.

The antennas used for this transmitter must be installed to provide a separation distance of at least 20 cm from all persons and must not be co-located or operating in conjunction with any other antenna or transmitter.

U-NII device that operates in the band 5.15—5.25GHz band will be restricted to indoor operations to reduce any potential for harmful interference to co-channel MSS operation.

About the WMS 100 Image

Congratulations on your purchase of the WMS 100 Image. First things first, let's check your system requirements to make sure that the WMS will operate smoothly.

Cautions

- Do not use the WMS 100 Receiver device in extremely hot, cold, dusty, or wet environments.
- Do not rub or impact the WMS 100 Receiver device with hard things, it can cause surface scratches or hardware damage.
- Do not disconnect the WMS 100 Receiver device when it is being used. It may lead the program errors.
- Follow the directions on the power adaptor; use the WMS 100 Receiver device with the proper current and voltage range.

System Requirements

Here is a list of requirements and suggested capabilities you should have in order to make the best use of Presto! WMS.

For Presto! WMS software

- Intel Pentium 4 processor, 800 MHz or faster.
- Windows 2000 or XP with DirectX 8.1 or later.
- A minimum of 128 MB RAM.
- 1MB of available hard-disk space required for installation.
- A display card supporting 16-bit high color or true color with 800 x 600 or above resolution. (1024 x 768 is recommended.)
- Wireless multimedia card based on the IEEE 802.11a, b, or g standards.
- For transmitting desktop images, the following resolutions are supported: 800 x 600, and 1024 x 768.

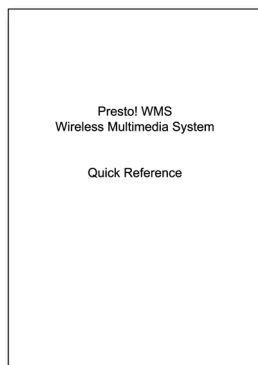
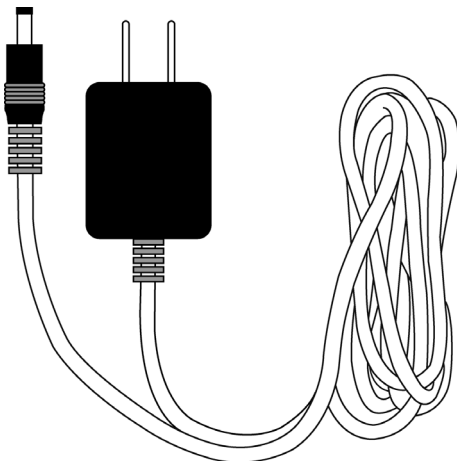
For the WMS 100 Receiver Device

- Taifatech's WMS-R hardware.
- Embedded WLAN adapter.
- VGA output.

Checking the Packing List

When you open your WMS 100 Image product package, you should find the following items.

- WMS 100 Receiver device
- Power adaptor
- Software CD
- Quick guide



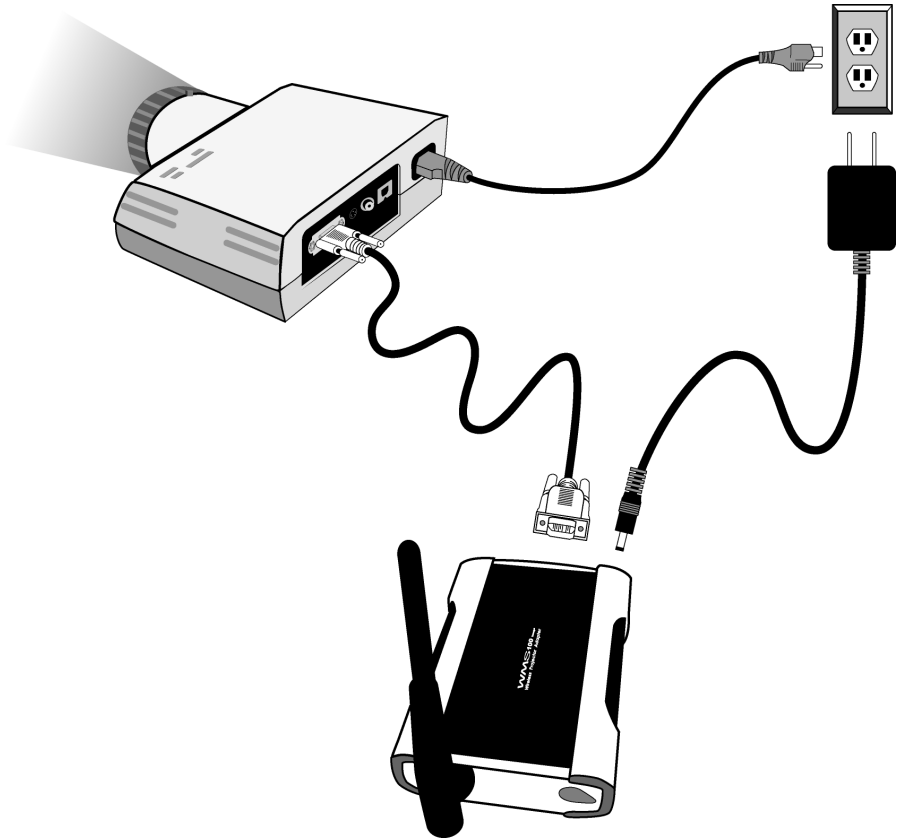
Setting up the WMS 100 Image

Now that all the equipment is accounted for, we can plug it all in and get it working for you.

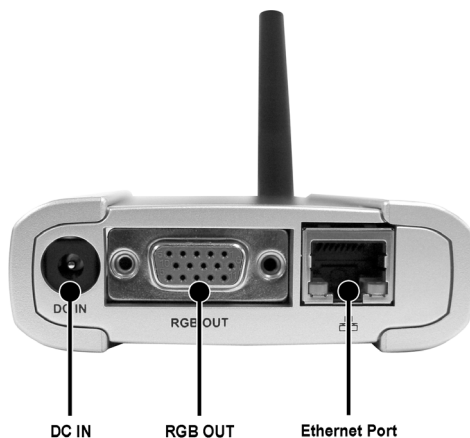
Connecting the Device

Make sure you have not opened the WMS program before you connect your device.


For a Wireless Presentation



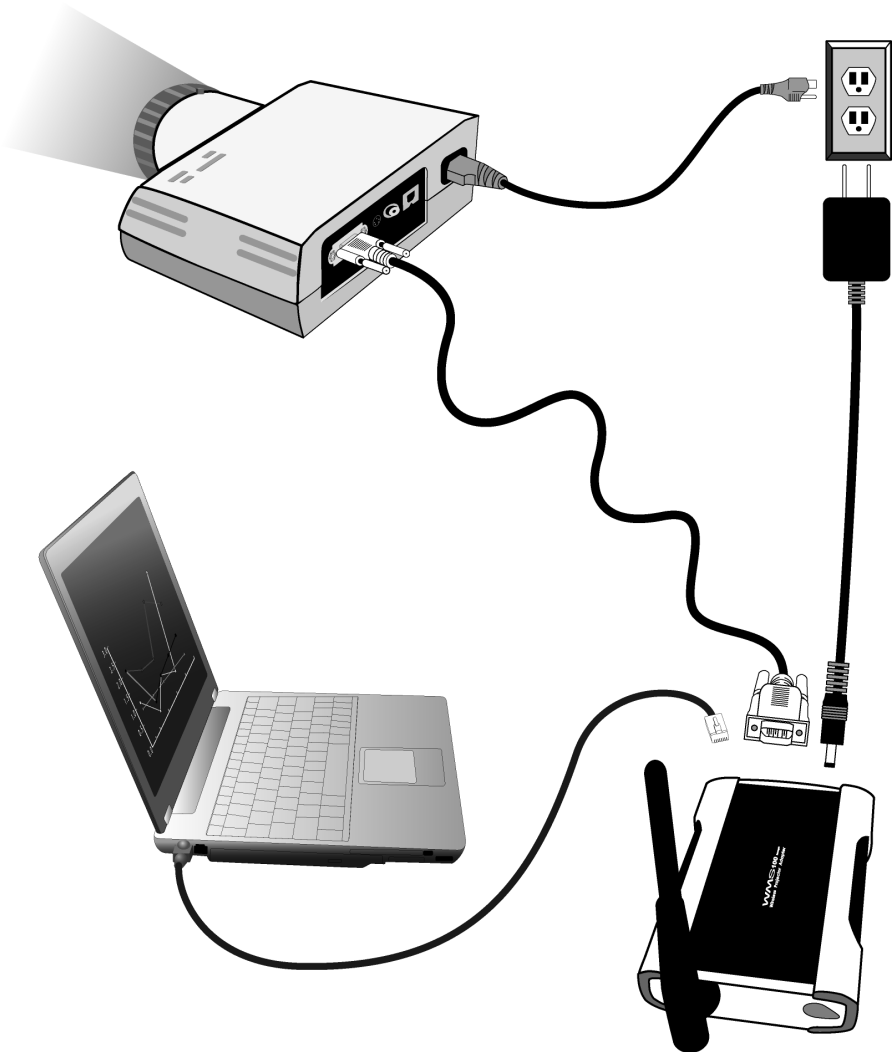
1. Insert the VGA cable into the **RGB OUT** connector, and then plug the other end into the projector or a monitor.



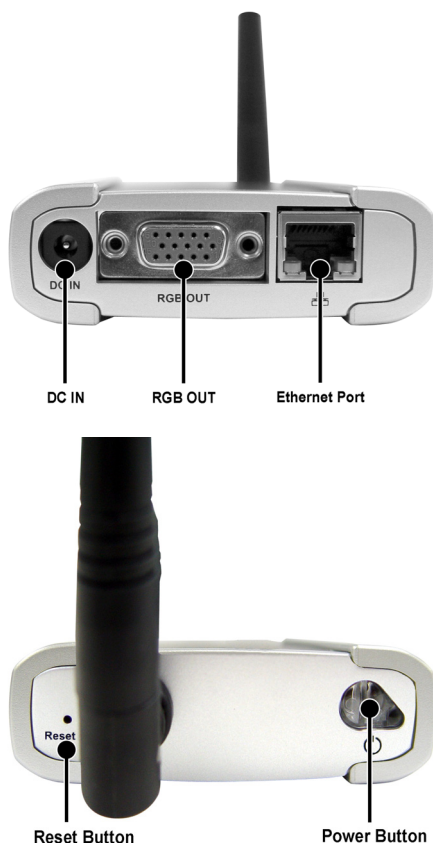
2. Plug the power adaptor into the **DC-IN** port. It will be powered immediately. To switch it off, click the power button.
3. Start Presto! WMS, click Settings, and select the WLAN card.

 *If you want to reset the WMS 100 Receiver device to the default settings, close the Presto! WMS program, and depress the reset button for five seconds.*


For a LAN Presentation



1. Insert the Ethernet cable into the Ethernet port of the WMS 100 Receiver device, and then plug the other end into the computer.
2. Insert the VGA cable into the **RGB OUT** connector, and then plug the other end into the projector or a monitor.



3. Plug the power adaptor into the **DC-IN** port. It will be powered immediately. To switch it off, click the power button.
4. Start Presto! WMS, click Settings, and select the LAN card.

 *If you want to reset the WMS 100 Receiver device to the default settings, close the Presto! WMS program, and depress the reset button for five seconds.*

Installing the Software

Before you begin, make sure the hardware is correctly set up and the WLAN card has established the connection to the WMS 100 Receiver device. Follow the steps here.

1. Insert the disc into the disc drive. The installation program will automatically open and guide you through the process.
2. You may see a dialog box like the ones shown below. Click **Continue Anyway** to proceed.



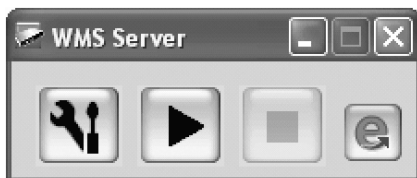
3. Click **Finish** to complete the installation.





Presto! WMS is now ready to use.

Starting a WMS Presentation

Presto! WMS lets you broadcast from a computer to an adapter and then to a display device like a projector or a monitor. The **Presto! WMS** control panel will open when the program is started.

Here are the controls and an explanation of the available buttons.




- Click the **Setup** button  to select the network interface card.
- Click the **play** button  to broadcast the desktop image.
- Click the **Stop** button  to end the transmission.
- Click the **Link** button  to connect to the NewSoft website.

For more details of the Presto! WMS, please refer to the user guide.

Setting up and Updating the Firmware

The WMS 100 Receiver device also includes the firmware to adjust your WLAN, LAN, WEP, and other settings. You can also download the installation program.

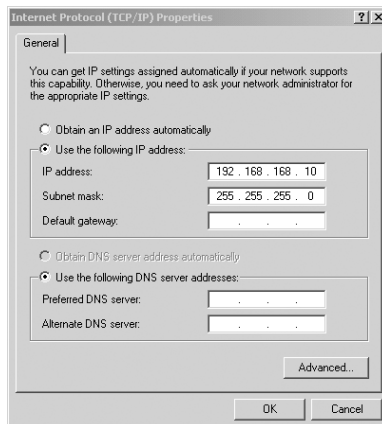
Please refer to the steps below.

 *After you update the firmware, you have to reset your WLAN card settings and establish the connection to the WMS 100 Receiver.*

Connecting to the Firmware

1. Insert an Ethernet cable into the network connector of the WMS 100 Receiver device, and then plug the other end into the computer.
2. From the **Windows Start** menu, point to **Settings**, and click **Control Panel**.
3. Double-click **Network and Dial-up Connector**.
4. Point to **Local Area connection**, right-click, and select **Properties**.
5. Select TCP/IP and change the settings for following areas, click **OK**, and then click **Close**.

- Enable Use the following IP address.
- For the IP address, type:
192.168.168.10
- For the Subnet mask, type:
255.255.255.0



- 6. Open your Internet browser and type the address as: 192.168.168.30(This is the designated IP address for the WMS 100 Receiver device).
- 7. The log in screen for the firmware will appear. Type "admin" as the user name and "1234" as the password, and then click **OK**.

Welcome to WMS 100 Image!

Login

Please enter user name and password

User Name

admin

Password

OK

Cancel

Adjusting the Settings on the Firmware

- 1. The maintenance screen will open. From this screen, you can check the status or change the LAN, WLAN, User name, and Password settings.

WMS 100 Image

General Status

Status

General and LAN

WLAN

Set-Up

LAN

WLAN

Maintenance

Change Username/Password

Download WMS

Site Survey

Device Information:

Device Name:	NetVGA + Atheros Station 5004x5006x
Firmware Version:	1.04 (2005/10/14 09:42) + Atheros 0.932 (5915)
Up Time:	0 days, 0 hours, 1 minutes, 51 seconds

LAN Settings:

MAC Address:	00:15:73:00:12:10
IP Address:	10.65.162.15
Subnet Mask:	255.255.255.0
Gateway:	0.0.0.0

Refresh


- In the Wireless LAN Setup screen, you can change the WLAN card standard by selecting 802.11A, 802.11B, or 802.11G.

WMS 100 Image :: WLAN Setting

- Status
 - General and LAN
 - WLAN
- Set-Up
 - LAN
 - WLAN
- Maintenance
 - Change Username/Password
 - Download WMS
 - Site Survey

Wireless LAN Settings:

Country: NO COUNTRY SET
 Region: FCC1 FCCA
 SSID: [WMS100-IMAGE]
 Network Type: [adhoc]
 Authentication Mode: [Open System]
 Channel: [11]
 Transmit Rate: [24 Mbps]
☒ 802.11A ☒ 802.11B ☒ 802.11G
 [Apply] [Cancel]

 Note that for this area, you can select multiple options. If you select more than one option, the system will select the suitable WLAN card for your computer.

- To update the firmware, select **Maintenance** and click **Update Firmware**.

WMS 100 Image :: Maintenance

- Status
 - General and LAN
 - WLAN
- Set-Up
 - LAN
 - WLAN
- Maintenance
 - Change Username/Password
 - Download WMS
 - Site Survey

Update Firmware [Update Firmware]
 Factory Defaults [Reset to Defaults]
 Reboot Bridge [Reboot Bridge]



Downloading the Installation Program

The Presto! WMS installation program can be installed from the maintenance screen.

1. Click **Download WMS**.
2. Follow the instruction on the screen and save the files to your computer.
3. Click **setup.exe** to install the program. For more details, please refer the Installing the Software section.