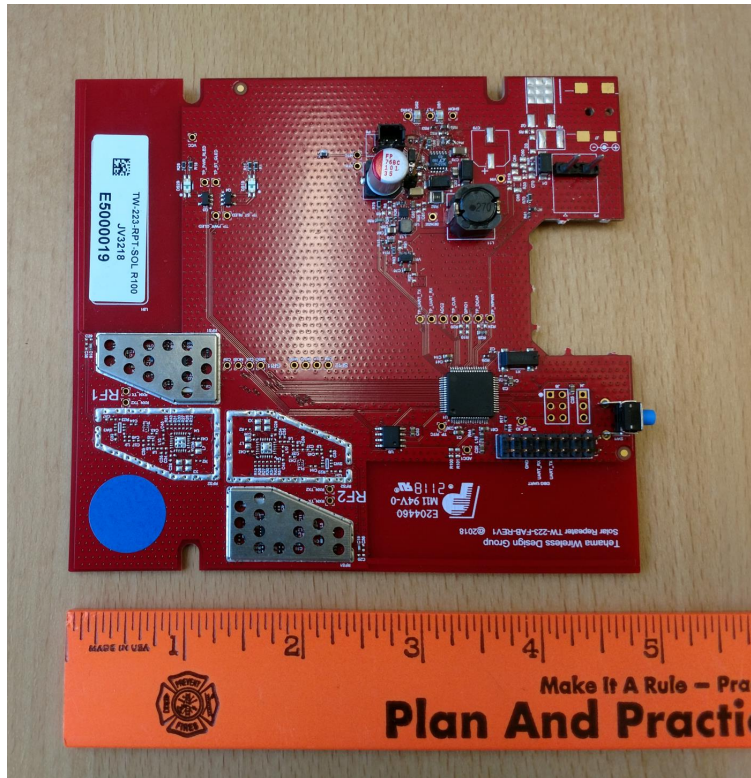
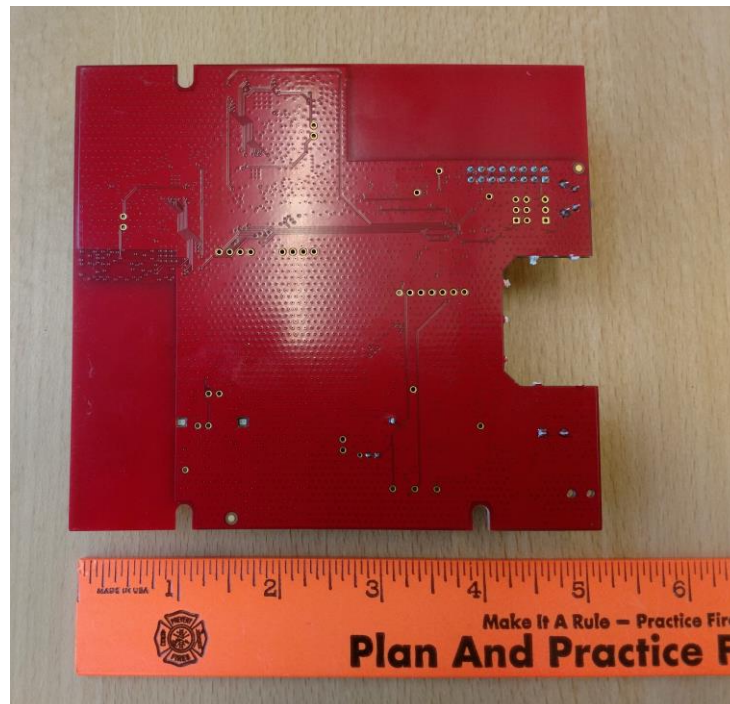


Internal Photographs RPT TW223

1.Views with Shielded RF sections



Front View

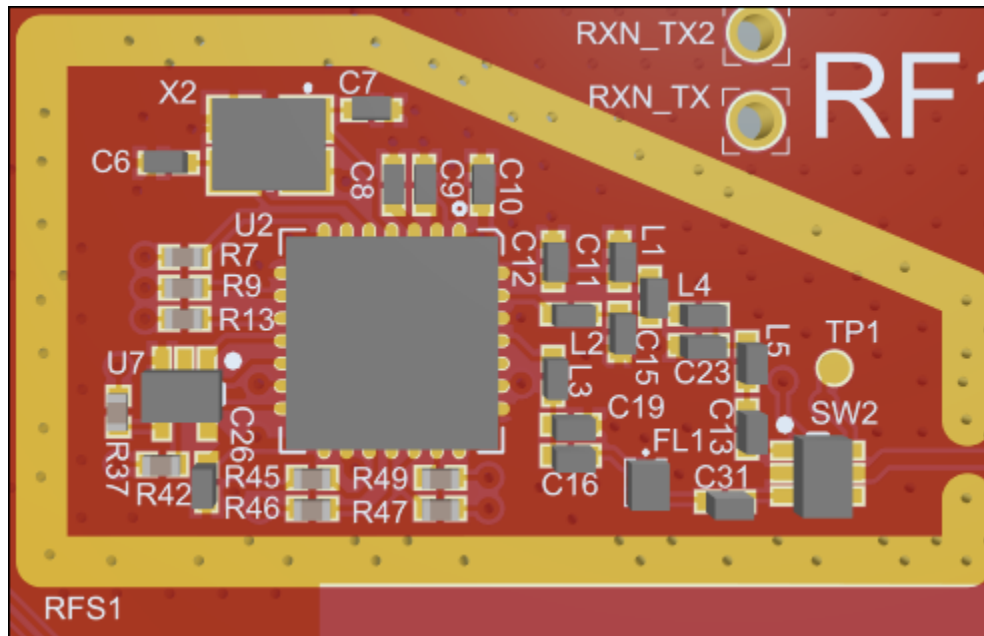


Back View

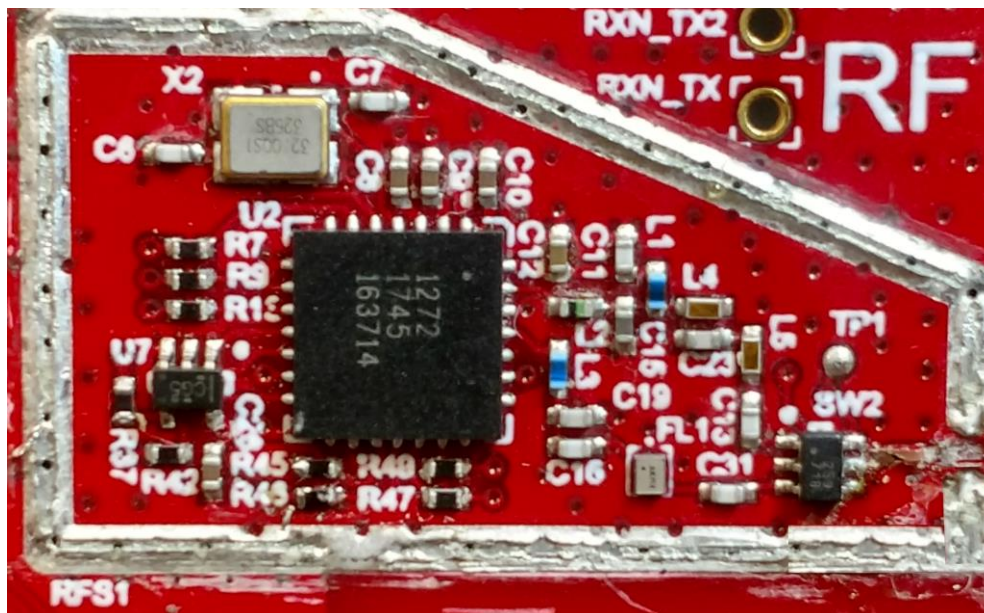


2.Unshielded view of the RF section

Both RF transceivers under RF shields in the pictures above are identical (same layout and same Reference designators).



3D model of the RF section



Photograph of the RF section



3.Highlighted view of the antennas

The two RF transceivers use a quarter wave length PCB trace antenna highlighted in the picture below:

