



-+

SPECIFICATION FOR APPROVAL

CUSTOMER:

PRODUCT NAME:

Bluetooth Hands-free Car Kit

PRODUCT ITEM:

BT-04T, BT-04V, BT-04U

CUSTOMER'S PART NO:

QUANTITY:

DATE:

2005/07/01

CUSTOMER'S SIGNATURE	DATE

CUSTOMER'S OPINION

China Factory: Tong Fu Yu Ind., Ku Keng Village.Guan Lan,Bao An District,Shenzhen,China

TEL: 0755-28088244 FAX:0755-28088153

<http://www.sunitec.com.tw>

e-mail: sunitec@vip.163.com

1. Introduction

This BT-04T is a Class 2 Bluetooth hands-free car kit based on CSR Bluetooth wireless technology. The solution design is based on SUNITEC BC03-Mutiplemedia (Model : BCM-06).

2. Specifications

Operating Frequency Band	2.4GHz ~ 2.48GHz unlicensed ISM band
Bluetooth Specification	V1.2
Support Profiles	Headset1.1&Handsfree1.0 Profiles
Output Power Class	Class 2
Power Supply	from automotive cigar lighter power
Voltage Range	DC12-24V
Range of operation	Max 10m line of sight
Dimension	152x58x32mm
Visual Indication	1 LED (Green)
Number of Operating Buttons	1 Multi Function Button

3. Feature Lists

- Operation Frequency Band: 2.4GHz ~ 2.48GHz unlicensed ISM band
- Compliance with Bluetooth Specification Version 1.2
- Support Headset1.1 and Handsfree 1.0 Profiles
- Class 2 Power Output
- Power used : +12V from automotive cigar lighter power
- Integrated with echo cancel
- Built in speaker and microphone
- Support Multiple pair.(Up to Bluetooth phone can be paired)
- Size: 152mmx58mmx32mm
- Weight:70g

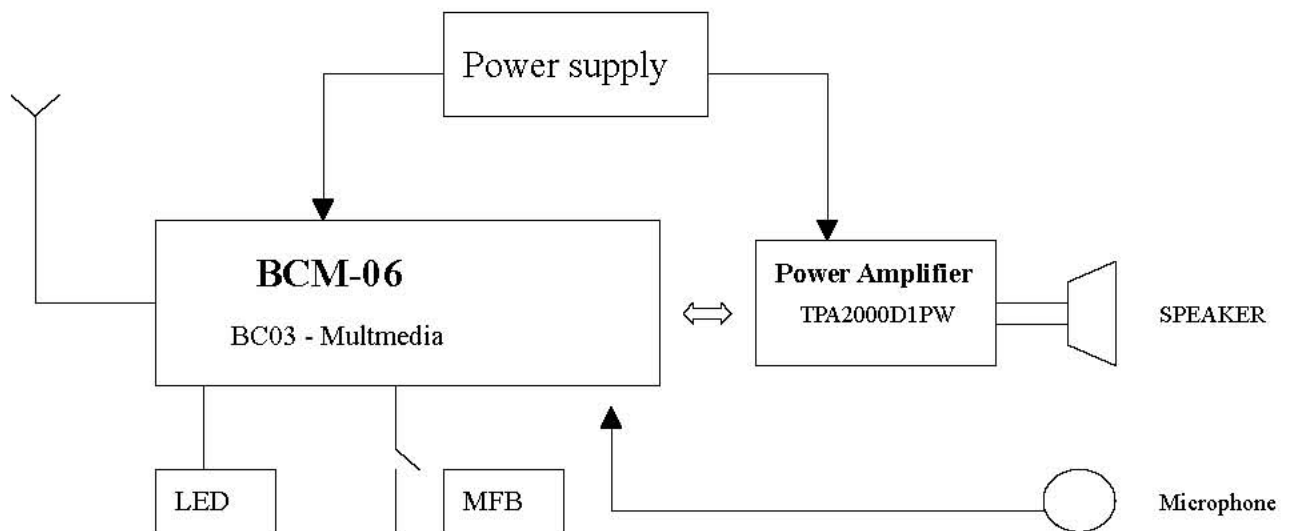
4. Button Functionality

Function Key Definition	
Function Key(MFB)	Power on/off Pairing Placing Call (Voice Dial / Last No. Redial) Answering Call End Call Reject Call
Passkey Code	Fixed Passkey Code : 9999

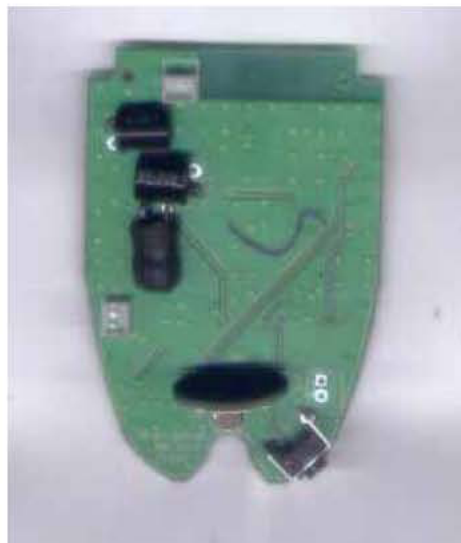
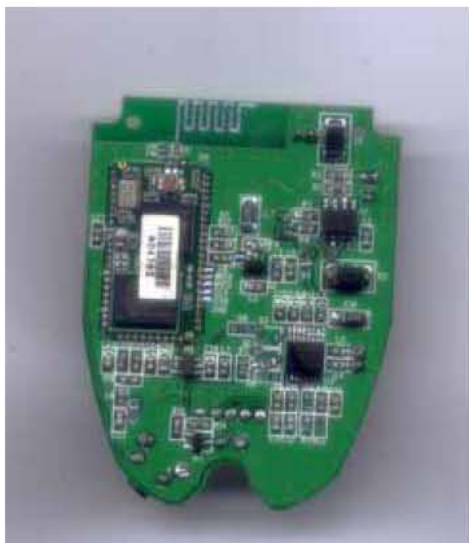
4. Appearance



5. System Architecture



6. PCB Layout



7. Operation Procedure

7.1 Power On

Function	Operation
Power On	1.1 The car kit starts automatically when the ignition (power) is turned on. 1.2 Under OFF mode, Press “MFB” Button 3 seconds

7.2 Pairing

Function	Operation
Pairing	1.1 First set this unit under OFF mode.(To enter into OFF mode, press the “MFB” Button for 3 seconds until LED is off.) 1.3 Press “MFB” Button for 6 seconds until green LED is on.
	2.Perform a device discovery from the phone.
	3.Press the “YES” soft key on the phone
	4.Then enter the passkey “9999”, and then “OK” to pair the car kit with the phone.

7.3 Placing call

Function	Operation
Using Voice Activation	1. Shortly press “MFB” Button 2. Say the voice tag name
Re-dialling	Press the “MFB” Button twice within 1.2 sec. to recall the last number dialled

7.4 Answering Call

Function	Operation
End Call	Press the “MFB” Button once during incoming Call

7.5 End Call

Function	Operation
Answer Call	Press the “MFB” Button once during going call.

7.6 Reject Call

Function	Operation
Power Off	Press and hold “MFB” Button for 3 sec during incoming call.

7.7 Power Off

Function	Operation
Power Off	Press and hold “MFB” Button for 3 sec. When beep sound is heard, release the button and the car kit will enter idle mode.

The term “IC:” before the radio certification number only signifies that Industry Canada Technical specifications were met.

Operation is subject to the following two conditions: (1) this device may not cause interference, and (2) this device must accept any interference, including interference that may cause undesired operation of the device.

Notice : The changes or modifications not expressly approved by the party responsible for compliance could void the user's authority to operate the equipment.

IMPORTANT NOTE: To comply with the FCC RF exposure compliance requirements, no change to the antenna or the device is permitted. Any change to the antenna or the device could result in the device exceeding the RF exposure requirements and void user's authority to operate the device.

THIS DEVICE COMPLIES WITH PART 15 OF THE FCC RULES. OPERATIONS IS SUBJECT TO THE FOLLOWING TWO CONDITIONS: (1) THIS DEVICE MAY NOT CAUSE HARMFUL INTERFERENCE AND (2) THIS DEVICE MUST ACCEPT ANY INTERFERENCE RECEIVED, INCLUDING INTERFEERENCE THAT MAY CAUSE UNDESRIED OPERATION