

Table of contents

Safety precautions	3
Product features	5
Packing contents	6
Packing contents	6
Names of parts	7
Connection to PC	8
Minimum requirements on PC deployment	8
Remarks	8
Application of USB	9
How to install windows98/SE device driver	10
Disconnection from PC	14
Download LDB	15
Download LDB (auto search)	18
Download LDB (manual search)	20

Product formatting	24
How to use the product	25
Preparation before operation	25
Different modes appeared on LCD window	26
Functions of keys	28
Music mode	35
Voice mode	35
FM mode	36
Setting mode	38
Brief description of menu function	39
Erase files	44
Firmware update	46
Product specifications	48
Trouble shooting	49

Safety precautions

- Do not drop or impact the unit. It may cause malfunctions.



- Do not press too hard on the transparent plastic cover of the LCD Screen. Pressing too hard may break the covering.



- Do not press too hard on the keypad.



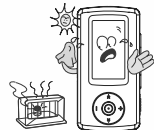
- Do not place the unit close to credit cards and other magnetic cards. The unit can damage those cards.



- Refrain from using the earphone when you are biking or driving or walking (especially when crossing the street.) They pose safety hazards and in some areas are illegal.



- Avoid direct exposure to the sunlight. Avoid placing the unit near heat source or very hot places.



- Use soft fabrics to clean the unit. Do not use solvent, benzaldehyde or painting thinner.



- Listening too long at a loud volume can cause serious hearing problems. Doctors suggest to mind your hearing. When you find problem with your ears, keep the volume down or do not use the product.



- Do not touch the liquid leakage from the LCD Screen. It may cause skin irritation. When the liquid gets into your eyes or contacts with your skin, consult your doctor immediately.



Product features

- Digital format music play
- USB2.0
- Supporting LDB display and ID3
- LDB downloading (LDB)
- LDB edit
- SRS WOW sound effect
- Navigation function (file holder auto search)
- EQ and user EQ setting
- Section repeat (A-B)
- Multiple repeat play
- FM auto search and record
- OLED screen display (double color)
- Sleep mode
- Check of residual space of memory
- LCD Graphic display
- Supporting movable memory of large capacity
- Firmware upgrade

Packing contents

Packing contents

MP3



Earphone



Installation disc



Strap



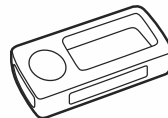
Operation manual



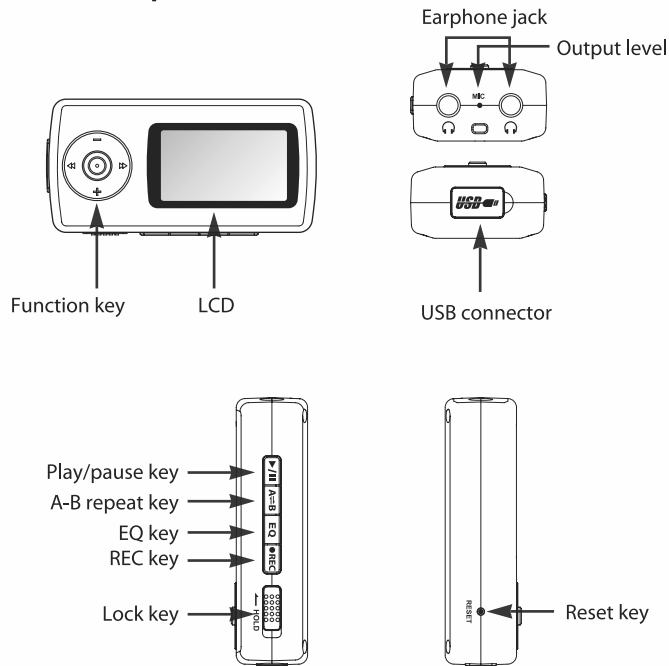
USB adapter line



Clear bag



Names of parts



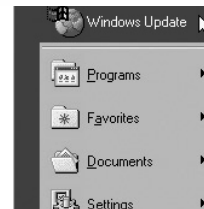
Connection to PC

Minimum requirements on PC deployment

- Pentium 133MHz or above
- Windows 98SE/ME 2000/XP
- 20 M memory or above
- CD-ROM driver
- USB port

Remarks:

- It is required to install the affiliated to the product for USB connection for Windows 98SE users.
- If USB may not run at Windows 98SE/ME/2000 /XP system, please try to update your Windows system.



Hint:

- To update Windows: It is available to select [Start]-[Windows upgrade]

Remarks:

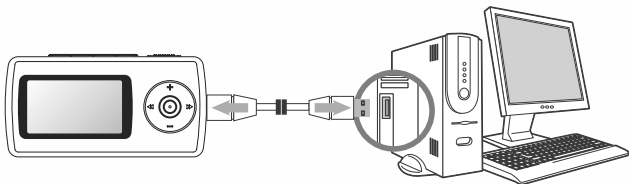
- Please restart the computer if it is required to carry out software installation for Windows 98SE/ME.

■ Application of USB

▷ Connection of USB

Use USB connection line to connect PC and MP3.

1. Connect PC at power OFF mode or at power ON mode, using as a movable disc and charging directly the player Li-ion battery.



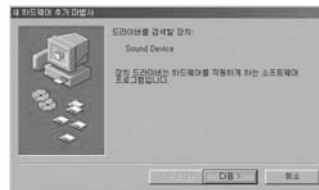
2. It is available to charge the battery fully in 4-5 hours when the battery is completely discharged.

Hint:

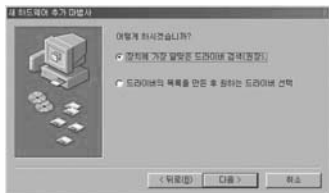
- Manual installation is required for the users of Windows 98.
- If the equipment is not certified, please visit www.windowsupdatemicrosoft.com to download new edition service software package, or to carry out virus check for the computer.

- The specific installation depends on type of computer or system environment.
- Please consult our service center or the shop you purchased your product if there is any problem in the installation.
- Please restart the computer or check USB connection line for connection if the installation problem or error has not yet been solved for the USB driver.

▷ How to install Windows 98/SE Device Driver



1. Driver for installation of USB device will be sprung out automatically after the system is finished, go on to click "Next step".



2. click "Next step" on the Add New Hardware Wizard window as described in the picture.



3. When the message,What would you like Windows to do, appears,click Search for the best driver for your device and click Next.



4. Select "CD-ROM Drive" for the location of the driver and click "Next".



5. When installation is complete, click "finish".



6. Select Digital Audio Player in the Device Manager and right click on the device for "Properties".



7. When the driver installation is complete, a "Removable Drive" icon appears.

▷ Features of movable disc

- The operation of the product is just the same as the movable disc when it is connected to the PC.
- As shown in the above diagram, it is available to use file holder function to establish multiple file holders required. It is also available for you to save your files in the file holder and to add with prefix in front of it so that the product will play in the required order.



■ Disconnection from PC

To disconnect the product from PC, it is required to click "Safely delete hardware" icon and to confirm the delete.

Remarks: _____

- Please do not disconnect the product from PC directly, least system failure may be resulted.



To connect

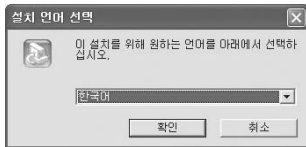
■ Download LDB

The function of download LDB may facilitate the users to add LDB for the source track. The operation is simple to download LDB from data bank using LDB software.

▷ Setting of LDB management software



- Insert the installation CD at the PC driver and run the installation driver of LDB management software.



- select installs the language.



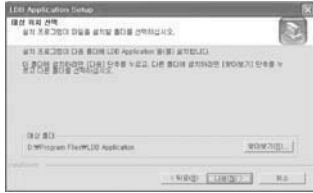
- After select language, Click "OK" setup is now in progress.



- Click "Next setp" at installation guide.



- Please read carefully the terms and conditions of admission for software application and select "Yes" to confirm permission.



- Select the installation location of program and click "Next step".



- Select file holder for program and click "Next step".



- Installation is in progress.



- Click "Finish" after completing the installation.



- The above icon will appear on the desktop after successful installation.

■ Download LDB (auto search)

The function of download V5 LDB may facilitate the users to add LDB for the source track. The operation is simple to download LDB from data bank using LDB software. The steps are given below:

1. Connect MP3and PC



2. As shown in the above picture, excite the LDB management program.



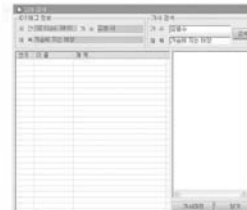
3. Select files and select "Enter LDB" at the top of menu column.
4. Click "OK" to complete the operation after successfully inserting the LDB.
5. After successfully inserting the LDB, "EPM-300" will appear on the panel.



Hint: _____

- LDB supports LDB search of MP3 and WMA.

■ Download LDB (manual search).



1. Please select file and click "Search LDB" if there is no result for the auto search.
2. Enter name of singer and the name of track in the searching window and click "Check".



LDB edit

If the data bank of LDB can not meet your requirements and you prefer to enter LDB manually, or to match the track and to edit the LDB further, please use the edit tools.



3. The management software will search automatically LDB in the LDB data bank and select the LDB required. Then, click "LDB icon".

1. Select files at the top of menu column and select "Edit LDB".



2. Select "TEXT edit".



3. Click "Confirm" after entering all the LDB s in the text block.



4. Carry out edit for the LDB sentered (for operation, please refer to "Setting detail contents"). It is shown in the left picture after the edit is completed.



5. Click "Track Iden." to confirm completion.

Hint :

- LDB is the registered trademark of Taylor Technology Co. Ltd. It is available to download the LDB editor from the web site: www.noontang.com. if it is required to edit the LDB .
- To add edited text for LYRIC LDB, the corresponding LDB will be generated by using "Noontang LDB editor".

■ Product formatting

Formatting the product following the following guide.



1. Click "Start" to activate formatting.



Hint :

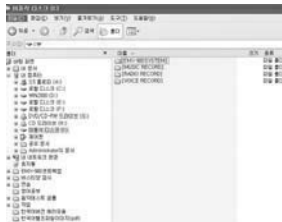
- Please confirm that no NTFS format is used, least failure may be resulted in the product.
- Please do not carry out special setting for the product formatting in Windows 98.

How to use the product

■ Preparation before operation

To obtain best performance of the product, please pay attention to the following contents:

1. The music may be enjoyed in sequence if digit prefix is applied at the file name.
2. The USB2.0 [480Mbps] function can only be effective when the PC supports USB2.0 card.

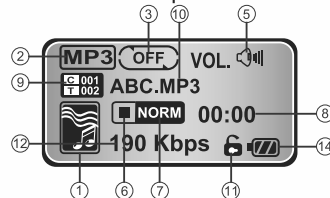


Hint:

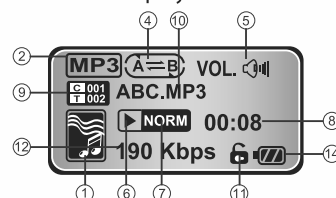
- To facilitate the track management, the file names may be added with prefix (01, 02 and 03, etc.). To facilitate the track management, the file names may be added with prefix (01, 02 and 03, etc.).

■ Different modes appeared on LCD window

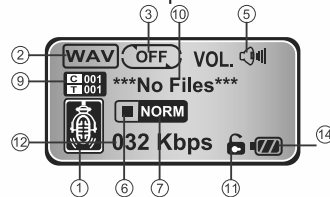
▷ Music stop



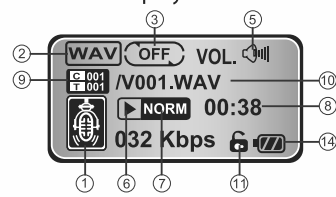
▷ Music play



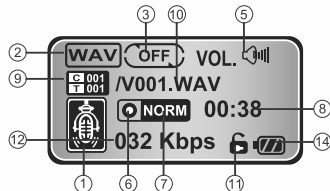
▷ Voice stop



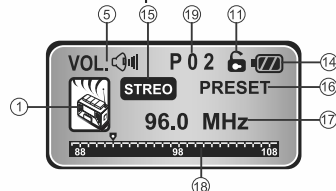
▷ Voice play



▷ Voice record

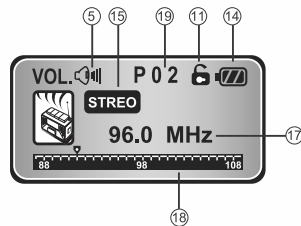


▷ Radio preset

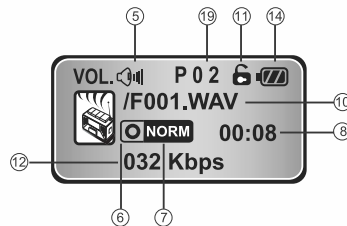


■ Different modes appeared on LCD window

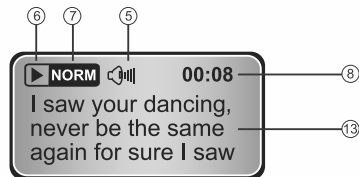
▷ FM Radio Frequency



▷ FM record



▷ LDB play



No	General description	No	General description
1	Function mode	2	MP3/WMA/ASF/OGG/WAV
3	Repeat play	4	Sectional repeat
5	Volume level	6	Stop/play/record/pause
7	EQ/SRS WOW	8	Play/record time
9	File number	10	File name
11	Lock	12	Bit rate
13	LDB indication	14	Battery capacity
15	Mono/stereo	16	Frequency/preset
17	Frequency	18	Frequency status
19	Channel		

■ Functions of keys

This product features Music, Voice, Radio.

For each mode, the following table explains how to operate the buttons.

▷ Music stop

Key	Function	Press shortly	Press and hold for a while
Play	▶/II	Play/pause	Power off
A-B repeat	A ◀B	N/A	N/A
EQ key	EQ	EQ select	N/A
REC key	REC	N/A	Record
Function key, center pressed slightly	⊙	Operation	Menu window
Function key, press rightward	▶▶	Next file	
Function key, press leftward	◀◀	Previous file	
Function key, press upward	+	Volume increase	
Function key, press downward	—	Volume decrease	

▷ Music play

Key	Function	Press shortly	Press and hold for a while
Play	▶/II	Play/pause	Power off
A-B repeat	A ◀B	Section repeat	N/A
EQ key	EQ	EQ select	N/A
REC key	REC	N/A	N/A
Function key, center pressed slightly	⊙	Operation	Menu window
Function key, press rightward	▶▶	Next file	Speed search
Function key, press leftward	◀◀	Previous file	Speed search
Function key, press upward	+	Volume increase	
Function key, press downward	—	Volume decrease	

▷ Voice stop

Key	Function	Press shortly	Press and hold for a while
Play/stop	▶/II	Play/pause	Power off
A-B repeat	A ◀B	N/A	N/A
EQ key	EQ	N/A	N/A
REC key	REC	Record/pause record	N/A
Function key, center pressed slightly	⊙	Stop record/pause record	Music mode
Function key, press rightward	▶▶	Next file	
Function key, press leftward	◀◀	Previous file	
Function key, press upward	+	Volume increase	
Function key, press downward	—	Volume decrease	

▷ Voice play mode

Key	Function	Press shortly	Press and hold for a while
Play/stop	▶/II	Play/pause	Power off
A-B repeat	A ◀B	Sectional repeat	N/A
EQ key	EQ	EQ select	N/A
REC key	REC	Record/pause record	N/A
Function key, center pressed slightly	⊙	Stop record/menu window	Music mode
Function key, press rightward	▶▶	Next file	
Function key, press leftward	◀◀	Previous file	
Function key, press upward	+	Volume increase	
Function key, press downward	—	Volume decrease	

▷ FM radio preset mode

Key	Function	Press shortly	Press and hold for a while
Play/stop	▶/II	FM ON/OFF	Power off
A-B repeat	A↔B	Previous channel	N/A
EQ key	EQ	Save channel	N/A
REC key	REC	FM record	N/A
Function key, center pressed slightly	⊙	Stop record/menu window	Music mode
Function key, press rightward	▶▶	Next frequency	Auto search
Function key, press leftward	◀◀	Previous frequency	Auto search
Function key, press upward	+	Volume increase	
Function key, press downward	-	Volume decrease	

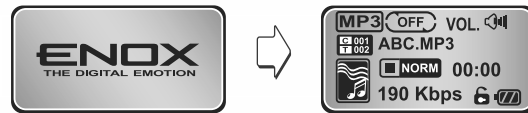
▷ FM radio frequency

Key	Function	Press shortly	Press and hold for a while
Play/stop	▶/II	FM ON/OFF	Power off
A-B repeat	A↔B	Reset mode	N/A
EQ key	EQ	Save channel	N/A
REC key	REC	FM record	N/A
Function key, center pressed slightly	⊙	Stop record/menu window	Music mode
Function key, press rightward	▶▶	Next frequency	Search
Function key, press leftward	◀◀	Previous frequency	Search
Function key, press upward	+	Volume increase	
Function key, press downward	-	Volume decrease	

■ Basic operation

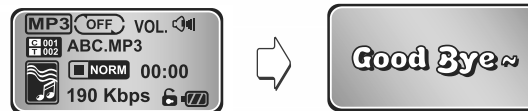
▷ Power on

Press shortly play/stop key to turn on the player.



▷ Power off

Press and hold on play/stop key for 3 seconds.



▷ Change over mode (music/voice/radio/setting/delete/edition information/exit)

Press and hold on for a long while the 5-digit key until mode window appears. Press left/right to select music, voice, radio setting, delete and edition information, exit from one of the modes, then, press the 5-digit key to confirm the selected mode.

	Action description	Function
Press leftward	Within 5s of play	Previous file
	After 5s of play	Play the track from the beginning
Press rightward	Play continuously	Play next file

▷ FF/REW

At play mode, press leftward/rightward and press and hold for a while the function key.

▷ Operation

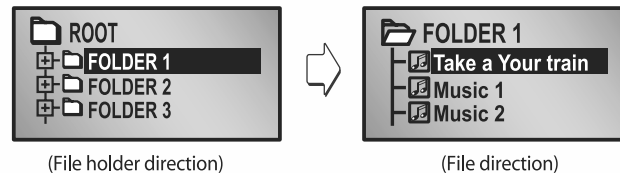
◆ File holder operation

At music mode, press the function key at the center position until file entry appears. Then, move the function key to browse files and file holders. The operation may be carried out during play or stop modes.

Key	Location	File holder	File
Move leftward the function key		Previous level file holder	
Move leftward or rightward		Next level file holder	
Previous file in the file holder			Previous file in the file holder
Press downward the function key			Next file in the file holder
Press the function key at the center			Play the selected file

Hint :

- The operation mode only functions at the music mode.



▷ Sectional repeat

1. Press A-B repeat key at the location required to play repeatedly at play mode.(A↺ will be indicated)
2. Press A-B repeat key once more at the location required to end the repeat play at play mode.(↵ B will be indicated)
3. A↺B appears, and the section will be repeated again and again.
4. The repeat mode will be stopped, when pressing the same key once more. In this case, normal play will be recovered and there will be no more icon indication.

- ▷ **EQ setting** : Press shortly EQ/mode key to carry out EQ setting selection. (NORMAL/ROCK/SAZZ/CLASS/POP/USER/SRS WOW)

■ MUSIC MODE

▷ Enter music mode

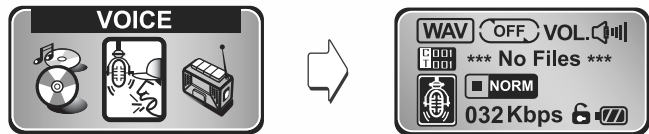
Press function key to enter mode window, press function key leftward/rightward to select music mode and then press function key to enter music mode.



■ VOICE MODE

▷ Enter voice mode

Press function key to enter mode window, press function key leftward/rightward to select voice mode and then press function key to enter voice mode.



▷ VOICE RECORDING

Start record: Press REC key.
Stop record: Press function key.
Pause record: Press REC key.

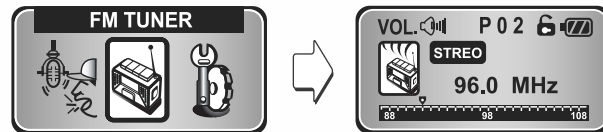
Hint:

The record file is saved in the record file holder.

■ FM MODE

▷ Enter FM mode

Press function key to enter mode window, press function key leftward/rightward to select FM mode and then press function key to enter FM mode.



(Mode window)

(FM mode)

▷ Enter FREQUENCY/PRE-TUNING MODE

At FM mode, press A-B key to change over to the pre-tuning mode.

Hint :

- The received area will determine automatically the mono or stereo channel.

▷ FREQUENCY

◇ To set up the desired station (frequency browse).

1. Press function key leftward/rightward slightly to increase the status bar of pre-tuning.
2. Press left or right key and then release it, then, the next available channel will appear.

◆ **To save the desired station (frequency browse)**

Press EQ key to save when a desired station is turned.

Hint :

- The pre-tuning mode will be selected after the channel is saved.

▷ **PRESET MODE**

◆ **Auto browse**

If there is no station saved,it will search and save automatically.

Hint :

- Please confirm that earphone is inserted at station search.

◆ **Move between the pre-tune channels.**

Press A-B key to move between the pre-tune channels.

▷ **Radio record**

Record/pause record: Press REC key.

Stop record: Press function key.



(Record from FM radio)

Hint :

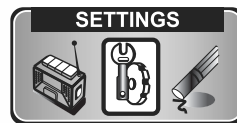
- The record files are saved in the file holder for radio record,and are available in voice mode.

◆ **Play record file**

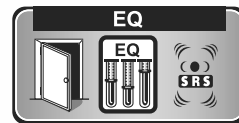
Select music mode with function key.

■ SETTING MODE

▷ **Enter mode window and select SETTINGS mode.**



(Mode window)



(initial picture of SETTINGS mode)

▷ **Change over SETTINGS mode menu**

At the SETTINGS mode, press function key leftward/rightward to enter the desired menu and to enter the menu when pressing the key.



EQ



SRS WOW



PLAYMODE



CONTRAST



POWER SAVING



RECORD



LANGUAGE SELECT



LDB SELECT



EXIT

Hint :

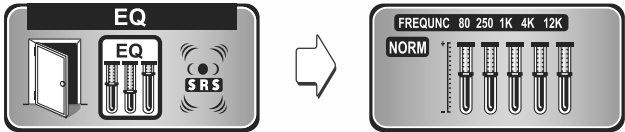
- The setting value or the changed over function will be automatically saved when exiting from the menu window.

■ Brief description of menu function

Menu	Setting	Brief description
EQ	NORMAL/ROCK/JAZZ/CLASS/POP/USER	USER EQ setting
SRS WOW	WOW TRUBAS SPEAKER SIZE	3D effect setting Setting TRUBAS Deliver different frequencies according to the volume.
PLAY MODE	Normal/Repeat Track/Repeat All/Shuffle/Shuffle repeat	Repeat play function setting
CONTRAST	Level 0~10	LCD contrast
POWER SAVINGS	Desible/1 Min/2Min/5Min/10Min	Auto timer OFF setting
RECORD SETTING	Source	VOICE, FM setting
	Encoder	ENCODER TYPE setting
	Channels	STEREO, MONO setting
	DEVICES	Not in use
	RATE	SAMPLING Frequency Setup
	Bitrate	Not in use
	MODE	Not in use
LANGUAGE SELECT	English/Japanese/Simplified chinese/Traditional chinese/Korea/Russian	Setting language
LDB SELECT	LDB OFF/LDB ON	LDB display function setting

▷ EQ

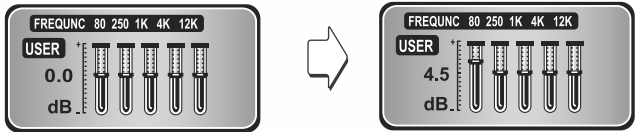
It is available for you to select EQ mode as you like.



▷ User EQ

It is available for you to set up directly the frequency band of equalizer you like.

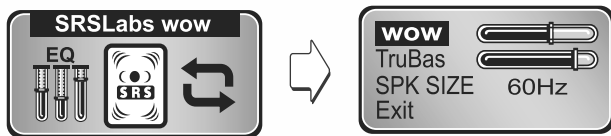
Each EQ includes 5 frequency bands,of which each may be adjusted in the range of +10dB~-10dB.



The function key is used for setting.

▷ SRS WOW

Setting values for SRS, TruBas, SPEAKER SIZE and select sound effect you like.



- SRS : Setting 3D effect.
- TruBas : To enhance bass function.
- SPEAKER SIZE : Select the item according to the output.

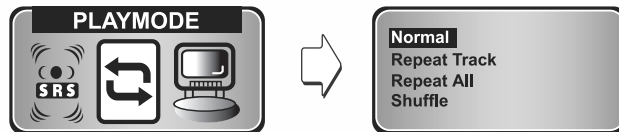
Speaker magnitude	
40	small earphone
60	Normal earphone
100	Small size speaker
Over 100	Other speaker

Hint :

- SRS is the trademark of SRS Labss. Stock Co.Ltd.
- The technique has already been registered by SRS Labs.

▷ PLAY MODE

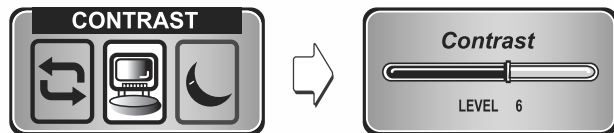
The repeat paly functions include Repeat Track/Repeat All/Shuffle/Shuffle Repeat /Normal.



NORMAL	Play in sequence all the music at the present track.
REPEAT TRACK	Repeat play single tack.
REPEAT ALL	Repeat play in sequence all the music at the present track.
SHUFFLE	Play not in sequence all the music at the present track.
SHUFFLE ALL	Repeat play not in sequence all the music at the present track

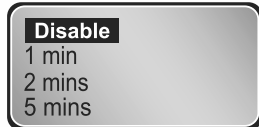
▷ CONTRAST

Setting backlight contrast



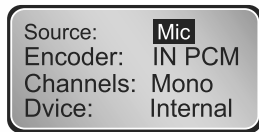
▷ POWER SAVINGS

Auto power OFF function when no operation is carried out at stop mode.



▷ RECORD SETTINGS

Setting record sound quality.



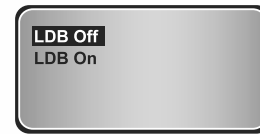
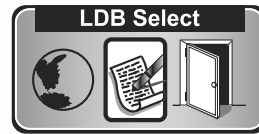
▷ Language Select

Change the menu language.



▷ LDB Select

Select for LDB indication.



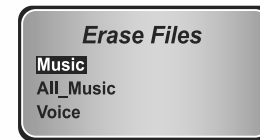
▷ Exit

Exit from the present menu picture.



■ Erase files

- ▷ Press and hold for a while the function mode window and select EARSE FILES.



- ▷ Erase file entry:Single music file,all music files,single record file,all record files.



Hint :

- Please erase files at stop mode.
- The erased files can not be recovered, please be careful.

■ **ABOUT**

It is available to check the software edition and the remained memory space.



■ **EXIT**

Exit from the present menu picture.



■ **FIRMWARE UPGRADE**

It is available to carry out Firmware update when there is a new edition Firmware up-streamed in the network or it is not available to run MP3 Player normally.

Remarks :

- Failure may occur to the MP3 Player if it is disconnected from PC when Firmware updating.
 - Please confirm the new Firmware edition from the web site of the company.
1. Use USB connection line to connect PC and MP3 Player.
 2. Run[Start] → [Audio Player] → [MP3 Player] → [Firmware Update].



3. Select 'Auto software install' when picture of driver installation appears and click 'go on' when the computer system is XP.



4. The following window will appear if the driver installation is completed.



5. Delete MP3 Player in accordance with 'delete MP3 Player safely' in the operation manual after the Firmware is updated.

Hint :

- Please do not disconnect the PC MP3 Player during updating.
- Prior to Firmware updating, please save important contents in the MP3 Player to the computer .
- It is available to confirm the Firmware at the start picture and

Product specifications

Type	EPM-300
Memory	128MB/256MB/512MB/1GB
File format supported	MPEG 1/2/2.5 Layer 3 (8~320kbps,VBR)
	WMA (5~320kbps) ASF,WAV
Battery	Built-in Li-ion battery(3.7V)
Charging	USB port charging directly
USB	USB2.0 (Full speed)
Play time	8 hours
LCD	OLED double color
Dimensions	71x28x16mm
Weight	35g
Signal/Noise ratio	90dB
Earphone output	15mW + 15mW (16 Ω)
FM frequency range	87.5~108MHz
Record	Voice/FM
Operation system	Windows 98SE / ME / 2000 / XP/MAC *

Hint :

- It is not available preliminarily to provide installation software for MAC users.

TROUBLE SHOOTING

- **Not available to turn on the power**

Check if the battery is out of capacity.

- **No sound**

Check if the volume is adjusted to zero.

Check if the earphone connection is fail.

- **Keys malfunction**

Check if the lock key is at "ON" location.

- **FM reception is fail.**

Some of the radio signal is hard to receive at some edge areas of a poor receive effect.

Check if the earphone is at plugged in status (the earphone of the player is two fold the antenna).

- **The system runs slowly.**

The starting speed will be much slower if too much files in the system.

- **"No Marked Files" or "No Marked Folder" appears when player key is pressed and it is not available to play normally.**

The starting speed will be much slower if too much files in the system.

MEMO

FCC RF INTERFERENCE STATEMENT

NOTE :

This equipment has been tested and found to comply with the limits for a Class B digital device, pursuant to Part 15 of the FCC Rules.

These limits are designed to provide reasonable protection against harmful interference in a residential installation.

This equipment generates, uses and can radiate radio frequency energy and, if not installed and used in accordance with the instructions, may cause harmful interference to radio communications.

However, there is no guarantee that interference will not occur in a particular installation.

If this equipment does cause harmful interference to radio or television reception which can be determined by turning the equipment off and on, the user is encouraged to try to correct the interference by one or more of the following measures.

- Reorient or relocate the receiving antenna.
- Increase the separation between the equipment and receiver.
- Connect the equipment into an outlet on a circuit different from that to which the receiver is connected.

- Consult the dealer or an experienced radio, TV technical for help.
- Only shielded interface cable should be used.

Finally, any changes or modifications to the equipment by the user not expressly approved by the grantee or manufacturer could void the users authority to operate such equipment.

THIS DEVICE COMPLIES WITH PART 15 OF THE FCC RULES. OPERATION IS SUBJECT TO THE FOLLOWING TWO CONDITIONS: (1) THIS DEVICE MAY NOT CAUSE HARMFUL INTERFERENCE, AND (2) THIS DEVICE MUST ACCEPT ANY INTERFERENCE RECEIVED, INCLUDING INTERFERENCE THAT MAY CAUSE UNDESIRE OPERATION.