

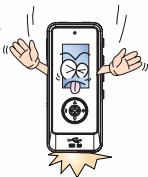
Contents

Safety Precaution	3
Product Features	5
Package Contents	6
In the package	6
Name of Each Part	7
How to expand USB Jack	8
Connecting to the PC	9
Minimum PC Requirements	9
Note	9
Using USB	10
Removing the product from a PC	15
Downloading lyrics.	16
Simple Lyric Editing (Auto Search)	19
Simple Lyric Editing (Manual Search)	21
To format the product	25

Using the product	26
Preparation	26
LCD Window showing different modes.	27
Button Function	29
Basic Operation	33
MUSIC MODE	40
VIOCE MODE	41
FM MODE	42
LINE-IN MODE	45
USB MODE	47
MENU Configuration	48
FIRMWARE Upgrade	69
Product Specification	70
Troubleshoot Checklist	71
Warranty Certificate	72

Safety Precaution

- Do not drop or impact the unit. It may cause malfunctions.



- Do not press too hard on the transparent plastic cover of the LCD window. Pressing too hard may break the covering.



- Do not press too hard on the keypad.



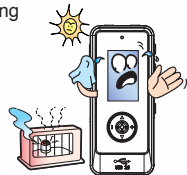
- Do not place the unit close to cash cards and other cards with magnetic strips. The unit can damage those cards.



- Refrain from using the earphone when you are biking or driving or walking (especially when crossing the street.) They pose safety hazards and in some areas are illegal.



- Avoid direct exposure to the sunlight. Avoid placing near heat sources or very hot places.



- Use soft fabrics to clean the unit. Do not use solvent, benzyl, or paint thinner.



- Listening too long at a loud volume can cause serious hearing problems. Doctors warn of the hearing hazard. When you notice problem in your ears, keep the volume down or do not use the product.



- Do not touch the leak from the LCD window. It may cause skin irritation. When the leak gets in your eyes or you have a skin contact with the leak, consult your doctor immediately.



Product Features

- Playback of music in digital format
- USB 2.0
- Lyric Display and ID3 Tag Support
- Lyrics Download (LDB)
- Lyrics Editor
- SRS WOW
- Navigation (Auto Folder Search)
- Equalizer and User EQ Setting
- Repeat Section
- Repeat
- Area Selection Mode (FM Radio)
- FM Auto Scan and Recording
- 2 Color(Blue, Yellow)
- Sleep
- Remaining Memory Level
- OLED(128 x 64)
- Removable Mass Storage Supported
- Power Save
- Firmware Upgradeable
- MP3 Direct Encoding

Package Contents

In the package

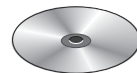
Product Body



Necklace-type Earphone



Installation CD



Neck Strap



Manual



USB Cable



Connecting Cable



OPTION

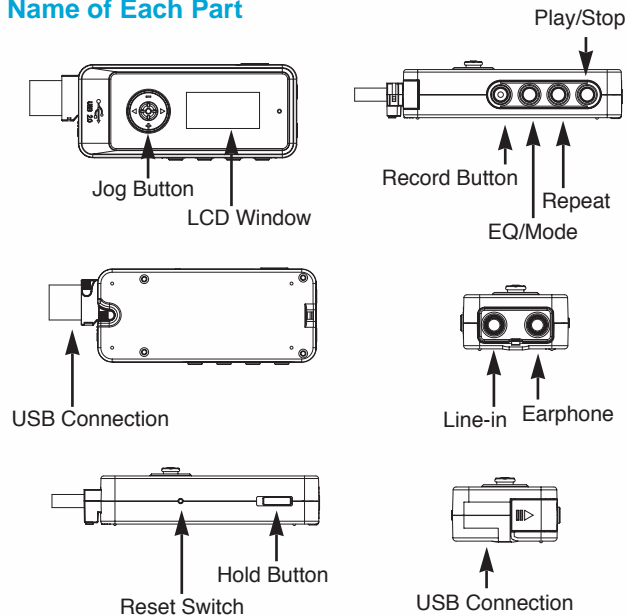
Armband



Carrying Case

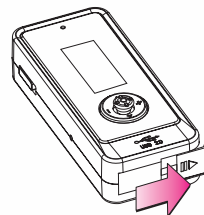


Name of Each Part

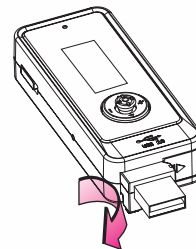


How to expand USB Jack

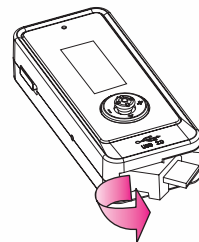
1 USB cover open



2 USB cover pull



3 USB close



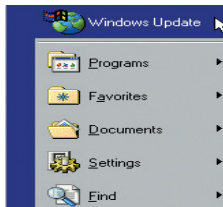
Connecting to a PC

■ Minimum PC Requirements

- Pentium 133MHz or better
- Windows 98SE/ME/2000/XP
- 20MB or more storage space
- A CD-ROM drive
- A USB port

■ Note

- For the Windows 98SE users, install the provided software for a USB connection.
- When USB is not working for any of Windows 98SE/ME/2000/XP systems, try to fix the problem by updating your Windows.



TP:

- Windows Update: Select [Start] -> [Windows Update]

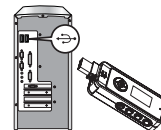
Note:

- Restart your computer when the software installation is for Windows 98SE/ME.

■ Using USB

▷ USB Connection

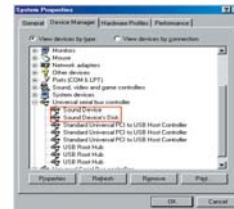
Open the USB cover of the product and insert the right end of the cable.



▷ Checking the USB driver

● Windows 98SE:

My Computer → Properties → Device Manager → USB Controller → Digital Audio Player Or, Control Panel → System → Device Manager → USB Controller → Digital Audio Player



● Windows 2000/ME :

My Computer → Properties → Device Manager → USB Controller → Digital Audio Player Or, Control Panel → System → Device Manager → USB Controller → Digital Audio Player

● Windows XP(Home, Professional):

Start → My Computer → System → Device Manager →

USB Controller → Digital Audio Player Or, Control Panel → System and Maintenance → System → Hardware → Device Manager → USB Controller → Digital Audio Player

TP:

- You should install the driver manually when the USB driver is not installed as described in the picture above, except for Windows 98.
- Manual installation is required for the Windows 98 users.
- When the device is not recognized, please go to www.windowsupdate.microsoft.com for a new version of Service Pack, or conduct a virus check for your computer.
- The type of your computer or your system environment may require different ways of installation.
- In that case, consult our service center or the shop you made the purchase from to inquire about any installation difficulties you might have.
- Start your system again or check the cable connection when the problem or error with the USB driver installation persists.

► How to install the driver for Windows 98SE



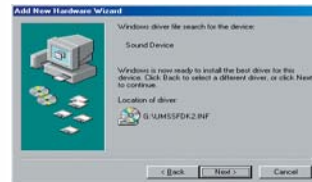
- 1 Insert the provided installation CD in the CD ROM and connect the player to your PC.



- 2 Click "Next" on the Add New Hardware Wizard window as described in the picture.



- 3 When the message, What would you like Windows to do, appears, click Search for the best driver for your device and click Next.



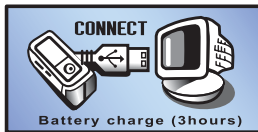
- 4 Select "CD-ROM Drive" for the location of the driver and click "Next."

■ Removing the product from a PC

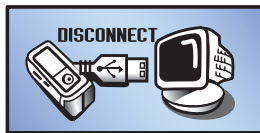
To remove the product from a PC, click on “Unplug/eject” icon on the taskbar and wait until a message confirming your action appears.

Note :

- Disconnecting the product without using “Unplug/eject” may cause malfunctions.



[Connection established]



[Product unplugged]

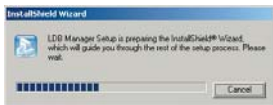
■ Downloading lyrics.

Lyrics Download feature of EMX-900 enables users to add lyrics to source tracks. With the help of LDB software to download from lyrics database, no hassle is needed.

▷ LDB Manager Program Setup



- Insert the provided LDB Manager Program CD in a PC CD ROM, and the above Setup wizard should be in progress.
- After successful file extraction, the language select box will appear.



- Select one from the pull-down list and click “OK.”



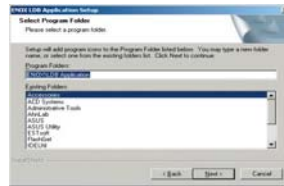
- Click on “Next” in the Install Shield Wizard.



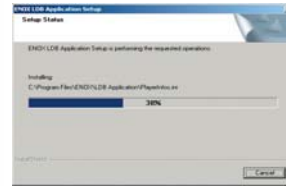
- Please read carefully the license terms and conditions and confirm your agreement by choosing “Yes.”



- Choose the target location of the program installation and click Next.



- Select a program folder and click on the “Next” button.
By default, LDB Manager Program is installed into Program Folder of C Drive of your computer.



- Setup is now in progress.



- Choose “Finish” when installation is complete.



- Check if the above icon appears after the successful installation.

■ Simple Lyric Editing (Auto Search)

Downloading Lyrics features of EMX-900 enables users to add lyrics to source tracks. With the help of LDB software to download from lyrics database, no hassle is needed.

- 1 Link EMX-900 to a PC.



- 2 Activate Lyrics Management as described in the picture above.



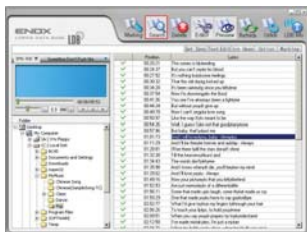
- 3 Select a file and choose Marking from the top menu bar.
- 4 After the successful lyric insertion, click “OK” to complete the operation.
- 5 After the successful lyric insertion, ‘EMX-900’ is displayed on the panel.

TIP:

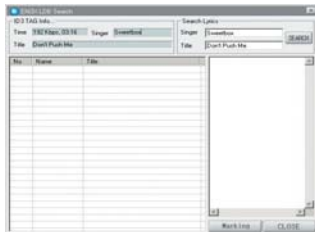
- You can insert lyrics to multiple files by this operation.
- LDB supports lyrics search for MP3,WMA and OGG .

Simple Lyric Editing (Manual Search)

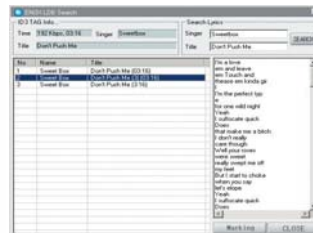
When corresponding lyrics don't appear, refer to the download guide as described below.



- 1 In case of no automatic search result, select the file and choose Search.



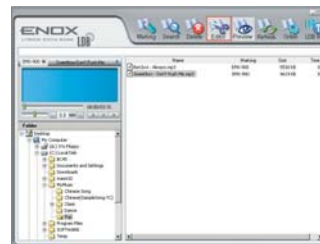
- 2 Enter the artist's name and son's title in the Search window, and click on the Search button.



- 3 Look for the closest match with time information, artist and song's title. Click Marking for the match and insertion.

Lyric Editing

Use the editing tool when you want to enter lyrics manually, or for the match where the result requires further editing.



- 1 Select a file and choose Editor from the top menu bar.



- 2** Select a line from the lyrics window and edit the text. Click Marking after editing is complete.



- 3** Enter the whole lyric for the file with no match result and click on Set Sync to each text line for the time stamp. After completing the editing, click Marking.

- 4** Click on “Find” and the search result will be displayed.



- 5** Select the lyrics applicable to the track of your search. Press Marking to save it in the product.

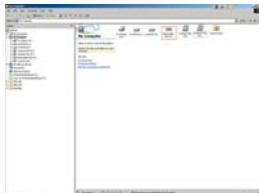
- 6** Click on “Choose a File” to select the text edited in “Noontang Lyrics Editor.” Click on the Save Lyrics button to add lyrics to the track.

TP: _____

- LDB is the registered trademark of Taylor Technology. To edit lyrics, use the lyrics editor available by www.noontang.com. Add the edited texts using “Noontang Lyrics Editor” to LDB which will produce an appropriate lyric.

Format the Product

To delete all the contents in the product, refer to the following guide.



1 Click on “Start” to begin formatting.

TP:

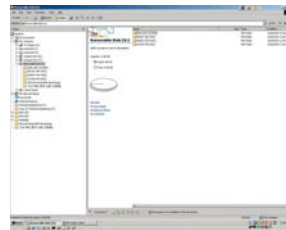
- Please be sure not to use the NTFS format, which may result in malfunction of the product.
- In Windows 98, no particular setting is necessary to format the product.

Using the product

Preparation

To optimize the performance of the product, following precautions should be considered.

- 1 Place numerical prefixes to the file names if the order of playback is preferred.
- 2 USB2.0[480Mbps] feature is available only when there is a USB2.0 card installed on your PC

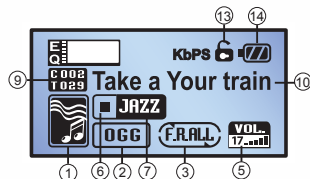


TP:

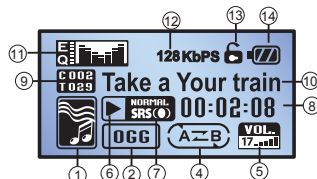
- Place numerical prefixes (01, 02, 03 and so on) to music files in the order of playback, and the lyrics management would be easier.

LCD Window showing different modes.

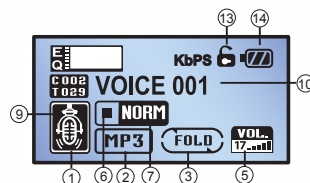
▷ MUSIC STOP



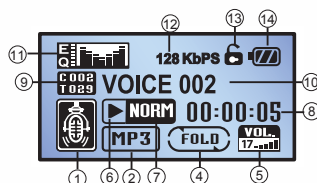
▷ MUSIC PLAYBACK



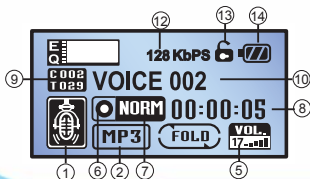
▷ VOICE STOP



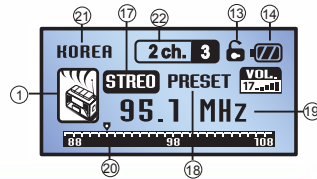
▷ VOICE PLAYBACK



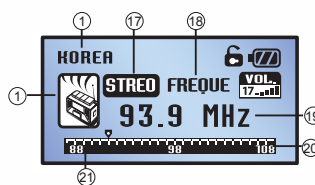
▷ VOICE RECORDING



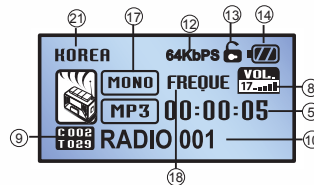
▷ RADIO PRESET



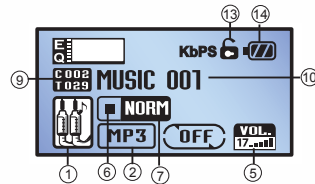
▷ RADIO FREQUENCY



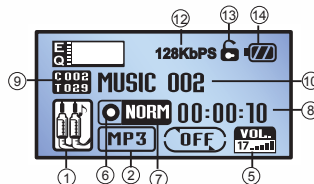
▷ FM RECORDING



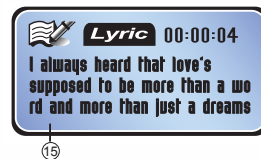
▷ Line-In RECORD READY



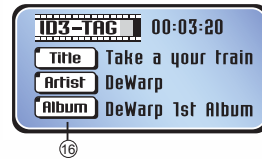
▷ Line-In RECORDING



▷ LYRIC PLAYBACK



▷ TD3-TAG PLAYBACK



No	Description	No	Description
1	Folder	2	MP3/WMA/ASF/OGG
3	Repeat Playback	4	Repeat Section
5	Volume Level	6	Stop/Playback/Record/Navigation
7	EQ/SRS WOW	8	Playback/Recording Time
9	Index #/Total number of files	10	File Name
11	Graphic EQ	12	BIT RATE
13	HOLD	14	Battery Level
15	LDB Display	16	ID 3D-TAG Display
17	MONO/STEREO	18	FREQUENCY/PRESET
19	FREQUENCY	20	FREQUENCY BAR
21	FM area selection	22	Channel

■ Button Function

This product features Music, Voice, Radio and Music Record modes. For each mode, the following table explains how to operate the buttons.

▷ Music Stop

Button	Operation	Brief Press	Hold Down
Playback	PLAY/■	Playback/Stop	Power Off
Repeat Section	A↔B	Repeat Section Options	N/A
Mode	EQ/MODE	EQ Options	Mode Window
Record	REC/II	N/A	N/A
Center JOG	⊙	Navigation	Menu Window
Right JOG	▶▶	Next File	
Left JOG	◀◀	Previous File	
UP JOG	+	Volume Increase	
Down JOG	-	Volume Decrease	

▷ Music Playback

Button	Operation	Brief Press	Hold Down
Playback	PLAY/■	Playback/Stop	Power Off
Repeat Section	A↔B	Repeat Section Options	Repeat Options
Mode	EQ/MODE	EQ Options	3D Sound
Record	REC/II	Pause	N/A
Center JOG	⊙	Navigation	Menu Window
Right JOG	▶▶	Next File	Speed Search
Left JOG	◀◀	Previous File	Speed Search
UP JOG	+	Volume Increase	
Down JOG	-	Volume Decrease	

▷ Voice Stop

Button	Operation	Brief Press	Hold Down
Playback	PLAY/■	Playback/Stop	Power Off
Repeat Section	A↔B	Repeat Options	N/A
Mode	EQ/MODE	N/A	Mode Window
Record	REC/II	Recording Pause	Start Recording
Center JOG	⊙	N/A	Menu Window
Right JOG	▶▶	Next File	
Left JOG	◀◀	Previous File	
UP JOG	+	Volume Increase	
Down JOG	-	Volume Decrease	

▷ Voice Playback Mode

Button	Operation	Brief Press	Hold Down
Playback	PLAY/■	Playback/Stop	Power Off
Repeat Section	A↔B	Repeat Section Options	Repeat Options
Mode	EQ/MODE	N/A	3D Sound
Record	REC/II	Pause	N/A
Center JOG	⊙	N/A	Menu Window
Right JOG	▶▶	Next File	
Left JOG	◀◀	Previous File	
UP JOG	+	Volume Increase	
Down JOG	-	Volume Decrease	

▷ FM Radio Preset Mode

Button	Operation	Brief Press	Hold Down
Playback	PLAY/■	Frequency Mode	Power Off
Repeat Section	A↔B	N/A	N/A
Mode	EQ/MODE	N/A	Main Mode
Record	REC/II	N/A	Start Recording
Center JOG	⊙	N/A	Menu Window
Right JOG	▶▶	Next Channel	Auto Scan
Left JOG	◀◀	Previous Channel	N/A
UP JOG	+	Volume Increase	
Down JOG	-	Volume Decrease	

▷ FM Radio Frequency

Button	Operation	Brief Press	Hold Down
Playback	PLAY/■	Preset Mode	Power Off
Repeat Section	A↔B	N/A	N/A
Mode	EQ/MODE	N/A	Main Mode
Record	REC/II	N/A	Start Recording
Center JOG	⊙	N/A	Menu Window
Right JOG	▶▶	Next Channel	Scan
Left JOG	◀◀	Previous Channel	Scan
UP JOG	+	Volume Increase	
Down JOG	-	Volume Decrease	

▷ Line-In Mode

Applicable only when Line-In cable is connected.

Button	Operation	Brief Press	Hold Down
Playback	PLAY/■	Playback/Stop	Power Off
Repeat Section	A↺B	Repeat Section Options	Repeat Options
Mode	EQ/MODE	EQ Options	3D Sound
Record	REC/II	Pause	Start Music Record
Center JOG	⊙	Navigation	Menu Window
Right JOG	▶▶	Next File	Speed Search
Left JOG	◀◀	Previous File	Speed Search
UP JOG	+	Volume Increase	
Down JOG	-	Volume Decrease	

■ Basic Operation

▷ To turn on the power

Press down on the Play button longer than 3 seconds, and the power comes on.



▷ To turn off the power.

Press down on the Play button longer than 3 seconds.



▷ To change modes (Music / Voice / Radio / Line-in / USB Connection Mode)

Hold down on the Mode button until the mode window appears. Slide the Jog button and press down on the center jog to set to one of the Music, Voice, Radio, Music Record and USB Connection modes



MUSIC



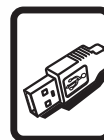
VOICE



RADIO



Line-In




USB

▷ Volume adjustment

Move the jog button up and down to set to your favorite volume level.

▷ Hold function

A function to keep the user from mistakenly pressing a button.

Setting to Hold displays a lock icon  on the panel and no other keys will work.

▷ Playback/Stop

Playback/Stop : Press down on the Play button.

Pause : Press down on the Record button

▷ To change the playing tracks

Press briefly on the left/right jog and the following occurs.

	Point of Action	Function
Left JOG	Within 5 sec. of playing	Previous File
	After 5 sec. of playing	To play from the beginning of the playing track
Right JOG	Always	To play the next file

▷ Search within a track

Move and hold the left/right jog to navigate within the track. Holding down on the jog will increase the search speed.

TP:

- Track Search speed is adjustable in FF/REW SPEED/MUSIC of the playback menu.

▷ NAVIGATION

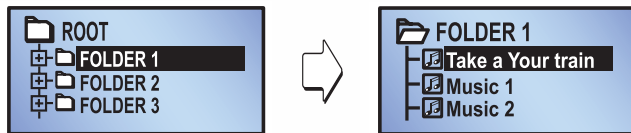
◆ To navigate folders.

In MUSIC mode, press down on the center jog button until the list of files appear and move the jog to browse files and folders. This navigation works during the playback or stop.

Button \ Location	Folder	File
Left JOG	Higher Folder/ Playback State	Into the corresponding folder
Right JOG	Lower Folder/File	Next File In A Folder/ Lower Folder
Up JOG	Previous Folder	Previous File In A Folder
Down JOG	Next Folder	Next File In A Folder
Center JOG	To play the first file in a folder	To play the selected file
Record		(File Delete)

TIP:

- During this operation, hold down on the center jog button to select and play a file, or press down briefly on the Repeat Section button to add the file to a playing list (bookmark.)
- When there are no other folders to navigate, the same control will move up and down on the existing files.
- This navigating operation works only for the MUSIC mode.



Folder Directory

File Directory

◆ To delete a file

- 1 During a standby of MUSIC mode, press down on the center jog button to navigate.
- 2 Move the jog button to select a file to delete.
- 3 Press down on the Record button, and “DELETE YES/NO” message will appear.
- 4 Move the jog button to the left or right to either YES or NO, and press down on the center jog button to select one of the choices. Selecting YES will delete the selected file.



Navigating files to delete



Confirming to delete

TIP:

- Delete function works only during a standby.
- Files deleted are final and no recovery is possible.

► Repeat Section Options

- 1 In a playback mode, press the Repeat Section button for the beginning point of the section you want to repeat.
(A↔ displayed)
- 2 Press the button again where you want the section to end.
(_B is displayed.)
- 3 A↔B Section will be repeated continuously.
- 4 The Repeat Section mode is released when the button is pressed again. Normal playing resumes and the icon disappears from the display.

► Repeat Options

Pressing the Repeat Section button, briefly in a pause, or long in a play mode, will play playlist files or all files in a folder repeatedly.

- FILE** : To play a file repeatedly
- FOLD** : To play all files in a folder repeatedly
- RND** : To repeat all of the tracks in a folder at random order
- F.ALL** : To play all of the tracks in a folder repeatedly
- OFF** : To play a single track and stop

► EQ Setting

Pressing the mode button, briefly in a pause, or long in a play mode, will bring up EQ options. (Normal, Classic, Jazz, Rock, Bass) Setting

► SRS WOW

In a play mode, pressing the mode button long will activate 3D sound effects for the current EQ setting.

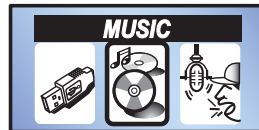
Note:

- In Stop mode, SRS WOW settings can't be reconfigured.
- For Ogg files, SRS WOW is not applicable for Q6 (192 kbps) and over.

■ MUSIC MODE

► To set to Music Mode

In a standby mode, hold down on the Mode button until the mode window appears. Slide the Jog button to the left and right and press down on the center jog to set to MUSIC.



(Music Modes Window)



(Initialized Music Mode)

■ VIOCE MODE

▷ To set to Voice Mode

In a standby mode, hold down on the Mode button until the mode window appears. Slide the Jog button to the left and right and press down on the center jog to set to Voice.



(Voice Modes Window)



(Initialized Voice Window)

▷ VOICE RECORDING

To start recording: Hold down on the Record button 3 seconds or longer.

Record Stop: Press the Record button briefly.

TP: _____

- The recorded file is saved in the [VOICE RECORD] folder.

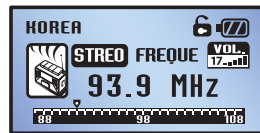
■ FM MODE

▷ To change to FM MODE

Hold down on the Mode button until the mode window appears. Slide the Jog button to the left and right and press down on the center jog to set to RADIO.



[Radio Modes Window]



[Initialized RADIO Window]

▷ To set to Frequency/Preset mode

In FM mode, pressing the Playback/Stop button changes to either the Frequency or Preset mode.

TP: _____

- Reception in the area will determine MONO/STEREO automatically.

▷ FREQUENCY

◆ To set to your favorite station (Frequency Scan)

- 1 After selecting Frequency Mode by pressing the Play/Stop button, press the Left/Right Jog briefly to navigate the band on a preset increment.
- 2 Hold down and release the Left/Right button, and the next available channel appears.

◆ To save a station frequency

Pressing briefly on the Center JOG button, the current station is saved to the end of the station list. When you want to save it in a different order, press Left/Right Jog to choose a station after which the current station is going to be saved, and press down briefly on the Center Jog button.

TP: _____

- When the channel store is complete, PRESET mode is automatically selected.

▷ PRESET Mode

◆ Auto Scan

Press the Play/Stop button to select Preset. When there is no pre-saved station, channels are searched and saved automatically. To search for another station, hold down on the JOG button to save the next available station.

TP: _____

- Be sure to have the earphone connected to the set.

◆ To move between the preset channels.

Press briefly on the Left/Right button to move between the preset channels.

▷ To record from a FM station

To record ; Hold down on the Record button 3 seconds or longer.

Record Stop ; Press the Record button briefly.



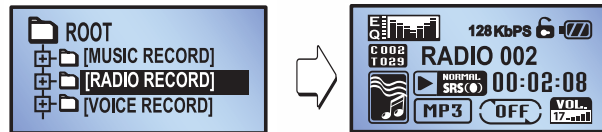
FM Radio Record

TP: _____

- Recorded files are saved in the [RADIO RECORD] folder and are available in VOICE Mode.

◆ To play a recorded file

Look in the Radio Record folder for available playback files.



Folder Directory

Playback of a recorded file

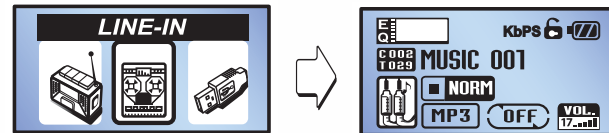
Look in the [Radio Record] folder for available playback files.

■ Line-In Mode

Connect the Line-In cable (included in the product package) between the unit and the external audio product, and recording from the outside source is saved in MP3 format.

▷ To set to Line-In Mode

In a standby mode, hold down on the Mode button until the mode window appears. Slide the Jog button to the left and right and press down on the center jog to set to Music Record.



(Line-In Modes Window)

(Initialized Line-In Window)

▷ Recording from an outside audio source

- 1 In a standby, connect the Line-In cable between the unit's Line-In jack and the Line-Out jack of the external audio product.
- 2 Start the playback of the external audio product and hold down on the Record button until recording starts.
- 3 Press the Record button again to stop recording.



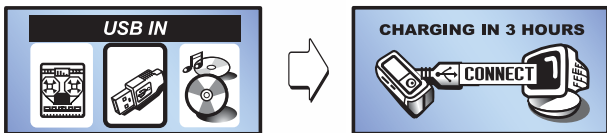
(Connecting the set to other audio product using Line-In recording)

TP:

- The recorded file is saved in the Line-In RECORD folder.

■ USB Mode

If you connect USB cable while power is on, you can charge battery and listen to music. And also if you choose USB Connection mode, it will change mode for USB connection with PC.



- 1 Built-in battery starts to be recharged and battery icon blinks by one second on the display when the USB adapter of the power-on player is connected into PC. Battery icon blinking automatically stops when recharging is completed.
- 2 The display shows 'USB connection' and recharging goes on at the same time when USB mode is selected at the above situation. (Rechargeable time requires approximately)

■ MENU configuration

Hold down on the Menu button until the menu window appears. Slide the Jog button to the left and right and press down on the center jog to make a choice of menus.



PLAYBACK



RECORD



FM RADIO



LCD DISPLAY



SOUND EFFCT



GENERAL SET



LYRIC/ID3



MEMORY

TP:

- Exiting a menu window will save automatically the setting of the value or the function you may have changed.
- To return to the previous mode, press the center jog button. To return to the menu window, press the playback button.

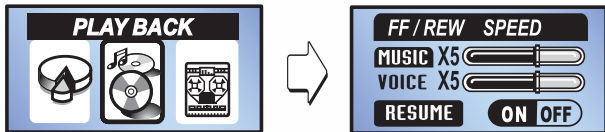
▷ Summary of Menu functions

Menu	Configuration		Description
PLAY BACK	FF/REW SPEED	MUSIC	To adjust the scan speed in Music mode
		VOICE	To adjust the scan speed in Voice mode
	RESUME ON/OFF		To resume from the point of stop
RECORD	MUSIC	AUTO SYNC	To separate and record into an individual file
		SYNC TIME	The time interval that separates between tracks
		BIT RATE	To set the audio quality of recorded files
	VOICE	VAD ON/OFF	The record detection level
		VAD TIME	The record detection time span
		BIT RATE	To set the audio quality of voice record
	FM RADIO	BIT RATE	To set the audio quality of FM record
FM RADIO	KOREA/EUROPE/U.S.A/JAPAN		FM Radio Reception Area Selection
LCD DISPLAY	BACKLIGHT COLOR		LCD Display Color
	CONAST		LCD Contrast
	B.L TIME		Time for the backlight to remain turned on

Menu	Configuration		Description
SOUND EFFECT	NORMAL/CLASSIC/POP/JAZZ/ROCK/BASS		Output bandwidth
	SRS WOW	WOW	3D Sound Effect
		TRUBAS	Enhanced Bass Sound Effect
		SPEAKER SIZE	Frequency Value suitable for a speaker size
GENERAL SET	SLEEP TIMER		To set sleep timer
	P.OFF TIME		Power Save
	SLEEP TIME		To set the time for sleep timer
LYRIC / ID3	LYRIC OFF		Not to display lyrics
	LYRIC		To display lyrics
	ID3 TAG		To display file information
MEMORY	TOTAL		Total memory installed
	SYSTEM		Memory used by the system
	USER		Memory usage
	FREE		Total remaining memory

▷ PLAYBACK

In Menu mode, slide the jog button to the left or right, and press the center jog to choose PLAYBACK.



◆ FF / REW SPEED

To set the playback scan speed in Music or Voice mode. (x1~x5 adjustable speed)

- 1 Use the up/down jog button to make a choice of either Music or Voice mode.
- 2 Move the left/right jog button to set to your choice of speed on the speed bar in either Music or Voice. (x1~x5 adjustable speed)

◆ RESUME

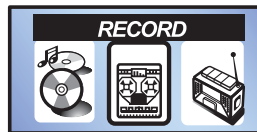
To play a track from the point of Stop.

- 1 Use the up/down jog button to select RESUME.
- 2 Use the left/right jog button to set to either ON or OFF.

▷ Record

To make settings for the Record operation.

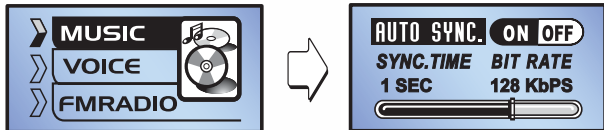
In Menu mode, slide the jog button to the left or right, and press the center jog to choose Record.



◆ MUSIC

To make settings for the Music Record operation.

In Menu mode, slide the jog button to the left or right, and press the center jog to choose Record. Use the up/down jog button to select MUSIC, and press the center jog to bring up the Music settings.



► AUTO SYNC

To record all the tracks automatically separating each track into individual files during Line-In recording.

- 1 In Music options, use the up/down jog button to choose AUTO SYNC.
- 2 Use the left/right jog button to set to either ON or OFF. (64/128/192/256/320kbps)

► SYNC TIME

To set the interval time that separates between the playing tracks

- 1 In Music options, use the up/down jog button to choose SYNC TIME.
- 2 Use the left/right jog button to move on the SYNC TIME slide bar. (1sec ~ 8sec)

► BIT RATE

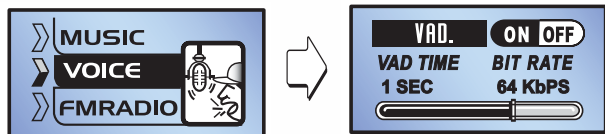
To set the compression rate (a.k.a transmitting speed.)

- 1 In Music options, use the up/down jog button to choose BIT RATE.
- 2 Use the left/right jog button to move on the BIT RATE slide bar for an appropriate rate. (64/128/192/256/320kbps)

◆ VOICE

Voice Record Options

Use the up/down jog button to select MUSIC, and press the center jog to bring up the Voice settings.



► VAD (Voice Activity Detection)

VAD function features recording when it detects a sound source and the recording pauses when it detects no sound activity.

- 1 In Voice options, use the up/down jog button to choose VAD.
- 2 Use the left/right jog button to set to either ON or OFF.

► VAD TIME

For VAD ON, VAD TIME determines when recording should start. For example, when set to 5 seconds, VOICE RECORDING wouldn't start and would remain record-ready until a sound source lasts longer than 5 seconds.

- 1 In Music options, use the up/down jog button to choose VAD TIME.
- 2 Use the left/right jog button to move on the VAD TIME slide bar for an appropriate time interval.(1sec ~ 8sec)

► BIT RATE

To determine the audio quality of recorded files.

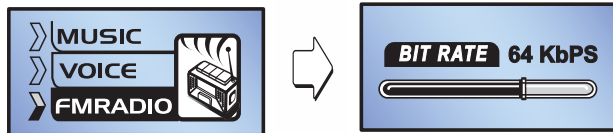
- 1 In Voice options, use the up/down jog button to choose BIT RATE.
- 2 Use the left/right jog button to move on the BIT RATE slide bar for an appropriate rate.
(64/128/192/256/320kbps)

◆ FM RADIO

To make settings for recording FM RADIO. Use the up/down jog button to select RADIO.

In Menu mode, slide the jog button to the left or right, and press the center jog to choose Record.

Use the up/down jog button to select FM RADIO, and press the center jog to bring up the Music settings.



▶ BIT RATE

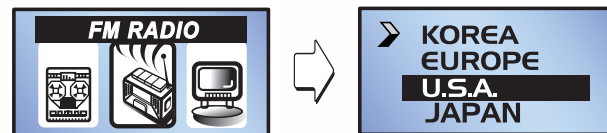
To determine the audio quality of recorded files.

- 1 In FM Radio options, use the up/down jog button to choose BIT RATE.
- 2 Use the left/right jog button to move on the BIT RATE slide bar for an appropriate rate.
(64/128/192/256/320kbps)

▶ FM RADIO (Area setting)

To determine the area of FM radio bandwidth.

In Menu mode, slide the jog button to the left or right, and press the center jog to choose FM RADIO.



Use the up/down jog button to select one of the areas.

- ▶ **KOREA** : Korea-87.5MHz~108MHz, STEP: 100kHz
- ▶ **EUROPE**: (Asia, and Africa)-87.5MHz~108MHz,
STEP: 50kHz
- ▶ **U S A**: (Canada200 ,USA, Latin America)-
87.5MHz~108MHz, STEP: 100kHz
- ▶ **JAPAN** : Japan 76MHz~108MHz, STEP: 100kHz

▷ LCD DISPLAY

To configure the LCD settings to your preference.

◆ CONTRAST

To set the contrast of the LCD window.

- 1 In LCD Display options, slide the jog button to the left or right, and press the center jog to choose CONTRAST.
- 2 Use the left/right jog button to move on the CONTRAST slide bar for an appropriate setting. (10 LEVEL)

◆ BACK LIGHT TIME

To set the time for backlight to remain turned on.

- 1 In Menu mode, slide the jog button to the left or right, and press the center jog to choose LCD DISPLAY.
Use the up/down jog button to select B.L TIME.
- 2 Use the left/right jog button to move on the B.L TIME slide bar for an appropriate time interval. (1SEC~8SEC & OFF & ALWAYS)

TP:

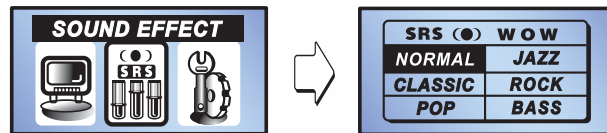
- The duration the backlight remained turned on will determine how much to save on the battery regardless of buttons being pressed.

▷ SOUND EFFECT

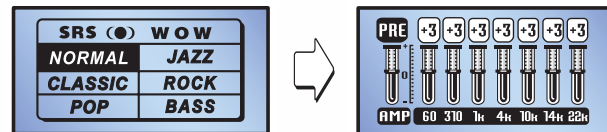
Output of a frequency bandwidth can be adjusted for the appropriate tone settings.

User EQ includes 5 frequency bands, and each band can be adjusted between +10dB ~ -10dB.

Use the left/right jog button to select SOUND EFFECT, and press the center jog button to bring up the Sound Effect options.



◆ EQ (Normal/ Classic/ Pop/ JAZZ/ Rock/ BASS)



- 1 In Menu mode, slide the jog button to the left or right, and press the center jog to choose SOUND EFFECT. Use the up/down jog button and press the center jog button to select one of the EQ options.
- 2 Use the up/down jog button to move on the frequency bandwidth slide bar to your preference.

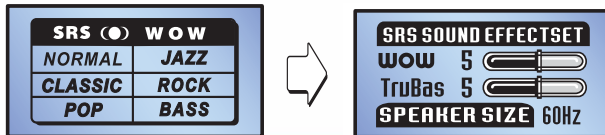
TIP:

- If you prefer to adjust one of the bandwidths (comparatively louder or quieter to other bandwidths), use the left/right jog to move on the bandwidth slide bar for an appropriate setting.
- The same method goes to set to Normal/ Classic/ Pop/ JAZZ/ Rock/ Jazz/ BASS.

◆ SRS WOW

Pressing the mode button long will activate 3D sound effects for the current EQ setting.

In Menu mode, slide the jog button to the left or right, and press the center jog to choose SOUND EFFECT.



► WOW

To adjust the extent of the 3D SOUND effect. To produce SRS and Tru Bas effects at the same time for outstanding audio fidelity.

- 1 In SRS WOW options, use the up/down jog button to choose WOW.
- 2 Use the left/right jog button to move on the WOW slide bar for an appropriate setting. (1 ~ 9 level)

► TRU BAS

Tru Bas To enhance the bass (the low-frequency sound) for grand sound effects.

- 1 In SRS WOW options, use the up/down jog button to choose Tru Bas.
- 2 Use the left/right jog button to move on the TruBas slide bar for an appropriate setting. (1 ~ 9 level)

► SPEAKER SIZE

To adjust the sound effects for the size of the speakers used.

- 1 In SRS WOW options, use the up/down jog button to choose SPEAKER SIZE.
- 2 Use the left/right jog button to choose the right size of the speaker for an appropriate output setting.

(H.P./40Hz/60Hz/100Hz/150Hz/200Hz/250Hz/300Hz/400Hz)

Value for the size of a speaker	
40	Small Earphone
60	Regular Earphone
100	Small Speaker
Over 100	Other speakers

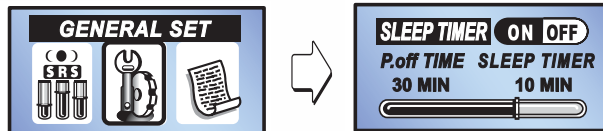
TP:

- SRS is the trademark of SRS Labs. Inc.
- WOW technology is licensed by SRS Labs. Inc.

► GENERAL Configuration

Other convenient functions

In Menu mode, slide the jog button to the left or right, and press the center jog to choose GENERAL SET.



◆ SLEEP TIMER

Sleep will turn off the power when the user-set period elapses. Use this when you are going to listen to radio or music for an extended period of time.

- 1 In Menu mode, slide the jog button to the left or right, and press the center jog to choose GENERAL SET. Use the up/down jog button to select SLEEP TIMER.
- 2 Use the left/right jog button to set to either ON or OFF.

◆ P.off TIME (Power Off Time)

P. off TIME is a power save function which will let the unit to go off power when no activity is detected for a certain period of time.

- 1 In Menu mode, slide the jog button to the left or right, and press the center jog to choose GENERAL SET. Use the up/down jog button to select P. off TIME.
- 2 Use the left/right jog button to move on the P. off TIME slide bar for an appropriate time interval of the automatic power save. (1 MIN ~ 10 MIN)

◆ SLEEP TIME

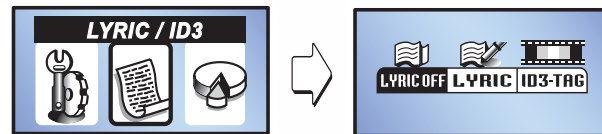
To set the SLEEP TIME to your preference.

- 1 In Menu mode, slide the jog button to the left or right, and press the center jog to choose GENERAL SET. Use the up/down jog button to select SLEEP TIME.
- 2 Use the left/right jog button to move on the SLEEP TIME slide bar for an appropriate time interval of the automatic power-off. (1 MIN ~ 10 MIN)

▷ LYRIC / ID3

Setting this feature will determine the display method of file information and lyrics.

In Menu mode, slide the jog button to the left or right, and press the center jog to choose ID 3 TAG.



◆ LYRIC OFF

Not to display the lyrics.

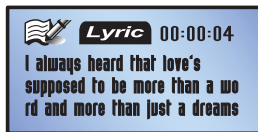
- 1 In Menu mode, slide the jog button to the left or right, and press the center jog to choose ID 3 TAG. Use the left/right jog button to choose LYRIC OFF.

◆ LYRIC

To display the lyrics.



Lyric Setting



Playback with Lyric on

1 Use the left/right jog button to choose LYRIC.

◆ ID3-TAG

ID3-TAG displays title, artist and album information of the playing file.



ID3-TAG Setting



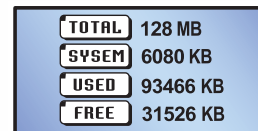
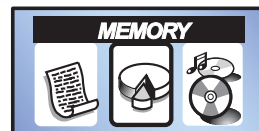
Playback with the option on

1 Use the left/right jog button to choose ID3-TAG.

▷ MEMORY

To display the total size/usage/remaining size of the current memory.

In Menu mode, slide the jog button to the left or right, and press the center jog to choose MEMORY.



- ▶ **TOTAL** : To display the total size of the memory
- ▶ **SYSTEM** : To display the size of the SYSTEM file memory for the player
- ▶ **USER** : To display the usage of the memory
- ▶ **FREE** : To display the remaining size of memory

■ FIRMWARE Upgrade

FIRMWARE Upgrade should be executed when there is a new release of firmware or when the player malfunctions. Please check with ***** for a new release of firmware.

- ▶ Link the product to a PC using the provided USB cable.
- ▶ When connection is established, copy and paste the firmware upgrade files into [EMX-900 SYSTEM].
- ▶ When the operation is complete, use “Unplug/eject” to remove the product.
- ▶ Begin the firmware upgrade by turning on the power of the set.

TP: _____

- Please visit our website for a new release of Firmware Upgrade.
- Removing the battery from the product during the firmware upgrade may cause fatal damage to the set.
- When Firmware Upgrade is not initiating after the above operation, check if the battery is properly charged. Replace the battery with a new one and start the upgrade again.

Product Specification

Model	EMX-900
Memory	128MB/256MB/512MB/1024MB
Supported file Format	MPEG 1/2/2.5 Layer 3(8~ 320kbps, VBR) WMA (5~192kbps) ASF, OGG (Q10)
Battery	Li-polymer Battery (3.7V) with in
USB	USB2.0
Total Play Time	About 15 hrs continuous play time
LCD	OLED (128 x 64) / 2 Color
Size	75 x 32 x 16.4mm
Weight	40g (W/ I Battery)
S/N Ratio	90dB
Earphone Output	13mW + 13mW (16Ω)
FM Bandwidth	87~108MHz
Recording	Supporting VOICE / FM /Line-In Recording
Language	Multi language (Standard Unicode 2.0)
OS	Windows 98SE / ME / 2000 / XP / MAC*

TP: _____

- Installation software for Mac users is not provided.

Troubleshoot Checklist

● In case of no sound

Check if the volume is set to '0.'

Check if the connection of the earphone has failed.

● Buttons don't work

Check if the Hold switch is on.

● "There is no file" message appears when pressing Playback.

Choose the "Total" mode of [Playing Methods]

For more details, refer to the Playing Methods of this guide.

● In case of no FM reception

For a fringe area where reception is poor, some radio signals are hard to pick up.

Check if the connection of the earphone has failed. (The earphone doubles as the antenna for the product.)

● The system seems sluggish

Boot speed will a lot slower when there are too many files in the unit.

Please refer to the page 26, Preparation.

FCC RF INTERFERENCE STATEMENT

NOTE :

This equipment has been tested and found to comply with the limits for a Class B digital device, pursuant to Part 15 of the FCC Rules. These limits are designed to provide reasonable protection against harmful interference in a residential installation.

This equipment generates, uses and can radiate radio frequency energy and, if not installed and used in accordance with the instructions, may cause harmful interference to radio communications. However, there is no guarantee that interference will not occur in a particular installation.

If this equipment does cause harmful interference to radio or television reception which can be determined by turning the equipment off and on, the user is encouraged to try to correct the interference by one or more of the following measures.

- Reorient or relocate the receiving antenna.
- Increase the separation between the equipment and receiver.
- Connect the equipment into an outlet on a circuit different from that to which the receiver is connected.
- Consult the dealer or an experienced radio, TV technical for help.
- Only shielded interface cable should be used.

Finally, any changes or modifications to the equipment by the user not expressly approved by the grantee or manufacturer could void the users authority to operate such equipment

Troubleshoot Checklist

- **In case of no sound**

Check if the volume is set to '0.'

Check if the connection of the earphone has failed.

- **Buttons don't work**

Check if the Hold switch is on.

- **"There is no file" message appears when pressing Playback.**

Choose the "Total" mode of [Playing Methods]

For more details, refer to the Playing Methods of this guide.

- **In case of no FM reception**

For a fringe area where reception is poor, some radio signals are hard to pick up.

Check if the connection of the earphone has failed. (The earphone doubles as the antenna for the product.)

- **The system seems sluggish**

Boot speed will a lot slower when there are too many files in the unit.

Please refer to the page 26, Preparation.

FCC RF INTERFERENCE STATEMENT

NOTE :

This equipment has been tested and found to comply with the limits for a Class B digital device, pursuant to Part 15 of the FCC Rules. These limits are designed to provide reasonable protection against harmful interference in a residential installation.

This equipment generates, uses and can radiate radio frequency energy and, if not installed and used in accordance with the instructions, may cause harmful interference to radio communications. However, there is no guarantee that interference will not occur in a particular installation.

If this equipment does cause harmful interference to radio or television reception which can be determined by turning the equipment off and on, the user is encouraged to try to correct the interference by one or more of the following measures.

- Reorient or relocate the receiving antenna.
- Increase the separation between the equipment and receiver.
- Connect the equipment into an outlet on a circuit different from that to which the receiver is connected.
- Consult the dealer or an experienced radio, TV technical for help.
- Only shielded interface cable should be used.

Warranty Certificate

Warranty is provided as follows.

1. This product is manufactured through strict quality control and inspection process.
2. Free repair service will be provided at our shops or service center at the company's main office during the warranty period if a failure occurs under the normal conditions of the customer's use.
3. Repair service will be provided with a service charge if the need for repair is attributed to the customer even during the warranty period.
4. It is sufficient to present this warranty certificate when requesting a repair service.
5. This warranty certificate will not be reissued. Please keep it in a safe place.
6. This warranty certificate is effective domestically.

Product Name		Model Name	
Serial No.			
Customer	Name	Telephone No.	
	Address		
Shop (Seller)	Title	Telephone No.	
	Address		Name
Purchase Date		Warranty Period	One year
Manufacturer	Company Name	Telephone No.	
ENOX	Address		

Please fill in the above blanks of Customer, Shop (Seller), and Purchase Date when selling the product.

FCC B Class Product (household appliances)

This product is approved for domestic use. There's no restriction of area to use the product.

MEMO